

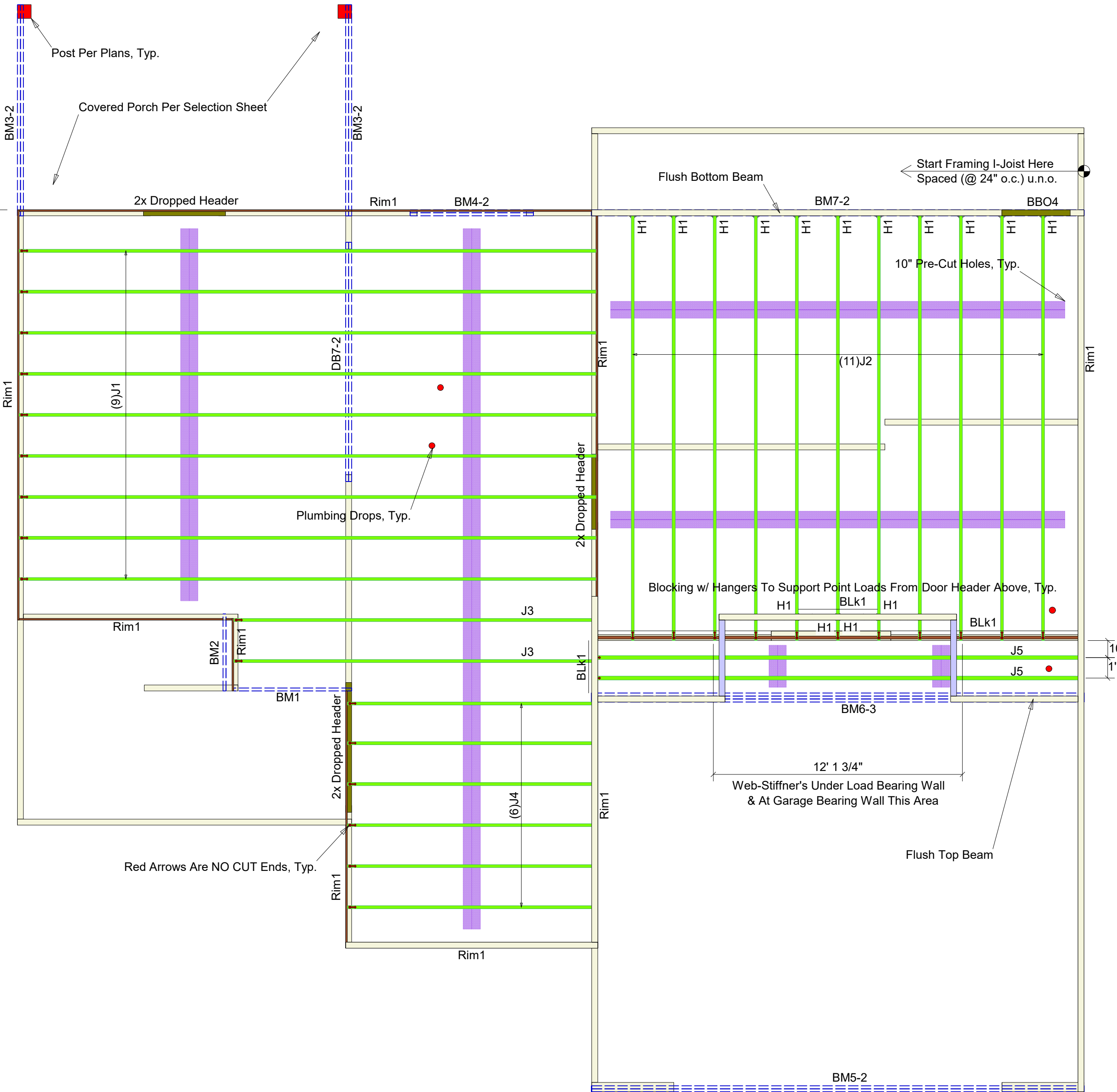
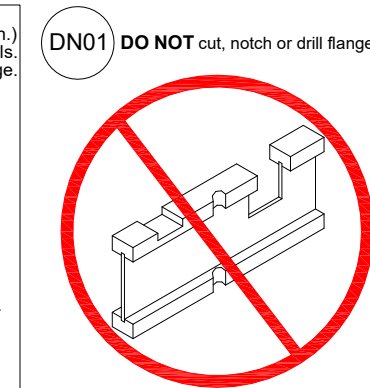
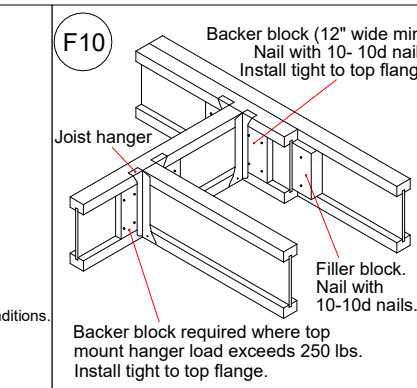
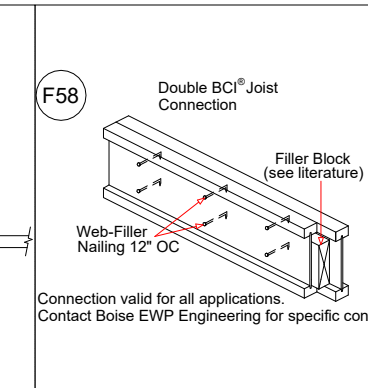
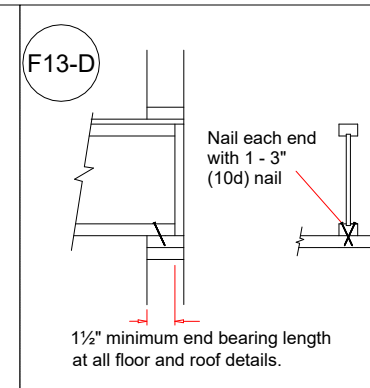
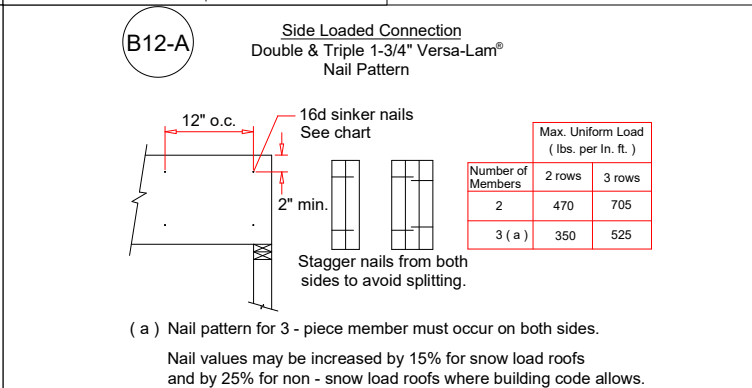
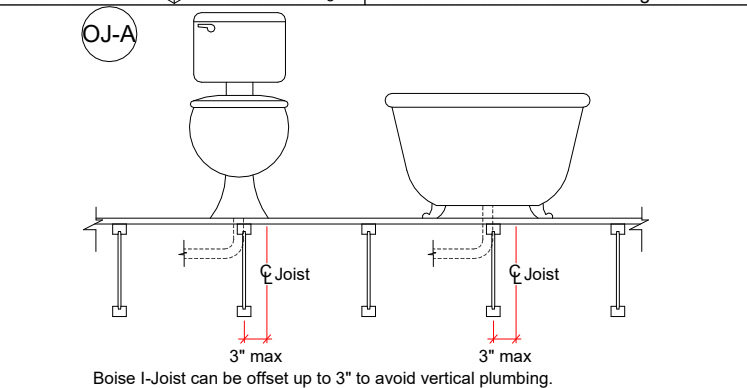
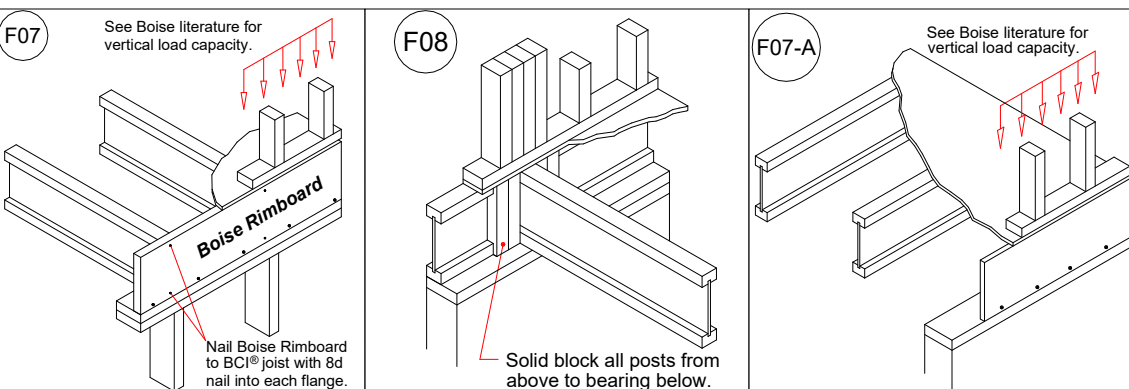
General Notes:

- 1.) "READ" Boise Installation Guide before installation of products.
- 2.) All, I-Joist, LVL beams, and Rim Board must be field cut to length.
- 3.) Contractor must verify and approve the material list.
- 4.) I-Joist may be moved 3" out of its own o.c. spacing, up to 19.2" o.c., to allow for plumbing drops.
- 5.) This layout, is a placement plan and, was designed in accordance with the original design of the structure (unless otherwise noted). See original plans for additional structural notes.
- 6.) Ceramic tile floors should be supported per APA standards. Additional joists may be required.
- 7.) HVAC & PLUMBER, "Review" Boise Installation Guide (Joist Hole Location & Sizing) Chart "BEFORE" cutting the I-joist product.
- 8.) "Blocking", are Random Length I-joist, Labeled as such.

I-Joist Plot ID # & Length on Top of Flange

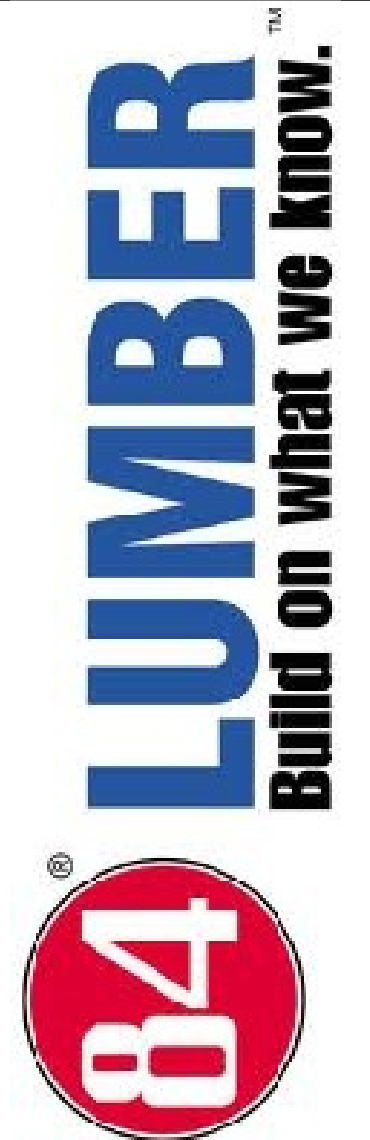
Connector Summary				
PlotID	Qty	Manuf	Product	Flange
H1	15	Simpson	IUS 1.81/14	None

Products				
PlotID	Length	Product	Plies	Net Qty
J1	28' 4"	14" BCI® 4500s-1.8	1	9
J2	21' 0"	14" BCI® 4500s-1.8	1	11
J3	18' 0"	14" BCI® 4500s-1.8	1	2
J4	12' 4"	14" BCI® 4500s-1.8	1	6
J5	24' 4"	14" BCI® 6000s-1.8	1	2
BM1	6' 0"	14" BCI® 4500s-1.8	1	1
BM2	4' 0"	14" BCI® 4500s-1.8	1	1
BM3-2	12' 0"	1-3/4" x 9-1/4" VERSA-LAM® 2.0 3100 SP	2	4
BM4-2	6' 0"	1-3/4" x 9-1/4" VERSA-LAM® 2.0 3100 SP	2	2
BM5-2	24' 0"	1-3/4" x 11-7/8" VERSA-LAM® 2.0 3100 SP	2	2
BM6-3	24' 0"	1-3/4" x 14" VERSA-LAM® 2.0 3100 SP	3	3
DB7-2	12' 0"	1-3/4" x 14" VERSA-LAM® 2.0 3100 SP	2	2
BM7-2	24' 0"	1-3/4" x 20" VERSA-LAM® 2.0 3100 SP	2	2
Rim1	12' 0"	1" x 14" BC RIM BOARD OSB	1	12
BLK1	28' 0"	14" BCI® 4500s-1.8	1	1



Note: Refer to current Boise Cascade Installation Guide for details not shown.

2ND FLOOR LAYOUT



200 Emmett Drive, Dunn, N.C. 28334 (910) 892 + 8400

Caviness Land Development
CL - 3141
GOR/W/CP

Scale: NTS
Date: 3-29-17
By: J. Baker
DWG: 11562
Sheet: 1 of 1