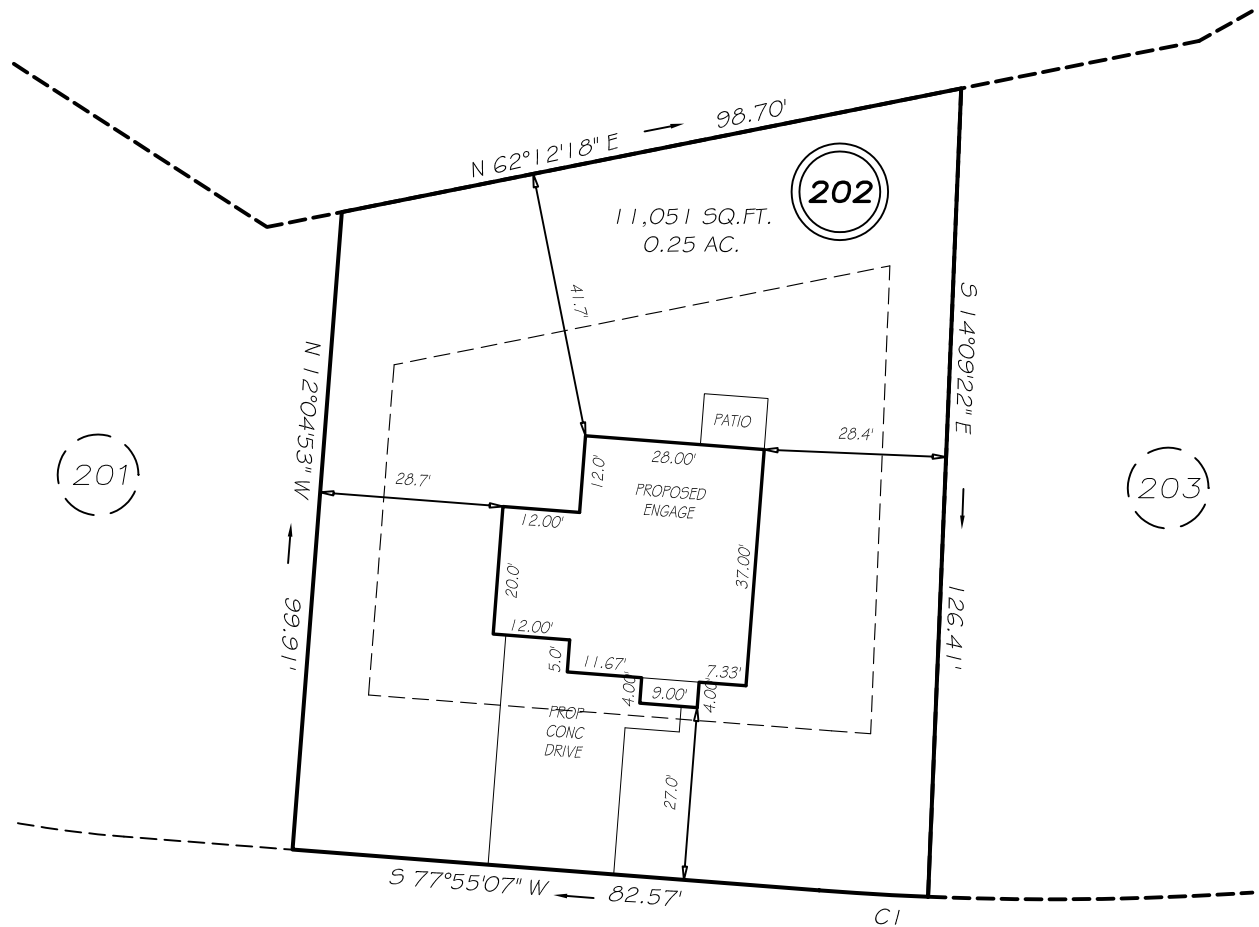


I, MICHAEL P. GRIFFIN, certify that under my direction and supervision this map was drawn from an actual field survey; that the error of closure of the survey as calculated by coordinates is 1: 10,000+; that the area shown hereon was calculated by coordinates.

Witness my hand and seal this day of MONTH 2018.

N
 MAP 2012 PGS 379-380
 HARNETT CO. REGISTRY

HIGHGROVE AT ANDERSON CREEK
 PHASE 5
 PB 2010 PG 692



NEW CASTLE LANE
 60' RW

SETBACKS

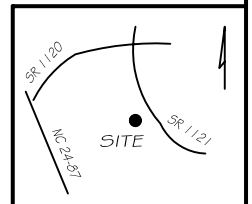
FRONT	25'
REAR	25'
SIDE	10'
CORNER SIDE	20'

CI R=470.00' L=17.02' N76°52'52"E 17.02'

LEGEND

PRELIMINARY
 NOT FOR RECORDATION,
 SALES OR CONVEYANCE

EIP	EXISTING IRON PIPE	FES	FLARED END SECTION
IPS	IRON PIPE SET	WM	WATER METER
R/W	RIGHT OF WAY	CO	CLEAN OUT
N/F	NOW OR FORMERLY	FH	FIRE HYDRANT
EIS	EXISTING IRON STAKE	CB	CATCH BASIN



GRIFFIN LAND SURVEYING, INC.

P. O. BOX 148
 FUQUAY-VARINA, NC 27526
 (919) - 567 - 1963

PLOT PLAN

FOR

H & H HOMES

HIGHGROVE AT ANDERSON CREEK

LOT 202

NEW CASTLE LANE

NORTH CAROLINA

HARNETT COUNTY ANDERSON CREEK TOWNSHIP

DRAWN BY NMF

DATE 3/8/18

CHECKED BY MPG

SCALE 1" = 30'