

Course	Bearing	Distance
L1	N 01°56'50" W	62.25'
L2	N 01°03'36" W	89.81'
L3	N 01°01'58" W	101.63'
L4	N 00°13'53" W	66.82'

- LEGEND**
- NTS NOT TO SCALE
 - EIP EXISTING IRON PIPE
 - PP POWER POLE
 - W/M WATER METER
 - TB TELEPHONE BOX
 - IPS IRON PIPE SET
 - CP&L TRANSFORMER
 - CATV CABLE TV BOX
 - L POLE LIGHT POLE
 - OHPL OVERHEAD POWER LINE
 - F.E.S. FLARED END SECTION (PIPE)
 - RCP REINFORCED CONC. PIPE
 - B.O.C. BACK OF CURB
 - F.H. FIRE HYDRANT
 - C/O SEWER CLEAN OUT
 - EIS EXISTING IRON STAKE
 - M.H. MANHOLE
 - ECM EXISTING CONCRETE MONUMENT
 - P.K. PARKER KALON NAIL

ROBERT R. TRUELOVE
D.B.1660, PG.433
M.B.2002, PG.771

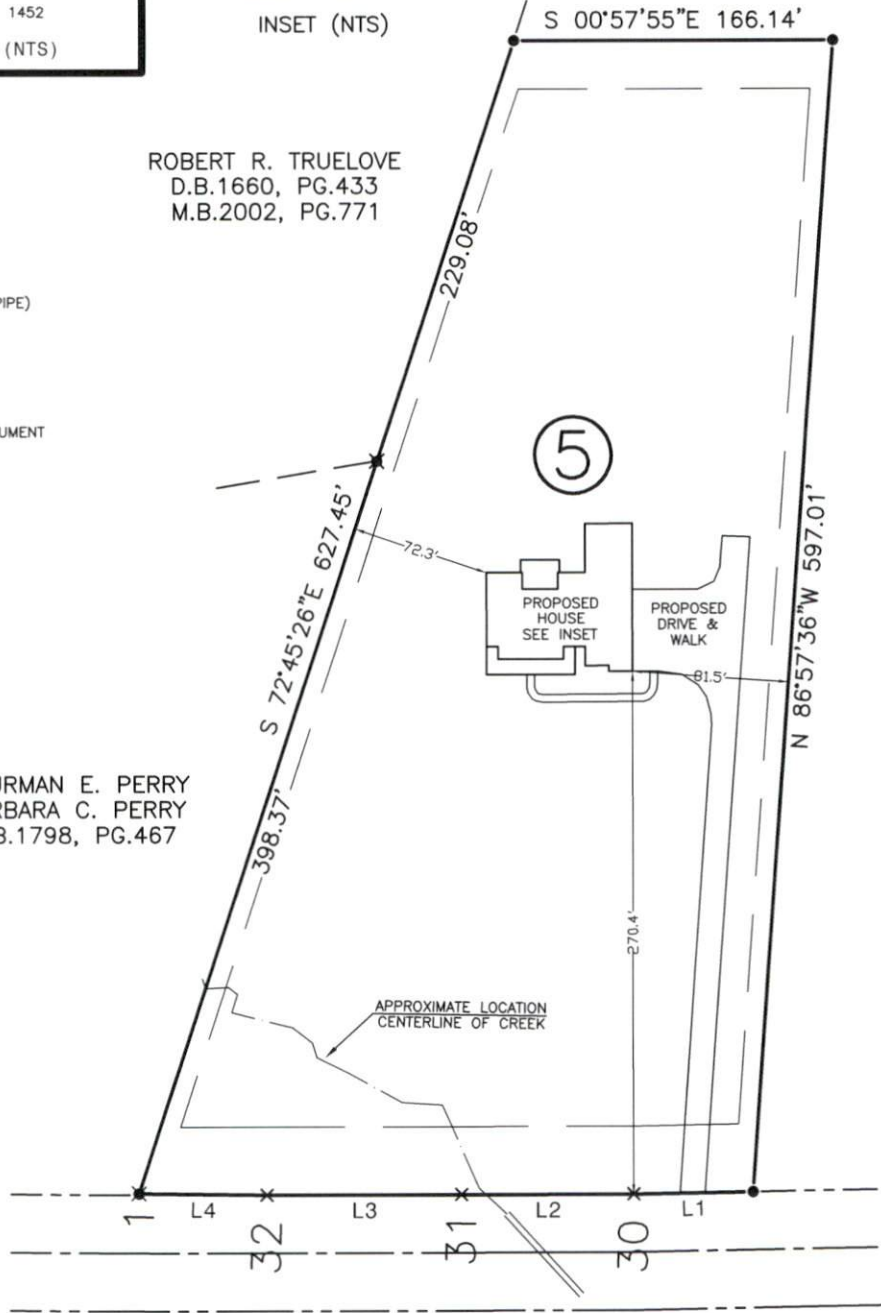
THURMAN E. PERRY
BARBARA C. PERRY
D.B.1798, PG.467

①

AARON WILKINS
TAMARA WILKINS
D.B.3601, PG.846
M.B.2018, PG.309

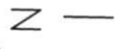
⑤

*Revised
Site
Plan
11/28/18*



WADE STEPHENSON ROAD
(60' PUBLIC R/W - S.R.1407)

PLAT NORTH
(REF: M.B.2018, PG.309)



NOTE: SHOWN IS LOT 5 OF
AARON & TAMARA WILKINS S/D
REF: M.B.2018, PG.309

AREA = 3.333 ACRES
WADE STEPHENSON ROAD

