

Revision

D'Alesio  
Lot #3 (~3.55 acres) Chesterfield Estates  
Mabry Road, Harnett County

Mother in-law suite/Garage

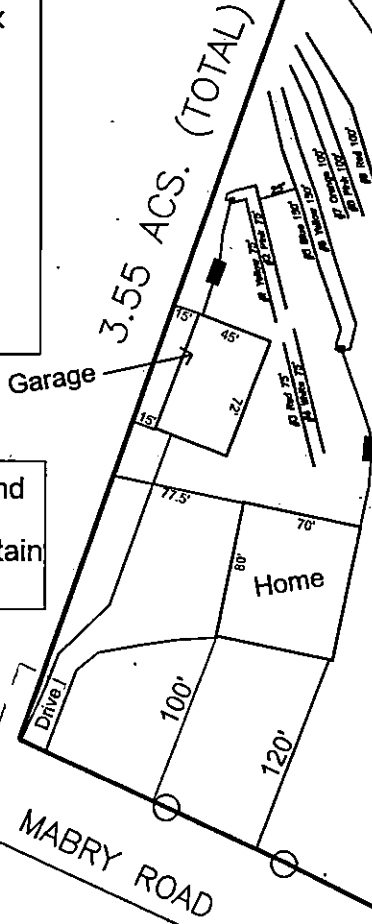
System: \*Gravity to D-Box  
Lines: 1-2, (150')  
0.4 LTAR  
24" Trench Bottom  
Accepted Status System  
Repair: Pump to D-Box  
Lines: 3-4, (150')  
0.4 LTAR  
24" Trench Bottom

4-Bedroom Home

System: \*Gravity to D-Box  
Lines: 1-2, (300')  
0.4 LTAR  
24" Trench Bottom  
Accepted Status System  
Repair: Gravity to D-Box  
Lines: 3-5, (300')  
0.4 LTAR  
24" Trench Bottom

\*Separate systems for home and Barn/Mother in-law suite.  
Individual systems must maintain at least 20 feet of separation.

*SITE PLAN APPROVAL  
DISTRICT RA-30 USE SED  
#BEDROOMS 4 beds / 4.5 baths  
Chesterfield 01/03/19  
ADMINISTRATOR*



POND

POND

MABRY ROAD

N.C. 55 W  
60' PUBLIC R/W

GRAPHIC SCALE  
1" = 100'



Adams  
Soil Consulting  
919-414-6761  
Project #665

**D'Alesio**  
**Lot #3 - Chesterfield Estates**  
 4-Bedroom Home (480 gal./day)

<u>LINE #</u>	<u>COLOR</u>	<u>BS</u>	<u>HI</u>	<u>FS</u>	<u>ELEVATION</u>	<u>LINE LENGTH</u>	<u>Design Length</u>
TBM		1.0		100.0		<u>in field</u>	<u>installation</u>
INST. 1			101.0				
5	Blue			6.2	94.8	200	150
6	Yellow			6.9	94.1	200	150
7	Orange			7.5	93.5	175	100
8	Pink			8.2	92.8	140	100
9	Red			9	92	115	100

	<u>System</u>	<u>Repair</u>
	Lines 5-6	Lines 7-9
<b>System Type</b>	Accepted Status System EZ-FLOW	Accepted Status System EZ-FLOW
Suggested Soil LTAR	0.40	0.40
<b>Total Line Length</b>	300	300
<b>Square Footage</b>	900	900
<b>Proposed Trench Bottom</b>	24"	24"
<b>Distribution Method</b>	Gravity to D-Box	Gravity to D-Box

**D'Alesio**

**Lot #3 - Chesterfield Estates**

2-Bedroom Mother in-law suite (240 gal./day)

<u>LINE #</u>	<u>COLOR</u>	<u>BS</u>	<u>HI</u>	<u>FS</u>	<u>ELEVATION</u>	<u>LINE LENGTH</u>	<u>Design Length</u>
TBM		1.0		100.0		<u>in field</u>	<u>installation</u>
INST. 1			101.0				
1	Yellow			4	97	75	75
2	Pink			4.5	96.5	75	75
3	Red			4	97	75	75
4	Pink			4.5	96.5	75	75

	<u>System</u> Lines 1-2	<u>Repair</u> Lines 3-4
<b>System Type</b>	Accepted Status System EZ-FLOW	Accepted Status System EZ-FLOW
<b>Suggested Soil LTAR</b>	0.40	0.40
<b>Total Line Length</b>	150	150
<b>Square Footage</b>	450	450
<b>Proposed Trench Bottom</b>	24"	24"
<b>Distribution Method</b>	Gravity to D-Box	Gravity to D-Box