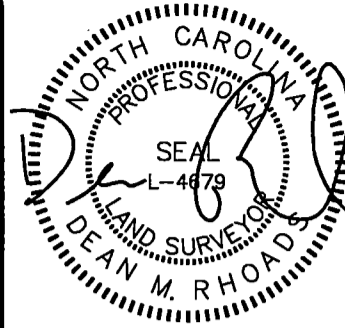
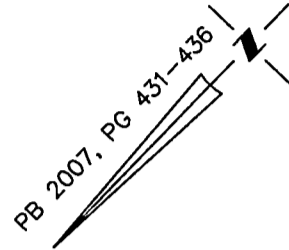


VICINITY MAP
Not To Scale



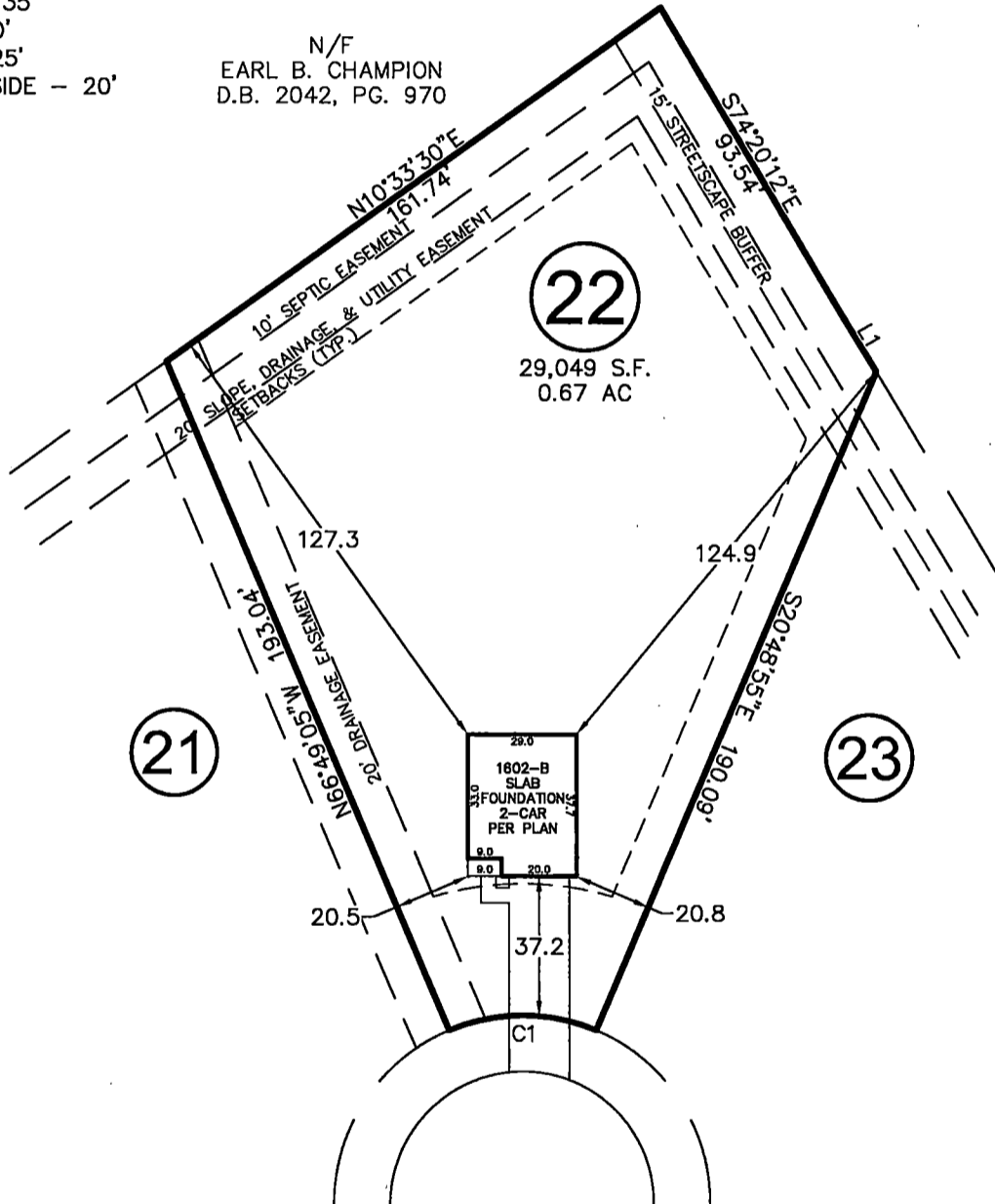
IMPERVIOUS SURFACE AREA	
DESCRIPTION	AREA
HOUSE w/ PORCH	1,093 S.F.
DECK/PATIO/HVAC	18 S.F.
DRIVEWAY & WALKS	641 S.F.
TOTAL (PROPOSED)=	1,752 S.F.
LOT AREA =	29,049 S.F.
% IMPERVIOUS AREA	6.0%
FLATWORK WITH R/W =	243 S.F.



SETBACKS:

- FRONT - 35'
- SIDE - 10'
- REAR - 25'
- CORNER SIDE - 20'

N/F
EARL B. CHAMPION
D.B. 2042, PG. 970



REVISIONS	
REV. #	DATE
REV. 1	5/10/18
	CHANGED HOUSE FROM 1402-B TO 1602-B

MAPLE LEAF COURT

50' PUBLIC R/W

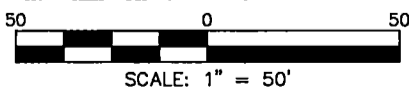
LINE	BEARING	DISTANCE
L1	S74°48'21"E	19.06'

CURVE	RADIUS	ARC LENGTH	CH LENGTH	CH BEARING
C1	50.00'	40.15'	39.08'	N46°10'30"E

THIS PROPERTY MAY BE SUBJECT TO ANY AND ALL APPLICABLE DEED RESTRICTIONS, EASEMENTS, RIGHT-OF-WAY, UTILITIES AND RESTRICTIVE COVENANTS WHICH MAY BE OF RECORD OR IMPLIED

THIS DRAWING DOES NOT REFLECT AS-BUILT INFORMATION

PRELIMINARY PLAT
NOT FOR RECORDATION, CONVEYANCES, OR SALES.



RESIDENTIAL LAND SERVICES, PLLC.

1500 Piney Plains Road, Suite 102
Cary, North Carolina 27518
Phone (919) 977-1554
Firm License # P-0873

HOUSE LOCATION PLOT PLAN

FOR
#205 MAPLE LEAF COURT
LOT 22, SUMMERHILL SUBDIVISION

Upper Little River Township, Harnett County, North Carolina

PROPERTY OF: WADE JOURNEY HOMES

PLAT BOOK 2007 PAGE 431-436 DEED REFERENCE

DRAWN BY: JWW

DATE: APRIL 19, 2018