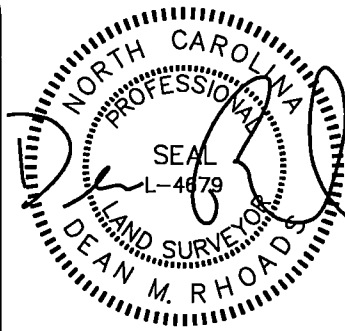


VICINITY MAP
Not To Scale



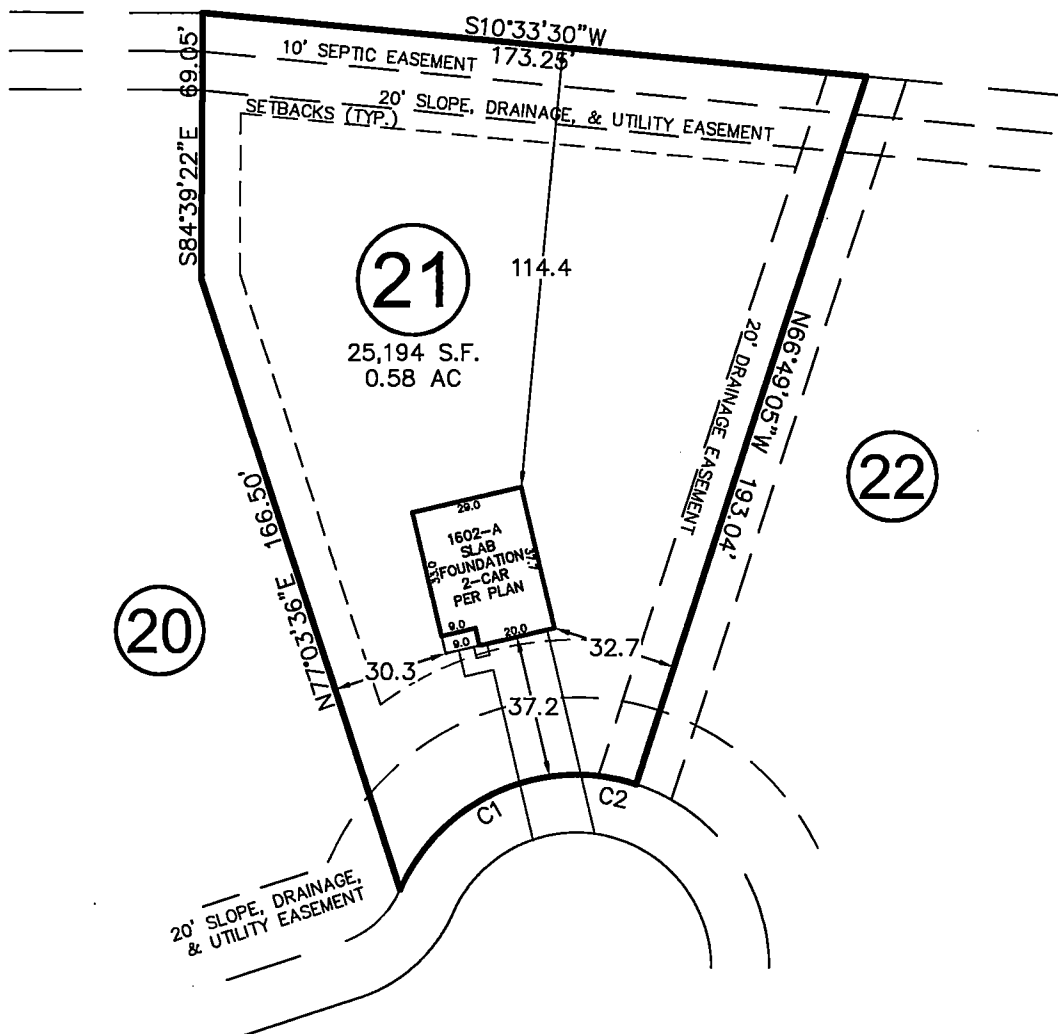
IMPERVIOUS SURFACE AREA	
DESCRIPTION	AREA
HOUSE w/ PORCH	1,093 S.F.
DECK/PATIO/HVAC	18 S.F.
DRIVEWAY & WALKS	641 S.F.
TOTAL (PROPOSED)=	1,752 S.F.
LOT AREA =	25,194 S.F.
% IMPERVIOUS AREA	7.0%
FLATWORK WITH R/W = 243 S.F.	

PB 2007, PG 431-436

SETBACKS:

- FRONT - 35'
- SIDE - 10'
- REAR - 25'
- CORNER SIDE - 20'

N/F
EARL B. CHAMPION
D.B. 2042, PG. 970



REVISIONS		
REV. #	DATE	COMMENT
REV. 1	5/10/18	CHANGED HOUSE FROM 1402-A TO 1602-A

MAPLE LEAF COURT

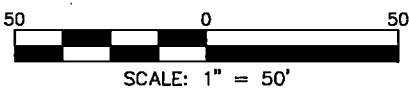
50' PUBLIC R/W

CURVE	RADIUS	ARC LENGTH	CH LENGTH	CH BEARING
C1	50.00'	63.51'	59.32'	N24°44'33"W
C2	50.00'	10.07'	10.05'	N17°24'48"E

THIS PROPERTY MAY BE SUBJECT TO ANY AND ALL APPLICABLE DEED RESTRICTIONS, EASEMENTS, RIGHT-OF-WAY, UTILITIES AND RESTRICTIVE COVENANTS WHICH MAY BE OF RECORD OR IMPLIED

THIS DRAWING DOES NOT REFLECT AS-BUILT INFORMATION

PRELIMINARY PLAT
NOT FOR RECORDATION, CONVEYANCES, OR SALES.



RESIDENTIAL LAND SERVICES, PLLC.

1500 Piney Plains Road, Suite 102
Cary, North Carolina 27518
Phone (919) 977-1554
Firm License # P-0873

HOUSE LOCATION PLOT PLAN

FOR
#195 MAPLE LEAF COURT
LOT 21, SUMMERHILL SUBDIVISION
Upper Little River Township, Harnett County, North Carolina
PROPERTY OF: WADE JOURNEY HOMES
PLAT BOOK 2007 PAGE 431-436 DEED REFERENCE _____

DRAWN BY: JWW

DATE: APRIL 19, 2018