

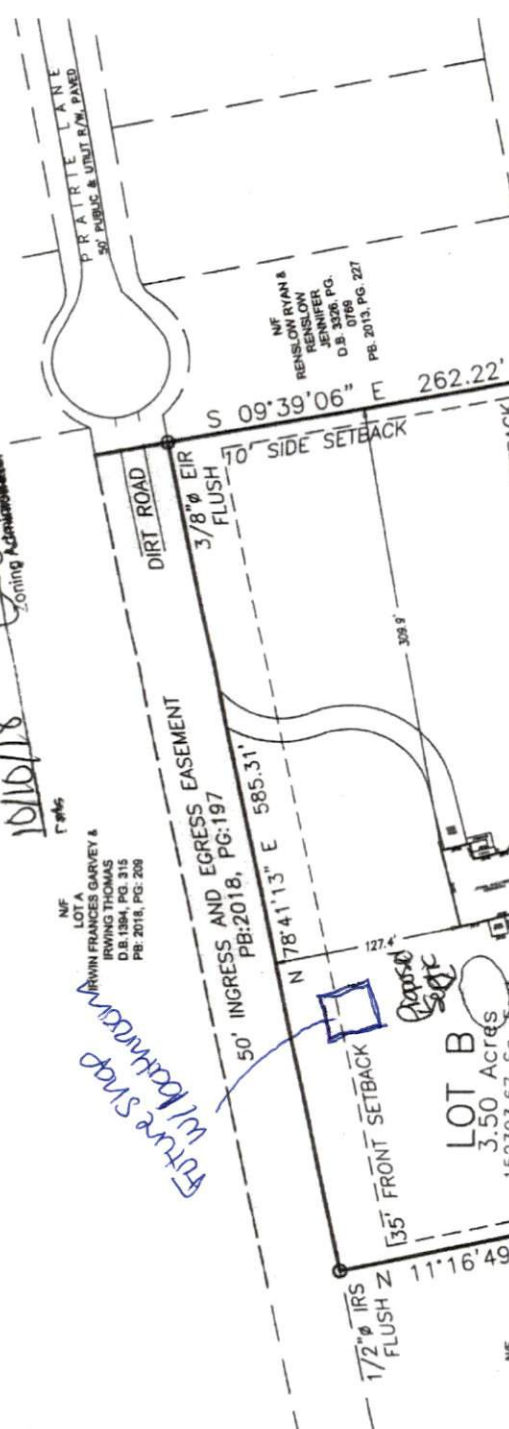
3/4" PIPE
SET
3/4" ROD

CORNER

SITE PLAN APPROVAL SFD
DISTRICT RA-200R USE SFD
#BEDROOMS 3
10/10/18
Zoning Administrator

NF
LOTA GARVEY &
IRWIN FRANCES GARVEY
D.B. 1384, PG. 315
PB: 2018, PG. 208

Future Strip
will be returned
to the State



NF
RENSLOW RYAN &
RENSLOW
JENNIFER
D.B. 3358, PG.
0168
PB: 2013, PG. 227

NF
LOT A
IRWIN FRANCES GARVEY &
IRWIN THOMAS
D.B. 1384, PG. 315
PB: 2018, PG. 208

NF
KARTON PROPERTIES LLC
D.B. 3070, PG. 0782
PLAT CABINET F, SLIDE 733 C

NF
MATSON SHANE & MATSON TINA
D.B. 2400, PG. 0094
PLAT CABINET F, SLIDE 733 C

NF
KARTON PROPERTIES LLC
D.B. 3070, PG. 0782
PLAT CABINET F, SLIDE 733 C

NF
MONROE JOSEPH &
MONROE RUTH
D.B. 2102, PG. 0106
PLAT CABINET F, SLIDE 733 C

NF
VERDOSA PROPERTIES LLC
D.B. 3556, PG. 0410
PLAT CABINET F, SLIDE 733 C

NF
KARTON PROPERTIES LLC
D.B. 3070, PG. 0782
PLAT CABINET F, SLIDE 77

CONTROL CORNER
1/2" Ø EIR
4" ABOVE
N: 572897.4520
E: 1998672.0410
NC GRID;

S 09°39'06" E 262.22'

70' SIDE SETBACK

25' REAR SETBACK

50' INGRESS AND EGRESS EASEMENT
PB: 2018, PG: 197

N 78°41'13" E 585.31'

15' FRONT SETBACK

LOT B
3.50 Acres
152393.67 Sq. Feet

S 78°42'46" W 577.86'

1/2" Ø IRS
FLUSH Z 11°16'49" W 261.95'

1/2" Ø IRS
FLUSH