

DESCRIPTION: PLOT PLAN
 RECORDED: DB 3870, PG 159 / MP 2004, PG 416
 ADDRESS: 221 WILLOWCROFT DR., DUNN, NC, 28334
 COUNTY/STATE: HARNETT/NC DATE: 03/25/2021
 SCALE OF DRAWING: 1"=40' DRAWN BY: JWM
 ZONED: RA-30 REVIEWED BY: KBB
 PARCEL ID NUMBER: 1518-60-9752.000

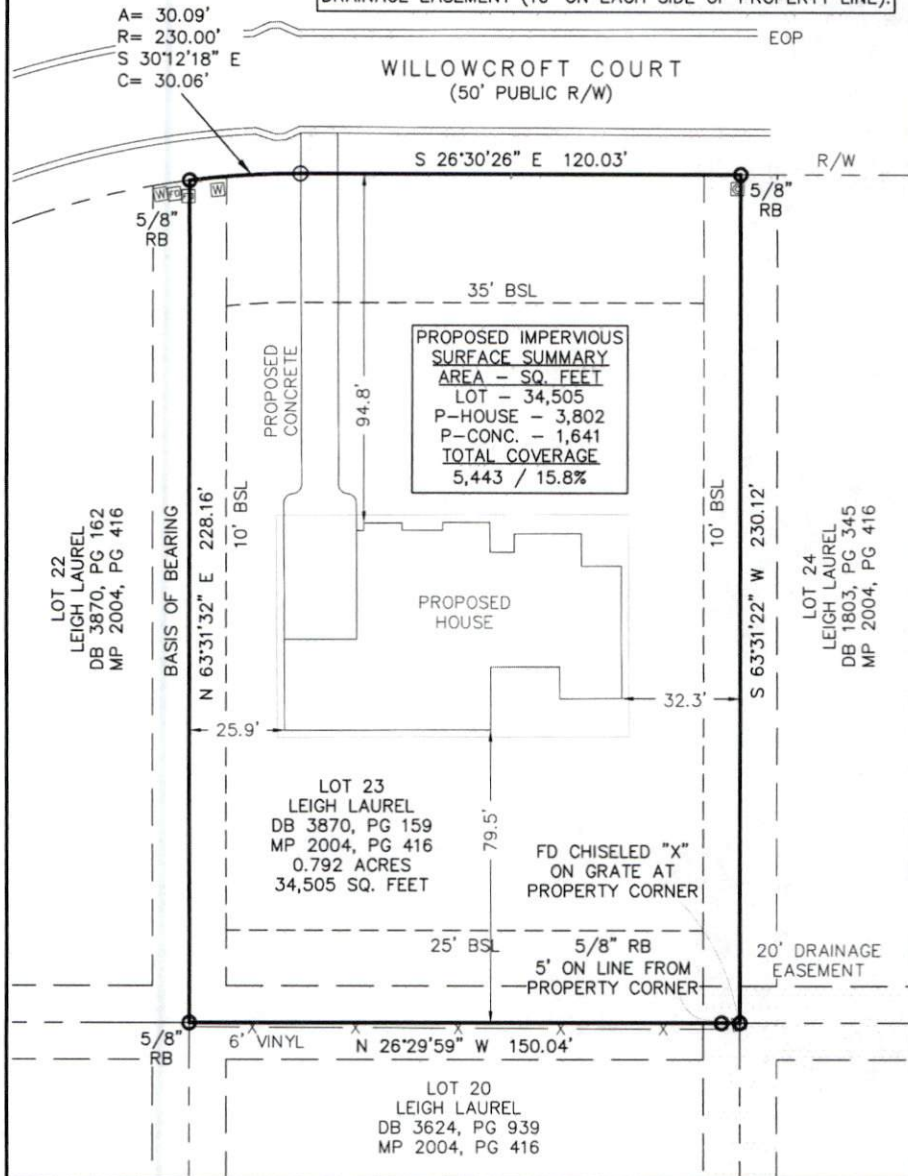
SITE DATA	
ZONING:	RA-30
LOT SIZE	N/A
PRIMARY STREET	35' MIN
SIDE STREET	XX' MIN
SIDE LOT LINE	10' MIN
REAR LOT LINE	25' MIN
BUILDING HEIGHT	35'
IMPERVIOUS MAX	N/A



NORTH
 PER: MP 2004, PG 416

SCALE: 1"=40'

NOTE: ALL INTERIOR LOT LINES HAVE A 20' UTILITY & DRAINAGE EASEMENT (10' ON EACH SIDE OF PROPERTY LINE).



PLOT PLAN SURVEY

PREPARED FOR: J&R HOMES
 221 WILLOWCROFT DRIVE, DUNN, NC 28334
 LOT 23 - LEIGH LAUREL SUBDIVISION
 AVERASBORO TOWNSHIP
 HARNETT COUNTY, NORTH CAROLINA - 03/25/2021

- LEGEND :
- PROPERTY CORNER FOUND (AS NOTED)
 - 5/8" REBAR WITH CAP SET
 - R/W MONUMENT
 - COMPUTED POINT
 - FIRE HYDRANT
 - ⊗ WATER METER
 - ⊗ WATER VALVE
 - ⊗ POWER POLE
 - ⊗ LIGHT POLE
 - ⊗ POWER METER
 - ⊗ POWER BOX
 - ⊗ A/C UNIT
 - ⊗ GAS METER
 - ⊗ TELEPHONE BOX
 - ⊗ CABLE BOX
 - ⊗ MANHOLE
 - ⊗ CLEAN OUT
 - ⊗ JUNCTION BOX
 - ⊗ DRAINAGE INLET
 - CONC. CONCRETE
 - EOP EDGE OF PAVEMENT
 - BSL BUILDING SETBACK
 - RB IRON REBAR
 - OTP OPEN TOP PIPE
 - X- FENCE LINE
 - R/W RIGHT-OF-WAY
 - MP MAP
 - DB DEED BOOK
 - PG PAGE

PRELIMINARY PLAT, NOT FOR RECORDATION, CONVEYANCES, OR SALES. THIS PLAN MUST BE APPROVED BY ALL STATE AND LOCAL REVIEWING AUTHORITIES FOR CONCURRENCE WITH SITE ZONING AND CODE OF ORDINANCES.

NOT FOR RECORDATION

THIS PLAN WAS PREPARED FOR THE EXCLUSIVE USE OF THE PERSON, PERSONS OR ENTITY NAMED HEREON AND DOES NOT EXTEND TO ANY UNNAMED PERSON.

© COPYRIGHT 2021 BOUNDARY ZONE, INC. THIS DRAWING AND ITS REPRODUCTIONS ARE THE PROPERTY OF THE SURVEYOR AND MAY NOT BE REPRODUCED, PUBLISHED OR USED IN ANY WAY WITHOUT THE WRITTEN PERMISSION OF BOUNDARY ZONE, INC.



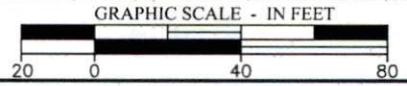
BOUNDARY zone, inc. LAND SURVEYING SERVICES & LAND PLANNING SERVICES

SURVEYING LANDSCAPE ARCHITECTURE LAND PLANNING
 WWW.BOUNDARYZONE.COM (919) 363-9226 (770) 271-5772

CORPORATE OFFICE
 454 SATELLITE BLVD, SUITE 200
 SUWANEE, GA 30024

RALEIGH OFFICE
 8024 GLENWOOD AVE SUITE 109
 RALEIGH, NC 27612

PROJECT R21051-01
 LOT 23
 SHEET 1 OF 1



03/25/2021