

I-Joist Plot ID # & Length on Top of Flange

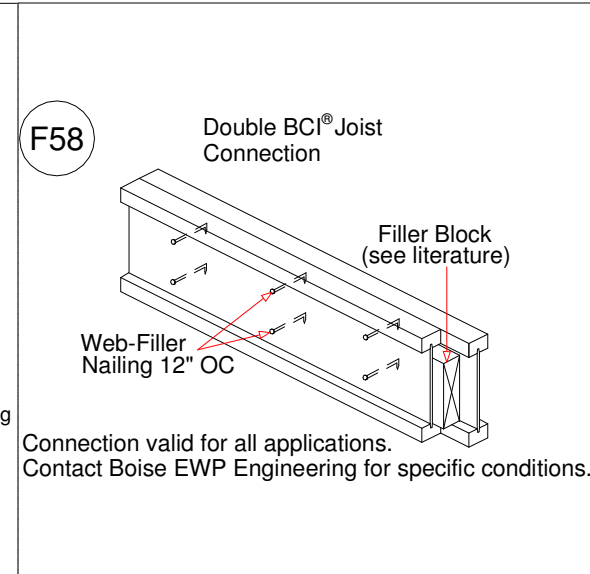
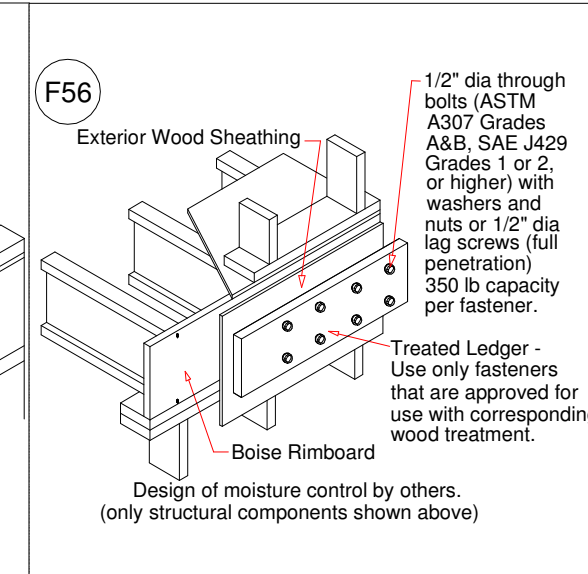
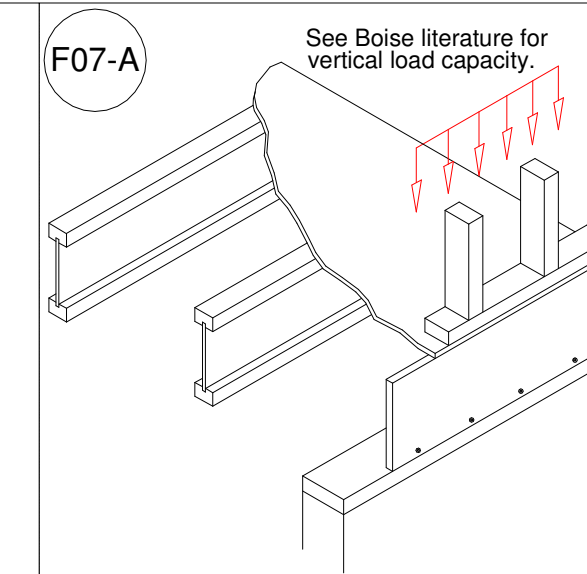
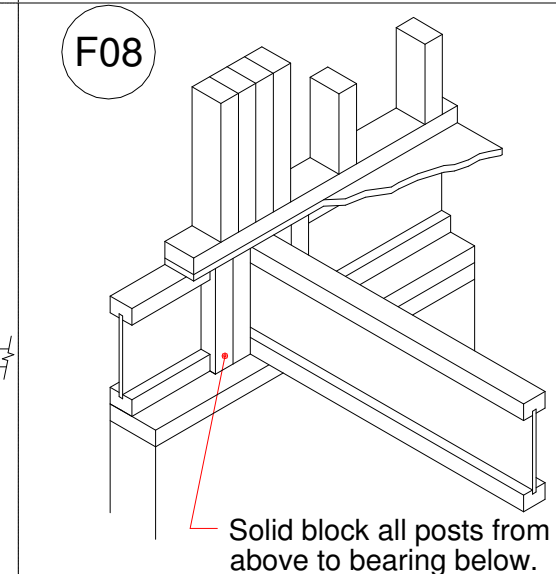
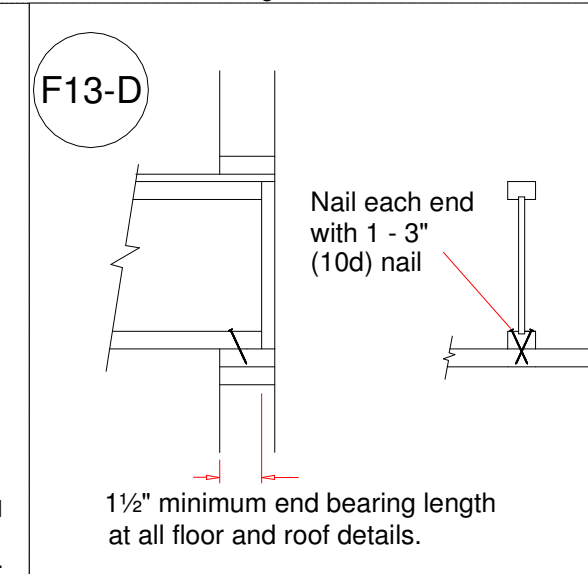
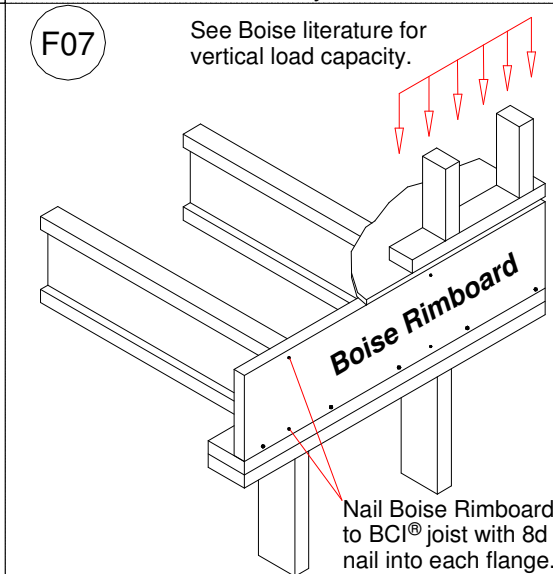
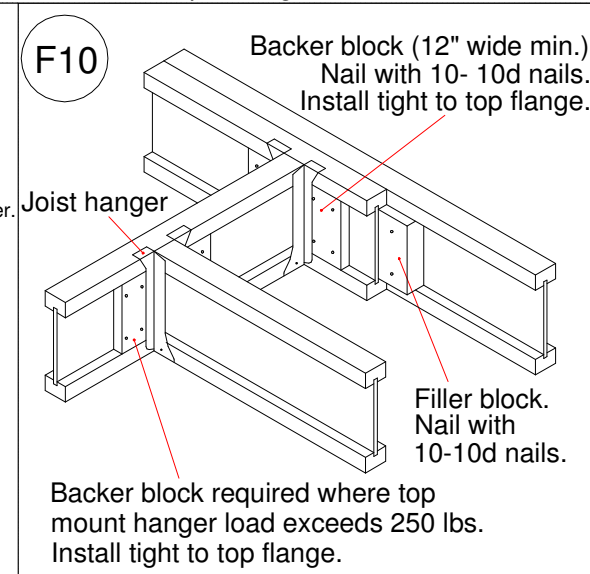
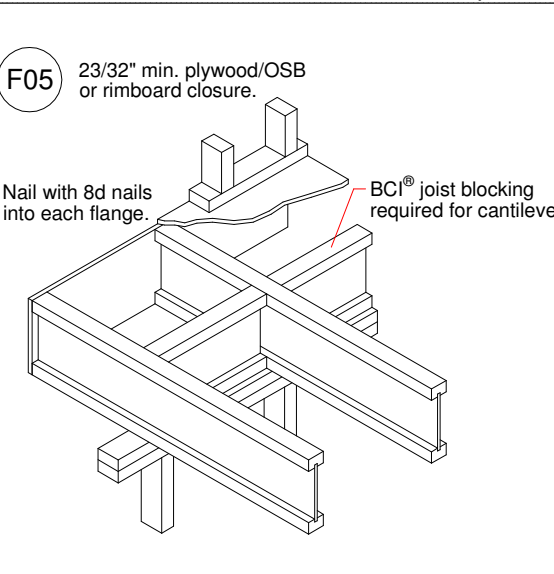
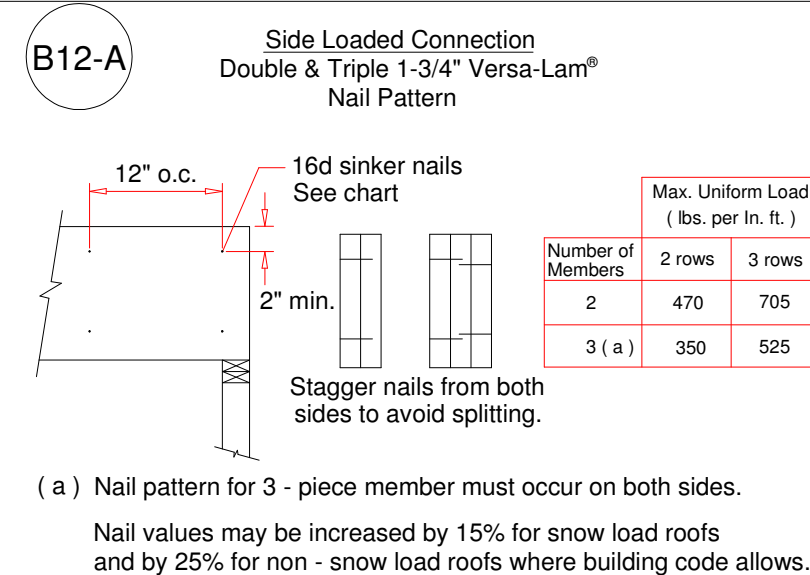
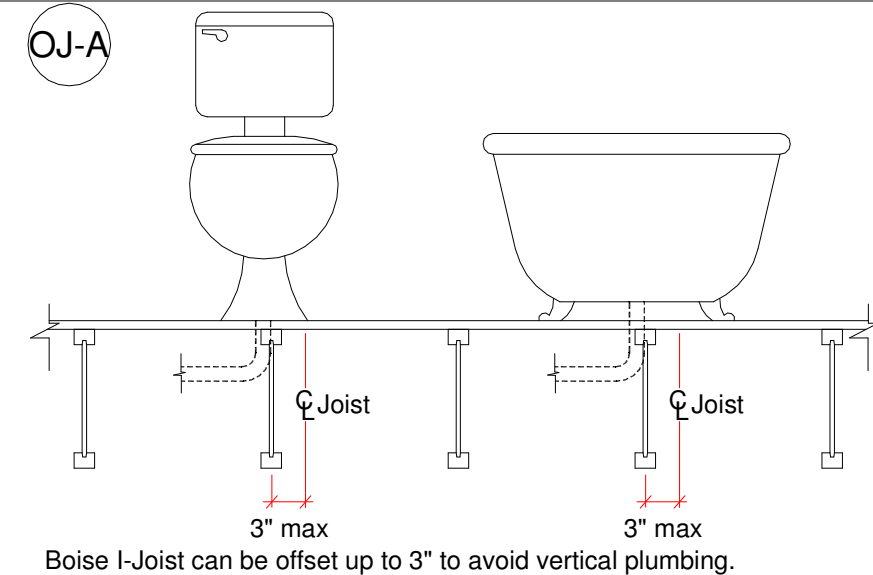
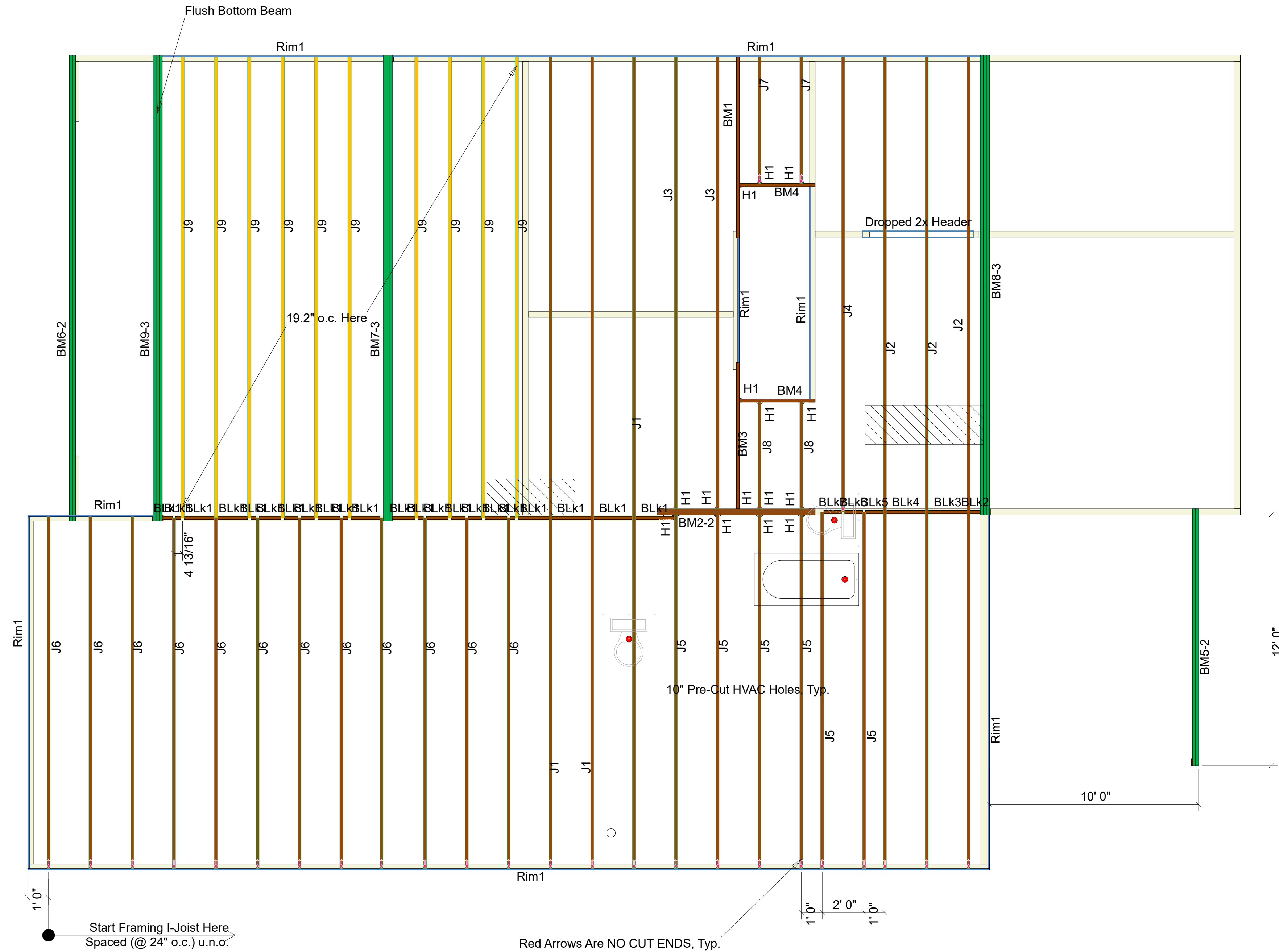
Note: Refer to current Boise Cascade Installation Guide for details not shown.

General Notes:

- 1.) "READ" Boise Installation Guide before installation of products.
- 2.) All I-Joist, LVL beams, and Rim Board must be field cut to length.
- 3.) Contractor must verify and approve the material list.
- 4.) I-Joist may be moved 3" out of its own o.c. spacing, up to 19.2" o.c., to allow for plumbing drops.
- 5.) This layout, is a placement plan and, was designed in accordance with the original design of the structure (unless otherwise noted). See original plans for additional structural notes.
- 6.) Ceramic tile floors should be supported per APA standards. Additional joists may be required.
- 7.) HVAC & PLUMBER, "Review" Boise Installation Guide (Joist Hole Location & Sizing) Chart "BEFORE" cutting the I-joist product.
- 8.) "Blocking", are Random Length I-joist, Labeled as such.

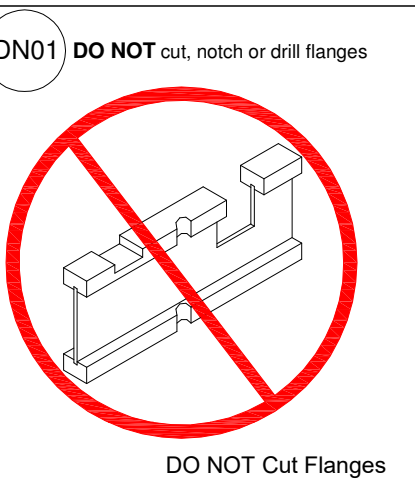
| Products | | | | |
|----------|--------|-----------------------------------------|-------|---------|
| PlotID | Length | Product | Plies | Net Qty |
| J1 | 39' 0" | 14" BCI@ 4500s-1.8 | 1 | 3 |
| J2 | 39' 0" | 14" BCI@ 4500s-1.8 | 1 | 3 |
| J3 | 22' 0" | 14" BCI@ 4500s-1.8 | 1 | 2 |
| J4 | 22' 0" | 14" BCI@ 4500s-1.8 | 1 | 1 |
| J5 | 18' 0" | 14" BCI@ 4500s-1.8 | 1 | 6 |
| J6 | 17' 0" | 14" BCI@ 4500s-1.8 | 1 | 12 |
| J7 | 7' 0" | 14" BCI@ 4500s-1.8 | 1 | 2 |
| J8 | 6' 0" | 14" BCI@ 4500s-1.8 | 1 | 2 |
| J9 | 23' 0" | 14" BCI@ 5000s-1.8 | 1 | 10 |
| BM1 | 9' 0" | 14" BCI@ 4500s-1.8 | 1 | 1 |
| BM2-2 | 8' 0" | 14" BCI@ 4500s-1.8 | 2 | 2 |
| BM3 | 7' 0" | 14" BCI@ 4500s-1.8 | 1 | 1 |
| BM4 | 4' 0" | 14" BCI@ 4500s-1.8 | 1 | 2 |
| BM5-2 | 14' 0" | 1-3/4" x 9-1/4" VERSA-LAM@ 2.0 3100 SP | 2 | 2 |
| BM6-2 | 24' 0" | 1-3/4" x 11-7/8" VERSA-LAM@ 2.0 3100 SP | 2 | 2 |
| BM7-3 | 24' 0" | 1-3/4" x 14" VERSA-LAM@ 2.0 3100 SP | 3 | 3 |
| BM8-3 | 22' 0" | 1-3/4" x 14" VERSA-LAM@ 2.0 3100 SP | 3 | 3 |
| BM9-3 | 24' 0" | 1-3/4" x 16" VERSA-LAM@ 2.0 3100 SP | 3 | 3 |
| Rim1 | 12' 0" | 1" x 14" BC RIM BOARD OSB | 1 | 12 |
| BLk1 | 22' 0" | 14" BCI@ 4500s-1.8 | 1 | 1 |
| BLk2 | 2' 0" | 14" BCI@ 4500s-1.8 | 1 | 1 |
| BLk3 | 2' 0" | 14" BCI@ 4500s-1.8 | 1 | 1 |
| BLk4 | 2' 0" | 14" BCI@ 4500s-1.8 | 1 | 1 |
| BLk5 | 2' 0" | 14" BCI@ 4500s-1.8 | 1 | 1 |
| BLk6 | 2' 0" | 14" BCI@ 4500s-1.8 | 1 | 1 |
| BLk7 | 2' 0" | 14" BCI@ 4500s-1.8 | 1 | 1 |

| Connector Summary | | | | |
|-------------------|-----|---------|-------------|--------|
| PlotID | Qty | Manuf | Product | Flange |
| H1 | 15 | Simpson | IUS 1.81/14 | None |



2nd Floor Layout

| | |
|------------|-----|
| Revisions: | BY: |
| | |
| | |



Caviness Land Development
 Replace with Lot Number
 Model CL-3090_GL
 Second Floor Layout

| |
|-----------------------|
| BC FRAMER |
| Scale: Not to a Scale |
| Date: 9-21-2018 |
| By: |
| File: |
| DWG: |
| Sheet: 1 of 1 |