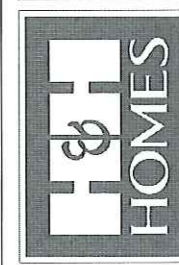


**RENAISSANCE**  
RESIDENTIAL DESIGN, INC.  
4810 GLENHIST CT. 1 RALEIGH, NC 27612  
(919) 649-4128  
WWW.RRDCAROLINA.COM

"The art of transforming your vision into reality."  
RENAISSANCE RESIDENTIAL DESIGN, INC. RESERVES THE RIGHT TO MAKE MODIFICATIONS TO FLOOR PLANS, DIMENSIONS, MATERIALS, AND SPECIFICATIONS WITHOUT NOTICE. THESE DRAWINGS ARE FOR THE PURPOSE OF CONVEYING AN ARCHITECTURAL CONCEPT ONLY. REHAUSANCE RESIDENTIAL DESIGN, INC. HEREBY EXPRESSLY RESERVES ITS COMMON LAW COPYRIGHT AND OTHER PROPERTY RIGHTS IN THESE PLANS. THESE PLANS AND DRAWINGS ARE NOT TO BE REPRODUCED, CHANGED, OR COPIED IN ANY FORM OR MANNER WITHOUT FIRST OBTAINING THE EXPRESS WRITTEN CONSENT OF RENAISSANCE RESIDENTIAL DESIGN, INC. IF YOU ARE THEY TO BE ASSIGNED TO ANY THIRD PARTY WITHOUT FIRST OBTAINING WRITTEN PERMISSION AND CONSENT.

**J.S. THOMPSON**  
ENGINEERING, INC.  
606 WADE AVE., SUITE 104  
RALEIGH, NC 27605  
PHONE: (919) 789-9919  
FAX: (919) 789-9921  
N.C. LICENSE NO. C-1333

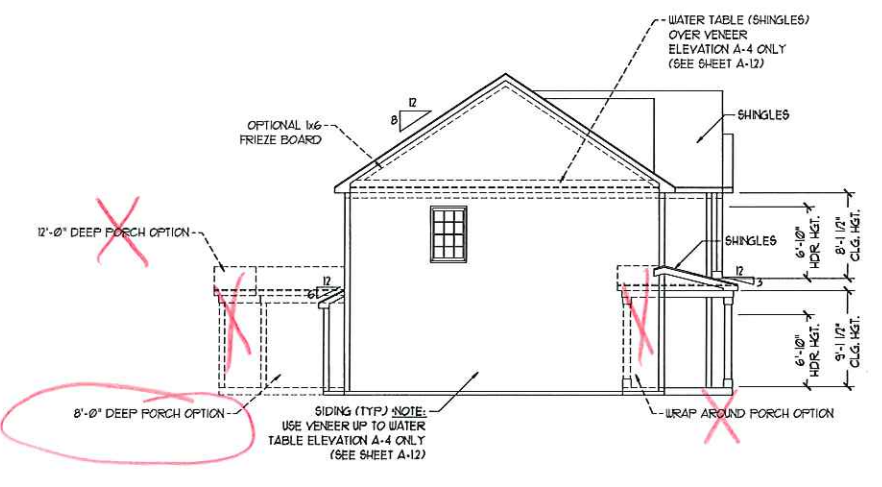
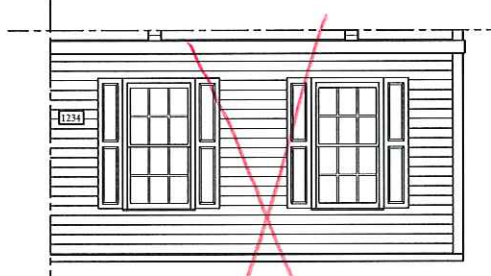


PRICES, PROMOTIONS, INCENTIVES, FEATURES, MATERIALS, COORDINATE ELEVATIONS, DIMENSIONS, AND FINISHES ARE SUBJECT TO CHANGE WITHOUT NOTICE. SQUARE FOOTAGE AND DIMENSIONS ARE ESTIMATED AND MAY VARY IN ACTUAL CONSTRUCTION. ACTUAL LOCATION OF HOUSE ON LOT IS NOT GUARANTEED. FLOOR PLANS AND ELEVATION RENDERINGS ARE ARTIST CONCEPTIONS. FLOOR PLANS ARE THE COPYRIGHTED PROPERTY OF H&H HOMES. ANY USE, REPRODUCTION, OR MODIFICATION OF THESE PLANS WITHOUT THE WRITTEN PERMISSION OF H&H HOMES IS PROHIBITED. SEE NEW HOME SALES CONSULTANT FOR CURRENT DETAILS. COPYRIGHT 2017 H&H HOMES

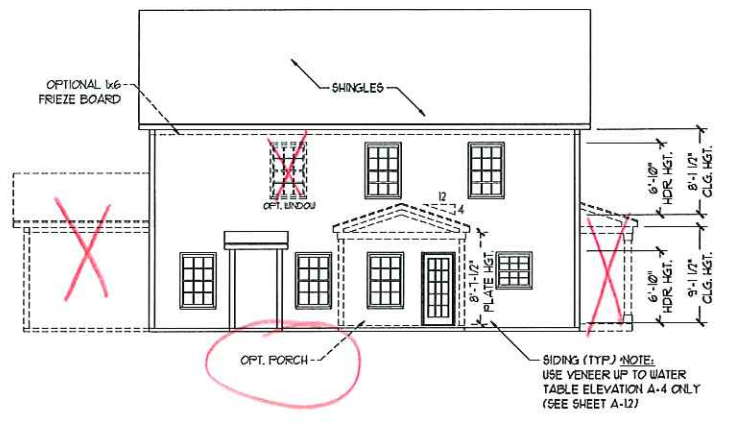


FRONT ELEVATION-A  
SCALE: 1/4" = 1'-0"

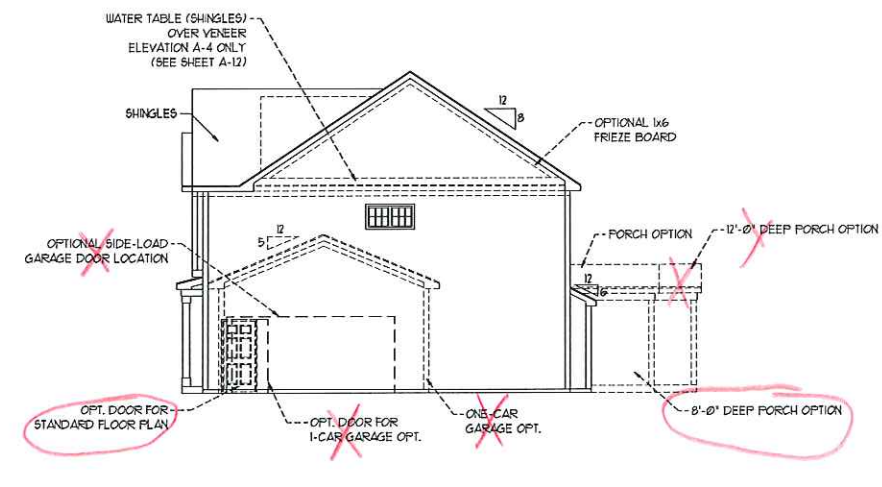
**\*\* NOTE: SEE PAGE A-11 FOR SPECIFIC FRONT ELEVATION-A DETAILS. SEE PAGE A-12 FOR A-4 (ALL BRICK) ELEVATIONS**



LEFT ELEVATION  
SCALE: 1/8" = 1'-0"



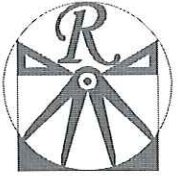
REAR ELEVATION  
SCALE: 1/8" = 1'-0"



RIGHT ELEVATION  
SCALE: 1/8" = 1'-0"

H&H HOMES, INC.  
TOPSAIL DRIVE RIGHT  
Anderson Creek Crossing 115  
DATE: OCTOBER 18, 2017  
REV.:  
SCALE: AS NOTED  
DRAWN BY: WG  
ENGINEERED BY: WLF  
REVIEWED BY: JES

A - ELEVATIONS  
A-1

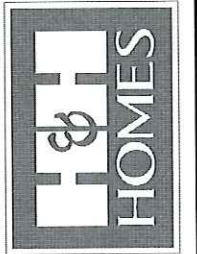


**RENAISSANCE**  
RESIDENTIAL DESIGN, INC.  
4810 GLENMIST CT. | RALEIGH, NC 27612  
(919) 858-4128  
WWW.RRDCAROLINA.COM  
"The art of transforming your vision into reality."

RENAISSANCE RESIDENTIAL DESIGN, INC. RESERVES THE RIGHT TO MAKE MODIFICATIONS TO FLOOR PLANS, COVERINGS, MATERIALS, AND SPECIFICATIONS WITHOUT NOTICE. THESE DRAWINGS ARE FOR THE PURPOSE OF CONVEYING AN ARCHITECTURAL CONCEPT ONLY.

RENAISSANCE RESIDENTIAL DESIGN, INC. HEREBY EXPRESSLY RESERVES ITS COMMON LAW COPYRIGHT AND OTHER PROPERTY RIGHTS IN THESE PLANS. THESE PLANS AND DRAWINGS ARE NOT TO BE REPRODUCED, CHANGED, OR COPIED IN ANY FORM OR MANNER WITHOUT FIRST OBTAINING THE EXPRESS WRITTEN CONSENT OF RENAISSANCE RESIDENTIAL DESIGN, INC. FOR ANY THEY TO BE ASSIGNED TO ANY THIRD PARTY WITHOUT FIRST OBTAINING SAID WRITTEN PERMISSION AND CONSENT.

**J.S. THOMPSON**  
**ENGINEERING, INC.**  
606 WADE AVE., SUITE 104  
RALEIGH, NC 27605  
PHONE: (919) 789-9919  
FAX: (919) 789-9921  
N.C. LICENSE NO. C-1733



PRICES, PROMOTIONS, INCENTIVES, FEATURES, OPTIONS, FLOOR PLANS, ELEVATIONS, DESIGNS, MATERIALS AND FINISHES ARE SUBJECT TO CHANGE AND DIMENSIONS ARE ESTIMATED AND MAY VARY IN ACTUAL CONSTRUCTION. ACTUAL POSITION OF HOUSE ON LOT WILL BE DETERMINED BY THE SITE PLAN AND FOOTPRINT. THESE DRAWINGS ARE THE COPYRIGHTED PROPERTY OF H&H HOMES. ANY USE, REPRODUCTION, ADAPTATION, OR DISPLAY OF THE PLANS IS STRICTLY PROHIBITED WITHOUT THE WRITTEN PERMISSION OF H&H HOMES. CURRENT DETAILS. COPYRIGHT © 2017 H&H HOMES.

H&H HOMES, INC.  
TOPSAIL DRIVE RIGHT

DATE: OCTOBER 18, 2017  
REV.:  
SCALE: AS NOTED  
DRAWN BY: WLG  
ENGINEERED BY: WLF  
REVIEWED BY: JES

A - ELEVATION  
OPTIONS  
**A-1.1**



FRONT ELEVATION-A-1  
SCALE: 1/4" = 1'-0"



FRONT ELEVATION-A-2  
SCALE: 1/4" = 1'-0"

Stone



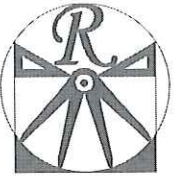
BRICK OR STONE  
LEDGE AS SPEC. (TYP.)  
  
BRICK OR STONE  
LEDGE AS SPEC. (TYP.)

FRONT ELEVATION-A-3  
SCALE: 1/4" = 1'-0"



BRICK OR STONE  
LEDGE AS SPEC. (TYP.)  
  
BRICK OR STONE  
LEDGE AS SPEC. (TYP.)

FRONT ELEVATION-A-4  
SCALE: 1/4" = 1'-0"



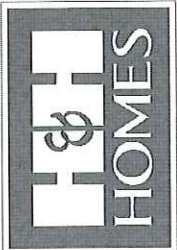
**RENAISSANCE**  
RESIDENTIAL DESIGN, INC.  
4810 GLENMIST CT. | RALEIGH, NC 27612  
(919) 618-4128

WWW.REDCAROLINA.COM  
"The art of transforming your vision into reality."

RENAISSANCE RESIDENTIAL DESIGN, INC. RESERVES THE RIGHT TO MAKE MODIFICATIONS TO FLOOR PLANS, DIMENSIONS, MATERIALS, AND SPECIFICATIONS WITHOUT NOTICE. THESE CHANGES ARE FOR THE PURPOSE OF CONVEYING AN ARCHITECTURAL CONCEPT ONLY.

RENAISSANCE RESIDENTIAL DESIGN, INC. HEREBY EXPRESSLY RESERVES ITS COMMON LAW COPYRIGHT AND OTHER PROPERTY RIGHTS IN THESE PLANS. THESE PLANS AND DRAWINGS ARE NOT TO BE REPRODUCED, CHANGED, OR COPIED IN ANY FORM OR MANNER WITHOUT FIRST OBTAINING THE EXPRESS WRITTEN CONSENT OF RENAISSANCE RESIDENTIAL DESIGN, INC. THEY ARE TO BE ASSIGNED TO ANY THIRD PARTY WITHOUT FIRST OBTAINING SAID WRITTEN PERMISSION AND CONSENT.

**J.S. THOMPSON**  
**ENGINEERING, INC.**  
606 WADE AVE., SUITE 104  
RALEIGH, NC 27605  
PHONE: (919) 788-9119  
FAX: (919) 789-9921  
N.C. LICENSE NO. C-1733



PRICES, PROMOTIONS, INCENTIVES, FEATURES, OPTIONS, FLOOR PLANS, ELEVATIONS, DESIGN, MATERIALS, FINISHES, PACKAGES AND DIMENSIONS ARE ESTIMATED AND MAY VARY IN ACTUAL CONSTRUCTION. ACTUAL POSITION OF HOUSE ON LOT WILL BE DETERMINED BY THE PLANNING AND SURVEYING DEPARTMENT. THESE PLANS ARE THE COPYRIGHTED PROPERTY OF H&H HOMES. ANY USE, REPRODUCTION, ADAPTATION, OR DISPLAY OF THESE PLANS IS STRICTLY PROHIBITED. CURRENT DETAILS. COPYRIGHT 2017 H&H HOMES.

H&H HOMES, INC.  
TOPSAIL DRIVE RIGHT

DATE: OCTOBER 18, 2017

REV:

SCALE: 1/4"=1'-0"

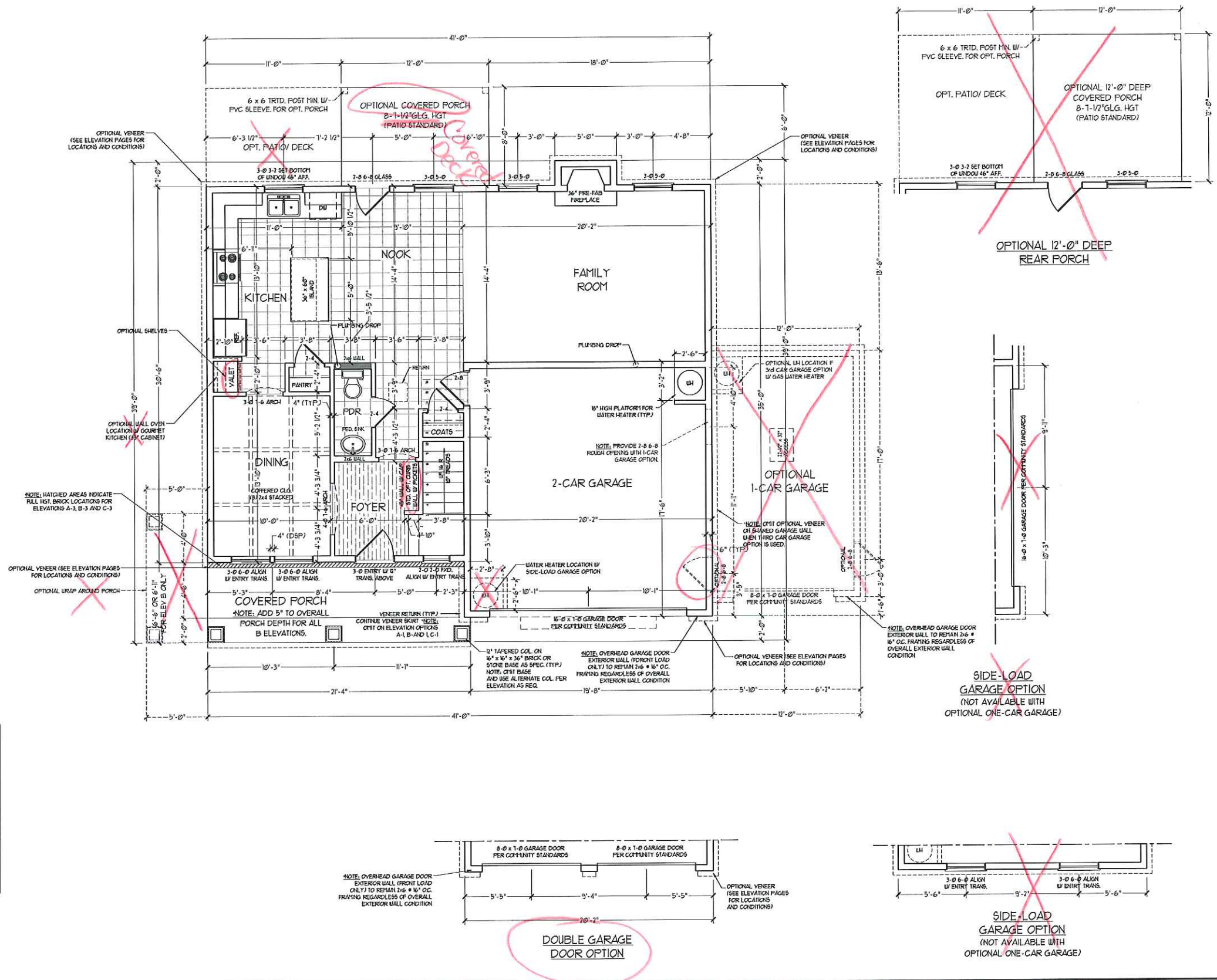
DRAWN BY: WG

ENGINEERED BY: WLF

REVIEWED BY: JES

FIRST FLOOR  
PLAN

A-4



**NOTE: ALL EXTERIOR WALLS AND ATTIC WALLS ARE TO BE 2 x 6 @ 16" O.C. (UNO), 2 x 4 @ 16" O.C. EXTERIOR WALLS MAY BE CONSTRUCTED IN LIEU OF 2 x 6 WALLS (UNO). ALL INTERIOR LOAD BEARING WALLS ARE TO BE 2 x 4 @ 16" O.C. (UNO) AND NON-LOAD BEARING INTERIOR WALLS ARE TO BE 2 x 4 @ 24" O.C. (UNO).**

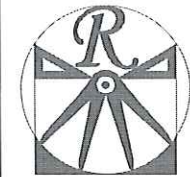
**\* SHADED WALLS ARE TO BE 2 x 6 @ 16" O.C. (LOAD BEARING) OR 2 x 6 @ 24" O.C. (NON-LOAD BEARING) REGARDLESS OF EXTERIOR WALL CONDITION**

**SQUARE FOOTAGE**

|                  |              |
|------------------|--------------|
| 1st FLOOR:       | 949 SQ. FT.  |
| 2nd FLOOR:       | 1351 SQ. FT. |
| TOTAL:           | 2300 SQ. FT. |
| FRONT PORCH:     | 131 SQ. FT.  |
| STD. REAR PATIO: | 96 SQ. FT.   |
| GARAGE:          | 401 SQ. FT.  |

**SQUARE FOOTAGE (OPTIONS)**

|                                 |              |
|---------------------------------|--------------|
| FIRST FLOOR (BRICK):            | 999 SQ. FT.  |
| SECOND FLOOR (BRICK):           | 1405 SQ. FT. |
| TOTAL (BRICK):                  | 2404 SQ. FT. |
| GARAGE (BRICK):                 | 418 SQ. FT.  |
| FRONT PORCH (WRAP OPTION):      | 53 SQ. FT.   |
| REAR PORCH (8'-0 DEEP):         | 96 SQ. FT.   |
| REAR PORCH (12'-0 DEEP):        | 144 SQ. FT.  |
| OPT. PATIO/ DECK: (8'-0 DEEP):  | 88 SQ. FT.   |
| OPT. PATIO/ DECK: (12'-0 DEEP): | 132 SQ. FT.  |
| 1-CAR GARAGE:                   | 240 SQ. FT.  |



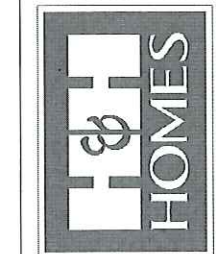
**RENAISSANCE**  
RESIDENTIAL DESIGN, INC.  
4810 GLENHIST CT. | RALEIGH, NC 27612  
(919) 849-4128  
WWW.RENAISSANCEDR.COM

"The art of transforming your vision into reality."

RENAISSANCE RESIDENTIAL DESIGN, INC. RESERVES THE RIGHT TO MAKE MODIFICATIONS TO FLOOR PLANS, DIMENSIONS, MATERIALS, AND SPECIFICATIONS WITHOUT NOTICE. THESE DIMENSIONS ARE FOR THE PURPOSE OF CONCEPTUAL ARCHITECTURAL CONCEPT ONLY.

RENAISSANCE RESIDENTIAL DESIGN, INC. HEREBY EXPRESSLY RESERVES ITS COMMON LAW COPYRIGHT AND OTHER PROPERTY RIGHTS IN THESE PLANS. THESE PLANS AND DRAWINGS ARE NOT TO BE REPRODUCED, CHANGED OR COPIED IN ANY FORM OR MANNER WITHOUT FIRST OBTAINING THE EXPRESS WRITTEN CONSENT OF RENAISSANCE RESIDENTIAL DESIGN, INC. FOR AND THEY TO BE ASSIGNED TO ANY THIRD PARTY WITHOUT FIRST OBTAINING SAID WRITTEN PERMISSION AND CONSENT.

**J.S. THOMPSON**  
**ENGINEERING, INC.**  
605 WADE AVE., SUITE 104  
RALEIGH, NC 27605  
PHONE: (919) 180-9919  
FAX: (919) 789-9921  
N.C. LICENSE NO. C-1733



PRICES, PROMOTIONS, INCENTIVES, FEATURES, OPTIONS, FLOOR PLANS, ELEVATIONS, DESIGN, MATERIALS, DIMENSIONS, AND FINISHES WHICH MAY VARY IN ACTUAL CONSTRUCTION. ACTUAL POSITION OF HOUSE ON LOT WILL BE DETERMINED BY THE PLANNING AND LOT PLAN. THESE PLANS AND DRAWINGS ARE THE PROPERTY OF H&H HOMES. ANY USE, REPRODUCTION, ADAPTATION, OR DISPLAY OF THESE PLANS IS STRICTLY PROHIBITED WITHOUT THE WRITTEN PERMISSION OF H&H HOMES. © 2017 H&H HOMES

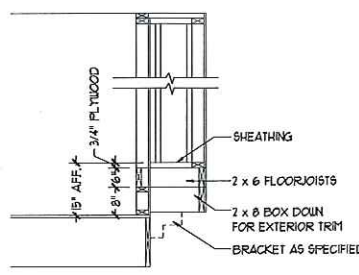
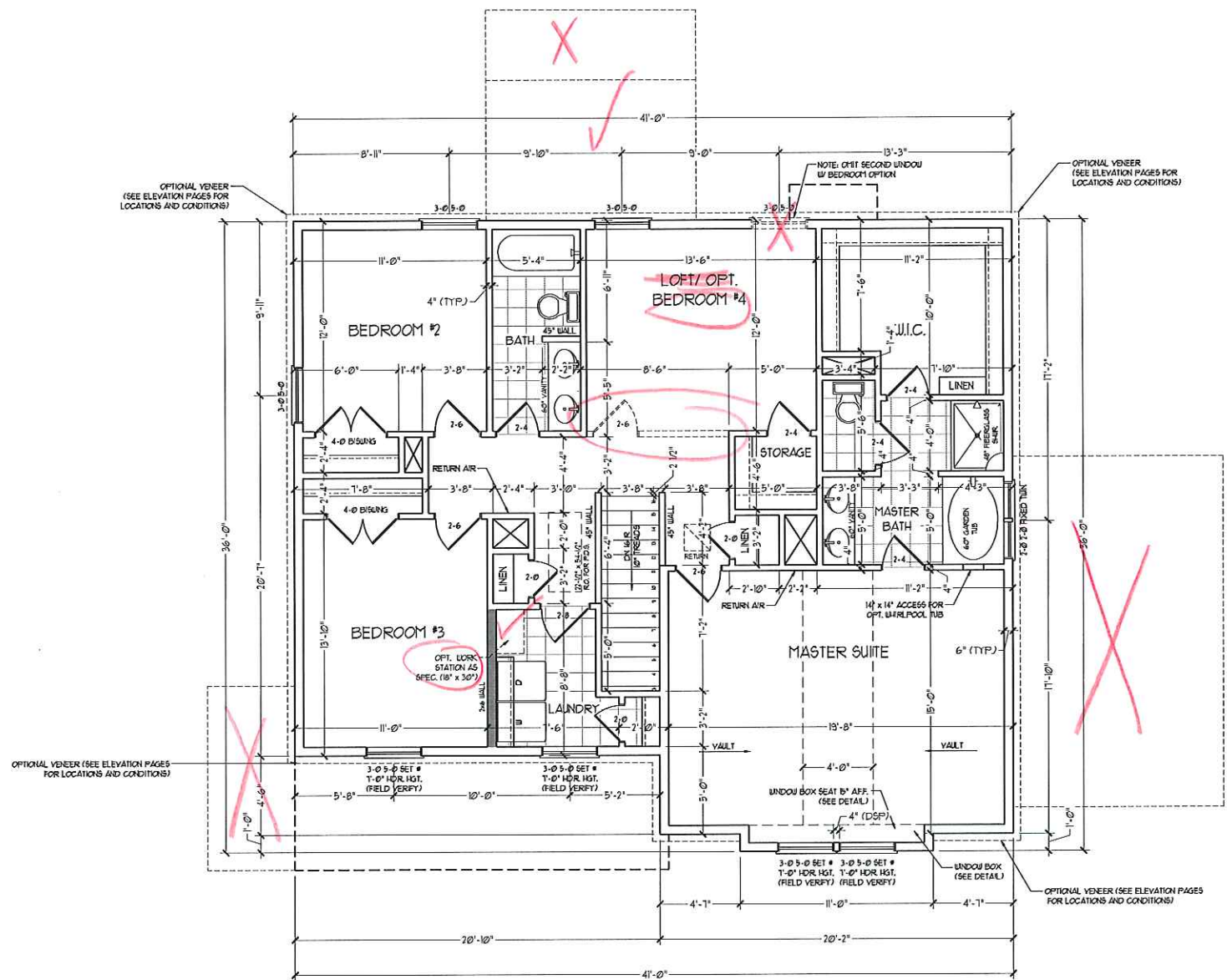
H&H HOMES, INC.  
TOPSAIL DRIVE RIGHT

DATE: OCTOBER 18, 2017  
REV.:  
SCALE: 1/4"=1'-0"  
DRAWN BY: WG  
ENGINEERED BY: WLF  
REVIEWED BY: JES

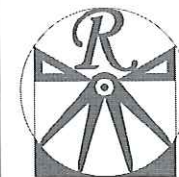
SECOND FLOOR PLAN  
A-5

**NOTE: ALL EXTERIOR WALLS AND ATTIC WALLS ARE TO BE 2 x 6 @ 16" O.C. (UNO). 2 x 4 @ 16" O.C. EXTERIOR WALLS MAY BE CONSTRUCTED IN LIEU OF 2 x 6 WALLS (UNO). ALL INTERIOR LOAD BEARING WALLS ARE TO BE 2 x 4 @ 16" O.C. (UNO) AND NON-LOAD BEARING INTERIOR WALLS ARE TO BE 2 x 4 @ 24" O.C. (UNO).**

**2x6 WALL**  
SHADED WALLS ARE TO BE 2 x 6 @ 16" O.C. (LOAD BEARING) OR 2 x 6 @ 24" O.C. (NON-LOAD BEARING) REGARDLESS OF EXTERIOR WALL CONDITION



WINDOW BOX DETAIL  
SCALE: NTS



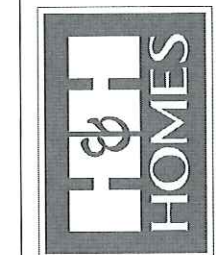
**RENAISSANCE**  
RESIDENTIAL DESIGN, INC.  
4810 GLENMIST CT., | RALEIGH, NC 27612  
(919) 648-4128

WWW.RENDESIGN.COM  
"The art of transforming your vision into reality."

RENAISSANCE RESIDENTIAL DESIGN, INC. HEREBY EXPRESSLY RESERVES ITS RIGHTS TO MAKE MODIFICATIONS TO FLOOR PLANS, DIMENSIONS, MATERIALS, AND SPECIFICATIONS WITHOUT NOTICE. THESE DRAWINGS ARE FOR THE PURPOSE OF CONVEYING AN ARCHITECTURAL CONCEPT ONLY.

RENAISSANCE RESIDENTIAL DESIGN, INC. HEREBY EXPRESSLY RESERVES ITS COMMON LAW COPYRIGHT AND OTHER PROPERTY RIGHTS IN THESE PLANS. THESE PLANS AND DRAWINGS ARE NOT TO BE REPRODUCED, CHANGED, OR COPIED IN ANY FORM OR MANNER WITHOUT FIRST OBTAINING THE EXPRESS WRITTEN CONSENT OF RENAISSANCE RESIDENTIAL DESIGN, INC. FOR ANY USE. THEY TO BE ASSIGNED TO ANY THIRD PARTY WITHOUT FIRST OBTAINING SAID WRITTEN PERMISSION AND CONSENT.

**J.S. THOMPSON**  
ENGINEERING, INC.  
606 WADE AVE., SUITE 104  
RALEIGH, NC 27605  
PHONE: (919) 789-9919  
FAX: (919) 789-9921  
NC LICENSE NO.: C1733

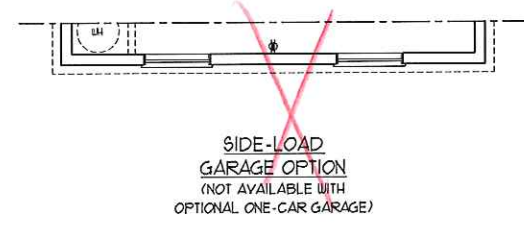
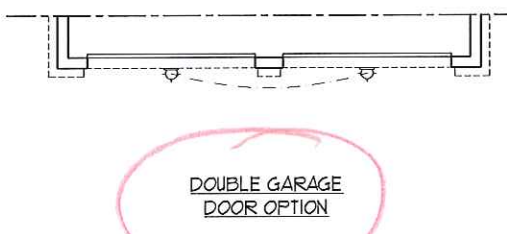
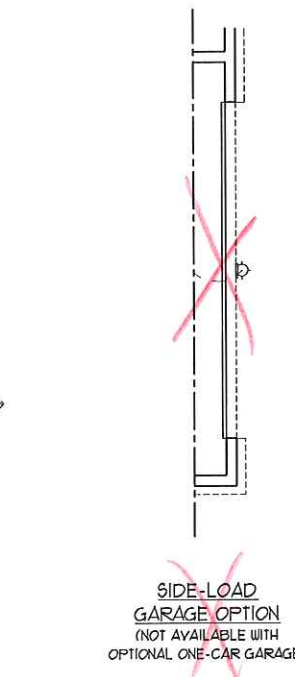
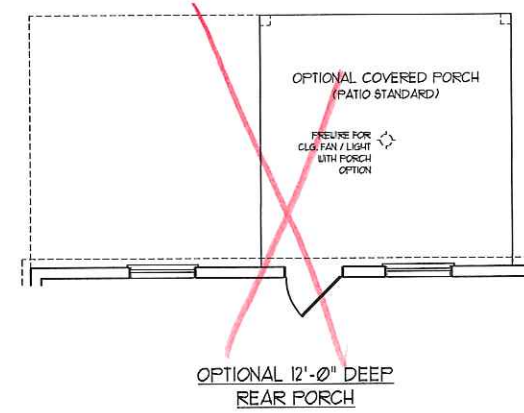
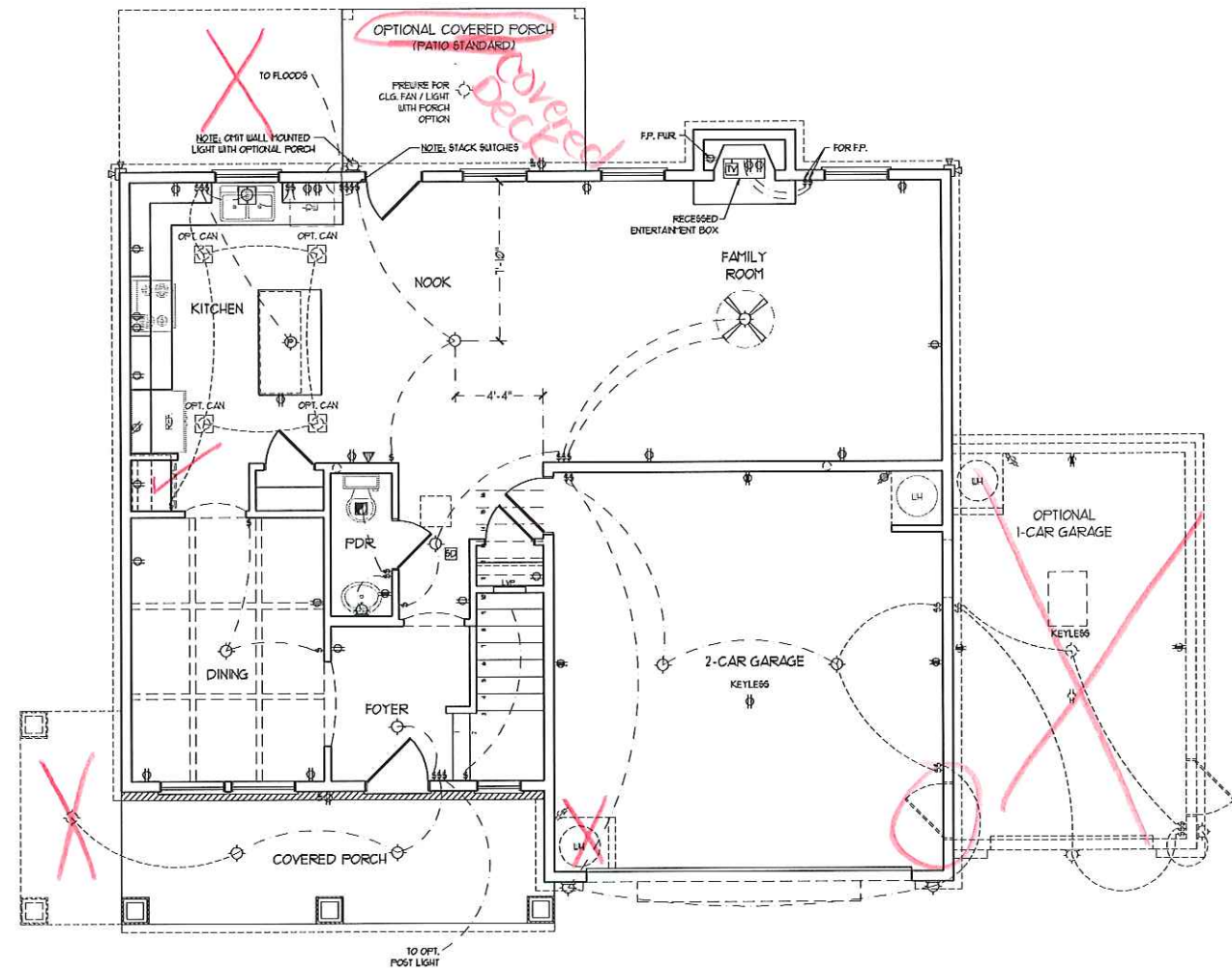
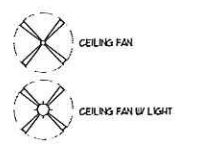


PRICES, PROMOTIONS, INCENTIVES, FEATURES, OPTIONS, FLOOR PLANS, ELEVATIONS, DESIGNS, MATERIALS, FINISHES, DIMENSIONS AND DIMENSIONS ARE ESTIMATED AND MAY VARY IN ACTUAL CONSTRUCTION. ACTUAL POSITION OF HOUSE ON LOT WILL BE DETERMINED BY THE SITE PLAN AND PLAT PLAN. THESE DRAWINGS ARE THE PROPERTY OF H&H HOMES, INC. ANY USE, REPRODUCTION, ADAPTATION, OR DISPLAY OF THESE PLANS IS STRICTLY PROHIBITED WITHOUT THE WRITTEN PERMISSION OF H&H HOMES. COPYRIGHT © 2017 H&H HOMES

**ELECTRICAL LAYOUT NOTES:**

- 1) BLOCK AND WIRE FOR ALL CEILING FANS PER PLAN.
- 2) WANTY LIGHTS TO BE SET # 90" AFF. (TYP)
- 3) ADDITIONAL EXTERIOR OUTLETS REQUIRED BY CODE TO BE LOCATED BY ELECTRICIAN.
- 4) PLACE SWITCHES 6" FROM FRONT ROUGH OPENINGS.

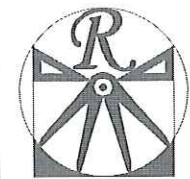
- ELECTRICAL LEGEND**
- 10 V OUTLET
  - 10 V GFI OUTLET
  - 10 V SWITCHED OUTLET
  - 10 V BASEBOARD OUTLET
  - 4-FLEX
  - COUNTER OR FLOOR MOUNTED
  - COUNTER OR FLOOR MOUNTED 10V GFI
  - LEATHERPROOF
  - 220 V OUTLET
  - 10 V DEDICATED CIRCUIT
  - 220 V DEDICATED CIRCUIT
  - SPECIAL PURPOSE (240 V, ETC.)
  - WALL MOUNT LIGHT
  - CEILING MOUNT LIGHT
  - PENDANT LIGHT
  - RECESSED CAN LIGHT
  - TRN CAN LIGHT
  - EYEBALL LIGHT
  - FLUORESCENT LIGHT
  - UNDERCABINET LIGHT
  - FLOOD LIGHT
  - SWITCH
  - 3-WAY SWITCH
  - 4-WAY SWITCH
  - DIFFER SWITCH
  - TELEPHONE
  - TV CONNECTION
  - CONDUIT FOR COMPONENT WIRING
  - SPEAKER
  - DOORBELL CHIME
  - 10 V SMOKE DETECTOR
  - EXHAUST FAN
  - LOW VOLTAGE PANEL



H&H HOMES, INC.  
TOPSAIL DRIVE RIGHT

DATE: OCTOBER 18, 2017  
REV:  
SCALE: 1/4" = 1'-0"  
DRAWN BY: WG  
ENGINEERED BY: WLF  
REVIEWED BY: JES

FIRST FLOOR ELECTRICAL PLAN  
E-1



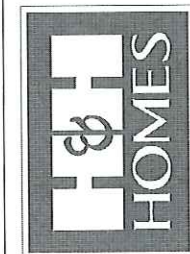
**RENAISSANCE**  
RESIDENTIAL DESIGN, INC.  
4810 GLENMIST CT., RALEIGH, NC 27612  
(919) 548-4128  
WWW.RENDESIGN.COM

"The art of transforming your vision into reality."

RENAISSANCE RESIDENTIAL DESIGN, INC. HEREBY EXPRESSLY RESERVES ITS COMMON LAW COPYRIGHT AND OTHER PROPERTY RIGHTS IN THESE PLANS. THESE PLANS AND DRAWINGS ARE NOT TO BE REPRODUCED, CHANGED OR COPIED IN ANY FORM OR MANNER WITHOUT FIRST OBTAINING THE EXPRESS WRITTEN CONSENT OF RENAISSANCE RESIDENTIAL DESIGN, INC. THEY ARE TO BE ASSIGNED TO ANY THIRD PARTY WITHOUT FIRST OBTAINING WRITTEN PERMISSION AND CONSENT.

RENAISSANCE RESIDENTIAL DESIGN, INC. HEREBY EXPRESSLY RESERVES ITS COMMON LAW COPYRIGHT AND OTHER PROPERTY RIGHTS IN THESE PLANS. THESE PLANS AND DRAWINGS ARE NOT TO BE REPRODUCED, CHANGED OR COPIED IN ANY FORM OR MANNER WITHOUT FIRST OBTAINING THE EXPRESS WRITTEN CONSENT OF RENAISSANCE RESIDENTIAL DESIGN, INC. THEY ARE TO BE ASSIGNED TO ANY THIRD PARTY WITHOUT FIRST OBTAINING WRITTEN PERMISSION AND CONSENT.

**J.S. THOMPSON**  
ENGINEERING, INC.  
606 WADE AVE., SUITE 104  
RALEIGH, NC 27605  
PHONE: (919) 280-9010  
FAX: (919) 282-9921  
N.C. LICENSE NO. C-1733

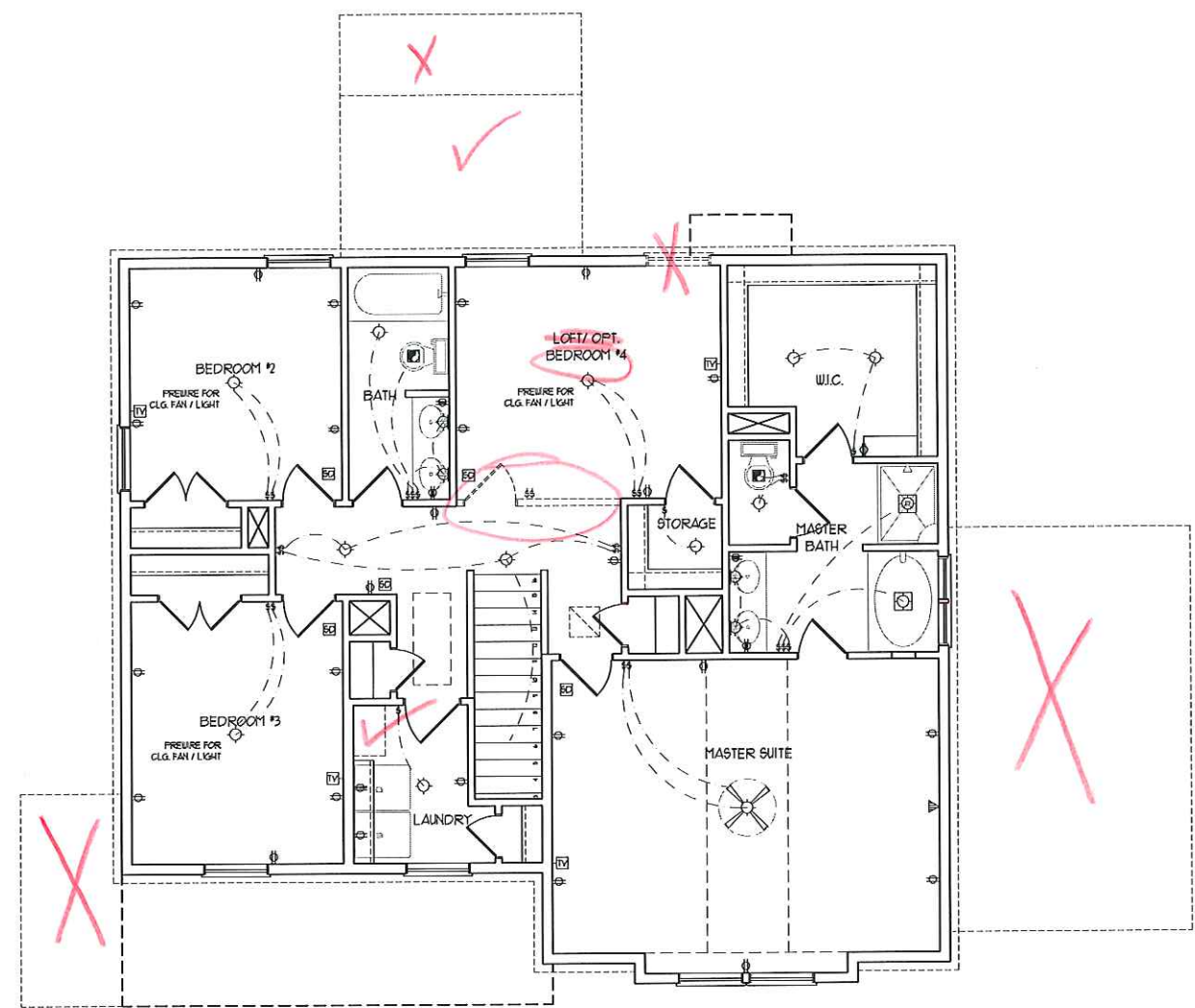


PRICES, PROMOTIONS, INCENTIVES, FEATURES, OPTIONS, FLOOR PLANS, ELEVATIONS, DESIGNS, MATERIALS AND DIMENSIONS ARE SUBJECT TO CHANGE WITHOUT NOTICE AND MAY VARY IN ACTUAL CONSTRUCTION. ACTUAL POSITION OF HOUSE ON LOT WILL BE DETERMINED BY THE SITE PLAN AND LOT PLAN. CONCEPTS, PLANS AND DRAWINGS ARE THE PROPERTY OF H&H HOMES. ANY USE, REPRODUCTION, ADAPTATION, OR DISPLAY OF THESE PLANS IS STRICTLY PROHIBITED. COPYRIGHT © 2017 H&H HOMES

**ELECTRICAL LAYOUT NOTES:**

- 1) BLOCK AND WIRE FOR ALL CEILING FANS PER PLAN.
- 2) VANITY LIGHTS TO BE SET @ 30" AFF. (TYP.)
- 3) ADDITIONAL EXTERIOR OUTLETS REQUIRED BY CODE TO BE LOCATED BY ELECTRICIAN.
- 4) PLACE SWITCHES 6" (MIN) FROM ROUGH OPENINGS.

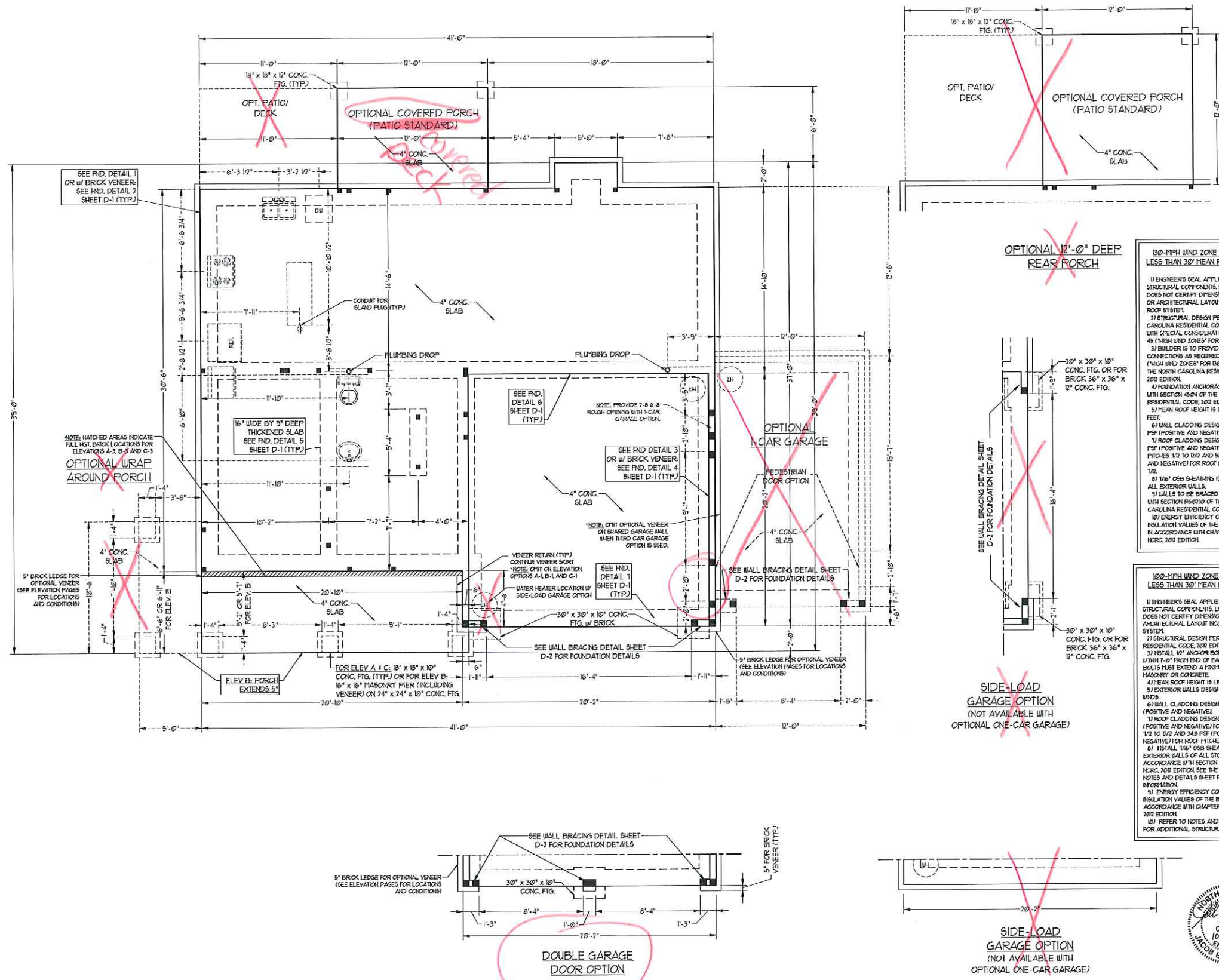
- ELECTRICAL LEGEND**
- ⊕ 120 V OUTLET
  - ⊕ 120 V GFI OUTLET
  - ⊕ 120 V SWITCHED OUTLET
  - ⊕ 120 V BASEBOARD OUTLET
  - ⊕ 4-FLEX
  - ⊕ COUNTER OR FLOOR MOUNTED
  - ⊕ COUNTER OR FLOOR MOUNTED 120V GFI
  - ⊕ LEATHERPROOF
  - ⊕ 220 V OUTLET
  - ⊕ 120 V DEDICATED CIRCUIT
  - ⊕ 220 V DEDICATED CIRCUIT
  - ⊕ SPECIAL PURPOSE (240 V, ETC.)
  - ⊕ WALL MOUNT LIGHT
  - ⊕ CEILING MOUNT LIGHT
  - ⊕ PENDANT LIGHT
  - ⊕ RECESSED CAN LIGHT
  - ⊕ FINI CAN LIGHT
  - ⊕ EYEBALL LIGHT
  - ⊕ FLUORESCENT LIGHT
  - ⊕ UNDERCABINET LIGHT
  - ⊕ FLOOD LIGHT
  - ⊕ SWITCH
  - ⊕ 3-WAY SWITCH
  - ⊕ 4-WAY SWITCH
  - ⊕ DIMMER SWITCH
  - ⊕ TELEPHONE
  - ⊕ TV CONNECTION
  - ⊕ CONDUIT FOR COMPONENT WIRING
  - ⊕ SPEAKER
  - ⊕ DOORBELL CHIME
  - ⊕ 120 V SMOKE DETECTOR
  - ⊕ EXHAUST FAN
  - ⊕ LOW VOLTAGE PANEL
- ⊕ CEILING FAN
- ⊕ CEILING FAN W/ LIGHT



H&H HOMES, INC.  
TOPSAIL DRIVE RIGHT

DATE: OCTOBER 18, 2017  
REV:  
SCALE: 1/4" = 1'-0"  
DRAWN BY: WG  
ENGINEERED BY: WLF  
REVIEWED BY: JES

SECOND FLOOR  
ELECTRICAL  
PLAN  
E-2

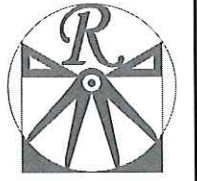


**130-MPH WIND ZONE NOTES FOR LESS THAN 30' MEAN ROOF HEIGHT:**

- 1) ENGINEER'S SEAL APPLIES ONLY TO STRUCTURAL COMPONENTS. ENGINEER'S SEAL DOES NOT CERTIFY DIMENSIONAL ACCURACY OR ARCHITECTURAL LAYOUT INCLUDING ROOF SYSTEM.
- 2) STRUCTURAL DESIGN PER NORTH CAROLINA RESIDENTIAL CODE, 2003 EDITION WITH SPECIAL CONSIDERATION TO CHAPTER 45 ("HIGH WIND ZONES" FOR 100 MPH WINDS).
- 3) BUILDER IS TO PROVIDE FRAYING CONNECTIONS AS REQUIRED BY CHAPTER 45 ("HIGH WIND ZONES" FOR 100 MPH WINDS) OF THE NORTH CAROLINA RESIDENTIAL CODE, 2003 EDITION.
- 4) FOUNDATION ANCHORAGE TO COMPLY WITH SECTION 4504 OF THE NORTH CAROLINA RESIDENTIAL CODE, 2003 EDITION.
- 5) MEAN ROOF HEIGHT IS LESS THAN 30 FEET.
- 6) WALL CLADDING DESIGNED FOR 40.1 PSF (POSITIVE AND NEGATIVE).
- 7) ROOF CLADDING DESIGNED FOR 35.6 PSF (POSITIVE AND NEGATIVE) FOR ROOF PITCHES 1/2 TO 2/3 AND 34.8 PSF (POSITIVE AND NEGATIVE) FOR ROOF PITCHES 2/3 TO 1/2.
- 8) 1/4" OSB SHEATHING IS REQUIRED ON ALL EXTERIOR WALLS.
- 9) WALLS TO BE BRACED IN ACCORDANCE WITH SECTION R6-02.03 OF THE NORTH CAROLINA RESIDENTIAL CODE, 2003 EDITION.
- 10) ENERGY EFFICIENT CEILING AND INSULATION VALUES OF THE BUILDING TO BE IN ACCORDANCE WITH CHAPTER 8 OF THE NRC, 2003 EDITION.

**100-MPH WIND ZONE NOTES FOR LESS THAN 30' MEAN ROOF HEIGHT:**

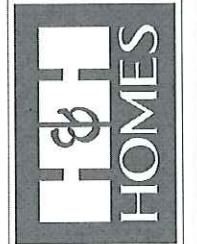
- 1) ENGINEER'S SEAL APPLIES ONLY TO STRUCTURAL COMPONENTS. ENGINEER'S SEAL DOES NOT CERTIFY DIMENSIONAL ACCURACY OR ARCHITECTURAL LAYOUT INCLUDING ROOF SYSTEM.
- 2) STRUCTURAL DESIGN PER NORTH CAROLINA RESIDENTIAL CODE, 2003 EDITION.
- 3) INSTALL 1/2" ANCHOR BOLTS 6'-0" O.C. AND WITHIN 1'-0" FROM END OF EACH PLATE. ANCHOR BOLTS MUST EXTEND A MINIMUM OF 1" INTO MASONRY OR CONCRETE.
- 4) MEAN ROOF HEIGHT IS LESS THAN 30 FEET.
- 5) EXTERIOR WALLS DESIGNED FOR 100 MPH WINDS.
- 6) WALL CLADDING DESIGNED FOR 24.1 PSF (POSITIVE AND NEGATIVE).
- 7) ROOF CLADDING DESIGNED FOR 31.6 PSF (POSITIVE AND NEGATIVE) FOR ROOF PITCHES 1/2 TO 2/3 AND 34.8 PSF (POSITIVE AND NEGATIVE) FOR ROOF PITCHES 2/3 TO 1/2.
- 8) INSTALL 1/4" OSB SHEATHING ON ALL EXTERIOR WALLS OF ALL STORES N.
- 9) ACCORDANCE WITH SECTION R6-02.03 OF THE NRC, 2003 EDITION. SEE THE WALL BRACING NOTES AND DETAILS SHEET FOR MORE INFORMATION.
- 10) ENERGY EFFICIENT COMPLIANCE AND INSULATION VALUES OF THE BUILDING TO BE IN ACCORDANCE WITH CHAPTER 8 OF THE NRC, 2003 EDITION.
- 11) REFER TO NOTES AND DETAIL SHEETS FOR ADDITIONAL STRUCTURAL INFORMATION.



**RENAISSANCE**  
RESIDENTIAL DESIGN, INC.  
4810 GLENMIST CT., 1 RALEIGH, NC 27612  
(919) 649-4128  
WWW.RENDESIGN.COM

The art of transforming your vision into reality.  
RENAISSANCE RESIDENTIAL DESIGN, INC. HEREBY EXPRESSLY RESERVES ITS COMMON LAW COPYRIGHT AND OTHER PROPERTY RIGHTS IN THESE PLANS. THESE PLANS AND DRAWINGS ARE NOT TO BE REPRODUCED, COPIED, OR COPIED IN ANY FORM OR MANNER WITHOUT FIRST OBTAINING THE EXPRESS WRITTEN CONSENT OF RENAISSANCE RESIDENTIAL DESIGN, INC. NO PART OF THESE PLANS IS TO BE ASSIGNED TO ANY THIRD PARTY WITHOUT FIRST OBTAINING SAID WRITTEN PERMISSION AND CONSENT.

**J.S. THOMPSON**  
ENGINEERING, INC.  
100 WADE AVE., SUITE 104  
RALEIGH, NC 27605  
PHONE: (919) 789-9919  
FAX: (919) 789-9921  
N.C. LICENSE NO. C-1133



PRICES, PROMOTIONS, INCENTIVES, FEATURES, OPTIONS, FLOOR PLANS, ELEVATIONS, DESIGN, MATERIALS AND DIMENSIONS ARE SUBJECT TO CHANGE WITHOUT NOTICE AND MAY VARY IN ACTUAL CONSTRUCTION. ACTUAL POSITION OF HOUSE ON LOT WILL BE DETERMINED BY THE SITE PLAN AND PLOT PLAN. FLOOR PLANS AND DESIGN PLANS ARE THE PROPERTY OF H&H HOMES. ANY USE, REPRODUCTION, ADAPTATION, OR DEVIATION OF THE PLANS IS STRICTLY PROHIBITED. SEE NEW HOME SALES CONTROL PLAN FOR CURRENT DETAILS. COPYRIGHT 2017 H&H HOMES

H&H HOMES, INC.  
TOPSAIL DRIVE RIGHT

DATE: OCTOBER 18, 2017  
REV.:  
SCALE: 1/4"=1'-0"  
DRAWN BY: WG  
ENGINEERED BY: WLF  
REVIEWED BY: JES  
MONO SLAB FOUNDATION PLAN  
S-1

**BRACED WALL DESIGN NOTES:**

- BRACED WALL DESIGN PER SECTION R602.10 OF THE SIMPLIFIED WALL BRACING CRITERIA EFFECTIVE SEPTEMBER 1, 2013.
- CS-USP REFERS TO 'CONTINUOUS SHEATHING - WOOD STRUCTURAL PANELS' CONTRACTOR IS TO INSTALL 1/8" CSB ON ALL EXTERIOR WALLS ATTACHED w/ 8d NAILS SPACED 6" O.C. ALONG PANEL EDGES AND 12" O.C. IN THE FIELD.
- GB REFERS TO 'GYPSUM BOARD' CONTRACTOR IS TO INSTALL 1/2" (MIN) GYPSUM WALL BOARD WHERE NOTED ON THE PLANS. FASTEN GB WITH 1 1/4" SCREWS OR 1 5/8" NAILS SPACED 12" O.C. ALONG PANEL EDGES AND IN THE FIELD INCLUDING TOP AND BOTTOM PLATES.
- BRACED WALL DESIGN APPLIES IN WIND ZONES UP TO 10 MPH. FOR HIGH WIND ZONES, BRACE WALLS ARE TO BE CONSTRUCTED IN ACCORDANCE WITH CHAPTER 45 OF THE NCRC, 2012 EDITION.
- SEE NOTES AND DETAIL SHEETS FOR ADDITIONAL BRACED WALL INFORMATION.

**BRACED WALL DESIGN**

| RECTANGLE A                   | RECTANGLE B                    |
|-------------------------------|--------------------------------|
| <b>SIDE 1A (FRONT LOAD)</b>   | <b>SIDE 1B</b>                 |
| METHOD: CS-USP/FFGB           | METHOD: CS-USP/FF              |
| TOTAL REQUIRED LENGTH: 51'    | TOTAL REQUIRED LENGTH: 456'    |
| TOTAL PROVIDED LENGTH: 216'   | TOTAL PROVIDED LENGTH: 456'    |
| <b>SIDE 2A</b>                | <b>SIDE 2B</b>                 |
| METHOD: CS-USP                | METHOD: CS-USP                 |
| TOTAL REQUIRED LENGTH: 51'    | TOTAL REQUIRED LENGTH: 456'    |
| TOTAL PROVIDED LENGTH: 206.6' | TOTAL PROVIDED LENGTH: 12'     |
| <b>SIDE 3A (SIDE LOAD)</b>    | <b>SIDE 3B</b>                 |
| METHOD: CS-USP/FFGB           | METHOD: CS-USP                 |
| TOTAL REQUIRED LENGTH: 1155'  | TOTAL REQUIRED LENGTH: 315'    |
| TOTAL PROVIDED LENGTH: 202.2' | TOTAL PROVIDED LENGTH: 1530.8' |
| <b>SIDE 4A</b>                | <b>SIDE 4B/2A CUMULATIVE</b>   |
| METHOD: CS-USP                | METHOD: CS-USP/GB              |
| TOTAL REQUIRED LENGTH: 1155'  | TOTAL REQUIRED LENGTH: 20.14'  |
| TOTAL PROVIDED LENGTH: 35'    | TOTAL PROVIDED LENGTH: 3145'   |

**NOTE: ALL EXTERIOR WALLS AND ATTIC WALLS ARE TO BE 2 x 6 @ 16" O.C. (UNO). 2 x 4 @ 16" O.C. EXTERIOR WALLS MAY BE CONSTRUCTED IN LIEU OF 2 x 6 WALLS (UNO). ALL INTERIOR LOAD BEARING WALLS ARE TO BE 2 x 4 @ 16" O.C. (UNO) AND NON-LOAD BEARING INTERIOR WALLS ARE TO BE 2 x 4 @ 24" O.C. (UNO).**

**STRUCTURAL NOTES:**

- ALL FRAMING LUMBER TO BE #2 SFF (UNO). ALL TREATED LUMBER TO BE #1 SFF (UNO).
- ALL LOAD BEARING HEADERS TO BE (2) 2 x 6 (UNO).
- PROVIDE EXTRA JOIST UNDER WALLS PARALLEL TO FLOOR JOISTS WHERE NOTED ON THE PLAN.
- ALL BEAMS ARE TO BE SUPPORTED WITH (2) JACK STUDS EA END (UNO). WINDOW AND DOOR HEADERS TO BE SUPPORTED w/ (1) JACK STUD AND (1) KING STUD EA END (UNO).
- FOR HIGH WIND ZONES, PROVIDE (2) 2 x 6 KING STUDS EA SIDE OF EXTERIOR WINDOW AND DOOR HEADERS w/ CLEAR OPENINGS LESS THAN 6'-0" AND (3) 2 x 6 KING STUDS EA SIDE OF HEADERS w/ CLEAR OPENINGS GREATER THAN 6'-0".
- FOR HIGH WIND ZONES, ALL EXTERIOR WALLS TO BE SHEATHED WITH 1/8" OSB SHEATHING WITH JOINTS BLOCKED AND SECURED WITH 8d NAILS AT 3" O.C. ALONG EDGES AND 6" O.C. IN THE FIELD.
- FOR HIGH WIND ZONES, SECURE ALL EXTERIOR WALL SHEATHING PANELS TO DOUBLE TOP PLATES, BANDS, JOISTS, AND GIRDERS WITH (2) ROWS OF 8d NAILS STAGGERED AT 3" O.C. PANELS SHALL EXTEND 12" BEYOND CONSTRUCTION JOINTS AND SHALL OVERLAP GIRDERS AND DOUBLE SILL PLATES THEIR FULL DEPTH.
- SQUARES DENOTE POINT LOADS WHICH REQUIRE SOLID BLOCKING TO GIRDER OR FOUNDATION. ALL SQUARES TO BE (2) STUDS (UNO).
- ALL 4 x 4 POSTS SHALL BE ANCHORED TO SLABS w/ SIMPSON ABU44 POST BASES (OR EQUAL) AND 6 x 6 POSTS w/ ABU66 POST BASES (OR EQUAL) (UNO). ALL 4 x 4 AND 6 x 6 POSTS TO BE INSTALLED WITH 100 LB CAPACITY UPLIFT CONNECTORS AT TOP (UNO).
- FOR FIBERGLASS, ALUMINUM, OR COLUMN ENG. BY OTHERS, SECURE TO SLAB w/ (2) METAL ANGLES USING 2" CONC. SCREWS. FASTEN ANGLES TO COLUMNS w/ 1/4" THROUGH BOLTS w/ NUTS AND WASHERS. LOCATE ANGLES ON OPPOSITE SIDES OF COLUMN. THROUGH BOLTS MUST BE INSTALLED PRIOR TO SETTING COLUMN.
- REFER TO NOTES AND DETAIL SHEETS FOR ADDITIONAL STRUCTURAL INFORMATION.

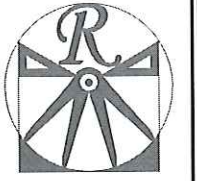
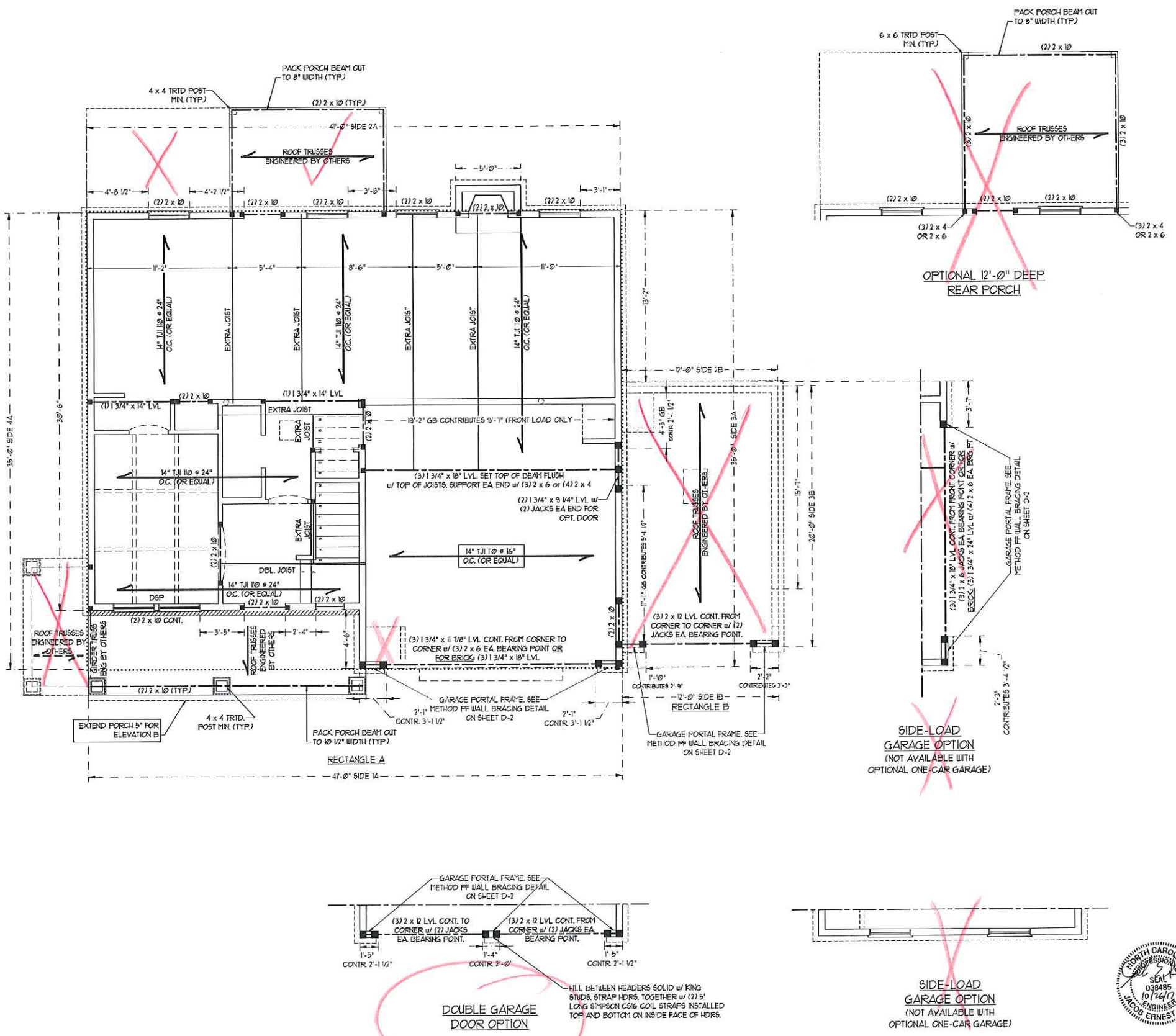
NOTE: DSP DENOTES DOUBLE STUD POCKET

**LINTEL SCHEDULE FOR BRICK/NATURAL STONE SUPPORT**

| LENGTH (FT.)  | SIZE OF LINTEL         |
|---------------|------------------------|
| UP TO 4 FT.   | L 3 1/2 x 3 1/2 x 1/4  |
| 4-8           | L 5 x 3 1/2 x 5/16 LLY |
| 8 AND GREATER | L 6 x 4 x 5/16 LLY     |

**NOTES:**

- LINTEL SCHEDULE APPLIES TO ALL OPENINGS IN BRICK VENEER (UNO). SEE ARCH. DETAILS FOR SIZE AND LOCATION OF OPENINGS.
- (LLV) - LONG LEG VERTICAL
- LENGTH + CLEAR OPENING
- EMBED ALL ANGLE IRONS MIN. 4" EACH SIDE INTO VENEER TO PROVIDE BEARING.
- FOR ALL HEADERS 8'-0" AND GREATER IN LENGTH, ATTACH STEEL ANGLE TO HEADER w/ 1/2" LAG SCREWS @ 12" O.C. STAGGERED.
- FOR ALL BRICK SUPPORT @ ROOF LINES, FASTEN A 5" x 3 1/2" x 5/16" STEEL ANGLE TO 2 x 10 BLOCKING INSTALLED BETWEEN WALL STUDS w/ 1/2" LAG SCREWS 12" O.C. STAGGERED AND IN ACCORDANCE TO SECTION R103.122 OF THE NORTH CAROLINA RESIDENTIAL CODE, 2012 EDITION.
- PRECAST REINFORCED CONCRETE LINTELS ENGINEERED BY OTHERS MAY BE USED IN LIEU OF STEEL LINTELS.



**RENAISSANCE**  
RESIDENTIAL DESIGN, INC.  
4810 GLENHIST CT., RALEIGH, NC 27612  
(919) 649-4128  
WWW.RAROCAROLINA.COM

"The art of transforming your vision into reality."

RENAISSANCE RESIDENTIAL DESIGN, INC. RESERVES THE RIGHT TO MAKE MODIFICATIONS TO FLOOR PLANS, CONSTRUCTION, MATERIALS, AND SPECIFICATIONS WITHOUT NOTICE. THESE DRAWINGS ARE FOR THE PURPOSE OF CONVEYING AN ARCHITECTURAL CONCEPT ONLY.

RENAISSANCE RESIDENTIAL DESIGN, INC. HEREBY EXPRESSLY RESERVES ITS COMMON LAW COPYRIGHT AND OTHER PROPERTY RIGHTS IN THESE PLANS. THESE PLANS AND DRAWINGS ARE NOT TO BE REPRODUCED, CHANGED, OR COPIED IN ANY FORM OR MANNER WITHOUT FIRST OBTAINING THE EXPRESS WRITTEN CONSENT OF RENAISSANCE RESIDENTIAL DESIGN, INC. NOR ARE THEY TO BE ASSIGNED TO ANY THIRD PARTY WITHOUT FIRST OBTAINING SAID WRITTEN PERMISSION AND CONSENT.

**J.S. THOMPSON**  
ENGINEERING, INC.  
606 W. WALKER AVE., SUITE 104  
RALEIGH, NC 27605  
PHONE: (919) 789-9919  
FAX: (919) 789-9921  
N.C. LICENSE NO. C-11213



PRICES, PROMOTIONS, INCENTIVES, FEATURES, OPTIONS, FLOOR PLANS, ELEVATIONS, DESIGN, MATERIALS AND FINISHES ARE SUBJECT TO CHANGE WITHOUT NOTICE AND MAY VARY IN ACTUAL CONSTRUCTION. ACTUAL POSITION OF HOUSE ON LOT WILL BE DETERMINED BY THE SITE PLAN AND PLOT PLAN. CONCEPTS, FLOOR PLANS ARE THE COPYRIGHTED PROPERTY OF H&H HOMES, INC. USE, REPRODUCTION, ADAPTATION OR DISPLAY OF ANY OF THE PLANS IS STRICTLY PROHIBITED. © H&H HOMES, INC. 2017. FOR CURRENT DETAILS, CONTACT 2017 H&H HOMES.

**H&H HOMES, INC.**  
TOPSAIL DRIVE RIGHT

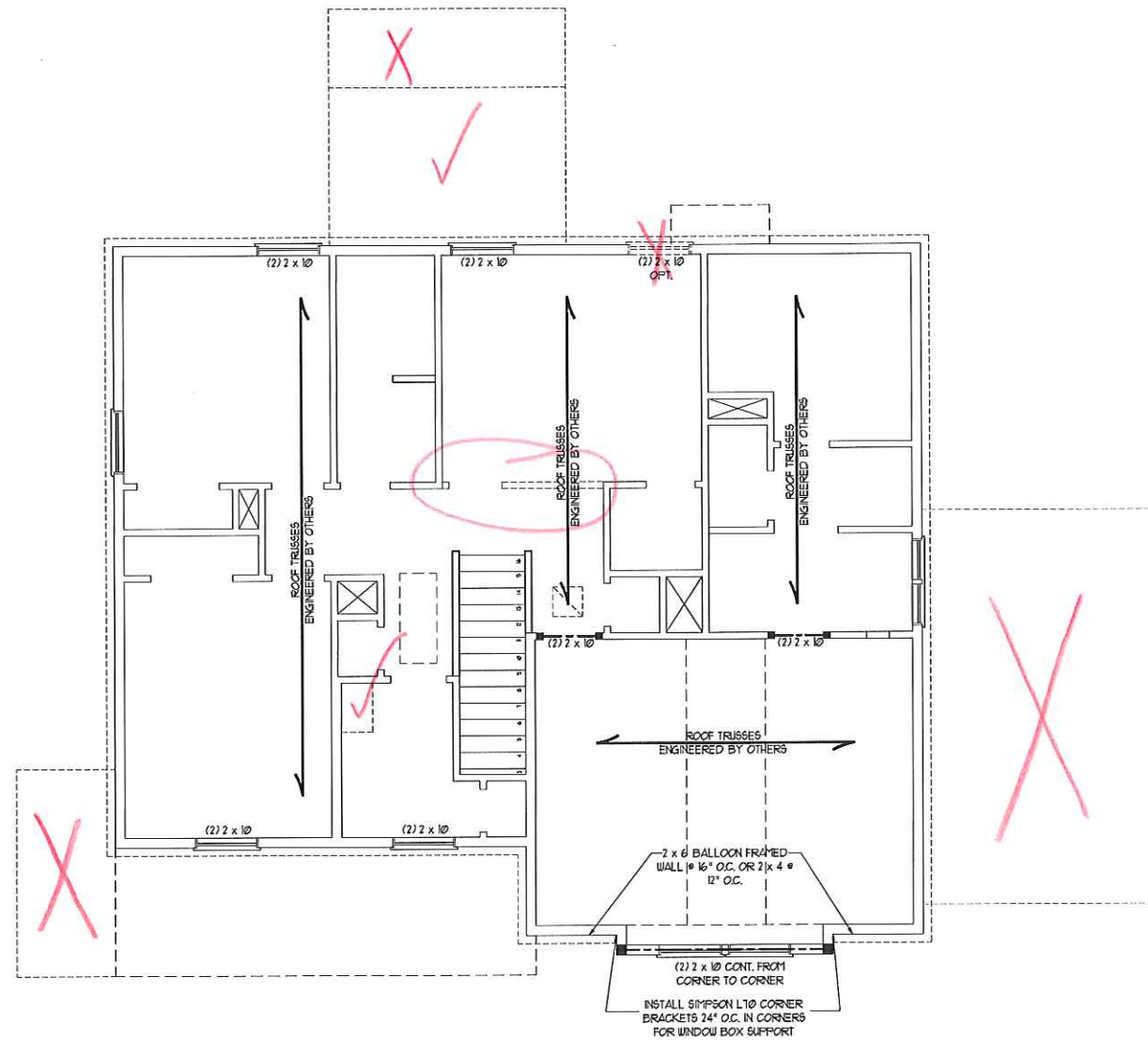
DATE: OCTOBER 18, 2017  
REV:  
SCALE: 1/4" = 1'-0"  
DRAWN BY: WG  
ENGINEERED BY: WLF  
REVIEWED BY: JES

SECOND FLOOR FRAMING PLAN  
S-2





**\*NOTE: ALL EXTERIOR WALLS AND ATTIC WALLS ARE TO BE 2 x 6 @ 16" O.C. (UNO). 2 x 4 @ 16" O.C. EXTERIOR WALLS MAY BE CONSTRUCTED IN LIEU OF 2 x 6 WALLS (UNO). ALL INTERIOR LOAD BEARING WALLS ARE TO BE 2 x 4 @ 16" O.C. (UNO) AND NON-LOAD BEARING INTERIOR WALLS ARE TO BE 2 x 4 @ 24" O.C. (UNO).**



**BRACED WALL DESIGN NOTES:**

- BRACED WALL DESIGN PER SECTION R602.10 OF THE SIMPLIFIED WALL BRACING CRITERIA EFFECTIVE SEPTEMBER 1, 2013.
- OSB-48P REFERS TO 'CONTINUOUS SHEATHING - WOOD STRUCTURAL PANELS' CONTRACTOR IS TO INSTALL 1/8" OSB ON ALL EXTERIOR WALLS ATTACHED w/ 8d NAILS SPACED 6" O.C. ALONG PANEL EDGES AND 12" O.C. IN THE FIELD.
- GB REFERS TO 'GYPSUM BOARD' CONTRACTOR IS TO INSTALL 1/2" (MIN) GYPSUM WALL BOARD WHERE NOTED ON THE PLANS. FASTEN GB WITH 1 1/4" SCREWS OR 1 5/8" NAILS SPACED 7" O.C. ALONG PANEL EDGES AND IN THE FIELD INCLUDING TOP AND BOTTOM FLATES.
- BRACED WALL DESIGN APPLIES IN WIND ZONES UP TO 10 MPH. FOR HIGH WIND ZONES, BRACE WALLS ARE TO BE CONSTRUCTED IN ACCORDANCE WITH CHAPTER 45 OF THE NRC, 2012 EDITION. SEE NOTES AND DETAIL SHEETS FOR ADDITIONAL BRACED WALL INFORMATION.

**NOTE:**

- PER SECTION R602.10.32 OF THE 2012 NRC, 2012 EDITION THE AMOUNT OF BRACING ON THE SECOND FLOOR EXCEEDS THE AMOUNT REQUIRED FOR THE FIRST FLOOR AND NO BRACED WALL ANALYSIS IS REQUIRED.
- SEATH ALL EXTERIOR WALLS WITH 1/8" OSB SHEATHING ATTACHED WITH 8d NAILS AT 6" O.C. ALONG PANEL EDGES AND 12" O.C. IN THE FIELD.

**LINTEL SCHEDULE FOR BRICK/NATURAL STONE SUPPORT**

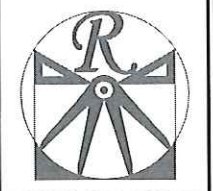
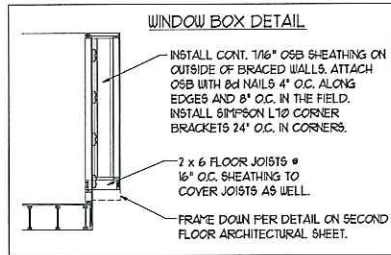
| LENGTH (FT.)  | SIZE OF LINTEL         |
|---------------|------------------------|
| UP TO 4 FT.   | L 3 1/2 x 3 1/2 x 1/4  |
| 4-8           | L 5 x 3 1/2 x 5/16 LLY |
| 8 AND GREATER | L 6 x 4 x 5/16 LLY     |

**NOTES:**

- LINTEL SCHEDULE APPLIES TO ALL OPENINGS IN BRICK VENEER (UNO). SEE ARCH DWGS. FOR SIZE AND LOCATION OF OPENINGS.
- (LLV) = LONG LEG VERTICAL
- LENGTH = CLEAR OPENING
- EMBED ALL ANGLE IRONS MIN 4" EACH SIDE INTO VENEER TO PROVIDE BEARING.
- FOR ALL HEADERS 8'-0" AND GREATER IN LENGTH ATTACH STEEL ANGLE TO HEADER W/ 1/2" LAG SCREWS @ 12" O.C. STAGGERED.
- FOR ALL BRICK SUPPORT @ ROOF LINES, FASTEN A 5" x 3 1/2" x 5/16" STEEL ANGLE TO 2 x 10 BLOCKING INSTALLED BETWEEN WALL STUDS W/ 1/2" LAG SCREWS 12" O.C. STAGGERED AND IN ACCORDANCE TO SECTION R103.1.22 OF THE NORTH CAROLINA RESIDENTIAL CODE, 2012 EDITION.
- PRECAST REINFORCED CONCRETE LINTELS ENGINEERED BY OTHERS MAY BE USED IN LIEU OF STEEL LINTELS.

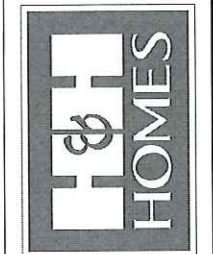
**STRUCTURAL NOTES:**

- ALL FRAMING LUMBER TO BE #2 SFF (UNO).
- ALL LOAD BEARING HEADERS TO BE (2) 2 x 6 (UNO).
- ALL BEAMS ARE TO BE SUPPORTED WITH (2) JACK STUDS EA. END (UNO). WINDOW AND DOOR HEADERS TO BE SUPPORTED w/ (1) JACK STUD AND (1) KING STUD EA. END (UNO).
- FOR HIGH WIND ZONES, PROVIDE (2) 2 x 6 KING STUDS EA. SIDE OF EXTERIOR WINDOW AND DOOR HEADERS w/ CLEAR OPENINGS LESS THAN 6'-0" AND (3) 2 x 6 KING STUDS EA. SIDE OF HEADERS w/ CLEAR OPENINGS GREATER THAN 6'-0".
- SQUARES DENOTE POINT LOADS WHICH REQUIRE SOLID BLOCKING TO GIRDER OR FOUNDATION.
- REFER TO NOTES AND DETAIL SHEETS FOR ADDITIONAL STRUCTURAL INFORMATION.



**RENAISSANCE**  
RESIDENTIAL DESIGN, INC.  
4810 GLENVIEW CT., J. RALEIGH, NC 27612  
(919) 649-4128  
WWW.RENAISSANCEDESIGN.COM  
"The art of transforming your vision into reality."  
RENAISSANCE RESIDENTIAL DESIGN, INC. RESERVES THE RIGHT TO MAKE MODIFICATIONS TO FLOOR PLANS, CONSTRUCTION MATERIALS, AND SPECIFICATIONS WITHOUT NOTICE. THESE DRAWINGS ARE FOR THE PURPOSE OF CONVEYING AN ARCHITECTURAL CONCEPT ONLY.  
RENAISSANCE RESIDENTIAL DESIGN, INC. HEREBY EXPRESSLY RESERVES ITS COMMON LAW COPYRIGHT AND OTHER PROPERTY RIGHTS IN THESE PLANS. THESE PLANS AND DRAWINGS ARE NOT TO BE REPRODUCED, COPIED OR COPIED IN ANY FORM OR MANNER WITHOUT FIRST OBTAINING THE WRITTEN CONSENT OF RENAISSANCE RESIDENTIAL DESIGN, INC. IF YOU ARE TO BE ASSIGNED TO ANY THIRD PARTY WITHOUT FIRST OBTAINING THE WRITTEN PERMISSION AND CONSENT.

**J.S. THOMPSON**  
ENGINEERING, INC.  
600 WADE AVE., SUITE 104  
RALEIGH, NC 27605  
PHONE: (919) 789-9119  
FAX: (919) 789-9221  
N.C. LICENSE NO. C-1713



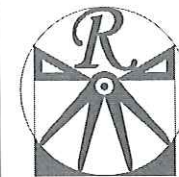
PERMISSIONS, INCENTIVES, FEATURES, OPTIONS, FLOOR PLANS, ELEVATIONS, DESIGN, MATERIALS AND FINISHES ARE SUBJECT TO CHANGE AND DIMENSIONS ARE ESTIMATED AND MAY VARY IN ACTUAL CONSTRUCTION. ACTUAL POSITION OF HOUSE ON LOT WILL BE DETERMINED BY THE SITE PLAN AND LOT PLAN. THESE DRAWINGS ARE THE PROPERTY OF H&H HOMES. ANY USE, REPRODUCTION, ADAPTATION OR HIGHLY OF THESE PLANS IS STRICTLY PROHIBITED. PRELIMINARY DETAILS. COPYRIGHT 2011 H&H HOMES.

**H&H HOMES, INC.**  
TOPSAIL DRIVE RIGHT

DATE: OCTOBER 18, 2017  
REV:  
SCALE: 1/4"=1'-0"  
DRAWN BY: WG  
ENGINEERED BY: WLF  
REVIEWED BY: JES

ATTIC FLOOR  
FRAMING PLAN  
S-3

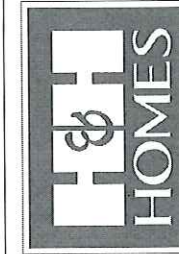




**RENAISSANCE**  
RESIDENTIAL DESIGN, INC.  
4810 GLENVIEW CT., 1 RALEIGH, NC 27612  
(919) 649-4128  
WWW.RRDCAROLINA.COM  
"The art of transforming your vision into reality."

RENAISSANCE RESIDENTIAL DESIGN, INC. HEREBY EXPRESSLY RESERVES ITS COMMON LAW COPYRIGHT AND OTHER PROPERTY RIGHTS IN THESE PLANS. THESE PLANS AND DRAWINGS ARE NOT TO BE REPRODUCED, CHANGED, OR COPIED IN ANY FORM OR MANNER WITHOUT FIRST OBTAINING THE EXPRESS WRITTEN CONSENT OF RENAISSANCE RESIDENTIAL DESIGN, INC. IF YOU ARE THEY TO BE ASSIGNED TO ANY THIRD PARTY WITHOUT FIRST OBTAINING SAID WRITTEN PERMISSION AND CONSENT.

**J.S. THOMPSON**  
**ENGINEERING, INC.**  
606 WADE AVE., SUITE 104  
RALEIGH, NC 27655  
PHONE: (919) 789-9919  
FAX: (919) 789-9921  
N.C. LICENSE NO. C1733



PLEASE PROMPTLY INVENTIVE FEATURES, OPTIONS, FLOOR PLANS, ELEVATIONS, DESIGNS, MATERIALS AND DIMENSIONS ARE SUBJECT TO CHANGE WITHOUT NOTICE AND MAY VARY IN ACTUAL CONSTRUCTION. ACTUAL POSITION OF HOUSE ON LOT WILL BE DETERMINED BY THE SITE PLAN AND FLOT PLAN. CONCEPTS IN FLOOR PLANS ARE THE COPYRIGHTED PROPERTY OF H&H HOMES. ANY USE, REPRODUCTION, ADAPTATION OR DISPLAY OF THE PLANS IS STRICTLY PROHIBITED. SEE PLAN COPYRIGHT © H&H HOMES

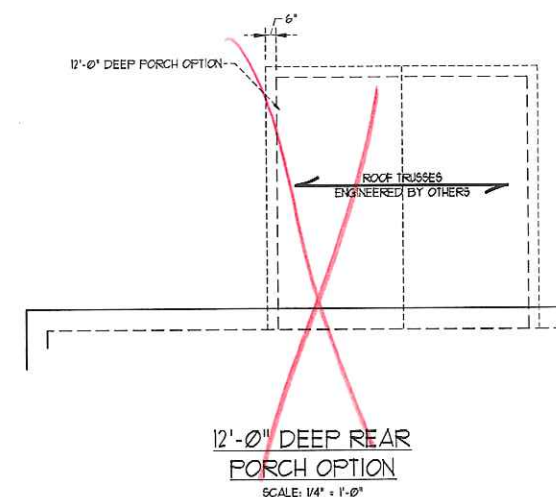
H&H HOMES, INC.  
TOPSAIL DRIVE RIGHT

DATE: OCTOBER 18, 2017  
REV.:  
SCALE: 1/4" = 1'-0"  
DRAWN BY: WG  
ENGINEERED BY: WLF  
REVIEWED BY: JES

ROOF PLAN  
ELEVATION - A  
**S-4**



**ATTIC VENT CALCULATION:**  
163 SQ. FT. OF ATTIC DIVIDED BY 150 REQUIRES 1.1 SQ. FT. OF NET FREE VENTILATING AREA (MIN.)



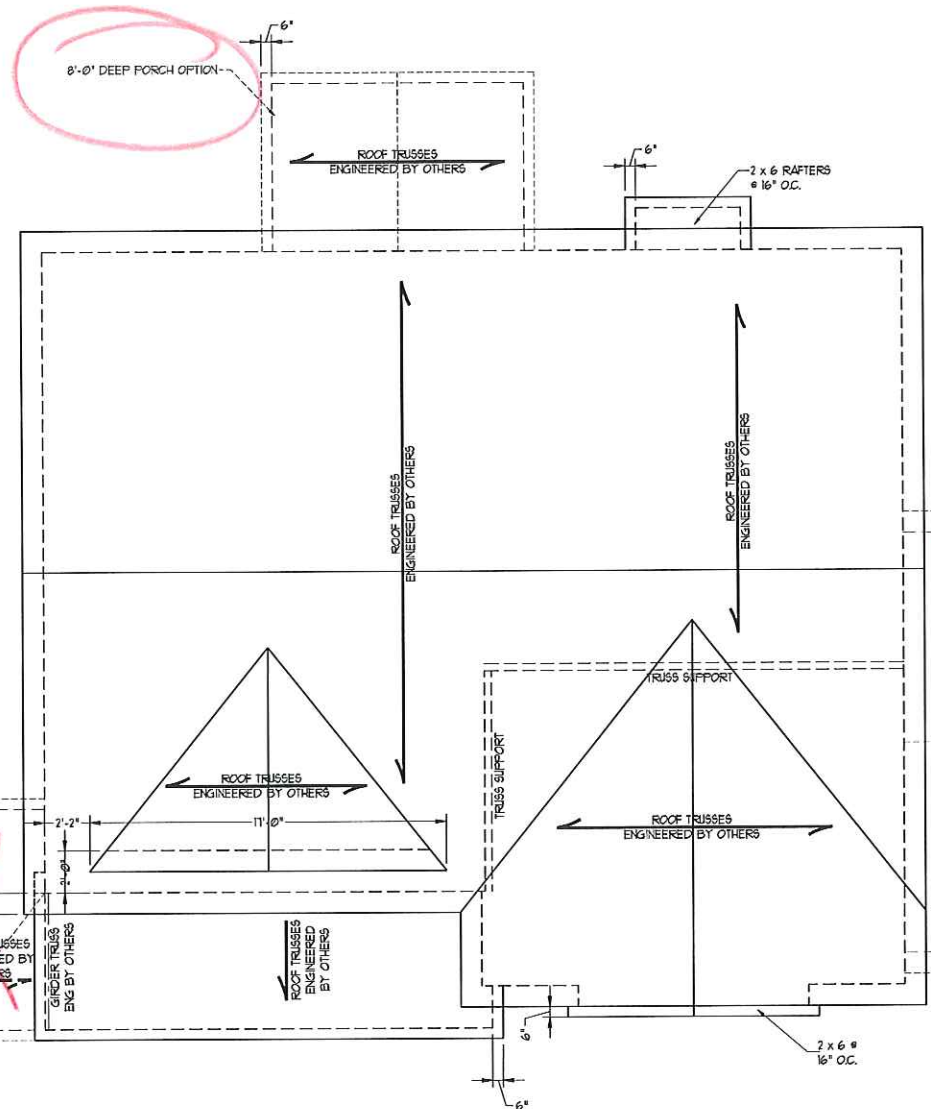
**ATTIC VENT CALCULATION:**  
1630 SQ. FT. OF ATTIC DIVIDED BY 150 REQUIRES 10.9 SQ. FT. OF NET FREE VENTILATING AREA (MIN.)

- STRUCTURAL NOTES:**
1. ALL FRAMING LUMBER TO BE #2 SFF (INO).
  2. CIRCLES DENOTE (3) 2 x 4 POSTS FOR ROOF SUPPORT.
  3. FRAME DORTER WALLS ON TOP OF DOUBLE OR TRIPLE RAFTERS.
  4. HIP SPLICES ARE TO BE SPACED A MIN. OF 8'-0". FASTEN MEMBERS WITH THREE ROUS OF 10d NAILS @ 16" O.C. (TYP).
  5. STICK FRAME OVER-FRAMED ROOF SECTIONS W/ 2 x 8 RIDGES, 2 x 6 RAFTERS @ 16" O.C. AND FLAT 2 x 10 VALLEYS OR USE VALLEY TRUSSES.
  6. FASTEN FLAT VALLEYS TO RAFTERS OR TRUSSES WITH SIMPSON H25A HURRICANE TIES @ 32" O.C. MAX. PASS HURRICANE TIES THROUGH NOTCH IN ROOF SHEATHING. EACH RAFTER IS TO BE FASTENED TO THE FLAT VALLEY WITH A MIN. OF (6) 10d TOE NAILS.
1. REFER TO NOTES AND DETAIL SHEETS FOR ADDITIONAL STRUCTURAL INFORMATION.

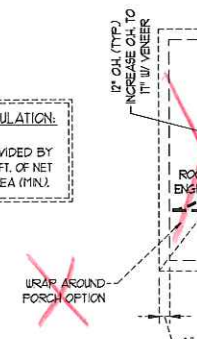
**ATTIC VENT CALCULATION:**  
286 SQ. FT. OF ATTIC DIVIDED BY 150 REQUIRES 19.1 SQ. FT. OF NET FREE VENTILATING AREA (MIN.)

**GARAGE OPTION**

**ATTIC VENT CALCULATION:**  
111 SQ. FT. OF ATTIC DIVIDED BY 150 REQUIRES 0.74 SQ. FT. OF NET FREE VENTILATING AREA (MIN.)



**ATTIC VENT CALCULATION:**  
63 SQ. FT. OF ATTIC DIVIDED BY 150 REQUIRES 0.4 SQ. FT. OF NET FREE VENTILATING AREA (MIN.)

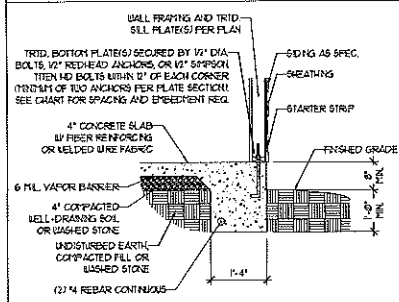


ELEVATION A

- BRICK SUPPORT NOTE:**
1. FOR BRICK SUPPORT @ ROOF LINES, BOLT A 5" x 3 1/2" x 5/16" STEEL ANGLE TO 2 x 10 BLOCKING INSTALLED BETWEEN WALL STUDS W/ 1/2" LAG SCREWS 12" O.C. STAGGERED AND IN ACCORDANCE WITH SECTION R103.122 OF THE NORTH CAROLINA RESIDENTIAL CODE, 2012 EDITION.
  2. WHERE ROOF SLOPES EXCEED 1:12, INSTALL 3" x 3" x 1/4" STEEL PLATE STOPS AT 24" O.C. PER SECTION R103.121 OF THE NORTH CAROLINA RESIDENTIAL CODE, 2012 EDITION.

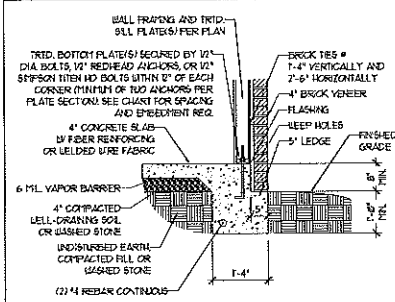
### MONOLITHIC SLAB DETAILS

DETAIL 1



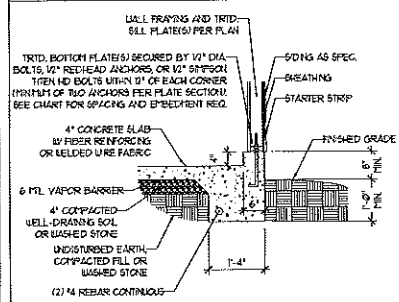
TYPICAL SLAB DETAIL

DETAIL 2



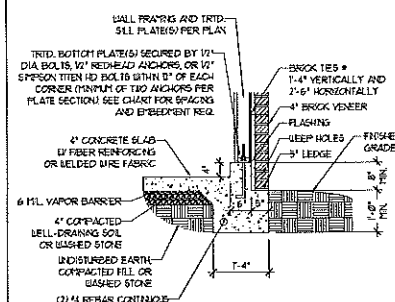
BRICK VENEER DETAIL

DETAIL 3



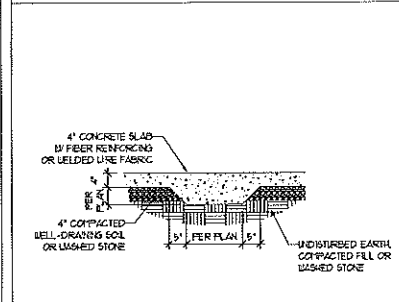
GARAGE CURB DETAIL

DETAIL 4



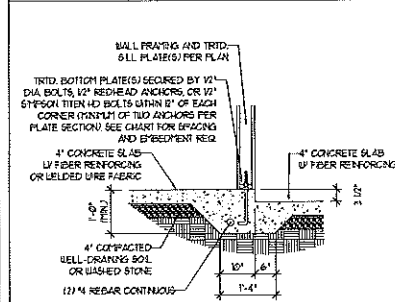
GARAGE CURB BRICK LEDGE DETAIL

DETAIL 5



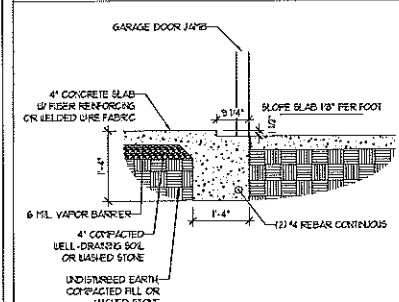
THICKENED SLAB DETAIL

DETAIL 6



STEP IN GARAGE DETAIL

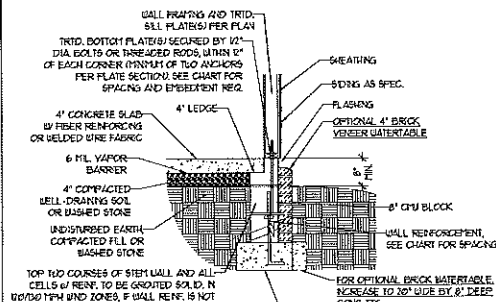
DETAIL 7



SLAB AT GARAGE DOOR DETAIL

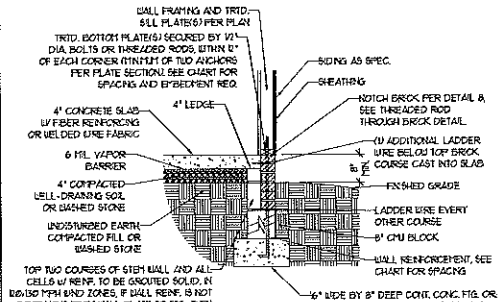
### STEM WALL DETAILS

DETAIL 1



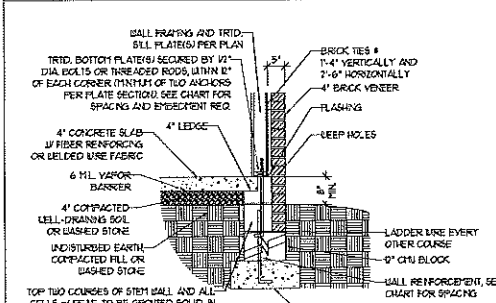
TYPICAL STEM WALL DETAIL (w/ OPTIONAL WATERTABLE)

OPTIONAL DETAIL 1



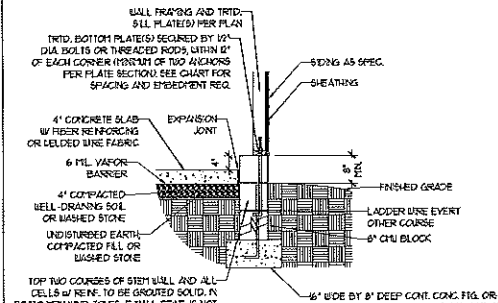
OPTIONAL STEM WALL DETAIL

DETAIL 2



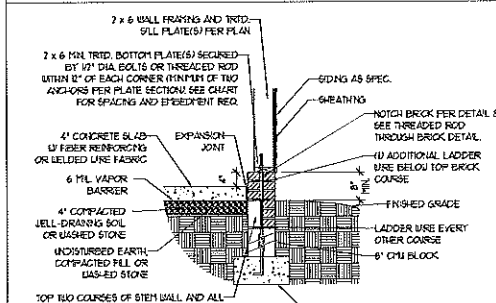
TYPICAL STEM WALL FND. w/ BRICK DETAIL

DETAIL 3



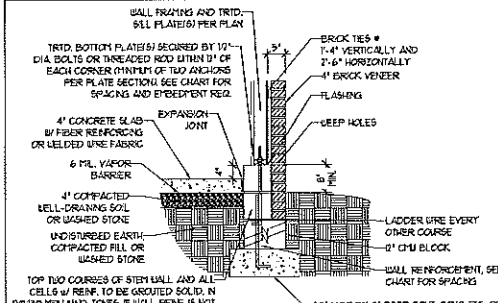
TYPICAL STEM WALL FND. DETAIL w/ CURB @ GARAGE

OPTIONAL DETAIL 3



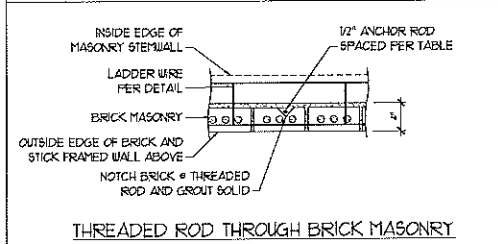
OPTIONAL STEM WALL FND. DETAIL w/ CURB @ GARAGE

DETAIL 4



TYPICAL STEM WALL FND. DETAIL w/ BRICK AND CURB @ GARAGE

DETAIL 8



### MASONRY STEM WALL SPECIFICATIONS

| WALL HEIGHT (FEET) | MASONRY WALL TYPE                          |                                    |                                    |                                    |
|--------------------|--|------------------------------------|------------------------------------|------------------------------------|
|                    | 8" CMU                                     | 4" BRICK AND 4" CMU                | 4" BRICK AND 8" CMU                | 12" CMU                            |
| 2 AND BELOW        | UNGROUTED                                  | GROUT SOLID                        | UNGROUTED                          | UNGROUTED                          |
| 3                  | UNGROUTED                                  | GROUT SOLID                        | UNGROUTED                          | UNGROUTED                          |
| 4                  | GROUT SOLID                                | GROUT SOLID w/ 4" REBAR @ 48" O.C. | GROUT SOLID                        | GROUT SOLID w/ 4" REBAR @ 64" O.C. |
| 5                  | GROUT SOLID w/ 4" REBAR @ 36" O.C.         | NOT APPLICABLE                     | GROUT SOLID w/ 4" REBAR @ 36" O.C. | GROUT SOLID w/ 4" REBAR @ 64" O.C. |
| 6                  | GROUT SOLID w/ 4" REBAR @ 24" O.C.         | NOT APPLICABLE                     | GROUT SOLID w/ 4" REBAR @ 24" O.C. | GROUT SOLID w/ 4" REBAR @ 64" O.C. |
| 1 AND GREATER      | ENGINEERED DESIGN BASED ON SITE CONDITIONS |                                    |                                    |                                    |

### STRUCTURAL NOTES:

- WALL HEIGHT MEASURED FROM TOP OF FOOTING TO TOP OF THE WALL.
- THE MULTIPLE WYTHES TOGETHER WITH LADDER WIRE AT 16" O.C. VERTICALLY.
- CHART APPLICABLE FOR HOUSE FOUNDATION ONLY. CONSULT ENGINEER FOR DESIGN OF GARAGE FOUNDATION NOT COMMON TO HOUSE.
- BACKFILL OF CLEAN #1 / #61 WASHED STONE IS ALLOWABLE.
- BACKFILL OF WELL DRAINED OR SAND - GRAVEL MIXTURE SOILS (45 PFG-FT BELOW GRADE) CLASSIFIED AS GROUP 1 ACCORDING TO UNIFIED SOILS CLASSIFICATION SYSTEM IN ACCORDANCE WITH TABLE 3402.1 OF THE 2012 INTERNATIONAL RESIDENTIAL CODE ARE ALLOWABLE.
- FREP SLAB PER 806.21 AND 806.22 BASE OF THE 2012 INTERNATIONAL RESIDENTIAL CODE. MINIMUM 24" LAP SPlice LENGTH.
- LOCATE REBAR IN CENTER OF FOUNDATION WALL.
- WHERE REQUIRED, FILL BLOCK SOLID WITH TYPE "S" MORTAR OR 3000 PSI GROUT. USE OF "LOW LIFT GROUTING" METHOD REQUIRED WHEN FILLING WALLS WITH GROUT AT HEIGHTS OF 5' AND GREATER.

### ANCHOR SPACING AND EMBEDMENT

| WIND ZONE | 100 MPH  |           | 110 MPH  |                                     |
|-----------|--|-----------|--|-------------------------------------|
|           | SPACING  | EMBEDMENT | SPACING  | EMBEDMENT                           |
| 100 MPH   | 6'-0" O.C.<br>3'-0" O.C. FOR STRAPS  | 1"        | 4'-0" O.C.<br>2'-0" O.C. FOR STRAPS  | 5" INTO MASONRY<br>1" INTO CONCRETE |
| 120 MPH   | 6'-0" O.C. w/ DBL. SILL PLATE OR 4'-0" O.C. w/ SINGLE SILL PLATE w/ 2" x 2" x 1/8" WASHERS | 1"        | 6'-0" O.C. w/ DBL. SILL PLATE OR 4'-0" O.C. w/ SINGLE SILL PLATE w/ 2" x 2" x 1/8" WASHERS | 5" INTO MASONRY<br>1" INTO CONCRETE |
| 130 MPH   | 6'-0" O.C. w/ DBL. SILL PLATE OR 4'-0" O.C. w/ SINGLE SILL PLATE w/ 2" x 2" x 1/8" WASHERS | 1"        | 6'-0" O.C. w/ DBL. SILL PLATE OR 4'-0" O.C. w/ SINGLE SILL PLATE w/ 2" x 2" x 1/8" WASHERS | 5" INTO MASONRY<br>1" INTO CONCRETE |

NOTE: HORIZONTAL FOOTING REBAR REQUIRED IN HIGH WIND ZONES ONLY (120 MPH - 130 MPH)

**J.S. THOMPSON ENGINEERING, INC.**  
606 WADE AVE., SUITE 104 RALEIGH, NC 27605  
PHONE: (919) 789-9919 FAX: (919) 789-9921  
N.C. LICENSE NO. C-11731

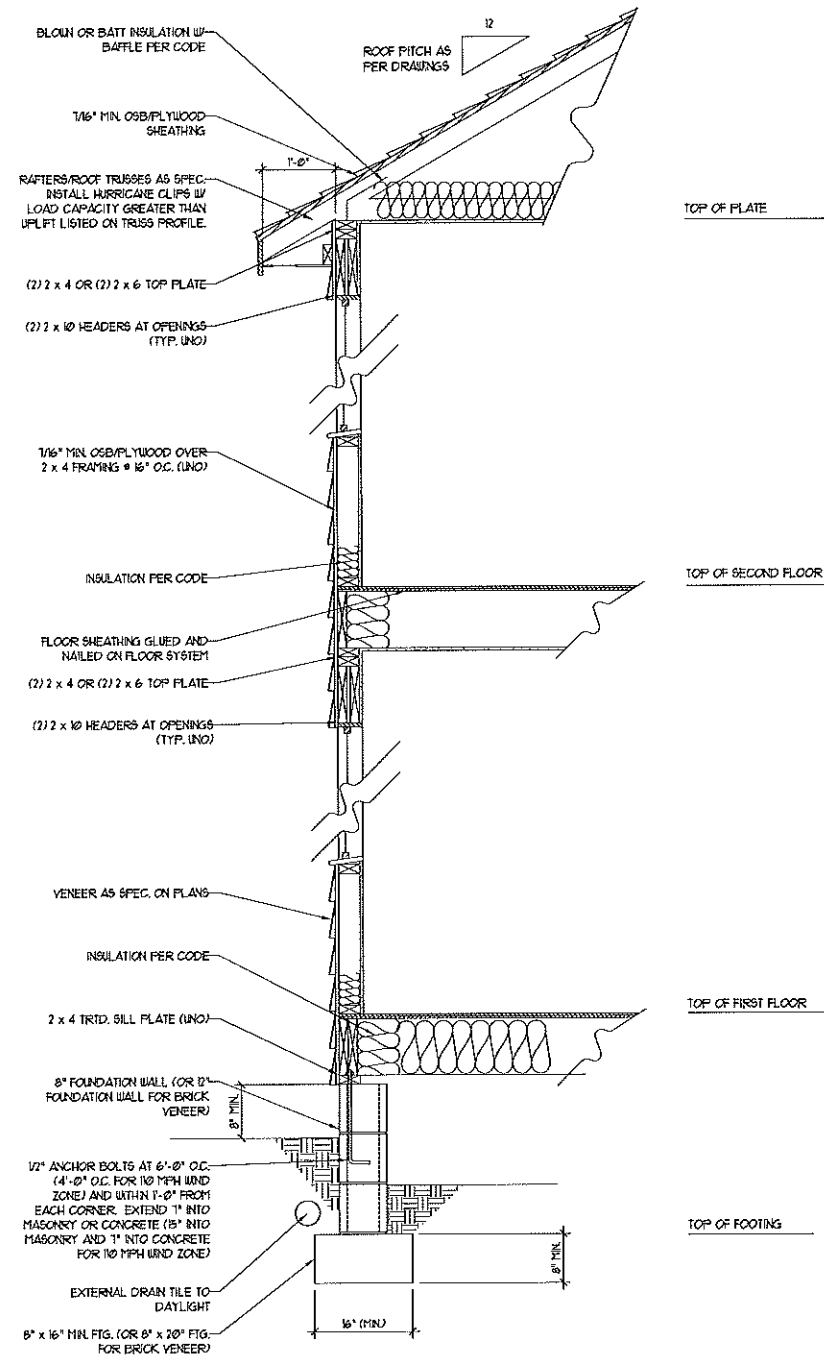
FOUNDATION DETAILS

DATE: AUGUST 14, 2019  
SCALE: NTS  
DRAWN BY: JST  
ENGINEERED BY: JES



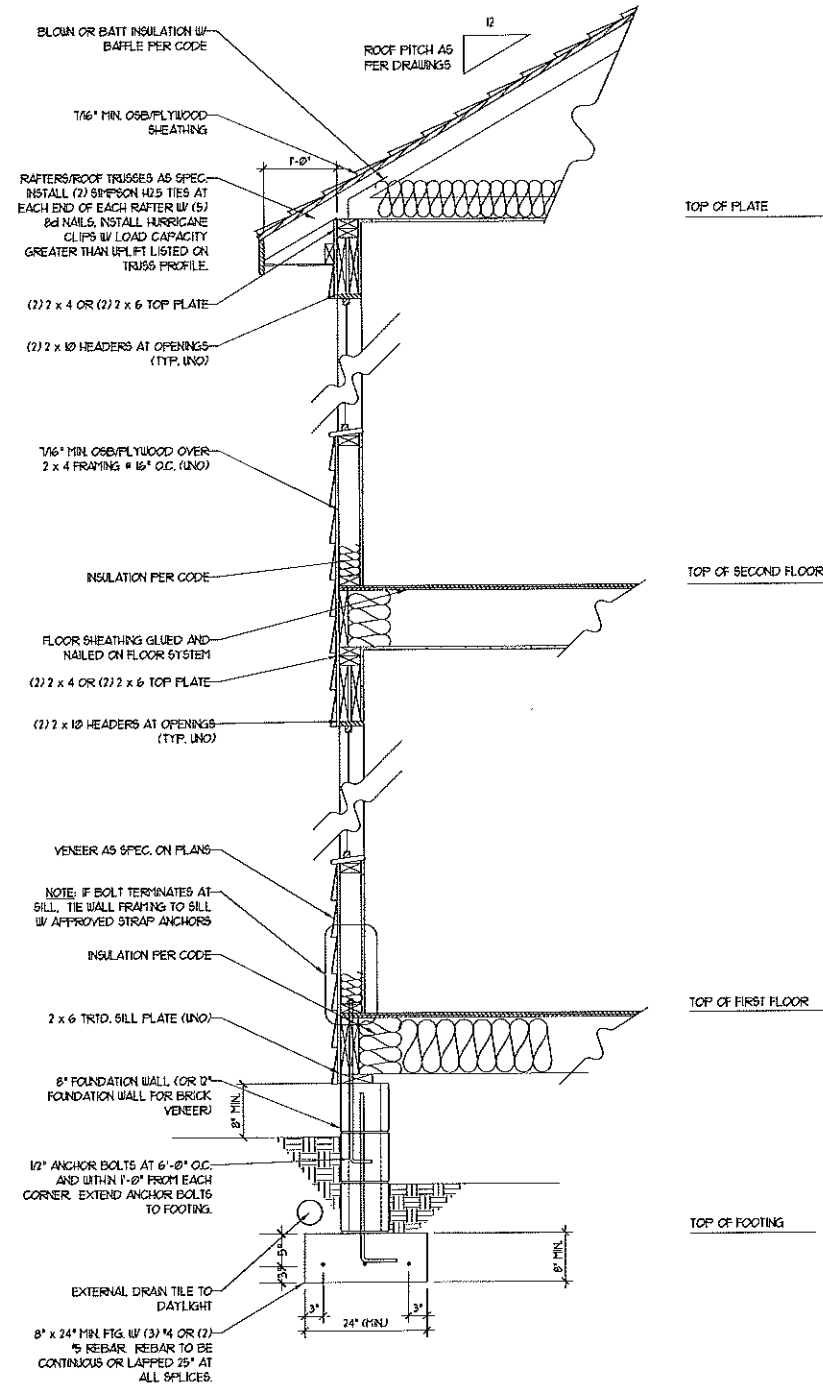
FOUNDATION DETAILS  
D-1

# 100/110 MPH WIND ZONE



WALL SECTION W/ CRAWL SPACE  
W/ STD. SIDING SHOWN (NTS)

# 120/130 MPH WIND ZONE



WALL SECTION W/ CRAWL SPACE  
W/ STD. SIDING SHOWN (NTS)

**NOTE:**  
- BUILDER IS TO PROVIDE FRAMING CONNECTIONS AS REQUIRED BY CHAPTER 45 ("HIGH WIND ZONES" FOR 100/110/130 MPH WINDS) AND CHAPTER 46 (COASTAL AND FLOOD PLAIN CONSTRUCTION STANDARDS) OF THE NORTH CAROLINA STATE BUILDING CODE, 2012 EDITION.



**J.S. THOMPSON  
ENGINEERING, INC.**  
606 WADE AVE., SUITE 104 RALEIGH, NC 27665  
PHONE: (919) 789-9919 FAX: (919) 789-9921  
N.C. LICENSE NO.: C-1731

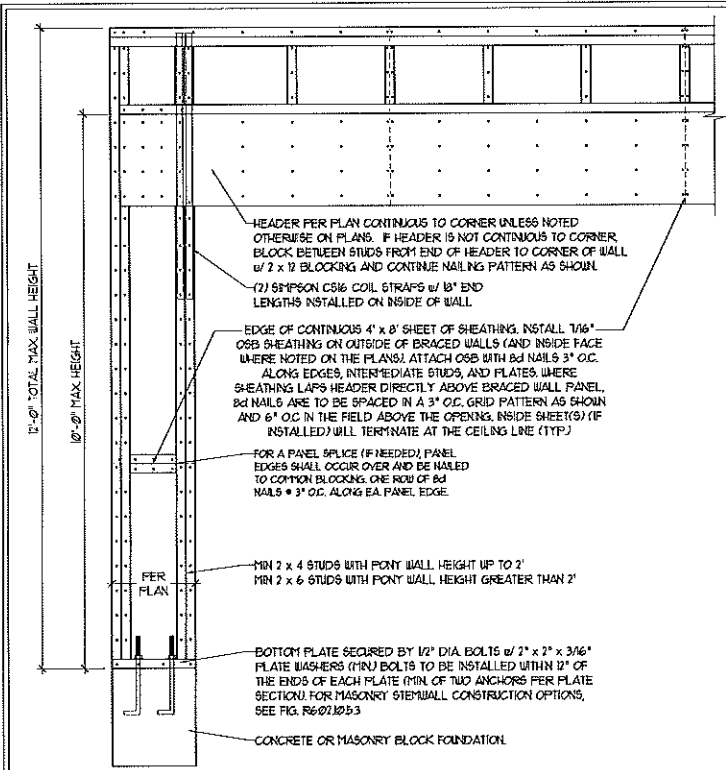
DETAILS

|                     |
|---------------------|
| DATE: JULY 12, 2012 |
| SCALE: NTS          |
| DRAWN BY: JST       |
| ENGINEERED BY: JST  |
| REVIEWED BY: MUS    |

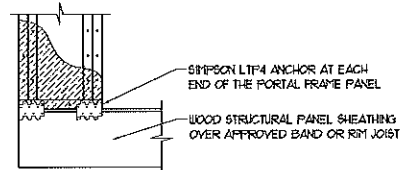
TYPICAL WALL SECTION

**GENERAL WALL BRACING NOTES:**

1. WALL BRACING DESIGNED IN ACCORDANCE WITH CHAPTER 6 OF THE 2012 NC RESIDENTIAL BUILDING CODE (NRC). TABLES AND FIGURES REFERENCED ARE FROM THE 2012 NRC.
2. SEE THIS SHEET FOR GENERAL DETAILS. REFER TO THE 2012 NRC FOR ADDITIONAL INFORMATION AS NEEDED.
3. SEE STRUCTURAL SHEETS FOR BRACED WALL LOCATIONS, DIMENSIONS, HOLD DOWN TYPE AND LOCATIONS, BRACED WALL LINE KEY WITH WALL DESIGN SUMMARY OF REQUIRED/PROVIDED TOTALS FOR EACH WALL LINE AND ANY SPECIAL NOTES OR REQUIREMENTS.
4. ALL EXTERIOR WALLS ARE TO BE SHEATHED WITH CS-USP IN ACCORDANCE WITH SECTION R602.10.3 UNLESS NOTED OTHERWISE.
5. ALL EXTERIOR AND INTERIOR WALLS TO HAVE 1/2" GYPSUM INSTALLED. WHEN NOT USING METHOD 'GB', GYPSUM TO BE FASTENED PER TABLE R102.3.5. METHOD GB TO BE FASTENED PER TABLE R602.10.1.
6. CS-USP REFERS TO THE "CONTINUOUS SHEATHING - WOOD STRUCTURAL PANELS" WALL BRACING METHOD. 1/16" OSB SHEATHING IS TO BE INSTALLED ON ALL EXTERIOR WALLS ATTACHED w/ 6d COMMON NAILS OR 8d (2 1/2" LONG x 0.135" DIAMETER) NAILS SPACED 6" O.C. ALONG PANEL EDGES AND 12" O.C. IN THE FIELD (UNO).
7. GB REFERS TO THE "GYPSUM BOARD" WALL BRACING METHOD. 1/2" (MIN) GYPSUM WALL BOARD IS TO BE INSTALLED ON BOTH SIDES OF THE BRACED WALL, FASTENED WITH 1 1/4" SCREWS OR 1 5/8" NAILS SPACED 7" O.C. ALONG PANEL EDGES INCLUDING TOP AND BOTTOM PLATES AND INTERMEDIATE SUPPORTS (UNO). VERIFY ALL FASTENER OPTIONS FOR 1/2" AND 5/8" GYPSUM PRIOR TO CONSTRUCTION. FOR INTERIOR FASTENER OPTIONS SEE TABLE R102.3.5. FOR EXTERIOR FASTENER OPTIONS SEE TABLE R602.10.1. EXTERIOR GB TO BE INSTALLED VERTICALLY.
8. REQUIRED BRACED WALL LENGTH FOR EACH SIDE OF THE CIRCUMSCRIBED RECTANGLE ARE INTERPOLATED PER TABLE R602.10.3. METHOD CS-USP CONTRIBUTES ITS ACTUAL LENGTH, METHOD GB CONTRIBUTES 5 ITS ACTUAL LENGTH, AND METHOD PF CONTRIBUTES 1.5 TIMES ITS ACTUAL LENGTH.

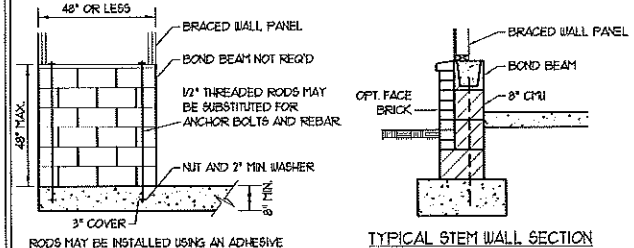
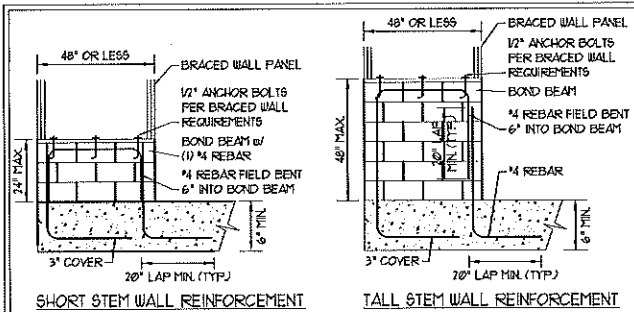


OVER CONCRETE OR MASONRY BLOCK FOUNDATION

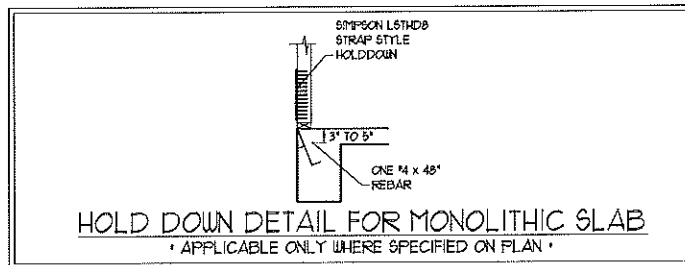
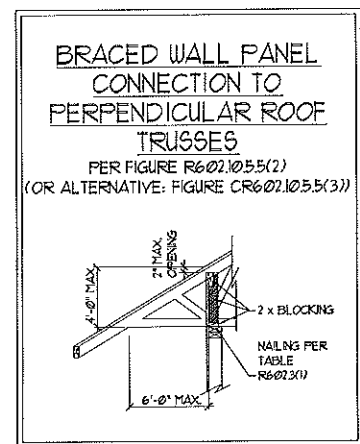
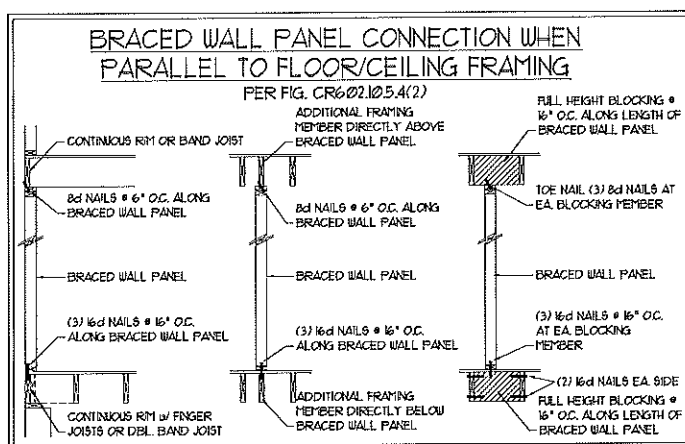
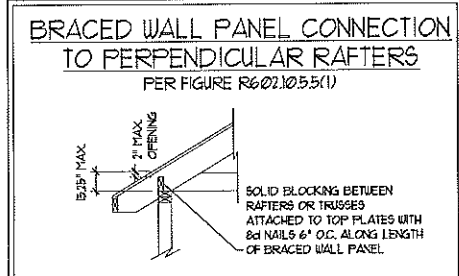
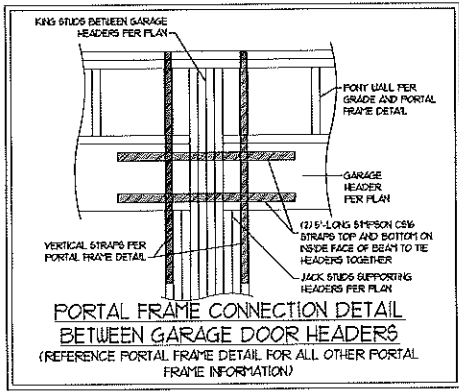
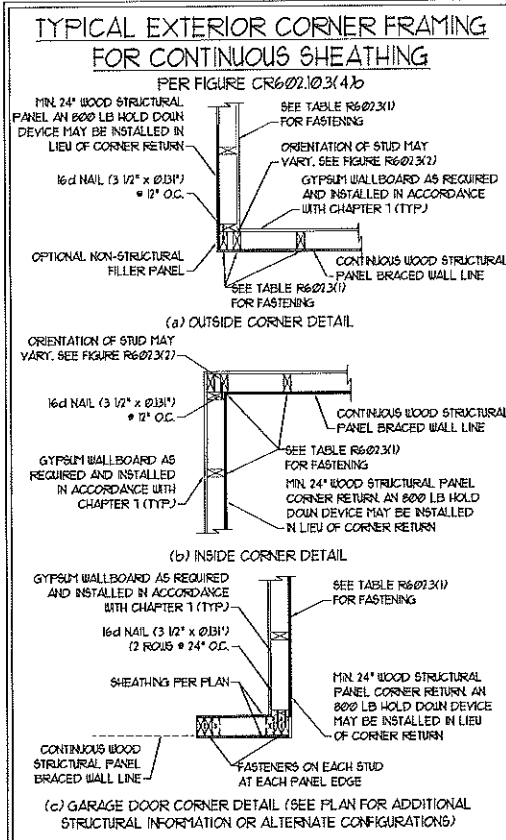
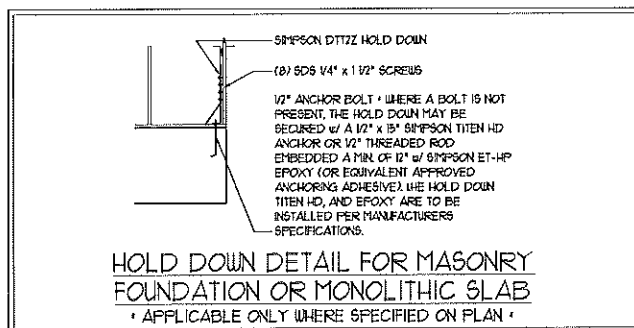
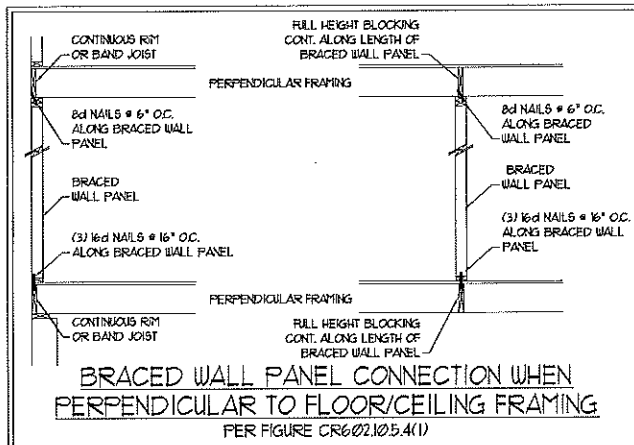


OVER RAISED WOOD FLOOR - FRAMING ANCHOR OPTION  
\* APPLICABLE w/ GREATER THAN 12" KNEE WALL HEIGHTS IN CRAIL SPACE AND ABOVE FRAMED BASEMENT WALLS \*

METHOD PF-PORTAL FRAME DETAIL



NOTE: GROUT BOND BEAMS AND ALL CELLS WHICH CONTAIN REBAR, THREADED RODS AND ANCHOR BOLTS  
MASONRY STEM WALLS SUPPORTING BRACED WALL PANELS  
PER FIGURE R602.10.5.3

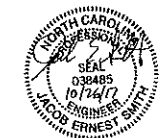


**J.S. THOMPSON ENGINEERING, INC.**  
606 WADE AVE. SUITE 104 RALEIGH, NC 27605  
PHONE: (919) 789-9919 FAX: (919) 789-9921  
N.C. LICENSE NO.: C-1171

WALL BRACING NOTES AND DETAILS

DATE: MAY 12, 2017  
SCALE: NONE  
DRAWN BY: JST  
ENGINEERED BY: JST  
REVIEWED BY: JES

BRACED WALL NOTES AND DETAILS AND PF DETAIL



**GENERAL NOTES**

- ENGINEER'S SEAL APPLIES ONLY TO STRUCTURAL COMPONENTS INCLUDING ROOF RAFTERS, HIPS, VALLEYS, RIDGES, FLOORS, WALLS, BEAMS, HEADERS, COLUMNS, CANTILEVERS, OFFSET LOAD BEARING WALLS, PIERS, GIRDER SYSTEM AND FOOTING. ENGINEER'S SEAL DOES NOT CERTIFY DIMENSIONAL ACCURACY OF ARCHITECTURAL LAYOUT INCLUDING ROOF. ENGINEER'S SEAL DOES NOT APPLY TO I-JOIST OR FLOOR/ROOF TRUSS LAYOUT DESIGN AND ACCURACY.
- ALL CONSTRUCTION SHALL CONFORM TO THE LATEST REQUIREMENTS OF THE NORTH CAROLINA RESIDENTIAL CODE (NRC) 2012 EDITION, PLUS ALL LOCAL CODES AND REGULATIONS. THE STRUCTURAL ENGINEER IS NOT RESPONSIBLE FOR, AND WILL NOT HAVE CONTROL OF, CONSTRUCTION MEANS, METHODS, TECHNIQUES, SEQUENCES OR PROCEDURES, OR SAFETY PRECAUTIONS AND PROGRAMS IN CONNECTION WITH THE CONSTRUCTION WORK. NOR WILL THE ENGINEER BE RESPONSIBLE FOR THE CONTRACTOR'S FAILURE TO CARRY OUT THE CONSTRUCTION WORK IN ACCORDANCE WITH THE CONTRACT DOCUMENTS.
- STRUCTURAL DESIGN BASED ON THE PROVISIONS OF THE NRC, 2012 EDITION (R301.4 - R301.7)
 

| DESIGN CRITERIA:               | LIVE LOAD (PSF)                                    | DEAD LOAD (PSF) | DEFLECTION (IN) |
|--------------------------------|--|-----------------|-----------------|
| ATTIC WITH LIMITED STORAGE     | 20   | 10              | L/240           |
| ATTIC WITHOUT STORAGE          | 10   | 10              | L/360           |
| DECKS                          | 40   | 10              | L/360           |
| EXTERIOR BALCONIES             | 40   | 10              | L/360           |
| FIRE ESCAPES                   | 40   | 10              | L/360           |
| HANDRAILS/GUARDRAILS           | 200 LB OR 50 (FLP)                                 | 10              | L/360           |
| PASSENGER VEHICLE GARAGE       | 50   | 10              | L/360           |
| ROOMS OTHER THAN SLEEPING ROOM | 40   | 10              | L/360           |
| SLEEPING ROOMS                 | 30   | 10              | L/360           |
| STAIRS                         | 40   | 10              | L/360           |
| WIND LOAD                      | (BASED ON FIGURE R301.4(4) WIND ZONE AND EXPOSURE) |                 |                 |
| GROUND SNOW LOAD: Pg           | 20 (PSF)   |                 |                 |

  - I-JOIST SYSTEMS DESIGNED WITH 12 PSF DEAD LOAD
  - FLOOR TRUSS SYSTEMS DESIGNED WITH 15 PSF DEAD LOAD
- FOR 95 AND 100 MPH WIND ZONES, FOUNDATION ANCHORAGE IS TO COMPLY WITH SECTION R403.6 OF THE NRC, 2012 EDITION. FOR 110 MPH, 120 MPH, AND 130 MPH WIND ZONES, FOUNDATION ANCHORAGE IS TO COMPLY WITH SECTION 4504 OF THE NRC, 2012 EDITION.
- ENERGY EFFICIENCY COMPLIANCE AND INSULATION VALUES OF THE BUILDING TO BE IN ACCORDANCE WITH CHAPTER 1 OF THE NRC, 2012 EDITION.

**FOOTING AND FOUNDATION NOTES**

- FOUNDATION DESIGN BASED ON A MINIMUM ALLOWABLE BEARING CAPACITY OF 2000 PSF. CONTACT GEOTECHNICAL ENGINEER IF BEARING CAPACITY IS NOT ACHIEVED.
- FOR ALL CONCRETE SLABS AND FOOTINGS, THE AREA WITHIN THE PERIMETER OF THE BUILDING ENVELOPE SHALL HAVE ALL VEGETATION, TOP SOIL AND FOREIGN MATERIAL REMOVED. FILL MATERIAL SHALL BE FREE OF VEGETATION AND FOREIGN MATERIAL. THE FILL SHALL BE COMPACTED TO ASSURE UNIFORM SUPPORT OF THE SLAB, AND EXCEPT WHERE APPROVED, THE FILL DEPTHS SHALL NOT EXCEED 24" FOR CLEAN SAND OR GRAVEL. A 4" THICK BASED COURSE CONSISTING OF CLEAN GRADED SAND OR GRAVEL SHALL BE PLACED. A BASE COURSE IS NOT REQUIRED WHERE A CONCRETE SLAB IS INSTALLED ON WELL-DRAINED OR SAND-GRAVEL MIXTURE SOILS CLASSIFIED AS GROUP 1, ACCORDING TO THE UNITED SOIL CLASSIFICATION SYSTEM IN ACCORDANCE WITH TABLE R403.3 OF THE NRC, 2012 EDITION.
- PROPERLY Dewater excavation prior to pouring concrete when bottom of concrete slab is at or below water table. If applicable, 3/4" - 1" DEEP CONTROL JOINTS ARE TO BE SAUED WITHIN 4 TO 12 HOURS OF CONCRETE FINISHING AND WALL LOCATIONS HAVE BEEN MARKED. ADJUST WHERE NECESSARY.
- CONCRETE SHALL CONFORM TO SECTION R402.2 OF THE NRC, 2012 EDITION. CONCRETE REINFORCING STEEL TO BE ASTM A615 GRADE 60. WELDED WIRE FABRIC TO BE ASTM A185. MAINTAIN A MINIMUM CONCRETE COVER AROUND REINFORCING STEEL OF 3" IN FOOTINGS AND 1 1/2" IN SLABS. FOR POURED CONCRETE WALLS, CONCRETE COVER FOR REINFORCING STEEL MEASURED FROM THE INSIDE FACE OF THE WALL SHALL NOT BE LESS THAN 3/4". CONCRETE COVER FOR REINFORCING STEEL MEASURED FROM THE OUTSIDE FACE OF THE WALL SHALL NOT BE LESS THAN 1 1/2" FOR 5 BARS OR SMALLER, AND NOT LESS THAN 2" FOR 6 BARS OR LARGER.
- MASONRY UNITS TO CONFORM TO ACE 530/ASCE 5/TMS 402. MORTAR SHALL CONFORM TO ASTM C270.
- THE UNSUPPORTED HEIGHT OF MASONRY PIERS SHALL NOT EXCEED FOUR TIMES THEIR LEAST DIMENSION FOR UNFILLED HOLLOW CONCRETE MASONRY UNITS AND TEN TIMES THEIR LEAST DIMENSION FOR SOLID OR SOLID FILLED PIERS. PIERS MAY BE FILLED SOLID WITH CONCRETE OR TYPE M OR S MORTAR. PIERS AND WALLS SHALL BE CAPPED WITH 8" OF SOLID MASONRY.
- THE CENTER OF EACH OF THE PIERS SHALL BEAR IN THE MIDDLE THIRD OF ITS RESPECTIVE FOOTING. EACH GIRDER SHALL BEAR IN THE MIDDLE THIRD OF THE PIERS.
- ALL CONCRETE AND MASONRY FOUNDATION WALLS ARE TO BE CONSTRUCTED IN ACCORDANCE WITH THE PROVISIONS OF SECTION R404 OF THE NRC, 2012 EDITION OR IN ACCORDANCE WITH ACI 318, ACI 309, NDS-A 106-B-A OR ACE 530/ASCE 5/TMS 402. MASONRY FOUNDATION WALLS ARE TO BE REINFORCED PER TABLE R404.1(1), R404.1(2), R404.1(3), OR R404.1(4) OF THE NRC, 2012 EDITION. CONCRETE FOUNDATION WALLS ARE TO BE REINFORCED PER TABLE R404.1(5) OF THE NRC, 2012 EDITION. STEP CONCRETE FOUNDATION WALLS TO 2 x 6 FRAMED WALLS AT 16" O.C. WHERE GRADE PERMITS (NO).

**FRAMING NOTES**

- ALL FRAMING LUMBER SHALL BE #2 SYP MINIMUM (Fb = 875 PSI, Fv = 315 PSI, E = 1600000 PSI) UNLESS NOTED OTHERWISE (INO). ALL TREATED LUMBER SHALL BE #2 SYP MINIMUM (Fb = 975 PSI, Fv = 315 PSI, E = 1600000 PSI) UNLESS NOTED OTHERWISE (INO).
- LAMINATED VENEER LUMBER (LVL) SHALL HAVE THE FOLLOWING MINIMUM PROPERTIES: Fb = 2600 PSI, Fv = 285 PSI, E = 1800000 PSI. LAMINATED STRAND LUMBER (LSL) SHALL HAVE THE FOLLOWING MINIMUM PROPERTIES: Fb = 2325 PSI, Fv = 310 PSI, E = 1550000 PSI. PARALLEL STRAND LUMBER (PSL) UP TO 1" DEPTH SHALL HAVE THE FOLLOWING MINIMUM PROPERTIES: Fc = 2500 PSI, E = 1600000 PSI. PARALLEL STRAND LUMBER (PSL) MORE THAN 1" DEPTH SHALL HAVE THE FOLLOWING MINIMUM PROPERTIES: Fc = 2500 PSI, E = 2000000 PSI. INSTALL ALL CONNECTIONS PER MANUFACTURER'S SPECIFICATIONS.
- STRUCTURAL STEEL SHALL CONFORM TO THE FOLLOWING ASTM SPECIFICATIONS
 

|                                |                                |
|--------------------------------|--------------------------------|
| A. W AND WT SHAPES:            | ASTM A992                      |
| B. CHANNELS AND ANGLES:        | ASTM A36                       |
| C. PLATES AND BARS:            | ASTM A36                       |
| D. HOLLOW STRUCTURAL SECTIONS: | ASTM A500 GRADE B              |
| E. STEEL PIPE:                 | ASTM A53, GRADE B, TYPE E OR S |
- STEEL BEAMS SHALL BE SUPPORTED AT EACH END WITH A MINIMUM BEARING LENGTH OF 3 1/2" AND FULL FLANGE WIDTH (NO). PROVIDE SOLID BEARING FROM BEAM SUPPORT TO FOUNDATION. BEAMS SHALL BE ATTACHED AT THE BOTTOM FLANGE TO EACH SUPPORT AS FOLLOWS (NO):
 

|                            |  |
|----------------------------|--|
| A. WOOD FRAMING            | (2) 1/2" DIA. x 4" LONG LAG SCREWS               |
| B. CONCRETE                | (2) 1/2" DIA. x 4" WEDGE ANCHORS                 |
| C. MASONRY (FULLY GROUTED) | (2) 1/2" DIA. x 4" LONG SIMPSON TITEN HD ANCHORS |

LATERAL SUPPORT IS CONSIDERED ADEQUATE PROVIDING THE JOISTS ARE TOE NAILED TO THE 2x NAILER ON TOP OF THE STEEL BEAM, AND THE 2x NAILER IS SECURED TO THE TOP OF THE STEEL BEAM w/ (2) ROWS OF SELF TAPPING SCREWS @ 16" O.C. OR (2) ROWS OF 1/2" DIAMETER BOLTS @ 16" O.C. IF 1/2" BOLTS ARE USED TO FASTEN THE NAILER, THE STEEL BEAM SHALL BE FABRICATED w/ (2) ROWS OF 3/16" DIAMETER HOLES @ 16" O.C.
- SQUARES DENOTE POINT LOADS WHICH REQUIRE SOLID BLOCKING TO GIRDER OR FOUNDATION. SHADED SQUARES DENOTE POINT LOADS FROM ABOVE WHICH REQUIRE SOLID BLOCKING TO SUPPORTING MEMBER BELOW.
- ALL LOAD BEARING HEADERS TO CONFORM TO TABLE R502.1(1) AND R502.1(2) OF THE NRC, 2012 EDITION OR BE (2) 2 x 6 WITH (1) JACK AND (1) KING STUD EACH END (NO), WHICHEVER IS GREATER. ALL HEADERS TO BE SECURED TO EACH JACK STUD WITH (4) 8d NAILS. ALL BEAMS TO BE SUPPORTED WITH (2) STUDS AT EACH BEARING POINT (NO).
- ALL BEAMS, HEADERS, OR GIRDER TRUSSES PARALLEL TO WALL ARE TO BEAR FULLY ON (1) JACK OR (2) STUDS MINIMUM OR THE NUMBER OF JACKS OR STUDS NOTED. ALL BEAMS OR GIRDER TRUSSES PERPENDICULAR TO WALL AND SUPPORTED BY (3) STUDS OR LESS ARE TO HAVE 1 1/2" MINIMUM BEARING (NO). ALL BEAMS OR GIRDER TRUSSES PERPENDICULAR TO WALL AND SUPPORTED BY MORE THAN (3) STUDS OR OTHER NOTED COLUMN ARE TO BEAR FULLY ON SUPPORT COLUMN FOR ENTIRE WALL DEPTH (NO). BEAM ENDS THAT BUTT INTO ONE ANOTHER ARE TO EACH BEAR EQUAL LENGTHS (NO).
- FLITCH BEAMS SHALL BE BOLTED TOGETHER USING 1/2" DIAMETER BOLTS (ASTM A307) WITH WASHERS PLACED AT THREADED END OF BOLT. BOLTS SHALL BE SPACED AT 24" CENTERS (MAXIMUM), AND STAGGERED AT TOP AND BOTTOM OF BEAM (2" EDGE DISTANCE) WITH (2) BOLTS LOCATED AT 6" FROM EACH END (NO).
- ALL I-JOIST OR TRUSS LAYOUTS ARE TO BE IN COMPLIANCE WITH THE OVERALL DESIGN SPECIFIED ON THE PLANS. ALL DEVIATIONS ARE TO BE BROUGHT TO THE ATTENTION OF THE ENGINEER OF RECORD PRIOR TO INSTALLATION.
- BRACED WALL PANELS SHALL BE CONSTRUCTED ACCORDING TO THE CURRENT NORTH CAROLINA RESIDENTIAL CODE WALL BRACING CRITERIA. THE AMOUNT, LENGTH, AND LOCATION OF BRACING SHALL COMPLY WITH ALL APPLICABLE TABLES IN SECTION R602.2.
- PROVIDE DOUBLE JOIST UNDER ALL WALLS PARALLEL TO FLOOR JOISTS. PROVIDE SUPPORT UNDER ALL WALLS PARALLEL TO FLOOR TRUSSES OR I-JOISTS PER MANUFACTURER'S SPECIFICATIONS. INSTALL BLOCKING BETWEEN JOISTS OR TRUSSES FOR POINT LOAD SUPPORT FOR ALL POINT LOADS ALONG OFFSET LOAD LINES.
- FOR ALL HEADERS SUPPORTING BRICK VENEER THAT ARE LESS THAN 8'-0" IN LENGTH, REST A 6" x 4" x 5/16" STEEL ANGLE WITH 6" MINIMUM EMBEDMENT AT SIDES FOR BRICK SUPPORT. FOR ALL HEADERS 8'-0" AND GREATER IN LENGTH, BOLT A 6" x 4" x 5/16" STEEL ANGLE TO HEADER WITH 1/2" LAG SCREWS AT 12" O.C. STAGGERED FOR BRICK SUPPORT. FOR ALL BRICK SUPPORT AT ROOF LINES, BOLT A 6" x 4" x 5/16" STEEL ANGLE TO 2 x 10 BLOCKING INSTALLED BETWEEN WALL STUDS WITH 1/2" LAG SCREWS AT 12" O.C. STAGGERED AND IN ACCORDANCE WITH SECTION R103.1.2.2 OF THE NRC, 2012 EDITION.
- FOR STICK FRAMED ROOFS, CIRCLES DENOTE (3) 2 x 4 POSTS FOR ROOF MEMBER SUPPORT. HIP SPLICES ARE TO BE SPACED A MINIMUM OF 8'-0". FASTEN MEMBERS WITH THREE ROWS OF 16d NAILS AT 16" O.C. FRAME DORMER WALLS ON TOP OF DOUBLE OR TRIPLE RAFTERS AS SHOWN (NO).
- FOR TRUSSED ROOFS, FRAME DORMER WALLS ON TOP OF 2 x 4 LADDER FRAMING AT 24" O.C. BETWEEN ADJACENT ROOF TRUSSES. STICK FRAME OVER-FRAMED ROOF SECTIONS WITH 2 x 8 RIDGES, 2 x 6 RAFTERS AT 16" O.C. AND FLAT 2 x 10 VALLEYS (NO).
- ALL 4 x 4 AND 6 x 6 POSTS TO BE INSTALLED WITH 1200 LB CAPACITY UPLIFT CONNECTORS TOP AND BOTTOM (NO). POSTS MAY BE SECURED USING ONE SIMPSON H6 OR L19X UPLIFT CONNECTOR FASTENED TO THE BAND AT THE BOTTOM AND THE BEAM AT THE TOP OF EACH POST. ONE 16" SECTION OF SIMPSON C56 COIL STRAPPING WITH (8) 8d HDG NAILS AT EACH END MAY BE USED IN LIEU OF EACH TRUSS STRAP IF DESIRED. FOR MASONRY OR CONCRETE FOUNDATION USE SIMPSON POST BASE.

**J.S. THOMPSON  
ENGINEERING, INC**  
606 WADE AVE., SUITE 104 - RALEIGH, NC 27605  
PHONE: (919) 789-9919 FAX: (919) 789-9921  
N.C. LICENSE NO.: C-1733

STANDARD STRUCTURAL NOTES

DATE: AUGUST 21, 2011  
SCALE: N/A  
DRAWN BY: JES  
ENGINEERED BY: JES  
REVIEWED BY: JST

SHEET:  
STRUCTURAL  
NOTES

