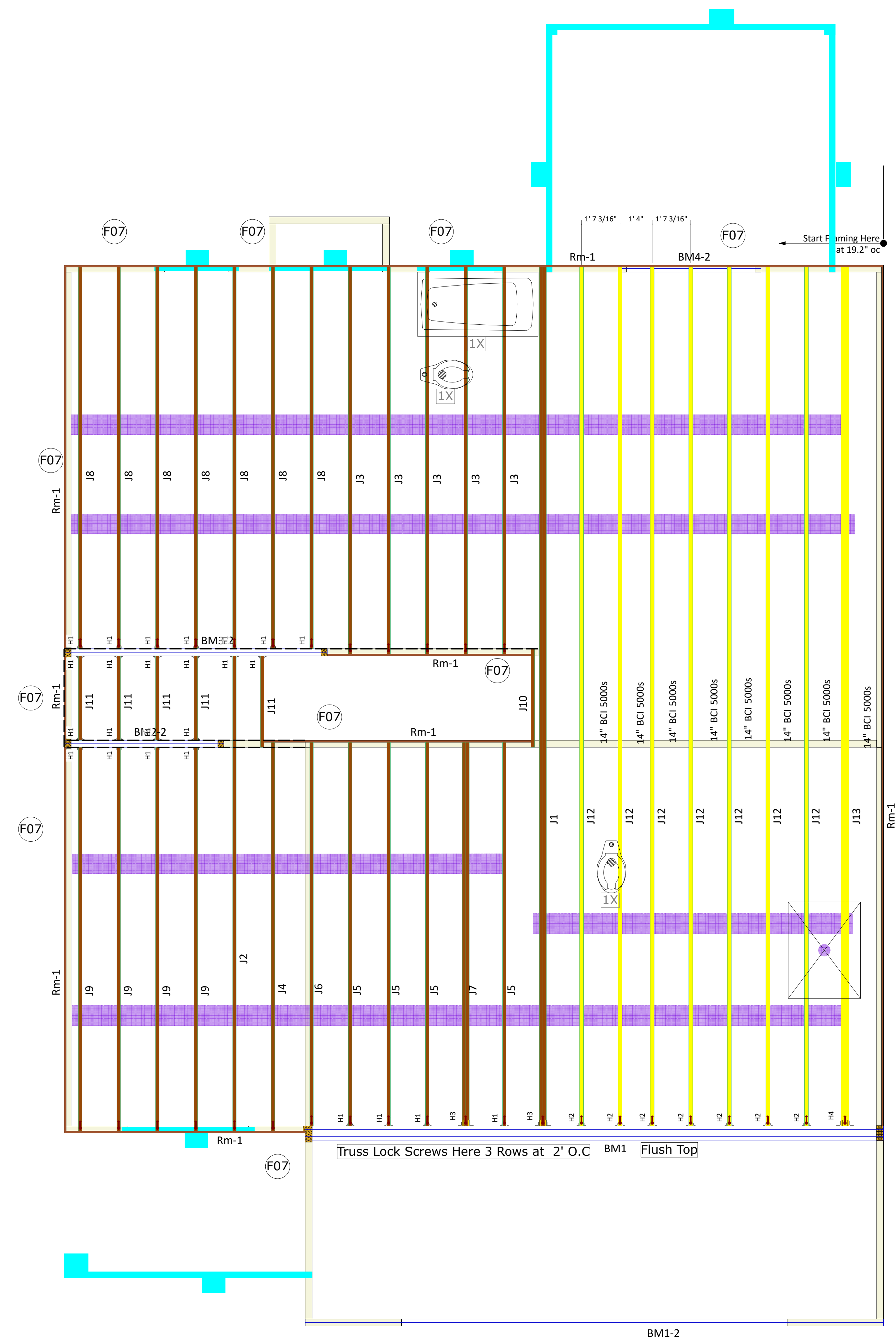
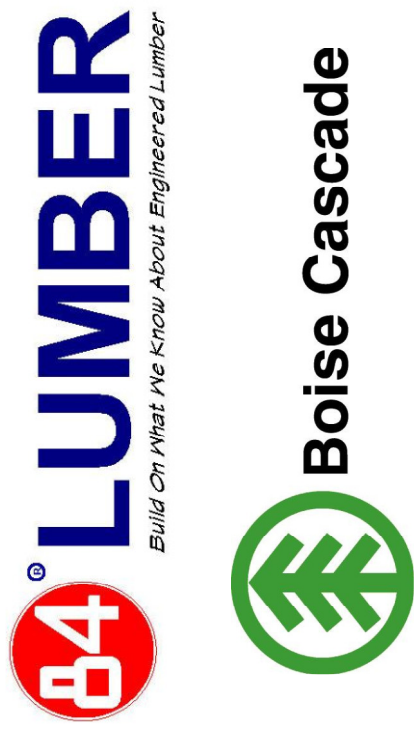


Caviness Land Development  
 CL 2136 w/CP GOR  
 Replace with Lot Number

Revisions:	BY:



Connector Summary			
PlotID	Qty	Manuf	Product
H1	25	Simpson	IUS 1.81/14
H2	7	Simpson	IUS 2.06/14
H3	2	Simpson	MIU 3.56/14
H4	1	Simpson	MIU 4.12/14

Products				
PlotID	Length	Product	Plies	Net Qty
J1	36' 0"	14" BCI® 4500s-1.8	2	2
J2	20' 0"	14" BCI® 4500s-1.8	1	1
J3	17' 0"	14" BCI® 4500s-1.8	1	5
J4	17' 0"	14" BCI® 4500s-1.8	1	1
J5	16' 0"	14" BCI® 4500s-1.8	1	4
J6	16' 0"	14" BCI® 4500s-1.8	1	1
J8	16' 0"	14" BCI® 4500s-1.8	1	7
J9	16' 0"	14" BCI® 4500s-1.8	1	4
J7	16' 0"	14" BCI® 4500s-1.8	2	2
J10	5' 0"	14" BCI® 4500s-1.8	1	1
J11	4' 0"	14" BCI® 4500s-1.8	1	5
J12	36' 0"	14" BCI® 5000s-1.8	1	7
J13	36' 0"	14" BCI® 5000s-1.8	2	2
BM4-2	6' 0"	1-3/4" x 9-1/4" VERSA-LAM® 2.0 3100 SP	2	2
BM1-2	24' 0"	1-3/4" x 11-7/8" VERSA-LAM® 2.0 3100 SP	2	2
BM3-2	12' 0"	1-3/4" x 14" VERSA-LAM® 2.0 3100 SP	2	2
BM2-2	8' 0"	1-3/4" x 14" VERSA-LAM® 2.0 3100 SP	2	2
BM1	24' 0"	1-3/4" x 24" VERSA-LAM® 2.0 3100 SP	4	4
Rm-1	12' 0"	1" x 14" BC RIM BOARD OSB	1	12
6 3/4"		Truss Lock Screws		36

SALES PRESENTATION DRAWING  
 No structural or dimensional check has been made of this design drawings of the building, therefore, the user is to check all applicable dimensions, quantities, loads, details carefully. This drawing has not been checked by Boise Engineering.

All I-Joist and Versa-Lam Beams  
 Must be Installed per The  
 Boise Cascade Installation Guide!

ALL DIMENSIONS AND CONDITIONS  
 TO BE REVIEWED AND APPROVED  
 BY BOTH THE CONTRACTOR AND  
 THE ENGINEER OF RECORD  
 PRIOR TO INSTALLATION

Squash Blocks Required  
 Under The Ends Of All LVL  
 And Point Loads For Load  
 Transfer - See Details

Second Floor Layout

Caviness Land Development  
 CL 2136 w/CP GOR  
 84 Lumber EWP

BC FRAMER II
Plan Date: 5/1/2018
Structural Date: 5/1/2018
By: GO-National
Sheet: 1/1