

**THIS LAYOUT IS INTENDED FOR THE PURPOSE OF TRUSS LOCATION AND PLACEMENT ONLY.  
REFER TO THE BUILDING PLANS FOR ACTUAL BUILDING CONSTRUCTION.**

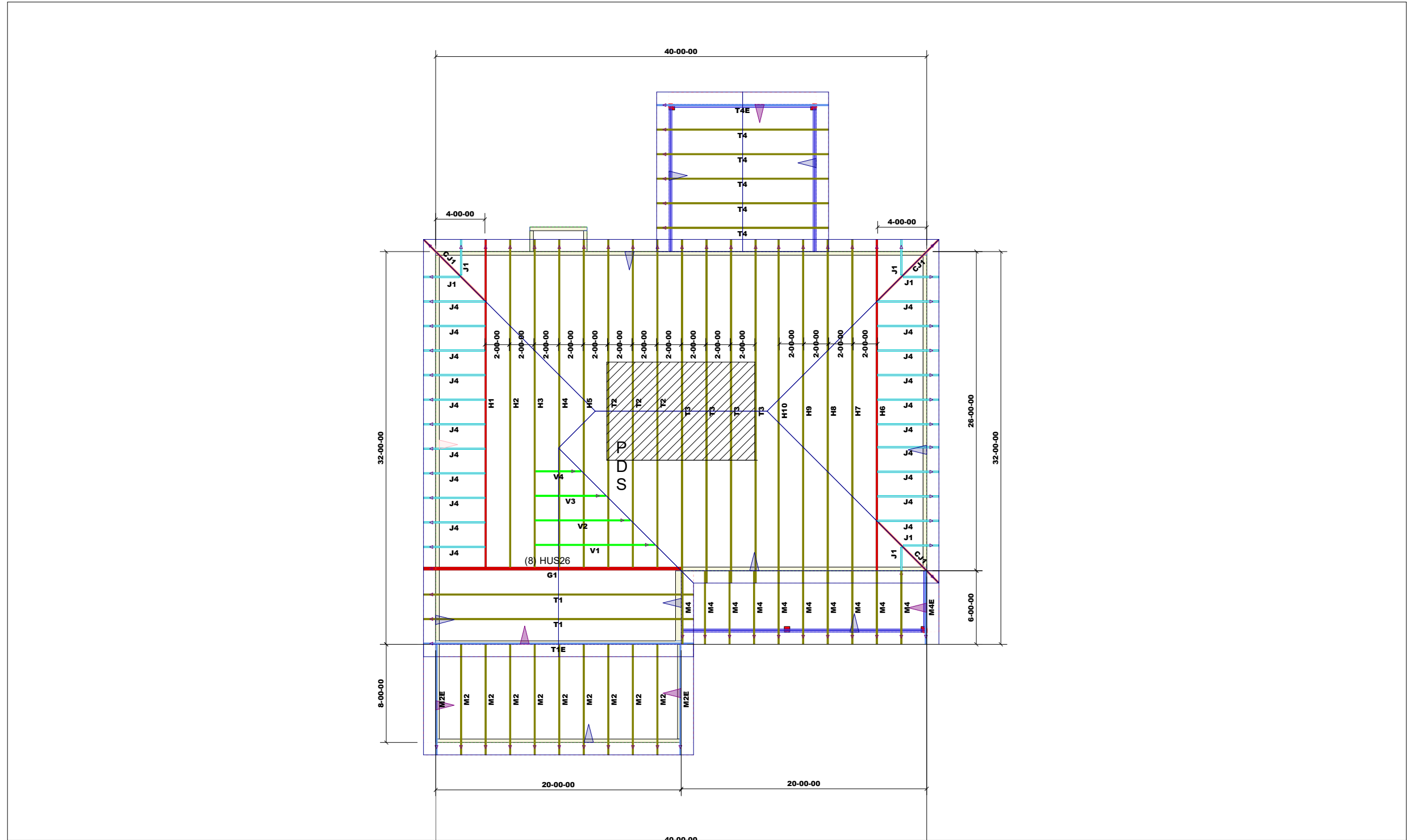
**GENERAL NOTES:**

DO NOT CUT OR MODIFY TRUSSES.

TRUSSES ARE SPACED 24" ON CENTER UNLESS NOTED OTHERWISE.

REFER TO THE INDIVIDUAL TRUSS DESIGN DRAWINGS FOR THE LOCATION OF LATERAL BRACING AND MULTI-PLY CONNECTION REQUIREMENTS.

PER ANSI TPI 1-2002 THE TRUSS ENGINEER IS RESPONSIBLE FOR TRUSS TO TRUSS CONNECTIONS AND TRUSS PLY TO PLY CONNECTIONS. THIS TRUSS PLACEMENT PLAN RECOMMENDS TRUSS TO BEARING CONNECTIONS AND TRUSS TO BEAM CONNECTIONS WHICH SHALL BE REVIEWED BY THE BUILDING DESIGNER. IT IS THE RESPONSIBILITY OF THE BUILDING DESIGNER TO RESOLVE ALL ROOF FORCES ADEQUATELY TO THE FOUNDATION.



Hardware List:		
A	8	HUS26
B	-	-
C	-	-
D	-	-
-	-	-
-	-	-
-	-	-

ROOF LOADING:
TOP LIVE: 20 PSF
TOP DEAD: 10 PSF
BOTTOM DEAD: 10 PSF
WIND SPEED: 115 MPH



DEDICATED TO QUALITY AND EXCELLENCE  
200 EMMETT ROAD  
DUNN, NORTH CAROLINA 28334  
PHONE: 910-892-8400  
FAX: 910-892-8384

PROJECT: <b>CL 2043</b>			
CUSTOMER: <b>Caviness Land</b>			
MODEL: <b>CL-2043 GOL</b>			
SCALE: <b>NOT TO SCALE</b>	P.O. NUMBER: <b>PO #</b>	ORDER: <b>Order #</b>	
DRAWN BY: <b>RE</b>	PRINT DATE: <b>Approved</b>	REV: <b>datetime 2/23/2018</b>	SHIP DATE: