

General Notes:

- 1.) "READ" Boise Installation Guide before installation of products.
- 2.) All, I-Joist, LVL beams, and Rim Board must be field cut to length.
- 3.) Contractor must verify and approve the material list.
- 4.) I-Joist may be moved 3" out of its own o.c. spacing, up to 19.2" o.c., to allow for plumbing drops.
- 5.) This layout, is a placement plan and, was designed in accordance with the original design of the structure (unless otherwise noted). See original plans for additional structural notes.
- 6.) Ceramic tile floors should be supported per APA standards. Additional joists may be required.
- 7.) HVAC & PLUMBER, "Review" Boise Installation Guide (Joist Hole Location & Sizing) Chart "BEFORE" cutting the I-joist product.
- 8.) "Blocking", are Random Length I-joist, Labeled as such.

| Connector Summary | | | |
|-------------------|-----|---------|---------------|
| PlotID | Qty | Manuf | Product |
| H1 | 10 | Simpson | IUS 1.81/14 |
| H2 | 1 | Simpson | IUS 3.56/14 |
| * | 33 | | 8" Bolt Sets* |

| Products | | | | |
|----------|--------|---|-------|---------|
| PlotID | Length | Product | Plies | Net Qty |
| BM1 | 4' 0" | 14" BCI® 4500s-1.8 | 1 | 1 |
| BM9-4 | 22' 0" | 1-3/4" x 16" VERSA-LAM® 2.0 3100 SP | 4 | 4 |
| BM8 | 4' 0" | 1-3/4" x 14" VERSA-LAM® 2.0 3100 SP | 1 | 1 |
| BM7 | 6' 0" | 1-3/4" x 14" VERSA-LAM® 2.0 3100 SP | 1 | 1 |
| BM6 | 8' 0" | 1-3/4" x 14" VERSA-LAM® 2.0 3100 SP | 1 | 1 |
| BM5-2 | 14' 0" | 1-3/4" x 14" VERSA-LAM® 2.0 3100 SP | 2 | 2 |
| BM4-2 | 10' 0" | 1-3/4" x 11-7/8" VERSA-LAM® 2.0 3100 SP | 2 | 2 |
| BM3-2 | 22' 0" | 1-3/4" x 11-7/8" VERSA-LAM® 2.0 3100 SP | 2 | 2 |
| BM2-2 | 12' 0" | 1-3/4" x 9-1/4" VERSA-LAM® 2.0 3100 SP | 2 | 4 |
| J15 | 4' 0" | 14" BCI® 4500s-1.8 | 1 | 1 |
| J14 | 5' 0" | 14" BCI® 4500s-1.8 | 1 | 5 |
| J13 | 8' 0" | 14" BCI® 4500s-1.8 | 1 | 3 |
| J10 | 14' 0" | 14" BCI® 4500s-1.8 | 1 | 4 |
| J11 | 14' 0" | 14" BCI® 4500s-1.8 | 1 | 4 |
| J12 | 14' 0" | 14" BCI® 4500s-1.8 | 1 | 2 |
| J3 | 17' 0" | 14" BCI® 4500s-1.8 | 1 | 2 |
| J4 | 17' 0" | 14" BCI® 4500s-1.8 | 1 | 4 |
| J5 | 17' 0" | 14" BCI® 4500s-1.8 | 1 | 1 |
| J6 | 17' 0" | 14" BCI® 4500s-1.8 | 1 | 4 |
| J7 | 17' 0" | 14" BCI® 4500s-1.8 | 1 | 6 |
| J8-2 | 17' 0" | 14" BCI® 4500s-1.8 | 2 | 2 |
| J9-2 | 17' 0" | 14" BCI® 4500s-1.8 | 2 | 2 |
| J1 | 18' 0" | 14" BCI® 4500s-1.8 | 1 | 3 |
| J2 | 18' 0" | 14" BCI® 4500s-1.8 | 1 | 7 |
| J16 | 22' 0" | 14" BCI® 60s-2.0 | 1 | 2 |
| J17-2 | 22' 0" | 14" BCI® 60s-2.0 | 2 | 2 |
| Rim1 | 12' 0" | 1" x 14" BC RIM BOARD OSB | 1 | 14 |
| BLK1 | 38' 0" | 14" BCI® 4500s-1.8 | 1 | 1 |

Note: Refer to current Boise Cascade Installation Guide for details not shown.

F13-D Nail each end with 1 - 3" (10d) nail. 1 1/2" minimum end bearing length at all floor and roof details.

F58 Double BCI® Joist Connection. Connection valid for all applications. Contact Boise EWP Engineering for specific conditions.

F10 Joist hanger. Backer block (12" wide min.) Nail with 10-10d nails. Install tight to top flange. Backer block required where top mount hanger load exceeds 250 lbs. Install tight to top flange.

F56 Exterior Wood Sheathing. 1/2" dia through bolts (ASTM A307 Grades A&B, SAE J429 Grades 1 or 2, or higher) with washers and nuts or 1/2" dia lag screws (full penetration) 550 lb capacity per fastener. Treated Ledger. Use only fasteners that are approved for use with corresponding wood treatment. Boise Rimboard. Design of moisture control by others. (only structural components shown above).

F05 23/32" min. plywood OSB or rimboard closure. Nail with 8d nails into each flange. BCI® joist blocking required for cantilever.

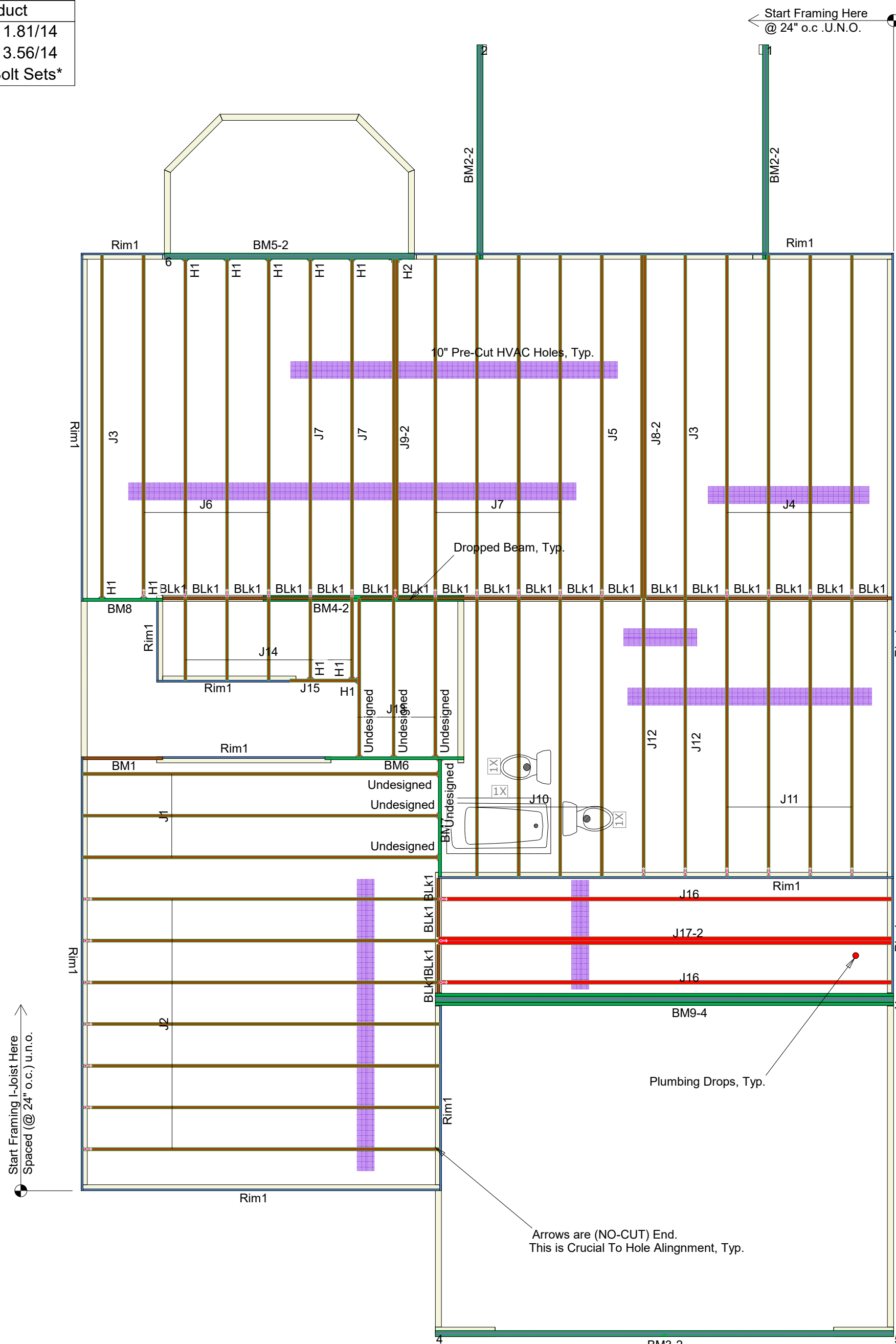
F07 See Boise literature for vertical load capacity. Boise Rimboard. Nail Boise Rimboard to BCI® joist with 8d nail into each flange.

F08 Solid block all posts from above to bearing below.

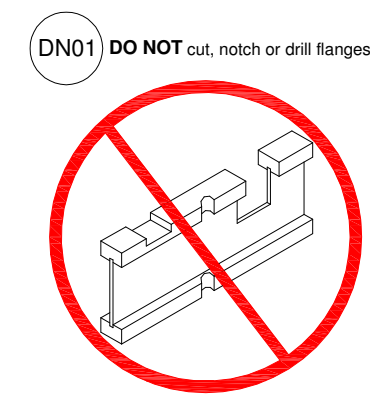
F07-A See Boise literature for vertical load capacity.

OJ-A Boise I-Joist can be offset up to 3" to avoid vertical plumbing.

B12-A Side Loaded Connection Double & Triple 1-3/4" Versa-Lam® Nail Pattern. 12" o.c. 16d sinker nails. See chart. Max. Uniform Load (lbs. per in. x 1'). Number of Members: 2 rows 3 rows; 2 470 705; 3 (a) 350 525. Stagger nails from both sides to avoid splitting. (a) Nail pattern for 3 - piece member must occur on both sides. Nail values may be increased by 15% for snow load roofs and by 25% for non - snow load roofs where building code allows.



Start Framing I-Joist Here Spaced @ 24" o.c. u.n.o.



Arrows are (NO-CUT) End. This is Crucial To Hole Alignment, Typ.

We Recommend Locating Plumbing Drops & Moving Joist Accordingly Before Installation

I-Joist Plot ID # & Length on Top of Flange

| | |
|--|-----|
| Revisions: | BY: |
| | |
| | |
| Build on what we know.™ | |
| Caviness Land Dev. Lot 307 Forest Oaks Model CL-3187 wCP | |
| 200 Emmett Drive, Dunn, N.C. 28334 (910) 892 + 8400 | |
| Scale: 1/4" = 1'-0" | |
| Date: 7/20/2018 | |
| By: KOG | |
| DWG: | |
| Sheet: 1 of 1 | |

2ND FLOOR LAYOUT