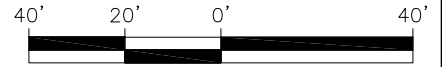


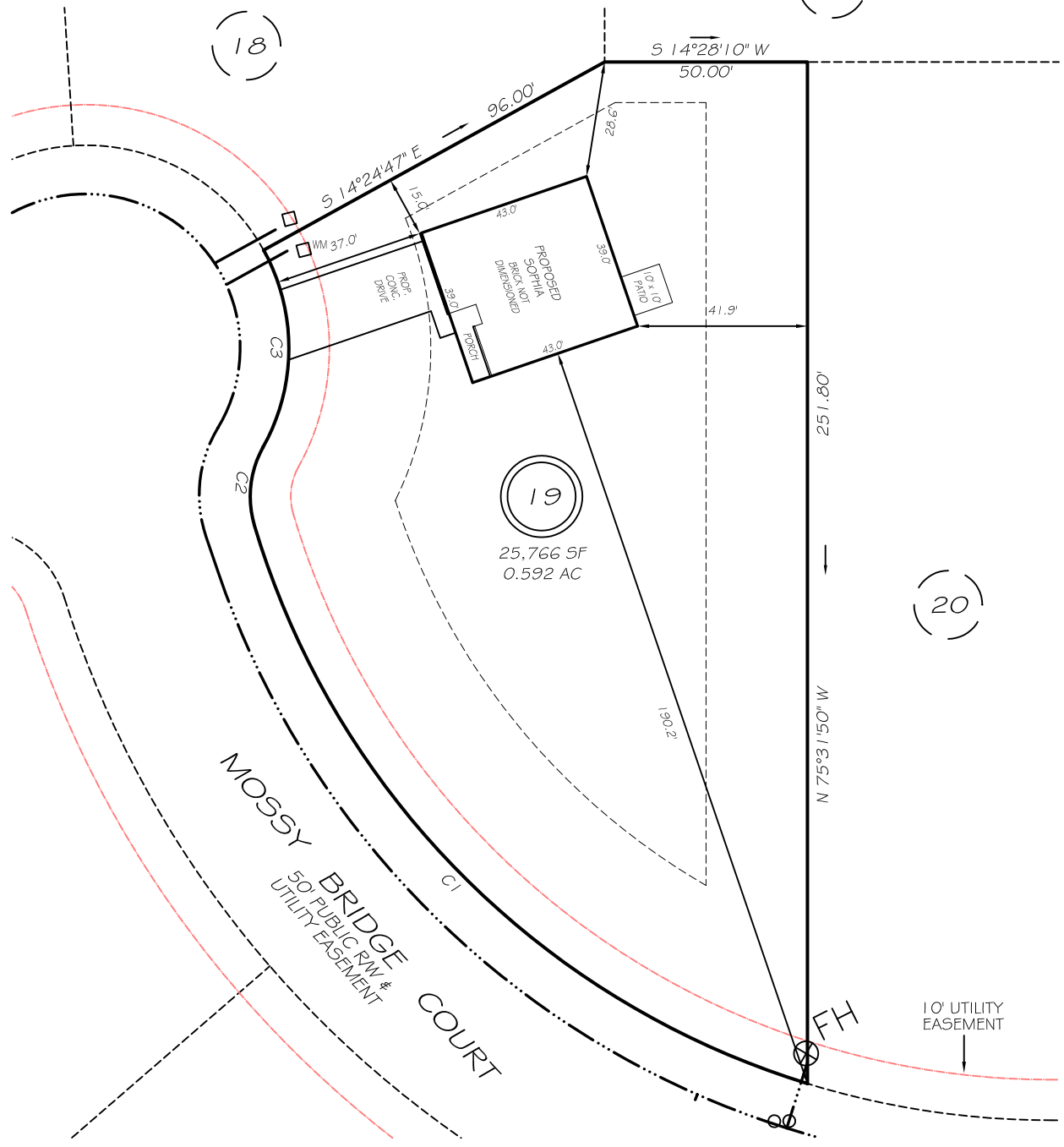
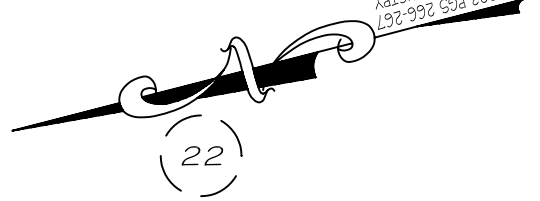
I, MICHAEL P. GRIFFIN, certify that under my direction and supervision this map was drawn from an actual field survey; that the error of closure of the survey as calculated by coordinates is 1: 10,000+; that the area shown hereon was calculated by coordinates. Dashed lines shown hereon were not surveyed.

Witness my hand and seal this day of MONTH 2025.



GRAPHIC SCALE
1" = 40'

BR 2023 P63 266-267
HARNETT CO. REGISTRY



IMPERVIOUS AREAS

HOUSE	1 686 SQ. FT.
DRIVE & WALKS	679 SQ. FT.
PATIO	100 SQ. FT.
TOTAL	2465 SQ. FT.
ALLOWED	9932 SQ. FT.

ZONED RA-30
SETBACKS

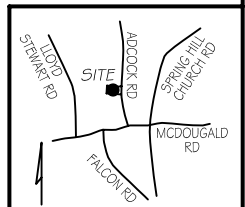
FRONT	35'
REAR	25'
SIDE	10'
CORNER SIDE	20'

C1 R=205.00' L=201.72' S59°43'40"W 193.68'
C2 R=25.00' L=19.96' N69°12'29"W 19.44'
C3 R=50.00' L=50.68' N75°22'23"W 48.54'

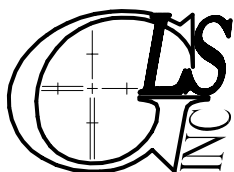
REVISION: ROTATE 2/24/25
REVISION: LEFT HAND 2/24/25
REVISION: MOVE HOUSE 2/20/25

LEGEND

EIP	EXISTING IRON PIPE	FES	FLARED END SECTION
IPS	IRON PIPE SET	WM	WATER METER
R/W	RIGHT OF WAY	CO	CLEAN OUT
N/F	NOW OR FORMERLY	FH	FIRE HYDRANT
EIS	EXISTING IRON STAKE	CB	CATCH BASIN



P R E L I M I N A R Y
NOT FOR RECORDATION,
SALES OR CONVEYANCE



GRIFFIN LAND SURVEYING, INC.

P. O. BOX 148
FUQUAY-VARINA, NC 27526
(919) - 567 - 1963

FIRM LIC.# C-1345

PLOT PLAN
FOR

A & G RESIDENTIAL

JONES CREEK MEADOWS

LOT 19

JONES CREEK LANE

FOUR OAKS, N.C.

HARNETT COUNTY UPPER LITTLE RIVER TOWNSHIP

DRAWN BY KDF

DATE 1/29/25

CHECKED BY MPG

SCALE 1" = 40'