



COMMENTS: \_\_\_\_\_

<u>LANDSCAPE POSITIONS</u>	<u>GROUP</u>	<u>TEXTURES</u>	<u>.1955 LTAR</u>	<u>CONSISTENCE MOIST</u>	<u>WET</u>
R-RIDGE	I	S-SAND	1.2 - 0.8	VFR-VERY FRIABLE FR-FRIABLE	NS-NON-STICKY SS-SLIGHTLY STICKY
S-SHOULDER SLOPE		LS-LOAMY SAND			
L-LINEAR SLOPE	II	SL-SANDY LOAM	0.8 - 0.6	FI-FIRM VFI-VERY FIRM	S-STICKY VS-VERY STICKY
FS-FOOT SLOPE		L-LOAM			
N-NOSE SLOPE	III	SI-SILT	0.6 - 0.3	EFI-EXTREMELY FIRM	NP-NON-PLASTIC SP-SLIGHTLY STICKY
H-HEAD SLOPE		SIL-SILT LOAM			
CC-CONCLAVE SLOPE		CL-CLAY LOAM			
CV-CONVEX SLOPE		SCL-SANDY CLAY LOAM			
T-TERRACE	IV	SIC-SILTY CLAY	0.4 - 0.1		P-PLASTIC VP-VERY PLASTIC
FP-FLOOD PLAN		C-CLAY SC-SANDY CLAY			

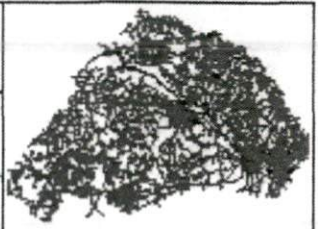
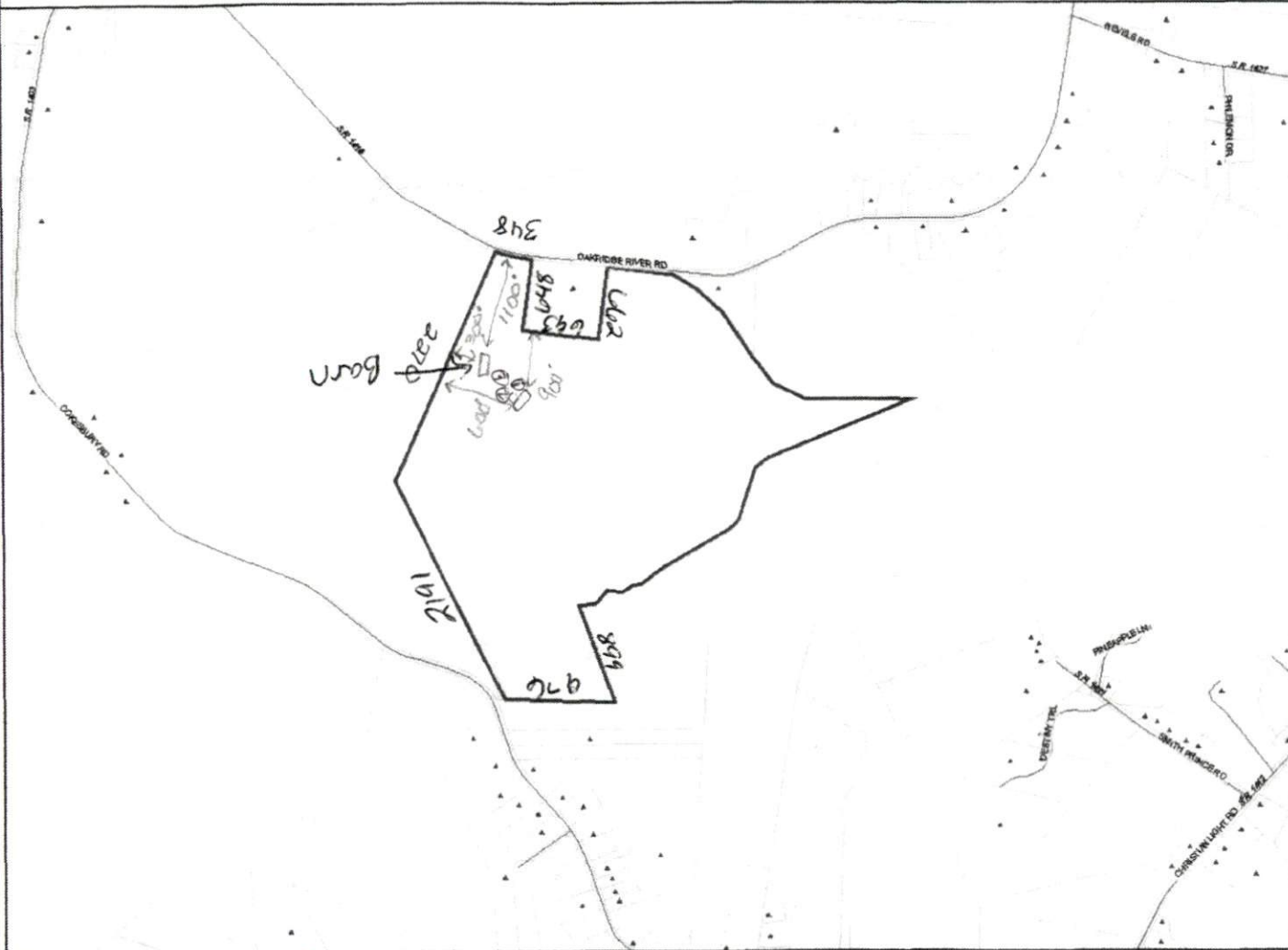
STRUCTURE  
 SG-SINGLE GRAIN  
 M-MASSIVE  
 CR-CRUMB  
 GR-GRANULAR  
 SBK-SUBANGULAR BLOCKY  
 ABK-ANGULAR BLOCKY  
 PL-PLATY  
 PR-PRISMATIC

MINERALOGY  
 SLIGHTLY EXPANSIVE  
 EXPANSIVE

Show profile locations and other site features (dimensions, references or benchmark, and North)

A large grid for site profile locations and other site features. The grid is approximately 20 columns wide and 25 rows high, providing a space for drawing and recording site data.

HARNETT COUNTY, NORTH CAROLINA GIS/LAND RECORDS



- ▲ Address Points
- ~ cfriv
- ~ roads
- ~ Centerline
- ~ Parcels

SITE PLAN APPROVAL  
 DISTRICT BA30 USE DW/HT  
 #BEDROOMS 3  
11-7-11  
*K. Higginbotham*

*Planning*  
*Not to Scale*

Harnett County GIS  
 305 W Cornelius Harnett Blvd, Suite 100  
 Lillington, NC 27546  
 Phone: 910-893-7523 WWW.HARNETT.ORG

Any use of this map shall be at the sole risk of the user of this map. Although, all effort has been taken to insure accuracy in the data presented, Harnett County makes no warranty, expressed or implied, as to the accuracy of this information represented herein. Any user of this product shall hold harmless Harnett County, its elected officials, employees and agents from and against any claim, damage, loss, action, cause of action, or liability arising from the use of this GIS product.

