

COMMENTS: _____

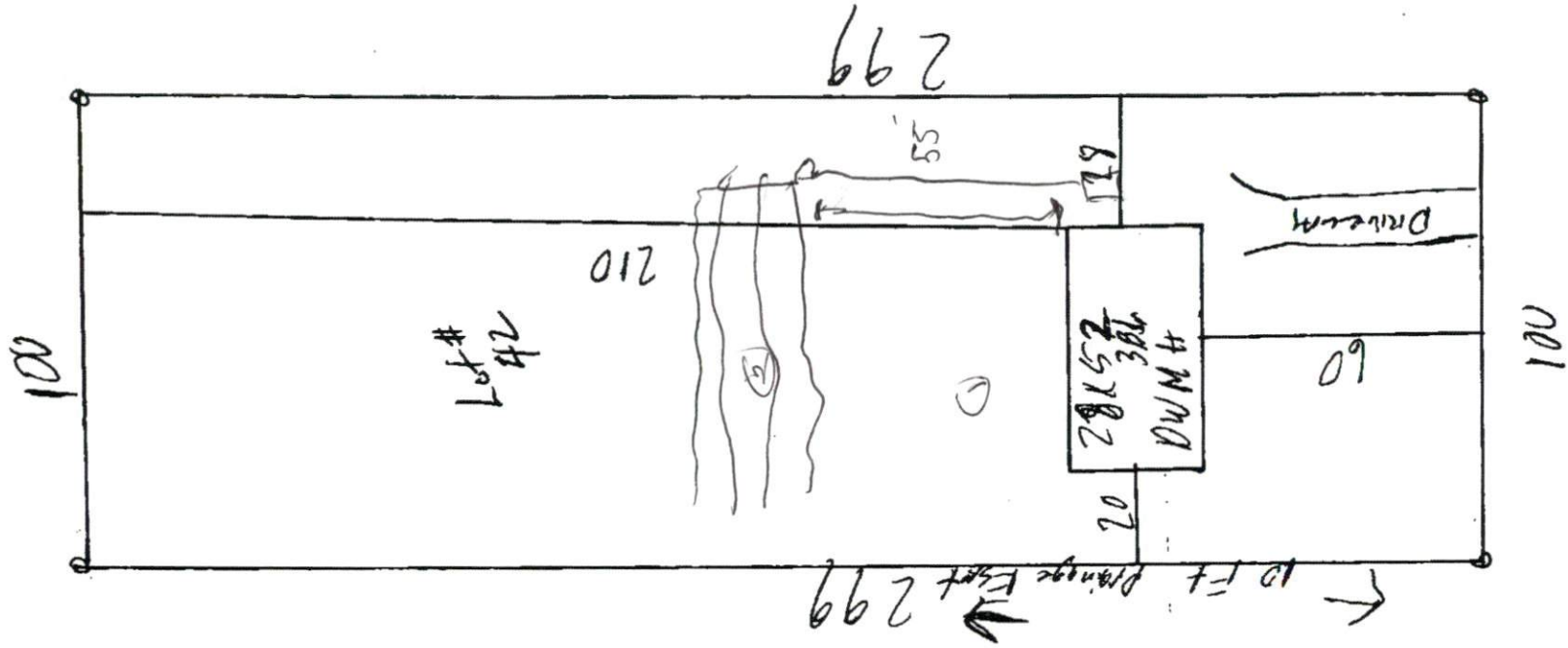
<u>LANDSCAPE POSITIONS</u>	<u>GROUP</u>	<u>TEXTURES</u>	<u>.1955 LTAR</u>	<u>CONSISTENCE MOIST</u>	<u>WET</u>
R-RIDGE S-SHOULDER SLOPE L-LINEAR SLOPE FS-FOOT SLOPE N-NOSE SLOPE H-HEAD SLOPE CC-CONCLAVE SLOPE CV-CONVEX SLOPE T-TERRACE FP-FLOOD PLAN	I	S-SAND LS-LOAMY SAND	1.2 - 0.8	VFR-VERY FRIABLE FR-FRIABLE	NS-NON-STICKY SS-SLIGHTLY STICKY
	II	SL-SANDY LOAM L-LOAM	0.8 - 0.6	FI-FIRM VFI-VERY FIRM EFI-EXTREMELY FIRM	S-STICKY VS-VERY STICKY NP-NON-PLASTIC SP-SLIGHTLY STICKY
	III	SI-SILT SIL-SILT LOAM CL-CLAY LOAM SCL-SANDY CLAY LOAM	0.6 - 0.3		P-PLASTIC VP-VERY PLASTIC
	IV	SIC-SILTY CLAY C-CLAY SC-SANDY CLAY	0.4 - 0.1		

STRUCTURE
SG-SINGLE GRAIN
M- MASSIVE
CR-CRUMB
GR-GRANULAR
SBK-SUBANGULAR BLOCKY
ABK-ANGULAR BLOCKY
PL-PLATY
PR-PRISMATIC

MINERALOGY
SLIGHTLY EXPANSIVE
EXPANSIVE

Show profile locations and other site features (dimensions, references or benchmark, and North)

A large grid for recording profile locations and site features. The grid consists of 20 columns and 20 rows of squares. The top row is intended for profile locations and other site features, including dimensions, references, benchmarks, and North.



[Handwritten signature]

SITE PLAN APPROVAL
 DISTRICT RA20 USE DWMA
 #BEDROOMS 3
 7-21-14 YEAH
 Zoning Administrator
 Date

Ray Byrd Rd