

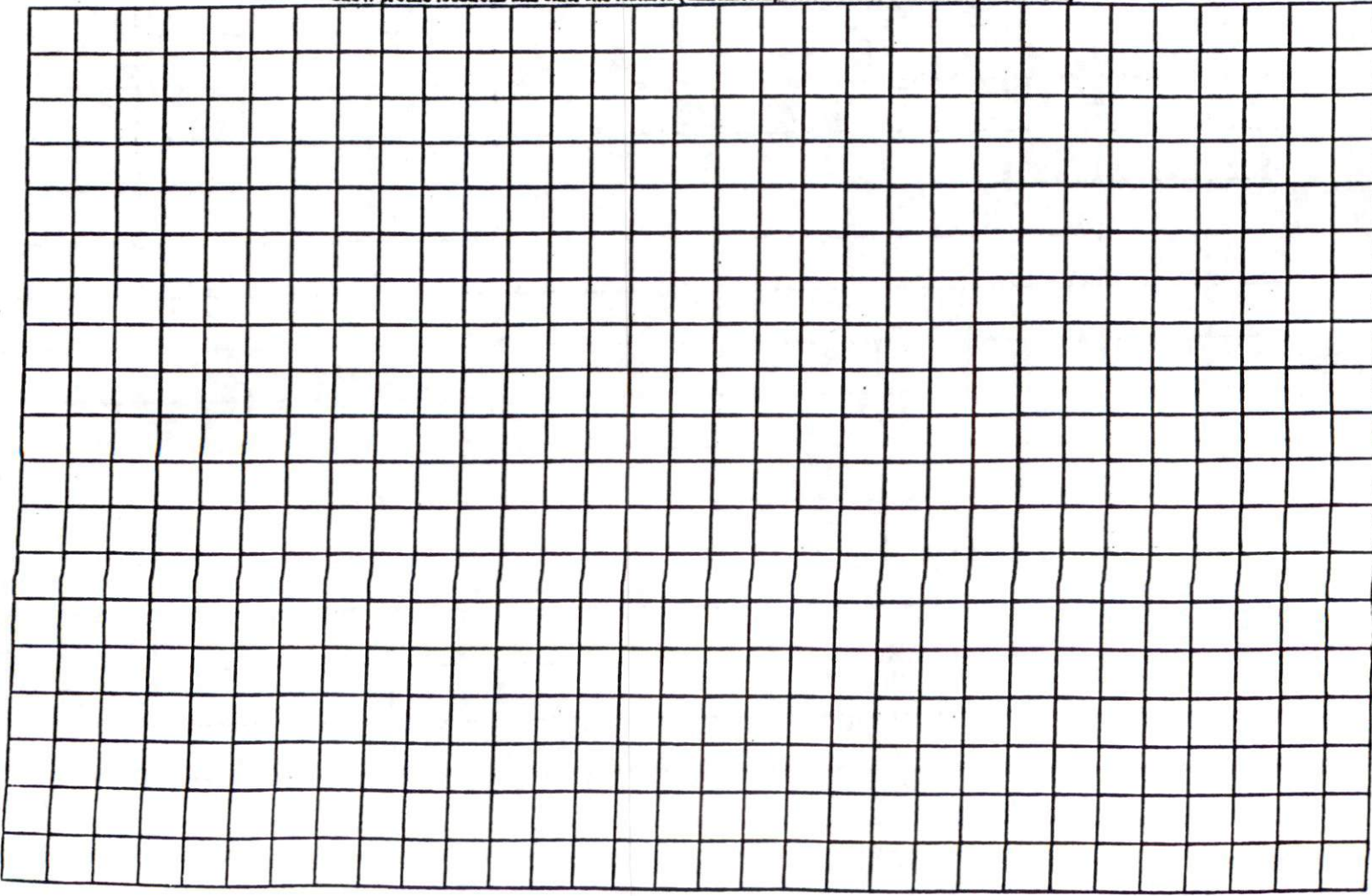
COMMENTS: _____

LANDSCAPE POSITIONS	GROUP	TEXTURES	1955 LTAR	CONSISTENCE MOIST	WBT
R-RIDGE	I	S-SAND	1.2 - 0.8	VFR-VERY FRIABLE	NS-NON-STICKY
S-SHOULDER SLOPE		LS-LOAMY SAND		FR-FRIABLE	SS-SLIGHTLY STICKY
L-LINEAR SLOPE	II	SL-SANDY LOAM	0.8 - 0.6	FI-FIRM	S-STICKY
F3-FOOT SLOPE		L-LOAM		VFI-VERY FIRM	V3-VERY STICKY
N-NOSE SLOPE	III	SI-SILT	0.6 - 0.3	EFI-EXTREMELY FIRM	NP-NON-PLASTIC
H-HEAD SLOPE		SIL-SILT LOAM			SP-SLIGHTLY STICKY
CC-CONCLAVE SLOPE		CL-CLAY LOAM			P-PLASTIC
CV-CONVEX SLOPE		SCL-SANDY CLAY LOAM			VP-VERY PLASTIC
T-TERRACE	IV	SIC-SILTY CLAY	0.4 - 0.1		
FP-FLOOD PLAN		C-CLAY			
		SC-SANDY CLAY			

STRUCTURE
 SG-SINGLE GRAIN
 M-MASSIVE
 CR-CRUMB
 GR-GRANULAR
 SBK-SUBANGULAR BLOCKY
 ABK-ANGULAR BLOCKY
 PL-PLATY
 PR-PRISMATIC

MINERALOGY
 SLIGHTLY EXPANSIVE
 EXPANSIVE

Show profile locations and other site features (dimensions, references or benchmark, and North)

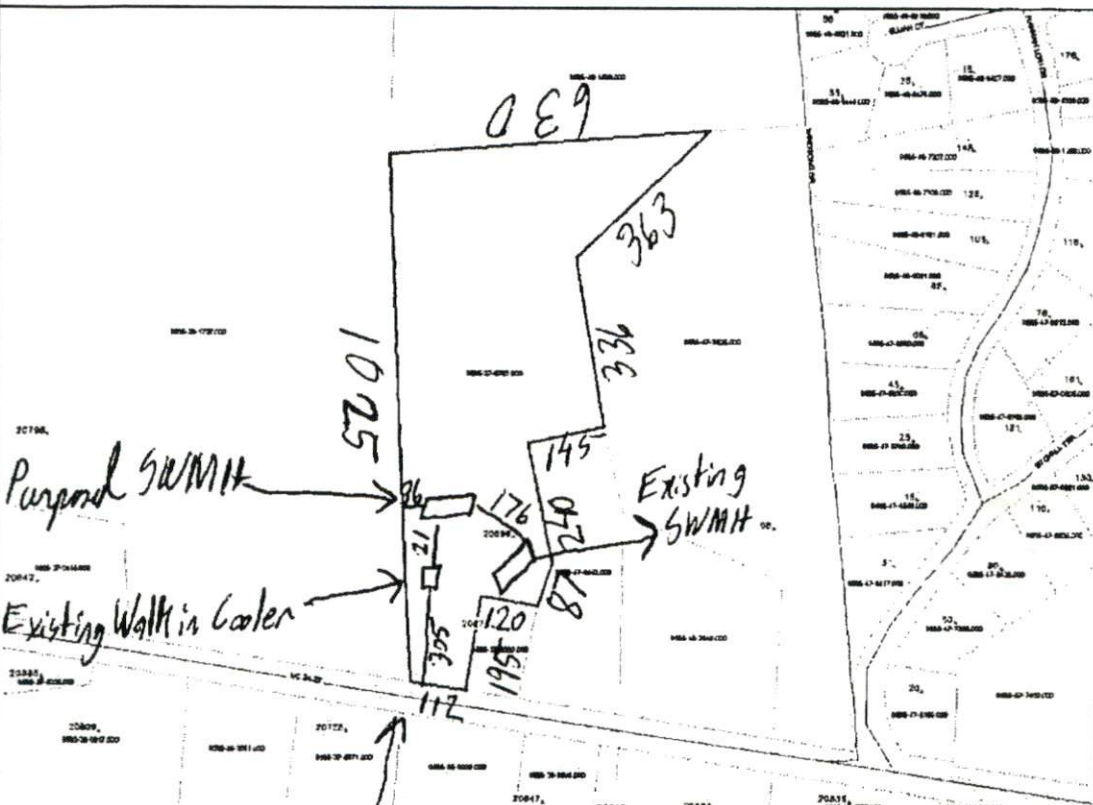


Handwritten notes and sketches at the top right of the page, including a small diagram of a rectangular structure and the text "9x50" and "24'".

HARNETT COUNTY, NORTH CAROLINA GIS/LAND RECORDS



- ▲ AddressPoints
- ~ cfr/v
- ~ roads
- ~ Centerline
- Parcels



Harnett County GIS
305 W. Cornelius Harnett Blvd, Suite 100
Lillington, NC 27546
Phone: 910-893-7523 WWW.HARNETT.ORG

Any use of this map shall be at the sole risk of the user of this map. Although, all effort has been taken to insure accuracy in the data presented, Harnett County makes no warranty, expressed or implied, as to the accuracy of this information represented herein. Any user of this product shall hold harmless Harnett County, its elected officials, employees and agents from and against any claim, damage, loss, action, cause of action, or liability arising from the use of the GIS product.



HWY 24/27

8.19 Ac

PL# E/677-D

Not to Scale
 SITE PLAN APPROVAL
 DISTRICT RA 20B USE Proposed SWMH
 #BEDROOMS 2
 Date 5-13-10
 V. C. [Signature]
 Zoning Administrator

[Signature]