

**SOIL/SITE EVALUATION
 for ON-SITE WASTEWATER SYSTEM**

Owner: *C. C. C.*

Applicant:

Date Evaluated:

Address:

Property Size:

Proposed Facility:

Design Flow (.1949): *365'*

Property Recorded:

Location of Site: *NC 24121*

Water Supply:

Public Individual Well Spring Other

Evaluation Method:

Auger Boring Pit Cut

Type of Wastewater:

Sewage Industrial Process Mixed

P R O F I L E #	.1940 Landscape Position/ Slope%	Horizon Depth (IN.)	SOIL MORPHOLOGY .1941		OTHER PROFILE FACTORS					Profile Class & LTAR
			.1941 Structure/ Texture	.1941 Consistence Mineralogy	.1942 Soil Wetness/ Color	.1943 Soil Depth (IN.)	.1956 Sapro Class	.1944 Restr Horiz		
		<i>024</i>	<i>L1</i>	<i>FR/GR</i>	<i>10YR 8/1</i>	<i>4Y</i>				
		<i>244</i>	<i>SCL</i>	<i>FR/GR</i>	<i>10YR 6/1</i>					
		<i>024</i>	<i>L1</i>	<i>FR/GR</i>	<i>10YR 8/1</i>	<i>4Y</i>				
		<i>244</i>	<i>SCL</i>	<i>FR/GR</i>	<i>10YR 6/1</i>					
		<i>024</i>	<i>L1</i>	<i>FR/GR</i>	<i>10YR 8/1</i>	<i>4Y</i>				
		<i>244</i>	<i>SCL</i>	<i>FR/GR</i>	<i>10YR 6/1</i>					
		<i>024</i>	<i>L1</i>	<i>FR/GR</i>	<i>10YR 8/1</i>	<i>4Y</i>				
		<i>244</i>	<i>SCL</i>	<i>FR/GR</i>	<i>10YR 6/1</i>					
		<i>024</i>	<i>L1</i>	<i>FR/GR</i>	<i>10YR 8/1</i>	<i>4Y</i>				
		<i>244</i>	<i>SCL</i>	<i>FR/GR</i>	<i>10YR 6/1</i>					
		<i>024</i>	<i>L1</i>	<i>FR/GR</i>	<i>10YR 8/1</i>	<i>4Y</i>				
		<i>244</i>	<i>SCL</i>	<i>FR/GR</i>	<i>10YR 6/1</i>					

Description	Initial System	Repair System
Available Space (.1945)		
System Type(s)	<i>GRAND</i>	<i>LPP</i>
Site LTAR	<i>.6</i>	<i>.3</i>

Other Factors (.1946): _____
 Site Classification (.1948): *9.1*
 Evaluated By: *J. White*
 Others Present: *Holes by Jesse*

COMMENTS: _____

<u>LANDSCAPE POSITIONS</u>	<u>GROUP</u>	<u>TEXTURES</u>	<u>.1955 LTAR</u>	<u>CONSISTENCE MOIST</u>	<u>WET</u>
R-RIDGE	I	S-SAND	1.2 - 0.8	VFR-VERY FRIABLE	NS-NON-STICKY
S-SHOULDER SLOPE		LS-LOAMY SAND			
L-LINEAR SLOPE	II	SL-SANDY LOAM	0.8 - 0.6	FR-FRIABLE FI-FIRM VFI-VERY FIRM EFI-EXTREMELY FIRM	SS-SLIGHTLY STICKY S-STICKY VS-VERY STICKY NP-NON-PLASTIC SP-SLIGHTLY STICKY P-PLASTIC VP-VERY PLASTIC
FS-FOOT SLOPE		L-LOAM			
N-NOSE SLOPE					
H-HEAD SLOPE					
CC-CONCLAVE SLOPE	III	SI-SILT-	0.6 - 0.3		
CV-CONVEX SLOPE		SIL-SILT LOAM			
T-TERRACE		CL-CLAY LOAM			
FP-FLOOD PLAN		SCL-SANDY CLAY LOAM			
		SICL-SILTY CLAY LOAM			
	IV	SIC-SILTY CLAY	0.4 - 0.1		
		C-CLAY			
		SC-SANDY CLAY			

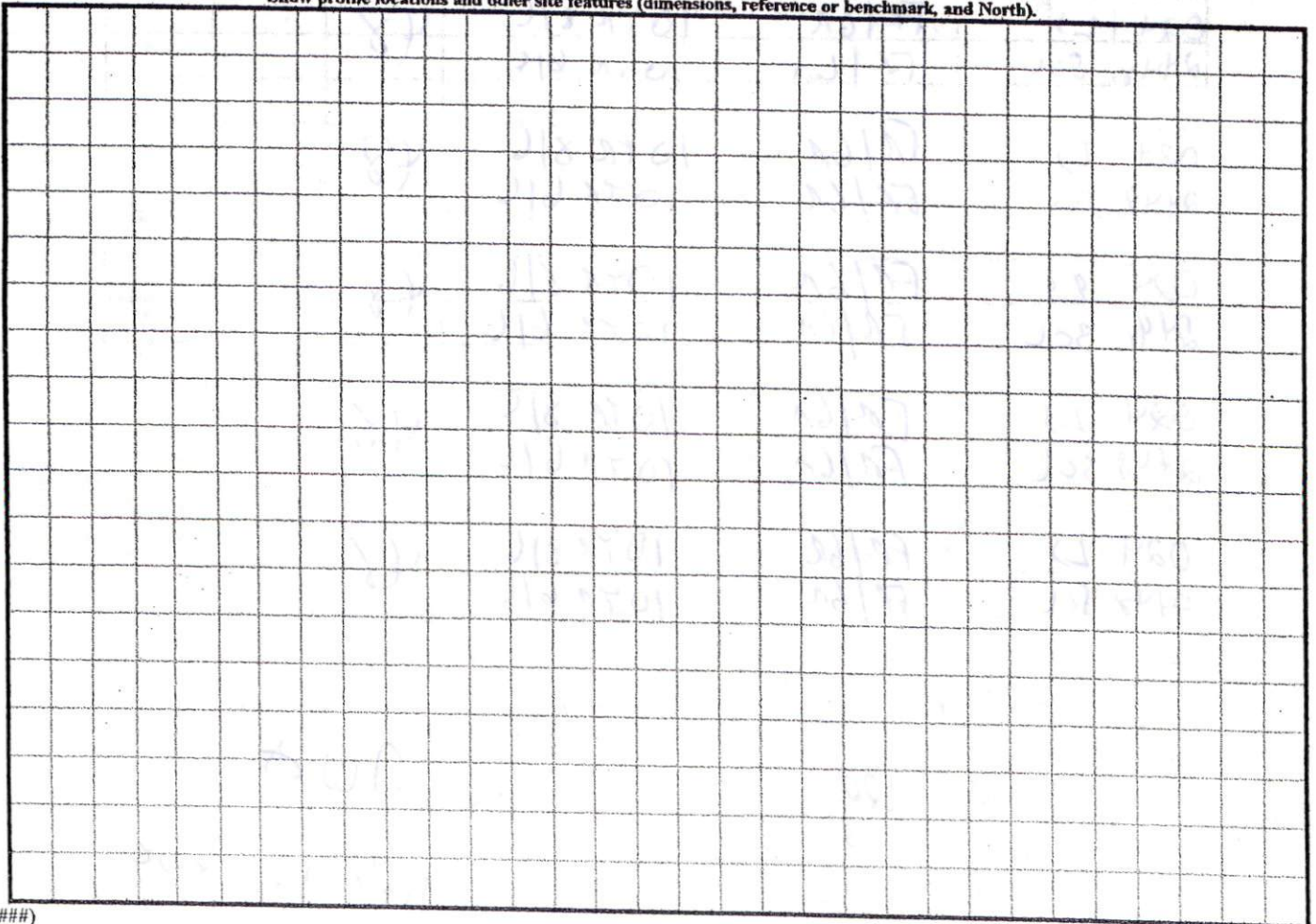
STRUCTURE

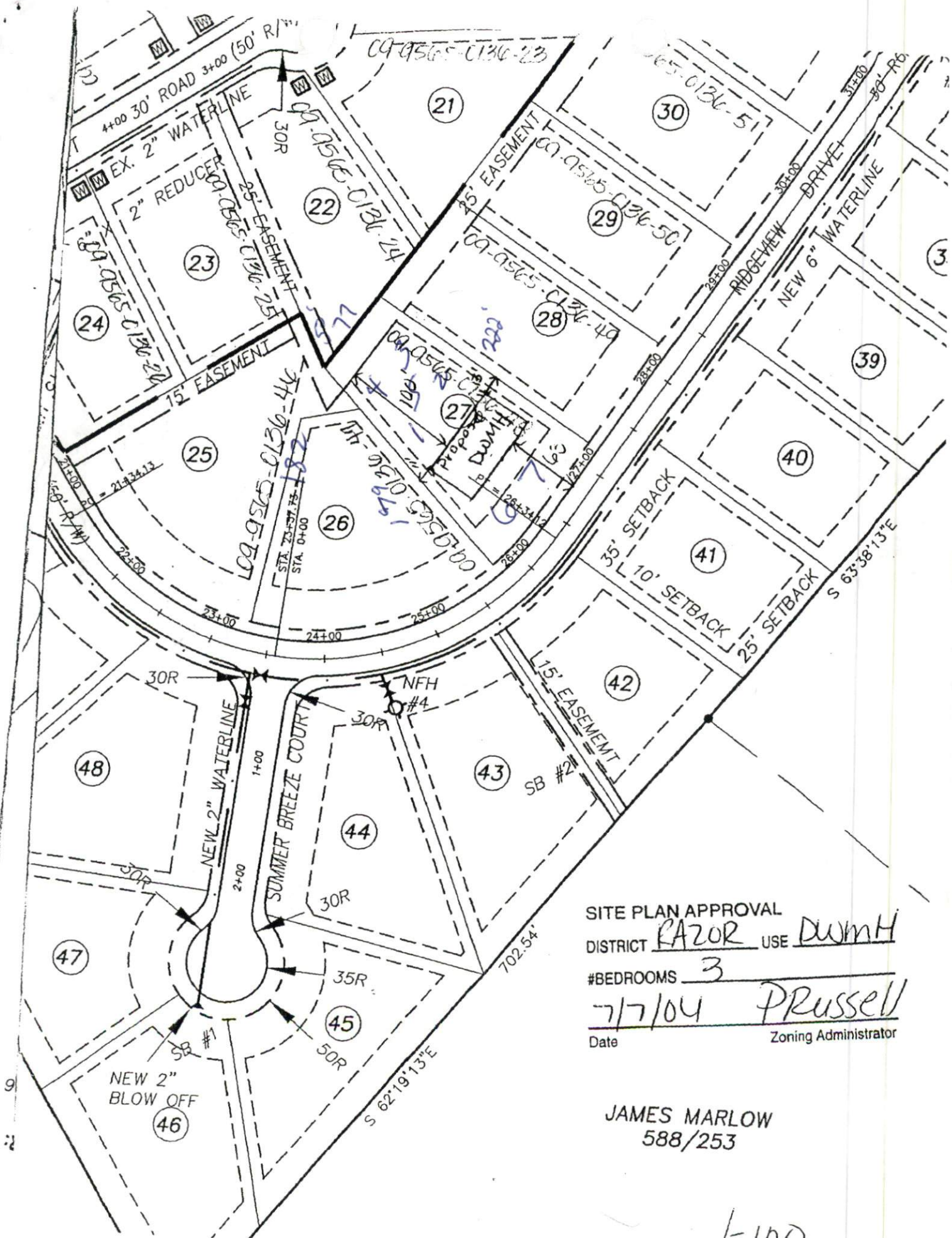
- SG-SINGLE GRAIN
- M-MASSIVE
- CR-CRUMB
- GR-GRANULAR
- SBK-SUBANGULAR BLOCKY
- ABK-ANGULAR BLOCKY
- PL-PLATY
- PR-PRISMATIC

MINERALOGY

- SLIGHTLY EXPANSIVE
- EXPANSIVE

Show profile locations and other site features (dimensions, reference or benchmark, and North).





1=100

1 x 200
17.24
Mechanik
108 Lc 136
To seal
out 1
pin

