

# SITE/SOIL EVALUATION FOR ON-SITE WASTEWATER

APPLICANT NAME \_\_\_\_\_




DATE \_\_\_\_\_

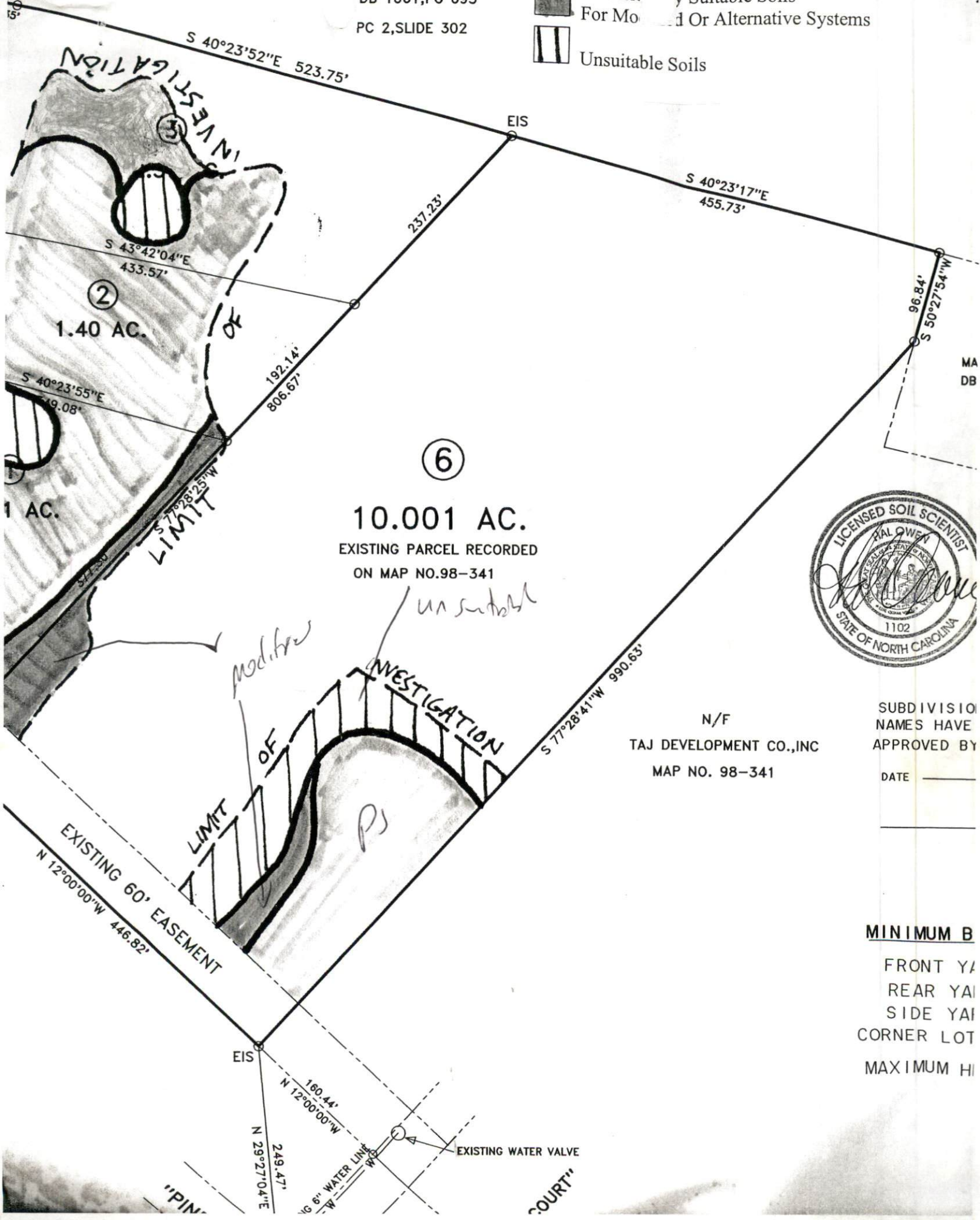
FACTORS		PROFILES													
		1	2	3	4	5	6	7	8	9	10				
LANDSCAPE POSITION	.1940														
SLOPE (%)	.1940														
HORIZON 1 DEPTH		0-8	→		0-18	→					0-8	→			
Texture Group	.1941(A)(1)	LS			LS						LS				
Consistence	.1941														
Structure	.1941(A)(2)														
Mineralogy	.1941(A)(3)														
HORIZON 2 DEPTH		8-24	→		18-36	→					8-24	→			
Texture Group	.1941(A)(1)	SCL			SCL						SCL				
Consistence	.1941														
Structure	.1941(A)(2)														
Mineralogy	.1941(A)(3)														
HORIZON 3 DEPTH		24-36	→		36+	→					24-36	→			
Texture Group	.1941(A)(1)	SC			SC						SC				
Consistence	.1941														
Structure	.1941(A)(2)														
Mineralogy	.1941(A)(3)														
HORIZON 4 DEPTH															
Texture Group	.1941(A)(1)														
Consistence	.1941														
Structure	.1941(A)(2)														
Mineralogy	.1941(A)(3)														
SOIL WETNESS	.1942														
RESTRICTIVE HORIZON	.1944														
SAPROLITE	.1943/.1956														
CLASSIFICATION	.1948														
LONG TERM ACCEPTANCE RATE	.1955	.3	.3	.3	.5	→					.3	→			

2  
3  
1x400  
18" MAX

NAIL IN  
ROCK PILE

KENNETH P. HOOTS  
DB 1061, PG 695  
PC 2, SLIDE 302

-  Provisionally Suitable Soils
-  Provisionally Suitable Soils For Modified Or Alternative Systems
-  Unsuitable Soils



N/F  
TAJ DEVELOPMENT CO., INC  
MAP NO. 98-341

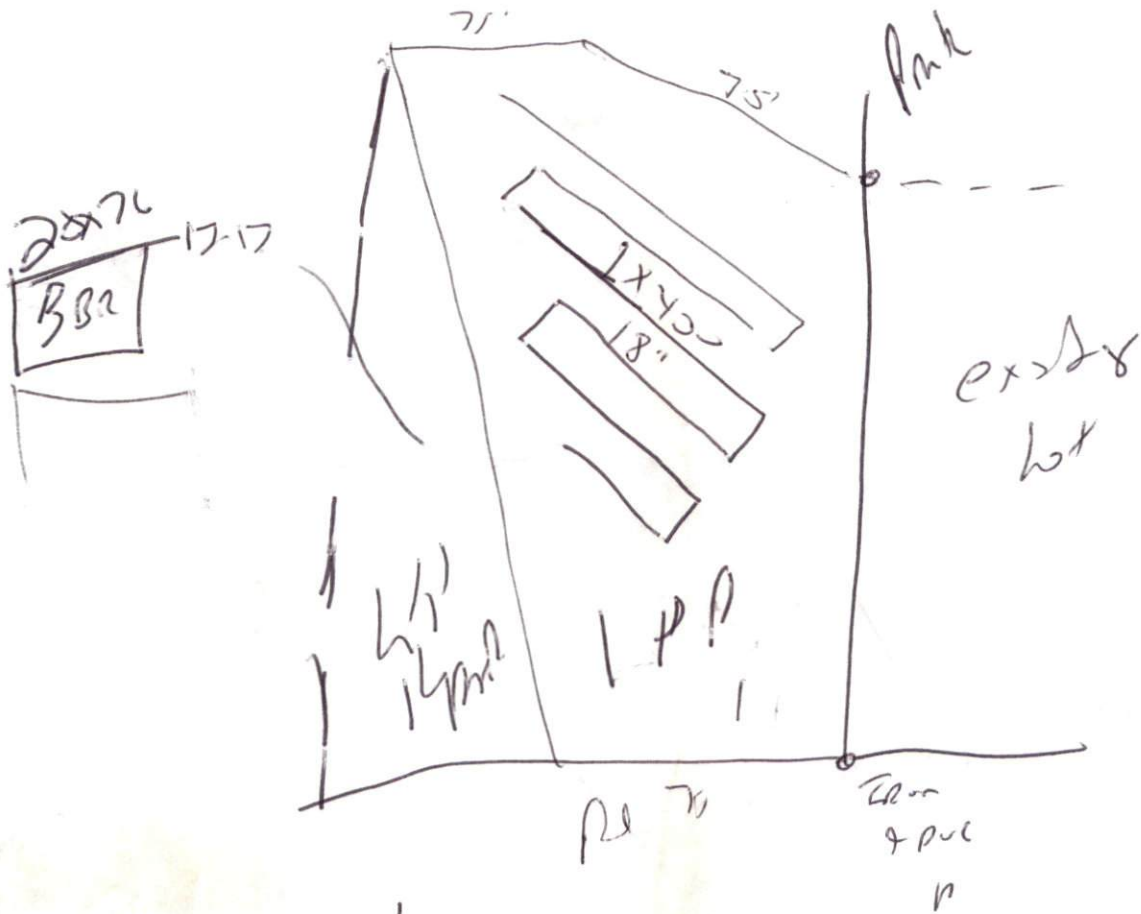
SUBDIVISION  
NAMES HAVE  
APPROVED BY  
DATE \_\_\_\_\_

**MINIMUM B**  
FRONT Y/  
REAR YAI  
SIDE YAI  
CORNER LOT  
MAXIMUM HI

EXISTING 60' EASEMENT  
N 12°00'00"W 446.82'

EIS  
160.44'  
N 12°00'00"W  
249.47'  
N 29°27'04"E  
EXISTING WATER VALVE  
"PIN"  
"COURT"

0



need  
 on it  
 0 red  
 channel  
 may be  
 ask to  
 fix  
 rows of not  
 need  
 pump.