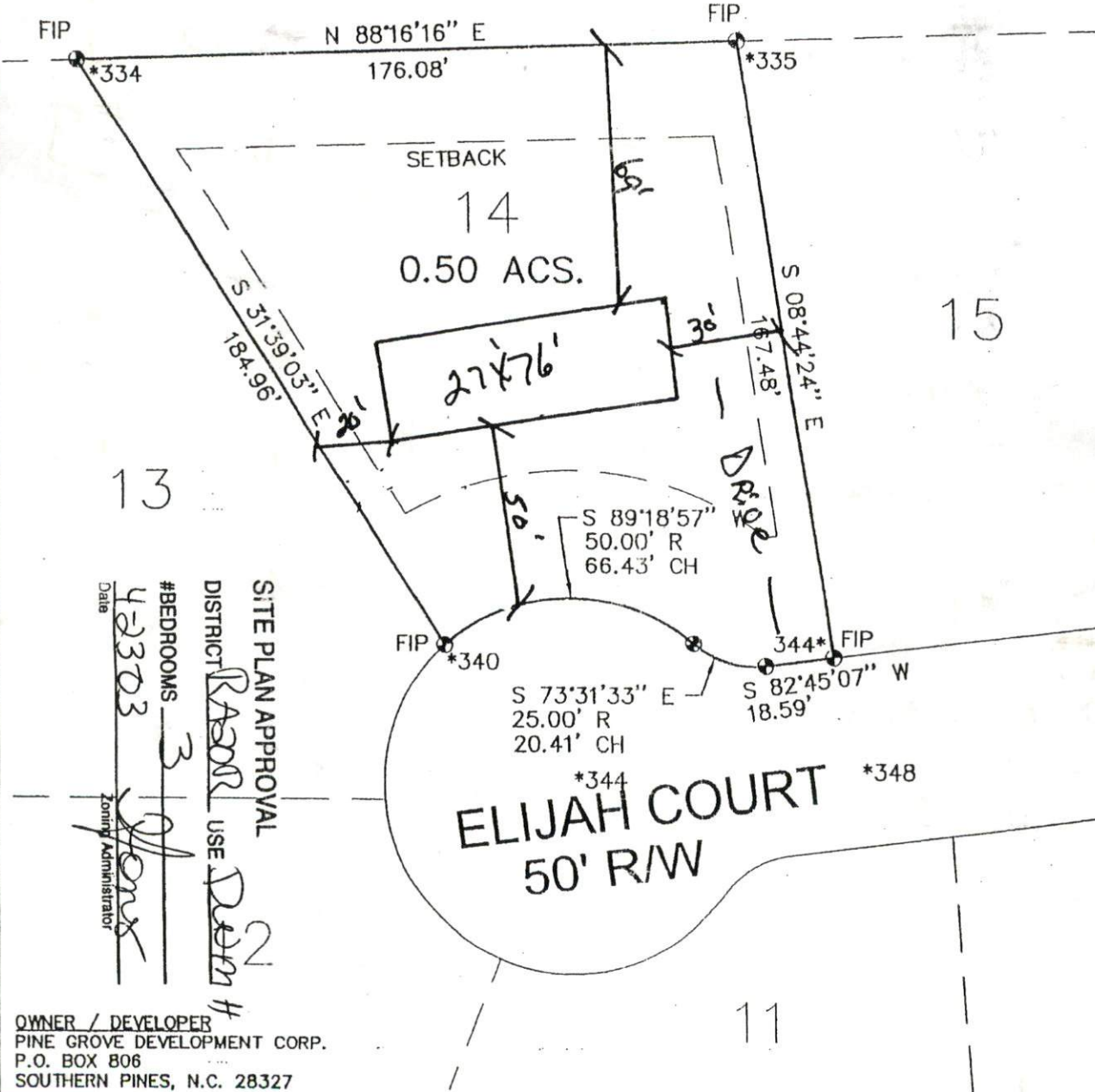


HP: 5356

16



SITE PLAN APPROVAL
DISTRICT RA200R USE DEM #2
#BEDROOMS 3
Date 4-23-03
Zoning Administrator [Signature]

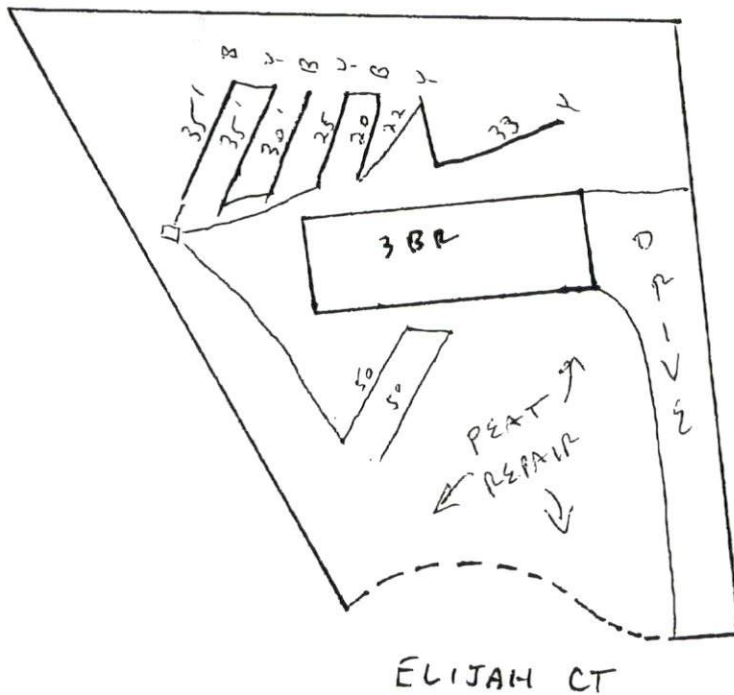
OWNER / DEVELOPER
PINE GROVE DEVELOPMENT CORP.
P.O. BOX 806
SOUTHERN PINES, N.C. 28327

NOTE: BEING ALL OF LOT #14 OF WOODBRIDGE SUBDIVISION PHASE 2 RECORDED IN 2003/ - HARNETT CO. REG.	LEGEND	FIP SIP R/W PP *	FOUND IRON PIPE SET IRON PIPE RIGHT OF WAY POWER POLE ELEVATIONS	I FURTHER CERTIFY THAT THIS PROPERTY (DOES NOT) LIE WITHIN A SPECIAL FLOOD HAZARD AREA AS DESIGNATED BY FIRM FLOOD INSURANCE
	DATE: APRIL 02, 2003	PLOT PLAN		LOT 14
SCALE: 1" = 40'	TOWNSHIP: JOHNSONVILLE		WOODBRIDGE PHASE 2	
HARNETT CO. N.C.				

Southeastern Soil & Environmental Associates, Inc.

P.O. Box 9321
Fayetteville, NC 28311
Phone/Fax (910) 822-4540

WOODBRIERE
PHASE 2
LOT 14



- * 3 x 100' ALTERNATIVE (INFILTRATOR SIDEWINDER) WARRANTY AVAILABLE
- * Proposed with pump to d-box. If proper fall cannot be maintained a pressure MANIFOLD will BE DESIGNED
- * PEAT PRETREATMENT WILL BE REQUIRED FOR REPAIR SYSTEM
- * 6 INCH COVER (1F" INSTALLATION)

1" = 50'

INFILTRATOR[®]
SYSTEMS INC*Environmental Onsite Wastewater SolutionsSM*

May 9, 2002

Dear Septic Professional:

I'm pleased to announce that the North Carolina Department of Environment and Natural Resources has granted a revised approval of the Standard SideWinder[®] Chamber from Infiltrator Systems allowing a 35% reduction in drainfield area. An additional benefit to this new approval requires that all SideWinder installations be warranted by Infiltrator Systems, Inc. for five years.

The Standard SideWinder Chamber replaces old-fashioned stone and pipe leachfields and installs in 3-foot wide trenches. The chamber is 6.25 feet long, 34 inches wide with a continuous louvered sidewall that allows maximum infiltrative capacity. Infiltrator chambers are molded of PolyTuff[™], a proprietary blend of polyolefin plastic that includes recycled resins, and is formulated for optimum strength and chemical resistance.

Infiltrator chambers are the industry's choice for handling septic effluent. In just 15 years, these innovative leaching chambers have drastically changed the technology of onsite septic and stormwater disposal. More than 1,000,000 Infiltrator chamber systems have been installed (and counting) with more than 22 million chambers in ground in all 50 states and thirteen other countries throughout the world.

Additional Benefits:

- The Standard SideWinder Chamber is rated with a 35% reduction in drainfield
- The Standard SideWinder chamber is rated at 4.61 square feet of effective area per foot
- All Standard SideWinder installations are warranted by Infiltrator Systems, Inc. for five years
- The Standard SideWinder SC Chambers available for Shallow Cover installations (min. 6" of cover)
- Stone and geotextile not required for installation
- Faster easier installations make for more profit on every job

The Equalizer[®] 36 Chamber approval remains unchanged. The chamber can be placed in a 2-foot wide trench seven-foot on center with the same rating as a 3-foot wide gravel and pipe system. The Equalizer 36 is well suited for sites with sandy conditions or contours.

For more information on this revised approval and the five-year warranty contact your local distributor or Infiltrator Systems at 1-888-615-3918. Infiltrator is pleased to introduce the Infiltrator Systems North Carolina Design Manual. This information packed manual will help all septic professionals. Call 1-888-615-3918 or e-mail ncdesign@infiltratorsystems.net to request your copy.

Sincerely,



Ford Goudey
Area Sales Manager

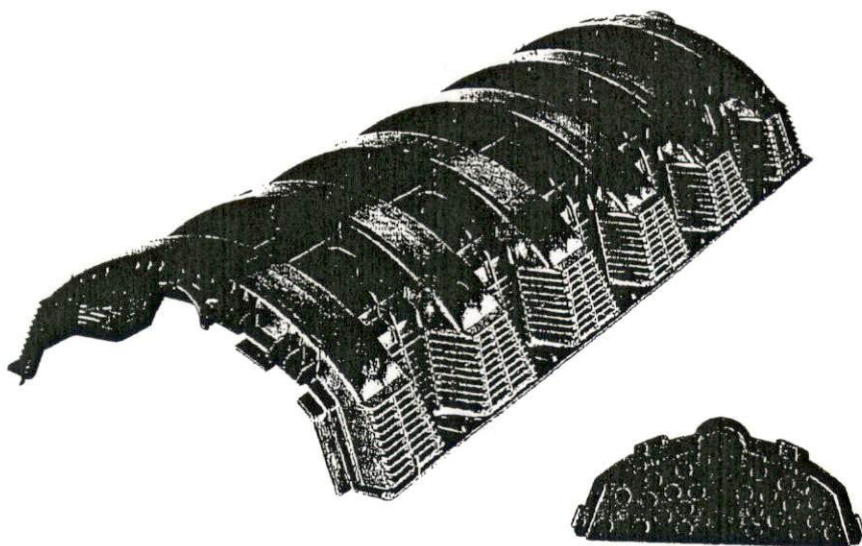
Enclosures: North Carolina Five Year Limited Warranty
Infiltrator Chamber North Carolina Sizing Chart
North Carolina Department of Environment and Natural Resources, Innovative
Wastewater System Approval, IWWS-93-2-R5

Corporate Office

P.O. Box 768 • 6 Business Park Road • Old Saybrook, CT 06475 • (860) 577-7000 • Fax (860) 577-7001

The Standard
SideWinder®
 Chamber

INFILTRATOR®
 SYSTEMS INC
 Environmental Onsite Wastewater Solutions™



The Standard SideWinder Chamber is a low-profile unit with a 6" sidewall. It features the revolutionary, patented SideWinder technology to deliver additional infiltrative surface area per linear foot. It is ideal for areas where chambers with a smaller footprint are desired and offers easy transport, handling and storage. With 12" of compacted cover, it supports 16,000 lbs/axle, equivalent to an H-10 AASHTO rating.

The Standard SideWinder Chamber System Offers You These Unique Benefits:

- Optimum infiltrative efficiency in a compact design
- Easy assembly and installation with as few as two people
- Lightweight chambers that can be delivered in one pickup truck load and hand-carried into position
- Inspection port option for easy access to leachfield with no site disruption
- Solid-topped chambers that need no geotextile
- **OVERALL REDUCED COST**

Tested and Proven with More than 600,000 Installed

- Infiltrator is the number-one septic leachfield chamber system in the onsite industry.
- More than 600,000 systems (and counting) have been installed, with more than 20 million units in-ground in all 50 states and 13 countries.
- Infiltrator's established history of performance and reliability began in 1987.
- Field surveys of septic system performance and failure rates show Infiltrator chamber systems are measurably more resistant to hydraulic failure than stone and pipe systems.

Approved in _____

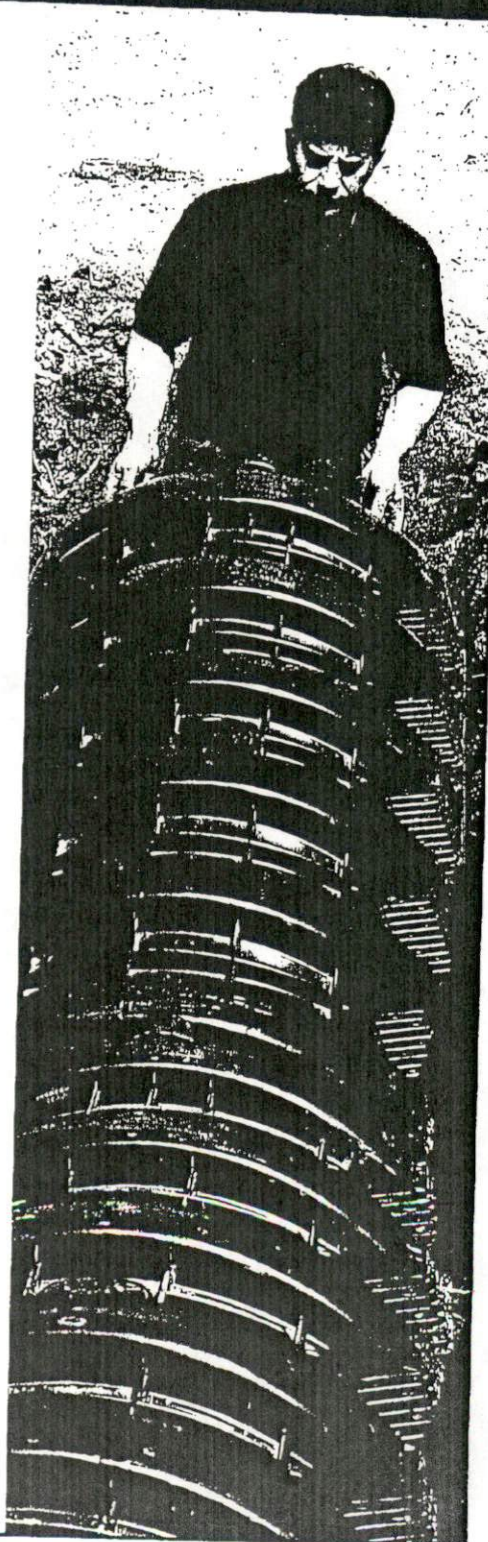


Table III

Product	Excavated Trench Width (inch)	Equivalency Factor (SF/LF)
Standard (polyethylene)	36	4.00
Standard SC (polypropylene)	36	4.00
Standard Sidewinder (polyethylene)	36	4.61 (Warranty System)*
		4.00
Standard Sidewinder SC (polypropylene)	36	4.61 (Warranty System)*
		4.00
High Capacity (polyethylene)	36	4.00
High Capacity SideWinder (polyethylene)	36	4.00
Equalizer 36 (polyethylene)	24	3.00

*System sizing approval based on provision of manufacturer's warranty, as required by Section 2.4, Session Law 2001-505 (House Bill 1019), effective December 19, 2001. Requirements specific to Warranty Systems are detailed in Section VIII, below

EXAMPLE:

Assume: Three bedroom residence with a design daily sewage flow of 360 gallons on a sandy clay loam (Group III) soil.

Then: Total computed trench bottom area is:
 $360 \text{ gpd} / 0.5 \text{ LTAR} = 720 \text{ ft}^2$;

The required linear footage for Standard Infiltrator Systems is:
 $720 \text{ ft}^2 / 4.0 \text{ ft} = 180 \text{ linear ft.}$

(Where 4.0 ft. is the equivalency factor for the Standard Infiltrator chamber system)

- d. The minimum area (without reduction or equivalency factor) for a bed system shall be determined as required in 15A NCAC 18A .1955(d) except that the chambers shall be placed in rows next to each other.