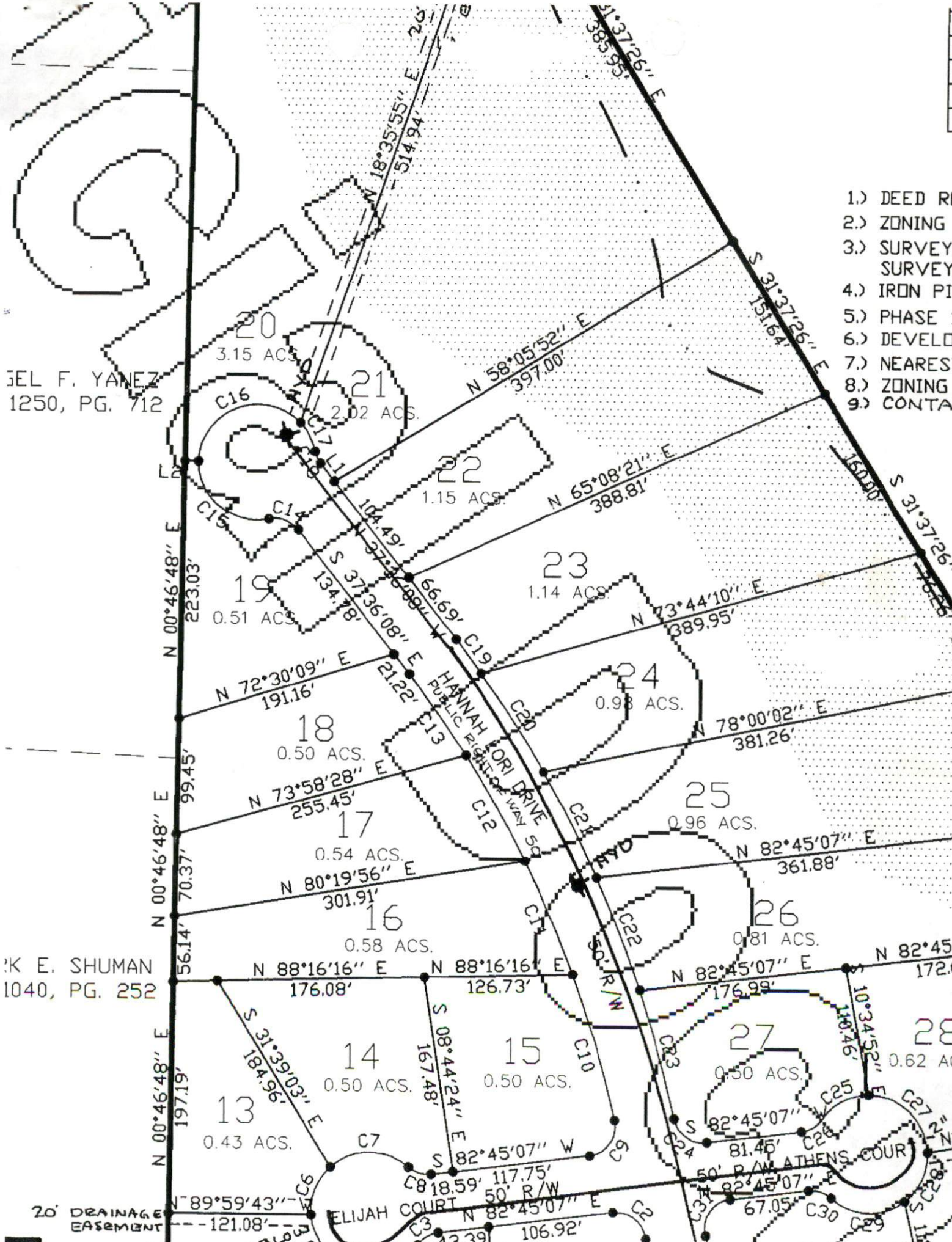


SITE/SOIL EVALUATION FOR ON-SITE WASTEWATER

APPLICANT NAME _____

FACTORS		PROFILES												
		1	2	3	4	5	6	7	8	9	10			
LANDSCAPE POSITION	.1940													
SLOPE (%)	.1940													
HORIZON 1 DEPTH		0-18	—————											
Texture Group	.1941(A)(1)	CL												
Consistence	.1941													
Structure	.1941(A)(2)													
Mineralogy	.1941(A)(3)													
HORIZON 2 DEPTH		18-26	—————											
Texture Group	.1941(A)(1)	SCL												
Consistence	.1941													
Structure	.1941(A)(2)													
Mineralogy	.1941(A)(3)													
HORIZON 3 DEPTH		26-36	—————											
Texture Group	.1941(A)(1)	SL												
Consistence	.1941													
Structure	.1941(A)(2)													
Mineralogy	.1941(A)(3)													
HORIZON 4 DEPTH														
Texture Group	.1941(A)(1)													
Consistence	.1941													
Structure	.1941(A)(2)													
Mineralogy	.1941(A)(3)													
SOIL WETNESS	.1942							28	26	28	30	24		
RESTRICTIVE HORIZON	.1944													
SAPROLITE	.1943/.1956													
CLASSIFICATION	.1948													
LONG TERM ACCEPTANCE RATE	.1955	.35	—————											

L1A2
 .35
 1x350
 18" max



- 1.) DEED RE
- 2.) ZONING
- 3.) SURVEY
- 4.) IRON PIF
- 5.) PHASE 1
- 6.) DEVELOP
- 7.) NEAREST
- 8.) ZONING
- 9.) CONTAI

JEL F. YANEZ
1250, PG. 712

MARK E. SHUMAN
1040, PG. 252

20' DRAINAGE
EASEMENT

20
3.15 ACS.

21
2.02 ACS.

19
0.51 ACS.

18
0.50 ACS.

17
0.54 ACS.

16
0.58 ACS.

13
0.43 ACS.

14
0.50 ACS.

15
0.50 ACS.

23
1.14 ACS.

24
0.98 ACS.

25
0.96 ACS.

26
0.81 ACS.

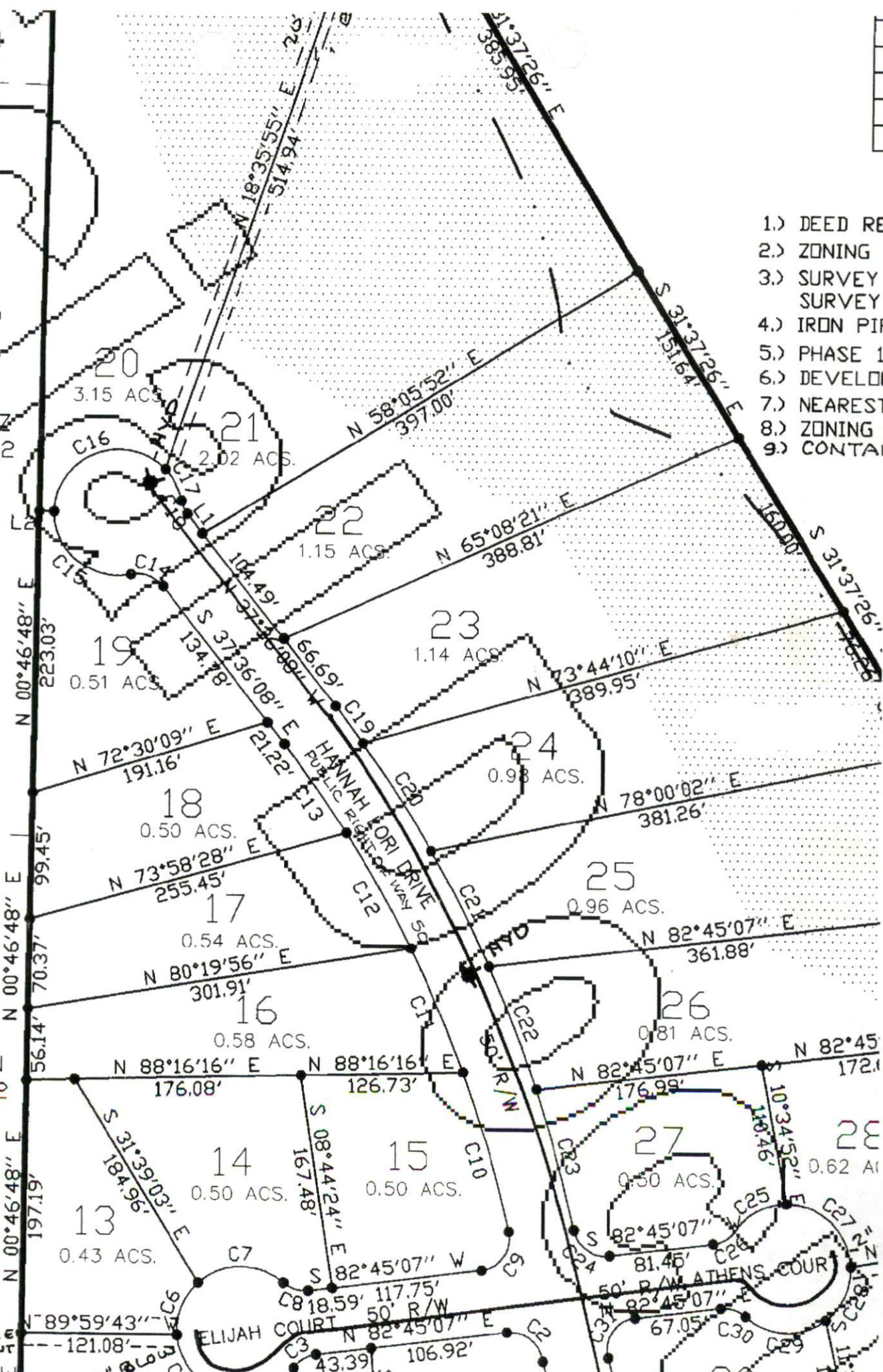
27
0.50 ACS.

28
0.62 ACS.

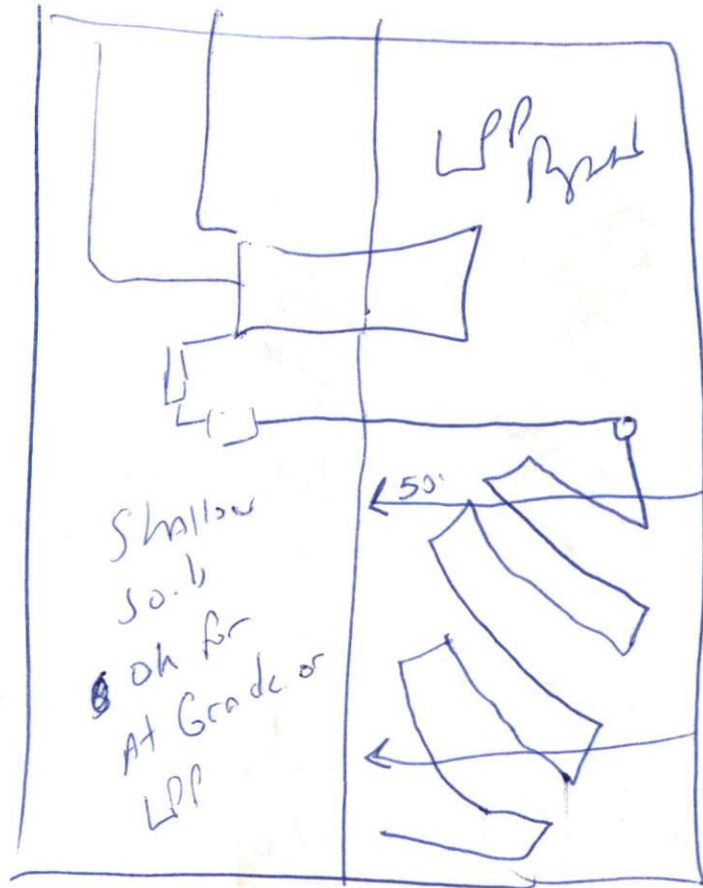
ELIJAH COURT
50' R/W

ATHENS COURT
50' R/W

HANNAH LORI DRIVE
PUBLIC RIGHT-OF-WAY 50'



R2



94

1 x 350

18" max

max on st