

(18)

0.530 AC.

(19)

0.515 AC.

16

15

17

18

19

(21)

0.488 AC.

(22)

0.534 AC.

(30)

(29)

(28)

44'41"W
180.00'

S 07°43'33"W
118.29'

31.33'

N 48°25'15"W
149.18'

25' EASEMENT

95.00'

198.38'

N 14°37'08"W

LOT 20
1"=60'

225.00'

N 65°41'41"W

with
C&H

Front
Side
Corner
Rear
Nearest
Building

Actual	108
Minimum	535
10	20
25	20
10	20

Required Property Line Setback

N 45°36'44"E
198.95'

S 53°21'20"N
188.85'

40.00'

50' R

COURT

(50' R/W)

125.00'

37'00"W
7'00"E

338.09
43'37'00"E

125.00'

60.00'

N 42°31'00"E
179.57'

S 53°30'46"W
200.88'

250.00'

N 50°33'0"
361

SITE PLAN APPROVAL
DISTRICT R.R. ZDR USE D.C. 2008

#BEDROOMS 3

Date 08/14/08

Zoning Administrator

[Handwritten signature]

SCALE 1" = 50'

1X320
18.24

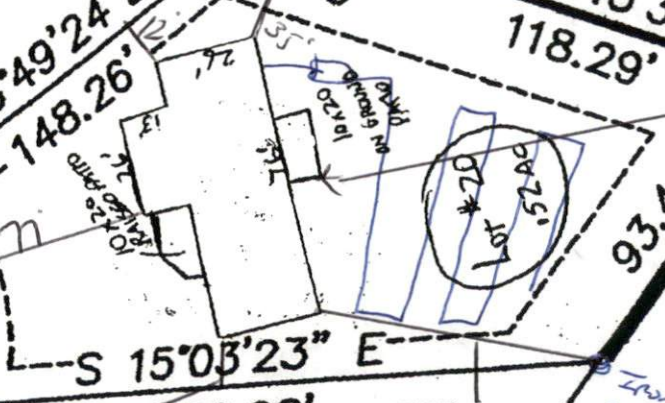
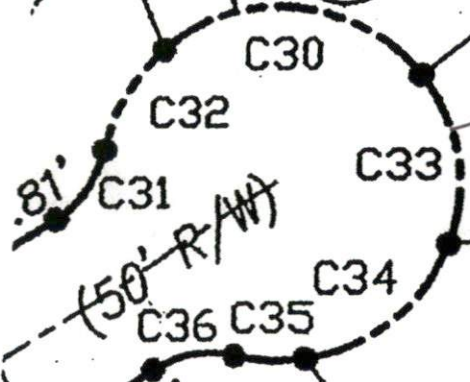
15'42"E
02'
N07°44'41"E
178.34'

25' SETBACK
22,381 sq.ft.
0.51 acres

S48°49'24"E
148.26'

33.00'
N 07°43'33"E
118.29'

19



21,894 sq.ft.
0.50 acres

21

30

44.12'
25' EASEMENT
22,806 sq.ft.
0.52 acres

22

S 41°26'45" W
177.27'

227.53'
459.28'
25' EASEMENT

29

23
3,997 sq.ft.
0.55 acres

23

S43°37'01"E
13.93'
S53°20'31"W
50.41'

27

28

PLAN APPROVAL
DISTRICT BOARD
#BEDROOMS 4
DATE 10/13/04
USE TOWNH
A. DIACOLA
Zoning Administrator
10/13/04