

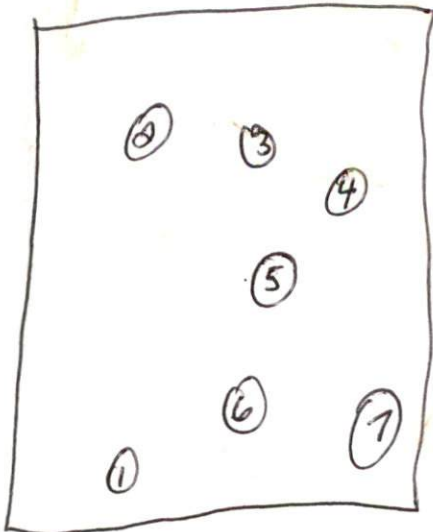
SITE/SOIL EVALUATION FOR ON-SITE WASTEWATER

APPLICANT NAME _____

DATE _____

FACTORS		PROFILES												
		1	2	3	4	5	6	7	8	9	10			
LANDSCAPE POSITION	.1940													
SLOPE (%)	.1940													
HORIZON 1 DEPTH		0-18	0-12	0-12	0-12	0-12	0-12	0-3						
Texture Group	.1941(A)(1)	LS	LS	LS	LS	LS	LS	LS						
Consistence	.1941	fr	fr	fr	fr	fr	fr	fr						
Structure	.1941(A)(2)	Gr	Gr	Gr	Gr	Gr	Gr	Gr						
Mineralogy	.1941(A)(3)	NEXP	NEXP	NEXP	NEXP	NEXP	NEXP	NEXP						
HORIZON 2 DEPTH		18-42	12-30	12-30	12-30	12-30	12-32	3-34						
Texture Group	.1941(A)(1)	Clay/Gravel	CL/gravel	CL/gravel	Clay	CL/clay	CL/clay	CL/clay						
Consistence	.1941	fr	fr	fr	fr	fr	fr	fr						
Structure	.1941(A)(2)	SAB/SP	SAB/SS	SAB/SP	SAB/S	SAB/SP	SAB/SP	SAB/SP						
Mineralogy	.1941(A)(3)	SEXP	SEXP	SEXP	SEXP	SEXP	SEXP	SEXP						
HORIZON 3 DEPTH														
Texture Group	.1941(A)(1)													
Consistence	.1941													
Structure	.1941(A)(2)													
Mineralogy	.1941(A)(3)													
HORIZON 4 DEPTH														
Texture Group	.1941(A)(1)													
Consistence	.1941													
Structure	.1941(A)(2)													
Mineralogy	.1941(A)(3)													
SOIL WETNESS	.1942													
RESTRICTIVE HORIZON	.1944		30" cement gravel	30"	30"	30"	32"	34"						
SAPROLITE	.1943/.1956													
CLASSIFICATION	.1948													
LONG TERM ACCEPTANCE RATE	.1955													

cement gravel cement gravel cement gravel cement gravel cement gravel



651-721

N 27°52'10" W
81.08'

N 27°52'10" W 358.74'

N 24°15'53" W
71.44'

(5) N 64°51'21" E
N 24°15'53" W
72.12'

NET 0.840 AC
R/W 0.071 AC
TOT 0.911 AC

NET 1.238 AC
R/W 0.105 AC
TOT 1.343 AC

NET 1.220 AC
R/W 0.102 AC
TOT 1.322 AC

NET 1.327 AC
R/W 0.110 AC
TOT 1.437 AC

NET 1.180 AC
R/W 0.102 AC
TOT 1.282 AC

NET 1.180 AC
R/W 0.102 AC
TOT 1.282 AC

256.80'

S 25°08'39" E

5' EASEMENT FOR
UTILITY CONST. (TYP)

REC
TO

L=
R=2

N 65°06'35" E

RIVERKNOLL WAY

(B) N 65°06'35" E 174.89'
R=25.00'
L=21.03'
R=5'
L=5'
TOTAL 0.641 AC

N 64°51'21" E - 200.00'

TOTAL 0.644 AC

N 64°51'21" E - 200.00'

TOTAL 0.644 AC

N 64°51'21" E - 200.00'

TOTAL 0.644 AC

N 64°51'21" E - 200.00'

TOTAL 0.644 AC

N 64°51'21" E - 200.00'

TOTAL 0.644 AC

N 74°28'33" E

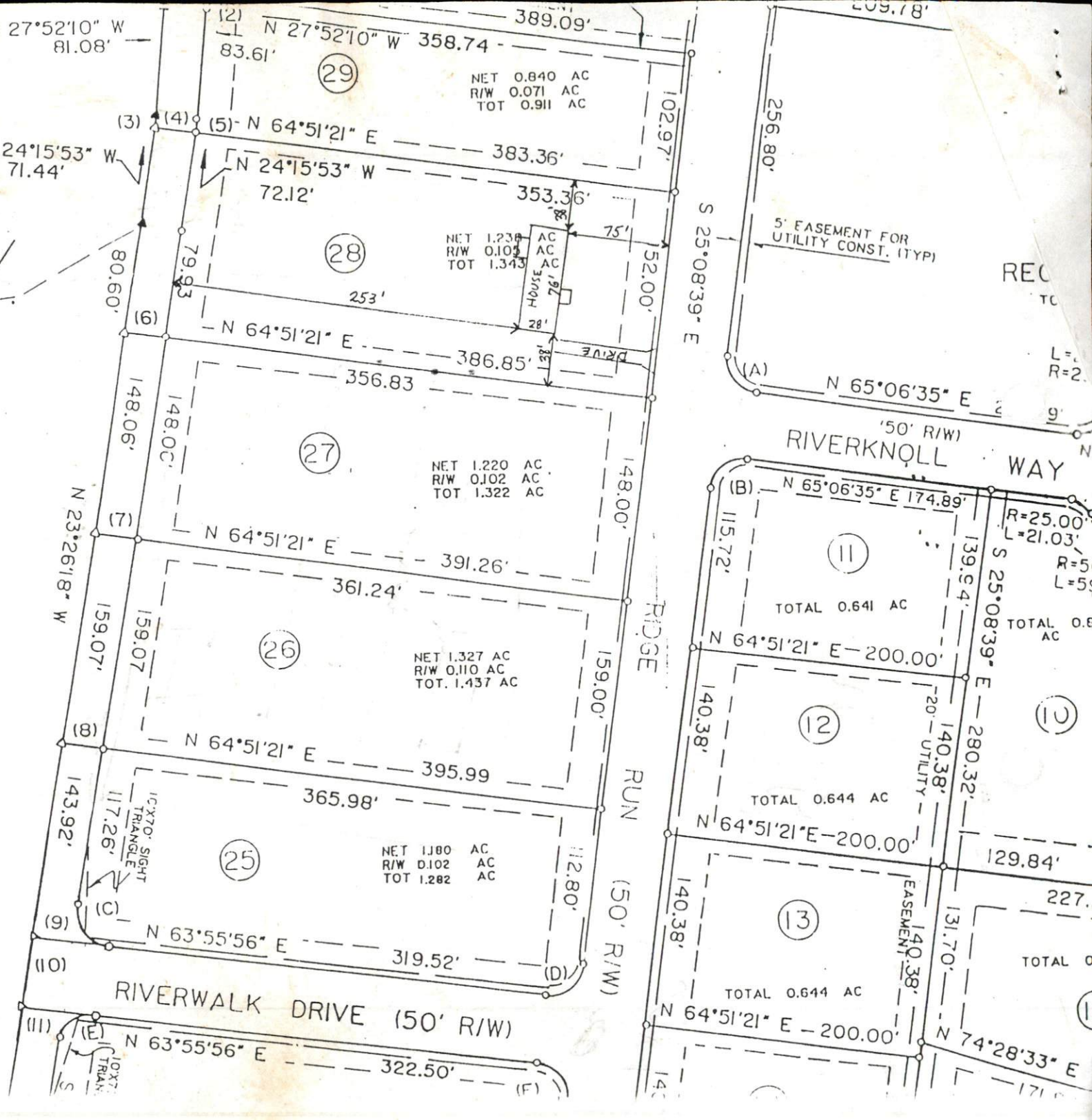
SEE REF. #1

LENGTH CHORD BEARING CHORD DIST.

39.16'	S70 01'02"E	35.28'
39.38'	N19 58'58"E	35.43'
40.42'	N69 45'11"W	36.16'
38.86'	S19 23'39"W	35.07'
38.12'	N20 14'49"E	34.53'
39.67'	S70 36'21"E	35.64'
18.35'	S02 01'01"W	17.94'
145.8'	S73 25'05"E	99.36'
118.50'	N78 00'48"E	92.65'
72.83'	N31 36'28"W	66.56'
21.03'	N49 14'20"W	20.41'
39.30'	N19 53'45"E	35.37'
138.02'	N31 28'57"E	130.31'
53.48'	N14 55'43"W	53.00'
22.12'	N02 31'59"W	21.41'
117.89'	N44 43'29"W	92.42'
72.66'	S26 06'14"W	66.43'
55.03'	S47 03'23"E	52.30'
22.12'	S53 14'12"E	21.41'
118.57'	S18 31'32"W	106.02'
39.25'	N70 06'15"W	35.34'
2.68'	S22 04'40"E	2.67'

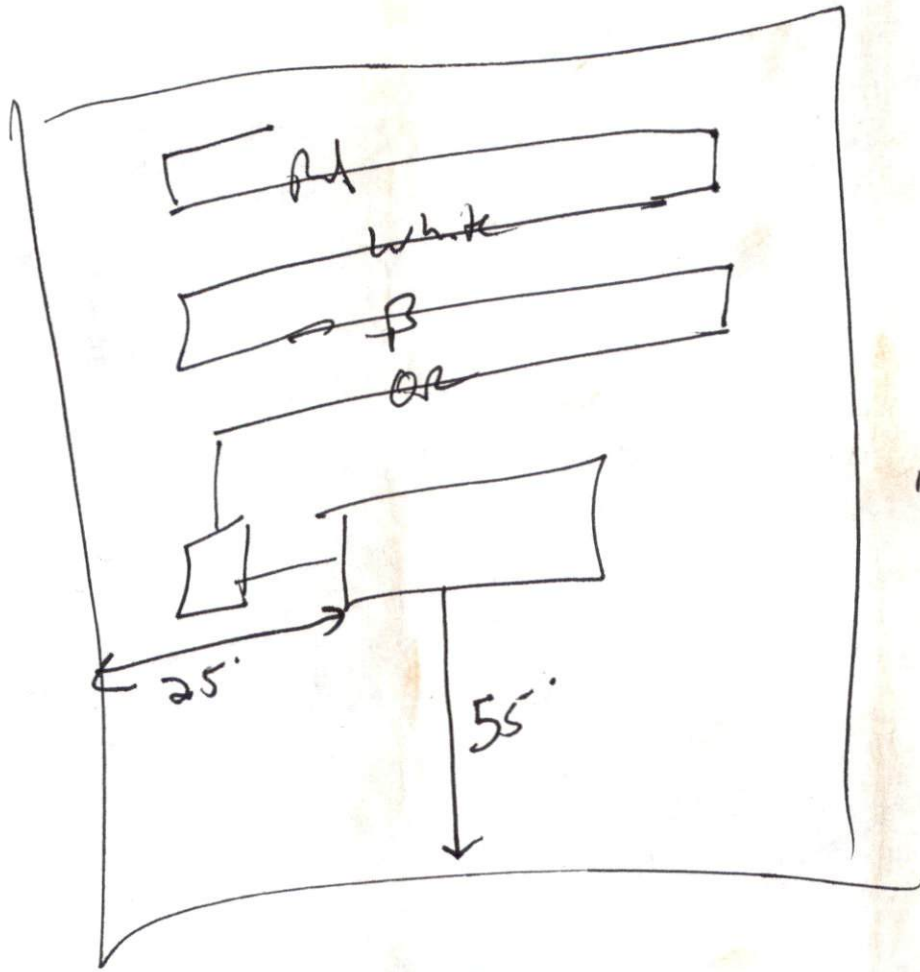
NIF
ACAPULCO, INC.
609-91
ZONE OS

this plat was drawn
supervision) that
that the ratio of
that



18 - MAX

1x600
~~or~~



max
how
forward

R4