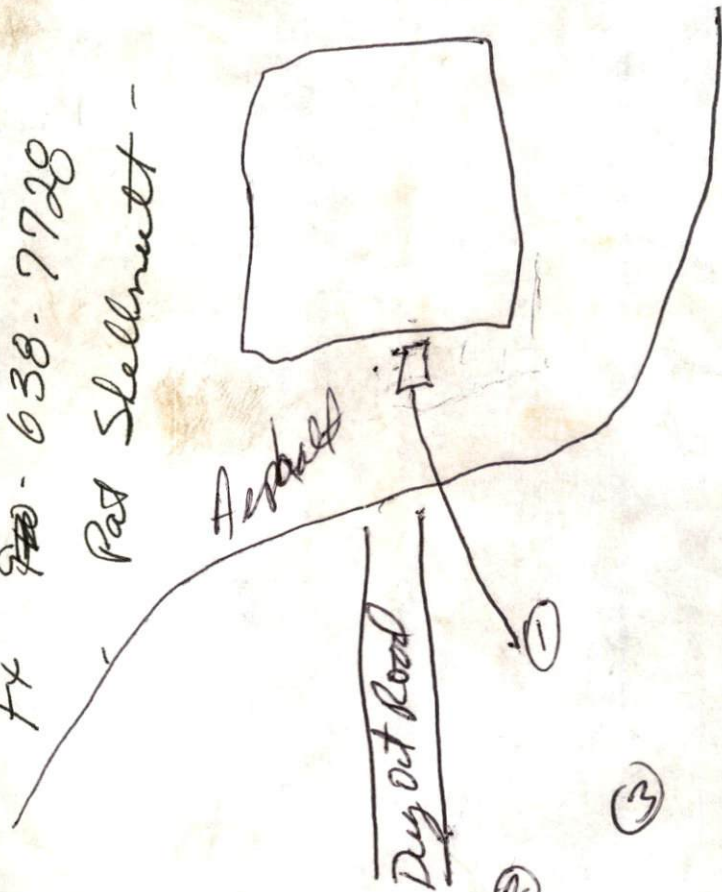


912 970-638-7728
 FX - Pat Stelmutt -



ductile iron
 4" to field
 under asphalt

*Pump required if
 full not achieved

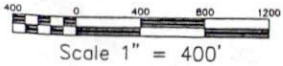
① 0-38 w/sl

①.8

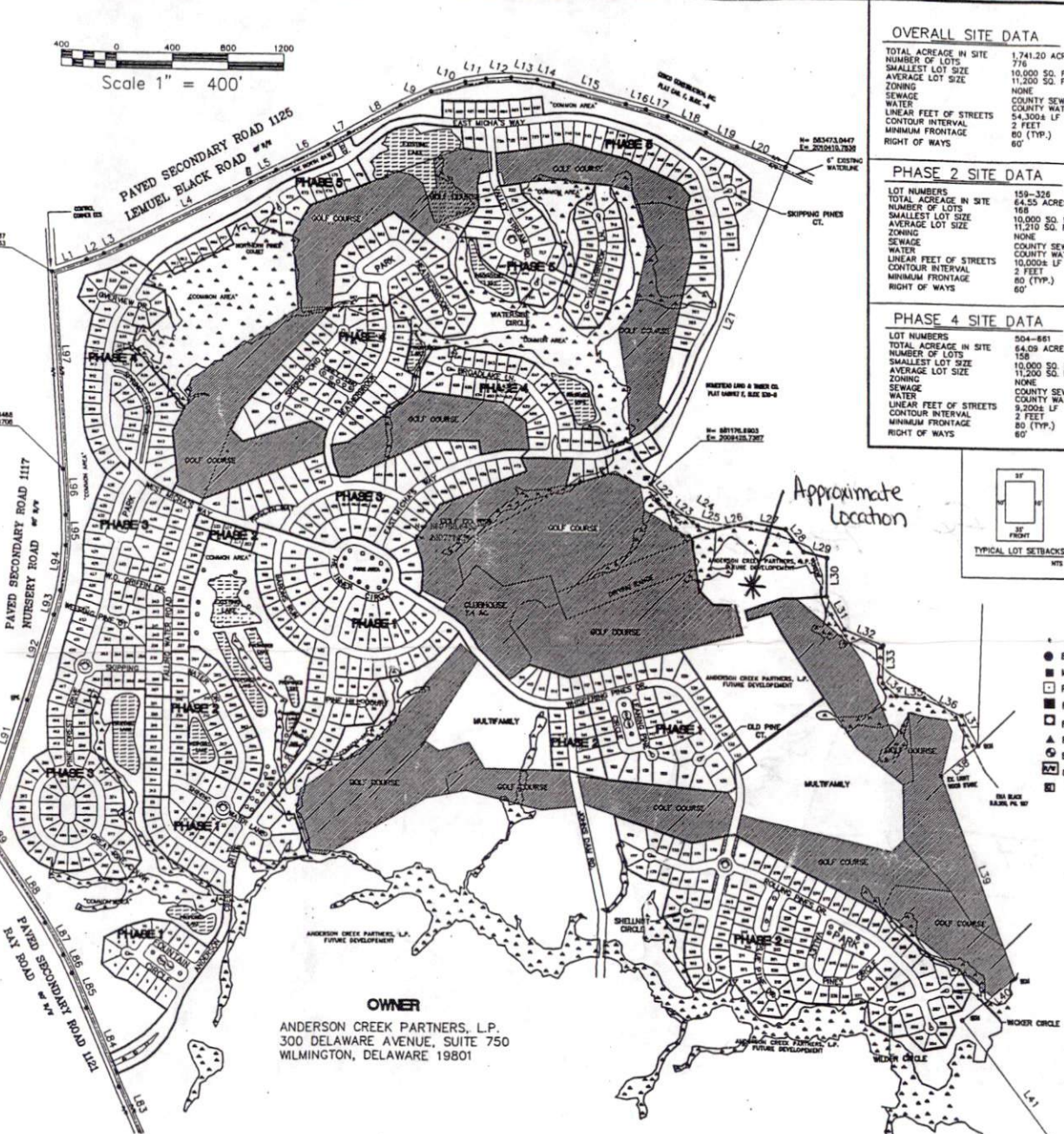
② 0-36 w/sl

③ 0-36 w/sl

meet on-site after
 cleared out
 + installation

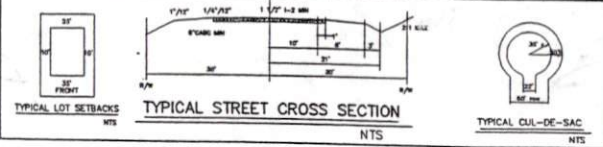


SCALE: 1" = 400'



OWNER
 ANDERSON CREEK PARTNERS, L.P.
 300 DELAWARE AVENUE, SUITE 750
 WILMINGTON, DELAWARE 19801

| OVERALL SITE DATA | | PHASE 1 SITE DATA | |
|------------------------|-------------------------|------------------------|-------------------------|
| TOTAL ACREAGE IN SITE | 1,741.20 ACRES | LOT NUMBERS | 1-158 |
| NUMBER OF LOTS | 776 | TOTAL ACREAGE IN SITE | 78.53 ACRES |
| SMALLEST LOT SIZE | 10,000 SQ. FT. | NUMBER OF LOTS | 158 |
| AVERAGE LOT SIZE | 11,200 SQ. FT. | SMALLEST LOT SIZE | 10,000 SQ. FT. |
| ZONING | NONE | AVERAGE LOT SIZE | 11,225 SQ. FT. |
| SEWAGE | COUNTY SEWER (SEE NOTE) | ZONING | NONE |
| WATER | COUNTY WATER | SEWAGE | COUNTY SEWER (SEE NOTE) |
| LINEAR FEET OF STREETS | 54,300± LF | WATER | COUNTY WATER |
| CONTOUR INTERVAL | 2 FEET | LINEAR FEET OF STREETS | 15,000± LF |
| MINIMUM FRONTAGE | 80 (TYP.) | CONTOUR INTERVAL | 2 FEET |
| RIGHT OF WAYS | 60' | MINIMUM FRONTAGE | 80 (TYP.) |
| | | RIGHT OF WAYS | 60' |
| PHASE 2 SITE DATA | | PHASE 3 SITE DATA | |
| TOTAL ACREAGE IN SITE | 159-326 | LOT NUMBERS | 327-503 |
| NUMBER OF LOTS | 168 | TOTAL ACREAGE IN SITE | 70.59 ACRES |
| SMALLEST LOT SIZE | 10,000 SQ. FT. | NUMBER OF LOTS | 177 |
| AVERAGE LOT SIZE | 11,210 SQ. FT. | SMALLEST LOT SIZE | 10,000 SQ. FT. |
| ZONING | NONE | AVERAGE LOT SIZE | 11,205 SQ. FT. |
| SEWAGE | COUNTY SEWER (SEE NOTE) | ZONING | NONE |
| WATER | COUNTY WATER | SEWAGE | COUNTY SEWER (SEE NOTE) |
| LINEAR FEET OF STREETS | 10,000± LF | WATER | COUNTY WATER |
| CONTOUR INTERVAL | 2 FEET | LINEAR FEET OF STREETS | 10,500± LF |
| MINIMUM FRONTAGE | 80 (TYP.) | CONTOUR INTERVAL | 2 FEET |
| RIGHT OF WAYS | 60' | MINIMUM FRONTAGE | 80 (TYP.) |
| | | RIGHT OF WAYS | 60' |
| PHASE 4 SITE DATA | | PHASE 5 SITE DATA | |
| TOTAL ACREAGE IN SITE | 504-861 | LOT NUMBERS | 662-776 |
| NUMBER OF LOTS | 158 | TOTAL ACREAGE IN SITE | 48.46 ACRES |
| SMALLEST LOT SIZE | 10,000 SQ. FT. | NUMBER OF LOTS | 115 |
| AVERAGE LOT SIZE | 11,200 SQ. FT. | SMALLEST LOT SIZE | 10,000 SQ. FT. |
| ZONING | NONE | AVERAGE LOT SIZE | 11,205 SQ. FT. |
| SEWAGE | COUNTY SEWER (SEE NOTE) | ZONING | NONE |
| WATER | COUNTY WATER | SEWAGE | COUNTY SEWER (SEE NOTE) |
| LINEAR FEET OF STREETS | 9,200± LF | WATER | COUNTY WATER |
| CONTOUR INTERVAL | 2 FEET | LINEAR FEET OF STREETS | 9,600± LF |
| MINIMUM FRONTAGE | 80 (TYP.) | CONTOUR INTERVAL | 2 FEET |
| RIGHT OF WAYS | 60' | MINIMUM FRONTAGE | 80 (TYP.) |
| | | RIGHT OF WAYS | 60' |



LEGEND

- EXISTING IRON PIPE
- MONUMENT SET
- P.K. NAIL FOUND
- P.K. NAIL SET
- R.R. SPIKE FOUND
- ▲ R.R. SPIKE SET
- ▲ BENCHMARK
- CONC. R/W MARKER
- GAS METER
- POWERPOLE
- LIGHT POLE
- STREET LIGHT POLE
- ELECTRIC BOX
- O.H.P. OVERHEAD POWER
- WATER VALVE
- WATER METER
- HYDRANT
- GAS VALVE
- SEWER MANHOLE
- CLEAN OUT
- CURB INLET
- CATCH BASIN
- TELEPHONE BOX
- LAMP POST
- CABLE TV
- LANDSCAPING
- WETLANDS

PRELIMINARY PLAT FOR:
**ANDERSON CREEK GOLF COURSE
 AND COUNTRY CLUB**
 HARNETT COUNTY, N.C.
 SCALE: 1"=400
 DATE: AUGUST 25, 1999
 DEED REF. 1346/98-108

| NO. | DATE | DESCRIPTION |
|-----|------|-------------|
| | | |
| | | |
| | | |
| | | |
| | | |

Hobbs, Upchurch & Associates, P.A.
 Consulting Engineers
 200 S.W. Broad Street, Suite 2030
 Southport, North Carolina 28587
 Phone: (910) 692-5516 - Fax: (910) 692-7342

**ANDERSON CREEK GOLF
 AND COUNTRY CLUB, SUBDIVISION**
 HARNETT COUNTY, NORTH CAROLINA
 LAYOUT PLAN

| | |
|------------|------------------|
| DATE: | 1-21-00 |
| DESIGNED: | BRACKEN & ASSOC. |
| DRAWN: | PSW |
| CHECKED: | PSW |
| SCALE: | NTS |
| SHEET NO.: | 1 |