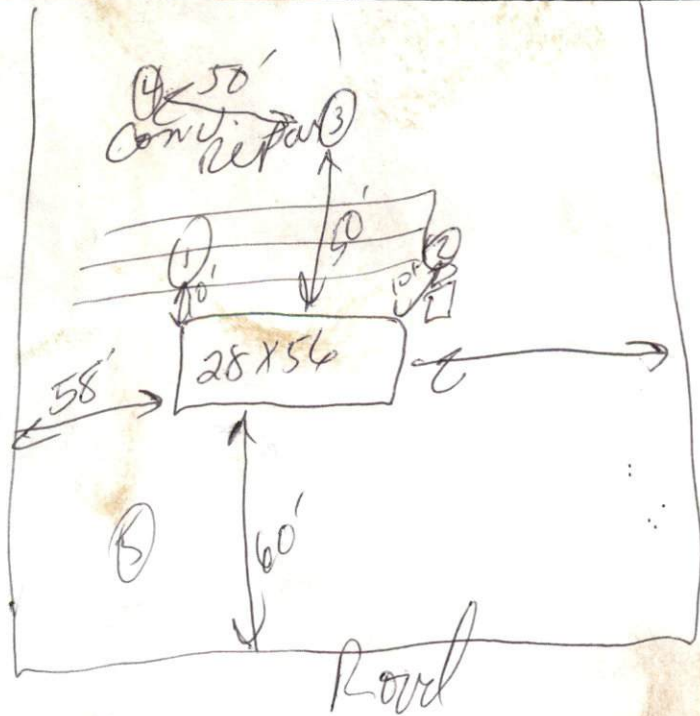


APPLICANT NAME _____

DATE _____

FACTORS		PROFILES								
		1	2	3	4	5	6	7	8	9
LANDSCAPE POSITION	.1940									
SLOPE (%)	.1940									
HORIZON 1 DEPTH		0-26	0-18	0-16	0-30					
Texture Group	.1941(A)(1)	usp	usp	usp	usp					
Consistence	.1941									
Structure	.1941(A)(2)									
Mineralogy	.1941(A)(3)									
HORIZON 2 DEPTH		24-36	18-36	16-38						
Texture Group	.1941(A)(1)	scl	scl	scl						
Consistence	.1941		1H/1/2							
Structure	.1941(A)(2)		spbc							
Mineralogy	.1941(A)(3)									
HORIZON 3 DEPTH										
Texture Group	.1941(A)(1)									
Consistence	.1941									
Structure	.1941(A)(2)									
Mineralogy	.1941(A)(3)									
HORIZON 4 DEPTH										
Texture Group	.1941(A)(1)									
Consistence	.1941									
Structure	.1941(A)(2)									
Mineralogy	.1941(A)(3)									
SOIL WETNESS	.1942		30'	30'						
RESTRICTIVE HORIZON	.1944									
SAPROLITE	.1943/1956									
CLASSIFICATION	.1948	ps	ps	ps	ps					
LONG TERM ACCEPTANCE RATE	.1955	.4	.34	.4	.8					



3x100' lines
at 18"

N.C. HWY 210

FRANCIS L. FREELAND
DB 997, PG 296

RODNEY W. BENNETT
DB 1316 PG 359

N = 171040.357 M
E = 618143.104 M

ROBERTA LEWIS
D.B. 769, PG.123

N/F
GWENDOLYN W. WARRE
AND
CLETA W. RIVES
DB 339, PG 83
PC F, SLIDE 155-C

LOT 1
1.06 ACRES

LOT 2
0.72 ACRES

LOT 6
1.14 ACRES

LOT 3
0.89 ACRES

LOT 5
0.99 ACRES

LOT 4
1.38 ACRES

SOUTH HARNETT LANE
PROPOSED 30' PRIVATE EASEMENT (SEE NOTE 2)

30' EASEMENT (SEE NOTE 1)

EXISTING EASEMENT AS DESCRIBED IN D.B. 1030, PG 721

OVERHEAD POWER

A=77.83'
R=30.00'

A=79.24'
R=30.00'

N 38°05'43"W
57.77'

S 68°05'53"E
58.13'

S 53°08'42"E
169.88'

S 23°15'50"W
206.83'

249.68'

287.57'

223.11'

S 37°34'36"W

N 53°08'42"W

S 43°29'39"W

S 53°08'42"E

N 53°08'42"W

S 37°34'36"W

N 53°08'42"W

S 43°29'39"W

S 53°08'42"E

N 53°08'42"W

S 37°34'36"W

N 53°08'42"W

S 43°29'39"W

S 53°08'42"E

N 53°08'42"W

S 37°34'36"W

N 53°08'42"W

S 43°29'39"W

S 53°08'42"E

N 53°08'42"W

S 37°34'36"W

N 53°08'42"W

S 43°29'39"W

S 53°08'42"E

N 53°08'42"W

S 37°34'36"W

N 53°08'42"W

S 43°29'39"W

S 53°08'42"E

N 53°08'42"W

S 37°34'36"W

N 53°08'42"W

S 43°29'39"W

S 53°08'42"E

N 53°08'42"W

S 37°34'36"W

N 53°08'42"W

S 43°29'39"W

S 53°08'42"E

N 53°08'42"W

S 37°34'36"W

N 53°08'42"W

S 43°29'39"W

S 53°08'42"E

N 53°08'42"W

S 37°34'36"W

N 53°08'42"W

S 43°29'39"W

S 53°08'42"E

N 53°08'42"W

S 37°34'36"W

N 53°08'42"W

S 43°29'39"W

S 53°08'42"E

N 53°08'42"W

S 37°34'36"W

N 53°08'42"W

S 43°29'39"W

S 53°08'42"E

N 53°08'42"W

S 37°34'36"W

N 53°08'42"W

S 43°29'39"W

S 53°08'42"E

N 53°08'42"W

S 37°34'36"W

N 53°08'42"W

S 43°29'39"W

S 53°08'42"E

N 53°08'42"W

S 37°34'36"W

N 53°08'42"W

S 43°29'39"W

S 53°08'42"E

N 53°08'42"W

S 37°34'36"W

N 53°08'42"W

S 43°29'39"W

S 53°08'42"E

N 53°08'42"W

S 37°34'36"W

N 53°08'42"W

S 43°29'39"W

S 53°08'42"E

N 53°08'42"W

S 37°34'36"W

N 53°08'42"W

S 43°29'39"W

S 53°08'42"E

N 53°08'42"W

S 37°34'36"W

N 53°08'42"W

S 43°29'39"W

S 53°08'42"E

N 53°08'42"W

S 37°34'36"W

N 53°08'42"W

S 43°29'39"W

S 53°08'42"E

N 53°08'42"W

S 37°34'36"W

N 53°08'42"W

S 43°29'39"W

S 53°08'42"E

N 53°08'42"W

S 37°34'36"W

N 53°08'42"W

S 43°29'39"W

S 53°08'42"E

N 53°08'42"W

S 37°34'36"W

N 53°08'42"W

S 43°29'39"W

S 53°08'42"E

N 53°08'42"W

S 37°34'36"W

N 53°08'42"W

S 43°29'39"W

S 53°08'42"E

N 53°08'42"W

S 37°34'36"W

N 53°08'42"W

S 43°29'39"W

S 53°08'42"E

N 53°08'42"W

S 37°34'36"W

N 53°08'42"W

S 43°29'39"W

S 53°08'42"E

N 53°08'42"W

S 37°34'36"W

N 53°08'42"W

S 43°29'39"W

S 53°08'42"E

N 53°08'42"W

S 37°34'36"W

N 53°08'42"W

S 43°29'39"W

S 53°08'42"E

N 53°08'42"W

S 37°34'36"W

N 53°08'42"W

S 43°29'39"W

S 53°08'42"E

N 53°08'42"W

S 37°34'36"W

N 53°08'42"W

S 43°29'39"W

S 53°08'42"E

N 53°08'42"W

S 37°34'36"W

N 53°08'42"W

S 43°29'39"W

S 53°08'42"E

N 53°08'42"W

S 37°34'36"W

N 53°08'42"W

S 43°29'39"W

S 53°08'42"E

N 53°08'42"W

S 37°34'36"W

N 53°08'42"W

S 43°29'39"W

S 53°08'42"E

N 53°08'42"W

S 37°34'36"W

N 53°08'42"W

S 43°29'39"W

S 53°08'42"E

N 53°08'42"W

S 37°34'36"W

N 53°08'42"W

S 43°29'39"W

S 53°08'42"E

N 53°08'42"W

S 37°34'36"W

N 53°08'42"W

S 43°29'39"W

S 53°08'42"E

N 53°08'42"W

S 37°34'36"W

N 53°08'42"W

S 43°29'39"W

S 53°08'42"E

N 53°08'42"W

S 37°34'36"W

N 53°08'42"W

S 43°29'39"W

S 53°08'42"E

N 53°08'42"W

S 37°34'36"W

N 53°08'42"W

S 43°29'39"W

S 53°08'42"E

N 53°08'42"W

S 37°34'36"W

N 53°08'42"W

S 43°29'39"W

S 53°08'42"E

N 53°08'42"W

S 37°34'36"W

N 53°08'42"W

S 43°29'39"W

S 53°08'42"E

N 53°08'42"W

S 37°34'36"W

N 53°08'42"W

S 43°29'39"W

S 53°08'42"E

N 53°08'42"W

S 37°34'36"W

N 53°08'42"W

S 43°29'39"W

S 53°08'42"E

N 53°08'42"W

S 37°34'36"W

N 53°08'42"W

S 43°29'39"W

S 53°08'42"E

N 53°08'42"W

S 37°34'36"W

N 53°08'42"W

S 43°29'39"W

S 53°08'42"E

N 53°08'42"W

S 37°34'36"W

N 53°08'42"W

S 43°29'39"W

S 53°08'42"E

N 53°08'42"W

S 37°34'36"W

N 53°08'42"W

S 43°29'39"W

S 53°08'42"E

N 53°08'42"W

S 37°34'36"W

N 53°08'42"W

S 43°29'39"W

S 53°08'42"E

N 53°08'42"W

S 37°34'36"W

N 53°08'42"W

S 43°29'39"W

S 53°08'42"E

N 53°08'42"W

S 37°34'36"W

N 53°08'42"W

S 43°29'39"W

S 53°08'42"E

N 53°08'42"W

S 37°34'36"W

N 53°08'42"W

S 43°29'39"W

S 53°08'42"E

N 53°08'42"W

S 37°34'36"W

N 53°08'42"W

S 43°29'39"W

S 53°08'42"E