

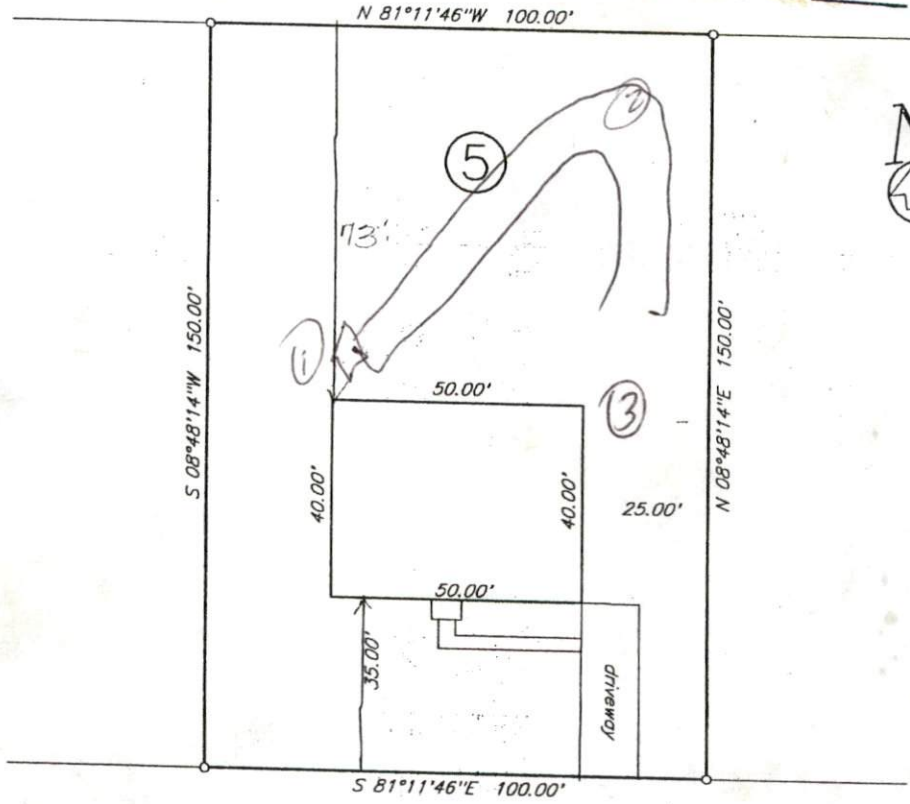
APPLICANT NAME _____

DATE _____

FACTORS		PROFILES								
		1	2	3	4	5	6	7	8	9
LANDSCAPE POSITION	.1940									
SLOPE (%)	.1940									
HORIZON 1 DEPTH		0-47	0-36	0-36						
Texture Group	.1941(A)(1)	LS/SL	YR	YS						
Consistence	.1941									
Structure	.1941(A)(2)									
Mineralogy	.1941(A)(3)									
HORIZON 2 DEPTH										
Texture Group	.1941(A)(1)									
Consistence	.1941									
Structure	.1941(A)(2)									
Mineralogy	.1941(A)(3)									
HORIZON 3 DEPTH										
Texture Group	.1941(A)(1)									
Consistence	.1941									
Structure	.1941(A)(2)									
Mineralogy	.1941(A)(3)									
HORIZON 4 DEPTH										
Texture Group	.1941(A)(1)									
Consistence	.1941									
Structure	.1941(A)(2)									
Mineralogy	.1941(A)(3)									
SOIL WETNESS	.1942	—	—	—						
RESTRICTIVE HORIZON	.1944									
SAPROLITE	.1943/.1956									
CLASSIFICATION	.1948	S	S	S						
LONG TERM ACCEPTANCE RATE	.1955	8	8	8						

SITE PLAN APPROVAL
 DISTRICT N USE SFD
 #BEDROOMS 3
3-8-2000 D. Johnson
 Date Zoning Administrator

Required	Minimum	Actual
Front	35	35
Side	10	25
Corner		
Rear	25	73
Nearst Building	10	



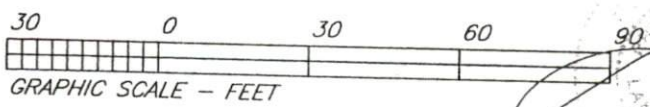
Montana Lane 60'R/W

Plot Plan
Price Construction Company

Sierra Villa Subdivision Section Nine
PC # F Slide 266-B

Anderson Creek Township
Harnett County
North Carolina
Scale 1" = 30' November 1999

George L. Lott Surveyors
 128 Rowland Circle Fayetteville, N.C. 28301
 488-8659



PRELIMINARY
 NOT FOR RECORDATION,
 CONVEYANCES, OR SALES.

George L. Lott, PLS L-1379
 Seal must appear in Red to be Original.