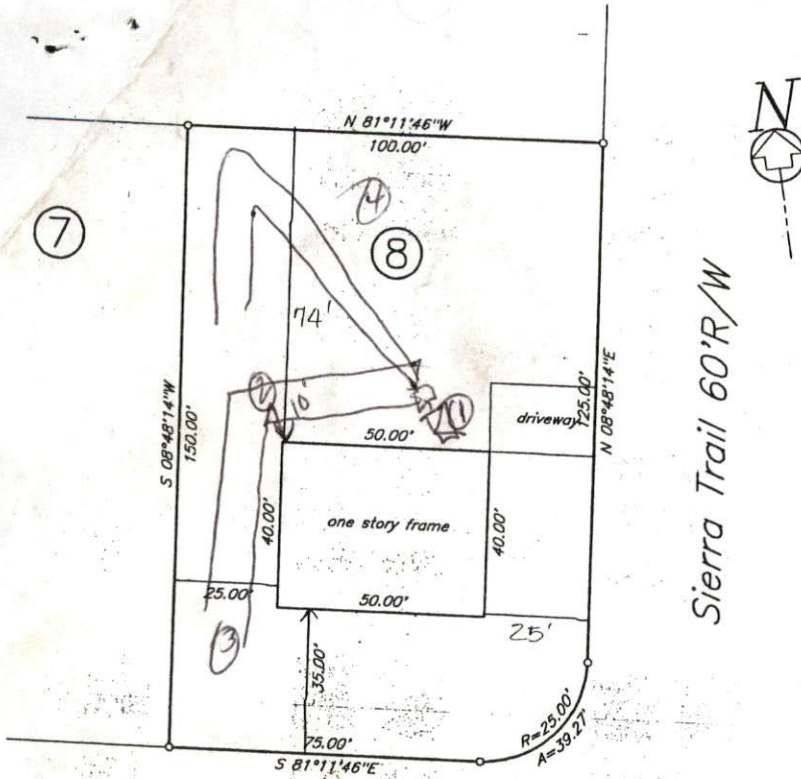


APPLICANT NAME \_\_\_\_\_

DATE \_\_\_\_\_

FACTORS		ROFILES								
		1	2	3	4	5	6	7	8	9
LANDSCAPE POSITION	.1940									
SLOPE (%)	.1940									
HORIZON 1 DEPTH		1-42	0-42	0-42	0-42					
Texture Group	.1941(A)(1)	4/5	4/5	4/5	4/5					
Consistence	.1941									
Structure	.1941(A)(2)									
Mineralogy	.1941(A)(3)									
HORIZON 2 DEPTH										
Texture Group	.1941(A)(1)									
Consistence	.1941									
Structure	.1941(A)(2)									
Mineralogy	.1941(A)(3)									
HORIZON 3 DEPTH										
Texture Group	.1941(A)(1)									
Consistence	.1941									
Structure	.1941(A)(2)									
Mineralogy	.1941(A)(3)									
HORIZON 4 DEPTH										
Texture Group	.1941(A)(1)									
Consistence	.1941									
Structure	.1941(A)(2)									
Mineralogy	.1941(A)(3)									
SOIL WETNESS	.1942	—	—	—	—					
RESTRICTIVE HORIZON	.1944									
SAPROLITE	.1943/1956									
CLASSIFICATION	.1948	S	S	S	S					
LONG TERM ACCEPTANCE RATE	.1955	.8	.8	.8	.8					



Sierra Trail 60'R/W

**SITE PLAN APPROVAL**  
 DISTRICT N/A USE SED  
 #BEDROOMS 3  
 Date 3-9-2000 J. Johnson  
 Zoning Administrator

Montana Lane 60'R/W

	Minimum	Actual
Front	35	25
Side	10	25
Corner	—	25
Rear	25	74
Nearest Building	10	—

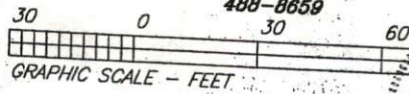
*Plot Plan*  
**Price Construction Company**

Sierra Villa Subdivision Section Nine  
 PC # F Slide 266-B  
 Anderson Creek  
 Harnett  
 North  
 Scale 1" = 30'

Township  
 County  
 Carolina

March 2000

George L. Lott Surveyors  
 126 Rowland Circle Fayetteville, N.C. 28301  
 488-8659



**PRELIMINARY**  
 NOT FOR RECORDATION,  
 CONVEYANCES, OR SALES.

Seal must appear on this map and be Original.