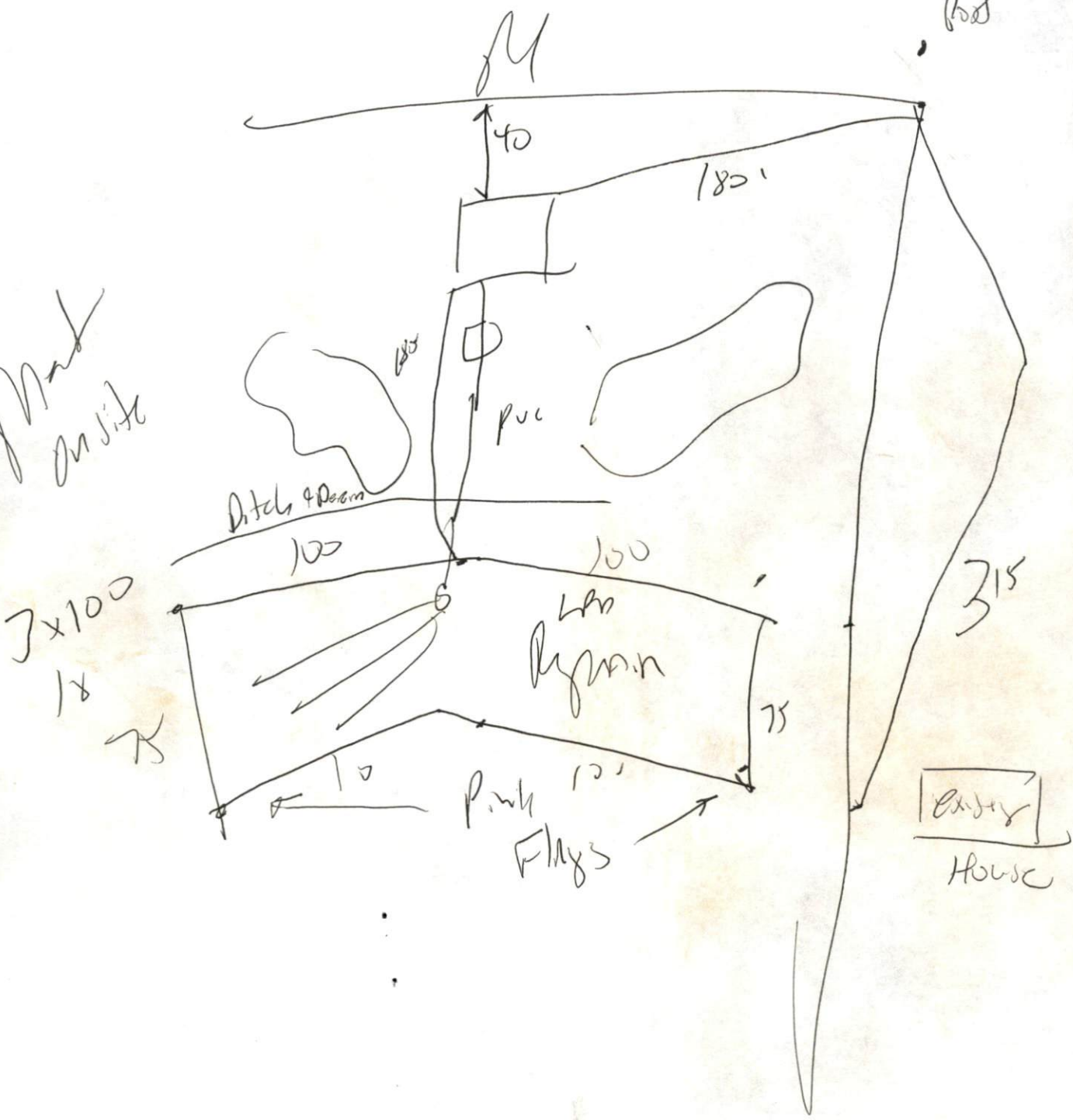
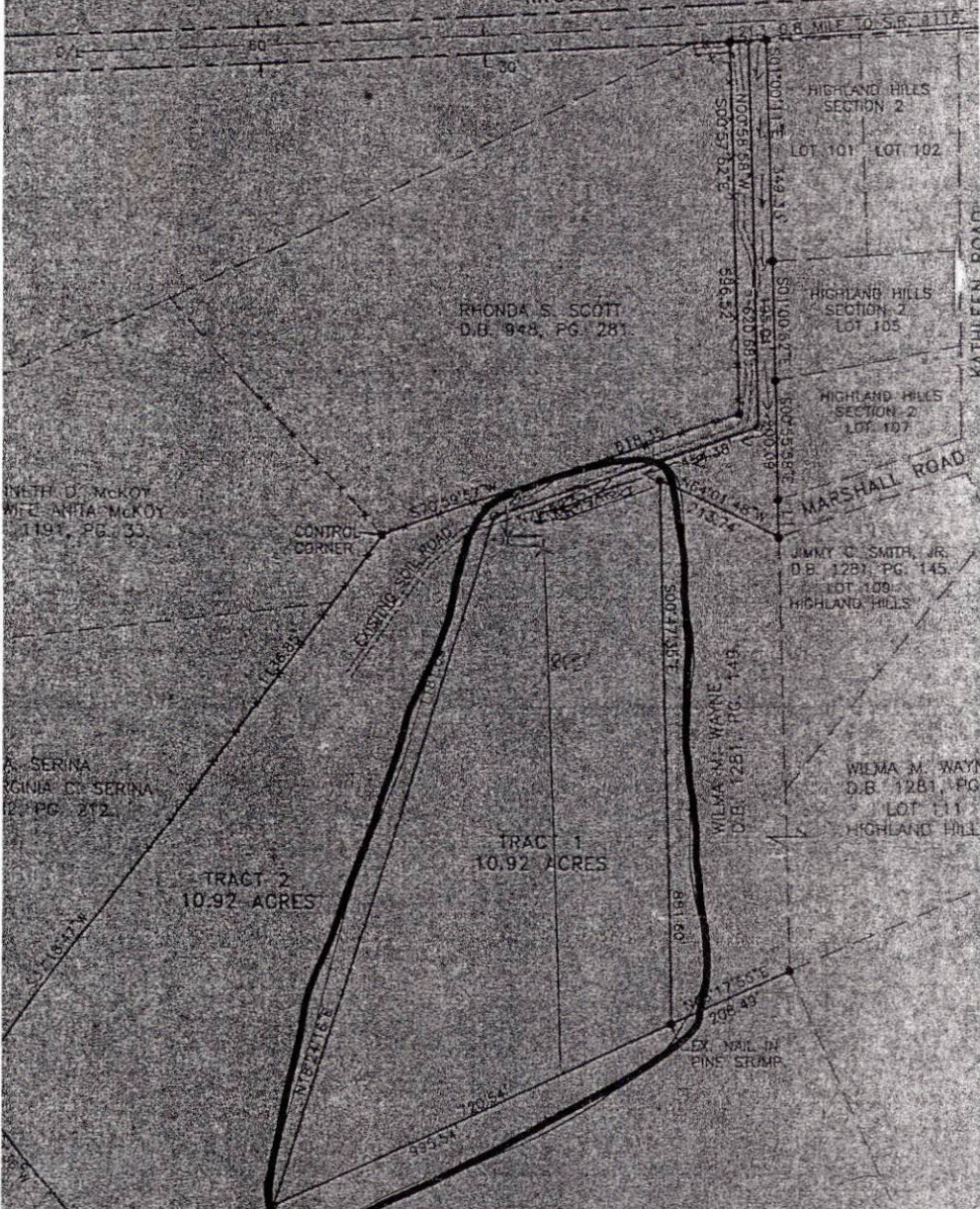


Mark on site



MICRO TOWER ROAD S.R. 1141



NETH D. MCKOY
WIFE ANITA MCKOY
D.B. 1191, PG. 33

RHONDA S. SCOTT
D.B. 948, PG. 281

SERINA
GINIA D. SERINA
D.B. PG. 212

TRACT 2
10.92 ACRES

TRACT 1
10.92 ACRES

JIMMY C. SMITH, JR.
D.B. 1281, PG. 145
LOT 109
HIGHLAND HILLS

WILMA M. WAYNE
D.B. 1281, PG. 145
LOT 111
HIGHLAND HILLS

HARLEY S. GORDY
D.B. 962 SHE PLAN APPROVAL

DISTRICT N/A USE SWMH

#BEDROOMS 2

Date 2-24-2000 D. Johnson
Zoning Administrator

Required Property Line Setbacks

	Minimum	Actual
Front	35	35
Side	10	35
Corner		
Rear	25	80
Nearest Building	10	

I CERTIFY THE PLAT SHOWN HEREON COMPLIES WITH THE HARNETT COUNTY WATERSHED PROTECTION ORDINANCE...