

# Revels Tractor On Site Fuel Tank Site Plan

NO.	REVISION	DATE
1.	PER COMMENTS	10-09-23

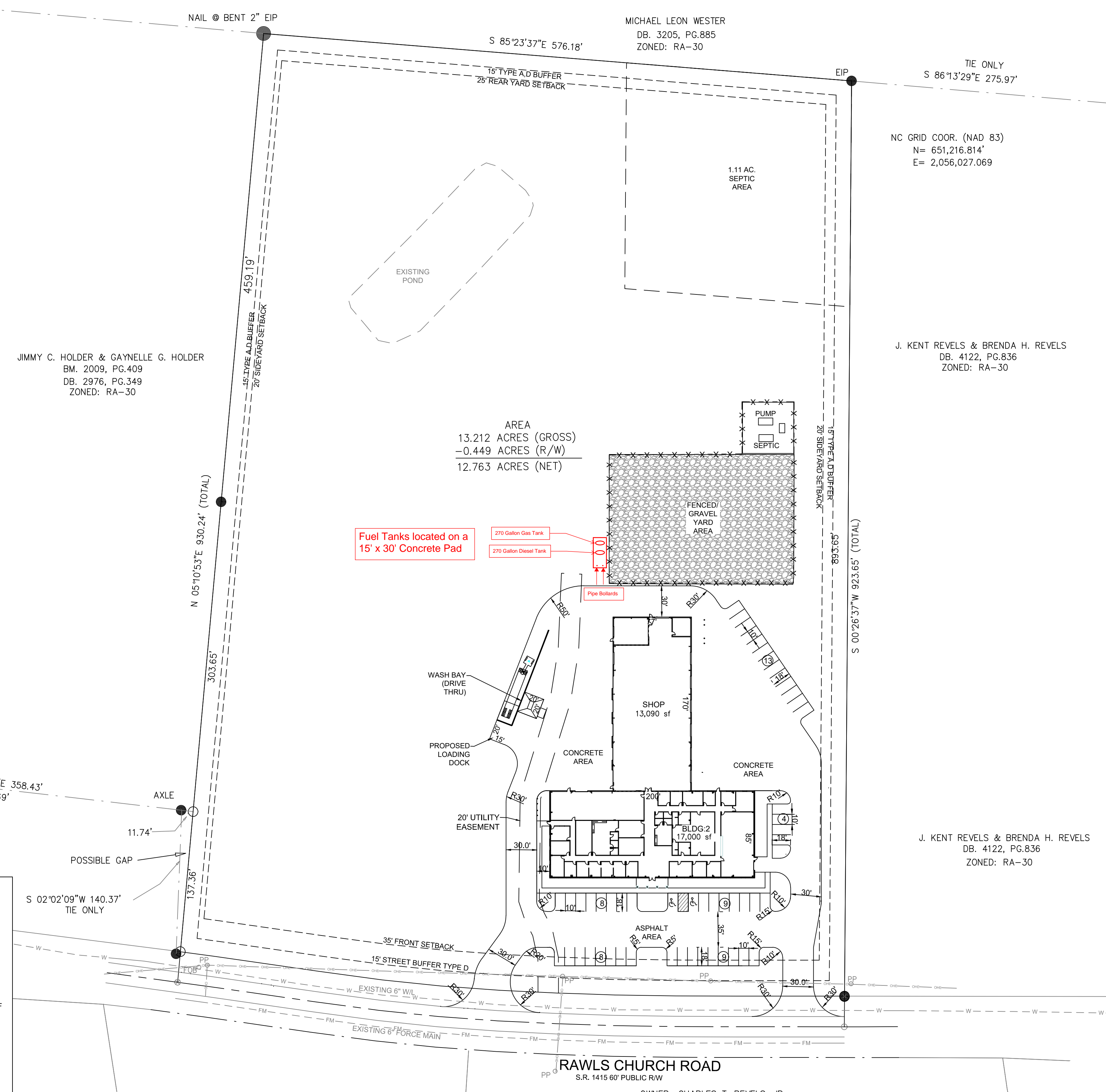
SEAL:

**STEWART - PROCTOR**  
**SP** ENGINEERING AND SURVEYING P-0148  
 319 CHAPANOKE ROAD  
 Raleigh, North Carolina 27603  
 Phone (919) 779-1855 Fax (919) 779-1661

PREPARED FOR: REVELS TURF AND TRACTOR 2217 N MAIN STREET FUQUAY-VARINA, NC 27526	DATE: 12-13-22
PROJECT ENGINEER: MIKE STEWART	PROJECT CAD DESIGNER: JOHN A. TEEL
PROJECT NUMBER:	

## REVELS TURF AND TRACTOR HARNETT COUNTY, NORTH CAROLINA SITE PLAN

DRAWING SHEET  
**C-3**

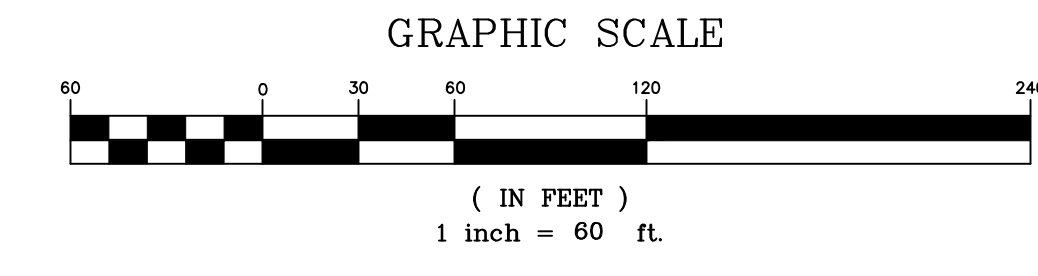


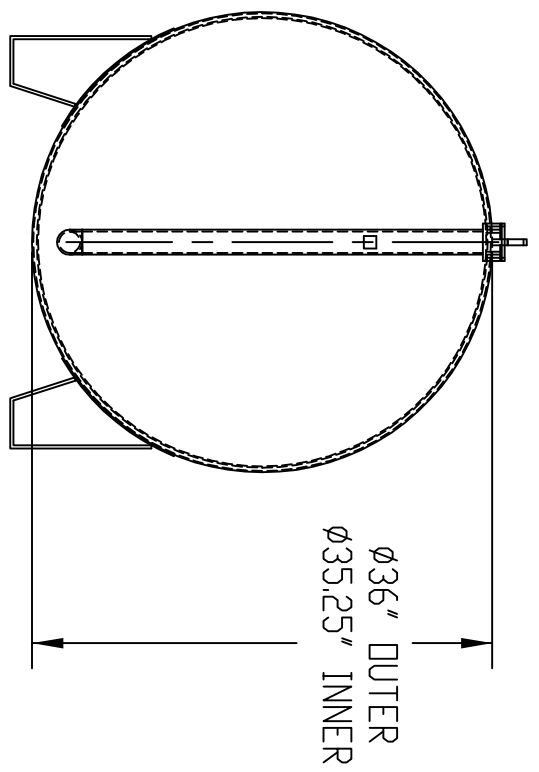
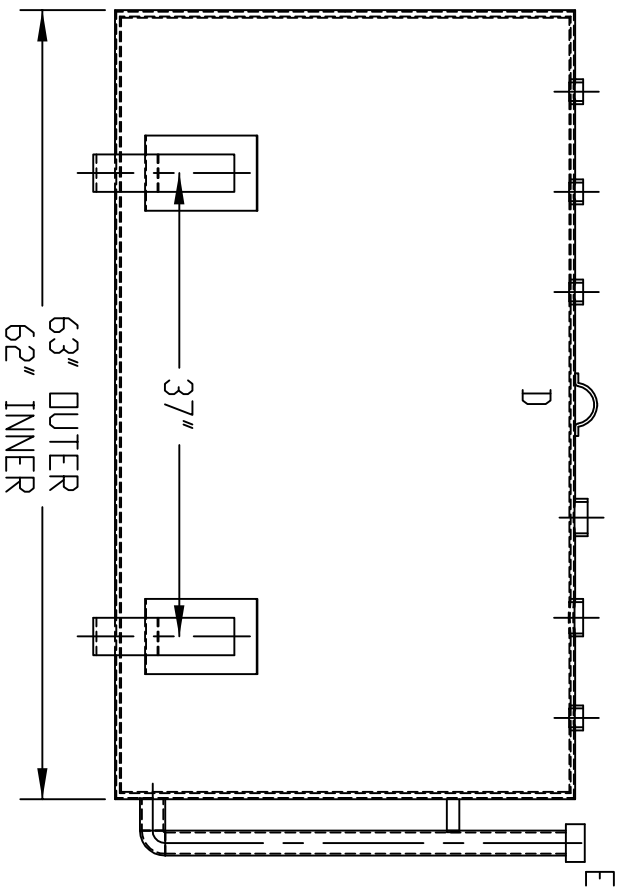
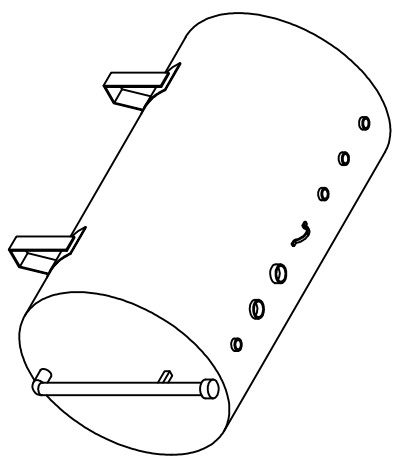
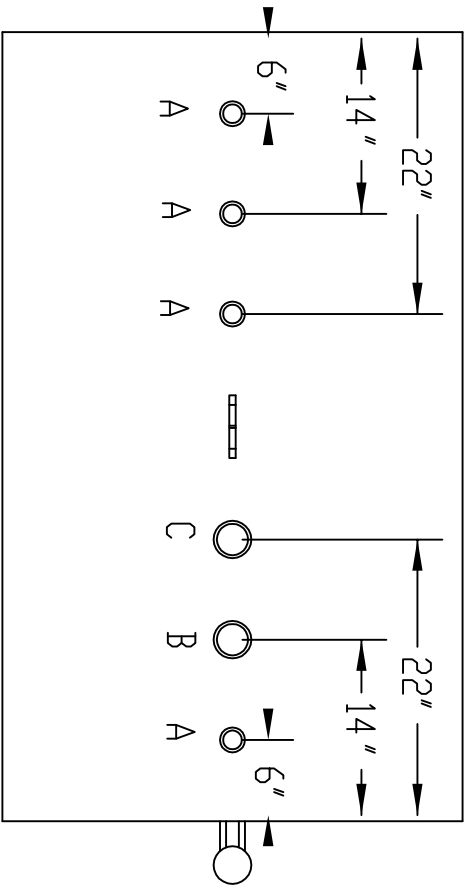
- GENERAL SITE NOTES:**
1. SITE CURRENTLY IS FALLOW AND VACANT.
  2. ALL CONSTRUCTION SHALL CONFORM TO HARNETT COUNTY DESIGN AND CONSTRUCTION STANDARDS.
  3. ALL NECESSARY APPROVALS, STATE AND LOCAL, SHALL BE OBTAINED PRIOR TO THE COMMENCEMENT OF ANY CONSTRUCTION.
  4. ALL NECESSARY ENCROACHMENT AGREEMENTS SHALL BE OBTAINED PRIOR TO THE COMMENCEMENT OF ANY CONSTRUCTION.
  5. CONSTRUCTION DRAWING APPROVAL IS REQUIRED BEFORE CONSTRUCTION OF THIS PROJECT CAN BEGIN. ALSO, ALL DEVELOPMENT FEES (ACREAGE, FEE-IN-LIEU OF ASSESSMENT, AND INSPECTION FEES) ARE DUE PRIOR TO FINAL CONSTRUCTION DRAWING APPROVAL.
  6. CONTRACTOR SHALL VERIFY THE ABOVE AND BELOW GROUND LOCATION OF ALL EXISTING UTILITIES PRIOR TO THE START OF CONSTRUCTION.
  7. CONTRACTOR SHALL COORDINATE THE RELOCATION OF ANY CONFLICTING UTILITIES WITH THE APPROPRIATE UTILITY COMPANY AND/OR AUTHORITY. CONTRACTOR SHALL VERIFY ALL EXISTING SITE CONDITIONS PRIOR. CONTRACTOR SHALL VERIFY ALL EXISTING SITE CONDITIONS PRIOR.
  8. CONTRACTOR SHALL VERIFY ALL EXISTING SITE CONDITIONS PRIOR TO THE START OF CONSTRUCTION NOTE - A SIGN PERMIT IS REQUIRED PRIOR TO INSTALLATION.
  9. 9 AM - 5 PM OFFICE HOURS OF OPERATION.
  10. AG 360 PROPERTIES NC, LLC TO BE RESPONSIBLE FOR MAINTENANCE OF THE PARKING AREA, DRIVE AISLES, AND ALL LANDSCAPE BUFFERING.
  11. THIS DEVELOPMENT IS WITHIN ONE MILE OF A VOLUNTARY AGRICULTURAL DISTRICT.
  12. ROAD SIGN SHOULD BE SETBACK AT LEAST 10' FROM NCDOT RIGHT-OF-WAY; THIS WILL REQUIRE AN ADDITIONAL REVIEW.

NOTE:  
 THIS PROJECT LIES WITHIN WS-III WATER SUPPLY WATERSHED DISTRICT AND LIMITED TO 36% MAXIMUM IMPERVIOUS

**SITE DATA**

TOTAL TRACT SIZE:	555,826 S.F. 12.76 AC.
EXISTING USE:	VACANT
PROPOSED USE:	WAREHOUSE/OFFICE/SHOP
WATERSHED CLASSIFICATION:	WS-IV-P
AREA TO BE LEFT NATURAL:	6.30 AC.
ZONING:	COMM
PROPOSED BUILDING/SHOP 2 SIZE:	30,090 S.F.
TOTAL PROPOSED BUILDING SIZE:	30,090 S.F.
PROPOSED SPACES REQUIRED FOR BLDG 2 (SHOP AREA 14 EMPLOYEES + 20 OFFICE EMPLOYEES + 10 VISITOR SPACES):	44 SPACES
TOTAL PARKING SPACES REQUIRED:	44 SPACES
TOTAL PARKING SPACES PROVIDED (INCL. 2 HC.):	51 SPACES
EXISTING IMPERVIOUS AREA:	0 S.F., 0.0%
CONCRETE PAVEMENT AREA:	63,721 S.F.
ASPHALT PAVEMENT AREA:	13,724 S.F.
VEHICULAR SURFACE AREA:	77,445 S.F.
GRAVEL SURFACE AREA:	23,945 S.F.
PROPOSED IMPERVIOUS AREA:	131,480 S.F. 23.7%
DENUDED AREA:	283,140 S.F. 6.5 AC.
P.I.N.:	0655-50-7726
SITE ADDRESS:	0 RAWLS CHURCH RD. REVELS REVELS AND JOSEPH REVELS 2217 N MAIN ST FUQUAY-VARINA, NC 27526
OWNER:	





REF. TO: STANDARD TANK  
 DATE: 05/20/08  
 DWG BY: AH

TITLE: **STDW-270-12P**  
 SCALE: 1:16

DESCRIPTION: ABOVE GROUND, DOUBLE WALL  
 12 GA. INNER/12 GA. OUTER  
 STEEL STORAGE TANK  
 CAPACITY: 262 GALLONS  
 FINISH: SURFACE PREP, SPCC, SP-3; ONE  
 SPRAY COAT OF PRIMER; OPT FINISH  
 APPROX. WEIGHT: 630 lbs ± 5%



LEGEND: ID - (QTY, DF OPENINGS) PART  
 A - (3) 2' NPT CPL  
 B - (1) 3' INNER EVENT CPL  
 C - (1) 3' OUTER EVENT FLANGE  
 D - (1) 2' INSPECTION PIPE  
 E - (1) FORGED LIFT LUG

TURNER TANKS  
 1500 HWY 117 S.  
 GOLDSBORO, NC 27530  
 P: (919) 734-8828  
 F: (919) 736-4650  
 SIGNED APPROVAL:

# RP-10 Rotary Hand Pump for Fuel and Petroleum

## Owner's Manual



5252 East 36th Street North  
Wichita, KS USA 67220-3205  
TEL: 316-686-7361  
FAX: 316-686-6746

**GREAT PLAINS INDUSTRIES, INC.**

"A Great Plains Ventures Subsidiary"

www.gpi.net

1-800-835-0113

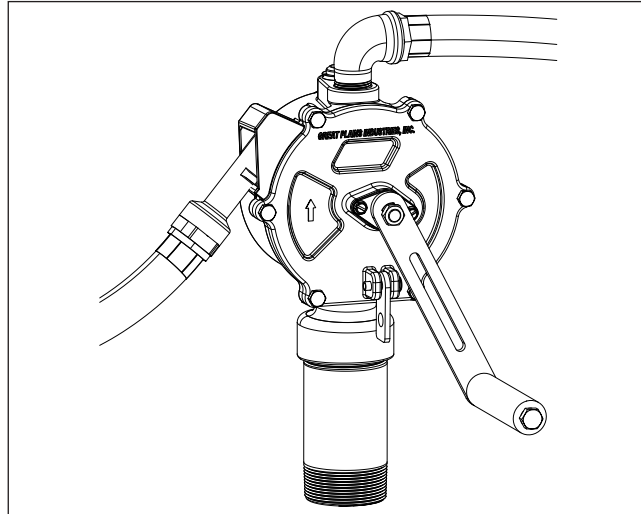


# STOP

**DO NOT RETURN  
THIS PRODUCT  
TO THE STORE!**

Please contact GPI before returning any product. If you are missing parts or experience problems with your installation, our Customer Support Department will be happy to assist you.

GPI Customer Support  
**800-835-0113 or  
316-686-7361**



# WARNING

This product shall not be used for pumping fuel or other liquids into aircraft.

## GENERAL INFORMATION

The RP-10 Rotary Hand pump is designed for use with gasoline (up to 15% alcohol blends such as E15), diesel fuel (up to 20% biodiesel blends such as B20), kerosene and up to medium weight oils. These self-priming pumps deliver up to 10 gallons (38 litres) per 100 revolutions and are designed for use on a tank with a 2-inch bung. They are equipped with an anti-siphon vent to prevent possible tank siphoning. Do not use the RP-10 pump with chemicals.

### Safety Instructions

Observe standard safety precautions when handling fuel.

- Keep away from open flame or spark.
- Do not refuel vehicles or equipment with engines running or while equipment engine is hot.
- Do not smoke while refueling.

## INSTALLATION

Before installation, clean the tank interior of dirt and foreign material. Wrap all threads that are exposed to liquids with 3 to 4 turns of thread tape or a thread-sealing compound approved for use with petroleum fuels. Remove protective covers and plugs.

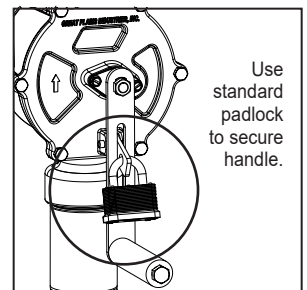
1. Hand-tighten the riser on to the tank bung.
2. Assemble the crank and handle. Then snugly tighten the crank on-to the shaft. Reference the Illustrated Parts Drawing for details.
3. Screw the suction pipe into the pump inlet.
4. Extend the suction pipe to its full length. Insert it through the riser and into the tank. Adjust the suction pipe to the length needed to rest on the tank bottom. If tank debris is a potential problem, raise the end of the suction pipe 2 to 3 inches.
5. Screw the pump onto the riser. Tighten until snug.

To install the hose and nozzle, thread the elbow fitting into the pump outlet and tighten until snug. Hand-tighten the hose into the elbow until snug. Tighten the nozzle onto the hose fitting. Insert the nozzle into the hanger.

## OPERATIONS

To dispense fuel, remove the nozzle from its hanger and insert into a tank. Pump fuel by rotating the crank in the direction of the arrow on the housing. After dispensing fuel, drain the hose and replace the nozzle in the hanger.

During daily use, this pump is essentially maintenance free. However, the pump should be inspected periodically for signs of leakage. If leaks are present or other problems occur, refer to the Troubleshooting Section.



## SPECIFICATIONS

The Rotary Hand Pump is compatible with gasoline (up to 15% alcohol blends such as E15), diesel fuel (up to 20% biodiesel blends such as B20), kerosene and up to medium weight oils.

**Construction:** Lightweight, die-cast aluminum housing. Stainless steel shaft. Nitrile seals. Cast iron rotor and carbon vanes. Built-in anti-siphon vent.

**Pumping Capacity:** Up to 10 gallons (38 litres) per 100 revolutions

**Inlet:** 1-inch NPT female

**Outlet:** 3/4-inch NPT female

**Shipping Weight:** 17 lbs. (7.7 kg)

**Hose and Nozzle:** 3/4-inch x 8 foot (2.4m) Buna-N statically grounded hose. Aluminum Alloy unleaded nozzle

**Suction Pipe:** Plastic, adjustable from 22 to 40 inches (55 to 102cm)

## PARTS AND SERVICE

For warranty consideration, parts or other service information, please contact your local distributor or the GPI Customer Service Department, during normal business hours at:

**1-800-835-0113**

To obtain prompt, efficient service, be prepared with:

- the model number of your pump
- the serial number or manufacturing date code of your pump, and
- parts descriptions and numbers

Reference the Illustrated Parts List for specifics on parts. For warranty service, be prepared with your original sales slip or other evidence of purchase date.

### CAUTION

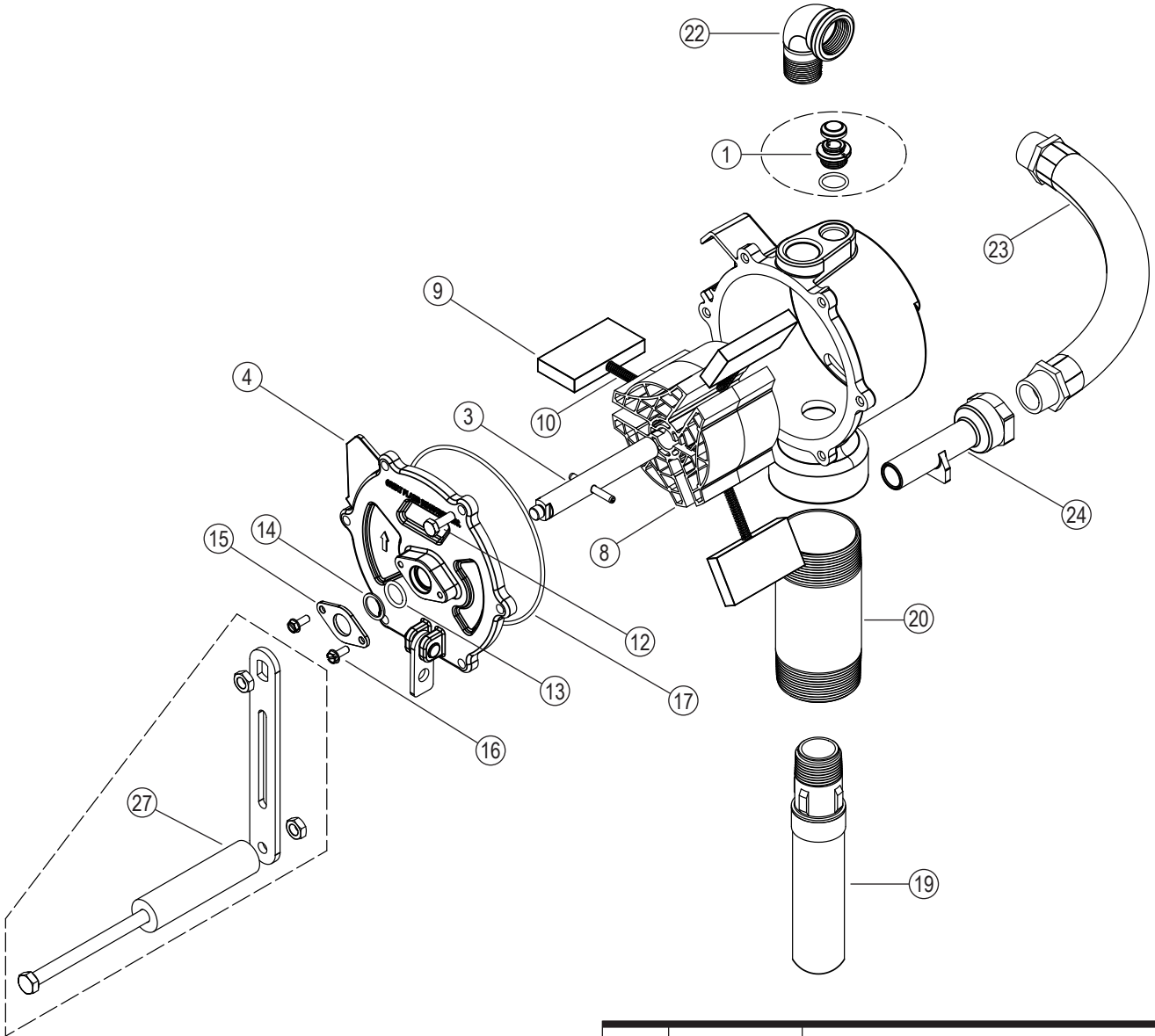
**Do not return the pump without specific authority from the GPI Customer Service Department. Due to strict regulations governing transportation, handling, and disposal of hazardous or flammable liquids, GPI will not accept pumps for rework unless they are completely free of liquid residue.**

## TROUBLESHOOTING

SYMPTOM	PROBABLE CAUSE	CORRECTIVE ACTION
A. FLUID LEAKS AROUND SHAFT	<ol style="list-style-type: none"> <li>1. Retainer loose</li> <li>2. O-ring worn</li> </ol>	<p>Tighten retainer screws.</p> <p>Check shaft O-ring for excessive wear. Replace Shaft Seal O-ring, if necessary.</p>
B. FLUID LEAKS AT ANTI-SIPHON VENT	<ol style="list-style-type: none"> <li>1. Anti-siphon vent or O-ring damaged</li> </ol>	<p>Remove vent cap. Loosen vent by turning counterclockwise. Remove vent and O-ring. Clean. To replace, seat O-ring on vent and screw vent into place until bottomed out. Replace vent cap.</p>
C. LOW FLOWRATE	<ol style="list-style-type: none"> <li>1. Internal parts worn or debris in vane cavity</li> <li>2. Vanes cracked</li> </ol>	<p>Remove coverplate and inspect for wear on vanes, coverplate, and all inside housing surfaces. Replace any scored parts.</p> <p>Remove coverplate and inspect for chips or cracks on vanes. If necessary, replace vanes.</p>
D. PUMP FAILS TO PUMP	<ol style="list-style-type: none"> <li>1. Suction pipe leak</li> <li>2. Internal parts worn or debris in vane cavity</li> <li>3. Vanes cracked</li> </ol>	<p>Remove pump from riser. Inspect the suction pipe for wear or damage. Replace, as necessary, and install pump on tank.</p> <p>Remove coverplate and inspect for wear on vanes, coverplate, and all inside housing surfaces. Replace any scored parts.</p> <p>Remove coverplate and inspect for chips or cracks on vanes. If necessary, install Overhaul Kit or replace vanes.</p>
E. HANDLE TURNS HARD OR PUMP SEIZED	<ol style="list-style-type: none"> <li>1. Debris in vane cavity</li> <li>2. Internal parts worn</li> </ol>	<p>Remove pump from tank. Remove coverplate and inspect for debris in cavity. Clean cavity, vanes, and rotor. Flush contamination from tank. Assemble and install pump.</p> <p>Remove pump from tank. Remove coverplate and inspect for damaged necessary, install Overhaul Kit or replace vanes.</p>
F. VANES STICKING	<ol style="list-style-type: none"> <li>1. Debris in vane cavity</li> </ol>	<p>Remove coverplate. Use emery cloth to remove debris or corrosion in vane slots. Apply lubricant (WD-40®) if needed.</p>



# ILLUSTRATED PARTS LIST



## Kits and Accessories

- A** 123501-1 Shaft Seal Kit includes O-ring, back-up ring, and seal.
- B** 123503-1 Overhaul Kit includes vanes, springs, and Shaft Seal Kit.
- 123505-3 Hardware Kit
- 115527-2 Suction Pipe Extension, 15 inches or 38.1cm.

Item No.	Part No.	Description	No. Req'd.
1	123504-1	Anti-Siphon Vent Kit.....	1
3	123507-1	Shaft Assembly Kit.....	1
4	123008-1	Coverplate .....	1
8	123509-1	Rotor with Springs Kit.....	1
9	123011-1	Vane or (Kit <b>B</b> ).....	3
10	123012-1	Spring or (Kit <b>B</b> ) .....	3
12	904004-16	Screw, 1/4-20 x 3/4".....	6
13	901003-63	O-Ring or (Kit <b>A</b> or <b>B</b> ).....	1
14	901002-58	Back-up Ring or (Kit <b>A</b> or <b>B</b> ).....	1
15	123013-1	Retainer .....	1
16	904004-60	Retainer Screws .....	2
17	901003-64	O-Ring or (Kit <b>A</b> ) .....	1
19	110100-1	Suction Pipe Assembly .....	1
20	906006-06	Pipe Nipple, 2" NPT x 5".....	1
22	904004-73	Elbow Fitting.....	1
23	114045-1	Hose Assembly.....	1
24	114047-1	Metal Nozzle.....	1
	114036-1	Plastic Nozzle.....	1
27	123506-1	Crank Assembly Kit .....	1



# Limited Warranty Policy

Great Plains Industries, Inc. (GPI) hereby provides a limited warranty against defects in material and workmanship on all products manufactured by GPI. The warranty period shall begin on the date of purchase confirmed with the original purchase receipt or, if not available, the date of manufacture. Manufacturer's sole obligation under the following warranties will be limited to either, at Manufacturer's option, replacing or repairing defective goods. If the product is no longer available, replacement may be made with a similar product of equal or greater value. Buyer's exclusive remedy for breach of any such warranties will be enforcement of such obligations of Manufacturer. The warranty shall extend to the purchaser of this product and to any person to whom such product is transferred during the warranty period.

### Warranty shall not apply if:

The product has been subjected to neglect, misuse, abuse or damage or has been installed or operated other than in accordance with the manufacturer's operating instructions or the product has been altered or modified outside the warrantor's duly appointed representative.

**Product components considered wear items, i.e. vanes, etc., are NOT included within the scope of this warranty.**

Charges for shipping and insuring packages to GPI are the customer's responsibility. GPI will ship the warranted product back to the customer via ground shipping free of charge for shipments within the United States. International shipping charges and customs fees to and from GPI are the customer's responsibility.

GREAT PLAINS INDUSTRIES, INC., EXCLUDES LIABILITY UNDER THIS WARRANTY FOR DIRECT, INDIRECT, INCIDENTAL AND CONSEQUENTIAL DAMAGES INCURRED IN THE USE OR LOSS OF USE OF THE PRODUCT WARRANTED HEREUNDER.

THE COMPANY HEREWITH EXPRESSLY DISCLAIMS ANY WARRANTY OF MERCHANTABILITY OR FITNESS FOR ANY PARTICULAR PURPOSE OTHER THAN FOR WHICH IT WAS DESIGNED.

THIS WARRANTY GIVES YOU SPECIFIC RIGHTS AND YOU MAY ALSO HAVE OTHER RIGHTS WHICH VARY FROM U.S. STATE TO U.S. STATE.

In compliance with MAGNUSON MOSS CONSUMER WARRANTY ACT - PART 702 (governs the resale availability of the warranty terms)

**To obtain warranty service contact the GPI Product Support Department:**

**316-686-7361 or 800-835-0113**

GPI will guide you through a product troubleshooting process to determine the appropriate corrective actions.

GPI is a registered trademark of Great Plains Industries, Inc. © 2009 by GREAT PLAINS INDUSTRIES, INC., Wichita, KS

Printed in U.S.A.

06/21/2022



### The following respective warranty periods apply:



**FIVE-YEAR WARRANTY** applies to the following product families:  
**GPRO® Fluid Transfer Pumps:** PRO20-115, PRO20-230, V25-012, V25-024, PRO35-115  
**GPRO® Remote Dispensers:** QM240-RD, QM150-RD  
**GPRO® Fuel Meters:** QM40  
**GPI® Fuel Meters:** M30



**TWO-YEAR WARRANTY** applies to the following product families:  
**GPI® Fluid Transfer Pumps:** G8P, EZ8, M-150S, M-180S, M-240S, G20-012\*, M-1115S, P-200, PA-200, P-120H, P-200H, PA-120H, PA-200H, HP-100, HP-90, DP-20, RP-10  
**GPI® Fluid Meters:** 01A, 01N, 03A, 03N, FM-300H, LM51DN, LM-300



**ONE-YEAR WARRANTY** applies to the following products:  
**GPI® Oil Transfer Pumps:** L 5016, L 5116, L 5132



**90-DAY WARRANTY** applies to the following products:  
**GPI® Fluid Transfer Hand Pumps:** RP-5, BP-12, CP-5, LP-50  
**90-DAY WARRANTY** applies to Spare Parts, Kits and Accessories including Nozzles\*, Hoses, Swivels, Vent Caps, Filter Adapters, etc.  
**90-DAY WARRANTY** applies to Factory Repairs from repair date or the balance of the original warranty whichever is longer.

*\*Extended warranty coverage available on select products. Requires registration of product with manufacturer. Visit [gpi.net/product-registration/](http://gpi.net/product-registration/)*



**COMPANY HEADQUARTERS:**  
5252 East 36<sup>th</sup> Street North  
Wichita, KS, USA 67220-3205

**LEARN MORE:** [GPIpumps.com](http://GPIpumps.com)

**Revision Date: June 29, 2021**  
CORP-1083 Rev B\_Limited Warranty Policy

Rev. A 921462-07

# Model 245 Emergency Vents

SPECIFICATION SHEET

## Application

This lightweight, spring-loaded emergency vent (pressure relief only) is used on aboveground storage tanks, as a code requirement, to help prevent the tank from becoming over-pressurized and possibly rupturing if ever exposed to fire. This vent must be used in conjunction with a “normal vent.” Correct application of this vent requires proper vent size and selection for the tank system in order to meet the specific venting capacity.

## Materials of Construction

- Body... Aluminum
- Cover... Aluminum
- Seat... FKM
- Bolt... Zinc plated steel

## Code Compliance

When properly sized for the tank, this vent will conform to the requirements of the International Fire Code; National Fire Code of Canada; National Fire Protection Agency—NFPA 30, 30A, 31, 37, 110; Petroleum Equipment Institute—PEI RP200, PEI RP800; Underwriters Laboratories Inc.—UL-142, UL-2085, UL-2244; Underwriters Laboratories of Canada—CAN/ULC S601, CAN/ULC S602, CAN/ULC S652

## Approvals

Underwriters Laboratories Inc. UL-2583



4” vent (245M)



4” vent (245F)



6” vent (245)

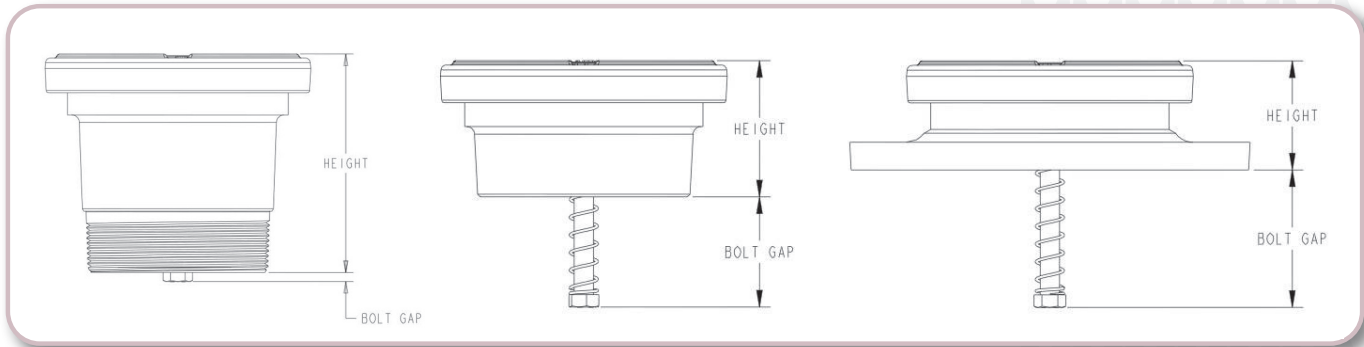
### NOTE

Emergency vent should be set higher than the normal vent so the normal vent operates first.

### WARNING: DO NOT FILL OR UNLOAD FUEL FROM A STORAGE TANK UNLESS IT IS CERTAIN THAT THE TANK VENTS WILL OPERATE PROPERLY.

Morrison tank vents are designed only for use on shop fabricated atmospheric tanks which have been built and tested in accordance with UL 142, NFPA 30 & 30A, and API 650 and in accordance with all applicable local, state and federal laws. In normal operation, dust and debris can accumulate in vent openings and block air passages. Certain atmospheric conditions such as a sudden drop in temperature, below freezing temperatures, and freezing rain can cause moisture to enter the vent and freeze which can restrict internal movement of vent mechanisms and block air passages. All storage tank vent air passages must be completely free of restriction and all vent mechanisms must have free movement in order to insure proper operation. Any restriction of airflow can cause excessive pressure or vacuum to build up in the storage tank, which can result in structural damage to the tank, fuel spillage, property damage, fire, injury, and death. Monthly inspection, and immediate inspection during freezing conditions, by someone familiar with the proper operation of storage tank vents, is required to insure venting devices are functioning properly before filling or unloading a tank. Normal vents such as pressure vacuum and updraft vents for aboveground storage tanks should be sized according to NFPA 30 (2008) 21.4.3

245 part numbers and diagrams on next page...



Item Number	A	B	C	D	Overall Diameter	Height	Bolt Gap	Weight	Screen
245M--0200 AV	2"	31,917	M	8	3.00	1.50	1.60	0.50	
245MS-0200 AV	2"	24,069	M	8	3.00	1.50	1.60	0.50	S
245--0300 AV	3"	67,162		8	5.00	2.80	0.90	2.80	
245S--0300 AV	3"	56,241		8	5.00	2.80	0.90	2.80	S
245M--0300 AV	3"	67,162	M	8	5.00	3.60	< 1/4"	2.50	
245MS-0300 AV	3"	56,241	M	8	5.00	3.60	< 1/4"	2.50	S
245--0400 AV	4"	129,369		8	6.50	3.10	2.50	3.30	
245S--0400 AV	4"	115,086		8	6.50	3.10	2.50	3.30	S
245M--0400 AV	4"	129,369	M	8	6.00	5.40	< 1/4"	4.50	
245MS-0400 AV	4"	115,086	M	8	6.50	5.40	< 1/4"	4.50	S
245F--0400 AV †	4"	129,369	F	8	9.10	2.50	3.00	6.00	
245FS-0400 AV	4"	115,086	F	8	9.10	2.50	3.00	6.00	S
245--0600 AV	6"	331,750		8	8.50	3.40	2.60	5.50	
245S--0600 AV	6"	277,011		8	8.50	3.40	2.60	5.50	S
245M--0600 AV	6"	331,750	M	8	8.50	5.40	0.20	6.20	
245MS-0600 AV	6"	277,011	M	8	8.50	5.40	0.20	6.20	S
245F--0600 AV †	6"	331,750	F	8	11.00	2.90	3.20	9.10	
245FS-0600 AV	6"	277,011	F	8	11.00	2.90	3.20	9.10	S
245--0800 AV	8"	527,441		8	10.50	4.50	1.50	9.20	
245M--0800 AV	8"	527,441	M	8	10.50	5.70	0.40	10.10	
245F--0800 AV †	8"	527,441	F	8	13.50	3.30	2.90	14.50	
245F--1000 AV †	10"	972,110	F	8	16.00	2.80	6.00	20.00	

\*Refer to Price List for BSP options.

† Indicates model is available in a kit.

**SPECIFICATION OPTIONS:**

- A**—Size (inches)
- B**—Venting capacity/SCFH
- C**—Mounting connection: Male N.P.T. (M), Female N.P.T. (BLANK), Flanged (F)
- D**—Pressure settings: 8oz/in<sup>2</sup> (pressure required to open vent)
- Diameter**—Dimension across vent (inches)
- Height**—Dimension from base to top when closed (inches)
- Bolt Gap**—Dimension from base to bottom of bolt
- Weight**—Shipping weight (lbs)
- Screen (3 mesh stainless steel)**—Yes (S), No (blank)

Size	Item Number	Flanged Kits	Bolt Size
4"	245F--0408 AK	Includes 245F--0400 AV vent, flange adaptor, gasket, and (8) nuts/bolts	0.625" dia; 2" length
6"	245F--0608 AK	Includes 245F--0600 AV vent, flange adaptor, gasket, and (8) nuts/bolts	0.75" dia; 2.75" length
8"	245F--0808 AK	Includes 245F--0800 AV vent, flange adaptor, gasket, and (8) nuts/bolts	0.75" dia; 2.75" length
10"	245F--1008 AK	Includes 245F--1000 AV vent, flange adaptor, gasket, and (12) nuts/bolts	0.875" dia; 3" length





# Model 179 Series Hinged Style Fill Cap

SPECIFICATION SHEET

Designed for tank filling applications where a tight fill connection is not required. Threaded body installs onto riser pipe or directly into tank bung.

## Features

- Easy to open and close hinged operation
- Positive stop to prevent cover from contacting tank
- Lockable with a padlock
- Integrated venting when closed
- Your company name can be cast into the cover upon request
- **179** and **179CI** have female threads
- **179M** and **179MCI** have male threads

## Construction Details

### 179 & 179M

- Aluminum body
- Aluminum cap
- Zinc plated steel hinge pin

### 179CI & 179MCI

- Cast iron (powder coated black) body
- Cast iron (powder coated black) cap
- Zinc plated steel hinge pin



Item Number	Material	Size	Weight (lbs)
179--0100 AC	Aluminum	2"	0.75
179--0200 AC	Aluminum	2½"	1.0
179--0300 AC	Aluminum	3"	1.0
179--0400 AC	Aluminum	4"	2.0
179M--0100 AC	Aluminum	2"	0.75
179M--0200 AC	Aluminum	2½"	1.25
179CI-0100 AC	Cast iron	2"	2.50
179MCI0100 AC	Cast iron	2"	2.75

570 E. 7th Street, P.O. Box 238 | Dubuque, IA 52004-0238

t. 563.583.5701 | 800.553.4840 | f. 563.583.5028

[www.morbros.com](http://www.morbros.com)

# Model 178 Threaded Style Fill Cap

## Application

The 178 series tight seal threaded style fill cap is used for the fill port of small storage tanks. It is lockable with a padlock. The 178 iron caps are powder coated for a more durable finish.

The 178DT is made for a drop tube with 2" straight pipe threads and Buna-N gasket. The 178GSP is labeled "Gauge Stick Port."

Item Number	A	B	C	Weight
178--0100 AC	2"	IR	IR	2.0
178--0200 AC	2"	IR	BR	2.0
178--0300 AC	2"	BR	IR	2.0
178--0400 AC	2"	BR	BR	2.25
178--1200 AC	3"	BR	BR	4.25
178--1600 AC	4"	BR	BR	7.0
178AL-0900 AC	3"	AL	AL	1.54
178AL-1300 AC	4"	AL	AL	2.44
178DT-0300 AC	2"	BR	IR	2.0
178DT-0400 AC	2"	BR	BR	2.25
178GSP0100 AC	2"	BR	AL	1.0

### SPECIFICATION OPTIONS:

**A**—Size (inches)  
**B**—Body: Brass (BR), Iron (IR), AL (Aluminum)  
**C**—Cap: Brass (BR), Iron (IR), AL (Aluminum)  
**Weight**—Shipping weight (lbs)



Fig. 178 (2")



Fig. 178 (2")



Fig. 178AL (4")