



Application for Plan Review

Application # _____ - _____

Date Received: _____ Received By: _____

Name of Project: Revels Turf & Tractor

Physical Address of Project: 5118 Rawls Church Road

Fuquay Varina, NC 27526

Plans Submitted By: Revels Turf & Tractor

Project Phone: (919)- 880 - 5531

Contact Person/Address: Brandon Revels

5118 Rawls Church Road

Fuquay Varina, NC 27526

Contact Email: brevels@revelstractor.com

Contact Phone: (919)- 880 - 5531 (____)-____-____

Contractor's Name/Info: Revels Turf & Tractor

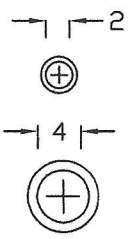
5118 Rawls Church Road

Fuquay Varina, NC 27526

Contractor's Phone: (919)- 880 - 5531

- Plans that are submitted will be reviewed as quickly as possible with an average time of review between 7-10 working days.
- Status checks may be conducted on plan reviews by visiting the website <http://hteweb.harnett.org/Click2GovBP/Index.jsp> or by calling the Harnett County Central Permitting Office (910-893-7525, Option #2), or the Harnett County Fire Marshal's Office (910-893-7580).
- Approved plans must be picked up from the Central Permitting Office and all fees paid before any required inspections can be conducted.

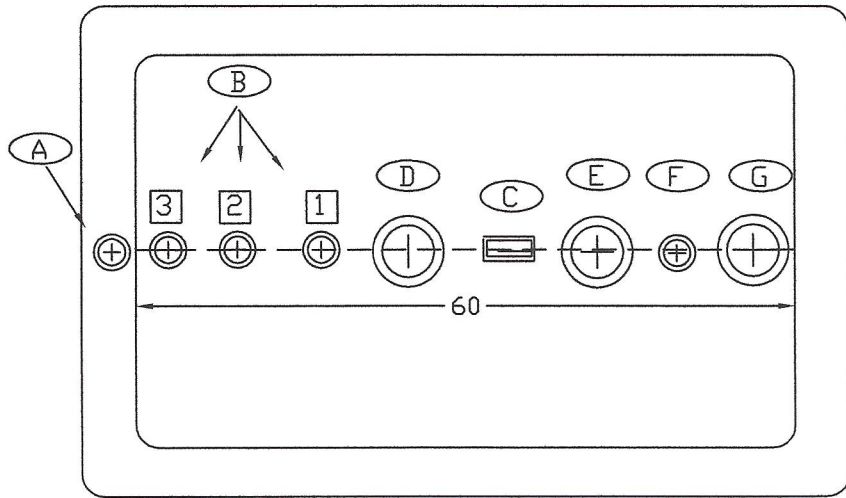
Fireguard Protected Tank



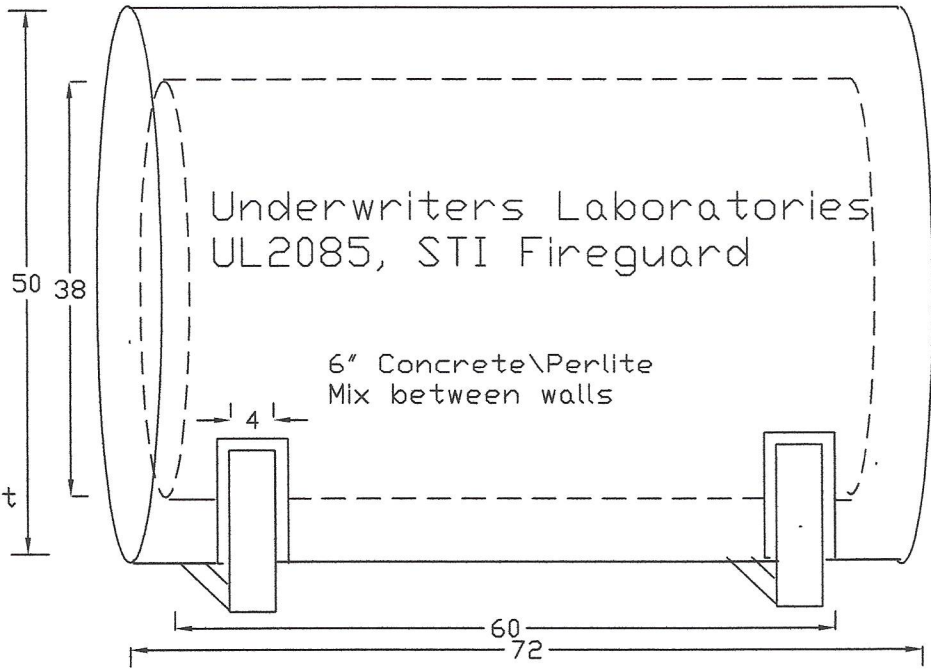
Tank Information			
ZONE	REV	DESCRIPTION	APPROVED


JULY 2023

FINAL APPROVED DRAWING
BY: _____
DATE: _____



- (A) Interstitial Monitoring
- (B) ③ 2" Opening
② 2" Opening
① 2" Opening
- (C) Lift Lug
- (D) Primary E Vent
- (E) Secondary E Vent
- (F) Atmospheric Vent
- (G) 4" Fill



 Pee Dee Tank	300 Fireguard Tank		
	Fireguard 300 Gallon Tank, Standard Openings, UL Approved Saddles, White Urethane Top Coat, UL2085 Listed, Approx weight 2800 lbs		
1333 North Douglas St Florence, SC 29501 Telephone (843) 669-3381 Fax (843) 664-9118	UL2085 Listed	For Stationery Use Only	REV
SCALE	PLM	SHEET	

SAVE THESE INSTRUCTIONS

RP-10 Rotary Hand Pump for Fuel and Petroleum

Owner's Manual



5252 East 36th Street North
Wichita, KS USA 67220-3205
TEL: 316-686-7361
FAX: 316-686-6746

GREAT PLAINS INDUSTRIES, INC.

"A Great Plains Ventures Subsidiary"

www.gpi.net

1-800-835-0113

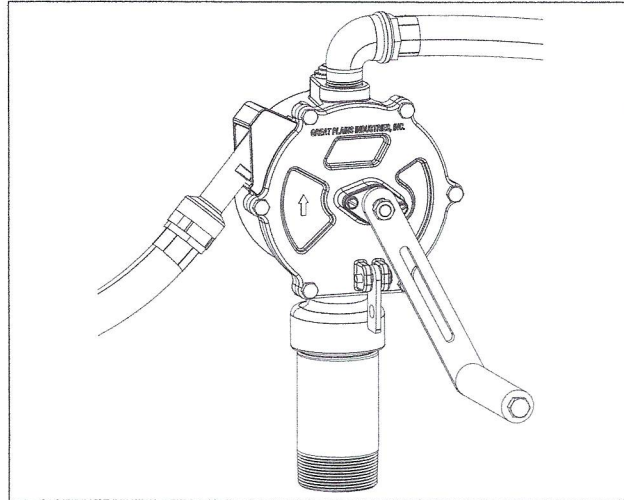


STOP

**DO NOT RETURN
THIS PRODUCT
TO THE STORE!**

Please contact GPI before returning any product. If you are missing parts or experience problems with your installation, our Customer Support Department will be happy to assist you.

GPI Customer Support
800-835-0113 or
316-686-7361



WARNING

This product shall not be used for pumping fuel or other liquids into aircraft.

GENERAL INFORMATION

The RP-10 Rotary Hand pump is designed for use with gasoline (up to 15% alcohol blends such as E15), diesel fuel (up to 20% biodiesel blends such as B20), kerosene and up to medium weight oils. These self-priming pumps deliver up to 10 gallons (38 litres) per 100 revolutions and are designed for use on a tank with a 2-inch bung. They are equipped with an anti-siphon vent to prevent possible tank siphoning. Do not use the RP-10 pump with chemicals.

Safety Instructions

Observe standard safety precautions when handling fuel.

- Keep away from open flame or spark.
- Do not refuel vehicles or equipment with engines running or while equipment engine is hot.
- Do not smoke while refueling.

INSTALLATION

Before installation, clean the tank interior of dirt and foreign material. Wrap all threads that are exposed to liquids with 3 to 4 turns of thread tape or a thread-sealing compound approved for use with petroleum fuels. Remove protective covers and plugs.

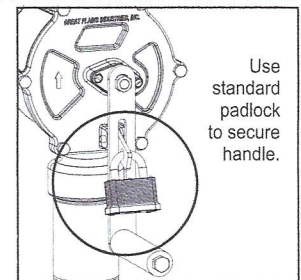
1. Hand-tighten the riser on to the tank bung.
2. Assemble the crank and handle. Then snugly tighten the crank on-to the shaft. Reference the Illustrated Parts Drawing for details.
3. Screw the suction pipe into the pump inlet.
4. Extend the suction pipe to its full length. Insert it through the riser and into the tank. Adjust the suction pipe to the length needed to rest on the tank bottom. If tank debris is a potential problem, raise the end of the suction pipe 2 to 3 inches.
5. Screw the pump onto the riser. Tighten until snug.

To install the hose and nozzle, thread the elbow fitting into the pump outlet and tighten until snug. Hand-tighten the hose into the elbow until snug. Tighten the nozzle onto the hose fitting. Insert the nozzle into the hanger.

OPERATIONS

To dispense fuel, remove the nozzle from its hanger and insert into a tank. Pump fuel by rotating the crank in the direction of the arrow on the housing. After dispensing fuel, drain the hose and replace the nozzle in the hanger.

During daily use, this pump is essentially maintenance free. However, the pump should be inspected periodically for signs of leakage. If leaks are present or other problems occur, refer to the Troubleshooting Section.



SPECIFICATIONS

The Rotary Hand Pump is compatible with gasoline (up to 15% alcohol blends such as E15), diesel fuel (up to 20% biodiesel blends such as B20), kerosene and up to medium weight oils.

Construction:	Lightweight, die-cast aluminum housing. Stainless steel shaft. Nitrile seals. Cast iron rotor and carbon vanes. Built-in anti-siphon vent.
Pumping Capacity:	Up to 10 gallons (38 litres) per 100 revolutions
Inlet:	1-inch NPT female
Outlet:	3/4-inch NPT female
Shipping Weight:	17 lbs. (7.7 kg)
Hose and Nozzle:	3/4-inch x 8 foot (2.4m) Buna-N statically grounded hose. Aluminum Alloy unleaded nozzle
Suction Pipe:	Plastic, adjustable from 22 to 40 inches (55 to 102cm)

PARTS AND SERVICE

For warranty consideration, parts or other service information, please contact your local distributor or the GPI Customer Service Department, during normal business hours at:

1-800-835-0113

To obtain prompt, efficient service, be prepared with:

- the model number of your pump
- the serial number or manufacturing date code of your pump, and
- parts descriptions and numbers

Reference the Illustrated Parts List for specifics on parts. For warranty service, be prepared with your original sales slip or other evidence of purchase date.

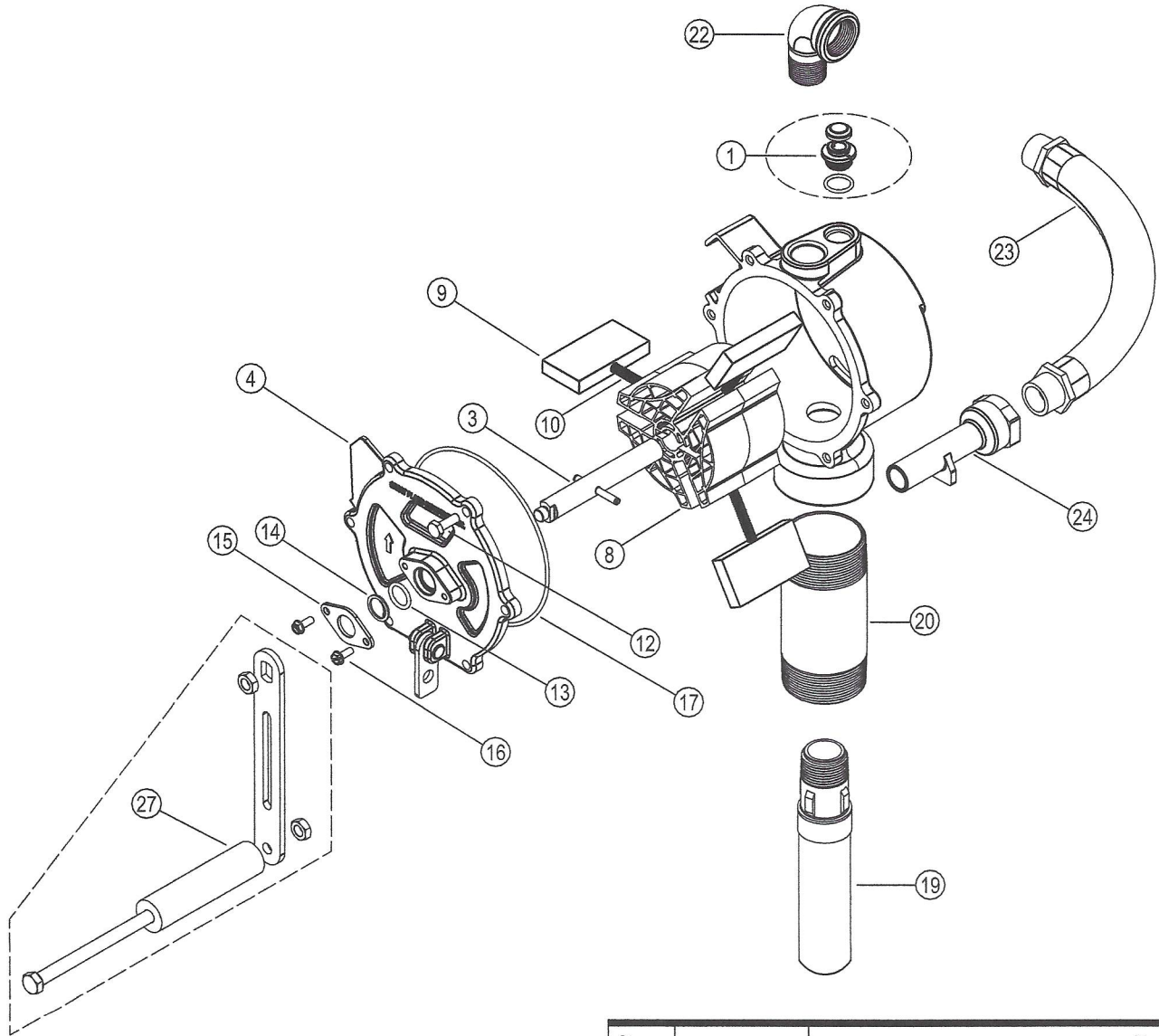
CAUTION

Do not return the pump without specific authority from the GPI Customer Service Department. Due to strict regulations governing transportation, handling, and disposal of hazardous or flammable liquids, GPI will not accept pumps for rework unless they are completely free of liquid residue.

TROUBLESHOOTING

SYMPTOM	PROBABLE CAUSE	CORRECTIVE ACTION
A. FLUID LEAKS AROUND SHAFT	<ol style="list-style-type: none"> 1. Retainer loose 2. O-ring worn 	<p>Tighten retainer screws.</p> <p>Check shaft O-ring for excessive wear. Replace Shaft Seal O-ring, if necessary.</p>
B. FLUID LEAKS AT ANTI-SIPHON VENT	<ol style="list-style-type: none"> 1. Anti-siphon vent or O-ring damaged 	<p>Remove vent cap. Loosen vent by turning counterclockwise. Remove vent and O-ring. Clean. To replace, seat O-ring on vent and screw vent into place until bottomed out. Replace vent cap.</p>
C. LOW FLOWRATE	<ol style="list-style-type: none"> 1. Internal parts worn or debris in vane cavity 2. Vanes cracked 	<p>Remove coverplate and inspect for wear on vanes, coverplate, and all inside housing surfaces. Replace any scored parts.</p> <p>Remove coverplate and inspect for chips or cracks on vanes. If necessary, replace vanes.</p>
D. PUMP FAILS TO PUMP	<ol style="list-style-type: none"> 1. Suction pipe leak 2. Internal parts worn or debris in vane cavity 3. Vanes cracked 	<p>Remove pump from riser. Inspect the suction pipe for wear or damage. Replace, as necessary, and install pump on tank.</p> <p>Remove coverplate and inspect for wear on vanes, coverplate, and all inside housing surfaces. Replace any scored parts.</p> <p>Remove coverplate and inspect for chips or cracks on vanes. If necessary, install Overhaul Kit or replace vanes.</p>
E. HANDLE TURNS HARD OR PUMP SEIZED	<ol style="list-style-type: none"> 1. Debris in vane cavity 2. Internal parts worn 	<p>Remove pump from tank. Remove coverplate and inspect for debris in cavity. Clean cavity, vanes, and rotor. Flush contamination from tank. Assemble and install pump.</p> <p>Remove pump from tank. Remove coverplate and inspect for damaged necessary, install Overhaul Kit or replace vanes.</p>
F. VANES STICKING	<ol style="list-style-type: none"> 1. Debris in vane cavity 	<p>Remove coverplate. Use emery cloth to remove debris or corrosion in vane slots. Apply lubricant (WD-40®) if needed.</p>

ILLUSTRATED PARTS LIST



Kits and Accessories

- A** 123501-1 Shaft Seal Kit includes O-ring, back-up ring, and seal.
- B** 123503-1 Overhaul Kit includes vanes, springs, and Shaft Seal Kit.
- 123505-3 Hardware Kit
- 115527-2 Suction Pipe Extension, 15 inches or 38.1cm.

Item No.	Part No.	Description	No. Req'd.
1	123504-1	Anti-Siphon Vent Kit.....	1
3	123507-1	Shaft Assembly Kit.....	1
4	123008-1	Coverplate	1
8	123509-1	Rotor with Springs Kit.....	1
9	123011-1	Vane or (Kit B).....	3
10	123012-1	Spring or (Kit B)	3
12	904004-16	Screw, 1/4-20 x 3/4".....	6
13	901003-63	O-Ring or (Kit A or B)	1
14	901002-58	Back-up Ring or (Kit A or B)	1
15	123013-1	Retainer	1
16	904004-60	Retainer Screws	2
17	901003-64	O-Ring or (Kit A)	1
19	110100-1	Suction Pipe Assembly	1
20	906006-06	Pipe Nipple, 2" NPT x 5".....	1
22	904004-73	Elbow Fitting	1
23	114045-1	Hose Assembly	1
24	114047-1	Metal Nozzle	1
	114036-1	Plastic Nozzle	1
27	123506-1	Crank Assembly Kit	1



Limited Warranty Policy

Great Plains Industries, Inc. (GPI) hereby provides a limited warranty against defects in material and workmanship on all products manufactured by GPI. The warranty period shall begin on the date of purchase confirmed with the original purchase receipt or, if not available, the date of manufacture. Manufacturer's sole obligation under the following warranties will be limited to either, at Manufacturer's option, replacing or repairing defective goods. If the product is no longer available, replacement may be made with a similar product of equal or greater value. Buyer's exclusive remedy for breach of any such warranties will be enforcement of such obligations of Manufacturer. The warranty shall extend to the purchaser of this product and to any person to whom such product is transferred during the warranty period.

Warranty shall not apply if:

The product has been subjected to neglect, misuse, abuse or damage or has been installed or operated other than in accordance with the manufacturer's operating instructions or the product has been altered or modified outside the warrantor's duly appointed representative.

Product components considered wear items, i.e. vanes, etc., are NOT included within the scope of this warranty.

Charges for shipping and insuring packages to GPI are the customer's responsibility. GPI will ship the warranted product back to the customer via ground shipping free of charge for shipments within the United States. International shipping charges and customs fees to and from GPI are the customer's responsibility.

GREAT PLAINS INDUSTRIES, INC., EXCLUDES LIABILITY UNDER THIS WARRANTY FOR DIRECT, INDIRECT, INCIDENTAL AND CONSEQUENTIAL DAMAGES INCURRED IN THE USE OR LOSS OF USE OF THE PRODUCT WARRANTED HEREUNDER.

THE COMPANY HERewith EXPRESSLY DISCLAIMS ANY WARRANTY OF MERCHANTABILITY OR FITNESS FOR ANY PARTICULAR PURPOSE OTHER THAN FOR WHICH IT WAS DESIGNED.

THIS WARRANTY GIVES YOU SPECIFIC RIGHTS AND YOU MAY ALSO HAVE OTHER RIGHTS WHICH VARY FROM U.S. STATE TO U.S. STATE.

In compliance with MAGNUSON MOSS CONSUMER WARRANTY ACT - PART 702 (governs the resale availability of the warranty terms)

To obtain warranty service contact the GPI Product Support Department:

316-686-7361 or 800-835-0113

GPI will guide you through a product troubleshooting process to determine the appropriate corrective actions.

GPI is a registered trademark of Great Plains Industries, Inc. © 2009 by GREAT PLAINS INDUSTRIES, INC., Wichita, KS

Printed in U.S.A.

06/21/2022



The following respective warranty periods apply:



FIVE-YEAR WARRANTY applies to the following product families:

GPRO® Fluid Transfer Pumps:
PRO20-115, PRO20-230, V25-012, V25-024, PRO35-115

GPRO® Remote Dispensers:
QM240-RD, QM150-RD

GPRO® Fuel Meters: QM40

GPI® Fuel Meters: M30



TWO-YEAR WARRANTY applies to the following product families:

GPI® Fluid Transfer Pumps:
G8P, EZ8, M-150S, M-180S, M-240S, G20-012*, M-1115S, P-200, PA-200, P-120H, P-200H, PA-120H, PA-200H, HP-100, HP-90, DP-20, RP-10

GPI® Fluid Meters:
01A, 01N, 03A, 03N, FM-300H, LM51DN, LM-300



ONE-YEAR WARRANTY applies to the following products:

GPI® Oil Transfer Pumps:
L 5016, L 5116, L 5132



90-DAY WARRANTY applies to the following products:

GPI® Fluid Transfer Hand Pumps:
RP-5, BP-12, CP-5, LP-50

90-DAY WARRANTY applies to Spare Parts, Kits and Accessories including Nozzles*, Hoses, Swivels, Vent Caps, Filter Adapters, etc.

90-DAY WARRANTY applies to Factory Repairs from repair date or the balance of the original warranty whichever is longer.

**Extended warranty coverage available on select products. Requires registration of product with manufacturer. Visit gpi.net/product-registration/*



COMPANY HEADQUARTERS:

5252 East 36th Street North
Wichita, KS, USA 67220-3205

LEARN MORE: GPIpumps.com

Revision Date: June 29, 2021
CORP-1083 Rev B_Limited Warranty Policy

Rev. A 921462-07

Model 245 Emergency Vents

Application

This lightweight, spring-loaded emergency vent (pressure relief only) is used on aboveground storage tanks, as a code requirement, to help prevent the tank from becoming over-pressurized and possibly rupturing if ever exposed to fire. This vent must be used in conjunction with a "normal vent." Correct application of this vent requires proper vent size and selection for the tank system in order to meet the specific venting capacity.

Materials of Construction

- Body... Aluminum
- Cover... Aluminum
- Seat... FKM
- Bolt... Zinc plated steel

Code Compliance

When properly sized for the tank, this vent will conform to the requirements of the International Fire Code; National Fire Code of Canada; National Fire Protection Agency—NFPA 30, 30A, 31, 37, 110; Petroleum Equipment Institute—PEI RP200, PEI RP800; Underwriters Laboratories Inc.—UL-142, UL-2085, UL-2244; Underwriters Laboratories of Canada—CAN/ULC S601, CAN/ULC S602, CAN/ULC S652

Approvals

Underwriters Laboratories Inc. UL-2583



SPECIFICATION SHEET



4" vent (245M)



4" vent (245F)



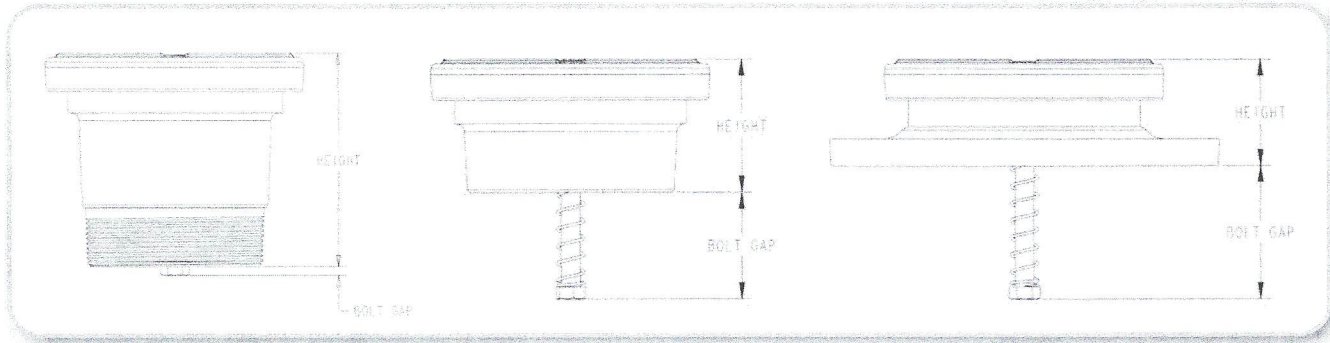
6" vent (245)

NOTE

Emergency vent should be set higher than the normal vent so the normal vent operates first.

WARNING: DO NOT FILL OR UNLOAD FUEL FROM A STORAGE TANK UNLESS IT IS CERTAIN THAT THE TANK VENTS WILL OPERATE PROPERLY. Morrison tank vents are designed only for use on shop fabricated atmospheric tanks which have been built and tested in accordance with UL 142, NFPA 30 & 30A, and API 650 and in accordance with all applicable local, state and federal laws. In normal operation, dust and debris can accumulate in vent openings and block air passages. Certain atmospheric conditions such as a sudden drop in temperature, below freezing temperatures, and freezing rain can cause moisture to enter the vent and freeze which can restrict internal movement of vent mechanisms and block air passages. All storage tank vent air passages must be completely free of restriction and all vent mechanisms must have free movement in order to insure proper operation. Any restriction of airflow can cause excessive pressure or vacuum to build up in the storage tank, which can result in structural damage to the tank, fuel spillage, property damage, fire, injury, and death. Monthly inspection, and immediate inspection during freezing conditions, by someone familiar with the proper operation of storage tank vents, is required to insure venting devices are functioning properly before filling or unloading a tank. Normal vents such as pressure vacuum and updraft vents for aboveground storage tanks should be sized according to NFPA 30 (2008) 21.4.3

245 part numbers and diagrams on next page...



Item Number	A	B	C	D	Overall Diameter	Height	Bolt Gap	Weight	Screen
245M-0200 AV	2"	31,917	M	8	3.00	1.50	1.60	0.50	
245MS-0200 AV	2"	24,069	M	8	3.00	1.50	1.60	0.50	S
245-0300 AV	3"	67,162		8	5.00	2.80	0.90	2.80	
245S-0300 AV	3"	56,241		8	5.00	2.80	0.90	2.80	S
245M-0300 AV	3"	67,162	M	8	5.00	3.60	< 1/4"	2.50	
245MS-0300 AV	3"	56,241	M	8	5.00	3.60	< 1/4"	2.50	S
245-0400 AV	4"	129,369		8	6.50	3.10	2.50	3.30	
245S-0400 AV	4"	115,086		8	6.50	3.10	2.50	3.30	S
245M-0400 AV	4"	129,369	M	8	6.00	5.40	< 1/4"	4.50	
245MS-0400 AV	4"	115,086	M	8	6.50	5.40	< 1/4"	4.50	S
245F-0400 AV †	4"	129,369	F	8	9.10	2.50	3.00	6.00	
245FS-0400 AV	4"	115,086	F	8	9.10	2.50	3.00	6.00	S
245-0600 AV	6"	331,750		8	8.50	3.40	2.60	5.50	
245S-0600 AV	6"	277,011		8	8.50	3.40	2.60	5.50	S
245M-0600 AV	6"	331,750	M	8	8.50	5.40	0.20	6.20	
245MS-0600 AV	6"	277,011	M	8	8.50	5.40	0.20	6.20	S
245F-0600 AV †	6"	331,750	F	8	11.00	2.90	3.20	9.10	
245FS-0600 AV	6"	277,011	F	8	11.00	2.90	3.20	9.10	S
245-0800 AV	8"	527,441		8	10.50	4.50	1.50	9.20	
245M-0800 AV	8"	527,441	M	8	10.50	5.70	0.40	10.10	
245F-0800 AV †	8"	527,441	F	8	13.50	3.30	2.90	14.50	
245F-1000 AV †	10"	972,110	F	8	16.00	2.80	6.00	20.00	

SPECIFICATION OPTIONS:

- A—Size (inches)
- B—Venting capacity/SCFH
- C—Mounting connection: Male N.P.T. (M), Female N.P.T. (BLANK), Flanged (F)
- D—Pressure settings: 8oz/in² (pressure required to open vent)
- Diameter—Dimension across vent (inches)
- Height—Dimension from base to top when closed (inches)
- Bolt Gap—Dimension from base to bottom of bolt
- Weight—Shipping weight (lbs)
- Screen (3 mesh stainless steel)—Yes (S), No (blank)

*Refer to Price List for BSP options.
 † Indicates model is available in a kit.

Size	Item Number	Flanged Kits	Bolt Size
4"	245F-0408 AK	Includes 245F-0400 AV vent, flange adaptor, gasket, and (8) nuts/bolts	0.625" dia; 2" length
6"	245F-0608 AK	Includes 245F-0600 AV vent, flange adaptor, gasket, and (8) nuts/bolts	0.75" dia; 2.75" length
8"	245F-0808 AK	Includes 245F-0800 AV vent, flange adaptor, gasket, and (8) nuts/bolts	0.75" dia; 2.75" length
10"	245F-1008 AK	Includes 245F-1000 AV vent, flange adaptor, gasket, and (12) nuts/bolts	0.875" dia; 3" length



Model 179 Series Hinged Style Fill Cap

SPECIFICATION SHEET

Designed for tank filling applications where a tight fill connection is not required. Threaded body installs onto riser pipe or directly into tank bung.

Features

- Easy to open and close hinged operation
- Positive stop to prevent cover from contacting tank
- Lockable with a padlock
- Integrated venting when closed
- Your company name can be cast into the cover upon request
- **179** and **179CI** have female threads
- **179M** and **179MCI** have male threads

Construction Details

179 & 179M

- Aluminum body
- Aluminum cap
- Zinc plated steel hinge pin

179CI & 179MCI

- Cast iron (powder coated black) body
- Cast iron (powder coated black) cap
- Zinc plated steel hinge pin



Item Number	Material	Size	Weight (lbs)
179---0100 AC	Aluminum	2"	0.75
179---0200 AC	Aluminum	2½"	1.0
179---0300 AC	Aluminum	3"	1.0
179---0400 AC	Aluminum	4"	2.0
179M--0100 AC	Aluminum	2"	0.75
179M--0200 AC	Aluminum	2½"	1.25
179CI-0100 AC	Cast iron	2"	2.50
179MCI0100 AC	Cast iron	2"	2.75

570 E. 7th Street, P.O. Box 238 | Dubuque, IA 52004-0238
 t. 563.583.5701 | 800.553.4840 | f. 563.583.5028

www.morbros.com

M Model 178 Threaded Style Fill Cap

SPECIFICATION SHEET

Application

The 178 series tight seal threaded style fill cap is used for the fill port of small storage tanks. It is lockable with a padlock. The 178 iron caps are powder coated for a more durable finish.

The 178DT is made for a drop tube with 2" straight pipe threads and Buna-N gasket. The 178GSP is labeled "Gauge Stick Port."

Item Number	A	B	C	Weight
178--0100 AC	2"	IR	IR	2.0
178--0200 AC	2"	IR	BR	2.0
178--0300 AC	2"	BR	IR	2.0
178--0400 AC	2"	BR	BR	2.25
178--1200 AC	3"	BR	BR	4.25
178--1600 AC	4"	BR	BR	7.0
178AL-0900 AC	3"	AL	AL	1.54
178AL-1300 AC	4"	AL	AL	2.44
178DT-0300 AC	2"	BR	IR	2.0
178DT-0400 AC	2"	BR	BR	2.25
178GSP0100 AC	2"	BR	AL	1.0

SPECIFICATION OPTIONS:

A—Size (inches)
 B—Body: Brass (BR), Iron (IR), AL (Aluminum)
 C—Cap: Brass (BR), Iron (IR), AL (Aluminum)
 Weight—Shipping weight (lbs)



Fig. 178 (2'')

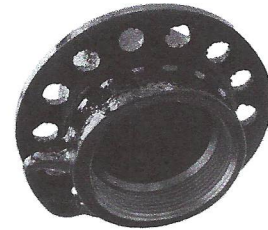


Fig. 178 (2'')

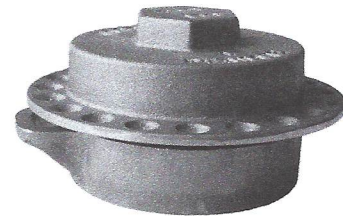


Fig. 178AL (4'')

570 E. 7th Street, P.O. Box 238 | Dubuque, IA 52004-0238
 t. 563.583.5701 | 800.553.4840 | f. 563.583.5028

www.morbros.com