



CROWLEY  
Professional Engineers  
247 South Pine Bluff Road, Suite 200, Cary, NC 27513  
919-485-5575  
NC Firm # CA000173, TX Firm # 02172, VA Reg. # 00000000

NO.	DATE	DESCRIPTION
1	11/11/11	PRELIMINARY PLAN
2	11/11/11	REVISED PLAN
3	11/11/11	REVISED PLAN
4	11/11/11	REVISED PLAN
5	11/11/11	REVISED PLAN
6	11/11/11	REVISED PLAN
7	11/11/11	REVISED PLAN
8	11/11/11	REVISED PLAN
9	11/11/11	REVISED PLAN
10	11/11/11	REVISED PLAN
11	11/11/11	REVISED PLAN
12	11/11/11	REVISED PLAN
13	11/11/11	REVISED PLAN
14	11/11/11	REVISED PLAN
15	11/11/11	REVISED PLAN
16	11/11/11	REVISED PLAN
17	11/11/11	REVISED PLAN
18	11/11/11	REVISED PLAN
19	11/11/11	REVISED PLAN
20	11/11/11	REVISED PLAN
21	11/11/11	REVISED PLAN
22	11/11/11	REVISED PLAN
23	11/11/11	REVISED PLAN
24	11/11/11	REVISED PLAN
25	11/11/11	REVISED PLAN
26	11/11/11	REVISED PLAN
27	11/11/11	REVISED PLAN
28	11/11/11	REVISED PLAN
29	11/11/11	REVISED PLAN
30	11/11/11	REVISED PLAN
31	11/11/11	REVISED PLAN
32	11/11/11	REVISED PLAN
33	11/11/11	REVISED PLAN
34	11/11/11	REVISED PLAN
35	11/11/11	REVISED PLAN
36	11/11/11	REVISED PLAN
37	11/11/11	REVISED PLAN
38	11/11/11	REVISED PLAN
39	11/11/11	REVISED PLAN
40	11/11/11	REVISED PLAN
41	11/11/11	REVISED PLAN
42	11/11/11	REVISED PLAN
43	11/11/11	REVISED PLAN
44	11/11/11	REVISED PLAN
45	11/11/11	REVISED PLAN
46	11/11/11	REVISED PLAN
47	11/11/11	REVISED PLAN
48	11/11/11	REVISED PLAN
49	11/11/11	REVISED PLAN
50	11/11/11	REVISED PLAN
51	11/11/11	REVISED PLAN
52	11/11/11	REVISED PLAN
53	11/11/11	REVISED PLAN
54	11/11/11	REVISED PLAN
55	11/11/11	REVISED PLAN
56	11/11/11	REVISED PLAN
57	11/11/11	REVISED PLAN
58	11/11/11	REVISED PLAN
59	11/11/11	REVISED PLAN
60	11/11/11	REVISED PLAN
61	11/11/11	REVISED PLAN
62	11/11/11	REVISED PLAN
63	11/11/11	REVISED PLAN
64	11/11/11	REVISED PLAN
65	11/11/11	REVISED PLAN
66	11/11/11	REVISED PLAN
67	11/11/11	REVISED PLAN
68	11/11/11	REVISED PLAN
69	11/11/11	REVISED PLAN
70	11/11/11	REVISED PLAN
71	11/11/11	REVISED PLAN
72	11/11/11	REVISED PLAN
73	11/11/11	REVISED PLAN
74	11/11/11	REVISED PLAN
75	11/11/11	REVISED PLAN
76	11/11/11	REVISED PLAN
77	11/11/11	REVISED PLAN
78	11/11/11	REVISED PLAN
79	11/11/11	REVISED PLAN
80	11/11/11	REVISED PLAN
81	11/11/11	REVISED PLAN
82	11/11/11	REVISED PLAN
83	11/11/11	REVISED PLAN
84	11/11/11	REVISED PLAN
85	11/11/11	REVISED PLAN
86	11/11/11	REVISED PLAN
87	11/11/11	REVISED PLAN
88	11/11/11	REVISED PLAN
89	11/11/11	REVISED PLAN
90	11/11/11	REVISED PLAN
91	11/11/11	REVISED PLAN
92	11/11/11	REVISED PLAN
93	11/11/11	REVISED PLAN
94	11/11/11	REVISED PLAN
95	11/11/11	REVISED PLAN
96	11/11/11	REVISED PLAN
97	11/11/11	REVISED PLAN
98	11/11/11	REVISED PLAN
99	11/11/11	REVISED PLAN
100	11/11/11	REVISED PLAN



Existing Conditions Plan  
RV Pro's, Inc.  
Bud Hawkins Road  
Dunn, Hamlet County, North Carolina

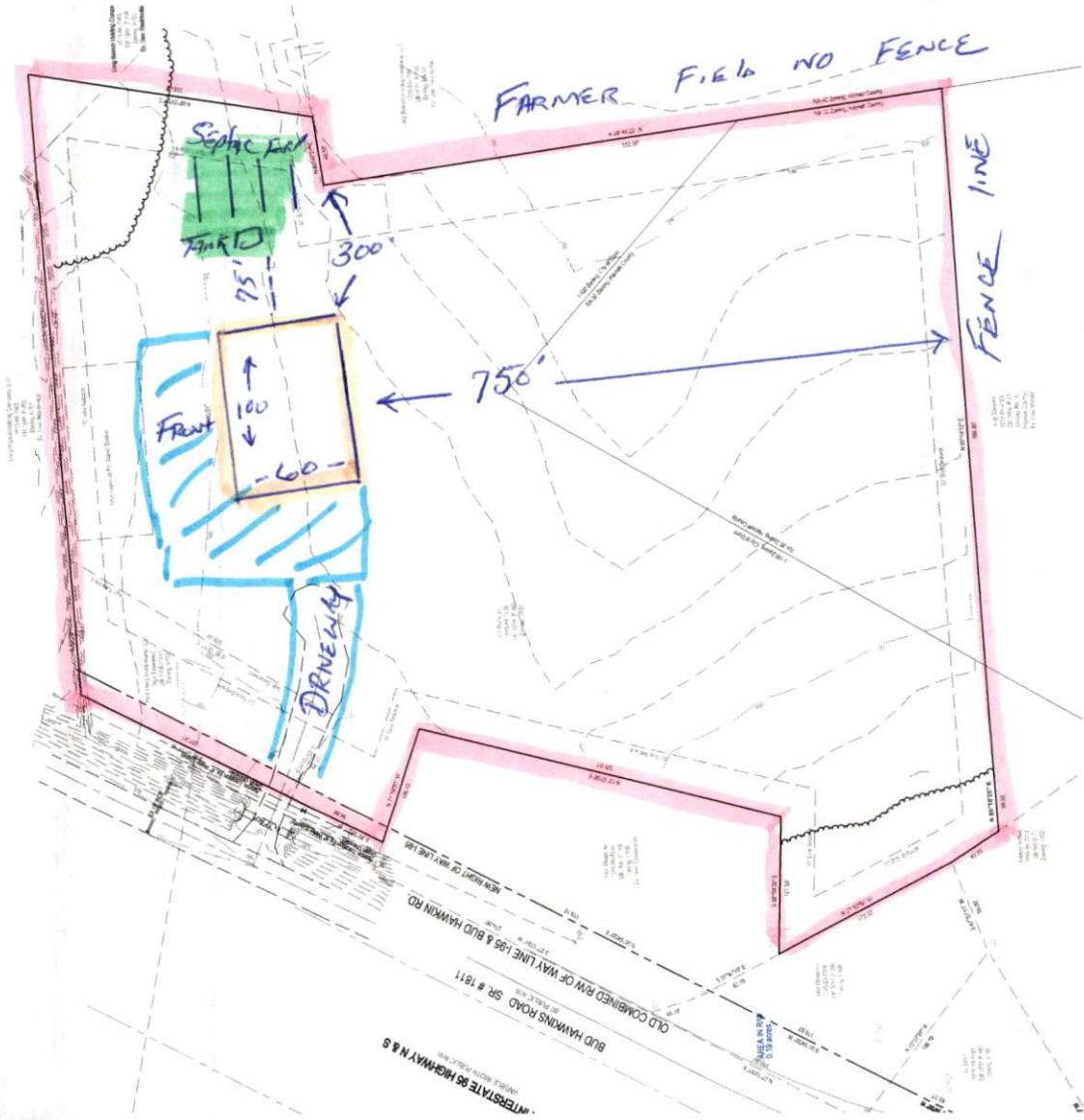
Job No. Check  
C1.1  
Dwg No.

OPTION 2

PINK FLAG = Property line  
ORANGE STAKE / LINE  
BUILDING

PARKING lot

Septic 75' from Rear left CORNER  
4-150' lines





CROWLEY  
Professional Engineers  
247 South Main Street, Raleigh, NC 27601  
NC Firm # 4488, 11 Firm # 12813, VA 40000000

NO.	DATE	REVISION DESCRIPTION
1	11/11/11	PRELIMINARY PLAN
2	11/11/11	REVISED
3	11/11/11	REVISED
4	11/11/11	REVISED
5	11/11/11	REVISED
6	11/11/11	REVISED
7	11/11/11	REVISED
8	11/11/11	REVISED
9	11/11/11	REVISED
10	11/11/11	REVISED
11	11/11/11	REVISED
12	11/11/11	REVISED
13	11/11/11	REVISED
14	11/11/11	REVISED
15	11/11/11	REVISED
16	11/11/11	REVISED
17	11/11/11	REVISED
18	11/11/11	REVISED
19	11/11/11	REVISED
20	11/11/11	REVISED



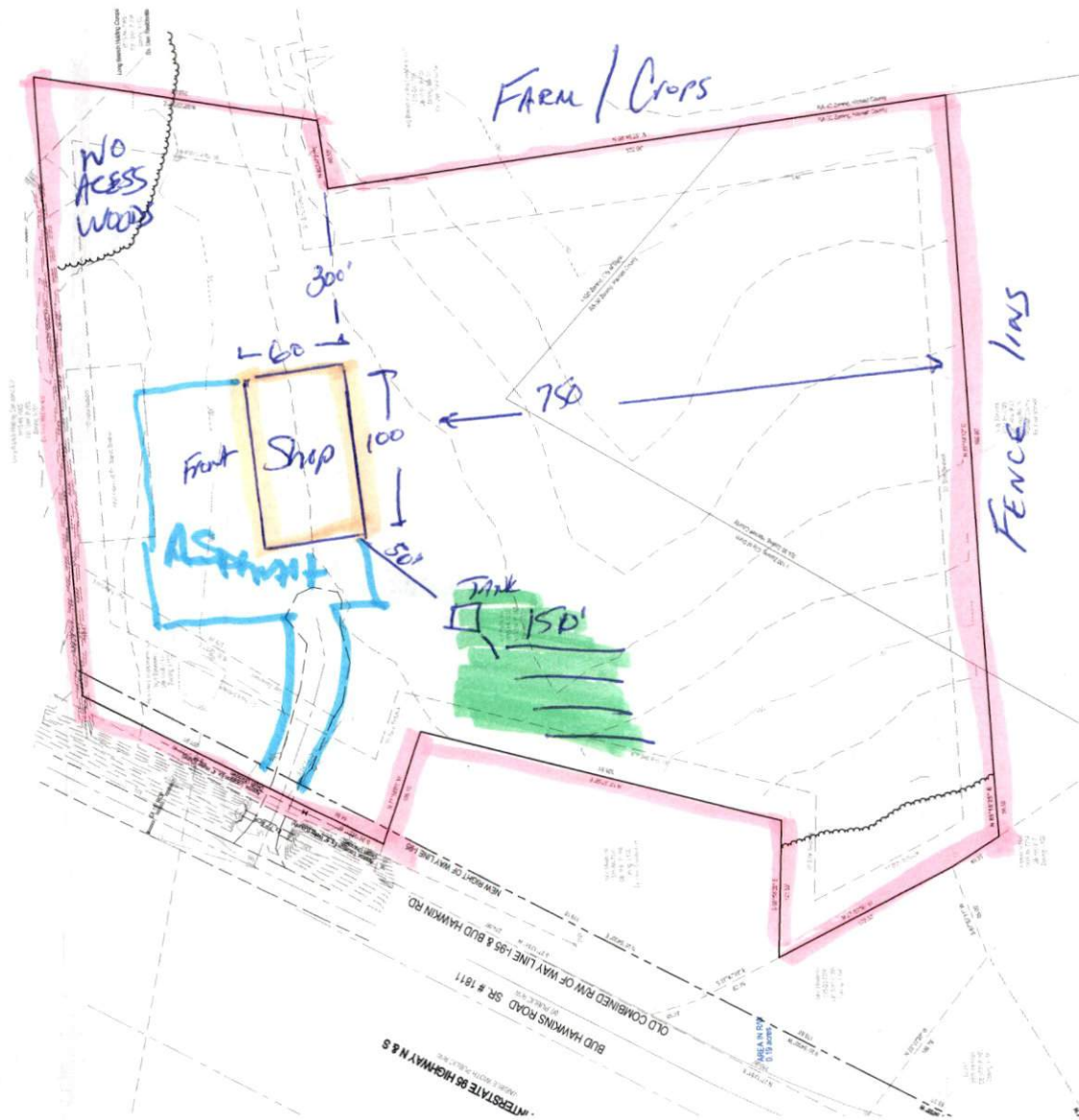
Existing Conditions Plan  
RV Pro's, Inc.  
Bud Hawkins Road  
Dunn, Hamett County, North Carolina

Job No. 01888  
Dwg No. C1.1

# OPTION 2



Property Marked Pink  
EVERY 50-75 FEET  
CORNERS 2x FLAGS ON PRE SURVEYED  
STAKES



Septic  
TANK  
50' To  
Rear Right  
Corner  
4 - 150' Lines