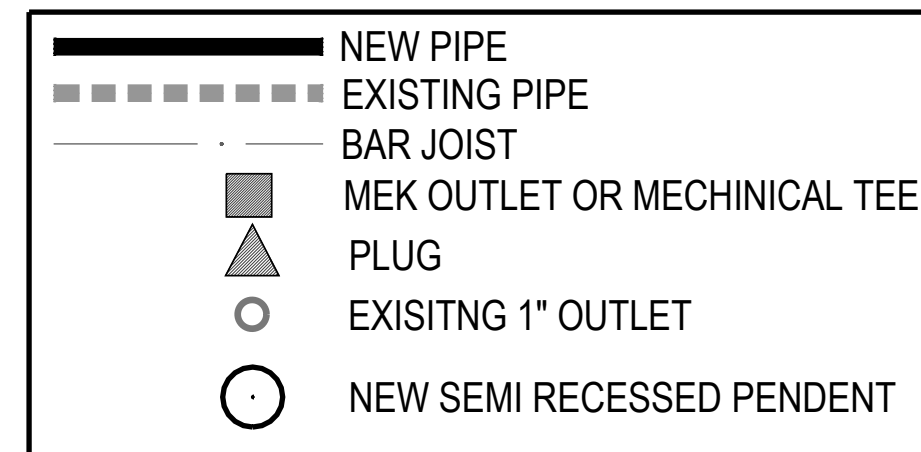


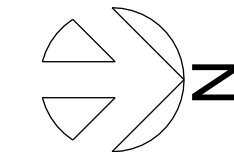
# GENERAL NOTES

- 1.) CFP (CAROLINA FIRE PROTECTION) IS TO MODIFY EXSITING WET PIPE SYSTEM BASED ON TENANT SPACE RENOVATION, PER NFPA 13, 2013 EDITION.
- 2.) ALL BREAKOVERS AND DROPS TO BE 1" SCHEDULE 40.
- 3.) ALL UNSUPPORTED BREAKOVERS SHALL NOT EXCEED 24".
- 4.) ALL AREAS IN WHICH PIPING IS INSTALLED SHALL BE HEATED AND MAINTAINED AT 40° F MINIMUM BY OWNER.
- 5.) ALL SPRINKLER PIPE USED SHALL BE 1" SCH 40
- 6.) ALL MATERIALS TO BE U.L. LISTED AS REQUIRED BY NFPA 13.
- 7.) SCOPE OF WORK: REPLACE (16) PENDENT SPRINKLERS WITH (16) UPRIGHTS ON SPRIG-UPS.

## LEGEND

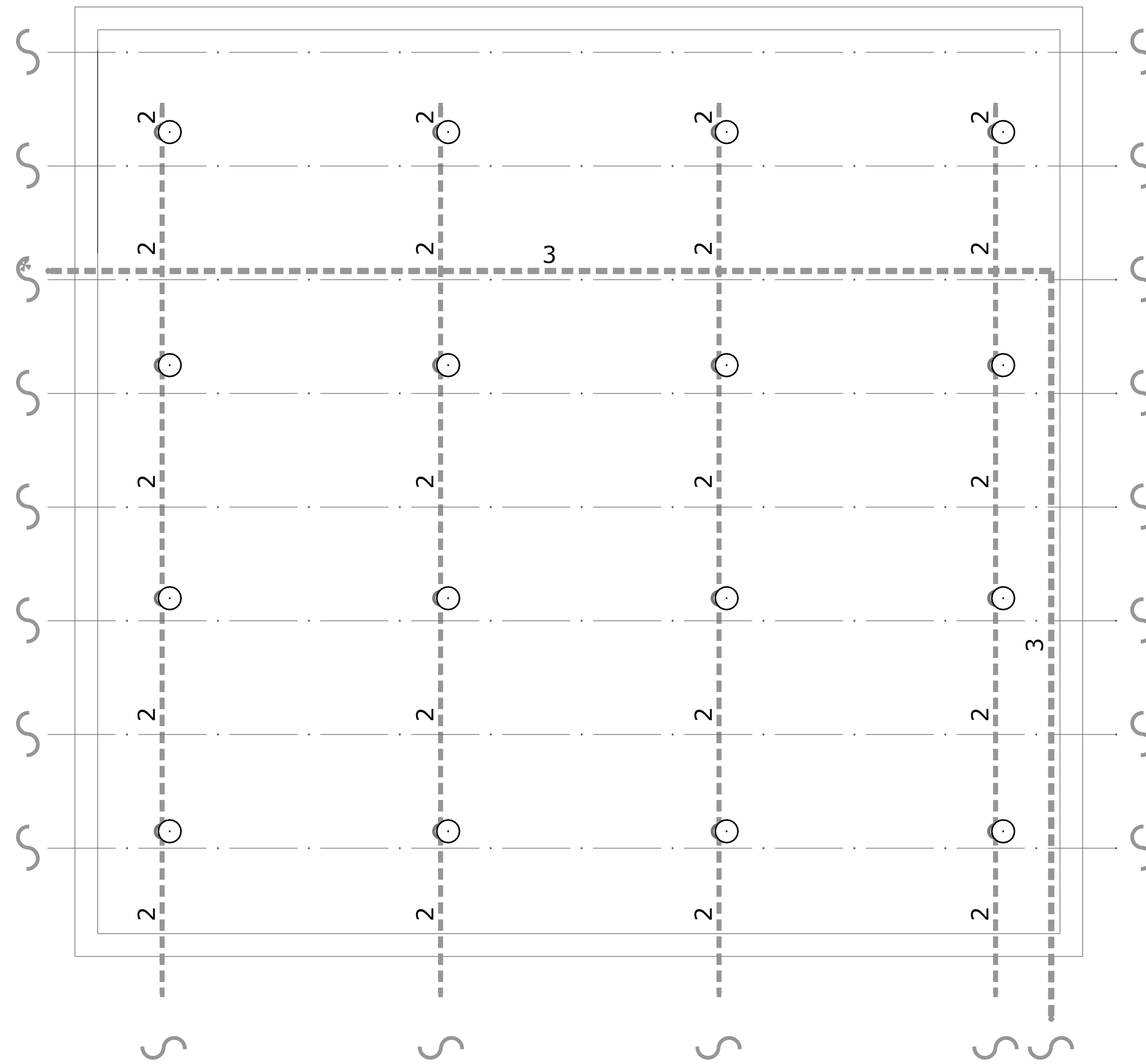


VICINITY MAP  
NOT TO SCALE



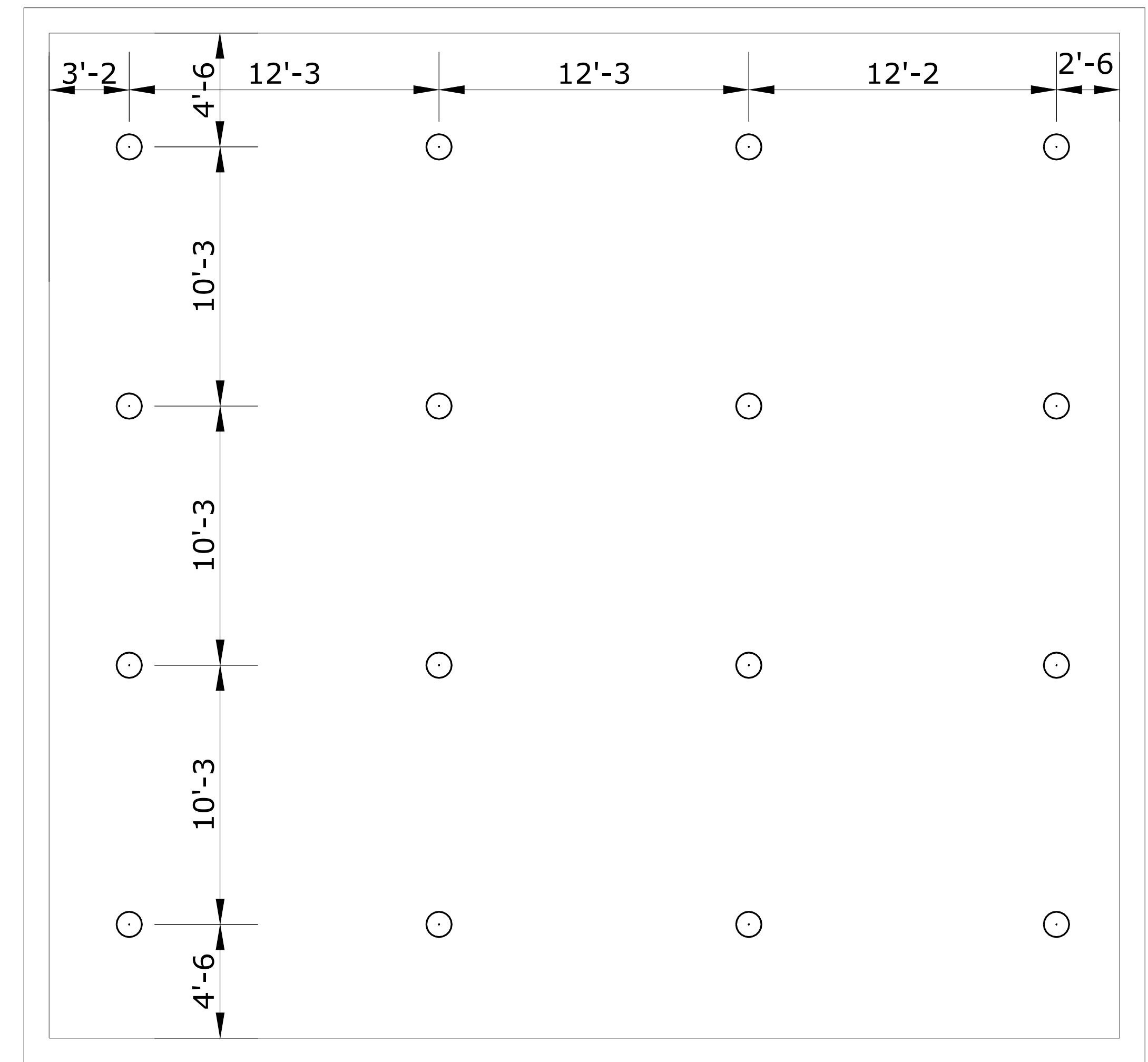
T.O.S: 20'-9  
B.O.B.J: 18'-4

B.O.P: 17'-6

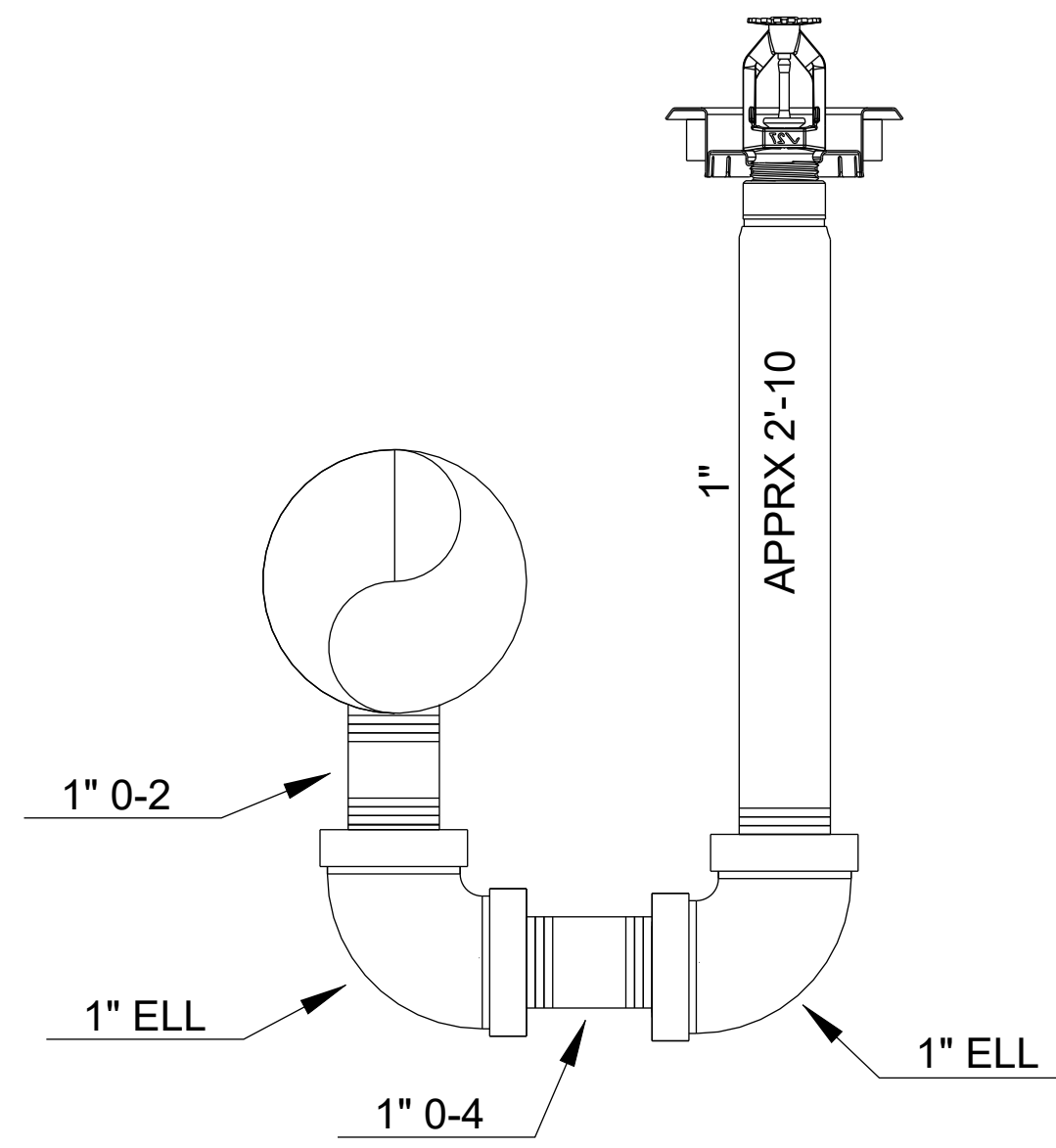


PIPING PLAN  
SCALE: 1/4"=1'-0"

T.O.S: 20'-9  
B.O.B.J: 18'-4



CEILING PLAN  
SCALE: 1/4"=1'-0"



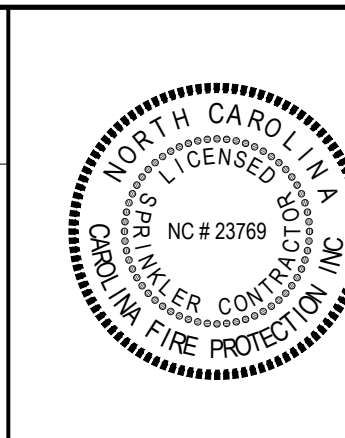
ARM-OVER DETAIL  
NOT TO SCALE

**IMPORTANT**  
In locations that are subject to freezing conditions, it is the owner's responsibility to provide heat throughout areas protected by wet pipe sprinkler systems and in enclosures for dry pipe, deluge or other types of valves controlling water supplies to sprinkler systems.  
This drawing including all information and design concept herein contained is the property of Carolina Fire Protection Company, Inc. and is loaned upon express conditions that the same be returned to CFP, Inc. upon request. All information contained herein shall be treated as secret, and confidential; no reproduction of this drawing or any part thereof shall be made without written consent of CFP, Inc.

CONTRACT RESPONSIBILITIES	
ITEM	C.F.P./OTHERS
STREET WATER CONNECTION	N/A
UNDERGROUND WATER MAINS	N/A
EXCAVATIONS	N/A
BACKFILL	N/A
PAINTING	N/A

SYMBOLS	
	CEILING HT. ABOVE REF.
	FIRE HOSE ASSEMBLY
	FLOOR SWITCH (FS)
	MONITOR SWITCH
	ALARM VALVE (AV)
	DRY PIPE VALVE
	WATER CHECK VALVE
	CHECK VALVE
	THREADED CAP
	SCREENED PLUG
	PLUGGED CONNECTION

ABBREVIATIONS	
BOB	Bottom of Beam
BOD	Bottom of Deck
BOF	Bottom of Pipe
DO	Drill
HV	Hose Valve
N & C	Nipple and Cap
NTS	Not to Scale
OB	Open Bar Joist
PRV	Pressure Red. Valve
RM	Root Manifold
SP	Standpipe
TOP	Top of Beam
TOS	Top of Pipe
UNO	Unless Noted Otherwise



SPRINKLER SYMBOL DESCRIPTION									
SYMBOL	SIZE	MODEL	MAKE	SIN	FINISH	STYLE	TEMP	K-FACTOR	TOTAL
	1/2	SR	VICTAULIC	V2703	BRASS	UPRIGHT - SPRIG UP	155°	5.6	16
TOTAL SPRINKLERS SHOWN ON THIS SHEET									16
TOTAL SPRINKLERS REQUIRED ON THIS CONTRACT									16

**CAROLINA FIRE PROTECTION**  
4055 HODGES CHAPEL ROAD  
Dunn, N.C. 28334  
Phone (910) 892-1700  
Fax (910) 892-7322

CONTRACT NAME: NESSA STONE <b>NCSU COX HALL ROOM 508 &amp; 509</b> 2620 YARBROUGH DR RALEIGH, NC, 27695	
CONTRACT WITH: NCSU	UP-FIT
SYSTEM DESIGN DATA	
HAZARD CLASSIFICATION: -	SYSTEM AREA: - SQ. FT.
DESIGN DATA DENSITY: - GPM/SQ. FT.	COVERAGE: - SQ. FT./HEAD
AREA OF APPLICATION: - SQ. FT.	ALLOWANCES: - GPM
TOTAL SYSTEM: -	PSI AT: -
WATER SUPPLY: -	PSI RESIDUAL: -
INFORMATION: -	PSI W/ -
	GPM FLOWING

CHECKED BY: M:FORD  
DATE: 7-9-2024  
SCALE: 1/4" = 1"  
CONTRACT NO: 24G925  
DRAWN BY: SHAWN W  
DRAWING NO.  
FP 1 of 1