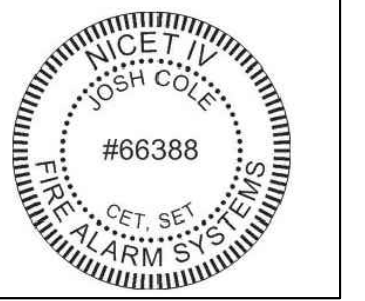


JUNIPER VILLAGE



Josh Cole
Operations Manager, SET,
CAT
Nicet IV Fire Alarms #66388
Nicet II Inspection and Testing of
Fire Alarm Systems
FCC GROL FRN#0029798212
NTS CAT Level 1
NC Fire/LV #16269-SP-FA/LV
NC Burglar #2419-CSA
SC F/A #FAC.13687
SC Burglar #BAC.13852



PROJECT DATA	
NAME:	JUNIPER VILLAGE APARTMENTS
ADDRESS:	PARKER LANE LILLINGTON, NC 27546
DESCRIPTION:	APARTMENT BUILDING
OCCUPANCY TYPE:	R-2
SPRINKLER SYSTEM:	YES

FIRE ALARM SYSTEM SUPPLIER	
NAME:	DIAMOND ELECTRONICS INC.
ADDRESS:	P.O. BOX 166 LOCUST, NC 28097
PHONE NUMBER:	704-888-0223
NC CONTRACTORS LICENSE #:	16269-SP-FA/LV
SC CONTRACTORS LICENSE #:	FAC.13687

INSTALLING CONTRACTOR	
NAME:	DIAMOND ELECTRONICS INC.
ADDRESS:	P.O. BOX 166 LOCUST, NC 28097
PHONE NUMBER:	704-888-0223
NC CONTRACTORS LICENSE #:	16269-SP-FA/LV

CENTRAL STATION MONITORING COMPANY	
NAME:	TO BE DETERMINED (SUPPLIED BY OTHERS)
ADDRESS:	###
PHONE NUMBER:	###
UL LISTING #:	###

SCOPE OF WORK
INSTALLATION OF A MANUAL FIRE ALARM SYSTEM FOR AN R-2 OCCUPANCY TO INCLUDE.

JOSH COLE-OPERATIONS MANAGER-QUALIFICATIONS:
Operations Manager, SET, CAT
Nicet IV Fire Alarms #66388
Nicet II Inspection and Testing of Fire Alarm Systems
FCC GROL FRN#0029798212
NTS CAT Level 1
NC Fire/LV #16269-SP-FA/LV
NC Burglar #2419-CSA
SC F/A #FAC.13687
SC Burglar #BAC.13852
ALSO FACTORY TRAINED FROM SILENT KNIGHT AND FIRE LITE BRANDS

APPLICABLE CODES/CODE ANALYSIS	
APPLICABLE CODES:	
NORTH CAROLINA BUILDING CODE	2018 EDITION
NORTH CAROLINA MECHANICAL CODE	2018 EDITION
NORTH CAROLINA PLUMBING CODE	2018 EDITION
NORTH CAROLINA ELECTRICAL CODE	2017 EDITION
INTERNATIONAL FIRE PREVENTION CODE (IFPC)	2015 EDITION
NATIONAL FIRE PROTECTION ASSOCIATION (NFPA 13)	2013 EDITION
NATIONAL FIRE PROTECTION ASSOCIATION (NFPA 72)	2013 EDITION
NATIONAL ELECTRIC CODE (NFPA 70)	2017 EDITION
ANSI A117.1 NC ACCESSIBILITY CODE	2009 EDITION

ALL DEVICES IN THE UNITS SHALL PRODUCE 75db AT THE PILLOW LEVEL WHERE APPLICABLE.

REVISION LOG	
DATE	REVISION

FIRE ALARM INDEX	
PAGE NUMBER	PAGE DESCRIPTION
FA-0	COVERSHEET
FA-1	PARTS LISTS, WIRE LEGEND, AND MATRIX
FA-2	BUILDING 100 LEVEL 1 AND 2
FA-2.1	BUILDING 100 LEVEL 3
FA-2.2	BUILDING 100 RISER
FA-3	BUILDING 200 LEVEL 1 AND 2
FA-3.1	BUILDING 200 LEVEL 3
FA-3.2	BUILDING 200 RISER LAYOUT
FA-4	BUILDING 300 LEVEL 1 AND 2
FA-4.1	BUILDING 300 LEVEL 3
FA-4.2	BUILDING 300 RISER LAYOUT
FA-5	GENERAL DETAILS
FA-6	5208 PANEL DETAILS
FA-7	SK-PS-10 DETAILS

JUNIPER VILLAGE APARTMENTS
PARKER LANE
LILLINGTON, NC 27546

DIAMOND ELECTRONICS INC.
211 TOWN CENTER DRIVE
LOCUST, NC 28097
PHONE: 704-888-0223
FAX: 704-888491

PLAN NAME:
COVER SHEET
DRAWN BY: DRR CHECKED BY: DRR

DOCUMENT DATE: 19-Apr-23
ISSUED FOR: DATE:

REVISION	DATE	BY
▲		
▲		
▲		
▲		

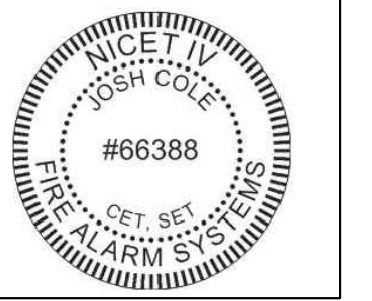
SHEET
FA-0

PLEASE VERIFY LOCATION OF BACKFLOW PREVENTER IN THE FIELD FOR INSTALLATION.
ALSO PLEASE VERIFY LOCATION OF ALL ADA UNITS PRIOR TO CONSTRUCTION TO WHAT IS SHOWN.

PLANS MUST BE PRINTED 24X36 TO HAVE CORRECT SCALE.



Josh Cole
Operations Manager, SET,
CAT
NICE-T-IV Fire Alarms #66388
NICE-T-IV Inspection and Testing of
Fire Alarm Systems
FCC GROU. FRN#0029798212
NTS CAT Level 1
NC Fire/IV #16269-SP-FALV
NC Burglar #2419-CSA
SC F/A #FAC. 13687
SC Burglar #BAC. 13882



JUNIPER VILLAGE APARTMENTS
 PARKER LANE
 LILLINGTON, NC 27546

DIAMOND
 ELECTRONICS
 INC.
 211 TOWN CENTER
 DRIVE
 LOCUST, NC
 28097
 PHONE:
 704-888-0223
 FAX:
 704-888491

PLAN NAME:
 PARTS LEGEND AND
 WIRE LEGEND AND
 MATRIX

DRAWN BY: DRR CHECKED BY: DRR

DOCUMENT DATE: 19-Apr-23

ISSUED FOR	DATE

REVISION	DATE	BY
▲		
▲		
▲		
▲		

SHEET
 FA-1

PLANS MUST BE PRINTED 24X36 TO HAVE CORRECT SCALE.

FIRE ALARM MATRIX OF OPERATION

FIRE ALARM SYSTEM INPUTS	FIRE ALARM SYSTEM OUTPUTS													
	A	B	C	D	E	F	G	H	I	J	K	L	M	N
1 MANUAL FIRE ALARM PULL STATION	X	X	X											
2 SMOKE DETECTOR-AT FACU / RPS	X	X	X											
3 SMOKE DETECTOR-AT LEVEL ONE ELEVATOR LANDING														
4 SMOKE DETECTOR-AT OTHER THAN LEVEL 1 ELEVATOR LANDING														
5 SMOKE DETECTOR-IN ELEVATOR CONTROL ROOM														
6 SMOKE DETECTOR-IN ELEVATOR TOP OF SHAFT														
7 HEAT DETECTOR-IN ELEVATOR CONTROL ROOM														
8 HEAT DETECTOR-IN ELEVATOR TOP OF SHAFT														
9 SHUNT TRIP AC POWER LOSS														
10 SPRINKLER WATER FLOW	X	X	X											
11 SPRINKLER TAMPER/OS&Y SWITCH				X	X	X								
12 CELLULAR COMMUNICATOR ANTENNA MALFUNCTION							X	X	X					
13 CELLULAR COMMUNICATOR SIGNAL BOOSTER FAILURE							X	X	X					
14 CELLULAR COMMUNICATOR LOW BATTERY/FAILURE							X	X	X					
15 CELLULAR COMMUNICATOR LOSS OF AC POWER							X	X	X					
16 CELLULAR COMMUNICATOR LOSS OF BATT. CHARGER							X	X	X					
17 FIRE ALARM AC POWER FAILURE							X	X	X					
18 FIRE ALARM SYSTEM LOW BATTERY							X	X	X					
19 FIRE ALARM OPEN CIRCUIT							X	X	X					
20 FIRE ALARM GROUND FAULT							X	X	X					
21 NAC CIRCUIT SHORT							X	X	X					

X=ACTION
BLANK=NO ACTION

DEVICE LEGEND

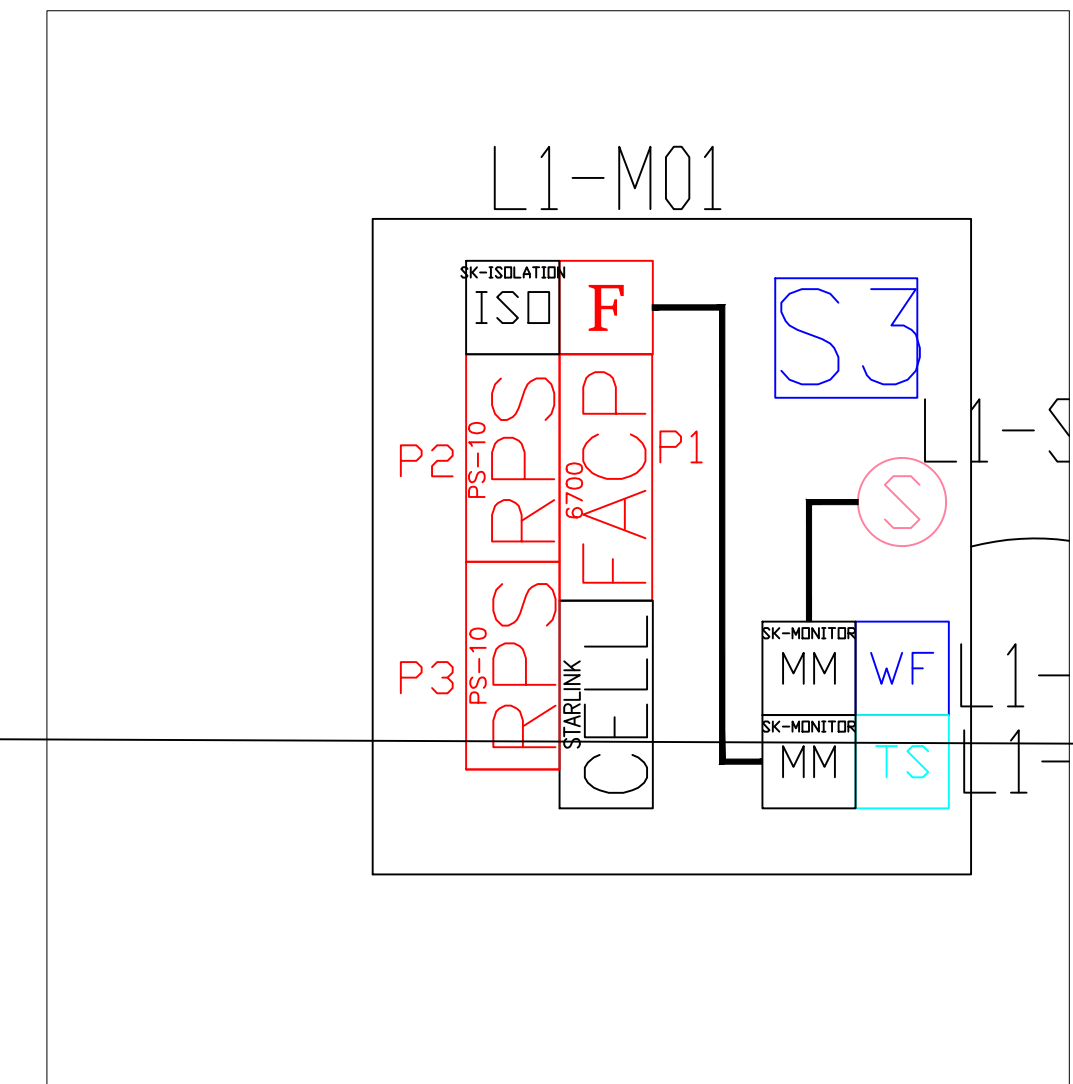
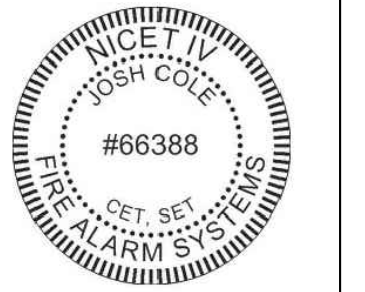
SYMBOL	QTY.	MANUFACTURER	MODEL NO.	DESCRIPTION
[FACP]	3	SILENT KNIGHT	SK-6700	FIRE ALARM CONTROL PANEL
	6		12 VDC, 7 AH	BATTERY
[FACP]	3	STARLINK	SLE-LTEVI-CFBPS	COMMUNICATOR
[RPS]	7	SILENT KNIGHT	SK-PS-10	POWER SUPPLY
	14		12 VDC, 7 AH	BATTERY
☉	3	SILENT KNIGHT	SK-PHOTO	SMOKE DETECTOR
[F]	3	SILENT KNIGHT	SK-PULL-SA	PULL STATION
📢	24	SYSTEM SENSOR	P2WH-LLF	HORN STROBE - WALL, WHITE, LOW FREQUENCY
📢WP	32	SYSTEM SENSOR	P2WK	HORN STROBE - WALL, WHITE, WEATHERPROOF
📢	233	SYSTEM SENSOR	HWL-LF	HORN - WALL, WHITE, LOW FREQUENCY
📢	14	SYSTEM SENSOR	SWL	STROBE - WALL, WHITE
📺	6	SILENT KNIGHT	SK-MONITOR	MONITOR MODULE
WF		BY OTHERS		WATERFLOW SWITCH
TS		BY OTHERS		TAMPER SWITCH
[S2]	-	DITEK	DTK-2MHLP36BW	SURGE SUPPRESSOR 36 VDC
[S3]	3	DITEK	DTK-120HW	SURGE SUPPRESSOR 120 VAC

CABLE AND WIRE LEGEND

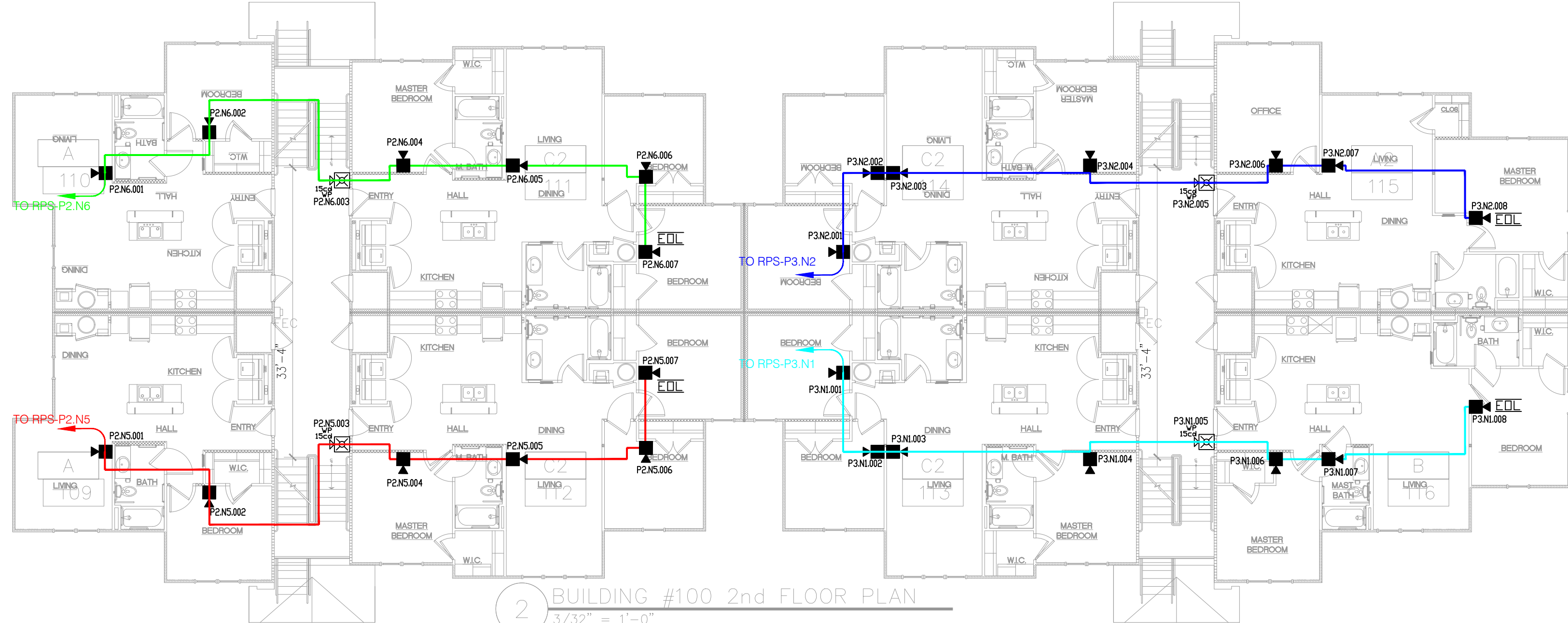
LABEL	PART NO	AWG	RESISTANCE (Ω/KFT)	DESCRIPTION
1V	18/4 FPLP/R (SLC)	18	7.77	4 COND. SOLID COPPER FPLP/R ADDRESSABLE UNSHIELDED
1A	14/2 FPLP/R (NAC)	14	3.07	2 COND. SOLID COPPER FPLP/R ANALOG UNSHIELDED
1TR	14/2 FPLP/R (NAC TRIGGER)	14	3.07	2 COND. SOLID COPPER FPLP/R ANALOG UNSHIELDED
1485	18/4 FPLP/R (RS-485)	18	7.77	4 COND. SOLID COPPER FPLP/R ANALOG UNSHIELDED



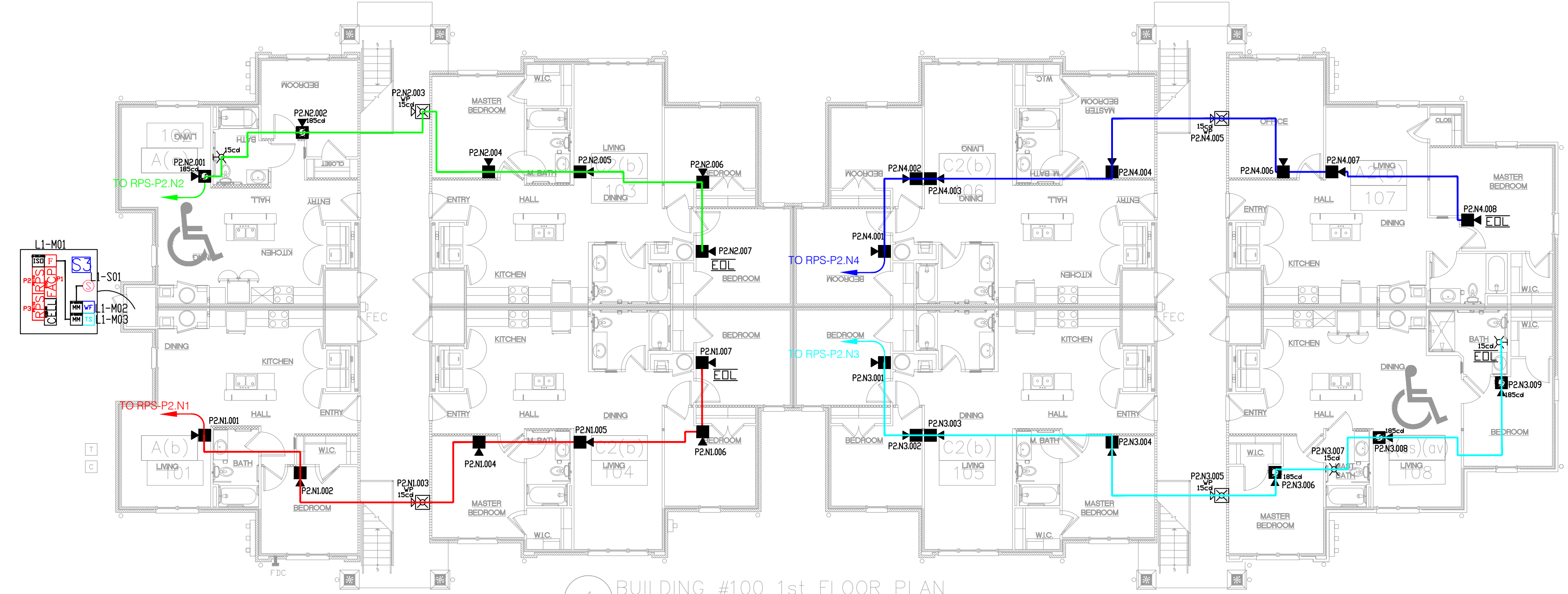
Josh Cole
Operations Manager, SET,
CAT
NICE-TV Fire Alarms #66388
Nietl II Inspection and Testing of
Fire Alarm Systems
FCC GROU. FRN#0029798212
NTS CAT Level 1
NC Fire/LV #16269-SP-FALV
NC Burglar #2419-CSA
SC F/A #FAC. 13687
SC Burglar #BAG. 13882



2 FIRE ALARM PLAN - FACP CLOSET
NTS



1 FIRE ALARM PLAN - BUILDING 100 LEVEL 2
3/32" = 1'-0"



1 FIRE ALARM PLAN - BUILDING 100 LEVEL 1
3/32" = 1'-0"

JUNIPER VILLAGE APARTMENTS
PARKER LANE
LILLINGTON, NC 27546

DIAMOND ELECTRONICS INC.
211 TOWN CENTER DRIVE
LOCUST, NC 28097
PHONE: 704-888-0223
FAX: 704-888491

PLAN NAME:
BUILDING 100 LEVEL 1 & 2

DRAWN BY: DRR CHECKED BY: DRR

DOCUMENT DATE: 19-Apr-23

ISSUED FOR: DATE:

REVISION	DATE	BY

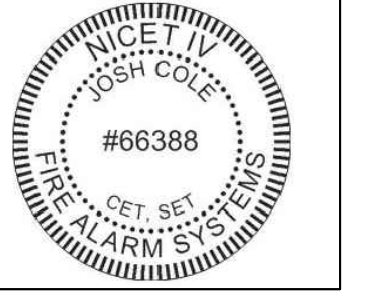
SHEET

FA-2

PLANS MUST BE PRINTED 24X36 TO HAVE CORRECT SCALE.



Josh Cole
 Operations Manager, SET,
 CAT
 NICE-T-IV Fire Alarms #66388
 NICE-T-IV Inspection and Testing of
 Fire Alarm Systems
 FCC GROU. FRN#0029798212
 NTS CAT Level 1
 NC Fire/LV #16269-SP-FALV
 NC Burglar #2419-CSA
 SC F/A #FAC. 13687
 SC Burglar #BAG. 13882



**JUNIPER VILLAGE APARTMENTS
 PARKER LANE
 LILLINGTON, NC 27546**

DIAMOND
 ELECTRONICS
 INC.
 211 TOWN CENTER
 DRIVE
 LOCUST, NC
 28097
 PHONE:
 704-888-0223
 FAX:
 704-888491

PLAN NAME:
 BUILDING
 100 LEVEL
 3

DRAWN BY: DRR CHECKED BY: DRR

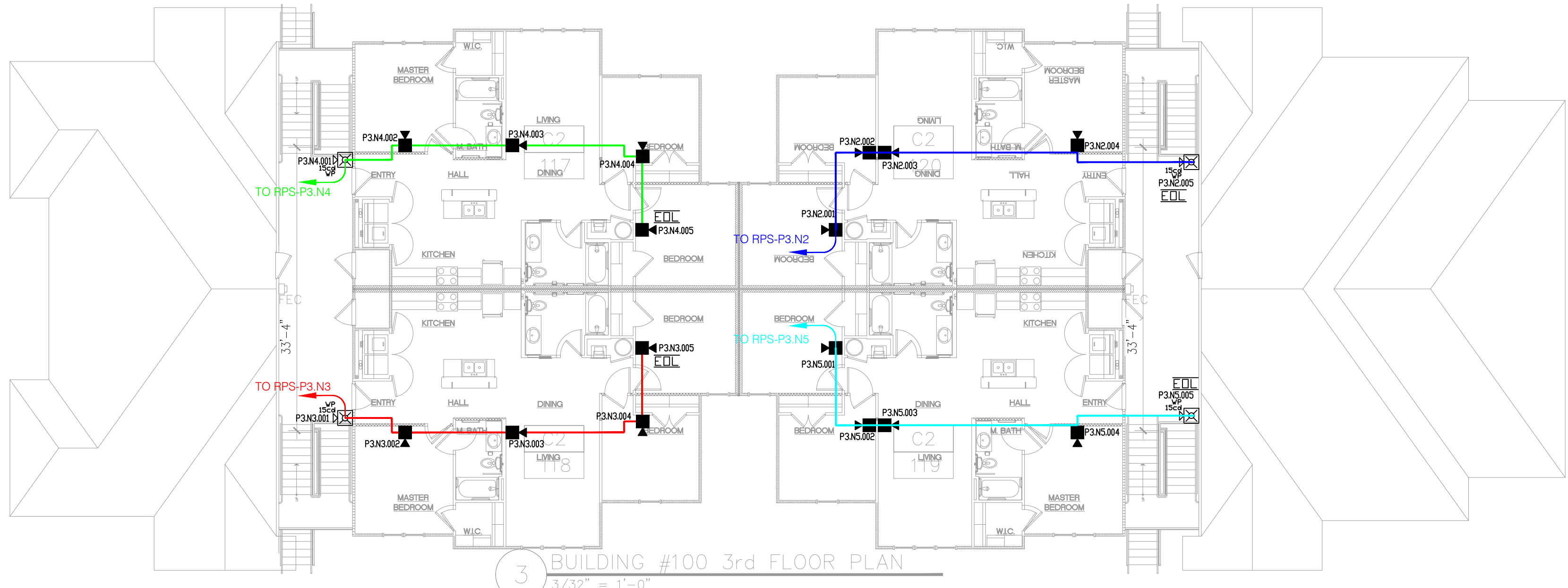
DOCUMENT DATE: 19-Apr-23

ISSUED FOR	DATE

REVISION	DATE	BY

SHEET
 FA-2.1

PLANS MUST BE PRINTED 24X36 TO HAVE CORRECT SCALE.

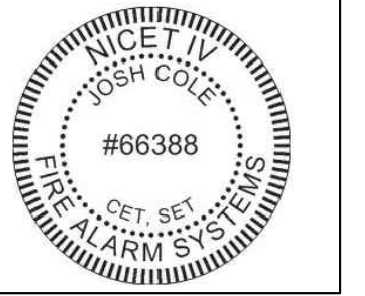


3 BUILDING #100 3rd FLOOR PLAN
 3/32" = 1'-0"

1 FIRE ALARM PLAN - BUILDING 100 LEVEL 3
 3/32" = 1'-0"



Josh Cole
Operations Manager, SET,
CAT
NICE-T-IV Fire Alarms #66388
NICE-T II Inspection and Testing of
Fire Alarm Systems
FCC GROU. FRN#0029798212
NTS CAT Level 1
NC Fire/LV #16269-SP-FALV
NC Burglar #2419-CSA
SC F/A #FAC 13687
SC Burglar #BAG 13882



BRIGHTLEAF TERRACE APARTMENT
PARKER LANE
LILLINGTON, NC 27546

DIAMOND
ELECTRONICS
INC.
211 TOWN CENTER
DRIVE
LDCUST, NC
28097
PHONE:
704-888-0223
FAX:
704-888491

PLAN NAME:
BUILDING
100 RISER
LAYOUT

DRAWN BY: DRR CHECKED BY: DRR

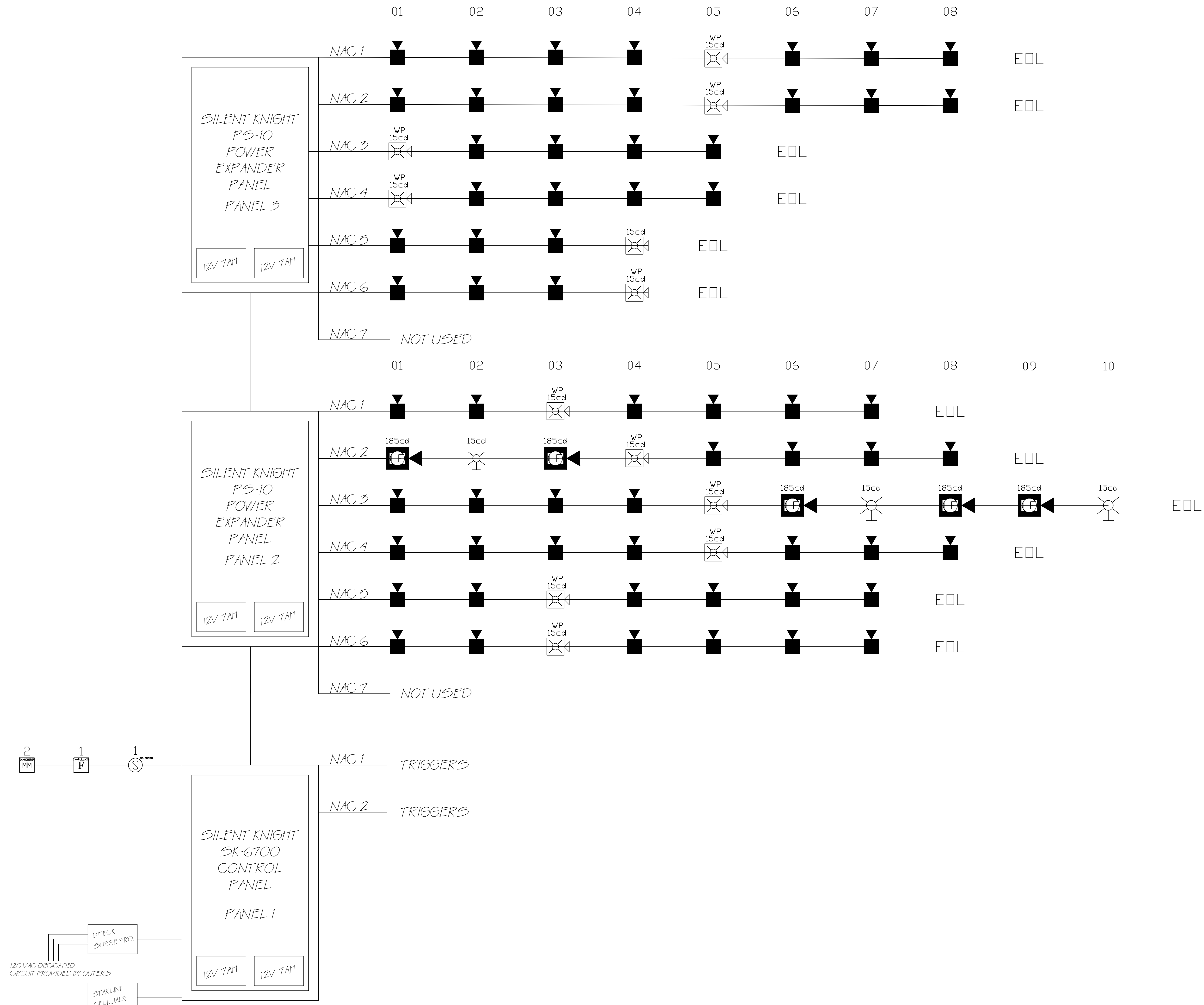
DOCUMENT DATE: 19-Apr-23

ISSUED FOR	DATE

REVISION	DATE	BY
▲		
▲		
▲		
▲		

SHEET
FA-2.2

PLANS MUST BE PRINTED 24X36 TO HAVE CORRECT SCALE.

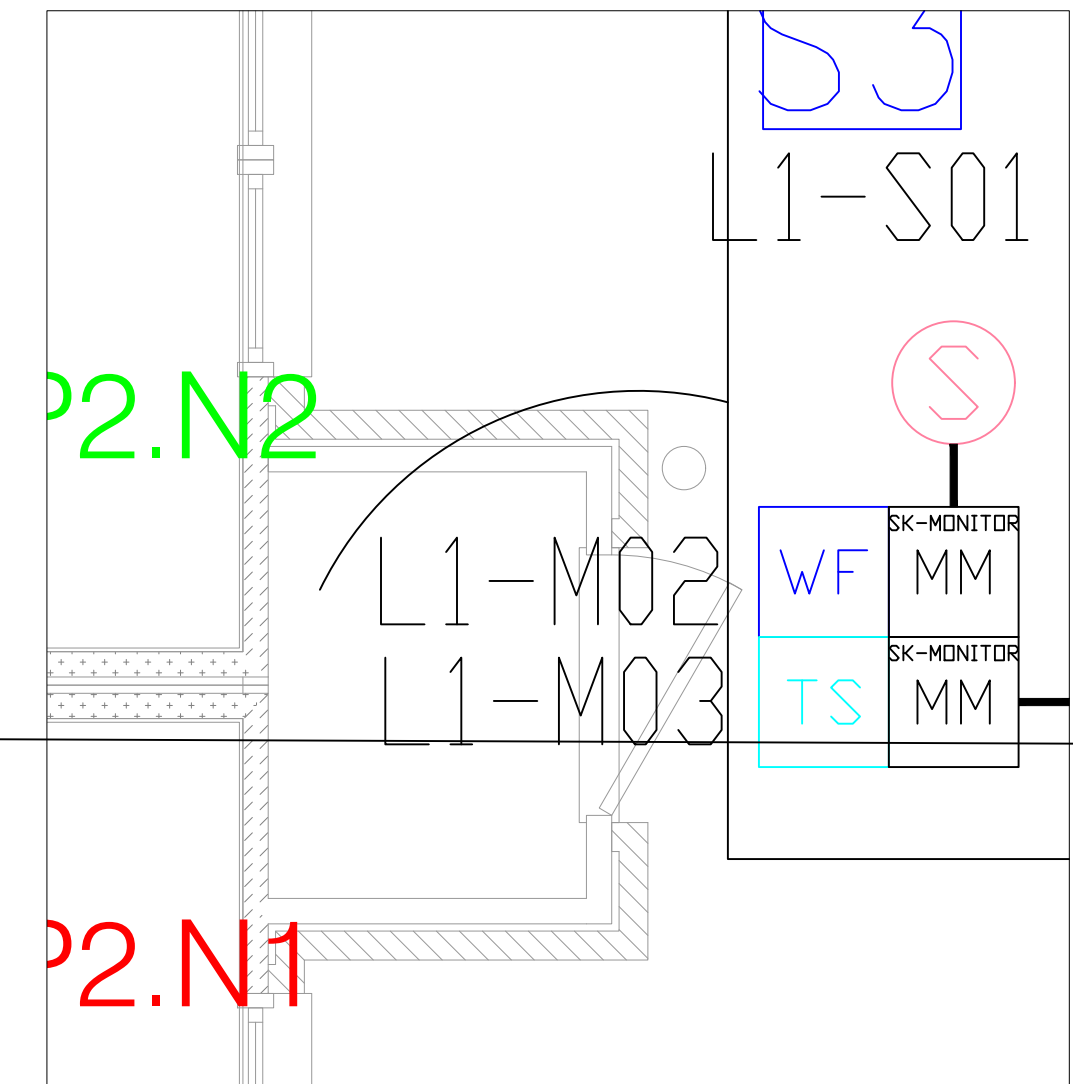
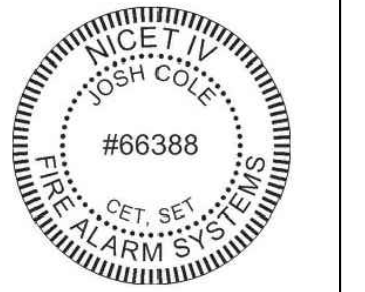


BUILDING 100

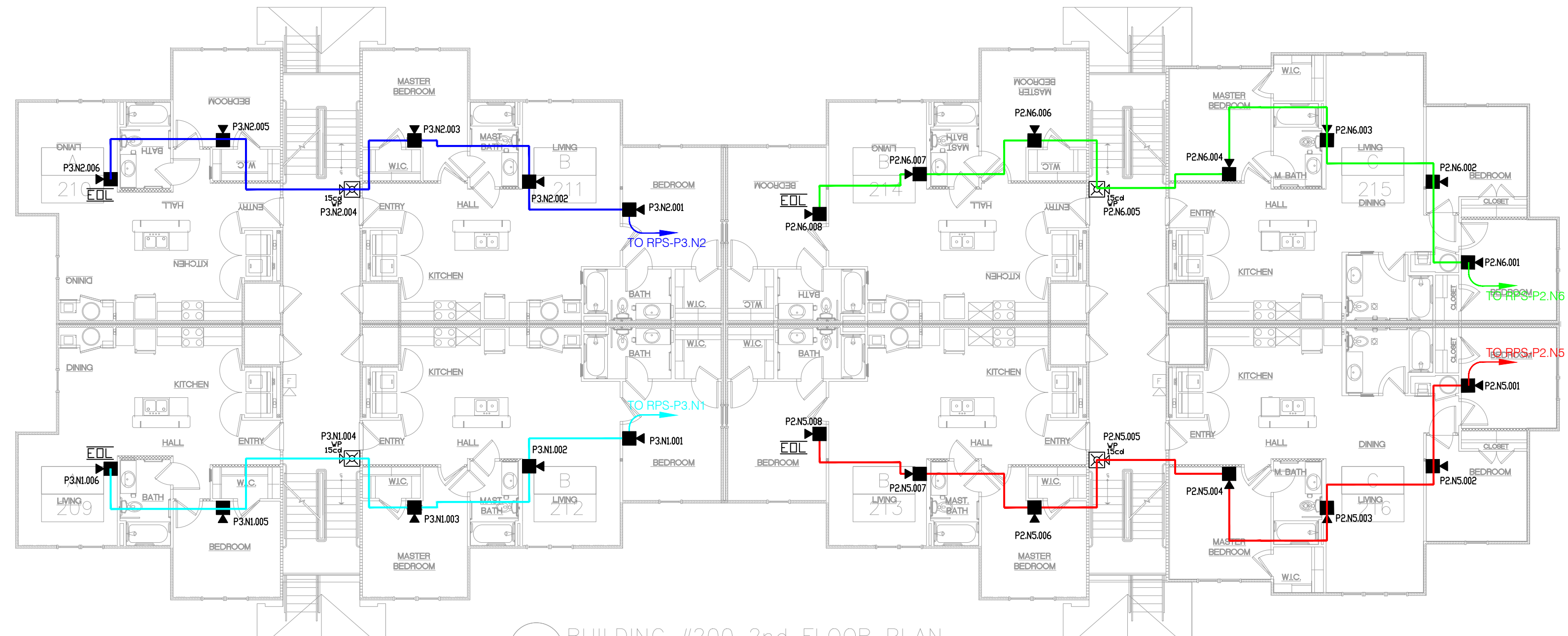
1 FIRE ALARM PLAN - BUILDING 100 RISER LAYOUT



Josh Cole
Operations Manager, SET,
CAT
Nice-t-IV Fire Alarms #66388
Nice-t-IV Inspection and Testing of
Fire Alarm Systems
FCC GROU. FRN#0029798212
NTS CAT Level 1
NC Fire/LV #16269-SP-FALV
NC Burglar #2419-CSA
SC F/A #FAC.13687
SC Burglar #BAG.13852

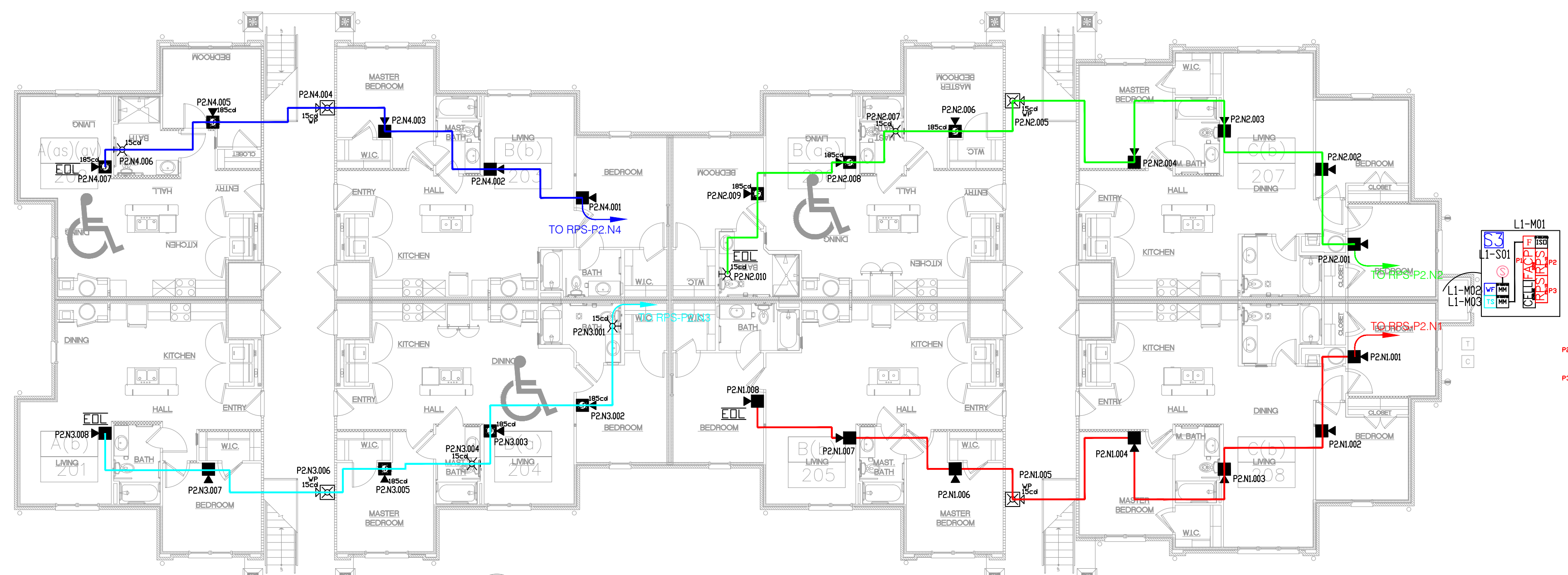


2 FIRE ALARM PLAN - FACP CLOSET
NTS



2 BUILDING #200 2nd FLOOR PLAN
3/32" = 1'-0"

1 FIRE ALARM PLAN - BUILDING 200 LEVEL 2
3/32" = 1'-0"



1 BUILDING #200 1st FLOOR PLAN
3/32" = 1'-0"

1 FIRE ALARM PLAN - BUILDING 200 LEVEL 1
3/32" = 1'-0"

JUNIPER VILLAGE APARTMENTS
PARKER LANE
LILLINGTON, NC 27546

DIAMOND ELECTRONICS INC.
211 TOWN CENTER DRIVE
LOCUST, NC 28097
PHONE: 704-888-0223
FAX: 704-888491

PLAN NAME:
BUILDING 200 LEVEL 1 & 2

DRAWN BY: DRR CHECKED BY: DRR

DOCUMENT DATE: 19-Apr-23

ISSUED FOR: DATE:

REVISION	DATE	BY
▲		
▲		
▲		

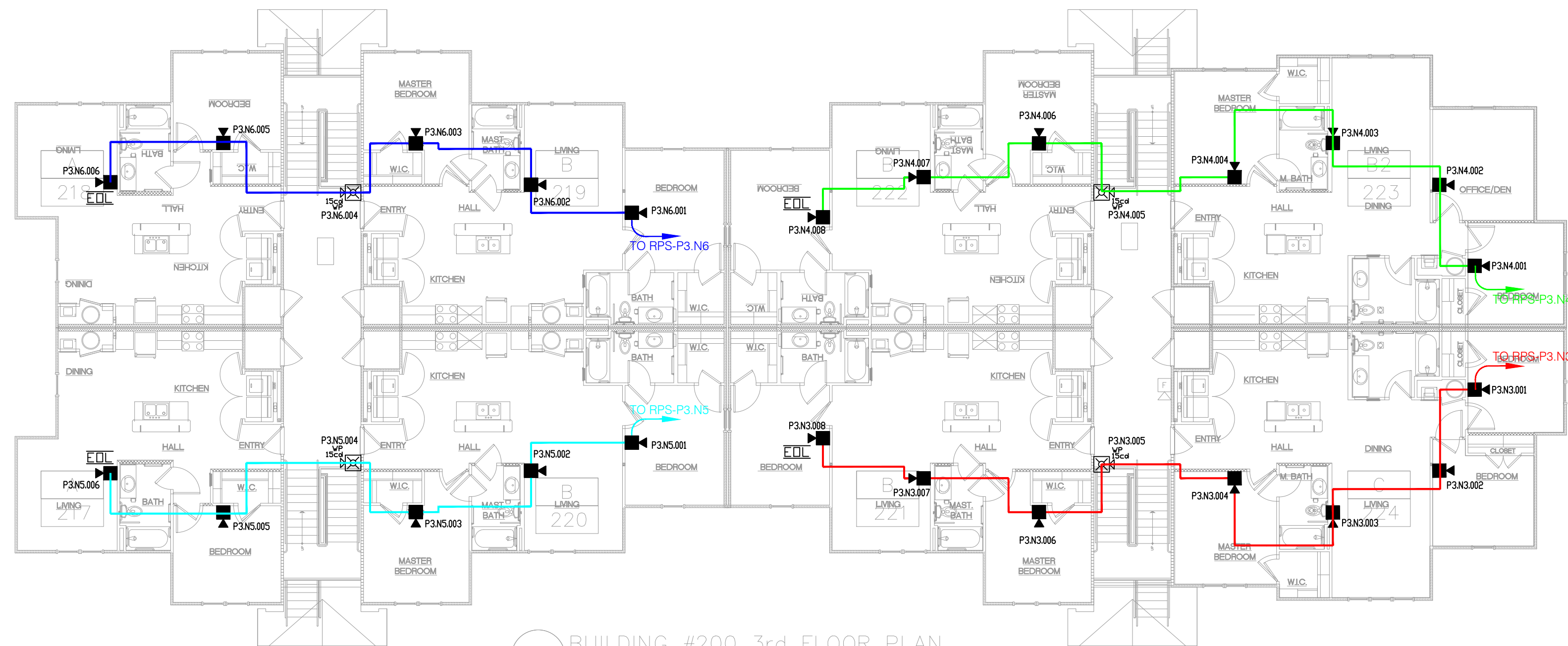
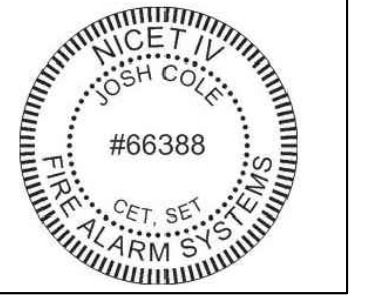
SHEET

FA-3

PLANS MUST BE PRINTED 24X36 TO HAVE CORRECT SCALE.



Josh Cole
 Operations Manager, SET,
 CAT
 NICE-T-ITV Fire Alarms #66388
 NICE-T-ITV Inspection and Testing of
 Fire Alarm Systems
 FCC GROU. FRN#0029798212
 NTS CAT Level 1
 NC Fire/LV #16269-SP-FALV
 NC Burglar #2419-CSA
 SC F/A #FAC.13687
 SC Burglar #BAG.13882



3 BUILDING #200 3rd FLOOR PLAN
 3/32" = 1'-0"

1 FIRE ALARM PLAN - BUILDING 200 LEVEL 3
 3/32" = 1'-0"

JUNIPER VILLAGE APARTMENTS
 PARKER LANE
 LILLINGTON, NC 27546

DIAMOND
 ELECTRONICS
 INC.
 211 TOWN CENTER
 DRIVE
 LOCUST, NC
 28097
 PHONE:
 704-888-0223
 FAX:
 704-888491

PLAN NAME:
 BUILDING
 200 LEVEL
 3

DRAWN BY: DRR CHECKED BY: DRR

DOCUMENT DATE: 19-Apr-23

ISSUED FOR	DATE

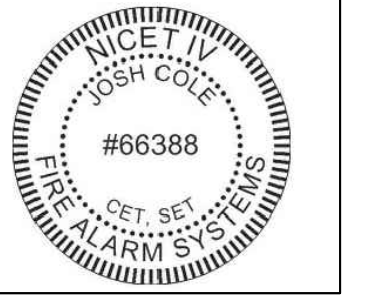
REVISION	DATE	BY

SHEET
 FA-3.1

PLANS MUST BE PRINTED 24X36 TO HAVE CORRECT SCALE.



Josh Cole
Operations Manager, SET,
CAT
NICE-T IV Fire Alarms #66388
NICE-T II Inspection and Testing of
Fire Alarm Systems
FCC GROL FRN#0029798212
NTS CAT Level 1
NC Fire LV #16269-SP-FALV
NC Burglar #2419-CSA
SC F/A #FAC 13687
SC Burglar #BAG 13882



JUNIPER VILLAGE APARTMENTS
PARKER LANE
LILLINGTON, NC 27546

DIAMOND
ELECTRONICS
INC.
211 TOWN CENTER
DRIVE
LOCUST, NC
28097
PHONE:
704-888-0223
FAX:
704-888491

PLAN NAME:
BUILDING
200 RISER
LAYOUT

DRAWN BY: DRR CHECKED BY: DRR

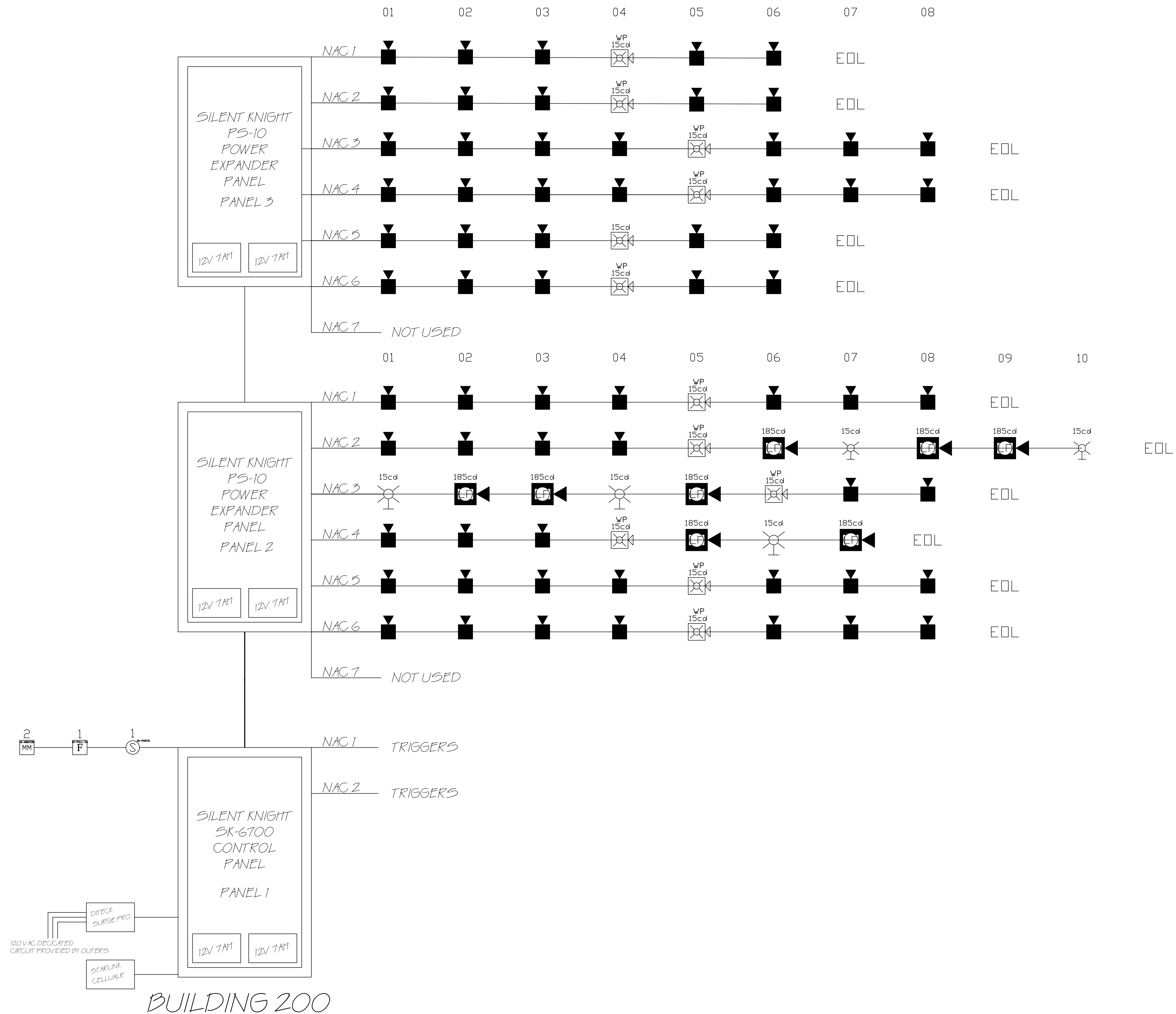
DOCUMENT DATE: 19-Apr-23

ISSUED FOR	DATE

REVISION	DATE	BY

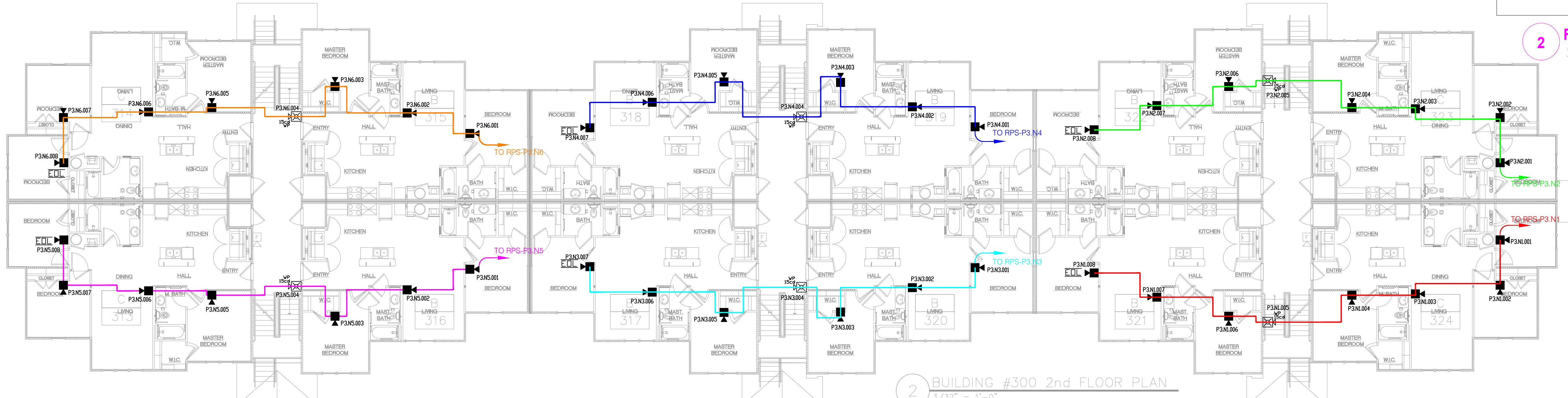
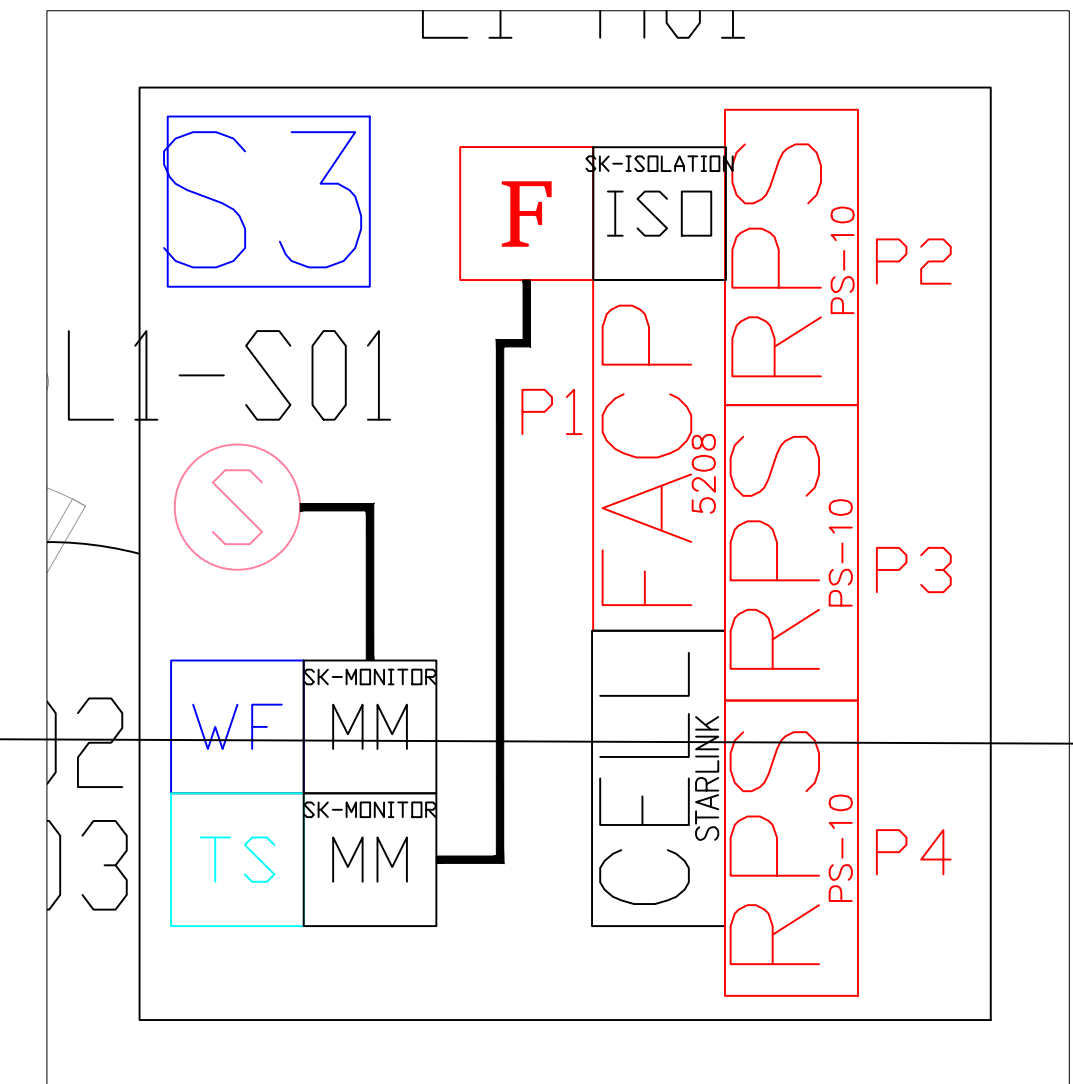
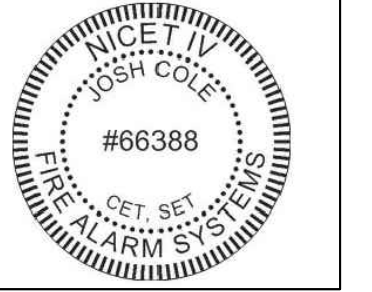
SHEET
FA-3.2

PLANS MUST BE PRINTED 24X36 TO HAVE CORRECT SCALE.





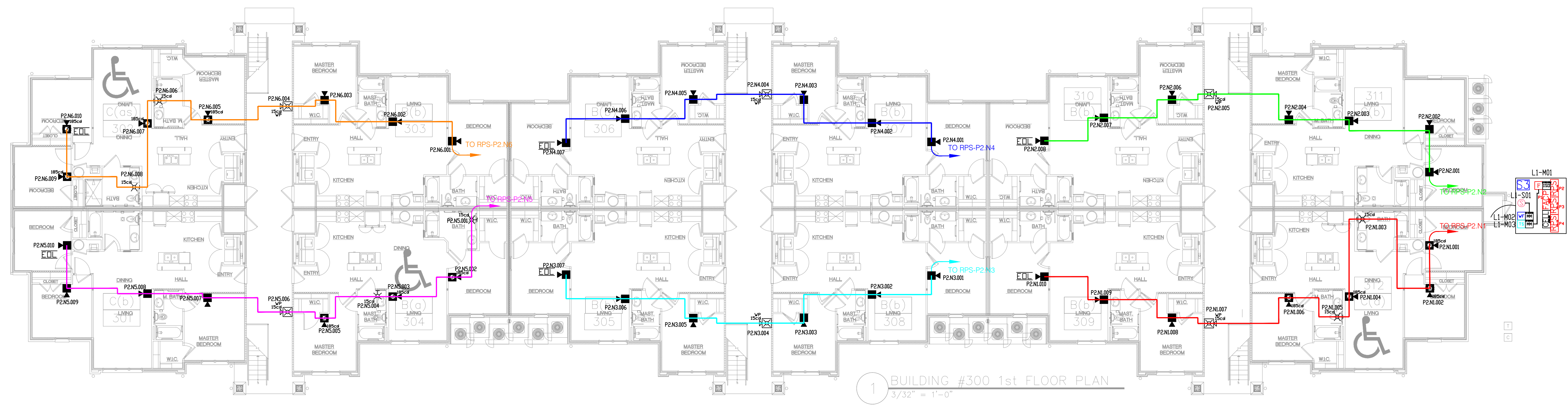
Josh Cole
Operations Manager, SET,
CAT
Nice-t-IV Fire Alarms #66388
Nietel II Inspection and Testing of
Fire Alarm Systems
FCC GROU. FRN#0029798212
NTS CAT Level 1
NC Fire/LV #16269-SP-FALV
NC Burglar #2419-CSA
SC F/A #FAC. 13687
SC Burglar #BAG. 13852



1 FIRE ALARM PLAN - BUILDING 300 LEVEL 2
3/32" = 1'-0"

2 BUILDING #300 2nd FLOOR PLAN
3/32" = 1'-0"

2 FIRE ALARM PLAN - FACP CLOSET
NTS



1 FIRE ALARM PLAN - BUILDING 300 LEVEL 1
3/32" = 1'-0"

1 BUILDING #300 1st FLOOR PLAN
3/32" = 1'-0"

JUNIPER VILLAGE APARTMENTS
PARKER LANE
LILLINGTON, NC 27546

DIAMOND ELECTRONICS INC.
211 TOWN CENTER DRIVE
LIDCUST, NC 28097
PHONE: 704-888-0223
FAX: 704-888491

PLAN NAME:
BUILDING 300 LEVEL 1 & 2

DRAWN BY: DRR CHECKED BY: DRR

DOCUMENT DATE: 19-Apr-23

ISSUED FOR: DATE: APPROVED BY:

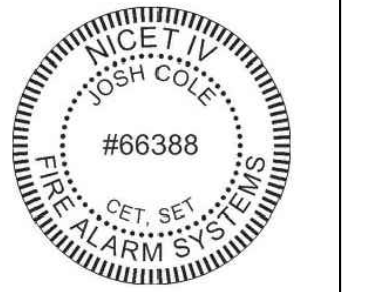
REVISION	DATE	BY

SHEET
FA-4

PLANS MUST BE PRINTED 24X36 TO HAVE CORRECT SCALE.



Josh Cole
Operations Manager, SET,
CAT
NICE-T-IV Fire Alarms #66388
Nietel II Inspection and Testing of
Fire Alarm Systems
FCC GROU. FRN#0029798212
NTS CAT Level 1
NC Fire/LV #16269-SP-FALV
NC Burglar #2419-CSA
SC F/A #FAC. 13687
SC Burglar #BAG. 13882



**JUNIPER VILLAGE APARTMENTS
PARKER LANE
LILLINGTON, NC 27546**

DIAMOND
ELECTRONICS
INC.
211 TOWN CENTER
DRIVE
LOCUST, NC
28097
PHONE:
704-888-0223
FAX:
704-888491

PLAN NAME:
BUILDING
200 LEVEL
3

DRAWN BY: DRR CHECKED BY: DRR

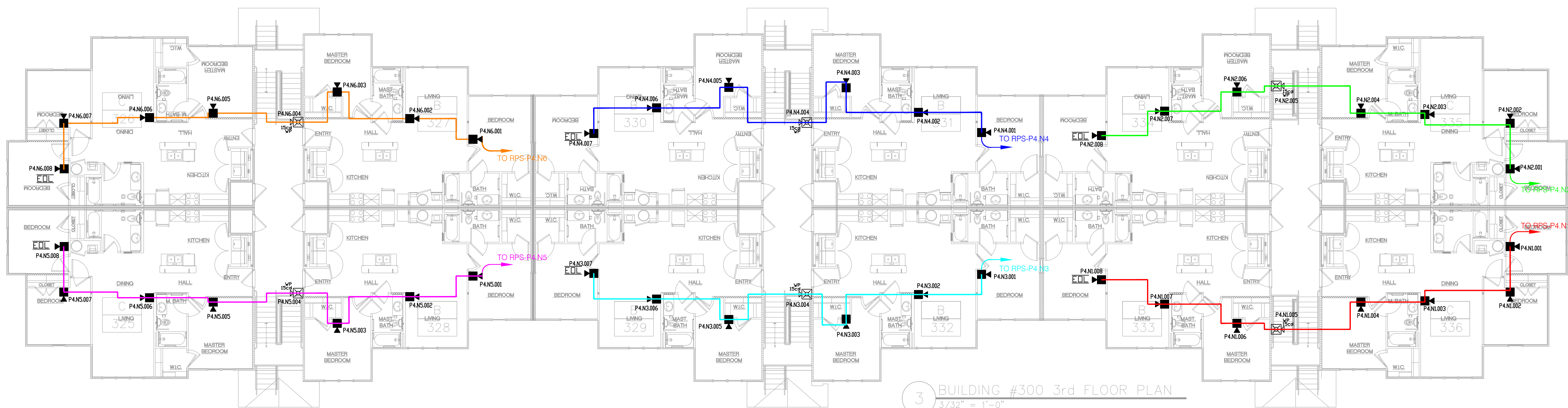
DOCUMENT DATE: 19-Apr-23

ISSUED FOR	DATE

REVISION	DATE	BY
▲		
▲		
▲		
▲		

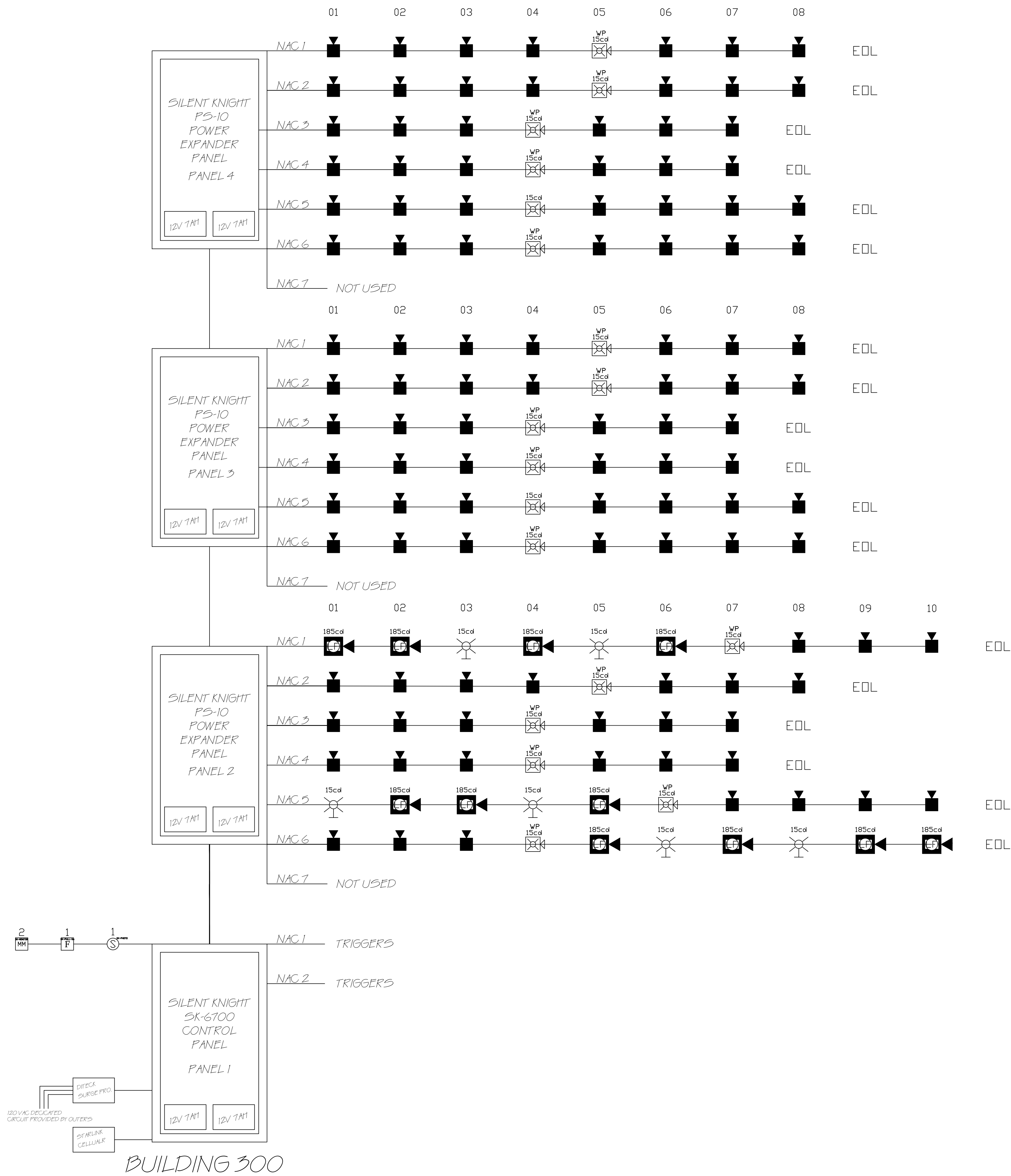
SHEET
FA-4.1

PLANS MUST BE PRINTED 24X36 TO HAVE CORRECT SCALE.



3 BUILDING #300 3rd FLOOR PLAN
3/32" = 1'-0"

1 FIRE ALARM PLAN - BUILDING 300 LEVEL 3
3/32" = 1'-0"



BUILDING 300

1 FIRE ALARM PLAN - BUILDING 300 RISER LAYOUT



Josh Cole
Operations Manager, SET,
CAT
NICE-T IV Fire Alarms #66388
Nict II Inspection and Testing of
Fire Alarm Systems
FCC GROU. FRN#0029798212
NTS CAT Level 1
NC Fire LV #16269-SP-FALV
NC Burglar #2419-CSA
SC F/A #FAC. 13687
SC Burglar #BAG. 13882



JUNIPER VILLAGE APARTMENTS
PARKER LANE
LILLINGTON, NC 27546

DIAMOND ELECTRONICS INC.
211 TOWN CENTER DRIVE
LOCUST, NC 28097
PHONE: 704-888-0223
FAX: 704-888491

PLAN NAME:
BUILDING 300 RISER LAYOUT
DRAWN BY: DRR CHECKED BY: DRR

DOCUMENT DATE: 19-Apr-23
ISSUED FOR: DATE:

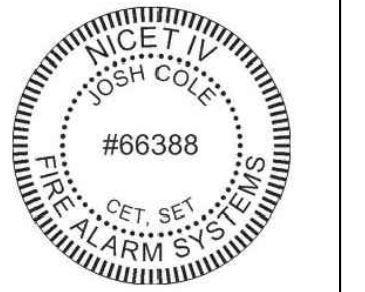
REVISION	DATE	BY
▲		
▲		
▲		
▲		

SHEET
FA-4.2

PLANS MUST BE PRINTED 24X36 TO HAVE CORRECT SCALE.



Josh Cole
Operations Manager, SET,
CAT
NICE-T-IV Fire Alarms #66388
Nictel II Inspection and Testing of
Fire Alarm Systems
FCC GROU. FRN#0029798212
NTS CAT Level 1
NC Fire/LV #16269-SP-FALV
NC Burglar #2419-CSA
SC F/A #FAC 13687
SC Burglar #BAC 13882



JUNIPER VILLAGE APARTMENTS
 PARKER LANE
 LILLINGTON, NC 27546

DIAMOND
 ELECTRONICS
 INC.
 211 TOWN CENTER
 DRIVE
 LIDCUST, NC
 28097
 PHONE:
 704-888-0223
 FAX:
 704-888491

PLAN NAME:
 GENERAL
 DETAILS

DRAWN BY: DRR
 CHECKED BY: DRR

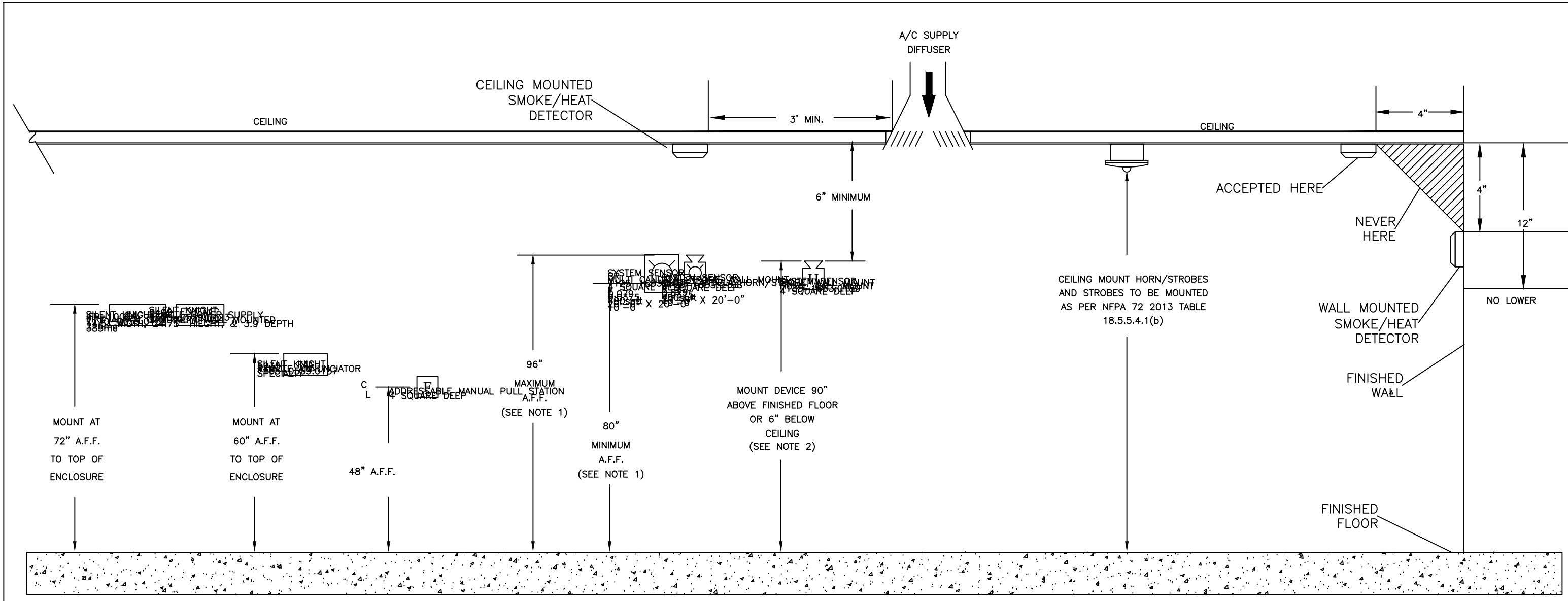
DOCUMENT DATE: 19-Apr-23

ISSUED FOR	DATE

REVISION	DATE	BY

SHEET
 FA-5

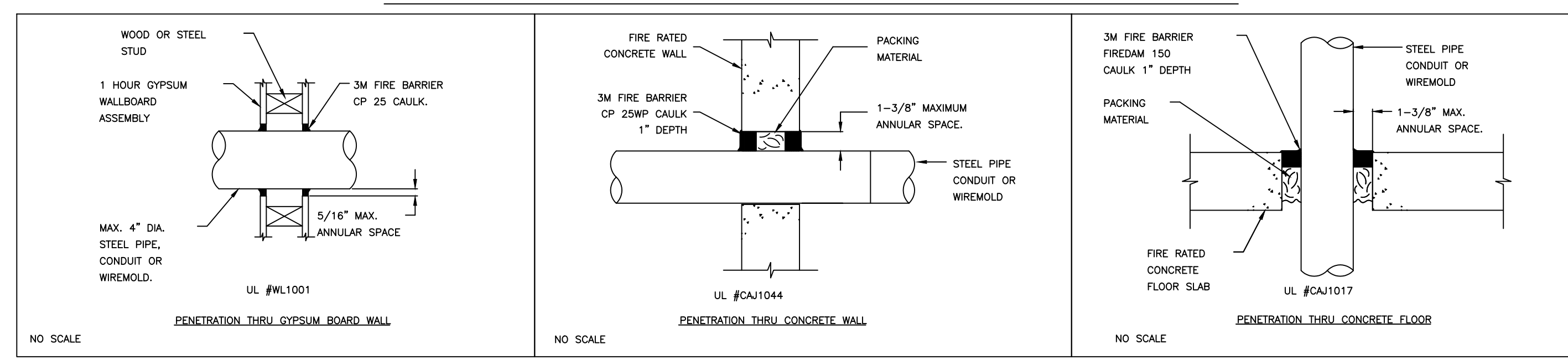
PLANS MUST BE PRINTED 24X36 TO HAVE CORRECT SCALE.



- NOTES:
1. WALL MOUNTED APPLIANCES SHALL BE MOUNTED SUCH THAT THE ENTIRE LENS IS NOT LESS THAN 80° AND NOT GREATER THAN 96° ABOVE FINISHED FLOOR. (NFPA 72 2013 SECTION 18.5.5.1*)
 2. IF CEILING HEIGHTS ALLOW, AND UNLESS OTHERWISE PERMITTED, WALL MOUNT APPLIANCES SHALL HAVE THEIR TOPS ABOVE FINISHED FLOOR AT HEIGHTS NOT LESS THAN 90° AND BELOW THE FINISHED CEILING AT DISTANCES OF NOT LESS THAN 6". (NFPA 72 2013 SECTION 18.4.8.1)

DEVICE MOUNTING ELEVATIONS
N.T.S.

FIRE STOP/THRU-PENETRATION DETAIL

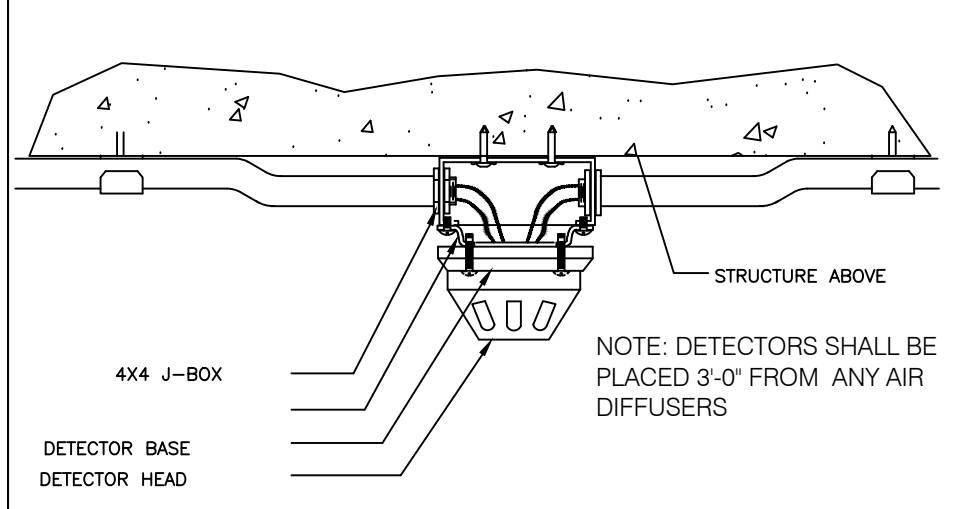


- SYSTEM NO. WL1001 (FORMERLY SYSTEM NO. 147)
 F RATINGS - 1,2,3, AND 4 HR (SEE ITEMS 2 AND 3)
 T RATINGS - 0,1,2,3, AND 4 HR (SEE ITEM 3)
 L RATING AT AMBIENT - LESS THAN 1 CFM/SQ FT (SEE ITEM 3)
 L RATING AT 400 F - LESS THAN 1 CFM/SQ FT (SEE ITEM 3)
1. WALL ASSEMBLY - THE 1,2,3 OR 4 HR FIRE-RATED GYPSUM WALL BOARD/STUD WALL ASSEMBLY SHALL BE CONSTRUCTED OF THE MATERIALS AND IN THE MANNER DESCRIBED IN THE INDIVIDUAL U300 OR U400 SERIES WALL OR PARTITION DESIGN IN THE UL FIRE RESISTANCE DIRECTORY AND SHALL INCLUDE THE FOLLOWING CONSTRUCTION FEATURES:
 - A. STUDS - WALL FRAMING MAY CONSIST OF EITHER WOOD STUDS (MAX 2 HR FIRE RATED ASSEMBLIES) OR STEEL CHANNEL STUDS. WOOD STUDS TO CONSIST OF NOM 2 BY 4 IN. LUMBER SPACED IN 18 IN. OC W/IT NOM 2 BY 4 IN. LUMBER AND PLATES AND CROSS BRACES. STEEL STUDS TO BE MIN 3-8/8 IN. WIDE BY 1-3/8 IN. DEEP CHANNELS SPACED MAX 24 IN. CC.
 - B. WALLBOARD, GYPSUM - NOM 1/2 OR 5/8 IN. THICK, 4 FT. WIDE WITH SQUARE OR TAPERED EDGES. THE GYPSUM WALLBOARD RIPS, THICKNESS, NUMBER OF LAYERS, FASTENER TYPE AND SHEET ORIENTATION SHALL BE SPECIFIED IN THE INDIVIDUAL U300 OR U400 SERIES DESIGN IN THE UL FIRE RESISTANCE DIRECTORY. MAX DIAM OF OPENING IS 13-1/2 IN.
 2. PIPE OR CONDUIT - NOM 12 IN. DIAM (OR SMALLER) SCHEDULE 10 (OR HAVIER) STEEL PIPE NOM 6 IN. DIAM (OR SMALLER) STEEL CONDUIT, NOM 4 IN. DIAM (OR SMALLER) STEEL ELECTRICAL METALIC TUBING OR TYPE L OR (OR HAVIER) COPPER TUBING NOM 1 IN. DIAM (OR SMALLER) FLEXIBLE STEEL CONDUIT. WHEN COPPER PIPE OR FLEXIBLE STEEL CONDUIT IS USED, MAX F RATING OF FIRESTOP SYSTEM (ITEM STRUCTURED USING STEEL CHANNEL STUDS. A MAX OF ONE PIPE OR CONDUIT IS PERMITTED IN THE FIRESTOP SYSTEM. PIPE OR CONDUIT TO BE INSTALLED NEAR CENTER OF STUD CAVITY WIDTH AND TO BE RIGIDLY SUPPORTED ON BOTH SIDES OF WALL ASSEMBLY.
 3. FILL, VOID OR CAVITY MATERIAL - CAULK - CAULK FILL MATERIAL INSTALLED TO COMPLETELY FILL ANULAR SPACE BETWEEN PIPE OR CONDUIT AND GYPSUM WALLBOARD AND WITH A MIN 1/4 IN. DIAM BOARD OF CHAULK APPLIED TO PERIMETER OF PIPE OR CONDUIT AT ITS EGREES FROM THE WALL. CHAULK INSTALLED SYMMETRICALLY ON BOTH SIDES OF WALL ASSEMBLY. THE HOURLY F RATING OF THE FIRESTOP SYSTEM IS DEPENDENT UPON THE HOURLY FIRE RATING OF THE WALL ASSEMBLY IN WHICH IT IS INSTALLED, AS SHOWN IN THE FOLLOWING TABLE. THE HOURLY F RATING OF THE FIRESTOP SYSTEM IS DEPENDENT UPON THE TYPE OR SIZE OF THE PIPE OR CONDUIT AND THE HOURLY FIRE RATING OF THE WALL ASSEMBLY IN WHICH IT IS INSTALLED, AS TABLETED BELOW:

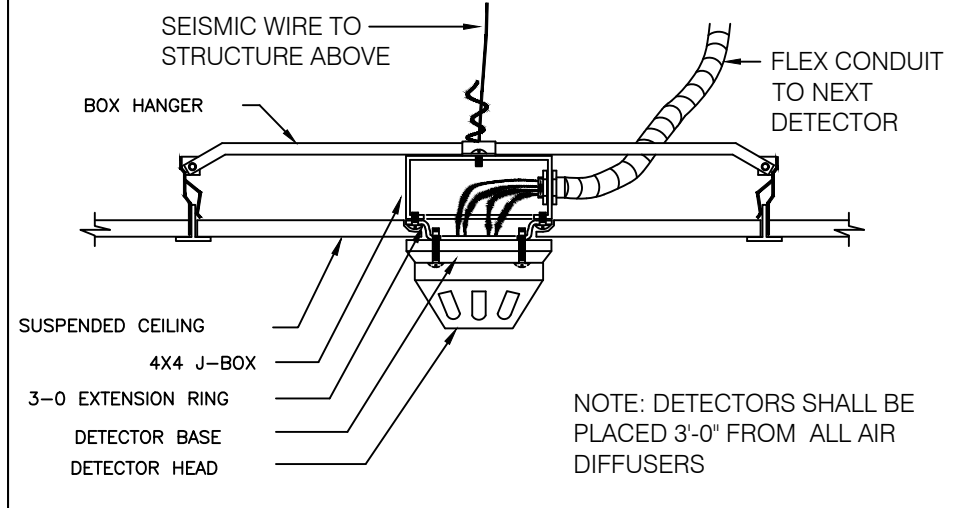
MAX PIPE OR CONDUIT DIAM, IN	ANULAR SPACE IN	F RATING HR	T RATING HR
1	0 TO 3/16	1 OR 2	0 + 1 OR 2
1	1/4 TO 1/2	3 OR 4	3 OR 4
4	0 TO 1/4	1 OR 2	0
6	1/4 TO 1/2	3 OR 4	0
12	3/16 TO 3/8	1 OR 2	0

+ WHEN COPPER PIPE IS USED, T RATING IS 0 NOM.
 MINNESOTA MINING & MFG. CO. - TYPES CP-25 S/L, CP-25 N/B, CP-25 WS, CP-25 WS + (NOTE: L RATINGS APPLY WHEN TYPE CP-25 WS+ CAULK IS USED.)

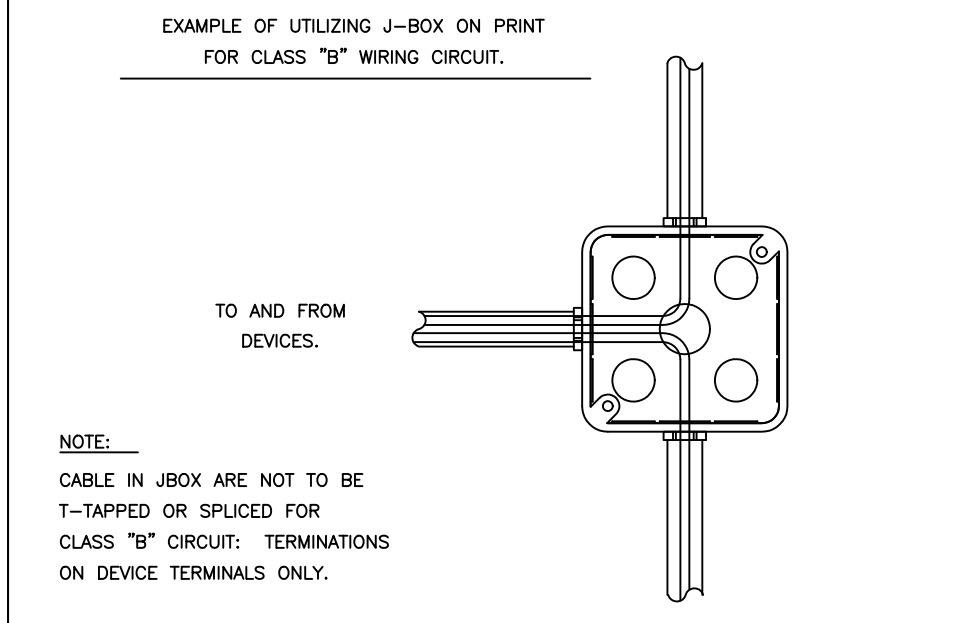
THROUGH WALL PENETRATION DETAILS
N.T.S.



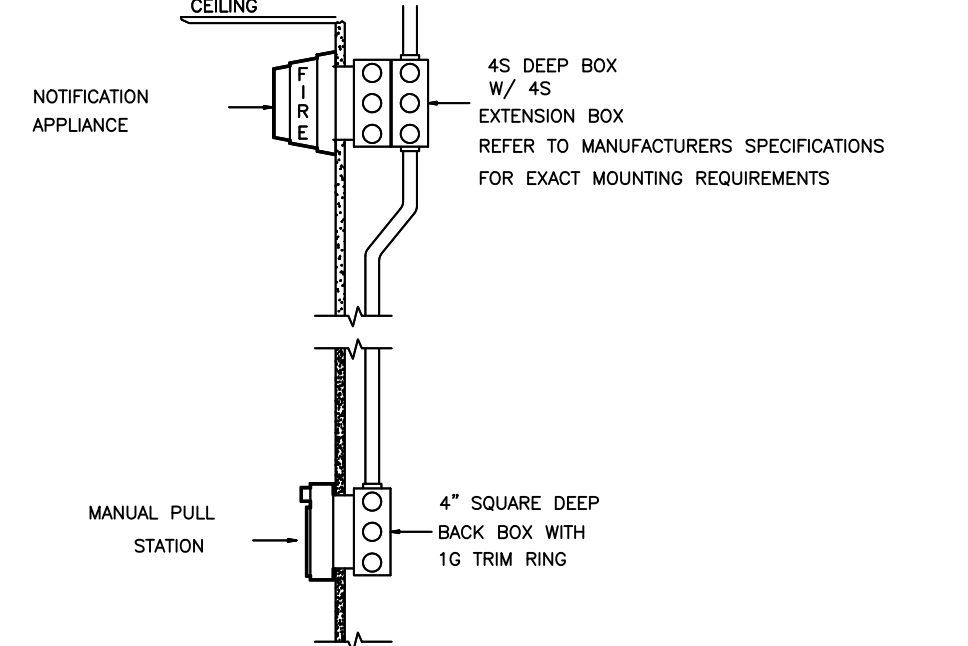
SURFACE MOUNT DEVICE
N.T.S.



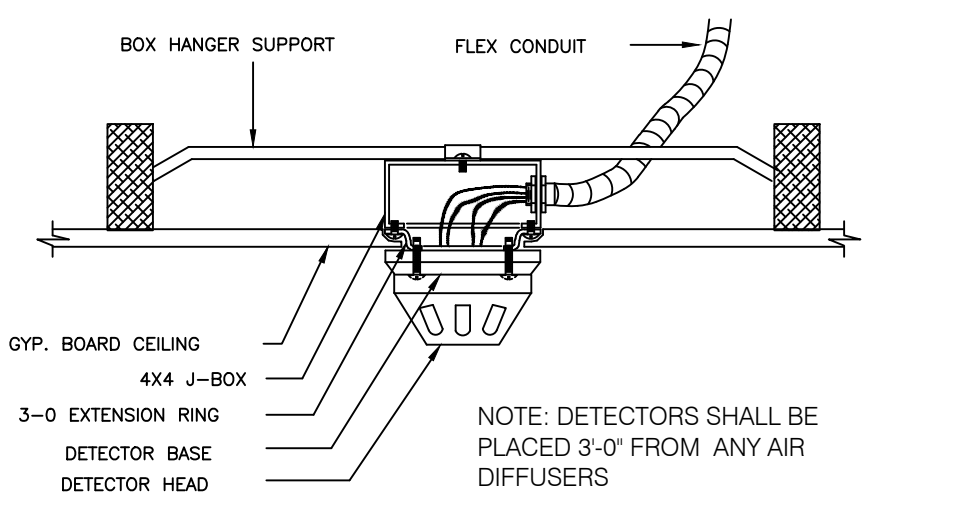
SUSPENDED CEILING DEVICE
N.T.S.



J-BOX DETAIL
N.T.S.



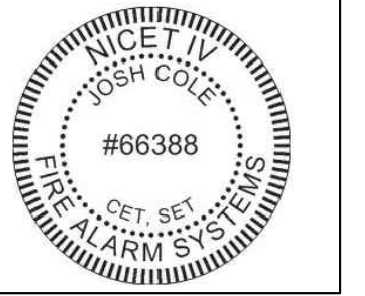
DEVICE WALL MOUNT DETAIL
N.T.S.



GYP. BOARD DEVICE
N.T.S.



Josh Cole
Operations Manager, SET,
CAT
NICE-T-IV Fire Alarms #66388
NICET II Inspection and Testing of
Fire Alarm Systems
FCC GRO. FRN#0029798212
NTS CAT Level 1
NC Fire/LV #16269-SP-FALV
NC Burglar #2419-CSA
SC F/A #FAC 13687
SC Burglar #BAG 13882



JUNIPER VILLAGE APARTMENTS
PARKER LANE
LILLINGTON, NC 27546

DIAMOND
ELECTRONICS
INC.
211 TOWN CENTER
DRIVE
LDCUST, NC
28097
PHONE:
704-888-0223
FAX:
704-888491

PLAN NAME:
SK-5208
PANEL
DETAILS

DRAWN BY: DRR CHECKED BY: DRR

DOCUMENT DATE: 19-Apr-23

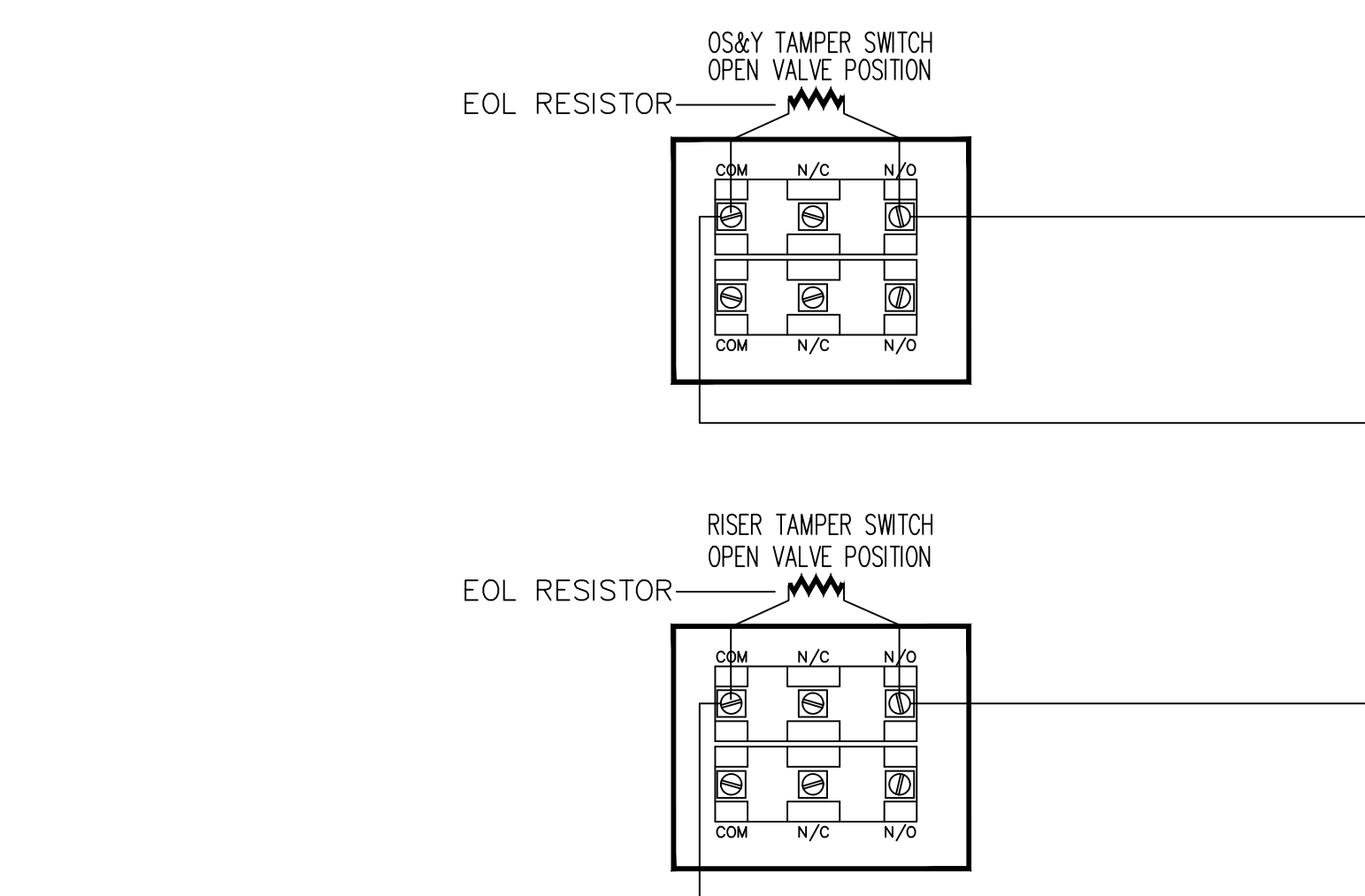
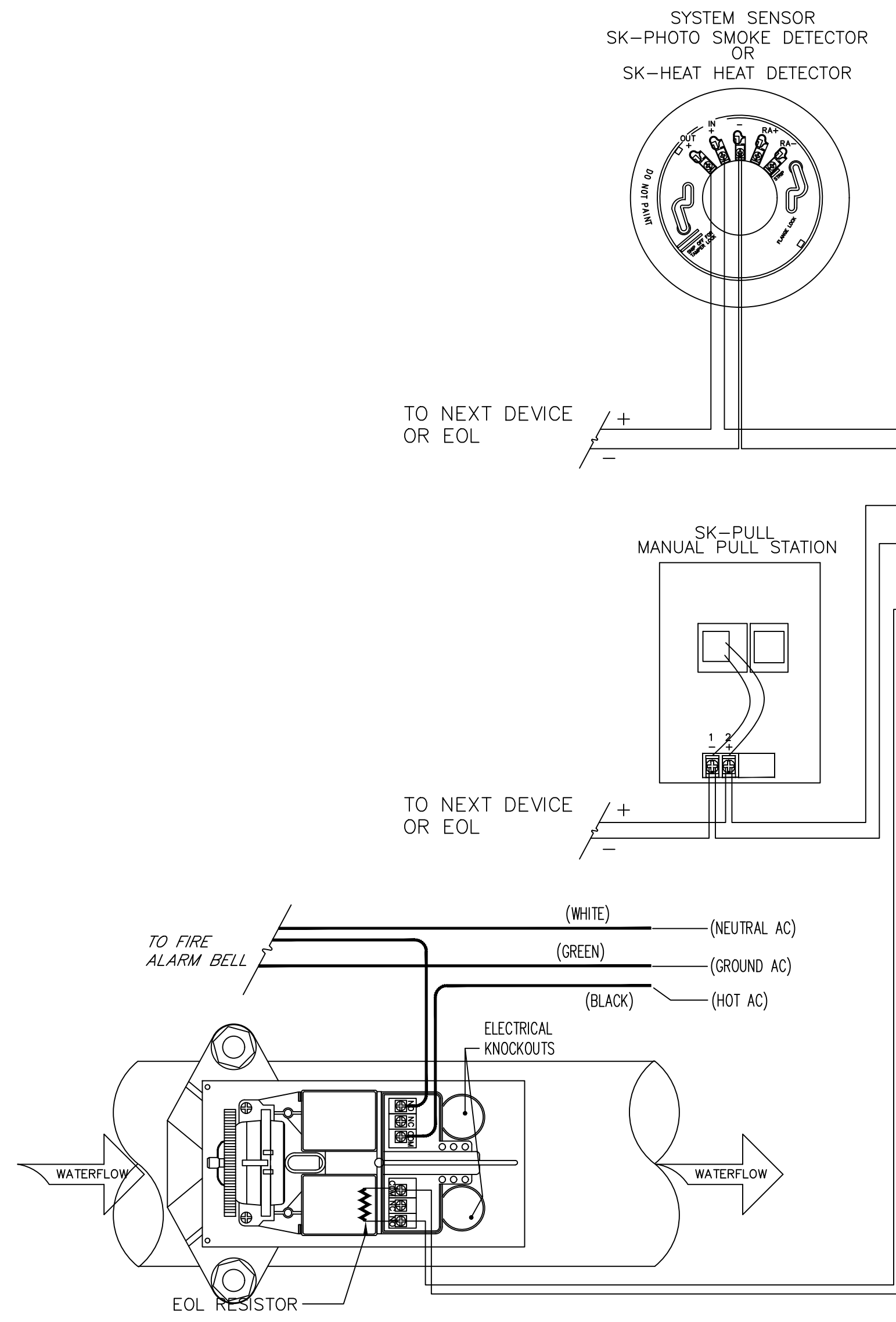
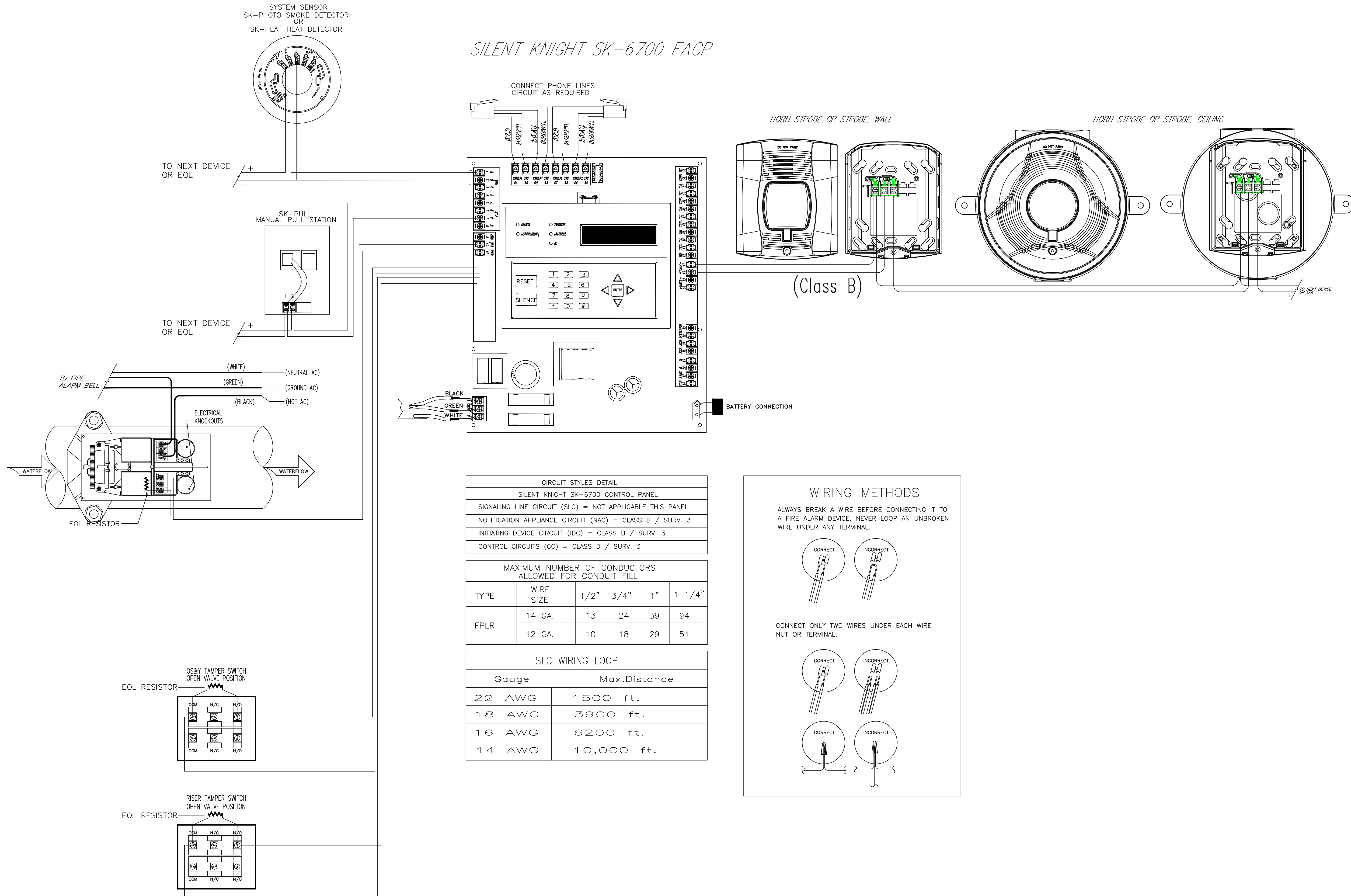
ISSUED FOR	DATE

REVISION	DATE	BY

SHEET
FA-6

PLANS MUST BE PRINTED 24X36 TO HAVE CORRECT SCALE.

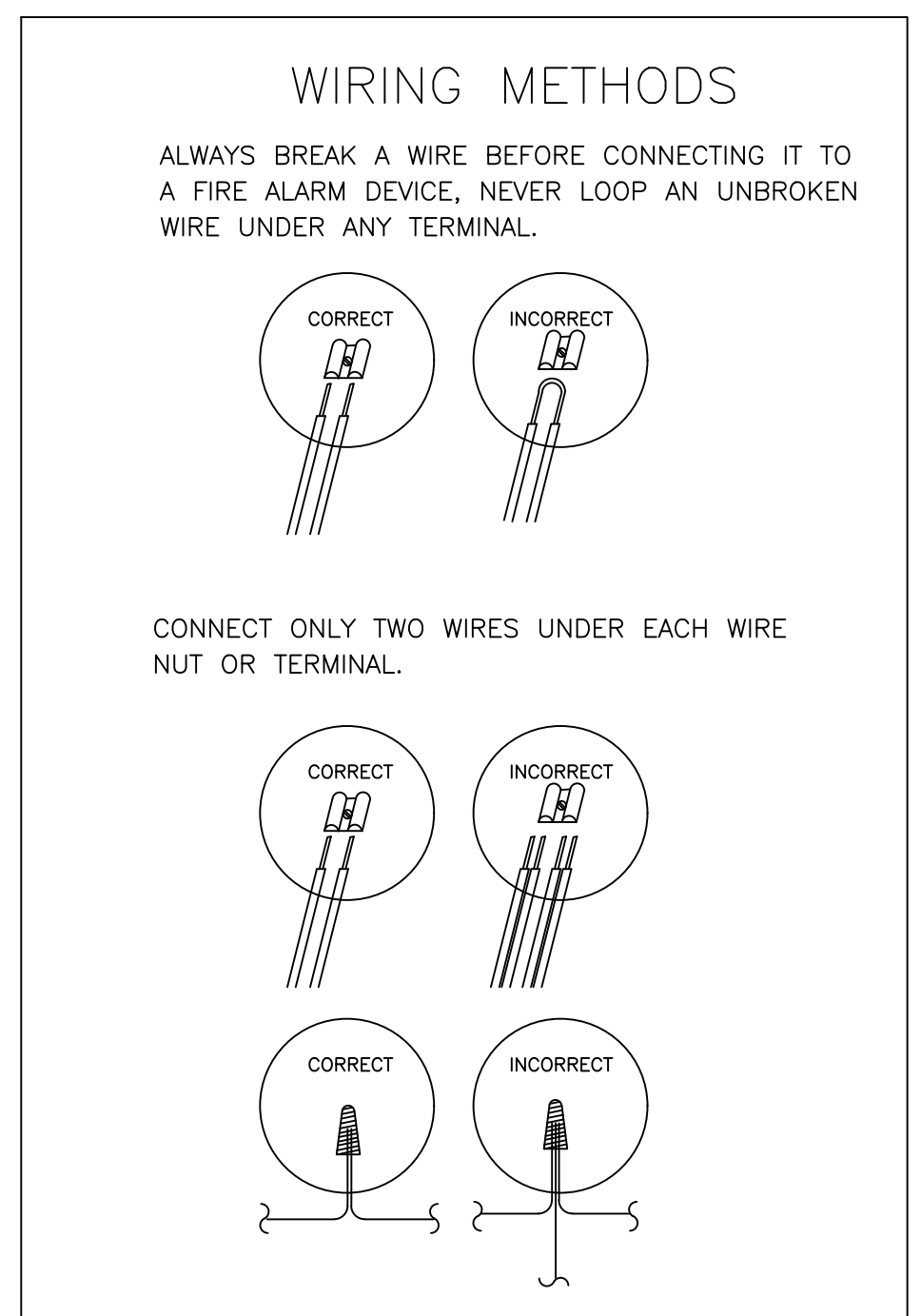
SILENT KNIGHT SK-6700 FACP



CIRCUIT STYLES DETAIL	
SILENT KNIGHT SK-6700 CONTROL PANEL	
SIGNALLING LINE CIRCUIT (SLC) = NOT APPLICABLE THIS PANEL	
NOTIFICATION APPLIANCE CIRCUIT (NAC) = CLASS B / SURV. 3	
INITIATING DEVICE CIRCUIT (IDC) = CLASS B / SURV. 3	
CONTROL CIRCUITS (CC) = CLASS D / SURV. 3	

MAXIMUM NUMBER OF CONDUCTORS ALLOWED FOR CONDUIT FILL					
TYPE	WIRE SIZE	1/2"	3/4"	1"	1 1/4"
FPLR	14 GA.	13	24	39	94
	12 GA.	10	18	29	51

SLC WIRING LOOP	
Gauge	Max. Distance
22 AWG	1500 ft.
18 AWG	3900 ft.
16 AWG	6200 ft.
14 AWG	10,000 ft.

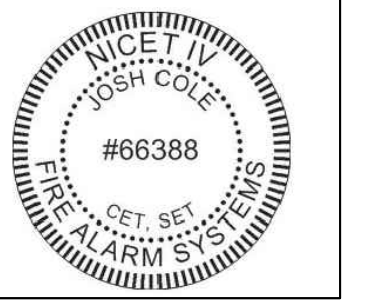


NOTE: THIS DIAGRAM IS FOR REFERENCE PURPOSES ONLY. ACTUAL DEVICES AND NUMBER OF DEVICES MAY (AND WILL) VARY. REFER TO EQUIPMENT LEGEND AND FLOOR PLANS FOR EXACT COUNT, TYPES OF DEVICES AND THEIR INSTALLED LOCATIONS.

Model PS-10 Distributed Power Module



Josh Cole
Operations Manager, SET,
CAT
NICE-T-IV Fire Alarms #66388
NICE-T II Inspection and Testing of
Fire Alarm Systems
FCC GROU. FRN#0029798212
NTS CAT Level 1
NC Fire LV #16269-SP-FALV
NC Burglar #2419-CSA
SC F/A #FAC 13687
SC Burglar #BAG 13852



JUNIPER VILLAGE APARTMENTS
PARKER LANE
LILLINGTON, NC 27546

DIAMOND ELECTRONICS INC.
211 TOWN CENTER DRIVE
LOCUST, NC 28097
PHONE: 704-888-0223
FAX: 704-888491

PLAN NAME:
PS-10
DETAILS

DRAWN BY: DRR CHECKED BY: DRR

DOCUMENT DATE: 19-Apr-23

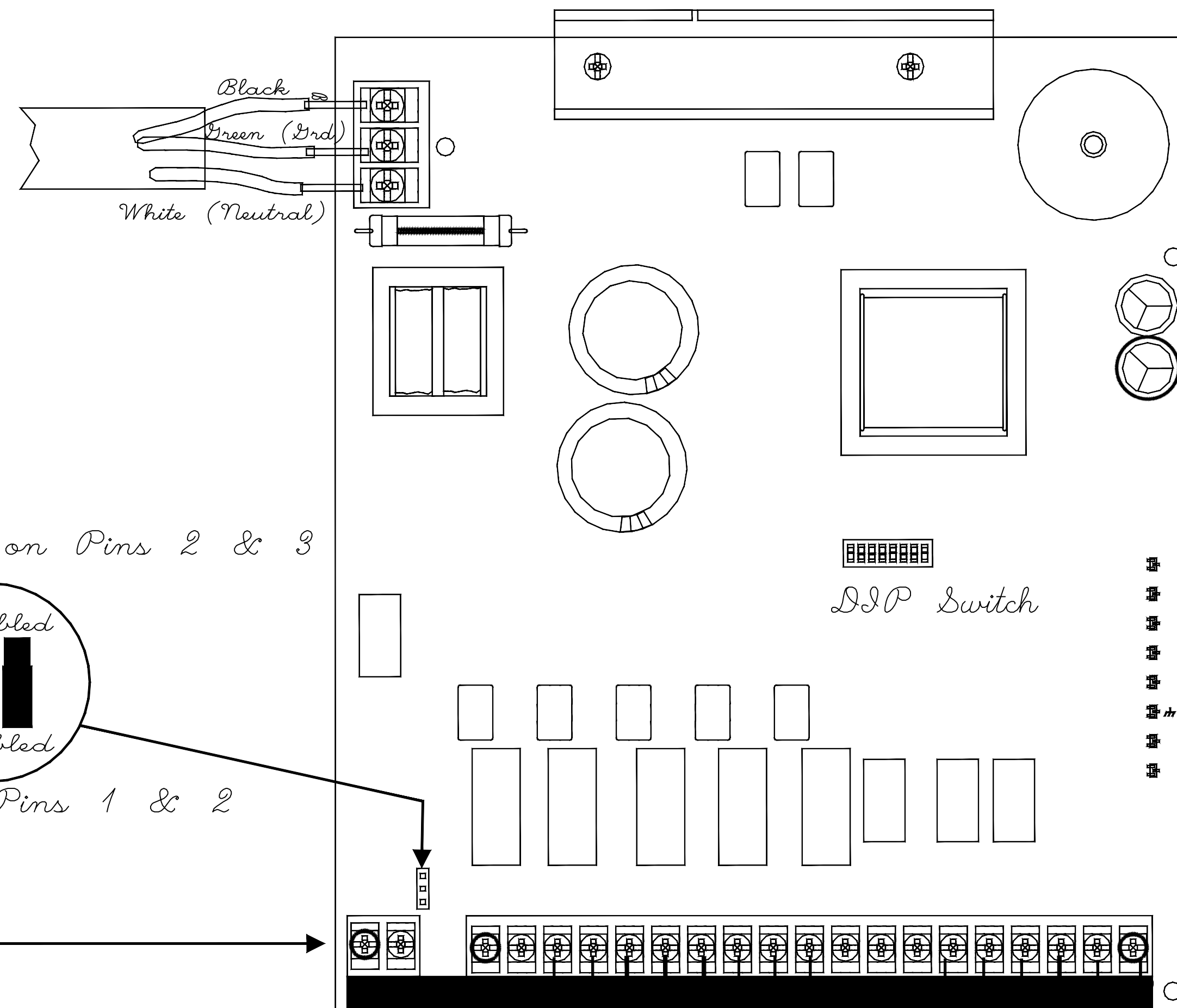
ISSUED FOR: DATE:

REVISION	DATE	BY
▲		
▲		
▲		
▲		

SHEET

FA-7

PLANS MUST BE PRINTED 24X36 TO HAVE CORRECT SCALE.



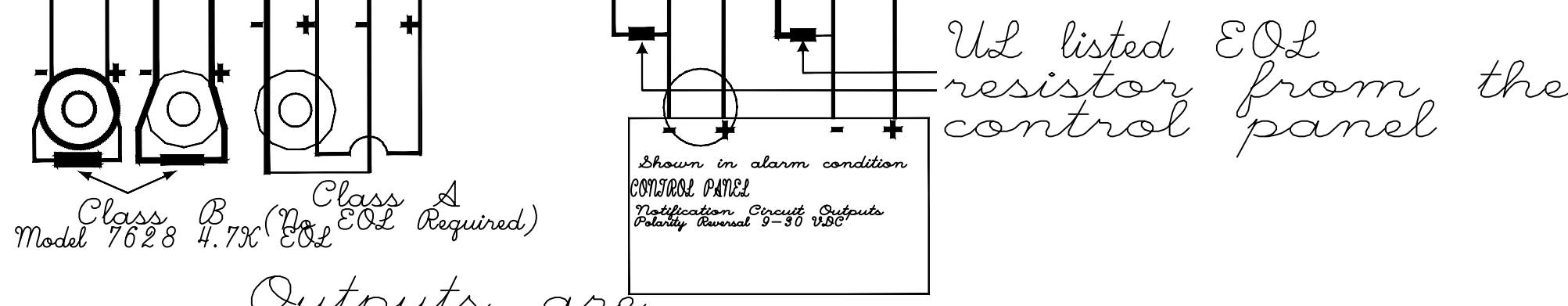
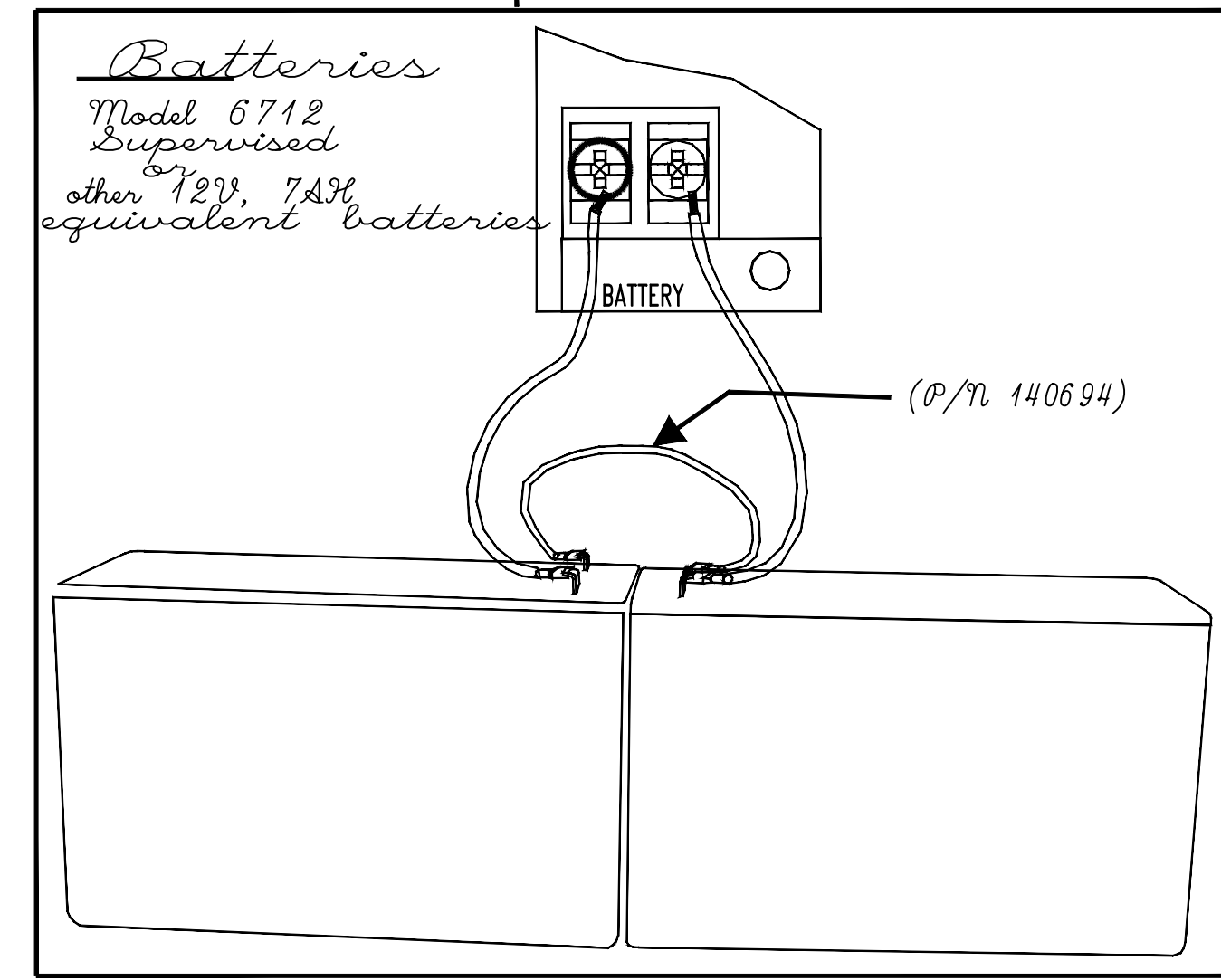
Enabled if Jumper on Pins 2 & 3

Earth ground Fault Detection



Disabled if Jumper on Pins 1 & 2

- On (yellow) = Output trouble
- On (yellow) = Aux power trouble
- On (yellow) = Earth ground fault
- On (yellow) = Low battery
- On (green) = AC power is present



Outputs are power limited per UL 864
Supervised Notification Circuits
For proper supervision use in/out wiring method.
UL listed audible alarm indicators. See the manual for approved notification appliances. (Non-coded)

Electrical Ratings

Input Voltage	120 VAC
Input Current	3 A
Input Frequency	60hz
Output Circuits (OUT1 - OUT4)	24 VDC
Trouble	3 amp
	2.5 A @ 250 VAC
	2.5 A @ 30 VDC
Aux Power	24 VDC, 3 amp

Agency Listings/Requirements:

NFPA
For local service. Install in accordance with NFPA 72.
NFPA
Approved by the City of New York Department of Buildings. MEA-429-92-E VOL IV
E.C.C. Information
This device has been verified to comply with FCC Rules Part 15, Class A. Operation is subject to the following conditions:
1) This device may not cause radio interference;
2) This device must accept any interference received including any that may cause undesired operation.