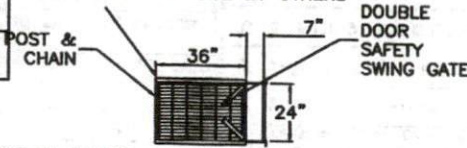
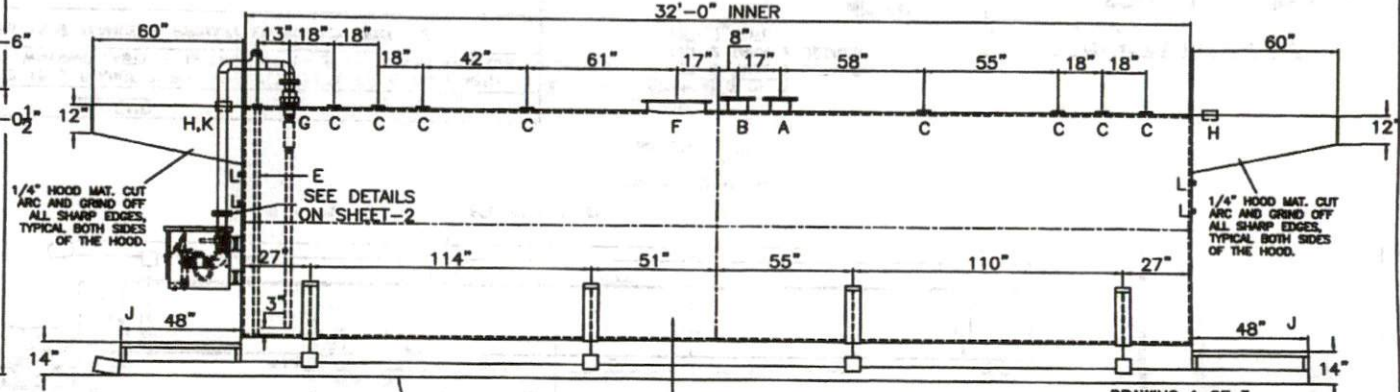
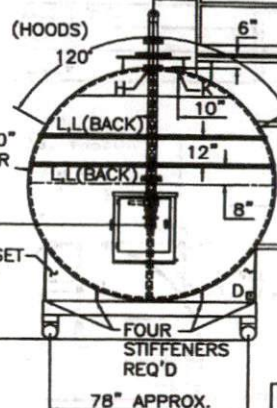


NOTE: ALL RIGHTS RESERVED. THIS DRAWING MUST NOT BE REPRODUCED IN ANY FORM WITHOUT THE WRITTEN PERMISSION OF HIGHLAND TANKS. HIGHLAND TANKS SHALL BE RESPONSIBLE ONLY FOR ITEMS INDICATED ON THIS FABRICATION DRAWING UNLESS OTHERWISE NOTED. CUSTOMER IS RESPONSIBLE FOR VERIFYING CORRECTNESS OF SIZE AND LOCATION OF FITTINGS, ACCESSORIES, AND COATINGS SHOWN ON THIS DRAWING. TOUCH UP OF FINISHED PAINT IS REQUIRED BY INSTALLATION CONTRACTOR. TOUCH UP PAINT SHIPPED WITH TANK.

HTM STD VERTICAL EXTERNAL LADDER, PLATFORM & SAFETY SWING GATE. (OSHA COMPLIANT) SAFETY YELLOW. SHIPPED LOOSE FOR INSTALLATION ON SITE BY OTHERS



SAFETY CHAINS TOP AND MID RAIL LEVELS

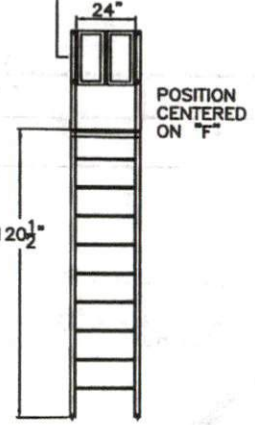


DRAWING 1 OF 3
SHEET-1 TANK 1 DETAILS
SHEET-2 TANK 2 DETAILS
SHEET-3 NOTES

Spectru... payments... Your... time... of... the... to... make... been received. Confirmation code: 074331701. Check your...

| DESIGN DATA | |
|-------------------------|--|
| CAPACITY | 12,000 GALLONS |
| TYPE | DOUBLE WALL - TYPE I 360° |
| NO. REQ. | 1 |
| OPERATING PRESSURE | ATMOSPHERIC |
| SPECIFIC GRAVITY | 1.0 |
| TANK MATERIAL | MED CARBON STEEL |
| THICKNESS - INNER HEADS | 5/16" SHELL: 1/4" |
| THICKNESS - OUTER HEADS | 7 GA SHELL: 7 GA |
| CONSTRUCTION | INNER - LAP WELD OUTSIDE ONLY OUTER - LAP WELD OUTSIDE ONLY |
| TANK TEST | INNER - 5 PSIG OUTER - +3 PSIG OR 13"hg VACUUM |
| INT. FINISH | NONE |
| EXT. FINISH | 6 PART, FINISH GRAY URETHANE |
| LABEL | UL 12 |

| LEGEND | |
|--------|--|
| A | 8" FFSO 150# FLANGE THROUGH OUTER SHELL ONLY, MARK WITH SPECIAL WARNING LABEL - INTERSTITIAL EMERGENCY VENT USE ONLY |
| B | 8" FFSO 150# FLANGE - PRIMARY EMERGENCY VENT USE |
| C | 4" FITTING |
| D | 3" x 3" PLATE w/ 1/2" (MIN.) HOLE ON CENTER (GROUND LUG- ONE REQ'D) |
| E | 2" INTERNAL INTERSTITIAL MONITOR PIPE |
| F | 24" TIGHT BOLT MANWAY w/ 1/8" FIBREFLEX GASKET MATERIAL |
| G | 6" FITTING FOR CUSTOMER SUPPLIED OVERFILL PREVENTION VALVE |
| H | 6" DIA PIPE SLEEVE X 4" LONG HALF INSIDE & HALF OUTSIDE OF CANOPY |
| J | PUMP MOUNT 48" X SKID WIDTH X 1/4" PLATE TOP ON 2" ANGLE FRAME |
| K | 4" DIA PIPE SLEEVE X 4" LONG HALF INSIDE & HALF OUTSIDE OF CANOPY |
| L | 1-1/2" UNISTRUT WELDED TO TANK HEAD |



| | | | | | | | |
|--|-----------|---------|--------|--------|-----|--------|----------|
| ADDED "K" AND "L" UNISTRUT PIECES | 03/21/22 | 001 | | | | | |
| ADDED PM AND HOODS, MOVED ACCESS EQ, ADD (3) "C'S" | 03/11/22 | 001 | | | | | |
| Highland Tank <small>UNLESS NOTED, TOLERANCES ARE +/- 1"</small> | | | | | | | |
| 12,000 GAL 96" Ø DW SKID TANK TANK 1 | | | | | | | |
| CUSTOMER: PHOENIX PUMP GREENSBORO, NC. | | | | | | | |
| PROJECT: GAINES OIL GOLDSTON, NC. | | | | | | | |
| QUOTE NO: | 517240 | CHK BY: | | | | | |
| SCALE | 1/4" = 1' | DATE | 3/8/22 | DWG BY | 002 | DWG NO | 120101-1 |

3/23/2022
Chf Poole