

CONCEPTUAL FLOOR PLAN

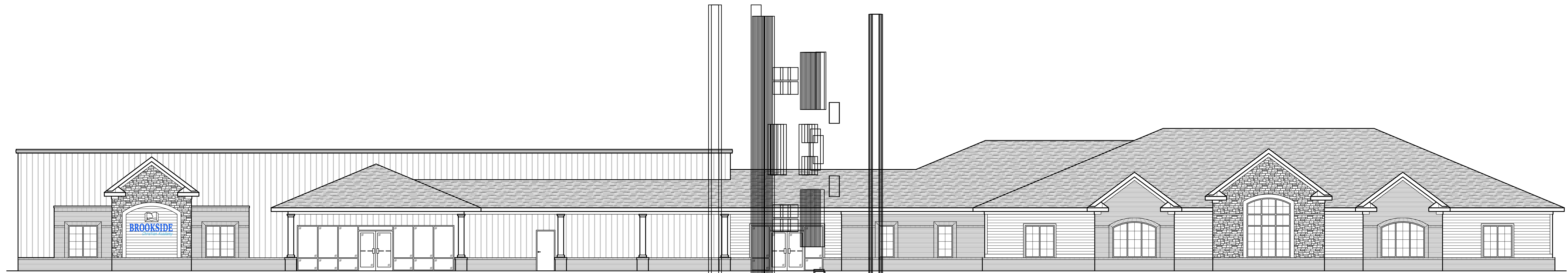
SCALE: 1/8" = 1'-0"

EXISTING:	9,405 SF
NEW:	11,272 SF
TOTAL:	20,676 SF

**PRELIMINARY
NO FOR
CONSTRUCTION**

REV.	DATE	DESCRIPTION

New Facility for:
Brookside Christian Academy
 Dunn, North Carolina



CONCEPTUAL FRONT ELEVATION

SCALE: 1/8" = 1'-0"

COPYRIGHT 2022 © SMITH ENGINEERING AND DESIGN, P.A. - ALL RIGHTS RESERVED.
SMITH ENGINEERING AND DESIGN, P.A.
 1103 Gracie Pl., Suite A
 Goldsboro, N.C. 27534
 Corporation License No. C-2241
 Phone: 919.736.2141 Fax: 919.736.2142

**PRELIMINARY
 NOT FOR
 CONSTRUCTION**

REV.	DATE	DESCRIPTION

New Facility for:
Brookside Christian Academy
 Dunn, North Carolina

DATE: 1 November 2022
 DRAWN BY: T.B.
 SCALE: 1/8" = 1'-0"

G-2