

FOR QUESTIONS, CALL THE  
Eastern North Carolina  
REGION 36  
PHONE: (919) 825-3566  
EMAIL: reg36@captiveaire.com

**PATENT NUMBERS**

AC-PSP (UNITED STATES) - US PATENT 7963830 B2.  
AC-PSP WALL (CANADA) - CA PATENT 2820509.  
AC-PSP ISLAND (CANADA) - CA PATENT 2520330.

**HOOD INFORMATION - JOB#6130024**

HOOD NO	TAG	MODEL	MANUFACTURER	LENGTH	MAX COOKING TEMP	TYPE	APPLIANCE DUTY	DESIGN CFM/FT	TOTAL EXH CFM	EXHAUST PLENUM RISER(S)				TOTAL SUPPLY CFM	HOOD CONSTRUCTION	HOOD CONFIG				
										WIDTH	LENG	HEIGHT	DIA			CFM	VEL	SP	END TO END	RDW
1		4812 SND-2-PSP-F	CAPTIVEAIRE	10' 0"	450 DEG	I	MEDIUM	200	2000	10"	14"	4"		2000	2057	-1.172'	1600	430 SS WHERE EXPOSED	ALONE	ALONE

**HOOD INFORMATION**

HOOD NO	TAG	FILTER(S)				LIGHT(S)				UTILITY CABINET(S)				FIRE SYSTEM	HOOD HANGING WEIGHT		
		TYPE	QTY	HEIGHT	LENGTH	EFFICIENCY @ 7 MICRONS	QTY	TYPE	WIRE GUARD	LOCATION	SIZE	TYPE	SIZE			ELECTRICAL MODEL #	SWITCHES QUANTITY
1		CAPTRATE SOLID FILTER	7	16"	16"	85% SEE FILTER SPEC	6	L55 SERIES E26	NO	WALL MNT	12"x48"x24"	TANK FS	4.0/4.0	SC-111110MA	1 LIGHT 1 FAN	YES	552 LBS

**HOOD OPTIONS**

HOOD NO	TAG	OPTION
1		FIELD WRAPPER 18.00" HIGH FRONT, LEFT, RIGHT. BACKSPLASH 68.00" HIGH X 120.00" LONG 430 SS VERTICAL. RIGHT QUARTER END PANEL 27" TOP WIDTH, 0" BOTTOM WIDTH, 27" HIGH 430 SS. LEFT QUARTER END PANEL 27" TOP WIDTH, 0" BOTTOM WIDTH, 27" HIGH 430 SS. INSULATION FOR BACK OF HOOD. RISER SENSOR INSTALL 6IN PLEN.

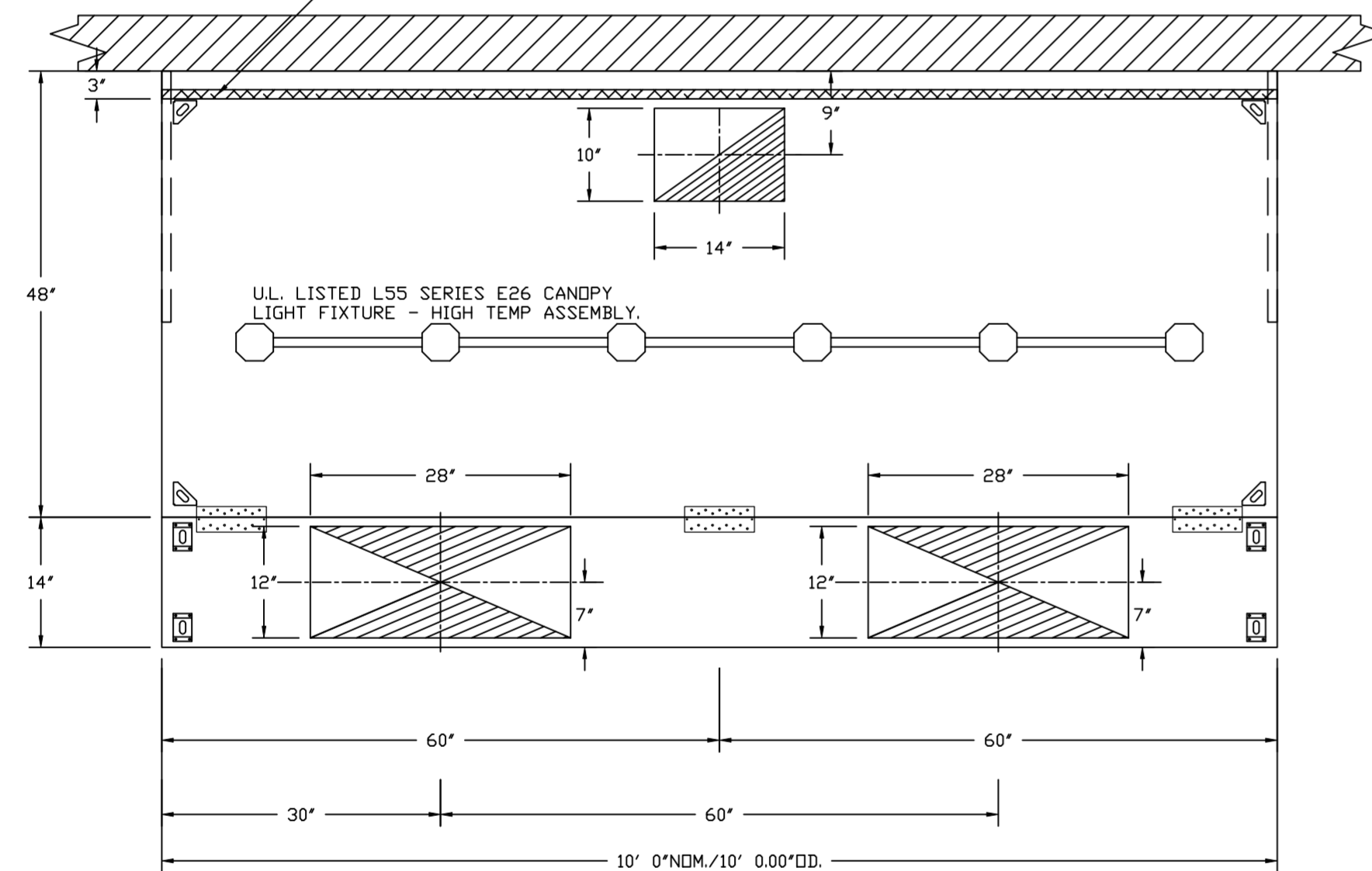
**PERFORATED SUPPLY PLENUM(S)**

HOOD NO	TAG	POS	LENGTH	WIDTH	HEIGHT	TYPE	RISER(S)				
							WIDTH	LENG	DIA	CFM	SP
1		Front	120"	14"	6"	MUA	12"	28"		800	0.206'
						MUA	12"	28"		800	0.206'

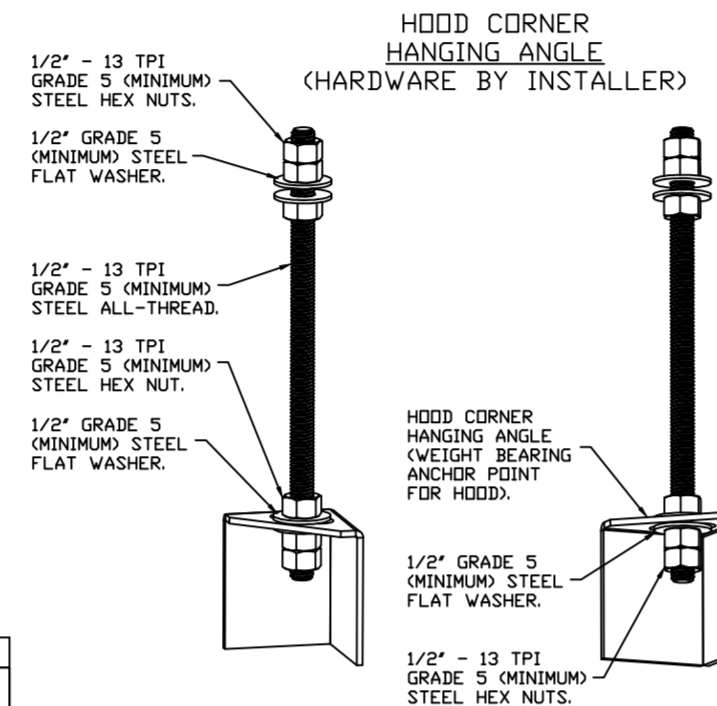
**WALL-MOUNT UTILITY CABINET**

HOOD NO	LOCATION	SIZE	UTILITY CABINET(S)			WEIGHT
			FIRE SYSTEM	ELECTRICAL	SWITCHES	
1	WALL MNT	12"x48"x24"	TANK FS	4.0/4.0	SC-111110MA 1 LIGHT 1 FAN	340.00 LBS

1" LAYER OF INSULATION FACTORY INSTALLED IN INTERNAL BACK STANDOFF. MEETS 0 INCH REQUIREMENTS FOR CLEARANCE TO COMBUSTIBLE SURFACES.



PLAN VIEW - HOOD #1  
10' 0.00" LONG 4812SND-2-PSP-F



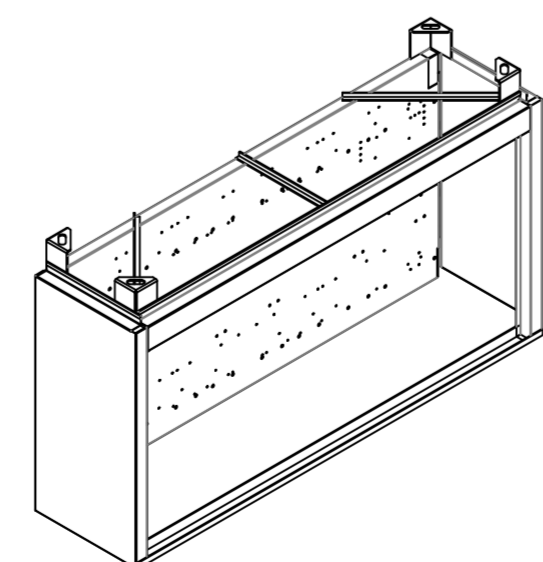
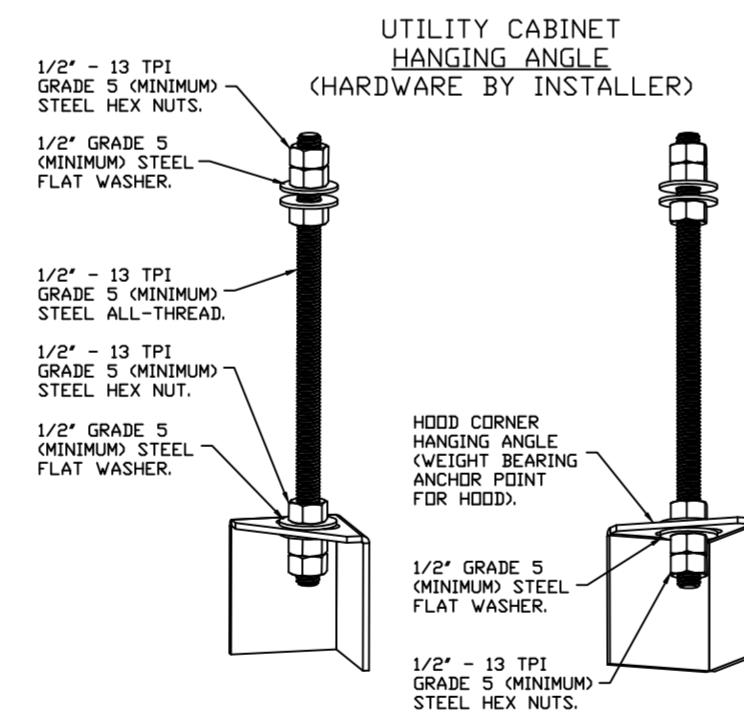
**ASSEMBLY INSTRUCTIONS**

HANGING ANGLE MUST BE SUPPORTED WITH 1/2" - 13 TPI GRADE 5 (MINIMUM) ALL-THREAD. SANDWICH HANGING ANGLES AND CEILING ANCHOR POINTS WITH 1/2" GRADE 5 (MINIMUM) STEEL FLAT WASHERS AND 1/2" - 13 TPI GRADE 5 (MINIMUM) HEX NUTS AS SHOWN. MUST USE DOUBLED HEX NUT CONFIGURATION BENEATH HOOD HANGING ANGLES AND ABOVE CEILING ANCHORS. MAINTAIN 1/4" OF EXPOSED THREADS BENEATH BOTTOM HEX NUT. TORQUE ALL HEX NUTS TO 57 FT-LBS.

**WALL-MOUNT UTILITY CABINET ASSEMBLY INSTRUCTIONS**

HANGING ANGLE MUST BE SUPPORTED WITH 1/2" - 13 TPI GRADE 5 (MINIMUM) ALL-THREAD. SANDWICH HANGING ANGLES AND CEILING ANCHOR POINTS WITH 1/2" GRADE 5 (MINIMUM) STEEL FLAT WASHERS AND 1/2" - 13 TPI GRADE 5 (MINIMUM) HEX NUTS AS SHOWN. MUST USE DOUBLED HEX NUT CONFIGURATION BENEATH UTILITY CABINET HANGING ANGLES AND ABOVE CEILING ANCHORS. MAINTAIN 1/4" OF EXPOSED THREADS BENEATH BOTTOM HEX NUT. TORQUE ALL HEX NUTS TO 57 FT-LBS.

CABINET TO BE HUNG BY HOOD INSTALLER. SEE UTILITY CABINET SCHEDULE FOR CABINET SIZE.



**SPECIFICATION: CAPTRATE® GREASE-STOP® SOLID FILTER**

THE CAPTRATE GREASE-STOP SOLID FILTER IS A SINGLE-STAGE FILTER FEATURING A UNIQUE S-Baffle DESIGN IN CONJUNCTION WITH A SLOTTED REAR Baffle DESIGN, TO DELIVER EXCEPTIONAL FILTRATION EFFICIENCY.

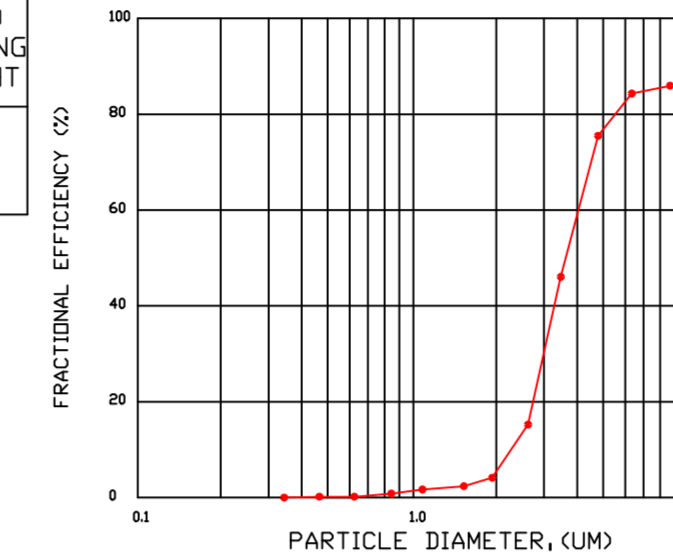
FILTER IS STAINLESS STEEL CONSTRUCTION, AND SIZED TO FIT INTO STANDARD 2-INCH DEEP HOOD CHANNEL(S).

UNITS SHALL INCLUDE STAINLESS STEEL HANDLES AND A FASTENING DEVICE TO SECURE THE TWO COMPONENTS WHEN ASSEMBLED.

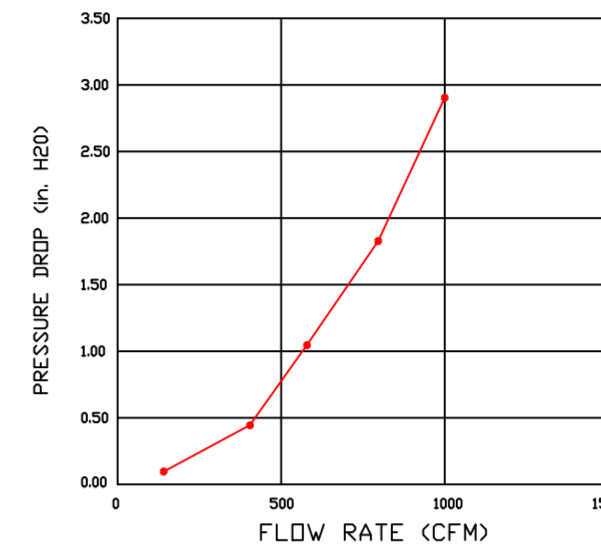
GREASE EXTRACTION EFFICIENCY PERFORMANCE SHALL REMOVE AT LEAST 75% OF GREASE PARTICLES FIVE MICRONS IN SIZE, AND 85% GREASE PARTICLES SEVEN MICRONS IN SIZE AND LARGER, WITH A CORRESPONDING PRESSURE DROP NOT TO EXCEED 1.0 INCHES OF WATER GAUGE.

THE CAPTRATE GREASE-STOP SOLID WAS TESTED TO ASTM STANDARD ASTM F2519-05, MANUFACTURER APPROVED FOR USE IN SOLID FUEL APPLICATIONS AS A SPARK ARRESTER.

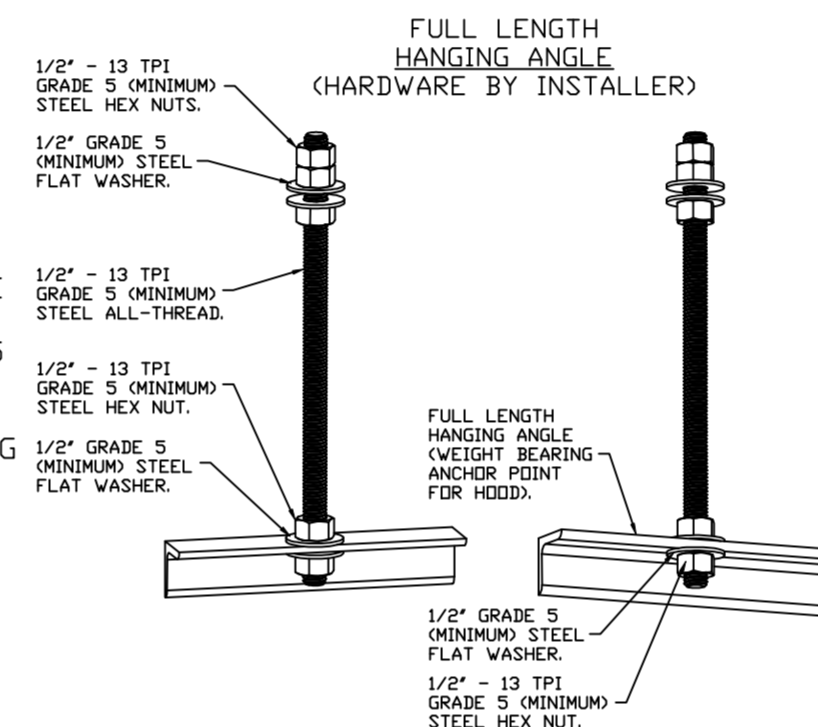
**EFFICIENCY VS. PARTICLE DIAMETER**



**PRESSURE DROP VS. FLOW RATE**

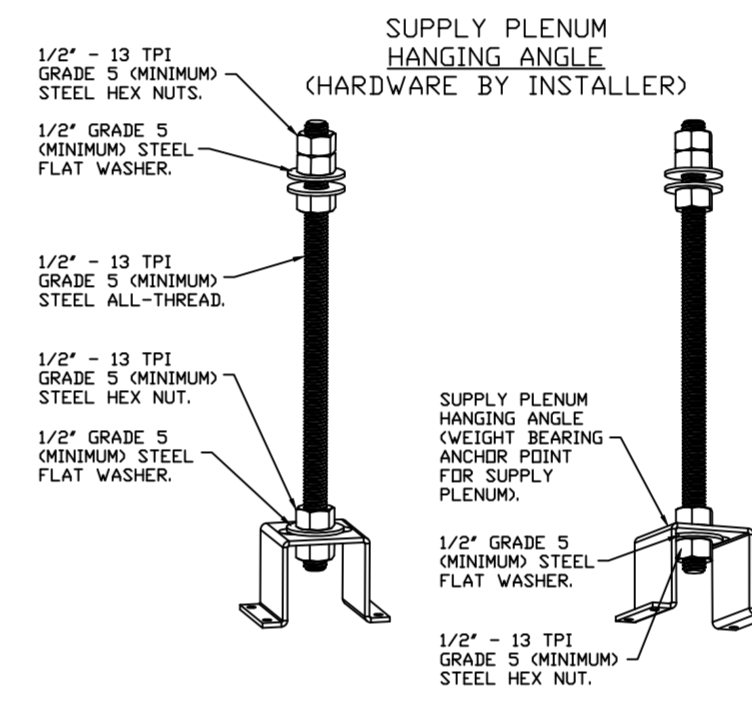


CAPTRATE FILTERS ARE BUILT IN COMPLIANCE WITH:  
NFPA #96.  
NSF STANDARD #2.  
UL STANDARD #1046.  
INT. MECH. CODE (IMC).  
ULC-S649.



**ASSEMBLY INSTRUCTIONS**

HANGING ANGLE MUST BE SUPPORTED WITH 1/2" - 13 TPI GRADE 5 (MINIMUM) ALL-THREAD. SANDWICH HANGING ANGLES AND CEILING ANCHOR POINTS WITH 1/2" GRADE 5 (MINIMUM) STEEL FLAT WASHERS AND 1/2" - 13 TPI GRADE 5 (MINIMUM) HEX NUTS AS SHOWN. MUST USE DOUBLED HEX NUT CONFIGURATION ABOVE CEILING ANCHORS. SINGLE HEX NUT BENEATH HANGING ANGLE IS ACCEPTABLE FOR FULL LENGTH HANGING ANGLES. MAINTAIN 1/4" OF EXPOSED THREADS BENEATH BOTTOM HEX NUT. TORQUE ALL HEX NUTS TO 57 FT-LBS.



**ASSEMBLY INSTRUCTIONS**

HANGING ANGLE MUST BE SUPPORTED WITH 1/2" - 13 TPI GRADE 5 (MINIMUM) ALL-THREAD. SANDWICH HANGING ANGLES AND CEILING ANCHOR POINTS WITH 1/2" GRADE 5 (MINIMUM) STEEL FLAT WASHERS AND 1/2" - 13 TPI GRADE 5 (MINIMUM) HEX NUTS AS SHOWN. MUST USE DOUBLED HEX NUT CONFIGURATION ABOVE CEILING ANCHORS. SINGLE HEX NUT BENEATH HANGING ANGLE IS ACCEPTABLE FOR PSP HANGING ANGLES. MAINTAIN 1/4" OF EXPOSED THREADS BENEATH BOTTOM HEX NUT. TORQUE ALL HEX NUTS TO 57 FT-LBS.

**REVISIONS**

DESCRIPTION	DATE

**CAPTIVEAIRE**

www.captiveaire.com

Eastern North Carolina

4641 Paragon Park Rd., Raleigh, NC, 27616 PHONE: (919) 825-3566 FAX: 9192275917 EMAIL: reg36@captiveaire.com

Corner Grill - Angier  
ANGIER, NC, 27501

DATE: 7/26/2023

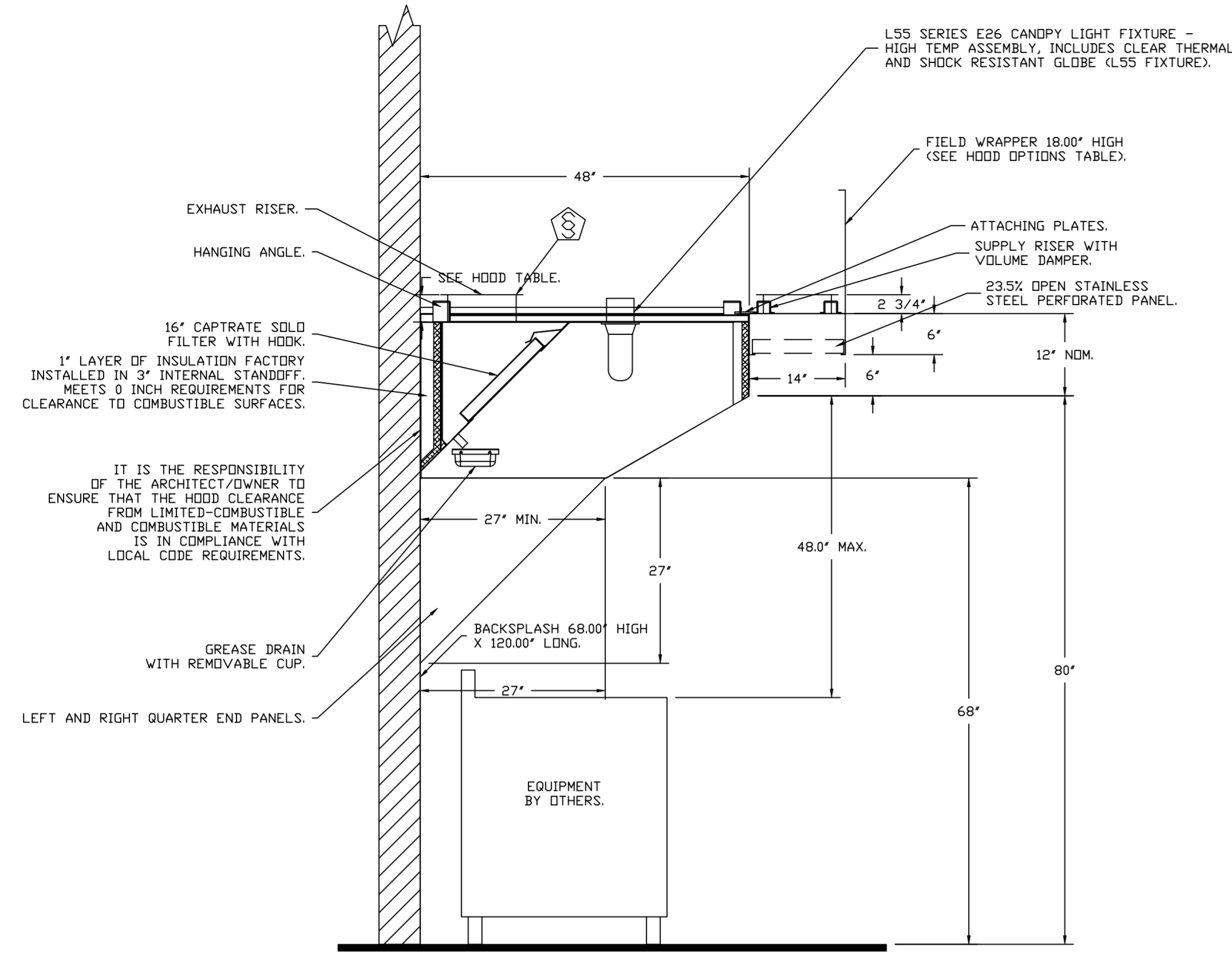
DWG.#:  
6130024

DRAWN BY: REG 36

SCALE:  
3/4" = 1'-0"

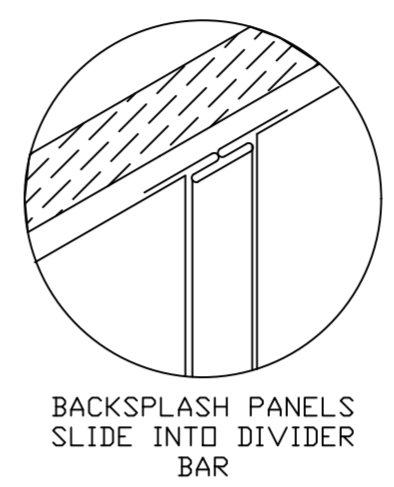
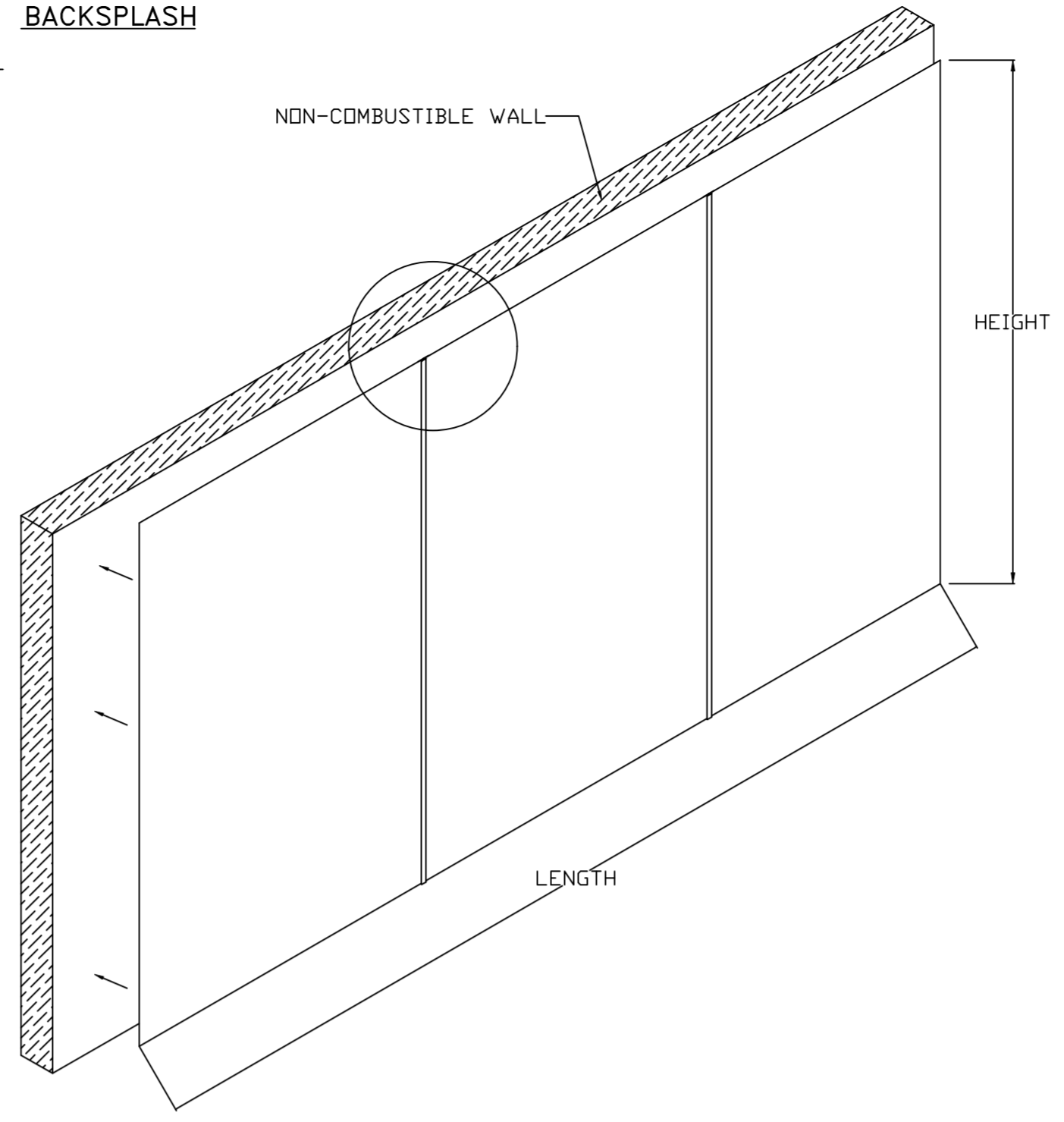
MASTER DRAWING

SHEET NO.  
1



SECTION VIEW - MODEL 4812SND-2-PSP-F  
HOOD - #1

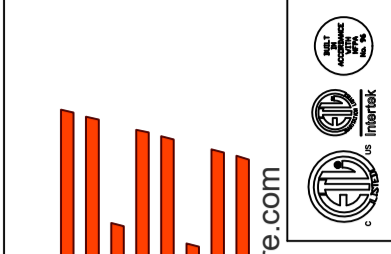
**BACKSPLASH**



- BACKSPLASH IS NOT INSULATED AND IS UNSUITABLE FOR INSTALL AGAINST COMBUSTIBLE WALLS

**REVISIONS**

DESCRIPTION	DATE:



**CAPTIVE**

**Eastern North Carolina**

4641 Paragon Park Rd., Raleigh, NC, 27616 PHONE: (919) 825-3566 FAX: 919-227-5917 EMAIL: reg36@captivair.com

Corner Grill - Angier  
ANGIER, NC, 27501

**DATE:** 7/26/2023

**DWG.#:**  
6130024

**DRAWN BY:** REG 36

**SCALE:**  
3/4" = 1'-0"

**MASTER DRAWING**

**SHEET NO.**  
2

**FIRE SYSTEM INFORMATION - JOB#6130024**

FIRE SYSTEM NO	TAG	TYPE	SIZE	FLOW POINTS	INSTALLATION	
					SYSTEM	LOCATION ON HOOD
1		TANK FS	4.0/4.0	28	WALL UTILITY CABINET LEFT	N/A

**GAS VALVE(S)**

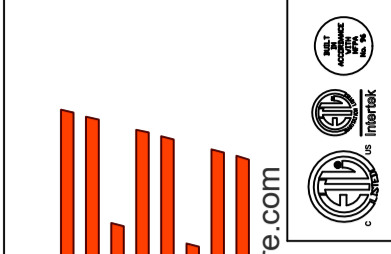
FIRE SYSTEM NO	TAG	TYPE	SIZE	SUPPLIED BY
1		SC ELECTRICAL	2.000	CAPTIVEAIR SYSTEMS

**FIRE SYSTEM PARTS LIST KEY**

FIRE SYSTEM NO	TAG	KEY NUMBER - PART DESCRIPTION	QTY BY FACTORY	QTY BY DIST
		0 - 0 - TANK FIRE SUPPRESSION MAINTENANCE GUIDE UTILITY CABINET LABEL SHEET.	1	0
		0 - 0 - TANK FIRE SUPPRESSION POST-DISCHARGE PROCEDURE UTILITY CABINET LABEL SHEET.	1	0
		0 - 0 - 12-F28021-32144-0T-360 DUCT FIRE THERMOSTAT WITH 12 FOOT WIRE LEADS. NO. CLOSE ON TEMP RISE AT 360°F.	1	0
		0 - 0 - 361091 3/8" BRASS PLUG.	3	0
		0 - 0 - 4429K153 1/2" MALE NPT TO 1/2" FEMALE NPT ELBOW, BRASS.	2	0
		0 - 0 - 4429K422 1/2" X 1/4" BRASS REDUCING BUSHING.	1	0
		0 - 0 - 79425 3/8" NPT FEMALE TO 1/2" MALE PROPPRESS ADAPTER.	3	0
		0 - 0 - 79525 1/2" 90 PRO-PRESS ELBOW WITH 1/2" NPT FEMALE CONNECTION, VIEGA.	1	0
		0 - 0 - 79580 1/2" X 1/2" PRO-PRESS TEE X 1/2" NPT FEMALE CONNECTION, VIEGA.	2	0
		0 - 0 - 87-120042-001 SECONDARY ACTUATOR VALVE (SVA) - SINGLE ACTUATOR, REQUIRES PRIMARY RELEASE ACTUATOR, TANK FIRE SUPPRESSION.	1	0
		0 - 0 - 87-120045-001 HOSE, SECONDARY ACTUATOR HOSE, 7.5' BRAIDED STAINLESS STEEL, TANK FIRE SUPPRESSION.	1	0
		0 - 0 - 87-300001-001 TANK - PRESSURIZED TANK USED FOR TANK FIRE SUPPRESSION.	2	0
		0 - 0 - 87-300030-001 PRIMARY ACTUATOR KIT (PAK) - ACTUATOR AND RELEASE SOLENOID ASSEMBLY, ONE NEEDED PER FIRE SYSTEM, SUPERVISED, TANK FIRE SUPPRESSION.	1	0
		0 - 0 - 87-300152-001 HARDWARE, SVA BOLTS, TANK FIRE SUPPRESSION.	8	0
		0 - 0 - 9055455PC PRO PRESS 1/2 PRESS X PRESS 90 ELBOW LD.	3	0
		0 - 0 - 9097200PC PRO PRESS PC611 1/2 PRESS TEE LD.	6	0
		0 - 0 - 98694A115 HARDWARE, DATANKLOCK LOCKING BRACKET SQUARE NUTS 5/16" ZINC, TANK FIRE SUPPRESSION.	4	0
		0 - 0 - A0034332 JUNCTION BOX FOR MANUAL PULL STATION. 1.5" DEEP BACK BOX, RED COLOR.	1	0
		0 - 0 - A314B4 1/4" NPT SCHRADER VALVE AND CAP, JB INDUSTRIES. 1/4" FLARE X 1/4" MPT HALF UNION. USED ON TANK SERVICE PORT.	1	0
		0 - 0 - B1145 3/8" BLACK IRON 90 ELL.	2	0
		0 - 0 - DATANKLOCK DISCHARGE ADAPTER TANK LOCKING PLATE FOR FIRE SYSTEM TANK INSTALLATION IN UTILITY CABINETS, TANK FIRE SUPPRESSION.	2	0
		0 - 0 - SLPCDN-05FT SUPERVISED LOOP CONNECTION KIT. CONTAINS THE PARTS NEEDED TO CONNECT THE SUPERVISED LOOP BETWEEN END TO END HOODS WITH LESS THAN A 4' GAP. KIT CONTAINS 7 FEET OF BLACK MG WIRE, 7 FEET OF TAN MG WIRE, 5 FEET OF FLEXIBLE CONDUIT, AND TWO 7/8" CONNECTORS.	1	0
		0 - 0 - SLPCDN-15FT SUPERVISED LOOP CONNECTION KIT. CONTAINS THE PARTS NEEDED TO CONNECT THE SUPERVISED LOOP BETWEEN END TO END HOODS WITH LESS THAN A 14' GAP OR BACK TO BACK HOODS. KIT CONTAINS 17 FEET OF BLACK MG WIRE, 17 FEET OF TAN MG WIRE, 15 FEET OF FLEXIBLE CONDUIT, AND TWO 7/8" CONNECTORS.	1	0
		0 - 0 - TANK STRAP TANK STRAP - USED FOR TANK FIRE SUPPRESSION.	6	0
		0 - 0 - TFS-UCTANKBRACKET TANK BRACKET FOR FIRE SYSTEM TANK INSTALLATION IN UTILITY CABINETS, TANK FIRE SUPPRESSION.	2	0
		0 - 0 - WK-283952-000 DISCHARGE ADAPTER, TANK FIRE SUPPRESSION.	2	0
		16 - 16 - 79210 1/2" X 3/8" NPT MALE ADAPTER, VIEGA.	6	0
		16 - 16 - DL-F NOZZLE - TANK PROTECTION APPLIANCE COVERAGE NOZZLE (INCLUDES METAL BLOW OFF CAP, LANYARD, USED WITH CHROME-PLATED PIPE).	6	0
		26 - 26 - QSA-3/8 QUIK SEAL - 3/8" (UL).	6	0
		34 - 34 - A0034331 24VDC SINGLE ACTION MANUAL ACTUATION DEVICE (PUSH/PULL STATION) WITH PROTECTIVE COVER, ONE (1) NORMALLY OPEN CONTACT. RED COLOR.	1	0

**REVISIONS**

DESCRIPTION	DATE



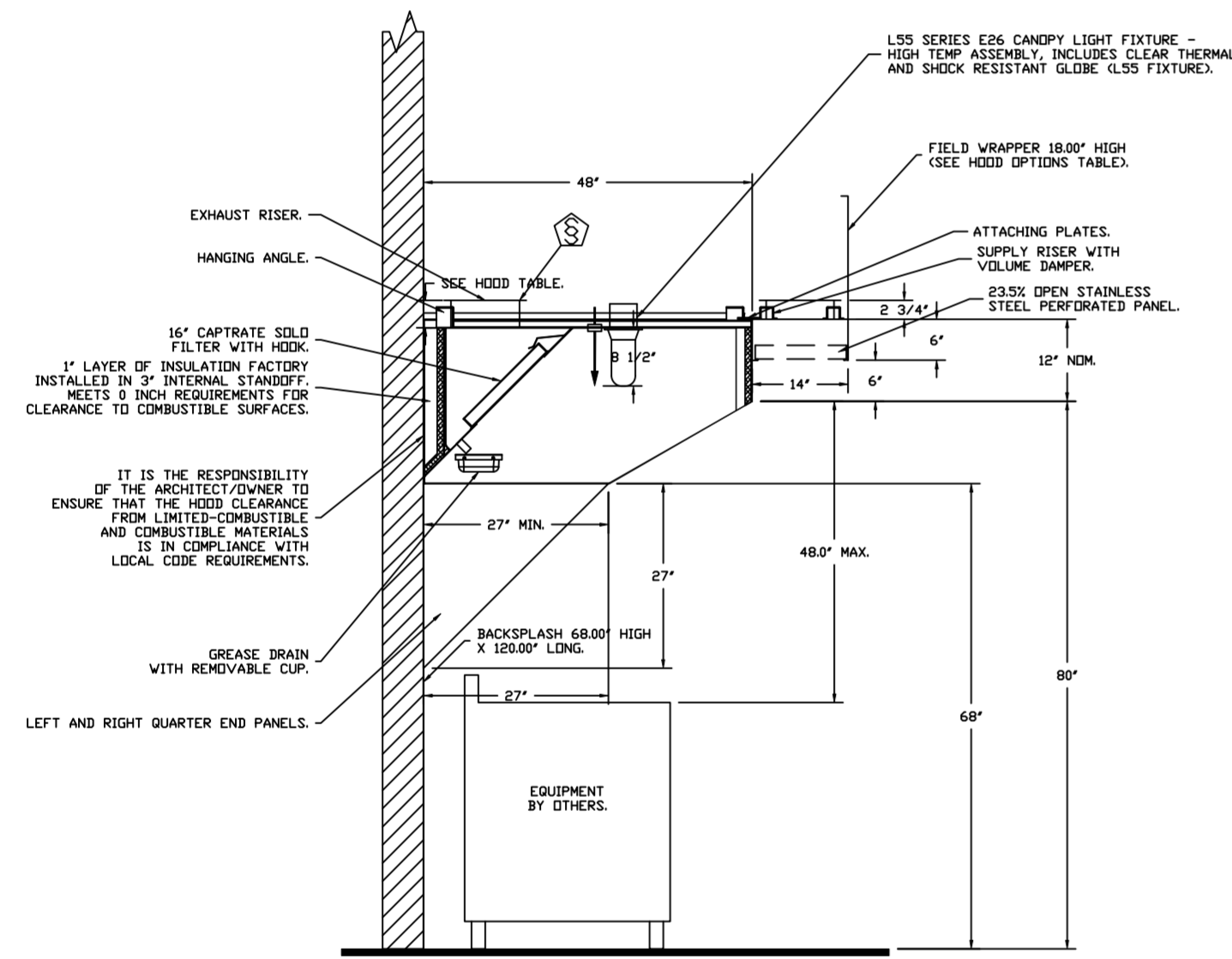
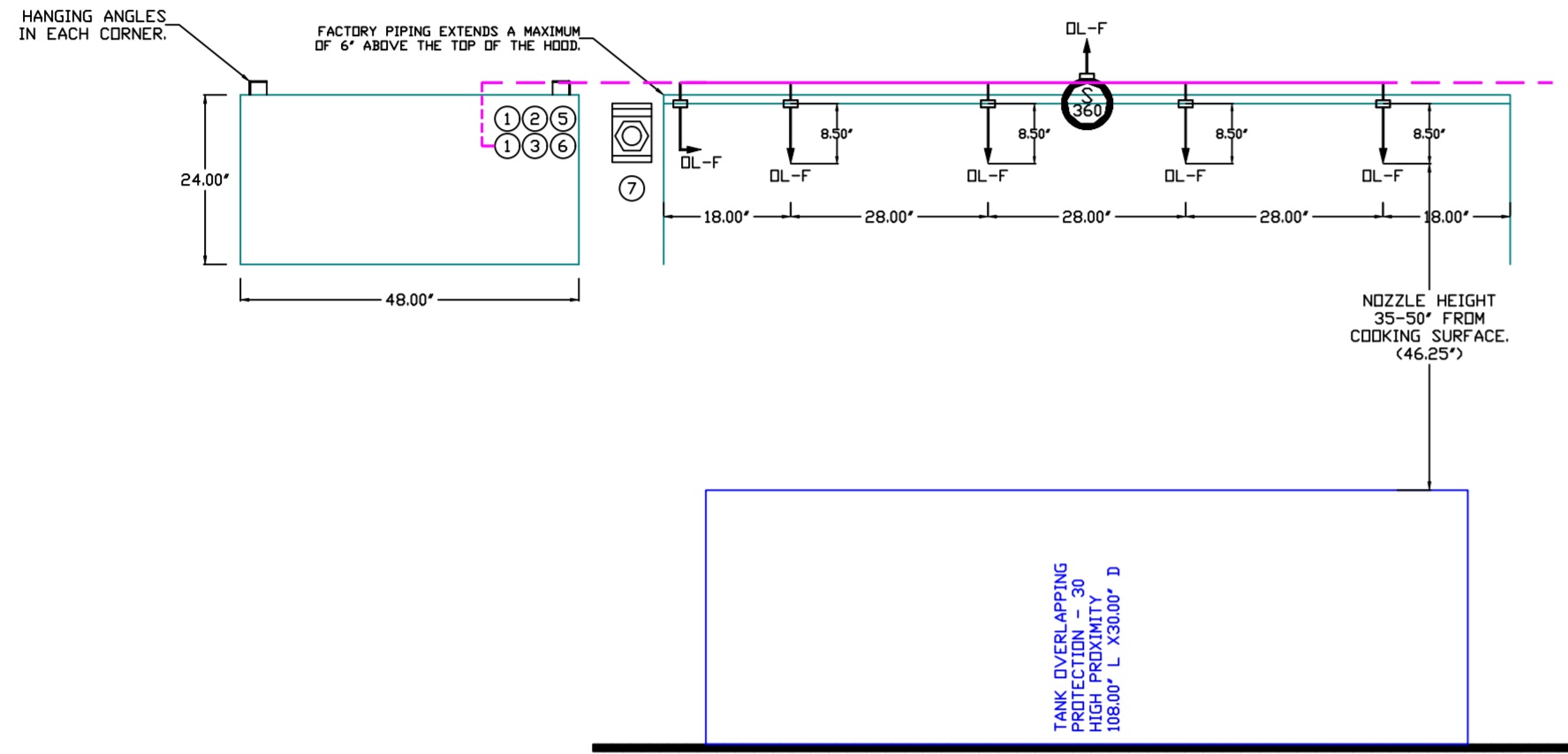
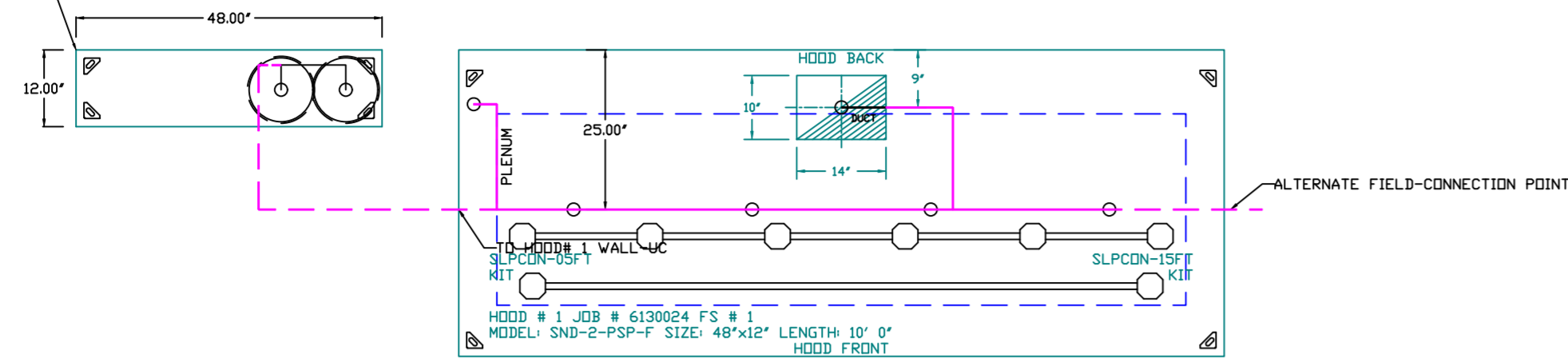
Corner Grill - Angier  
 ANGIER, NC, 27501

DATE: 7/26/2023  
 DWG.#: 6130024  
 DRAWN BY: REG 36  
 SCALE: 3/4" = 1'-0"  
 MASTER DRAWING

SHEET NO.  
 3

www.captivefire.com  
 Eastern North Carolina  
 4641 Paragon Park Rd., Raleigh, NC. 27616 PHONE: (919) 825-3566 FAX: 9192275917 EMAIL: reg36@captivefire.com

- SYSTEM REQUIRES A MINIMUM OF 7 FT OF EQUIVALENT PIPE LENGTH BETWEEN TANK AND NEAREST APPLIANCE NOZZLE FOR MOST APPLIANCES. EACH 90 DEGREE ELBOW ADDS 1.5 FT OF EQUIVALENT LENGTH. SEE MANUAL FOR DETAILS.



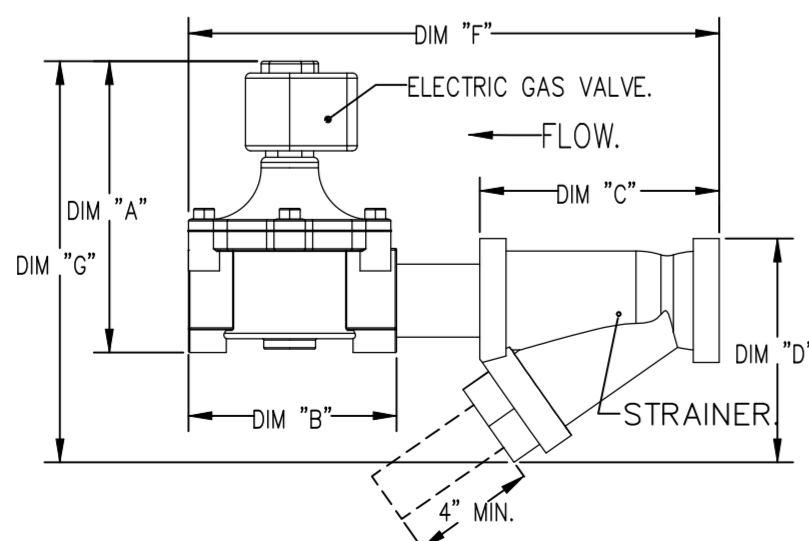
SECTION VIEW - MODEL 4812SND-2-PSP-P  
HOOD - #1

GAS VALVES AND STRAINERS														
TYPE	SIZE	VOLTAGE	GAS VALVE SIZING		GAS VALVE DIMENSIONS						INSTALLATION ORIENTATION	PART NUMBERS		
			MIN. INLET PRESSURE	MAX. INLET PRESSURE	DIM "A"	DIM "B"	DIM "C"	DIM "D"	DIM "E"	DIM "F"		DIM "G"	GAS VALVE PART NUMBER	STRAINER PART NUMBER
ELECTRICAL	2"	120 VAC	0 PSIG (0 IN.W.C.)	5 PSIG (1.38 IN.W.C.)	7-5/8"	8-5/8"	7-1/4"	7-13-16"	15-5/8"	13-15/16"	HORIZONTAL/VERTICAL	8214280	4417688	(SC)E0VA2

ALL GAS VALVES/STRAINERS  
PROPER CLEARANCE MUST BE PROVIDED IN ORDER TO SERVICE THE STRAINERS. A MINIMUM OF 4" CLEARANCE DISTANCE MUST BE PROVIDED AT THE BASE OF THE STRAINER. CUSTOMER MUST VERIFY BTU CONSUMPTION AS WELL AS PRESSURE RATING, SPECIFIC GRAVITY OF NATURAL GAS = 0.64, SPECIFIC GRAVITY OF LP = 1.52.

TO CALCULATE GAS FLOW FOR OTHER THAN 1 IN.W.C. PRESSURE DROP:  
NEW BTU/HR = (BTU/HR AT 1 IN.W.C. PRESSURE DROP) X NEW PRESSURE DROP<sup>0.84</sup>

TO CALCULATE GAS FLOW FOR OTHER THAN 0.64 SPECIFIC GRAVITY:  
NEW BTU/HR = (BTU/HR AT 0.64) X (0.64 / NEW SPECIFIC GRAVITY)<sup>0.84</sup>



NOTES

- FIELD PIPE DROPS AS SHOWN
- PIPING, ELBOWS, TEES, AND NOZZLES SUPPLIED BY CAS.
- FIELD INSTALLED DROP: FACTORY WILL PROVIDE QTY 2' 60IN LONG PIECES OF CHROME PLATED PIPING SHIPPED LOOSE TO BE FIELD-INSTALLED.
- SHIP LOOSE DROP: FACTORY WILL PROVIDE THE EXACT CHROME PIPE LENGTH NEEDED
- SHIPPED LOOSE TO BE FIELD-INSTALLED.
- RELOCATE NOZZLES IF FLOW PATTERN IS BLOCKED BY SHELVING, SALAMANDERS, ETC.
- OVERLAPPING COVERAGE SHALL NOT BE USED ON ANY APPLIANCE WITH AN OBSTRUCTION.
- IF APPLICABLE, EXTENDED PRE-PIPED DROPS ARE SHIPPED LOOSE.
- FACTORY PIPING EXTENDS A MAXIMUM OF 6" ABOVE THE TOP OF THE HOOD.

- APPLIANCE DIMENSIONS LISTED REPRESENT THE COOKING SURFACE SIZE, NOT THE OVERALL APPLIANCE SIZE.
- THIS FIRE SYSTEM COMPLIES WITH UL 300 REQUIREMENTS.

- DL-F NOZZLE PART NUMBER REPLACES 3070-3/8H-10-SS

JOB #: 6130024  
JOB NAME: CORNER GRILL - ANGIER.

SYSTEM SIZE: TANK-SP-2-WC TOTAL FP REQUIRED: 28.

HOOD # 1: 10' 0.00" LONG x 48" WIDE x 12" HIGH.

RISER # 1: SIZE: 10" x 14".

HOOD # 1 METAL BLOW-OFF CAPS INCLUDED.

- HEAVY-DUTY APPLIANCES (RATED 600°F) WILL REQUIRE AN ADDITIONAL DOWNSTREAM FIRESTAT IN THE EVENT THAT THE DUCTWORK CONTAINS ANY HORIZONTAL RUNS OVER 25 FT IN LENGTH.

- MEDIUM TO LIGHT-DUTY APPLIANCES (RATED 450°F) WILL NOT REQUIRE ANY ADDITIONAL DOWNSTREAM DETECTION.

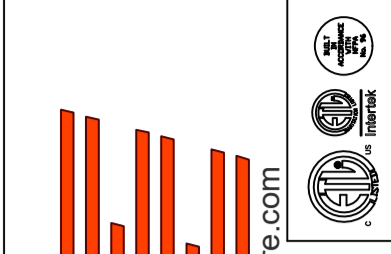
LEGEND - FIRE CABINET TANK SYSTEM

- 4 GALLON TANK.
- PRIMARY ACTUATOR RELEASE.
- SECONDARY ACTUATOR RELEASE.
- PRESSURE SUPERVISION SWITCH.
- PRIMARY HOSE ASSEMBLY.
- SECONDARY HOSE ASSEMBLY.
- REMOTE MANUAL ACTUATION DEVICE.

INCLUDES: FIELD INSTALLATION AND HOOKUP DURING NORMAL BUSINESS HOURS BY CERTIFIED INSTALLERS ONLY IN THE LOCATION NOTED ABOVE. TWO SITE VISITS ONLY (ONE VISIT TO SET PULL STATION & SYSTEM HOOKUP AND ONE VISIT FOR ONE TEST). ADDITIONAL VISITS WILL RESULT IN ADDITIONAL CHARGES. ONE MECHANICAL OR ELECTRICAL GAS VALVE PER SYSTEM AT A MAXIMUM SIZE OF 2". PERMIT AND SYSTEM TEST.  
EXCLUDES: UNION LABOR & PREVAILING WAGE (LABOR & WAGES WILL BE ADDED IF APPLICABLE). GAS VALVE INSTALLATION, ELECTRICAL HOOKUP AND CONNECTIONS, HANGING OF FIRE CABINET, SHUNT TRIP, HANDHELD EXTINGUISHER(S), ON-SITE RE-PIPING DUE TO EQUIPMENT LAYOUT CHANGES.

REVISIONS

DESCRIPTION	DATE



Corner Grill - Angier  
ANGIER, NC, 27501

DATE: 7/26/2023

DWG.#:  
6130024

DRAWN BY: REG 36

SCALE:  
1/2" = 1'-0"

MASTER DRAWING

SHEET NO.  
4

www.captivefire.com  
Eastern North Carolina  
4641 Paragon Park Rd., Raleigh, NC, 27616 PHONE: (919) 825-3566 FAX: 9192275917 EMAIL: reg36@captivefire.com

**EXHAUST FAN INFORMATION – JOB#6130024**

FAN UNIT NO	TAG	QTY	FAN UNIT MODEL #	MANUFACTURER	CFM	ESP	RPM	MOTOR ENCL	HP	BHP	PHASE	VOLT	FLA	DISCHARGE VELOCITY	WEIGHT (LBS)	SDNES
1		1	DUBSHFA	CAPTIVEAIRE	2000	1.200	1474	TEAD-ECM	0.750	0.6280	1	115	8.9	633 FPM	89	14.1

**MUA FAN INFORMATION – JOB#6130024**

FAN UNIT NO	TAG	QTY	FAN UNIT MODEL #	BLOWER	HOUSING	MIN CFM	DESIGN CFM	ESP	RPM	MOTOR ENCL	HP	BHP	PHASE	VOLT	FLA	MCA	MCCP	WEIGHT (LBS)	SDNES
2		1	A1-G10	G10D	A1	-	1600	0.500	885	TEAD-ECM	1.000	0.5220	1	115	11.6	14.5A	25A	233	18.2

**FAN OPTIONS**

FAN UNIT NO	TAG	QTY	DESCRIPTION
1		1	GREASE BDX
		1	ECM WIRING PACKAGE – MANUAL OR 0-10VDC REFERENCE SPEED CONTROL –RTC– (TELCD MOTOR), CCW ROTATION
		1	2 YEAR PARTS WARRANTY
2		1	SIZE 1 UNTEMPERED COMMERCIAL DOWN DISCHARGE FOR BELT DRIVE AHUS
		1	GRAVITY BACKDRAFT DAMPER FOR SIZE 1 HOUSING
		1	ECM WIRING PACKAGE-SUPPLY – MANUAL OR 0-10VDC REFERENCE SPEED CONTROL (TELCD MOTOR), CW ROTATION
	1	2 YEAR PARTS WARRANTY	

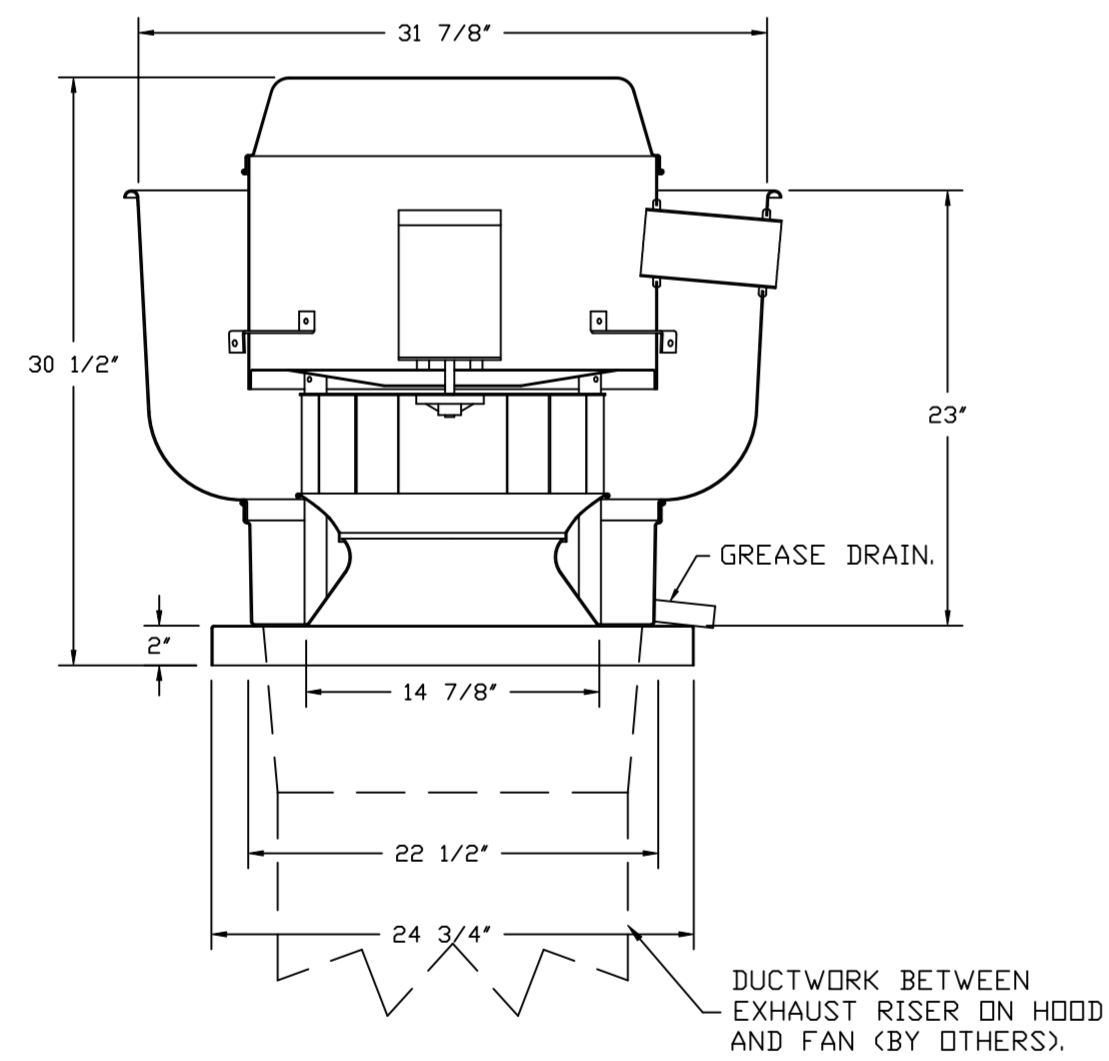
**FAN ACCESSORIES**

FAN UNIT NO	TAG	EXHAUST				SUPPLY		
		GREASE CUP	GRAVITY DAMPER	WALL MOUNT	SIDE DISCHARGE	GRAVITY DAMPER	MOTORIZED DAMPER	WALL MOUNT
1		YES						
2						YES		

**CURB ASSEMBLIES**

NO	ON FAN	WEIGHT	ITEM	SIZE
1	# 1	36 LBS	CURB	23.000"W X 23.000"L X 20.000"H VENTED HINGED.
2	# 2	29 LBS	CURB	21.000"W X 21.000"L X 15.000"H.

FAN #1 DUBSHFA – EXHAUST FAN



**FEATURES:**

- DIRECT DRIVE CONSTRUCTION (NO BELTS/PULLEYS).
- ROOF MOUNTED FANS.
- RESTAURANT MODEL.
- UL705 AND UL762 AND ULC-S645
- VARIABLE SPEED CONTROL.
- INTERNAL WIRING.
- THERMAL OVERLOAD PROTECTION (SINGLE PHASE).
- HIGH HEAT OPERATION 300°F (149°C).
- GREASE CLASSIFICATION TESTING.
- NEMA 3R SAFETY DISCONNECT SWITCH.

**NORMAL TEMPERATURE TEST**

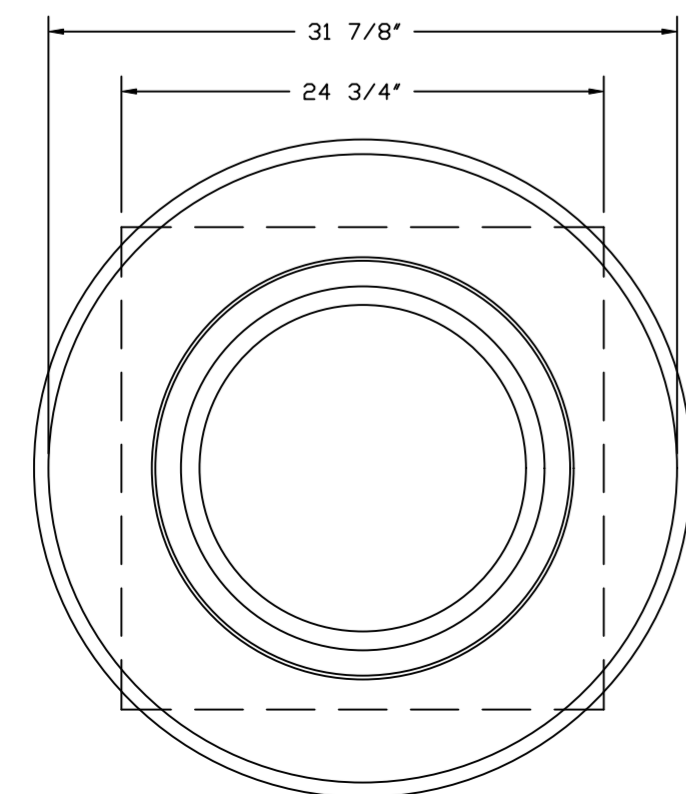
EXHAUST FAN MUST OPERATE CONTINUOUSLY WHILE EXHAUSTING AIR AT 300°F (149°C) UNTIL ALL FAN PARTS HAVE REACHED THERMAL EQUILIBRIUM, AND WITHOUT ANY DETERIORATING EFFECTS TO THE FAN WHICH WOULD CAUSE UNSAFE OPERATION.

**ABNORMAL FLARE-UP TEST**

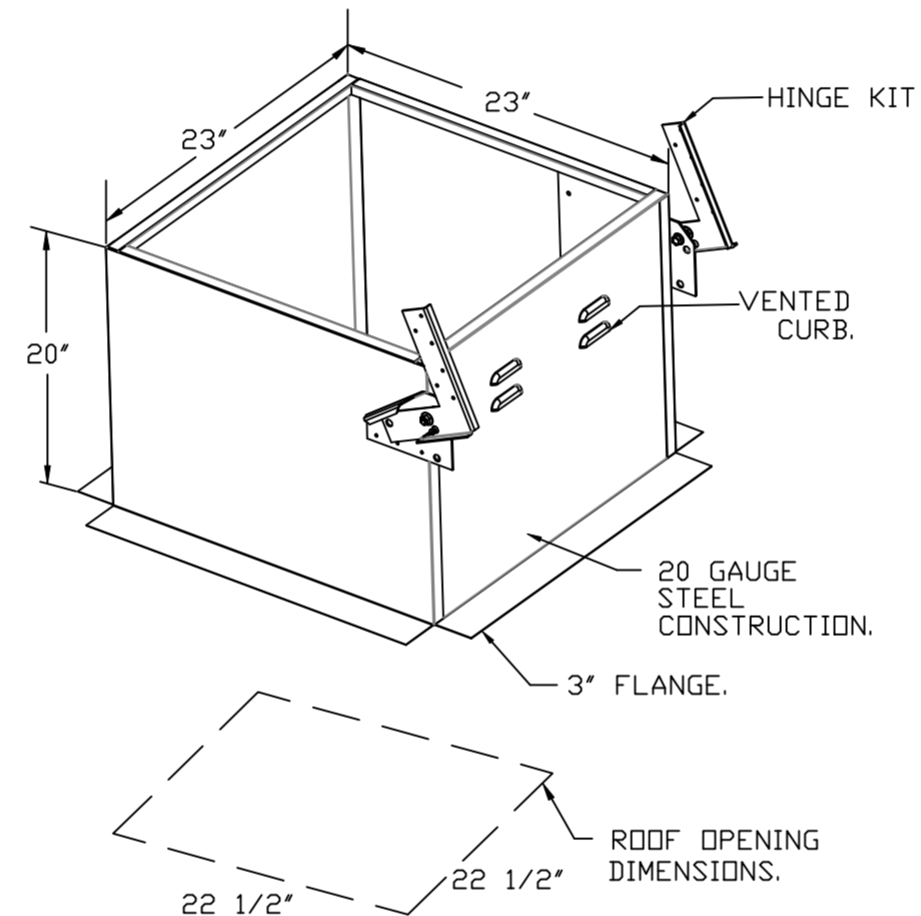
EXHAUST FAN MUST OPERATE CONTINUOUSLY WHILE EXHAUSTING BURNING GREASE VAPORS AT 600°F (316°C) FOR A PERIOD OF 15 MINUTES WITHOUT THE FAN BECOMING DAMAGED TO ANY EXTENT THAT COULD CAUSE AN UNSAFE CONDITION.

**OPTIONS**

- GREASE BDX.
- ECM WIRING PACKAGE – MANUAL OR 0-10VDC REFERENCE SPEED CONTROL –RTC– (TELCD MOTOR), CCW ROTATION.
- 2 YEAR PARTS WARRANTY.



TOP VIEW



**REVISIONS**

DESCRIPTION	DATE

www.captiveair.com  
Eastern North Carolina  
4641 Paragon Park Rd., Raleigh, NC. 27616 PHONE: (919) 825-3566 FAX: 9192275917 EMAIL: reg36@captiveair.com

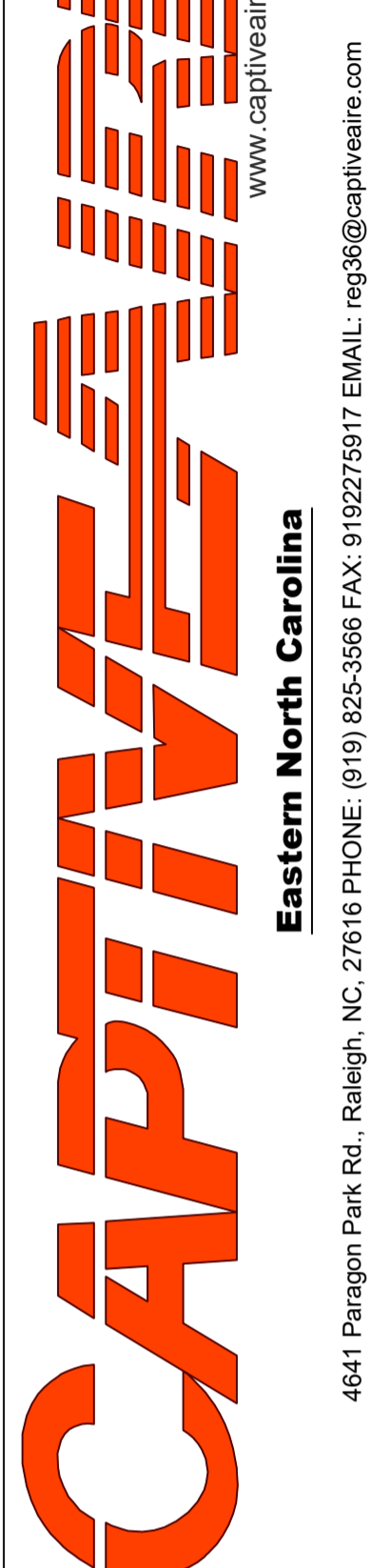
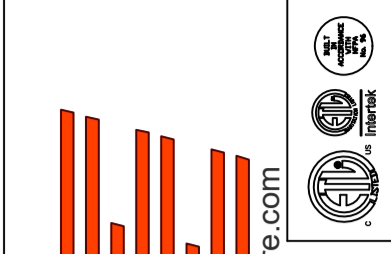
Corner Grill – Angier  
ANGIER, NC, 27501

DATE: 7/26/2023  
DWG.#: 6130024  
DRAWN BY: REG 36  
SCALE: 3/4" = 1'-0"  
MASTER DRAWING

SHEET NO.  
5

**REVISIONS**

DESCRIPTION	DATE:



Corner Grill - Angier  
 ANGIER, NC, 27501

DATE: 7/26/2023  
 DWG.#: 6130024  
 DRAWN BY: REG 36  
 SCALE: 3/4" = 1'-0"  
 MASTER DRAWING

SHEET NO.  
 6

8 GREASE DUCT & CHIMNEY SPECIFICATIONS:  
 PROVIDE GREASE DUCT EQUAL TO CAPTIVEAIRE SYSTEMS MODEL "DW"  
 ROUND 20 GAUGE 430 STAINLESS STEEL DUCTWORK. MODEL "DW"  
 IS LISTED TO UL-1978 AND IS INSTALLED USING "V" CLAMP LOCKING  
 CONNECTIONS SEALED WITH 3M FIRE BARRIER 2000 PLUS. MODEL "DW"  
 DOES NOT REQUIRE WELDING PROVIDING IT HAS BEEN INSTALLED PER  
 THE MANUFACTURES INSTALLATION GUIDE.  
 PROVIDE RATED ACCESS DOORS AT EVERY CHANGE IN DIRECTION AND EVERY 12' ON CENTER.  
 PER MANUFACTURES LISTING MODEL "DW" HORIZONTAL RUNS LESS THAN 75 FT. CAN BE  
 SLOPED 1/16" PER 12", HORIZONTAL RUNS MORE THAN 75 FT. CAN BE SLOPED 3/16" PER 12".  
 DUCT SHOULD BE SLOPED AS MUCH AS POSSIBLE TO REDUCE THE CHANCE OF GREASE  
 ACCUMULATION IN HORIZONTAL RUNS.

IF THE DUCT OR CHIMNEY IS WITHIN 18 INCHES OF COMBUSTIBLE MATERIAL, PROVIDE  
 UL-2221 OR UL-103 HT LISTED DOUBLE WALL GREASE DUCT OR DOUBLE WALL CHIMNEY  
 EQUAL TO CAPTIVEAIRE SYSTEMS MODEL "DW- 2R, 2R TYPE HT, 3R, OR 3Z" ROUND 20 GAUGE  
 430 STAINLESS INNER DUCT INSULATED WITH A 24 GAUGE 430 STAINLESS OUTER SHELL.

**CUSTOMER APPROVAL TO MANUFACTURE:**

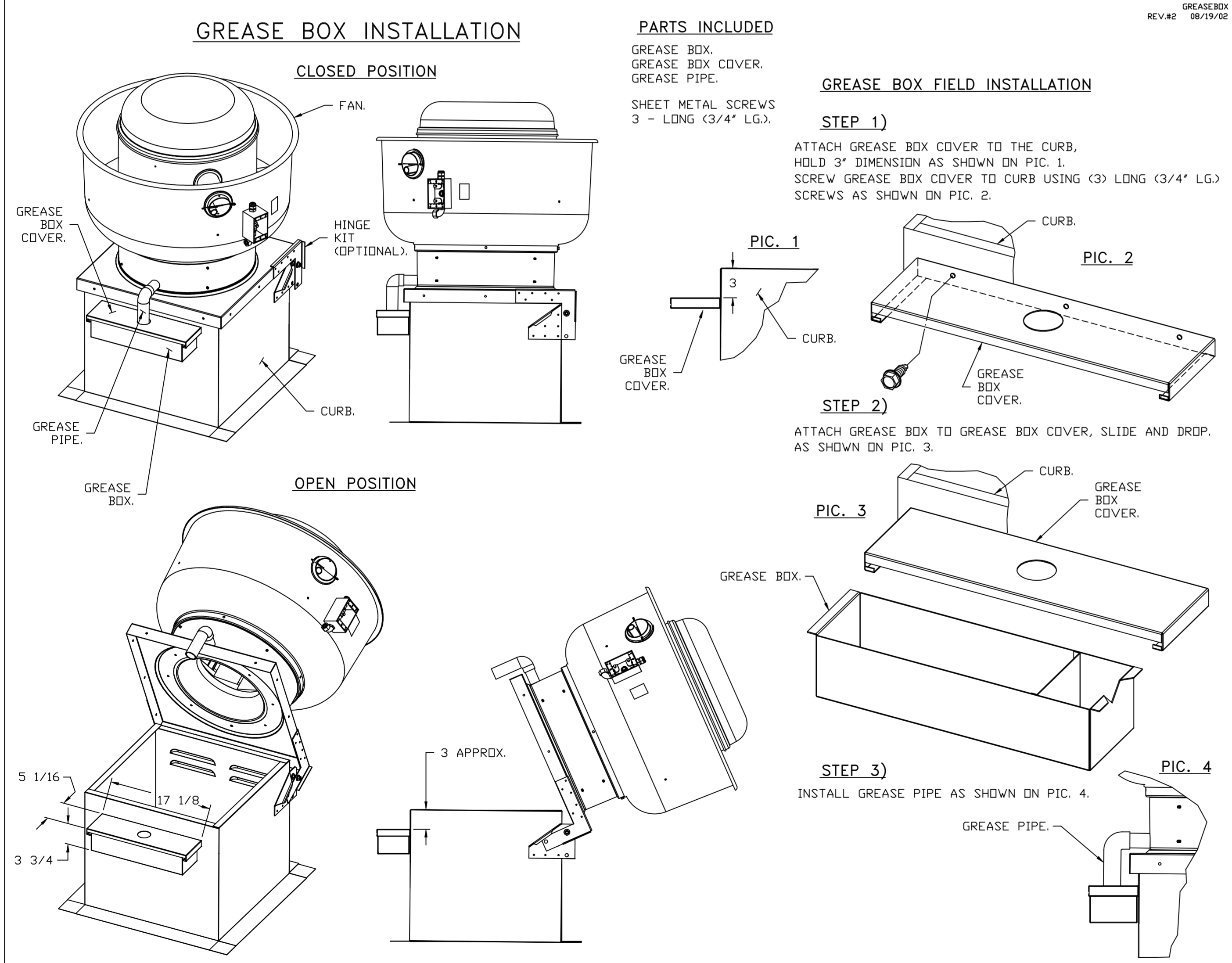
APPROVED AS NOTED

APPROVED WITH NO EXCEPTION TAKEN

REVISE AND RESUBMIT

SIGNATURE \_\_\_\_\_

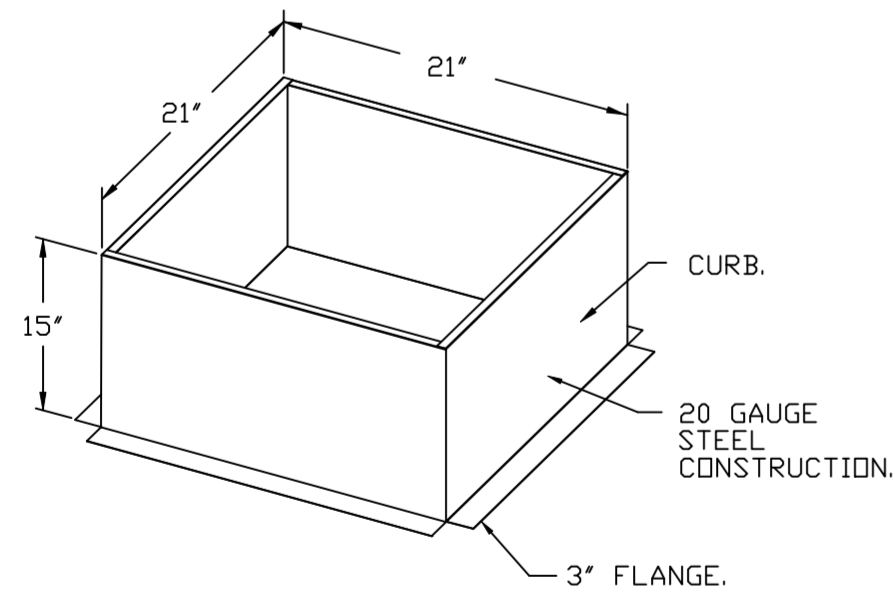
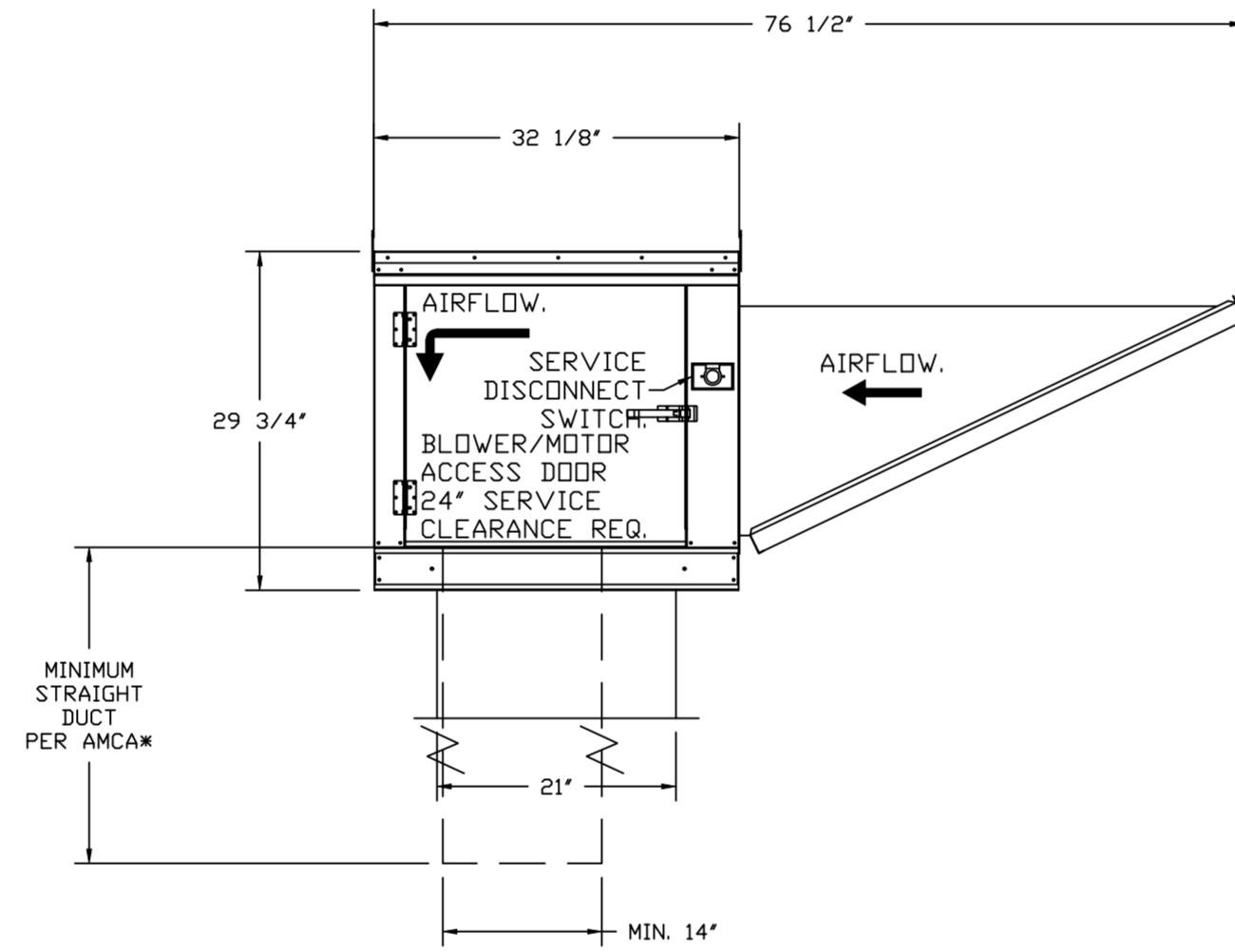
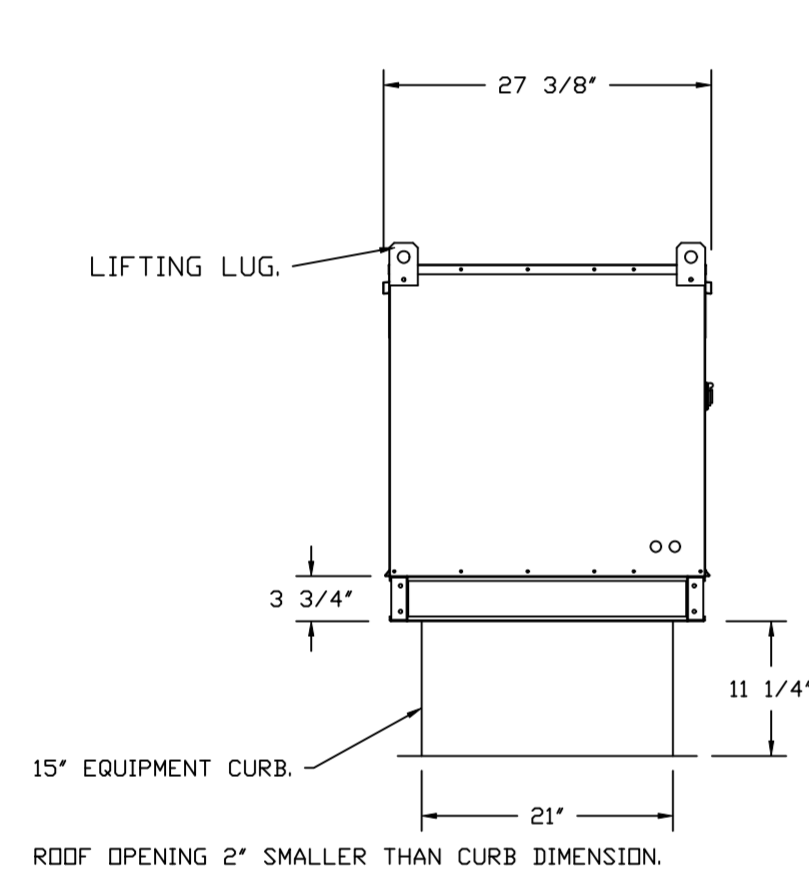
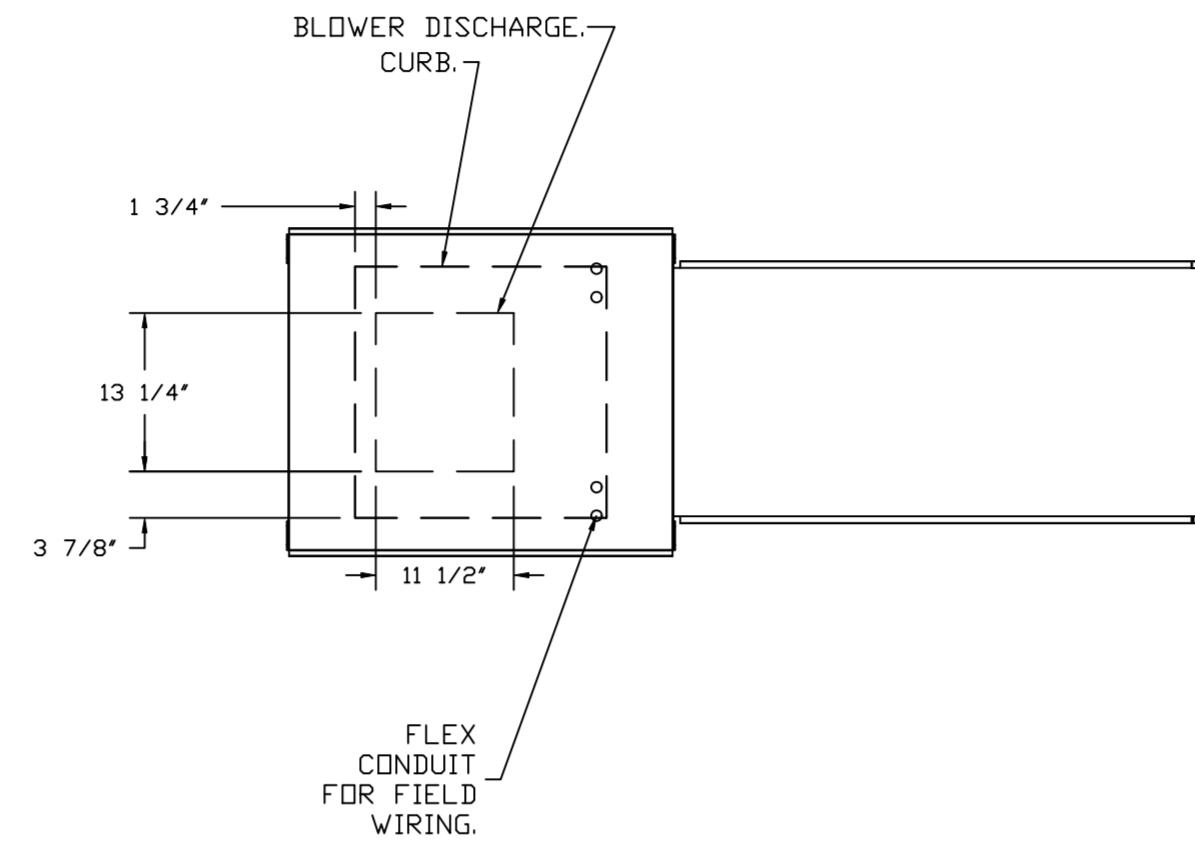
YOUR TITLE \_\_\_\_\_ DATE \_\_\_\_\_



\*NOTE: UL 705 INSTALL.

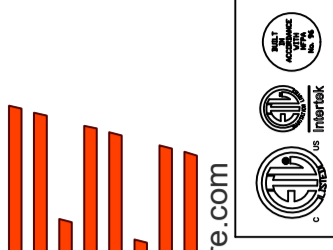
- FAN #2 AI-G10D - SUPPLY FAN
1. DIRECT DRIVE UNTEMPERED SUPPLY UNIT WITH 10" BLOWER IN SIZE #1 HOUSING WITH SPEED CONTROL, DISCONNECT SWITCH.
  2. INTAKE HOOD WITH EZ FILTERS.
  3. DOWN DISCHARGE - AIR FLOW RIGHT -> LEFT.
  4. DOWN DISCHARGE CONSTRUCTION FOR SIZE 1 UNTEMPERED BELT DRIVE AHUS.
  5. GRAVITY BACK DRAFT DAMPER, 16" WIDE X 18" HIGH, STANDARD GALVANIZED CONSTRUCTION, 1 1/4" REAR FLANGE, FOR SIZE 1 UNTEMPERED FAN HOUSING (S1B).
  6. ECM WIRING PACKAGE AND MANUAL OR 0-10VDC CONTROL FOR SUPPLY EC MOTORS. RTC CONTROLLER. \*\*DO NOT ORDER UNDER WARRANTY, SEE PART NUMBER "ECM-VCU-RTC\*\*.
  7. HINGED DOUBLE WALL INSULATED DOOR ASSEMBLY (BURNER/BLOWER SECTION).
  8. 2 YEAR PARTS WARRANTY

NOTE: SUPPLY DUCT MUST BE INSTALLED TO MEET SMACNA STANDARDS. A MINIMUM STRAIGHT DUCT LENGTH MUST BE MAINTAINED DOWNSTREAM OF UNIT DISCHARGE AS OUTLINED IN AMCA PUBLICATION 201. WHEN USING RECTANGULAR DUCTWORK, ELBOWS MUST BE RADIUS THROAT, RADIUS BACK WITH TURNING VANES. FLEXIBLE DUCTWORK AND SQUARE THROAT/SQUARE BACK ELBOWS SHOULD NOT BE USED. ANY TRANSITION AND/OR TURNS IN THE DUCTWORK WILL CAUSE SYSTEM EFFECT. SYSTEM EFFECT WILL DRASTICALLY INCREASE STATIC PRESSURE AND REDUCE AIRFLOW. DO NOT RELY ON UNIT TO SUPPORT DUCT IN ANY WAY. FAILURE TO PROPERLY SIZE DUCTWORK MAY CAUSE SYSTEM EFFECTS AND REDUCE PERFORMANCE OF THE EQUIPMENT. SUGGESTED STRAIGHT DUCT SIZE IS 14" X 14".



**REVISIONS**

DESCRIPTION	DATE



**CAPTIVE AIR**  
 Eastern North Carolina  
 4641 Paragon Park Rd., Raleigh, NC, 27616 PHONE: (919) 825-3566 FAX: 9192275917 EMAIL: reg36@captiveair.com

Corner Grill - Angier  
 ANGIER, NC, 27501

DATE: 7/26/2023

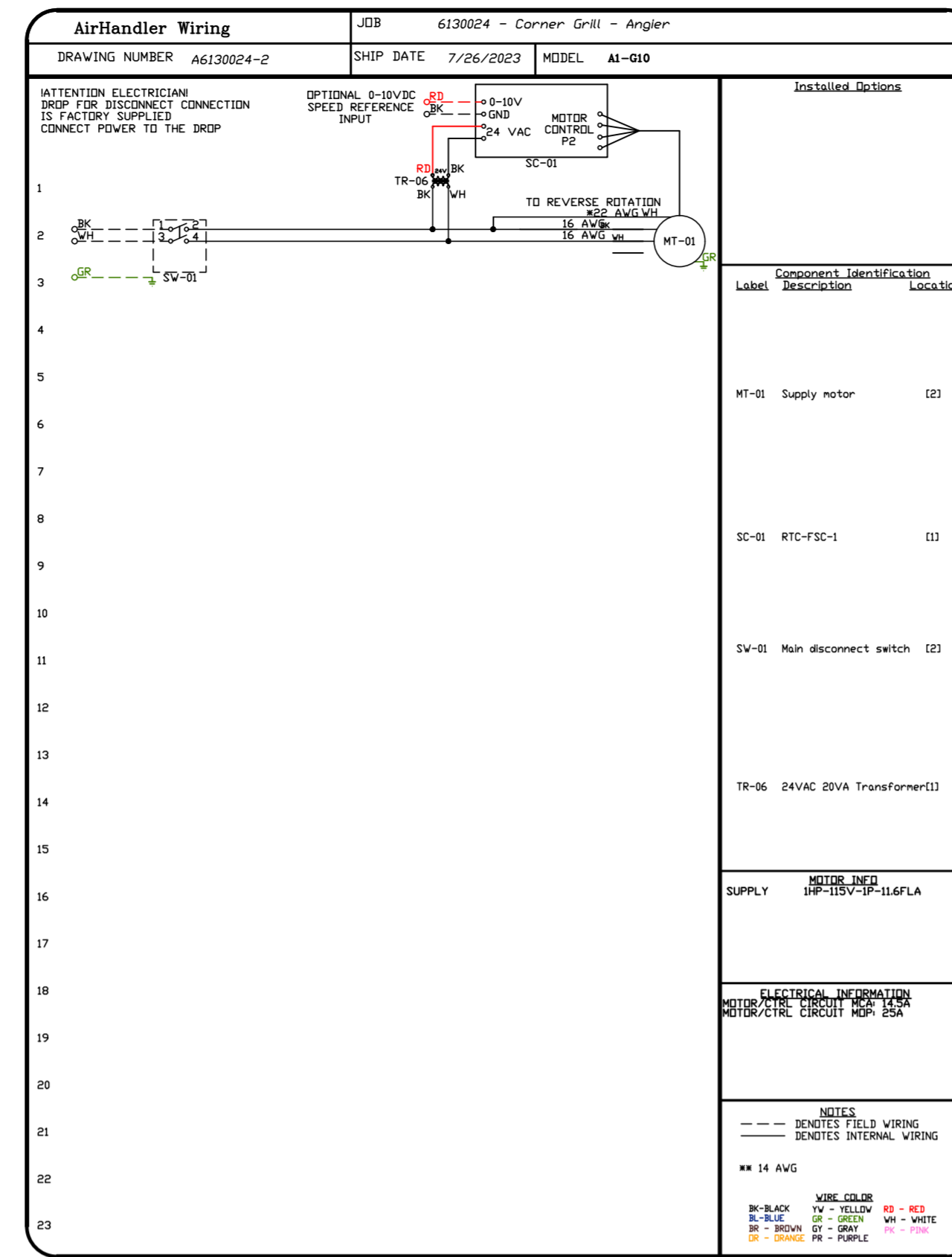
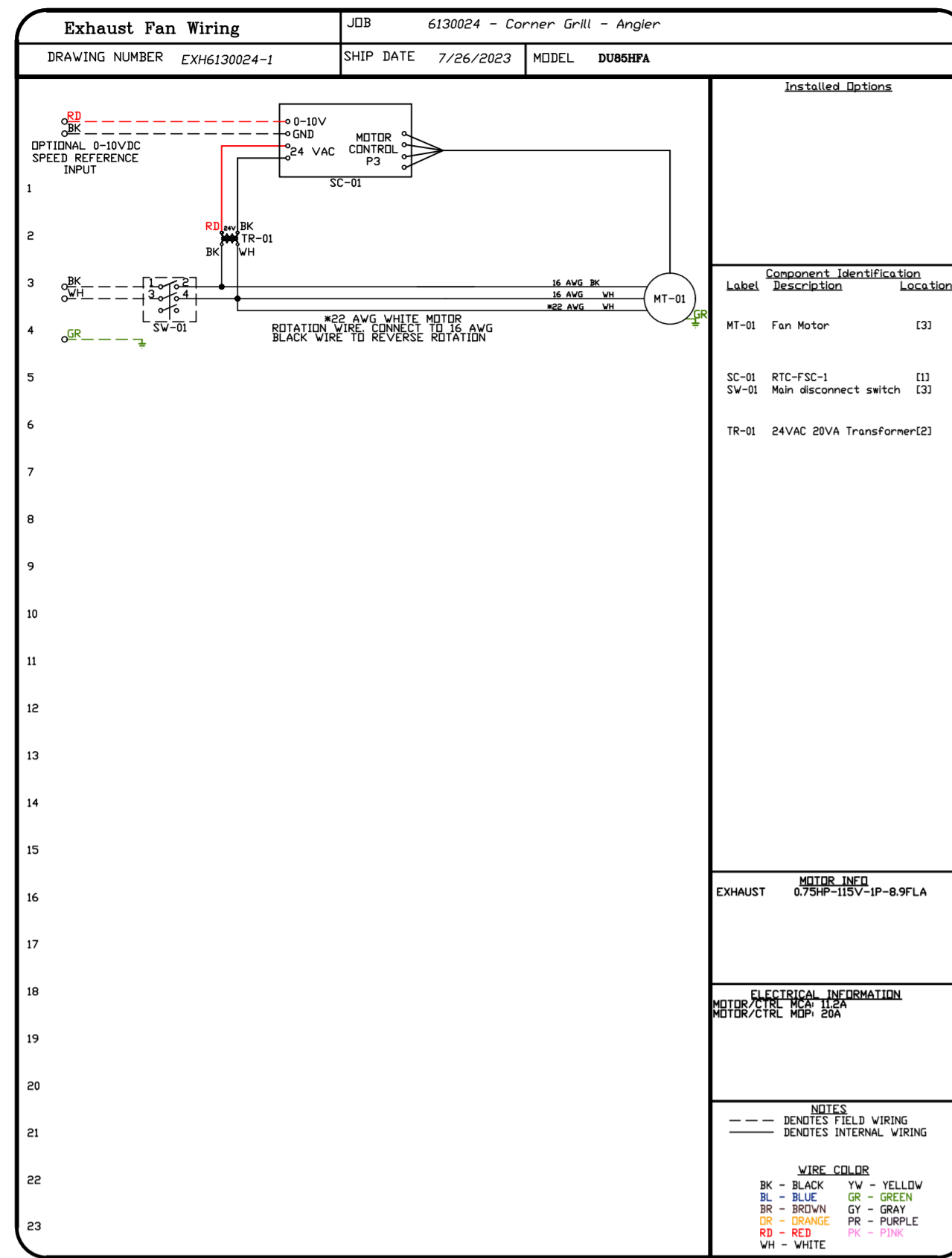
DWG.#:  
6130024

DRAWN BY: REG 36

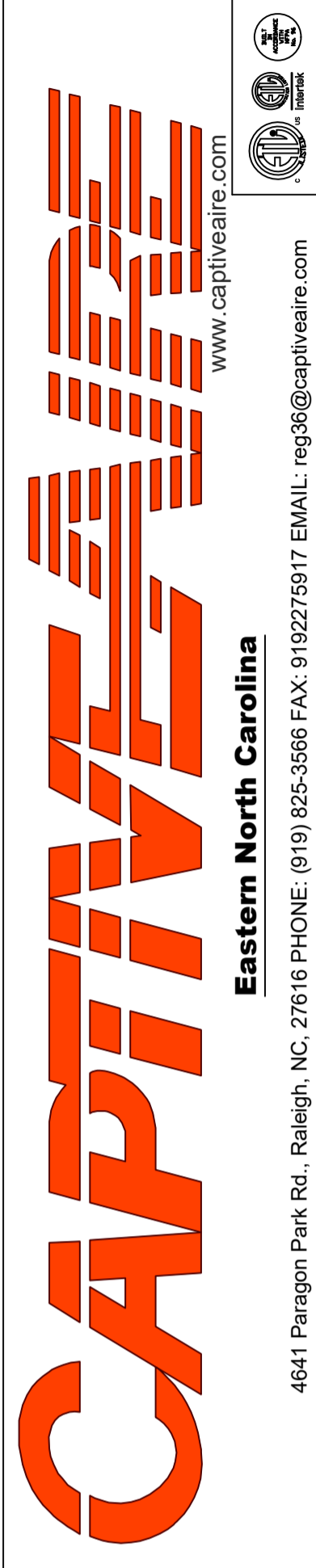
SCALE:  
3/4" = 1'-0"

MASTER DRAWING

SHEET NO.  
7



REVISIONS	
DESCRIPTION	DATE:



Corner Grill - Angier  
ANGIER, NC, 27501

DATE: 7/26/2023  
DWG.#: 6130024  
DRAWN BY: REG 36  
SCALE: 3/4" = 1'-0"  
MASTER DRAWING

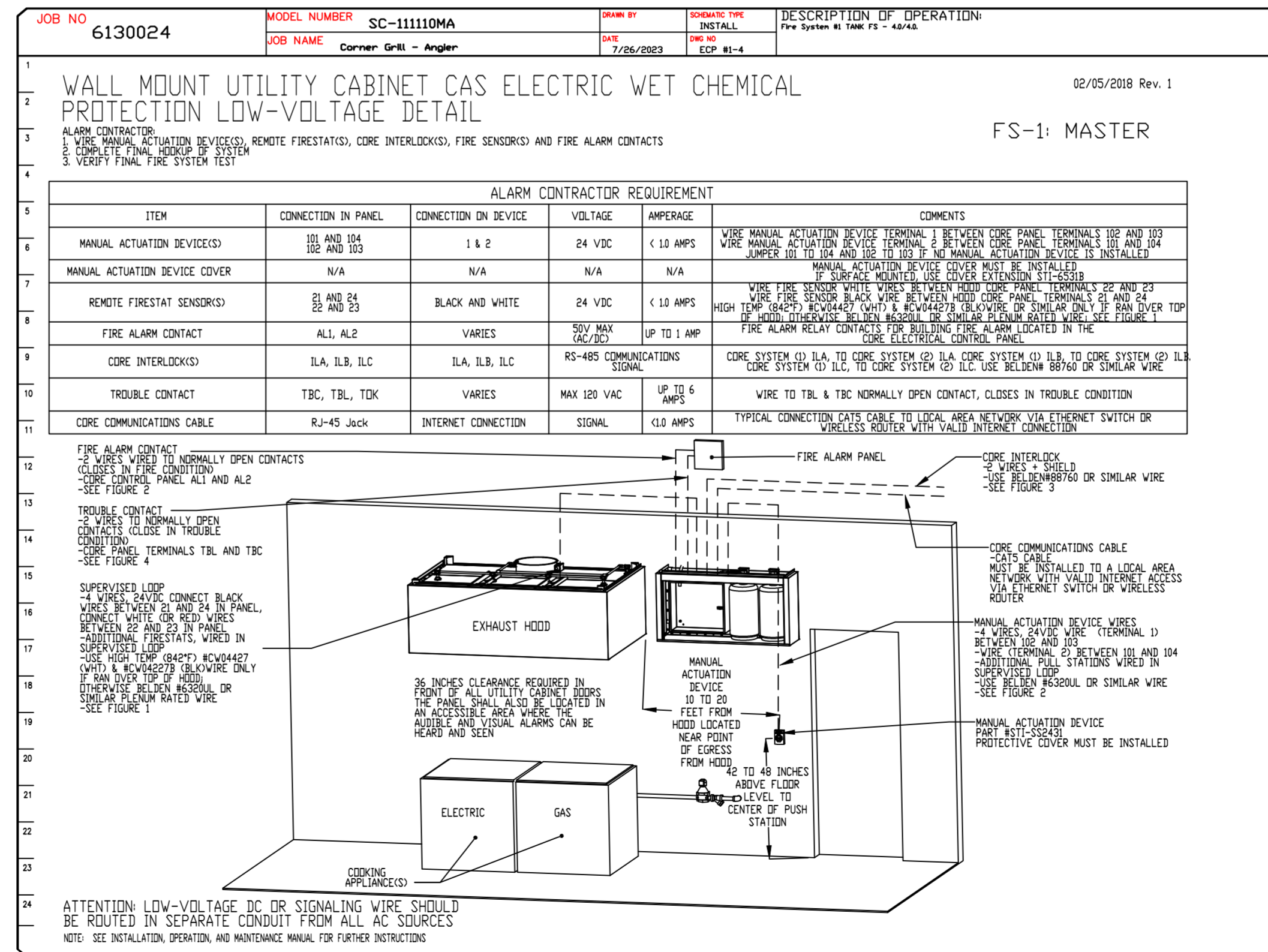
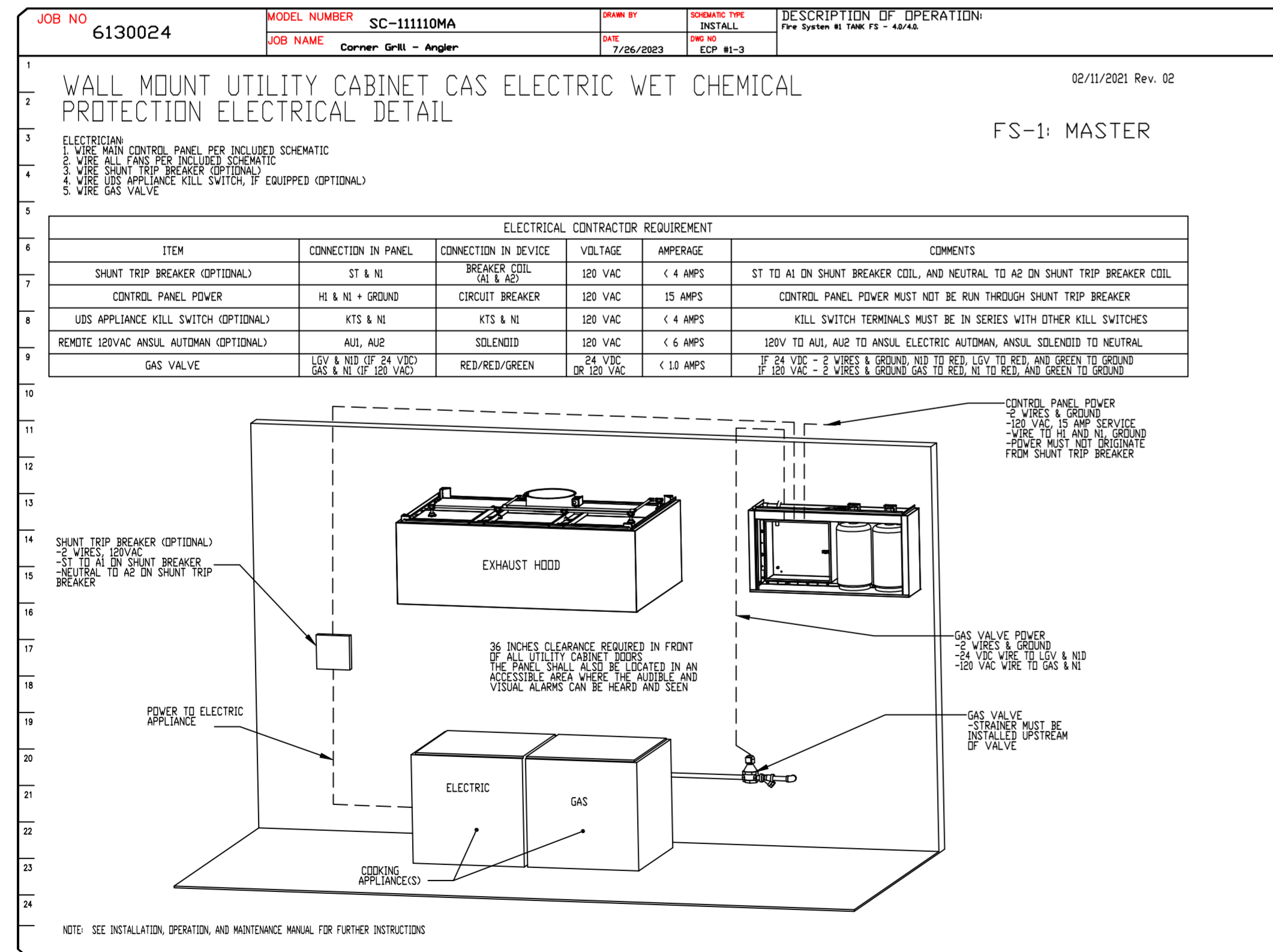
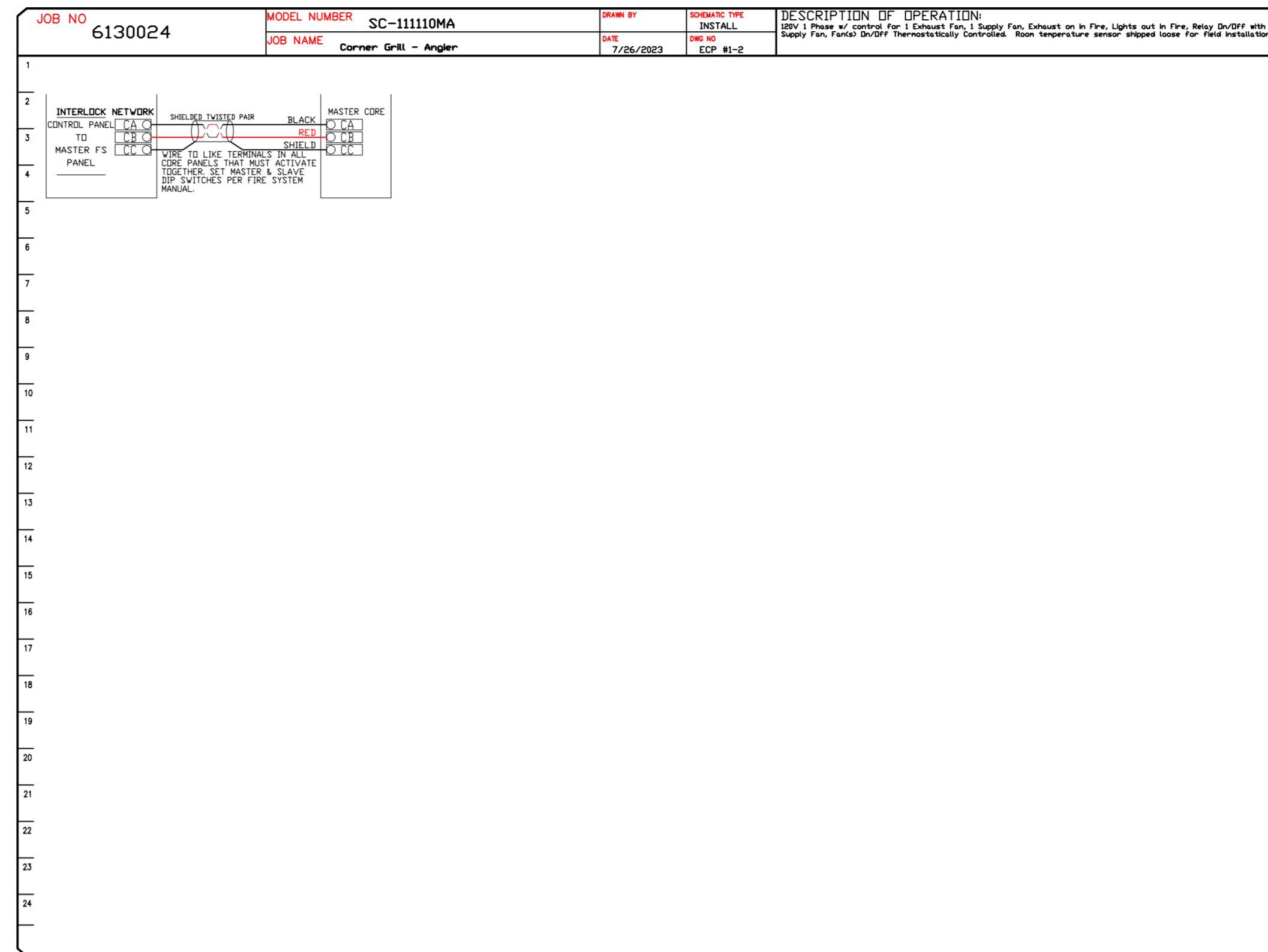
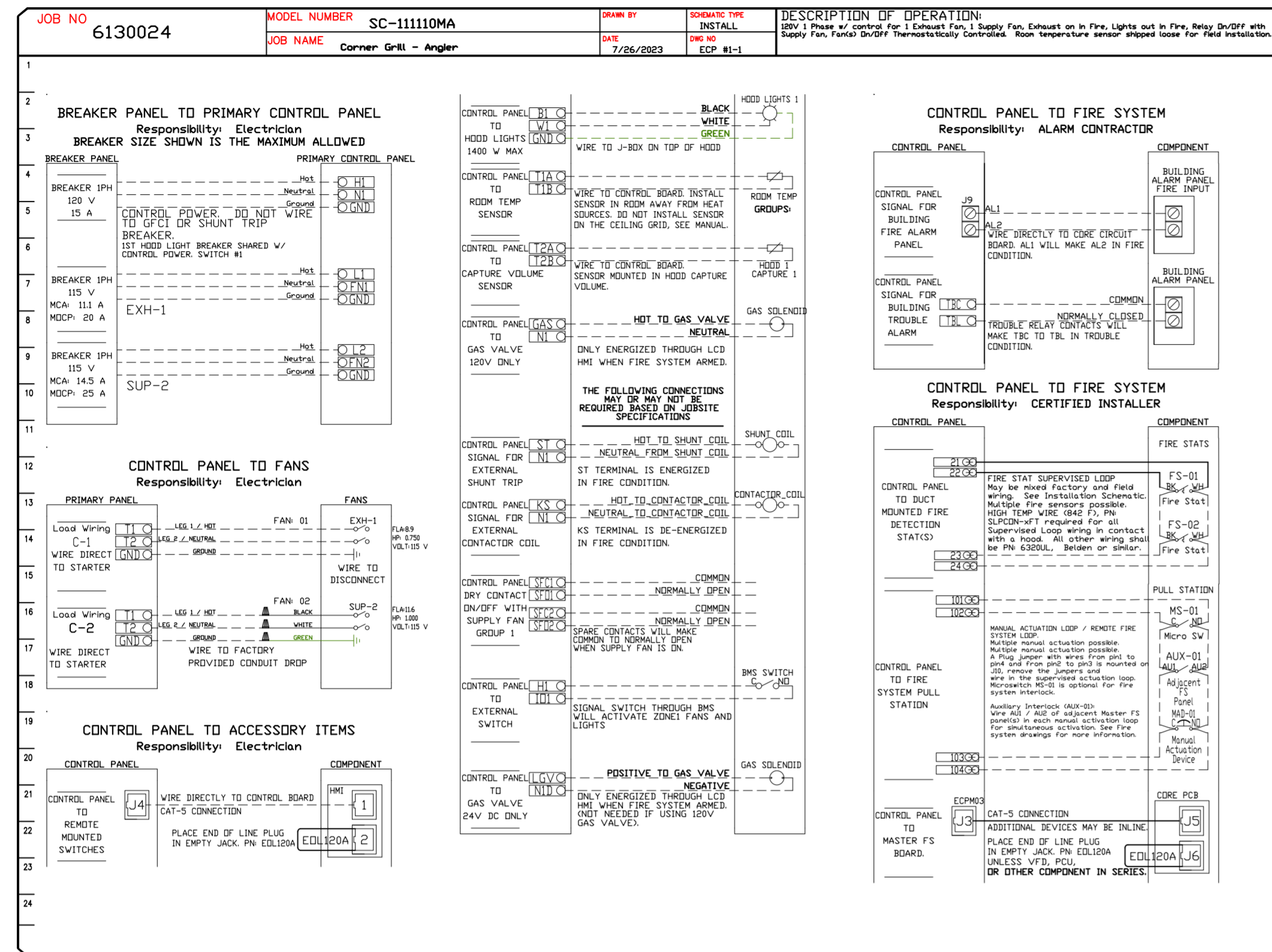
SHEET NO.  
8

4641 Paragon Park Rd., Raleigh, NC, 27616 PHONE: (919) 825-3566 FAX: 9192275917 EMAIL: reg36@captiveaire.com



**ELECTRICAL PACKAGE - JOB#6130024**

NO	TAG	PACKAGE #	LOCATION	SWITCHES		OPTION	FANS CONTROLLED				
				LOCATION	QUANTITY		TYPE	#	HP	V/DLT	FLA
1		SC-111101MA	WALL UTILITY CABINET LEFT	FACE MOUNT LEFT SIDE OF HOOD	1 LIGHT 1 FAN	SMART CONTROLS THERMOSTATIC CONTROL V/ RELAY ON/OFF WITH SUPPLY	EXHAUST	1	0.750	115	8.9
				HOOD # 1			SUPPLY	1	1.000	115	11.6



**REVISIONS**

NO.	DESCRIPTION	DATE

**CAPTIVE**

www.captive.com

Eastern North Carolina

4641 Paragon Park Rd., Raleigh, NC, 27616 PHONE: (919) 825-3566 FAX: 9192275917 EMAIL: reg36@captive.com

Corner Grill - Angier  
ANGIER, NC, 27501

**DATE:** 7/26/2023

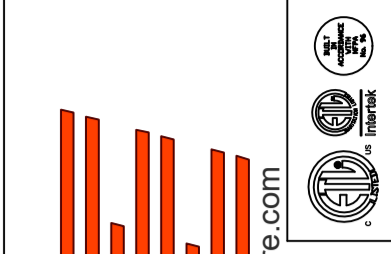
**DWG.#:** 6130024

**DRAWN BY:** REG 36

**SCALE:** 3/4" = 1'-0"

**MASTER DRAWING**

**SHEET NO.** 9



Corner Grill - Angier  
ANGIER, NC, 27501

DATE: 7/26/2023

DWG.#:  
6130024

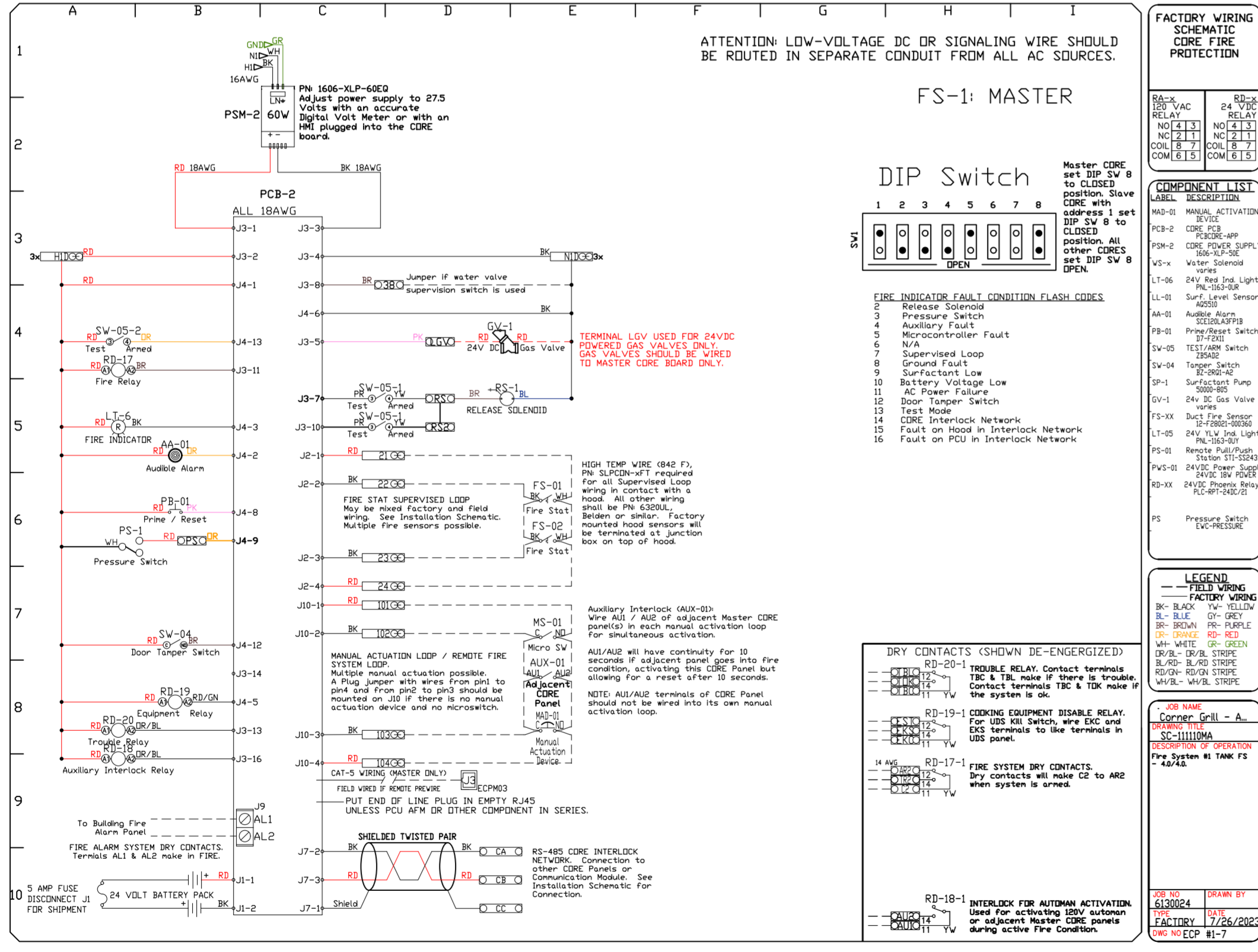
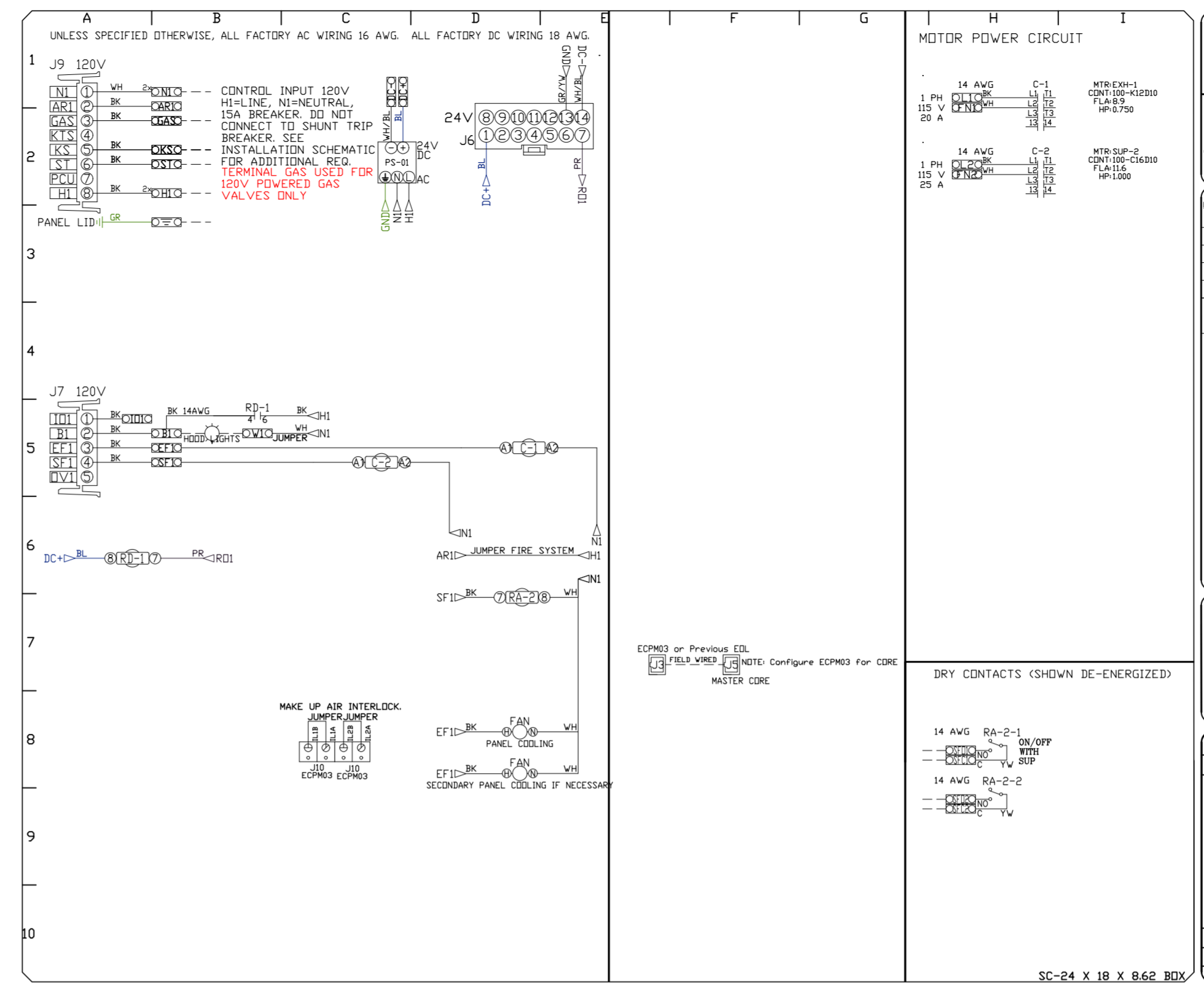
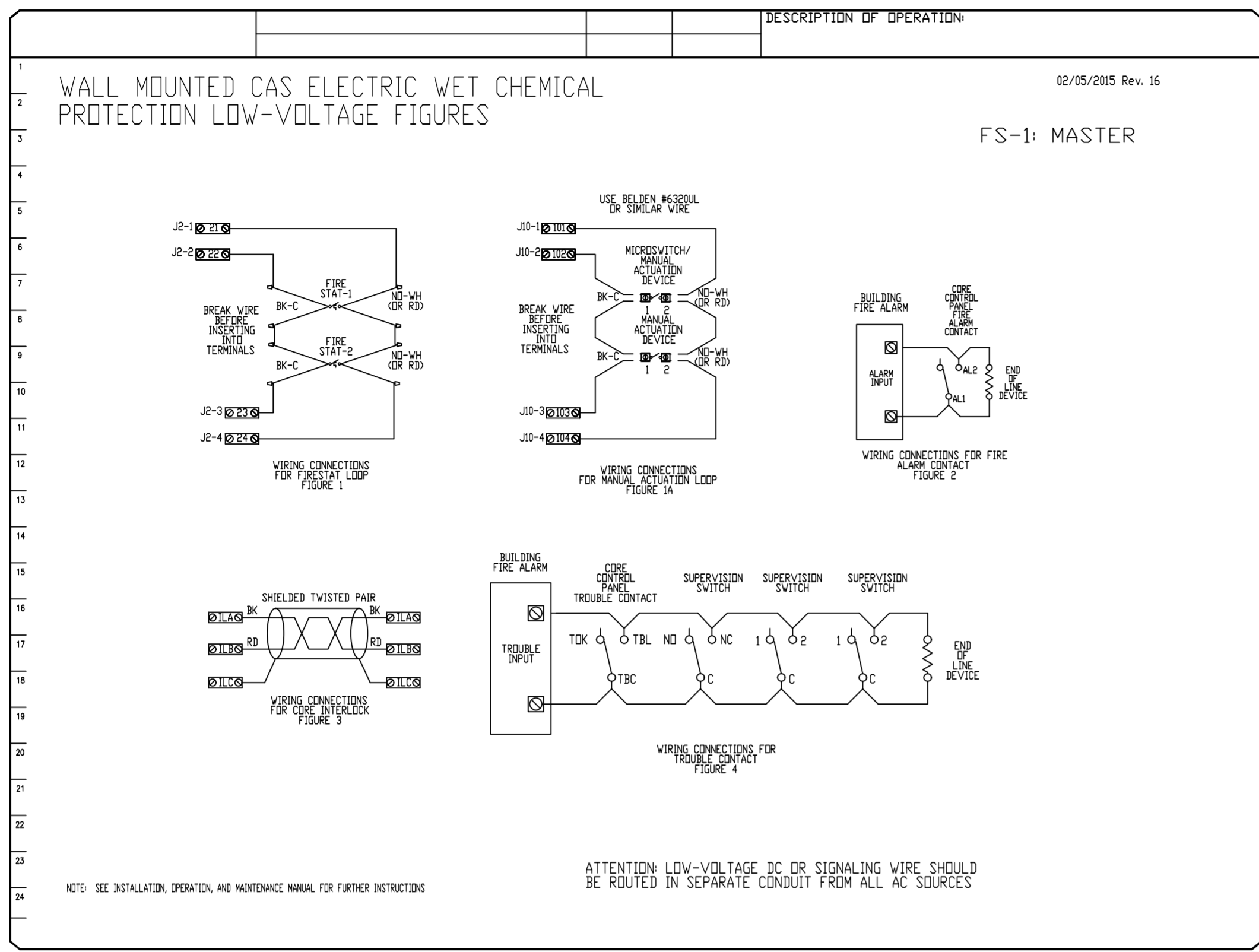
DRAWN BY: REG 36

SCALE:  
3/4" = 1'-0"

MASTER DRAWING

SHEET NO.  
10

www.captiveair.com  
Eastern North Carolina  
4641 Paragon Park Rd., Raleigh, NC, 27616 PHONE: (919) 825-3566 FAX: 9192275917 EMAIL: reg36@captiveair.com



www.captiveair.com

SYSTEM DESIGN VERIFICATION (SDV)

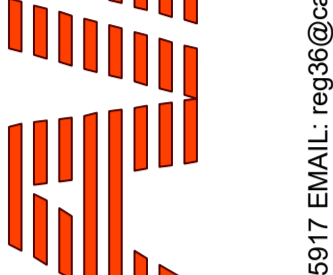
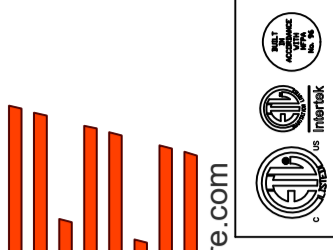
IF ORDERED, CAS SERVICE WILL PERFORM A SYSTEM DESIGN VERIFICATION (SDV) ONCE ALL EQUIPMENT HAS HAD A COMPLETE START UP PER THE OPERATION AND INSTALLATION MANUAL. TYPICALLY, THE SDV WILL BE PERFORMED AFTER ALL INSPECTIONS ARE COMPLETE.

ANY FIELD RELATED DISCREPANCIES THAT ARE DISCOVERED DURING THE SDV WILL BE BROUGHT TO THE ATTENTION OF THE GENERAL CONTRACTOR AND CORRESPONDING TRADES ON SITE. THESE ISSUES WILL BE DOCUMENTED AND FORWARDED TO THE APPROPRIATE SALES OFFICE. IF CAS SERVICE HAS TO RESOLVE A DISCREPANCY THAT IS A FIELD ISSUE, THE GENERAL CONTRACTOR WILL BE NOTIFIED AND BILLED FOR THE WORK. SHOULD A RETURN TRIP BE REQUIRED DUE TO ANY FIELD RELATED DISCREPANCY THAT CANNOT BE RESOLVED DURING THE SDV, THERE WILL BE ADDITIONAL TRIP CHARGES.

DURING THE SDV, CAS SERVICE WILL ADDRESS ANY DISCREPANCY THAT IS THE FAULT OF THE MANUFACTURER. SHOULD A RETURN TRIP BE REQUIRED, THE GENERAL CONTRACTOR AND APPROPRIATE SALES OFFICE WILL BE NOTIFIED. THERE WILL BE NO ADDITIONAL CHARGES FOR MANUFACTURER DISCREPANCIES.

REVISIONS

DESCRIPTION	DATE
Δ	
Δ	
Δ	
Δ	



**Eastern North Carolina**

4641 Paragon Park Rd., Raleigh, NC, 27616 PHONE: (919) 825-3566 FAX: 9192275917 EMAIL: reg36@captivaeire.com

Corner Grill - Angier  
ANGIER, NC, 27501

DATE: 7/26/2023

DWG.#:  
6130024

DRAWN BY: REG 36

SCALE:  
3/4" = 1'-0"

MASTER DRAWING

SHEET NO.  
11