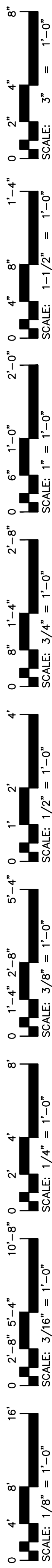
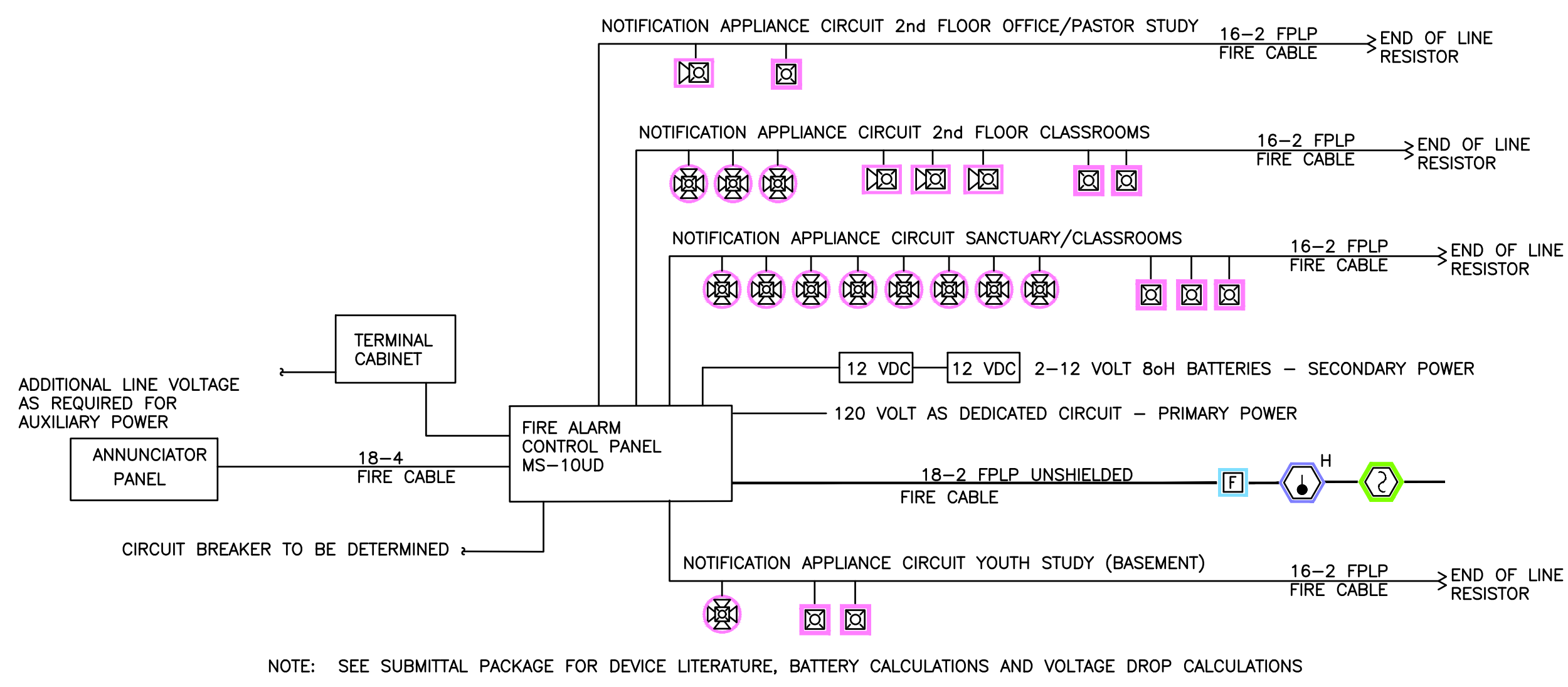
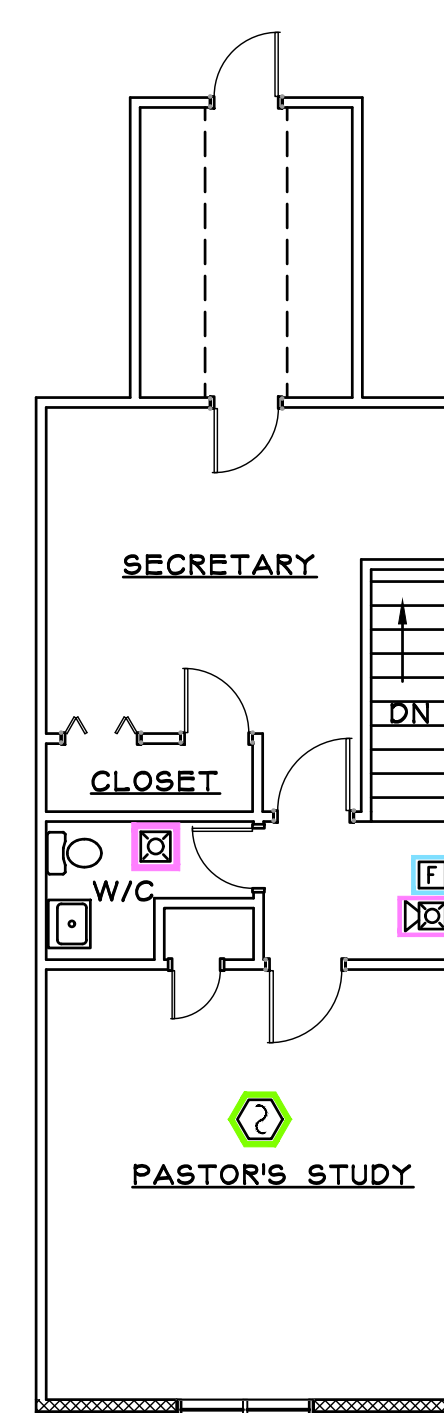


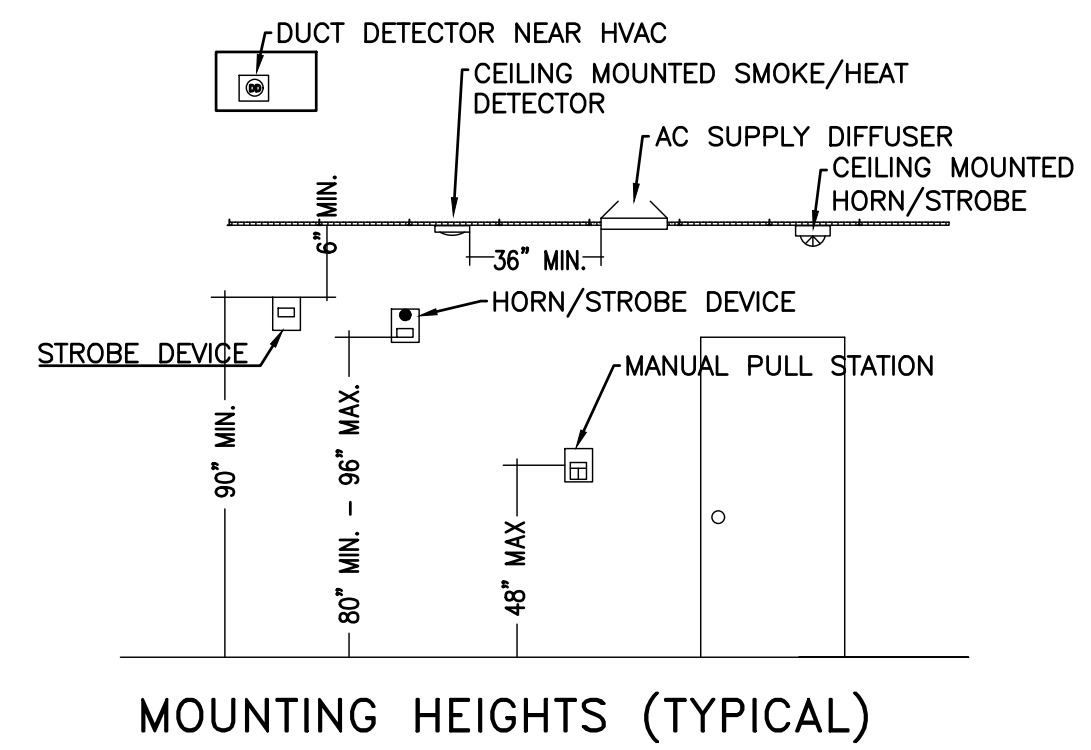
Drawing File: H:\2023\Gill FAP\Antioch Baptist Church-27Apr23.dwg
 Plotted Date: May 02, 2023 - 3:35pm
 Scale: 1/8" = 1'-0"



1 FA-2 FIRE ALARM PLAN - PASTOR STUDY



NOTE: SEE SUBMITTAL PACKAGE FOR DEVICE LITERATURE, BATTERY CALCULATIONS AND VOLTAGE DROP CALCULATIONS



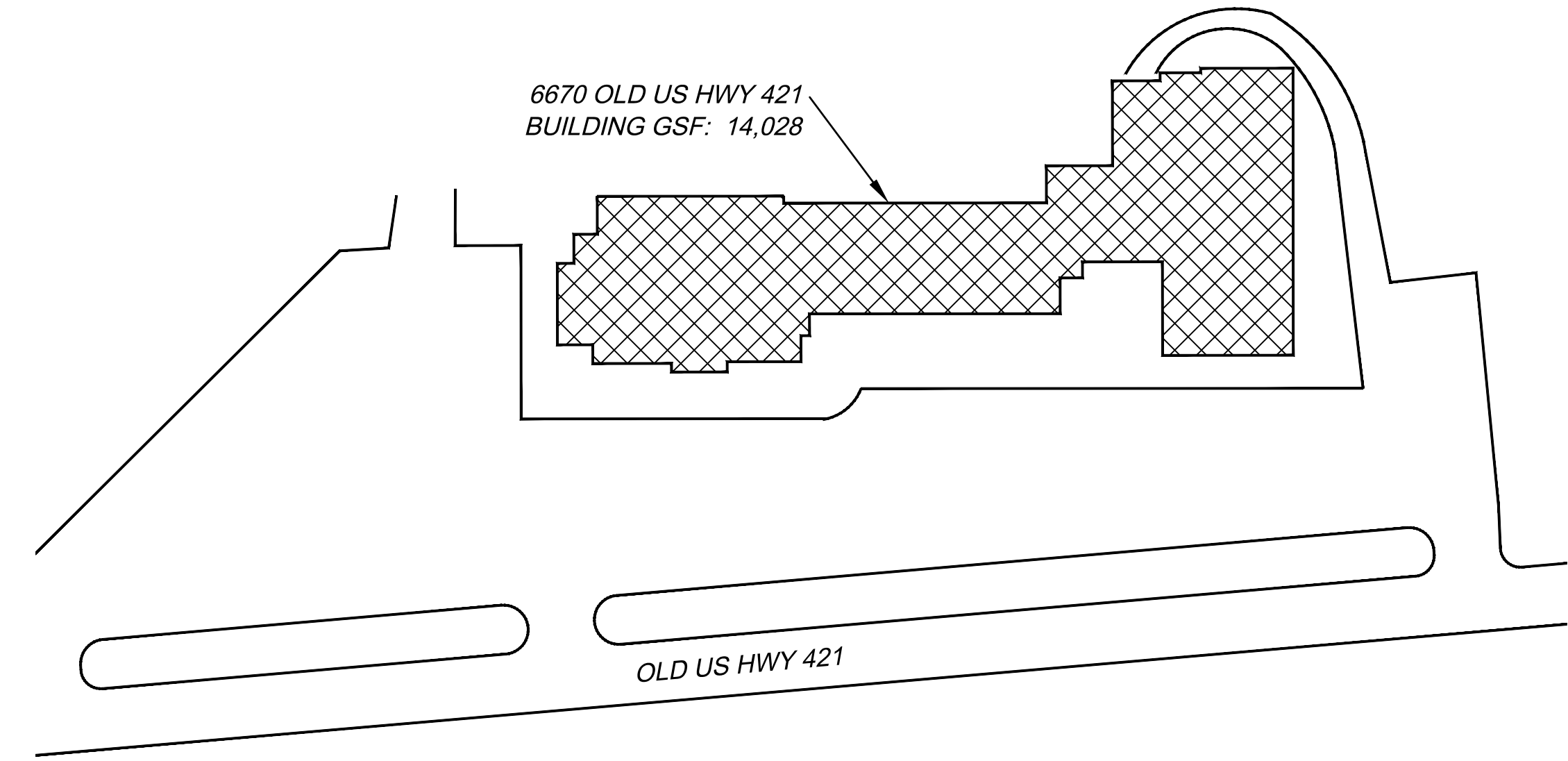
MOUNTING HEIGHTS (TYPICAL)

GENERAL NOTES:

- CONTRACTOR SHALL PROVIDE AND INSTALL NEW FIRE ALARM SYSTEM IN BUILDING AS REQUIRED BY NFPA 101, LIFE SAFETY CODE AND NFPA 72, THE FIRE ALARM CODE.
- PROVIDE BACK BOXES FOR ALL WALL MOUNTED DEVICES.
- ALL WIRING IS COPPER, WITH RED JACKET.
- DEVICES SHALL BE RED IN COLOR.
- VERIFY LOCATION OF ANNUCIATOR PANEL WITH FIRE MARSHAL.
- THE ENTIRE SYSTEM SHALL BE UL LISTED AND MEET ALL REQUIREMENTS OF THE STATE CODES AND LOCAL FIRE DEPARTMENT.
- REFER TO FLOOR PLANS FOR EXACT NUMBER OF DEVICES. COORDINATE WITH OWNER FOR COMPLETE INSTALLATION PER CODE.

BUILDING SUMMARY AND SCOPE OF WORK:

THE BUILDING CONSTRUCTION TYPE IS TYPE V-B ACCORDING TO 2018 NORTH CAROLINA STATE BUILDING CODE
 BUILDING AREA GROSS SQUARE FEET: 14,028
 BUILDING IS NOT PROTECTED BY FIRE SPRINKLERS.
 BUILDING USE IS ASSEMBLY (A-3), ANTIOCH BAPTIST CHURCH.
 THIS DRAWING INCLUDES A BUILDING FLOOR PLAN THAT WAS DRAWN AND FIELD VERIFIED BY JENKINS CONSULTING ENGINEERS. THIS DRAWING SHOWS THE LOCATION OF NEW FIRE ALARM EQUIPMENT AND DEVICES.
 THE FACILITY WILL BE PROTECTED AND MONITORED BY A FIRE ALARM SYSTEM.
 THE SCOPE OF WORK INCLUDES INSTALLING A NEW FIRE ALARM CONTROL PANEL, NEW FIRE PULL HANDLES, HORN STROBES, STROBES, SMOKE DETECTORS AND HEAT DETECTORS. THE FIRE ALARM WILL BE MONITORED BY A CENTRAL STATION.
 NEW ADDRESSABLE FIRE ALARM CONTROL PANEL MS-10UD WILL BE INSTALLED.
 NEW FIRE PULL HANDLES WILL BE INSTALLED AND WILL BE EQUAL TO HONEYWELL BG-12L.
 NEW STROBE LIGHTS WILL BE INSTALLED AND WILL BE EQUAL TO SYSTEM SENSOR P2WRL.
 NEW HORN STROBES WILL BE INSTALLED AND WILL BE EQUAL TO SYSTEM SENSOR P2RL.
 NEW CEILING MOUNTED HORN STROBES WILL BE INSTALLED AND EQUAL TO SYSTEM SENSOR PC2RL.
 NEW SMOKE DETECTORS WILL BE INSTALLED AND WILL BE EQUAL TO SYSTEM SENSOR SD BK-2WB.
 NEW HEAT DETECTOR WILL BE INSTALLED AND WILL BE EQUAL TO SYSTEM SENSOR HD 5603.
 FIRE ALARM CONTRACTOR WILL TEST AND INSPECT NEW SYSTEM WITH LOCAL AUTHORITIES.



1 FA-2 EXISTING SITE PLAN
N.T.S.

FIRE ALARM SYSTEM MATRIX	BUILDING SYSTEM OUTPUTS						CENTRAL STATION		
	ACTIVE COMMON ALARM SIGNAL INDICATOR	ACTIVE ALARM SIGNAL	ACTIVE COMMON SUPERVISORY SIGNAL INDICATOR	ACTIVE ALARM SUPERVISORY SIGNAL	ACTIVE COMMON TRIBLE SIGNAL INDICATOR	ACTIVE TRIBLE SIGNAL	DISPLAY CHANGE OF STATUS ON ANNUNCIATOR	DISPLAY CHANGE OF STATUS ON PDP	DISPLAY CHANGE OF STATUS ON ANNUNCIATOR
MANUAL PULL STATION	X	X			X		X		X
BUILDING SMOKE DETECTOR	X	X			X		X		X
AC POWER FAILURE			X	X	X			X	X
SYSTEM LOW BATTERY			X	X	X			X	X
OPEN CIRCUIT			X	X	X			X	X
GROUND FAULT			X	X	X			X	X
NOTIFICATION APPLIANCE CIRCUIT SHORT			X	X	X			X	X

- PROGRAM AS SUPERVISORY UNLESS OTHERWISE REQUIRED BY LOCAL AHJ TO BE A GENERAL ALARM.

FIRE ALARM SYMBOL LEGEND	
SYMBOL	DESCRIPTION
	FIRE ALARM CONTROL PANEL MS-10UD (NEW) W/ ANNUNCIATOR
	REMOTE ANNUNCIATOR (1 REQUIRED) (FIRE-LITE ANN-80)
	FIRE ALARM PULL STATION (HONEYWELL BG-12L)
	STROBE UNIT (SYSTEM SENSOR P2WRL)
	HORN/STROBE UNIT (SYSTEM SENSOR P2RL)
	CEILING MOUNTED HORN/STROBE UNIT (SYSTEM SENSOR PC2RL)
	SMOKE DETECTOR (SYSTEM SENSOR BK-2WB)
	HEAT DETECTOR (SYSTEM SENSOR 5603)
	DUPLEX-120V, 20AMP, DEDICATED PANEL A CIRCUIT 27 (OR DIRECT WIRED TO BREAKER)
	END OF LINE RESISTOR

NOTES

ALL FIRE ALARM EQUIPMENT TO MEET NFPA 72
 THE FIRE ALARM SYSTEM SHOWN HERE DEPICTS A CLASS "B" SYSTEM
 NEW FIRE ALARM CONTROL PANEL (MS-10UD)
 PROVIDE ADDITIONAL ZONE MODULES AS REQ'D FOR THE ADDITIONAL DEVICES

JENKINS CONSULTING ENGINEERS, PA
 OFFICE: 1000 MARKET RD., FAYETTEVILLE, NC 28111-1902
 CORPORATION: 910.822.1124

DESIGNED/CHECKED BY: B. JENKINS
 DRAWN BY: MAW
 PROJECT #: 2023-04-18
 DATE: 3 MAY 23

FINAL DRAWING [] FOR REVIEW PURPOSES ONLY
 PRELIMINARY [] FOR DESIGN DEVELOPMENT ONLY
 FINAL DRAWING [x] FOR CONSTRUCTION

PROJECT: FIRE ALARM PLAN: ANTIOCH BAPTIST CHURCH
 6670 OLD US HWY 421
 LILLINGTON, NC. 27546

SHEET: FIRE ALARM FLOOR PLAN RISER/NOTES & MATRIX

FA-2