



Fire Marshal Division

P.O. Box 370

Lillington, NC 27546

910-893-7580

Application for Plan Review

Application # _____ - _____

Date Received: _____ Received By: _____

Name of Project: Antioch Baptist Church

Physical Address of Project: 6670 Old US Hwy 421

Lillington NC 27546

Plans Submitted By: Chris Hill - Gill Security

Project Phone: (910)-489-0709 (C)

Contact Person/Address: 818 Ramsey St.

Fayetteville, NC 28301

Contact Phone: (910)-433-2868 () -

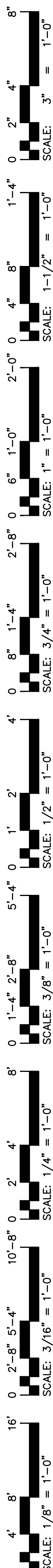
Contractor's Name/Info: Chris Hill

NC License: 24116-SPLN

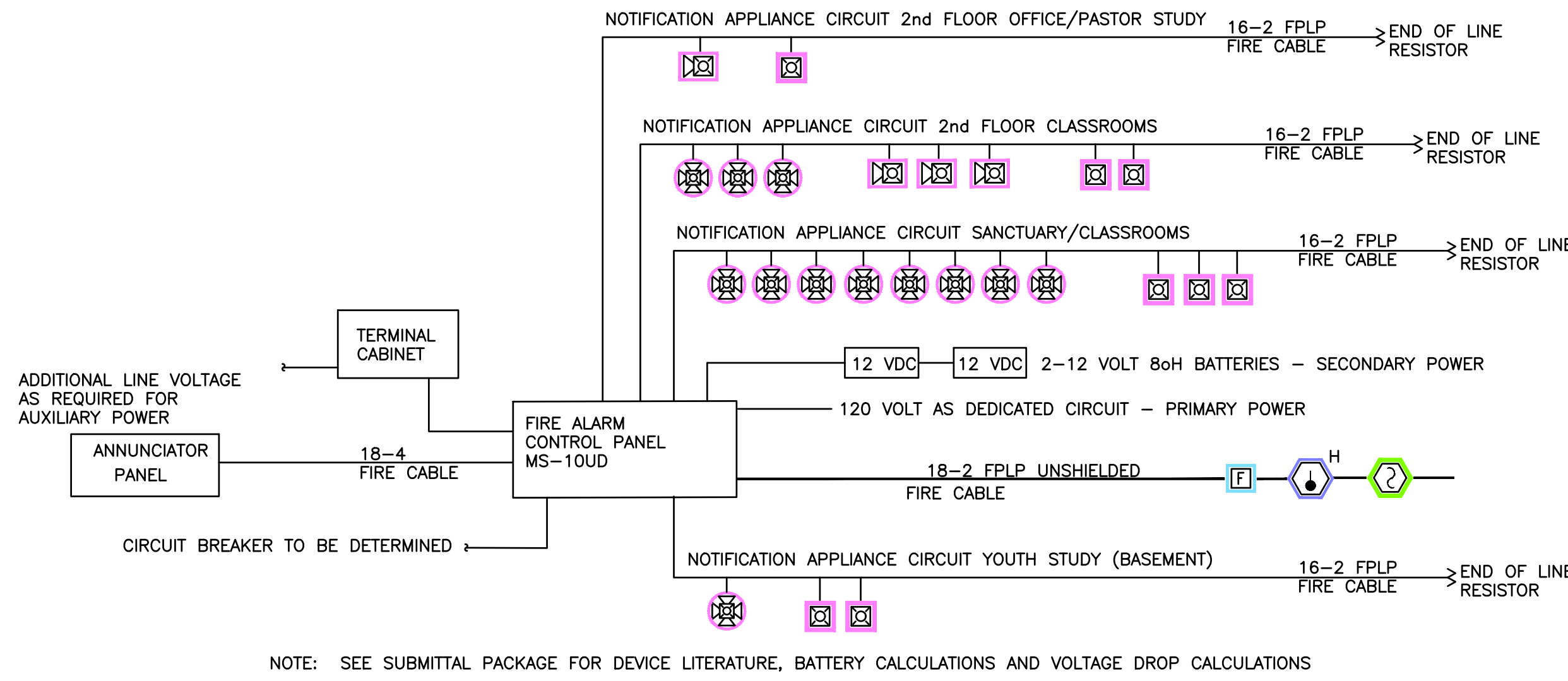
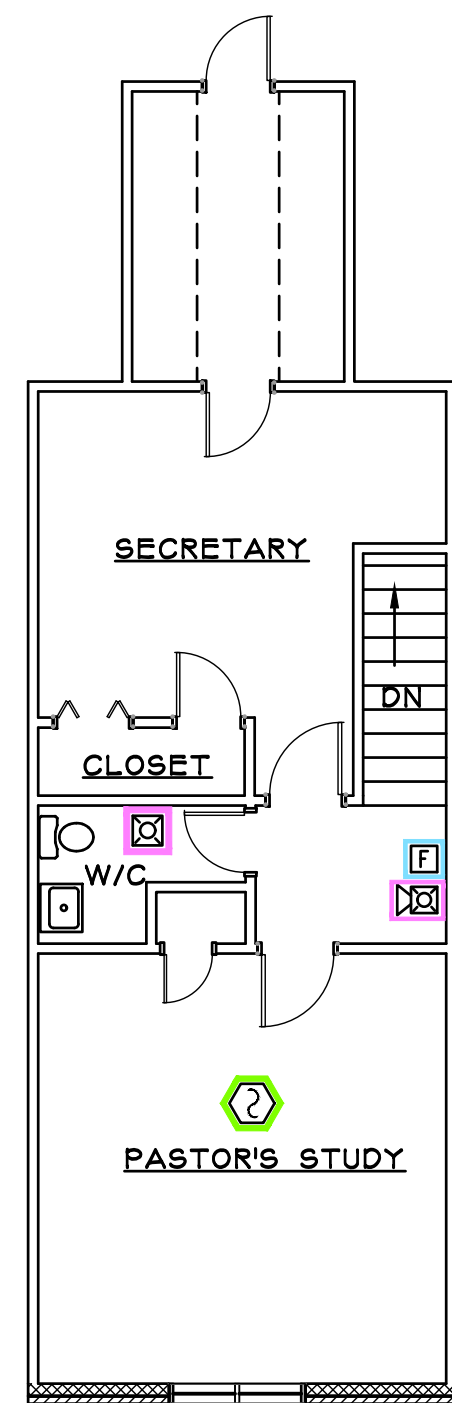
Contractor's Phone: (910)-489-0709

- Plans that are submitted will be reviewed as quickly as possible with an average time of review between 7-10 working days.
- Status checks may be conducted on plan reviews by visiting the website <http://hteweb.harnett.org/Click2GovBP/Index.jsp> or by calling the Harnett County Central Permitting Office (910-893-4759), or the Harnett County Fire Marshal's Office (910-893-7580).
- Approved plans must be picked up from the Central Permitting Office and all fees paid before any required inspections can be conducted.

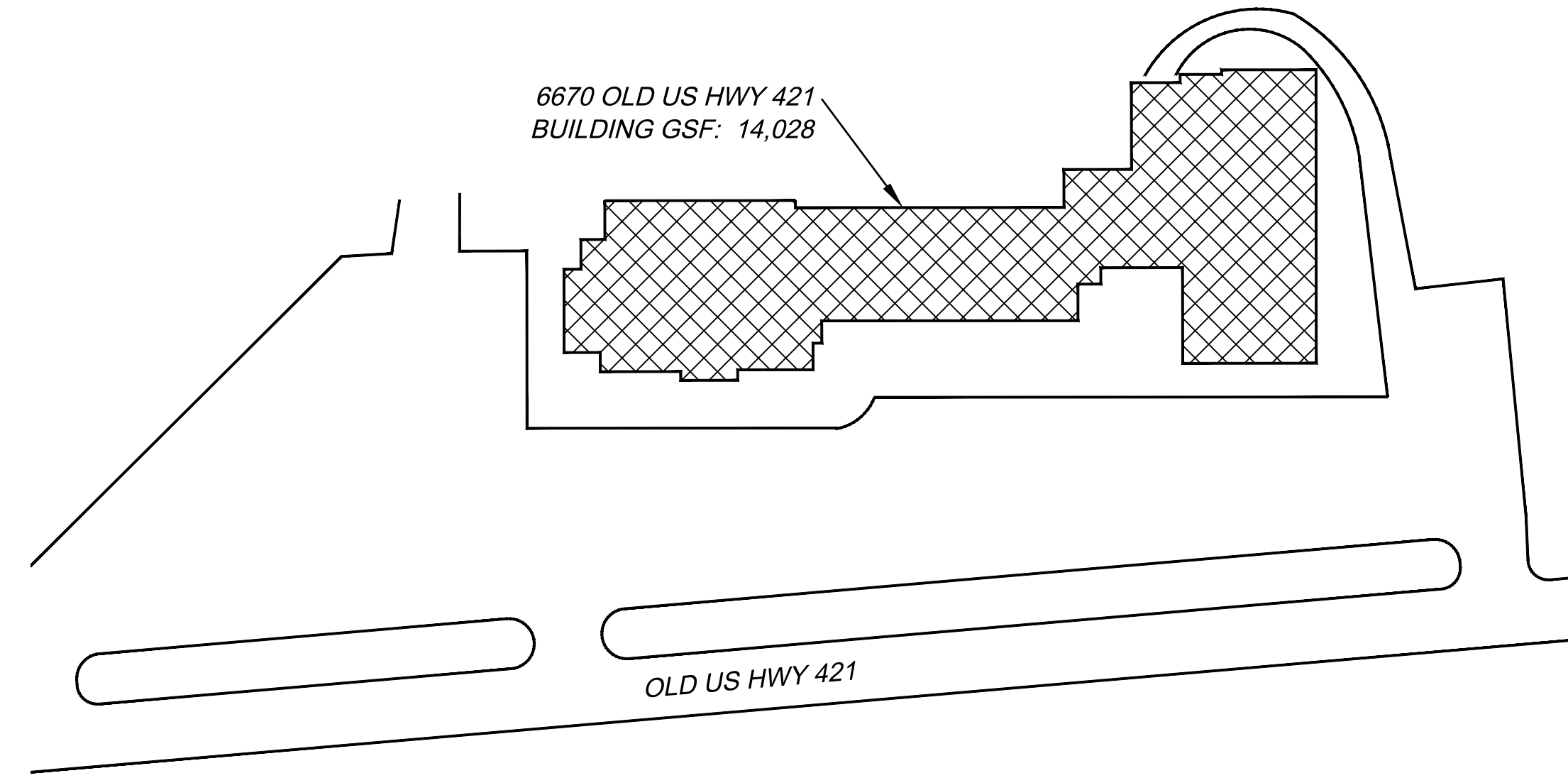
Drawing File: H:\2023\Gill FAP\Antioch Baptist Church-27Apr23.dwg
 Plotted Date: May 02, 2023 - 3:35pm
 Scale: 1/8" = 1'-0"



1 FIRE ALARM PLAN - PASTOR STUDY



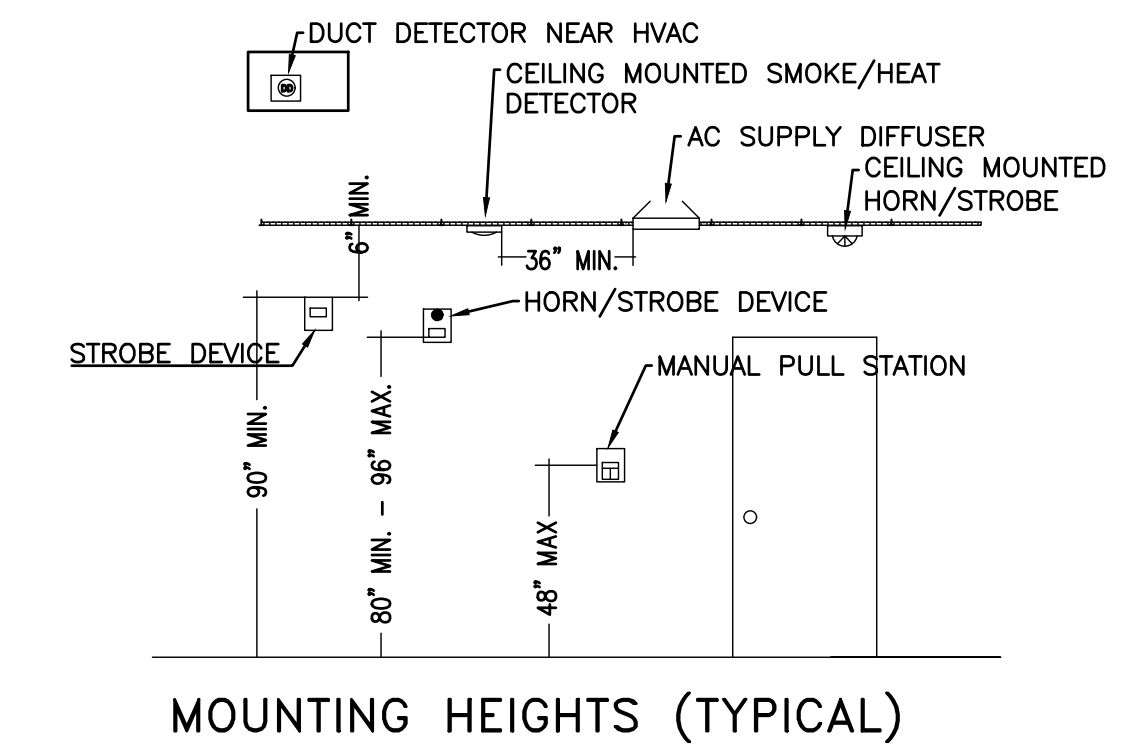
NOTE: SEE SUBMITTAL PACKAGE FOR DEVICE LITERATURE, BATTERY CALCULATIONS AND VOLTAGE DROP CALCULATIONS



1 EXISTING SITE PLAN
FA-2 N.T.S.

FIRE ALARM SYSTEM MATRIX	BUILDING SYSTEM OUTPUTS						CENTRAL STATION	
	ACTIVE COMMON ALARM SIGNAL INDICATOR	ACTIVE ALARM SIGNAL	ACTIVE COMMON SUPERVISORY SIGNAL INDICATOR	ACTIVE ALARM SUPERVISORY SIGNAL	ACTIVE COMMON TRIBLE SIGNAL INDICATOR	ACTIVE ALARM TRIBLE SIGNAL	DISPLAY CHANGE OF STATUS ON ANNUNCIATOR	DISPLAY CHANGE OF STATUS ON CENTRAL STATION
MANUAL PULL STATION	X	X			X		X	X
BUILDING SMOKE DETECTOR	X	X			X		X	X
AC POWER FAILURE			X	X	X		X	X
SYSTEM LOW BATTERY			X	X	X		X	X
OPEN CIRCUIT			X	X	X		X	X
GROUND FAULT			X	X	X		X	X
NOTIFICATION APPLIANCE CIRCUIT SHORT			X	X	X		X	X

- PROGRAM AS SUPERVISORY UNLESS OTHERWISE REQUIRED BY LOCAL AHJ TO BE A GENERAL ALARM.



MOUNTING HEIGHTS (TYPICAL)

GENERAL NOTES:

- CONTRACTOR SHALL PROVIDE AND INSTALL NEW FIRE ALARM SYSTEM IN BUILDING AS REQUIRED BY NFPA 101, LIFE SAFETY CODE AND NFPA 72, THE FIRE ALARM CODE.
- PROVIDE BACK BOXES FOR ALL WALL MOUNTED DEVICES.
- ALL WIRING IS COPPER, WITH RED JACKET.
- DEVICES SHALL BE RED IN COLOR.
- VERIFY LOCATION OF ANNUNCIATOR PANEL WITH FIRE MARSHAL.
- THE ENTIRE SYSTEM SHALL BE UL LISTED AND MEET ALL REQUIREMENTS OF THE STATE CODES AND LOCAL FIRE DEPARTMENT.
- REFER TO FLOOR PLANS FOR EXACT NUMBER OF DEVICES. COORDINATE WITH OWNER FOR COMPLETE INSTALLATION PER CODE.

BUILDING SUMMARY AND SCOPE OF WORK:

THE BUILDING CONSTRUCTION TYPE IS TYPE V-B ACCORDING TO 2018 NORTH CAROLINA STATE BUILDING CODE

BUILDING AREA GROSS SQUARE FEET: 14,028

BUILDING IS NOT PROTECTED BY FIRE SPRINKLERS.

BUILDING USE IS ASSEMBLY (A-3), ANTIOCH BAPTIST CHURCH.

THIS DRAWING INCLUDES A BUILDING FLOOR PLAN THAT WAS DRAWN AND FIELD VERIFIED BY JENKINS CONSULTING ENGINEERS. THIS DRAWING SHOWS THE LOCATION OF NEW FIRE ALARM EQUIPMENT AND DEVICES.

THE FACILITY WILL BE PROTECTED AND MONITORED BY A FIRE ALARM SYSTEM.

THE SCOPE OF WORK INCLUDES INSTALLING A NEW FIRE ALARM CONTROL PANEL, NEW FIRE PULL HANDLES, HORN STROBES, STROBES, SMOKE DETECTORS AND HEAT DETECTORS. THE FIRE ALARM WILL BE MONITORED BY A CENTRAL STATION.

NEW ADDRESSABLE FIRE ALARM CONTROL PANEL MS-10UD WILL BE INSTALLED.

NEW FIRE PULL HANDLES WILL BE INSTALLED AND WILL BE EQUAL TO HONEYWELL BG-12L.

NEW STROBE LIGHTS WILL BE INSTALLED AND WILL BE EQUAL TO SYSTEM SENSOR P2WRL.

NEW HORN STROBES WILL BE INSTALLED AND WILL BE EQUAL TO SYSTEM SENSOR P2RL.

NEW CEILING MOUNTED HORN STROBES WILL BE INSTALLED AND EQUAL TO SYSTEM SENSOR PC2RL.

NEW SMOKE DETECTORS WILL BE INSTALLED AND WILL BE EQUAL TO SYSTEM SENSOR SD BK-2WB.

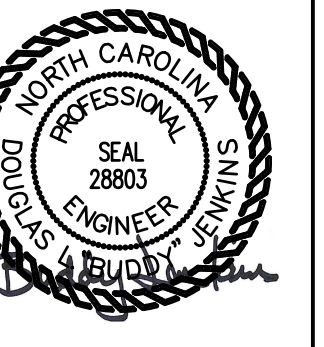
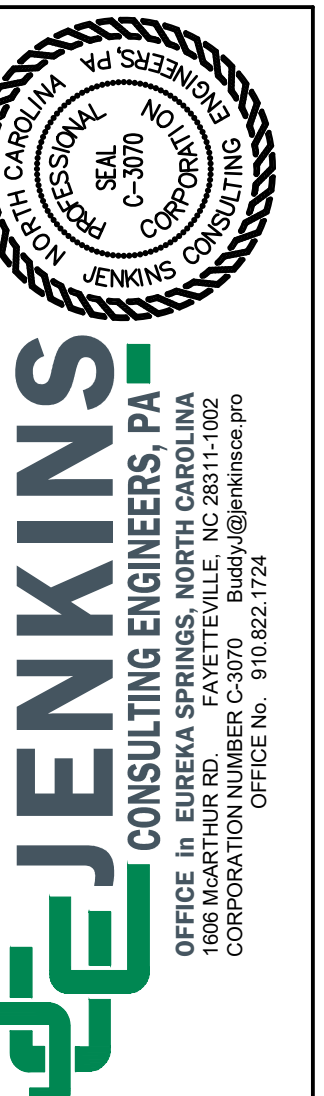
NEW HEAT DETECTOR WILL BE INSTALLED AND WILL BE EQUAL TO SYSTEM SENSOR HD 5603.

FIRE ALARM CONTRACTOR WILL TEST AND INSPECT NEW SYSTEM WITH LOCAL AUTHORITIES.

FIRE ALARM SYMBOL LEGEND	
SYMBOL	DESCRIPTION
	FIRE ALARM CONTROL PANEL MS-10UD (NEW) W/ ANNUNCIATOR
	REMOTE ANNUNCIATOR (1 REQUIRED) (FIRE-LITE ANN-80)
	FIRE ALARM PULL STATION (HONEYWELL BG-12L)
	STROBE UNIT (SYSTEM SENSOR P2WRL)
	HORN/STROBE UNIT (SYSTEM SENSOR P2RL)
	CEILING MOUNTED HORN/STROBE UNIT (SYSTEM SENSOR PC2RL)
	SMOKE DETECTOR (SYSTEM SENSOR BK-2WB)
	HEAT DETECTOR (SYSTEM SENSOR 5603)
	DUPLEX-120V, 20AMP, DEDICATED PANEL A CIRCUIT 27 (OR DIRECT WIRED TO BREAKER)
	END OF LINE RESISTOR

NOTES

ALL FIRE ALARM EQUIPMENT TO MEET NFPA 72
 THE FIRE ALARM SYSTEM SHOWN HERE DEPICTS A CLASS "B" SYSTEM
 NEW FIRE ALARM CONTROL PANEL (MS-10UD)
 PROVIDE ADDITIONAL ZONE MODULES AS REQ'D FOR THE ADDITIONAL DEVICES



3 May 2023

DESIGNED/CHECKED BY: B. JENKINS
 DRAWN BY: MAW
 PROJECT #: 2023-04-18
 DATE: 3 MAY 23

FINAL DRAWING [] FOR REVIEW PURPOSES ONLY
 PRELIMINARY [] FOR DESIGN DEVELOPMENT ONLY
 FINAL DRAWING [X] FOR CONSTRUCTION
 OWNER/TENANT:
 CONTRACTOR/BUILDER:



PROJECT: FIRE ALARM PLAN: ANTIOCH BAPTIST CHURCH
 LILLINGTON, NC. 27546
 6670 OLD US HWY 421
 SHEET: FIRE ALARM FLOOR PLAN RISER/NOTES & MATRIX

FA-2



MS-10UD-7 Battery Calculation

Secondary Power Source Requirements

Device Type	Standby Current (amps)		Secondary Alarm Current (amps)		Total
	Qty	Current Draw	Qty	Current Draw	
1. System					
Main Circuit Board	1	x 0.127000	=	0.127000	
4XTMF	0	x 0.005000	=		
CAC-5X	0	x 0.001000	=		
IPDACT-2	0	x 0.093000	=		
IPDACT-2UD	0	x 0.098000	=		
2. Annunciators					
ANN-80	1	x 0.015000	=	0.015000	
ANN-80-W	0	x 0.015000	=		
ANN-RLY	0	x 0.015000	=		
ANN-I/O	0	x 0.035000	=		
ANN-I/O LEDs	0	x 0.000000	=		
ANN-S/PG	0	x 0.045000	=		
ANN-LED	0	x 0.028000	=		
ANN-RLED	0	x 0.028000	=		
3. Resettable Power					
Conventional Detectors	1	x 0.001150	=	0.001150	
IDC's Used Minus 1					
EOLR-1	0	x 0.020000	=		
4. Other Devices					
Miscellaneous Device 1	0	x 0.000000	=		
Miscellaneous Device 2	0	x 0.000000	=		
Miscellaneous Device 3	0	x 0.000000	=		
Miscellaneous Device 4	0	x 0.000000	=		
Miscellaneous Device 5	0	x 0.000000	=		
5. Notification Appliances					
NAC 1		0.000000	=		2.900000
NAC 2		0.000000	=		0.387000
NAC 3		0.000000	=		0.000000
NAC 4		0.000000	=		0.000000
Resettable 1		0.000000	=		0.000000
Non-Resettable 1		0.000000	=		0.000000
Total Standby Load				0.143150	
Total Alarm Load					3.952000

	0	X	0.000000	=		0	X	0.000000	=
	0	X	0.000000	=		0	X	0.000000	=
Total Standby Load			0.000000		Total Alarm Load			0.000000	

