

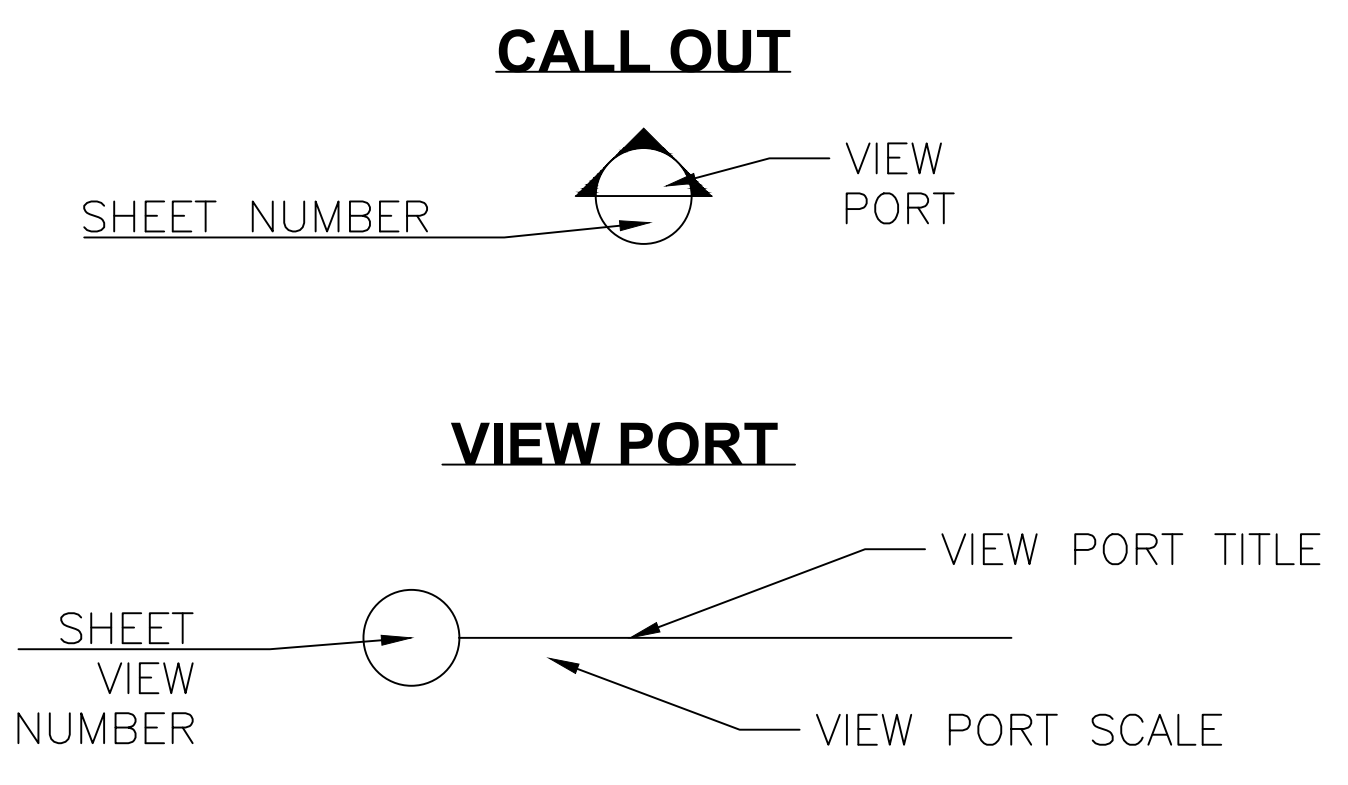
Reviewed for Fire Code Compliance
 Leslie Jackson
 08/12/2022 12:12:36 PM

Sheet Number	Sheet Title
FAC	COVER SHEET
FA1	SECTION A
FA2	SECTION B
FA3	SECTION C
FA4	SECTION D
FA5	SECTION E
FA6	SECTION F
FA7	SECTION G & 2ND FL OFFICE
FA8	REPORTS

SCOPE OF WORK:
 INSTALLING A FIRE ALARM SYSTEM IN A SPRINKLED F/B OCCUPANCY.

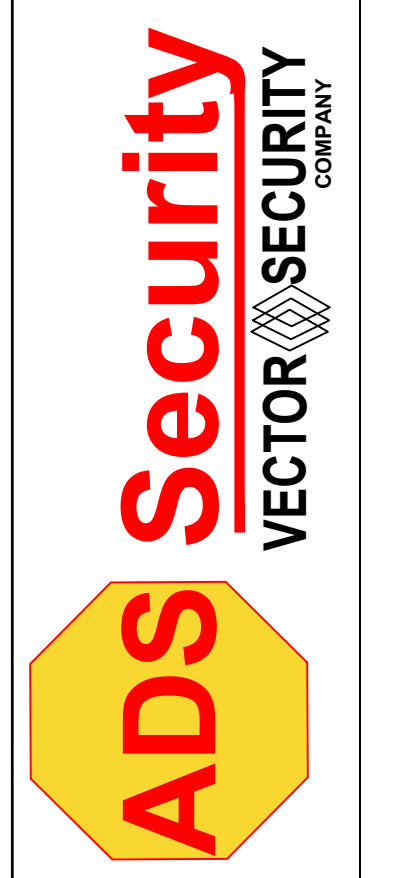
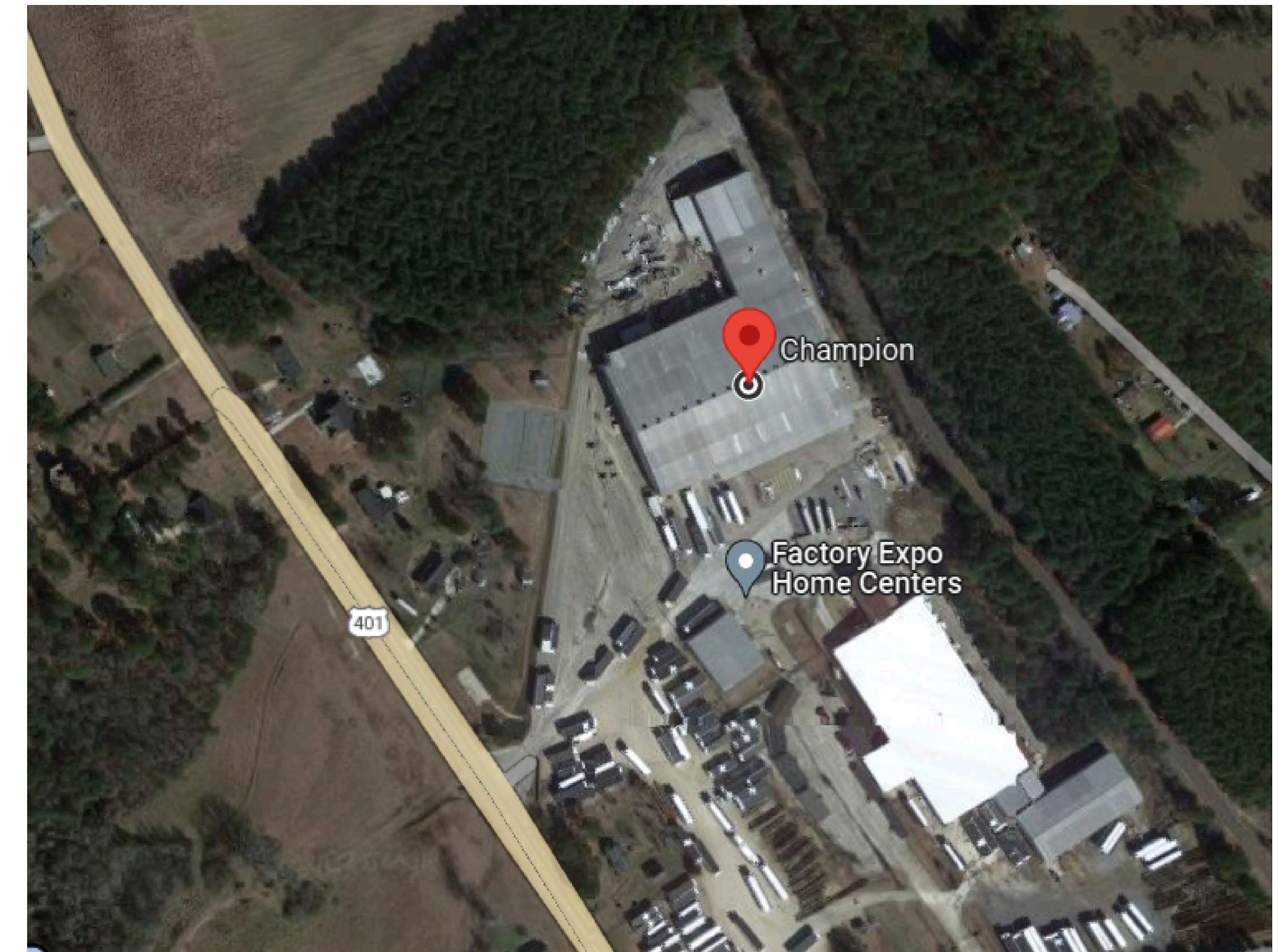
NOTES:

- 120 VAC PROVIDED BY OTHERS
- EXISTING FACP MONITORED VIA APPROVED CELLULAR COMMUNICATOR
- CODE REFERENCES 2018 IBC, 2017 NFPA 70, AND 2016 NFPA 72
- DUCT MOUNTED SMOKE MOUNTED BY HVAC CONTRACTOR AND WIRED BY ALARM CONTRACTOR
- DUCT SHUT DOWN RELAYS WIRED TO HVAC BY HVAC CONTRACTOR
- CONSULT WITH AHJ AND GENERAL CONTRACTOR FOR DUCT MOUNTED SMOKE REMOTE INDICATOR LOCATION
- DEDICATED CIRCUITS SHALL BE PROVIDED FOR ALL FACP AND ASSOCIATED PANELS.
- POWER LIMITED WIRING SHALL BE SEPARATED FROM NON POWER LIMITED ELECTRIC LIGHT, AND CLASS 1 CIRCUITS BY A MINIMUM OF 2-INCHES
- THE CIRCUIT DISCONNECTING MEANS SHALL BE ACCESSIBLE ONLY TO AUTHORIZED PERSONS, SHALL INCLUDE A BREAKER LOCK AND LABELED FIRE ALARM
- ALL WIRING AND CABLING METHODS SHALL COMPLY WITH NFPA 70 ARTICLE 760. ALL WIRINGS WITHIN 7-FEET OF THE FLOOR SHALL BE IN CONDUIT. WIRING NOT IN CONDUIT MUST BE CONCEALED AND PROTECTED BY BUILDING ELEMENTS
- BUSHING ARE REQUIRED WHERE CABLE ENTERS A BOX OR CONDUIT
- ALL CONNECTIONS MUST BE IN JUNCTION BOXES OR DEVICES
- JUNCTION BOXES MUST BE LABELED OR MARKED TO SHOW THEY ARE PART OF THE FIRE ALARM SYSTEM
- ALL WIRING PASSING THROUGH METAL STUDS MUST BE PROTECTED BY GROMMETS OR BUSHINGS
- WIRING ABOVE A DROP CEILING MUST BE SUPPORTED EVERY 54-INCHES AT THE TOP OF THE BUILDING STRUCTURE. WIRE CANNOT BE SUPPORTED BY GRID OR SUPPORT WIRES
- INSTALLING CONTRACTOR SHALL CONDUCT A PRE-INSPECTION AND TESTING PRIOR TO SCHEDULING AN ACCEPTANCE TEST WITH THE FIRE DEPARTMENT



DEVICE LEGEND				
SYMBOL	QTY	MANUFACTURER	PART NO	DESCRIPTION
[FACP]	1	POTTER	AFC-1000	FIRE ALARM CONTROL PANEL
[CEBL]	1	DMP	DUALCOMNF-LV (24V)	UNIVERSAL FIRE ALARM COMMUNICATOR WITH HARDWIRED NETWORK PRIMARY AND LTE BACKUP (VERIZON)
[FAA]	1	POTTER	RA-6500	160 CHARACTER LCD ANNUNCIATOR
[PS]	3	GENERIC	AIR PRESSURE SWITCH	
[VTS]	7	GENERIC	VALVE TAMPER SUPERVISORY SWITCH	
[F] PAD100-PSDA	8	POTTER	PAD100-PSDA	ADDRESSABLE PULL STATION DUAL ACTION
[AM] PAD100-DIM	7	POTTER	PAD100-DIM	DUAL INPUT MODULE
[AM] PAD100-SIM	3	POTTER	PAD100-SIM	SINGLE INPUT MODULE
[S] 6DB	1	POTTER	PAD200-PD W/PAD100-6DB	PHOTOELECTRIC SMOKE DETECTOR WITH 6" STANDARD BASE
[WF]	7	GENERIC	WATERFLOW SWITCH	
[S] P2RL	37	SYSTEM SENSOR	P2RL	2-WIRE, HORN STROBE, RED

CABLE AND WIRE LEGEND			
LABEL	PART NO	AWG	DESCRIPTION
A	18/2 FPLP/R (SLC)	18	2 COND. SOLID COPPER FPLP/R ADDRESSABLE UNSHIELDED
PLINK+	18/4 FPLP/R (P-LINK/PWR)	18	4 COND. SOLID COPPER FPLP/R ANALOG UNSHIELDED
T	RJ-11	22	4 COND. UNSHIELDED COMMUNICATIONS CABLE
V	14/2 FPLP/R (NAC)	14	2 COND. SOLID COPPER FPLP/R ANALOG UNSHIELDED
Z	18/2 FPLP/R (IDC)	18	2 COND. SOLID COPPER FPLP/R ANALOG UNSHIELDED



3001 ARMORY DR
 SUITE 100
 NASHVILLE TN
 37203

CHAMPION
 4055 US 401
 LILLINGTON NC 27546

DESIGNED BY:
 CHRIS OWENS

SYSTEMS
 APPLICATIONS
 AND DESIGN

NICET IV FAS
 #1333432

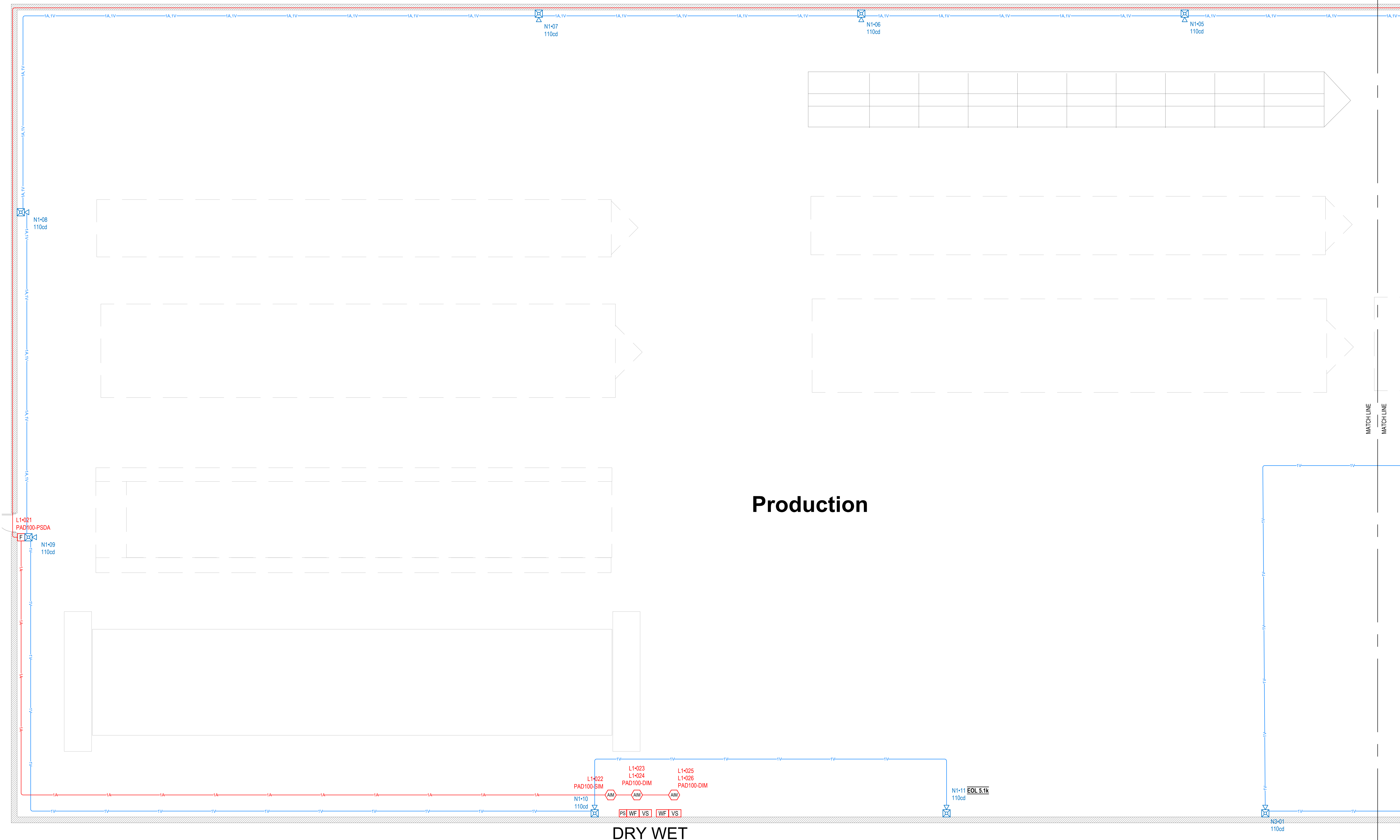
TN QA #1905

FCC GROL
 0027673896

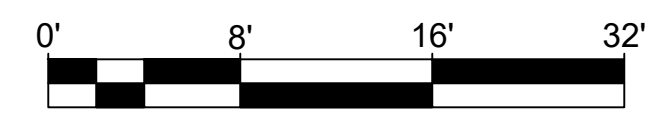
Revision	
1	7/23/2022

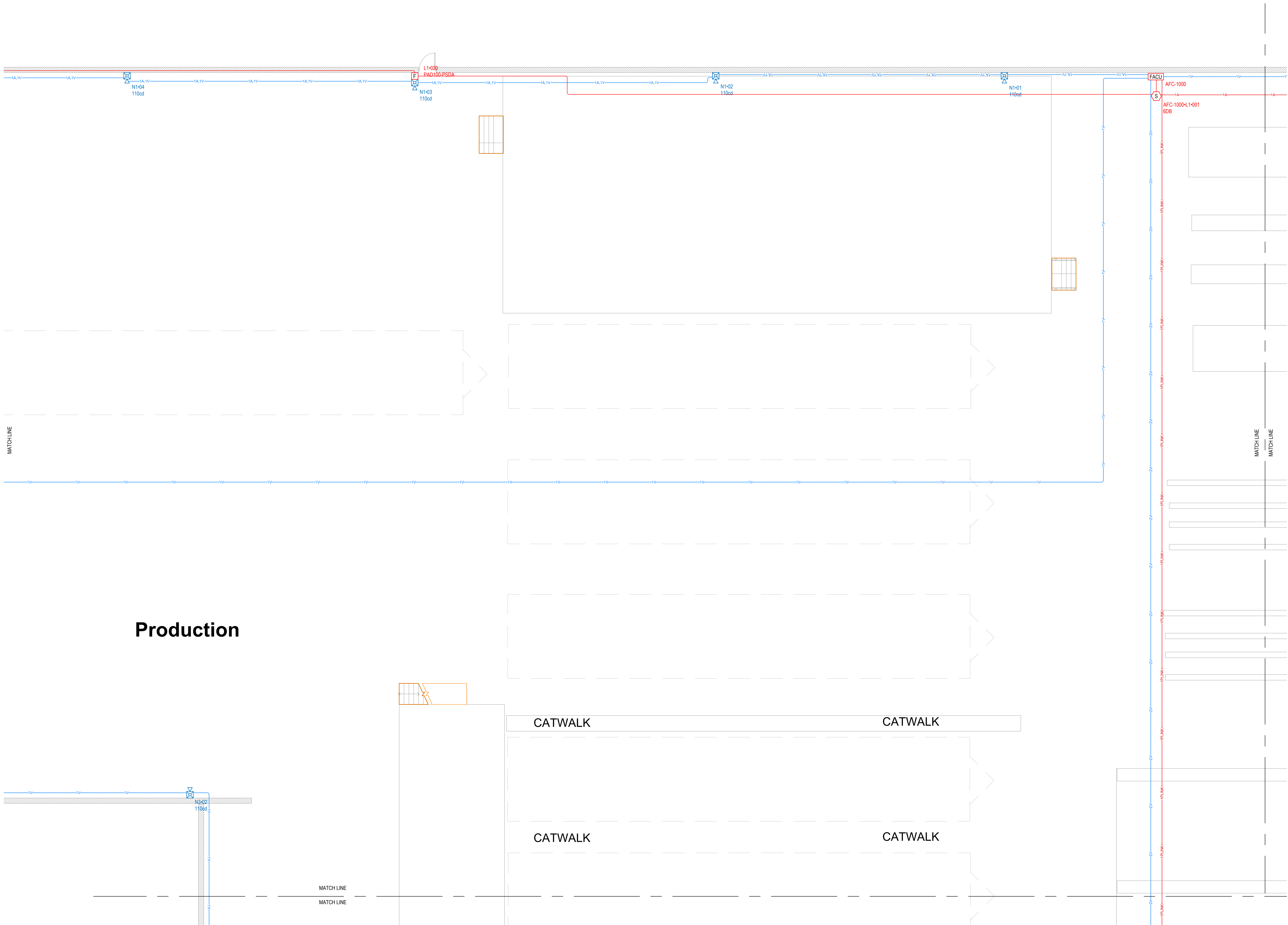
JOB NUMBER
 TBD
 PERMIT NUMBER
 TBD

OCCUPANCY
 F,B
 SHEET
 FAC



1 PLANT SECTION A
SCALE 1/8 INCH = 1 FOOT





Production

1

PLANT SECTION B
SCALE 1/8" INCH = 1 FOOT



3001 ARMORY DR
SUITE 100
NASHVILLE TN
37203

CHAMPION
4055 US 401
LILLINGTON NC 27546

DESIGNED BY:
CHRIS OWENS

SYSTEMS
APPLICATIONS
AND DESIGN

NICET IV FAS
#1333432

TN QA #1905

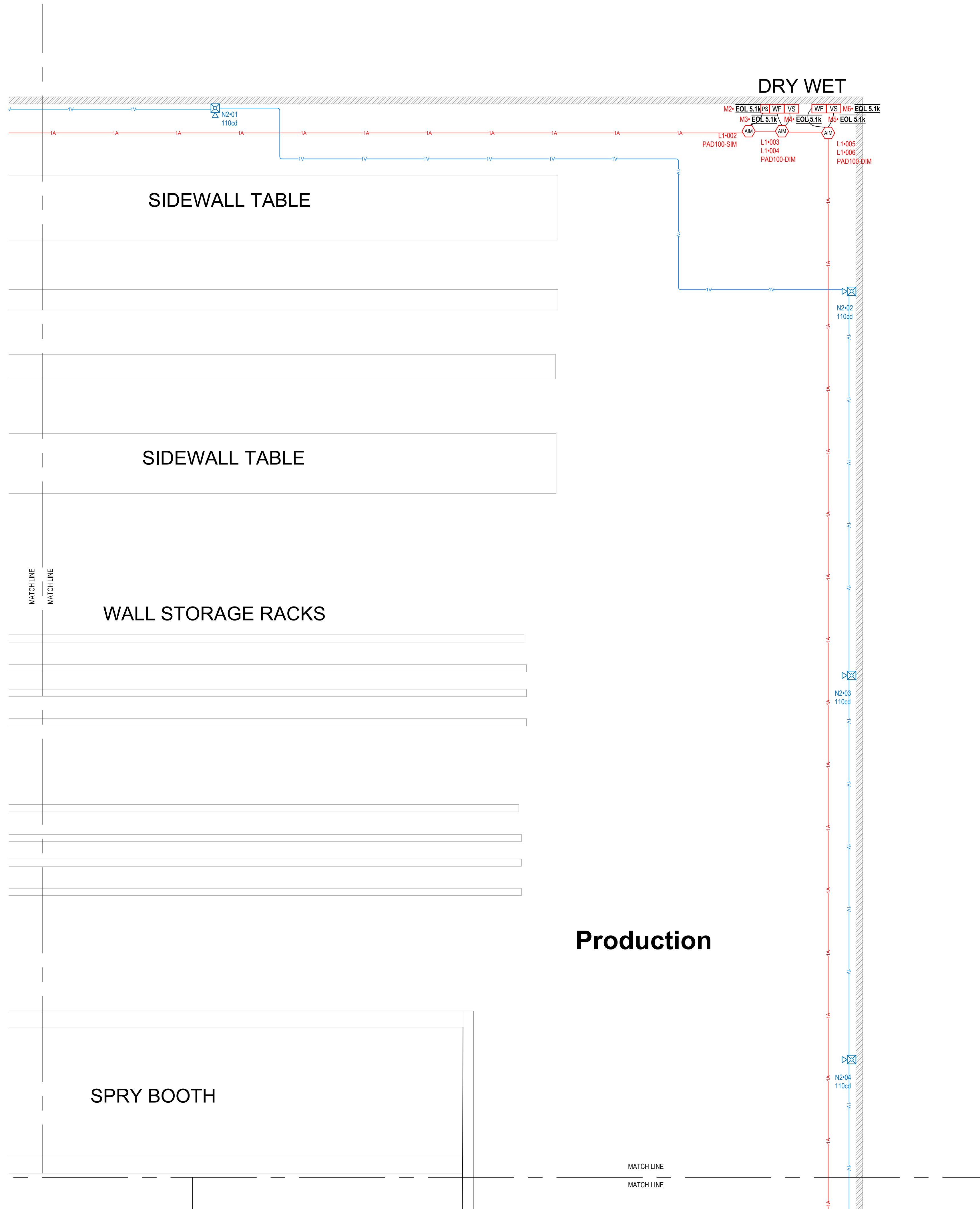
FCC GROL
0027673896

Revision	
1	7/23/2022

JOB NUMBER	TBD
PERMIT NUMBER	TBD

OCCUPANCY

F, B
SHEET
FA2



1 PLANT SECTION C
SCALE 1/8 INCH = 1 FOOT



3001 ARMORY DR
SUITE 100
NASHVILLE TN
37203

CHAMPION
4055 US 401
LILLINGTON NC 27546

DESIGNED BY:
CHRIS OWENS

SYSTEMS
APPLICATIONS
AND DESIGN

NICET IV FAS
#1333432

TN QA #1905

FCC GROL
0027673896

Revision	
1	7/23/2022

JOB NUMBER

TBD

PERMIT NUMBER

TBD

OCCUPANCY

F,B

SHEET

FA3

M19: EOL 5.1K
WET
M19: EOL 5.1K

M15: EOL 5.1K
M16: EOL 5.1K
M13: EOL 5.1K
M14: EOL 5.1K
M12: EOL 5.1K

N3-03
110cd

L1-07
PAD100-PSDA

N3-04
110cd

L1-015
L1-016
PAD100-DIM

L1-013
L1-014
PAD100-DIM

L1-012
PAD100-SIM

N3-05
110cd

MATCH LINE
MATCH LINE

1 PLANT SECTION D
SCALE 1/8 INCH = 1 FOOT



CATWALK

CATWALK

CATWALK

CATWALK

CATWALK

CATWALK

CATWALK

CATWALK

CATWALK

CATWALK

CATWALK

CATWALK

MUD BOOTH

CEUNG JG

STORAGE BALCONY

Produciton



3001 ARMORY DR
SUITE 100
NASHVILLE TN
37203

CHAMPION
4055 US 401
LILLINGTON NC 27546

DESIGNED BY:
CHRIS OWENS

SYSTEMS
APPLICATIONS
AND DESIGN

NICET IV FAS
#1333432

TN QA #1905

FCC GROL
0027673896

Revision	
1	7/23/2022

JOB NUMBER

TBD

PERMIT NUMBER

TBD

OCCUPANCY

F,B

SHEET

FA4

BOOTH

JG

Production

MATCH LINE

MATCH LINE
MATCH LINE

MATCH LINE

MATCH LINE

N2-05
110ct

N2-06
110ct

N2-07
110ct

1 PLANT SECTION E
SCALE 1/8 INCH = 1 FOOT



3001 ARMORY DR
SUITE 100
NASHVILLE TN
37203

CHAMPION
4055 US 401
LILLINGTON NC 27546

DESIGNED BY:
CHRIS OWENS

SYSTEMS
APPLICATIONS
AND DESIGN

NICET IV FAS
#1333432

TN QA #1905

FCC GROL
0027673896

Revision	
1	7/23/2022

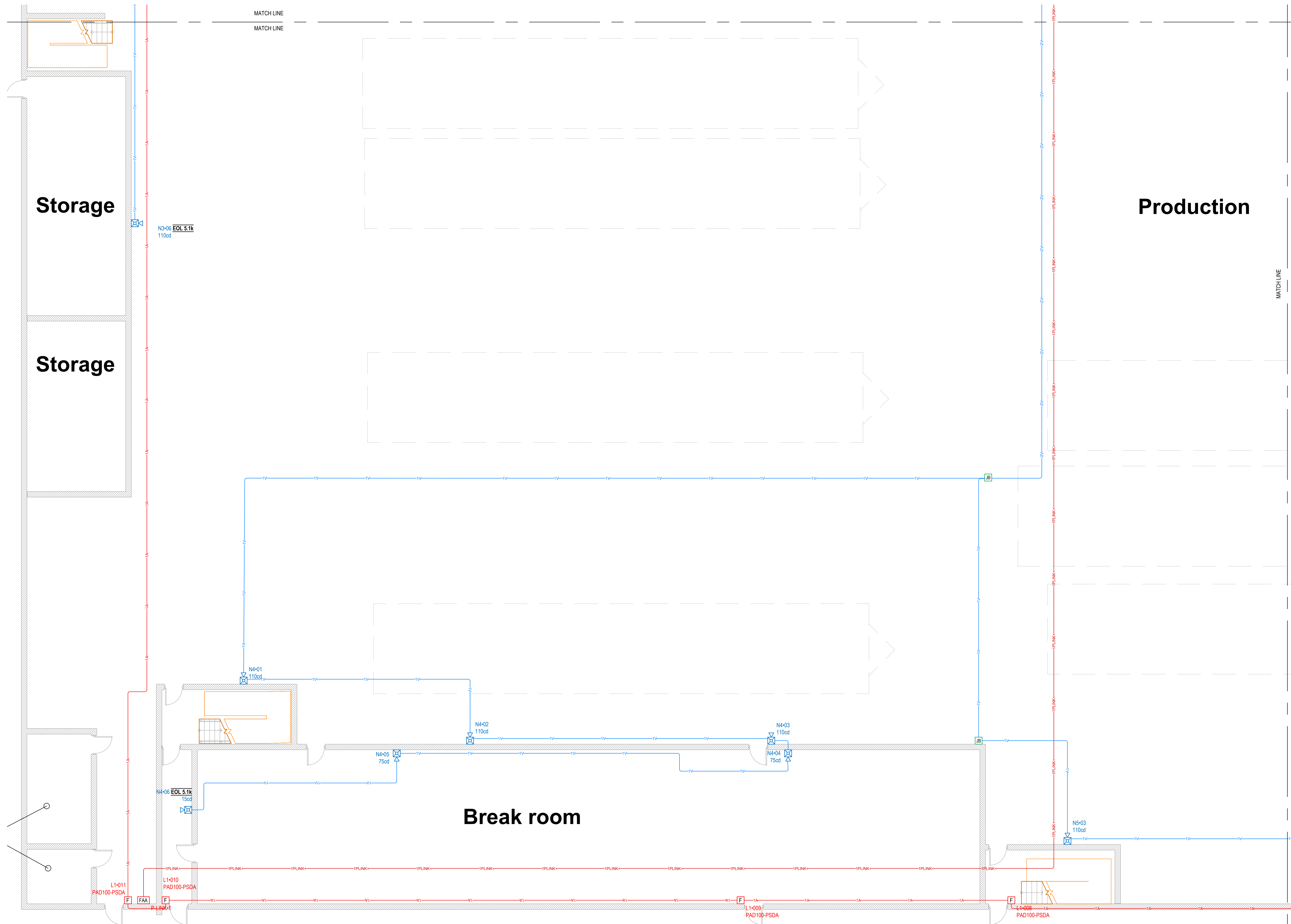
--	--

JOB NUMBER
TBD

PERMIT NUMBER
TBD

OCCUPANCY
F,B

SHEET
FA5



1 PLANT SECTION F
 SCALE 1/8 INCH = 1 FOOT



3001 ARMORY DR
 SUITE 100
 NASHVILLE TN
 37203

CHAMPION
 4055 US 401
 LILLINGTON NC 27546

DESIGNED BY:
 CHRIS OWENS

SYSTEMS
 APPLICATIONS
 AND DESIGN

NICET IV FAS
 #1333432

TN QA #1905

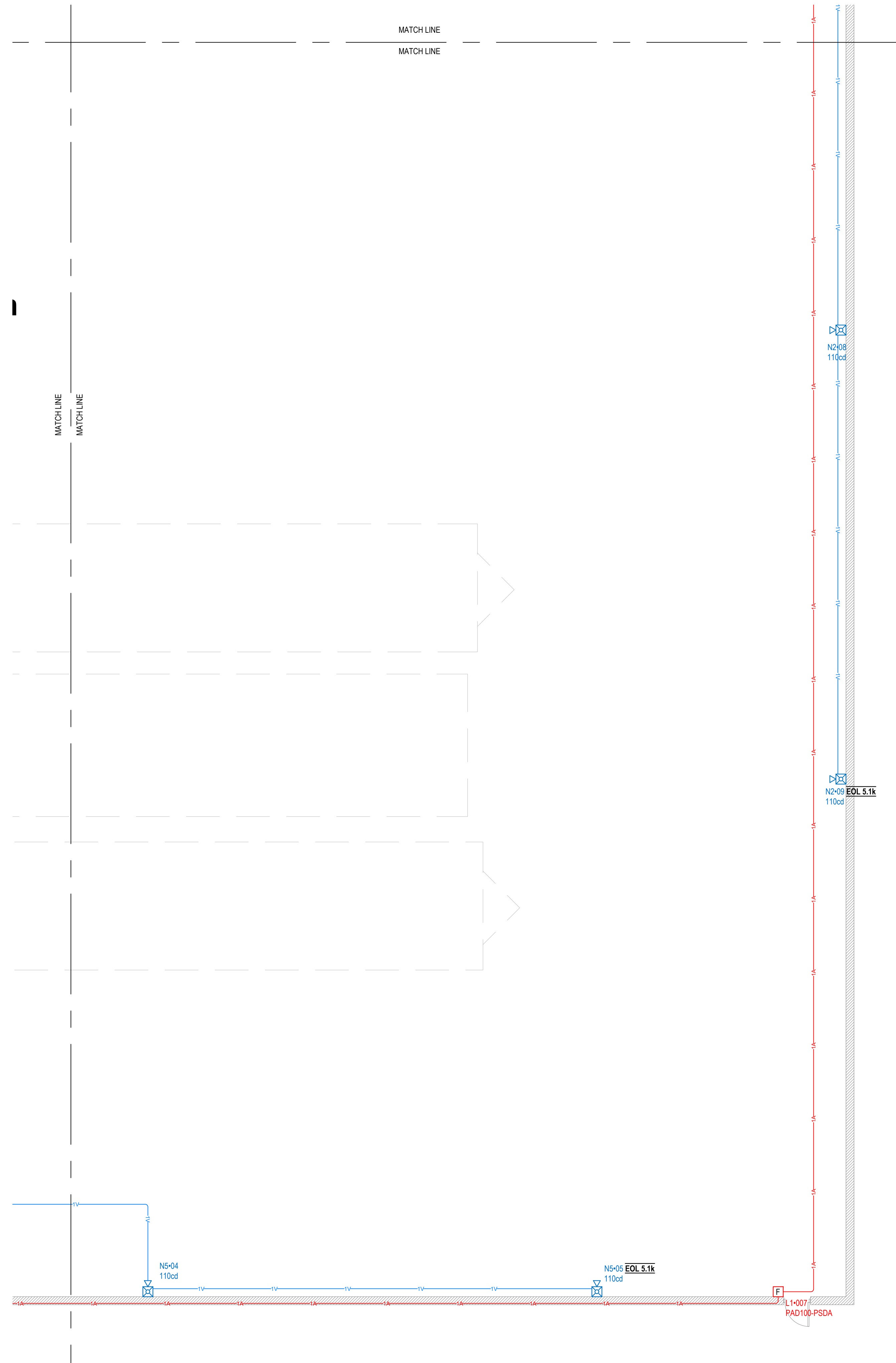
FCC GROL
 0027673896

Revision	
1	7/23/2022

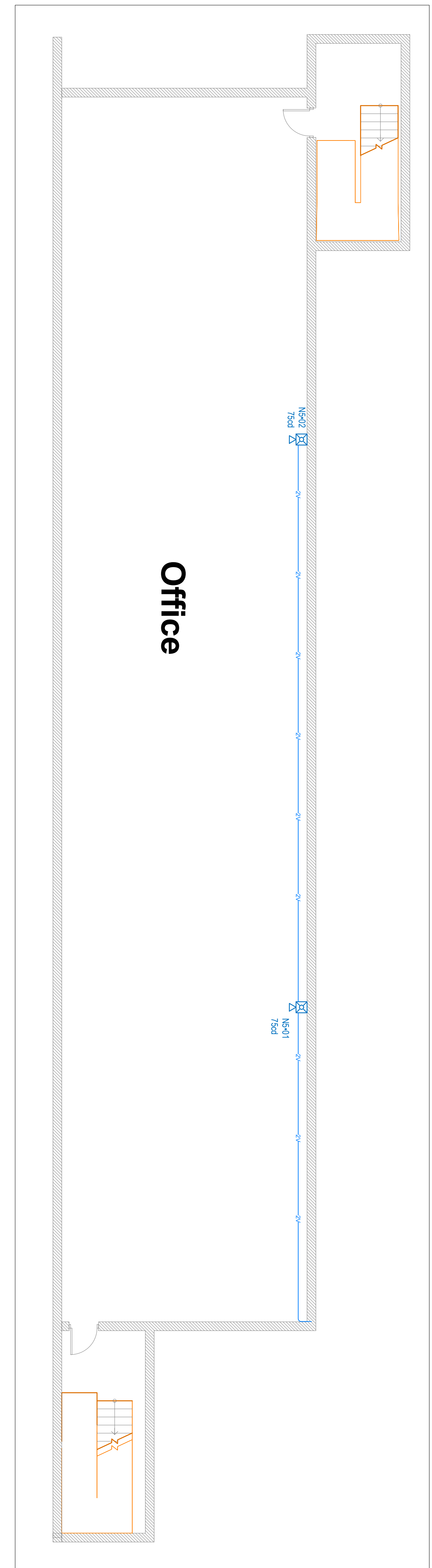
JOB NUMBER	TBD
PERMIT NUMBER	TBD

OCCUPANCY

F,B
 SHEET
 FA6



1 **PLANT SECTION G**
 SCALE 1/8 INCH = 1 FOOT
 0' 8' 16' 32'



1 **2ND FLOOR OFFICE**
 SCALE 1/8 INCH = 1 FOOT
 0' 8' 16' 32'



3001 ARMORY DR
 SUITE 100
 NASHVILLE TN
 37203

CHAMPION
 4055 US 401
 LILLINGTON NC 27546

DESIGNED BY:
 CHRIS OWENS

SYSTEMS
 APPLICATIONS
 AND DESIGN

NICET IV FAS
 #1333432

TN QA #1905

FCC GROL
 0027673896

Revision	
1	7/23/2022

JOB NUMBER	TBD
PERMIT NUMBER	TBD

OCCUPANCY
 F,B
 SHEET
 FA7

