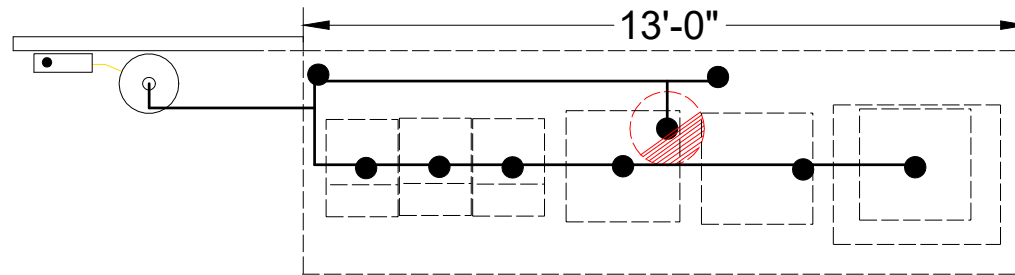
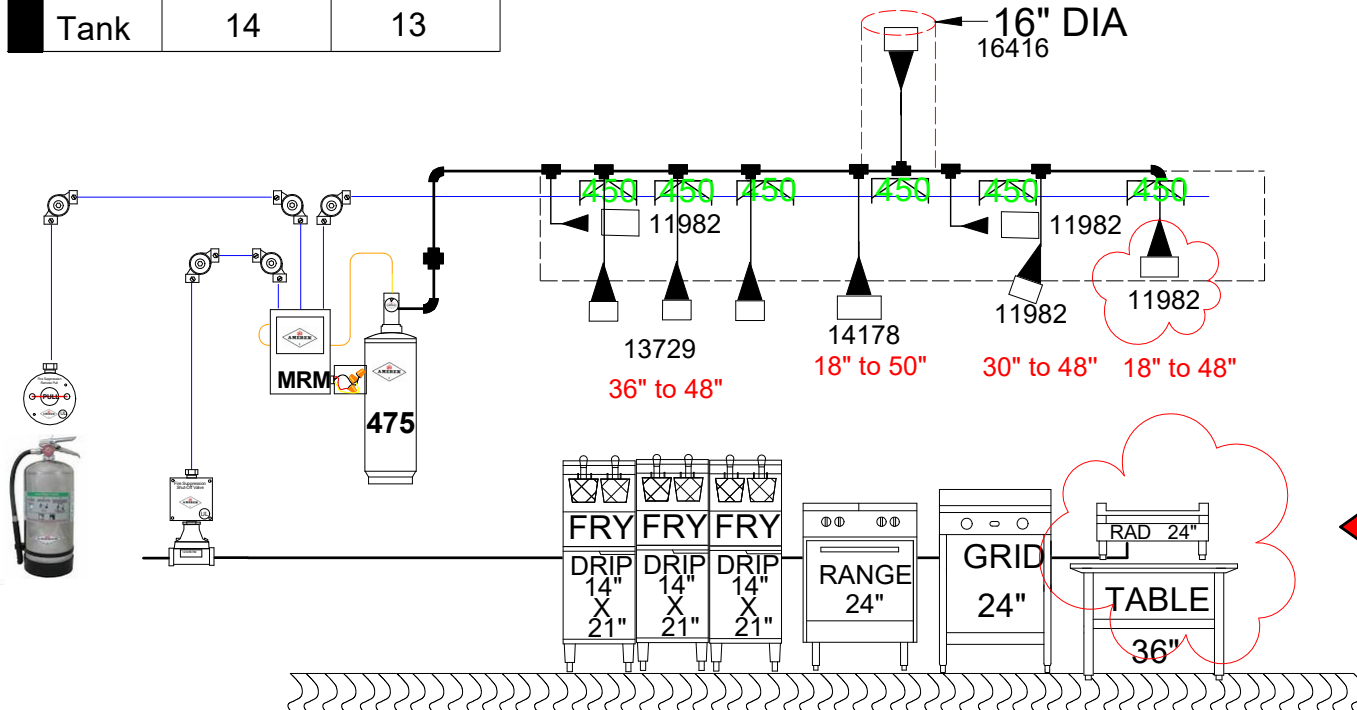




Adding nozzle to a char-grill that has been added to an existing hood and fire system.



Piping Color	Max Flow Points	Flow Points In Use
Tank	14	13



Controls, pipe routings, remote pull station and gas valve locations are for reference only, locations may change.

- (1) ALL GAS AND ELECTRICAL APPLIANCES UNDER HOOD SHUT DOWN BY OTHERS.
- (2) EXHAUST FAN CONTINUES TO RUN ON DISCHARGE OF FIRE SYSTEM BY OTHERS.
- (3) FRESH AIR FAN SHUTS DOWN ON DISCHARGE OF FIRE SYSTEM BY OTHERS.
- (4) FIRE ALARM SYSTEM ACTIVATES IF BUILDING IS EQUIPPED WITH A FIRE ALARM BY OTHERS.
- (5) HOOD LIGHTS TURN OFF IF REQUIRED BY AHJ BY OTHERS.
- (6) REMOTE PULL STATION LOCATED 10' TO 20' FROM HOOD & 48" FROM FINISHED FLOOR
- (7) HVAC SYSTEM SHUTS DOWN WHEN FIRE SYSTEM IS ACTIVATED, IF REQUIRED BY AHJ BY OTHERS.
- (8) CLASS "K" FIRE EXTINGUISHER LOCATED NOT MORE THAN 30' FROM HOOD

Parrish Fire & Safety, Inc DRAWN RKW Scale N/A		 Benson, NC Fire Extinguishers Sales & Service 919-894-8495 •Emergency Lighting •Hydrolasting •Suppression Systems •Training
SHEET NO. FP1 of 1	DATE 05-27-2022	REV -