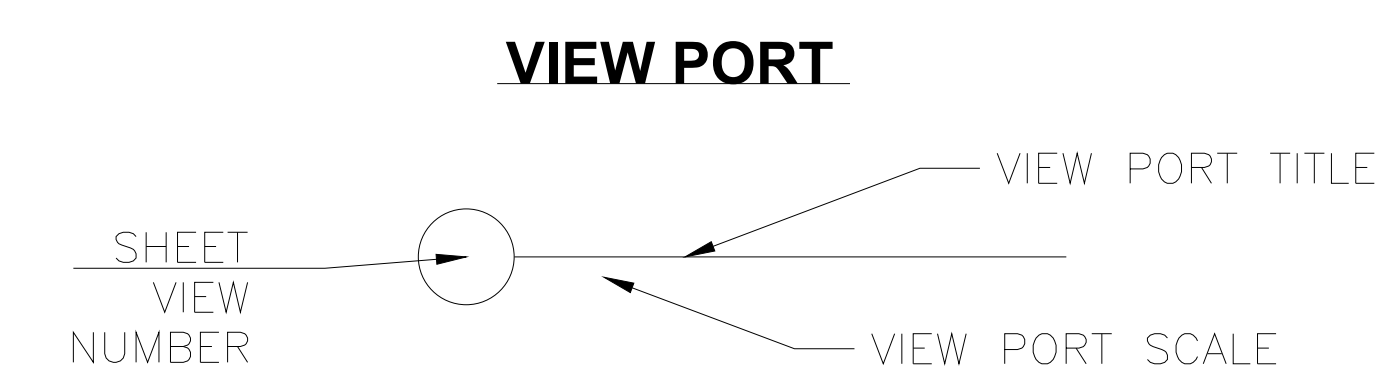
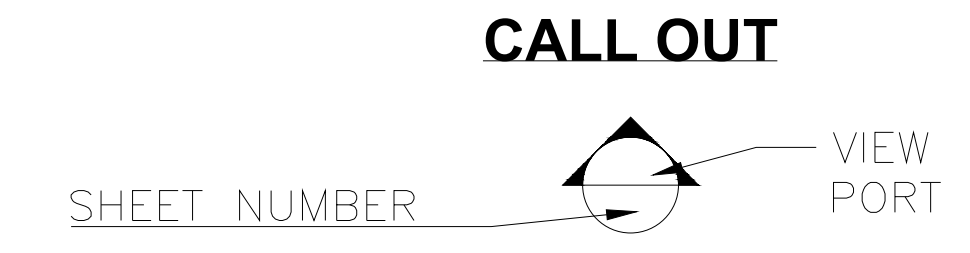
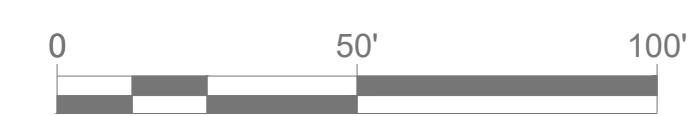
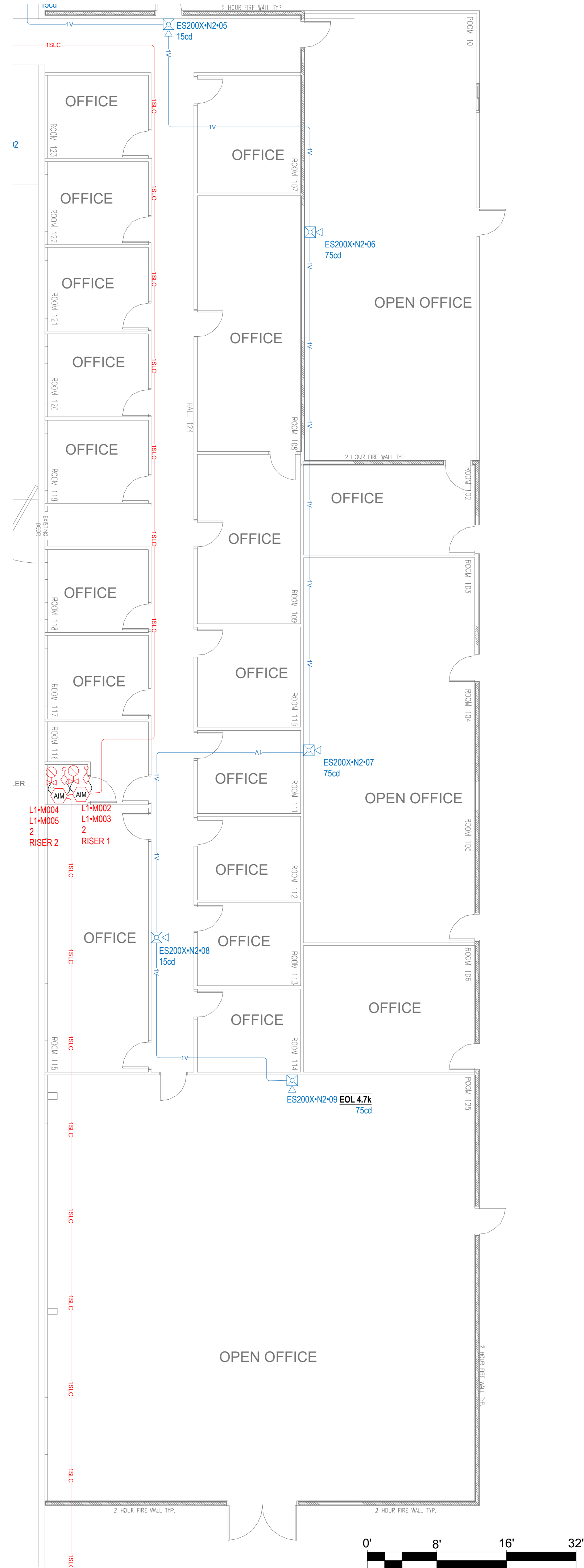


1 OVERALL LAYOUT
APPROXIMATE SCALE 1/32 INCH = 1 FOOT

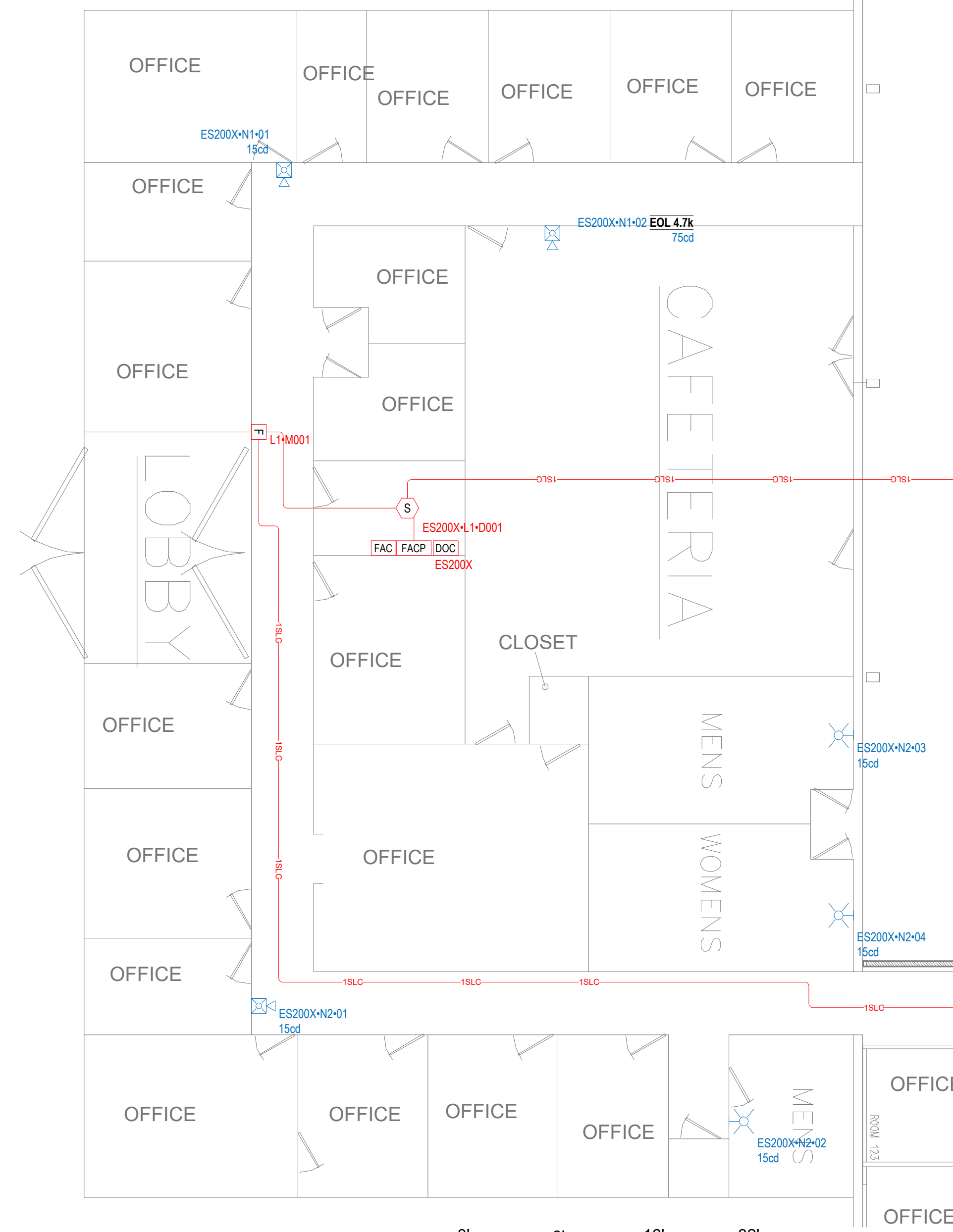


DEVICE LEGEND			
SYMBOL	QTY	MANUFACTURER	PART NO
[IDC]	1	ADI	06-SSU00685
[V]	7	GENERIC	VALVE TAMPER SUPERVISORY SWITCH
[FACP]	1	FIRELITE	ES-200X
[NAC]	1	FIRELITE	FL-PS6
[FAC]	1	DMP	DUALCOMF-LTE-V
[WFS]	7	GENERIC	WATERFLOW SWITCH
[F]	13	FIRELITE	BG-12LX
[AM]	2	FIRELITE	MDF-300
[FBO]	8	GENERIC	DUCT DETECTOR
[S]	1	FIRELITE	SD365 W/B300-6
[P2RL]	8	SYSTEM SENSOR	P2RL
[P2RL-P]	2	SYSTEM SENSOR	P2RL-P
[PC2RL]	8	SYSTEM SENSOR	PC2RL
[SCRL]	7	SYSTEM SENSOR	SCRL
[SRL]	5	SYSTEM SENSOR	SRL

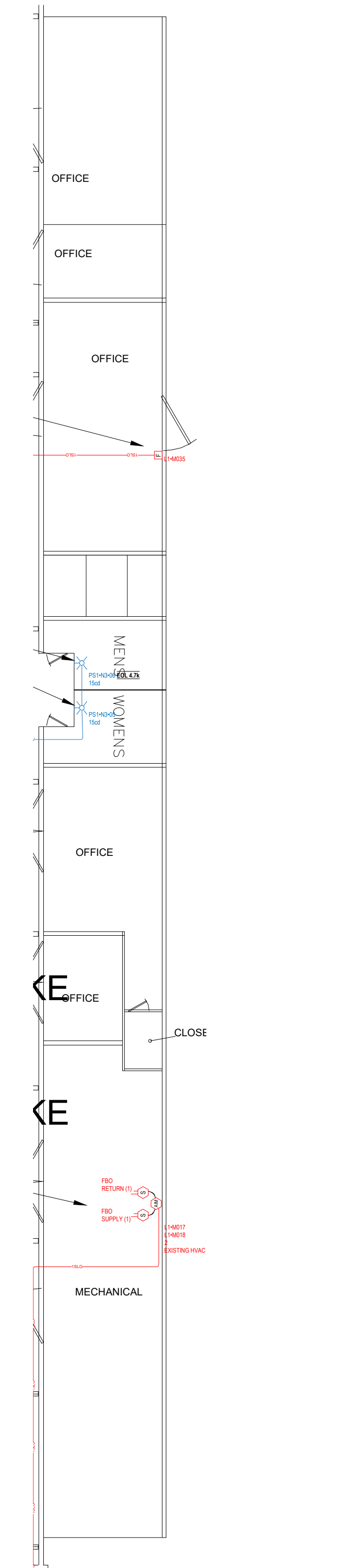
CABLE AND WIRE LEGEND			
LABEL	PART NO	AWG	DESCRIPTION
SLC	76179630	14	14 AWG 2 CONDUCTOR BARE COPPER, TWISTED, NON-SHIELDED PLENUM FIRE ALARM; FPLP
V	14/2 FPLP/R (NAC)	14	2 COND. SOLID COPPER FPLP/R ANALOG UNSHIELDED
Z	18/2 FPLP/R (IDC)	18	2 COND. SOLID COPPER FPLP/R ANALOG UNSHIELDED



1 OFFICES
APPROXIMATE SCALE 1/8 INCH = 1 FOOT



2 FRONT OFFICE
APPROXIMATE SCALE 1/8 INCH = 1 FOOT



3 REAR SECTION
APPROXIMATE SCALE 1/16 INCH = 1 FOOT



3001 ARMORY DR
SUITE 100
NASHVILLE TN
37203

BOON EDAN
402 MCKINNEY PKWY
LILLINGTON, NC 27546

DESIGNED BY:
CHRIS OWENS

SYSTEMS
APPLICATIONS
AND DESIGN

NICET IV FAS
#1333432






TN QA #1905

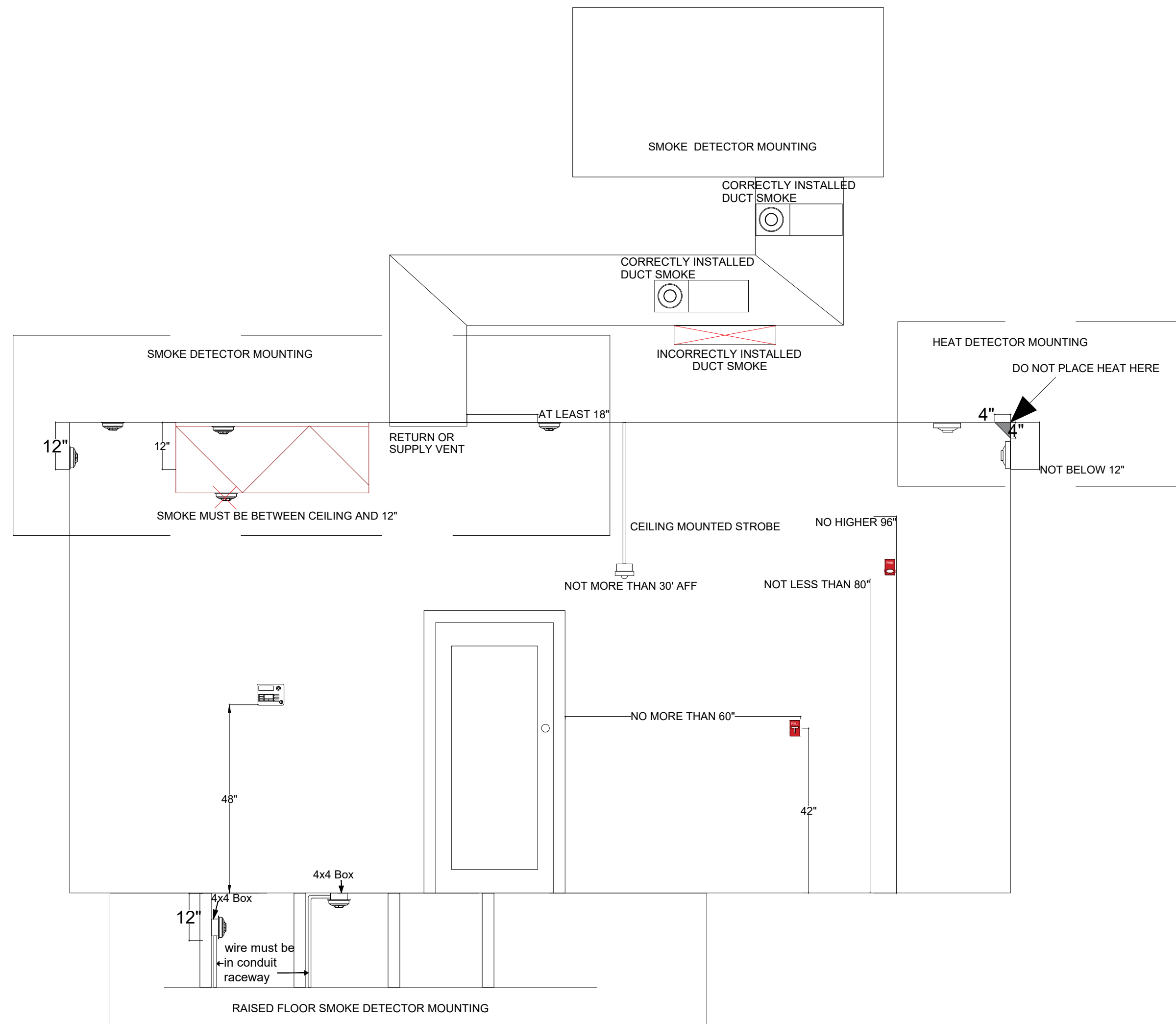
FCC GROL
0027673896

Revision	
1	2/15/2022

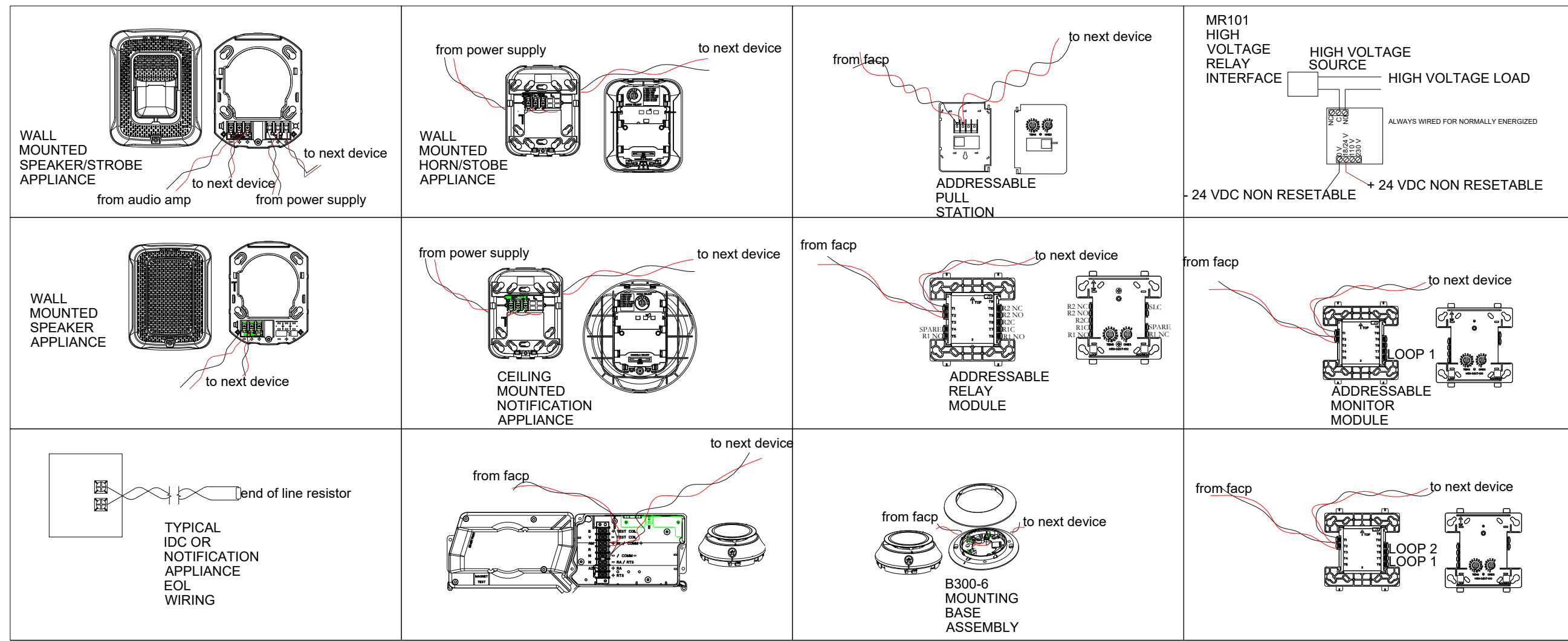
OCCUPANCY

B. S, F
SHEET
FA2

<p>ES-200X ES-200X Series ES-200X Series ES-200X Series</p> 	<p>SYSTEM SPECIFICATIONS</p> <p>ES-200X Series</p>	<p>SD25 Series SD25 Series SD25 Series SD25 Series</p> 	<p>SYSTEM SPECIFICATIONS</p> <p>SD25 Series</p>	<p>SYSTEM SPECIFICATIONS</p> <p>SD25 Series</p>
<p>SYSTEM SPECIFICATIONS</p> <p>ES-200X Series</p>	<p>SYSTEM SPECIFICATIONS</p> <p>ES-200X Series</p>	<p>CRP-200A1 CRP-200A1 Series CRP-200A1 Series CRP-200A1 Series</p> 	<p>SYSTEM SPECIFICATIONS</p> <p>CRP-200A1 Series</p>	<p>SYSTEM SPECIFICATIONS</p> <p>CRP-200A1 Series</p>
<p>FL-PRD2 & FL-PRD100 FL-PRD2 & FL-PRD100 Series FL-PRD2 & FL-PRD100 Series FL-PRD2 & FL-PRD100 Series</p> 	<p>SYSTEM SPECIFICATIONS</p> <p>FL-PRD2 & FL-PRD100 Series</p>	<p>MMF-200A1 Series MMF-200A1 Series MMF-200A1 Series MMF-200A1 Series</p> 	<p>SYSTEM SPECIFICATIONS</p> <p>MMF-200A1 Series</p>	<p>SYSTEM SPECIFICATIONS</p> <p>MMF-200A1 Series</p>
<p>80-18LX 80-18LX Series 80-18LX Series 80-18LX Series</p> 	<p>SYSTEM SPECIFICATIONS</p> <p>80-18LX Series</p>	<p>SYSTEM SPECIFICATIONS</p> <p>80-18LX Series</p>	<p>SYSTEM SPECIFICATIONS</p> <p>80-18LX Series</p>	<p>SYSTEM SPECIFICATIONS</p> <p>80-18LX Series</p>
<p>ANN-60 ANN-60 Series ANN-60 Series ANN-60 Series</p> 	<p>SYSTEM SPECIFICATIONS</p> <p>ANN-60 Series</p>	<p>SYSTEM SPECIFICATIONS</p> <p>ANN-60 Series</p>	<p>SYSTEM SPECIFICATIONS</p> <p>ANN-60 Series</p>	<p>SYSTEM SPECIFICATIONS</p> <p>ANN-60 Series</p>



TYPICAL DEVICE MOUNTING



TYPICAL DEVICE WIRING



3001 ARMORY DR
SUITE 100
NASHVILLE TN
37203

BOON EDAN
402 MCKINNEY PKWY
LILLINGTON, NC 27546

DESIGNED BY:
CHRIS OWENS

SYSTEMS
APPLICATIONS
AND DESIGN

NICET IV FAS
#1333432

TN QA #1905

FCC GROL
0027673896

Revision	
1	2/15/2022

OCCUPANCY

B. S, F
SHEET
FA3