

HOOD INFORMATION - JOB#4632367

HOOD NO	TAG	MODEL	MANUFACTURER	LENGTH	MAX COOKING TEMP	TYPE	APPLIANCE DUTY	DESIGN CFM/FT	TOTAL EXH CFM	EXHAUST PLENUM RISER(S)					TOTAL SUPPLY CFM	HOOD CONSTRUCTION	HOOD CONFIG		
										WIDTH	LENG	HEIGHT	DIA	CFM			VEL	SP	END TO END
1		4812 ESX-2-PSP-F	ECON-AIR	8' 0"	450 DEG	I	MEDIUM	228	1824		4'	16"	1824	1306	-0.360"	1368	430 SS WHERE EXPOSED	LEFT	ALONE
2		4812 ESX-2-PSP-F	ECON-AIR	8' 0"	450 DEG	I	MEDIUM	228	1824		4'	16"	1824	1306	-0.360"	1368	430 SS WHERE EXPOSED	RIGHT	ALONE

HOOD INFORMATION

HOOD NO	TAG	TYPE	FILTER(S)		EFFICIENCY @ 7 MICRONS	QTY	LIGHT(S)		WIRE GUARD	LOCATION	SIZE	UTILITY CABINET(S)			FIRE SYSTEM	HOOD HANGING WEIGHT
			QTY	HEIGHT			LENGTH	TYPE				WIRE GUARD	LOCATION	SIZE		
1		SS BAFFLE WITH HANDLES	5	16"	16"	30%	6	L55 SERIES E26	NO						YES	446 LBS
2		SS BAFFLE WITH HANDLES	5	16"	16"	30%	6	L55 SERIES E26	NO						YES	432 LBS

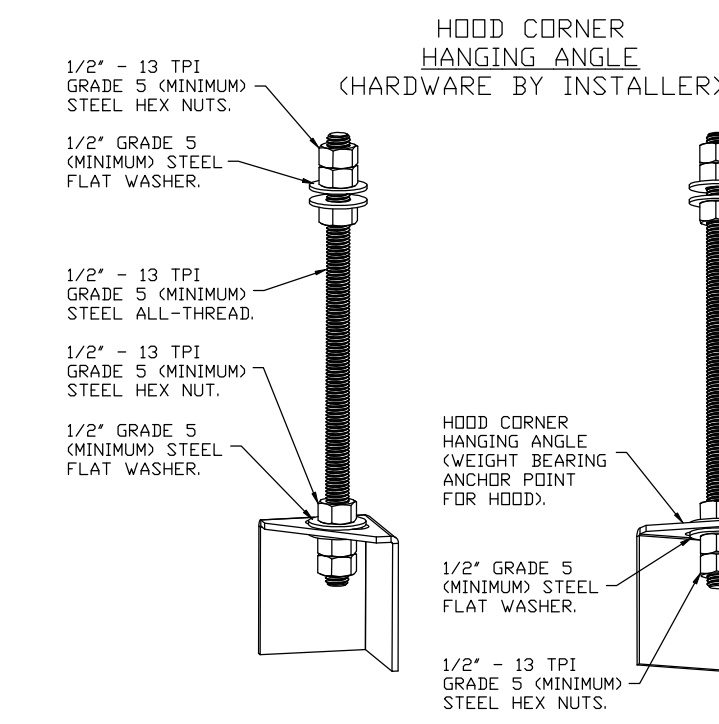
HOOD OPTIONS

HOOD NO	TAG	OPTION
1		BACKSPASH 68.00" HIGH X 193.00" LONG 430 SS VERTICAL. WRAPPER CHANNEL - FRONT, LEFT. LEFT QUARTER END PANEL 27" TOP WIDTH, 0" BOTTOM WIDTH, 27" HIGH 430 SS. RISER SENSOR INSTALL 6IN PLEN. WRAPPER CHANNEL - FRONT.
2		RIGHT END STANDOFF(FIN/SLP) 1" WIDE 48" LONG INSULATED. RISER SENSOR INSTALL 6IN PLEN. RIGHT WALL AS END PANEL.

PERFORATED SUPPLY PLENUM(S)

HOOD NO	TAG	POS	LENGTH	WIDTH	HEIGHT	TYPE	RISER(S)				
							WIDTH	LENG	DIA	CFM	
1		Front	96"	20"	6"	MUA	12"	28"		684	0.177"
							12"	28"		684	0.177"
2		Front	97"	20"	6"	MUA	12"	28"		684	0.177"
							12"	28"		684	0.177"

PATENT NUMBERS
 AC-PSP (UNITED STATES) - US PATENT 7963830 B2.
 AC-PSP WALL (CANADA) - CA PATENT 2820509.
 AC-PSP ISLAND (CANADA) - CA PATENT 2520330.



ASSEMBLY INSTRUCTIONS

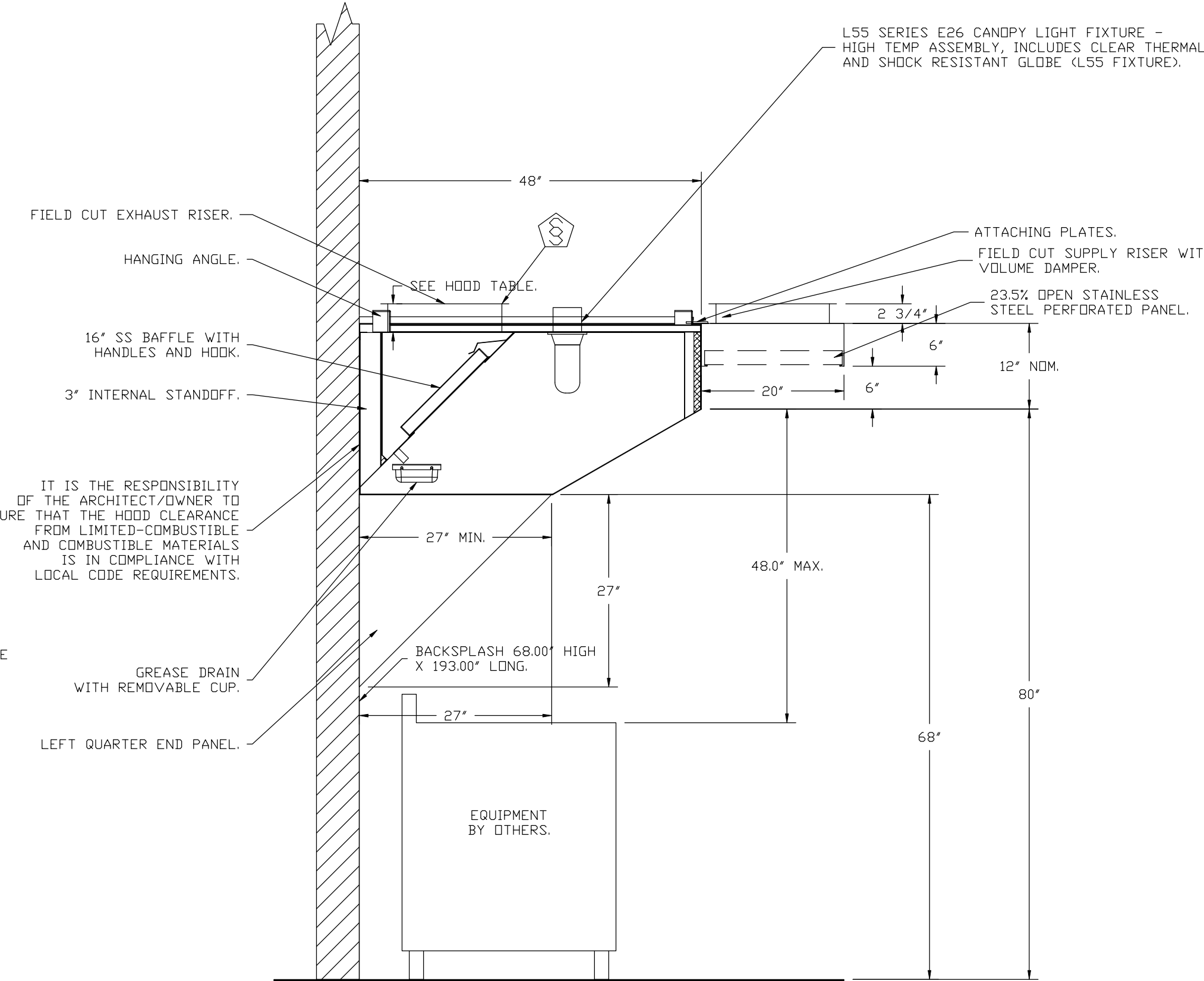
HANGING ANGLE MUST BE SUPPORTED WITH 1/2" - 13 TPI GRADE 5 (MINIMUM) ALL-THREAD. SANDWICH HANGING ANGLES AND CEILING ANCHOR POINTS WITH 1/2" GRADE 5 (MINIMUM) STEEL FLAT WASHERS AND 1/2" - 13 TPI GRADE 5 (MINIMUM) HEX NUTS AS SHOWN. MUST USE DOUBLED HEX NUT CONFIGURATION BENEATH HOOD HANGING ANGLES AND ABOVE CEILING ANCHORS. MAINTAIN 1/4" OF EXPOSED THREADS BENEATH BOTTOM HEX NUT. TORQUE ALL HEX NUTS TO 57 FT-LBS.

CAPTIVE-AIRE HOODS ARE BUILT IN COMPLIANCE WITH:

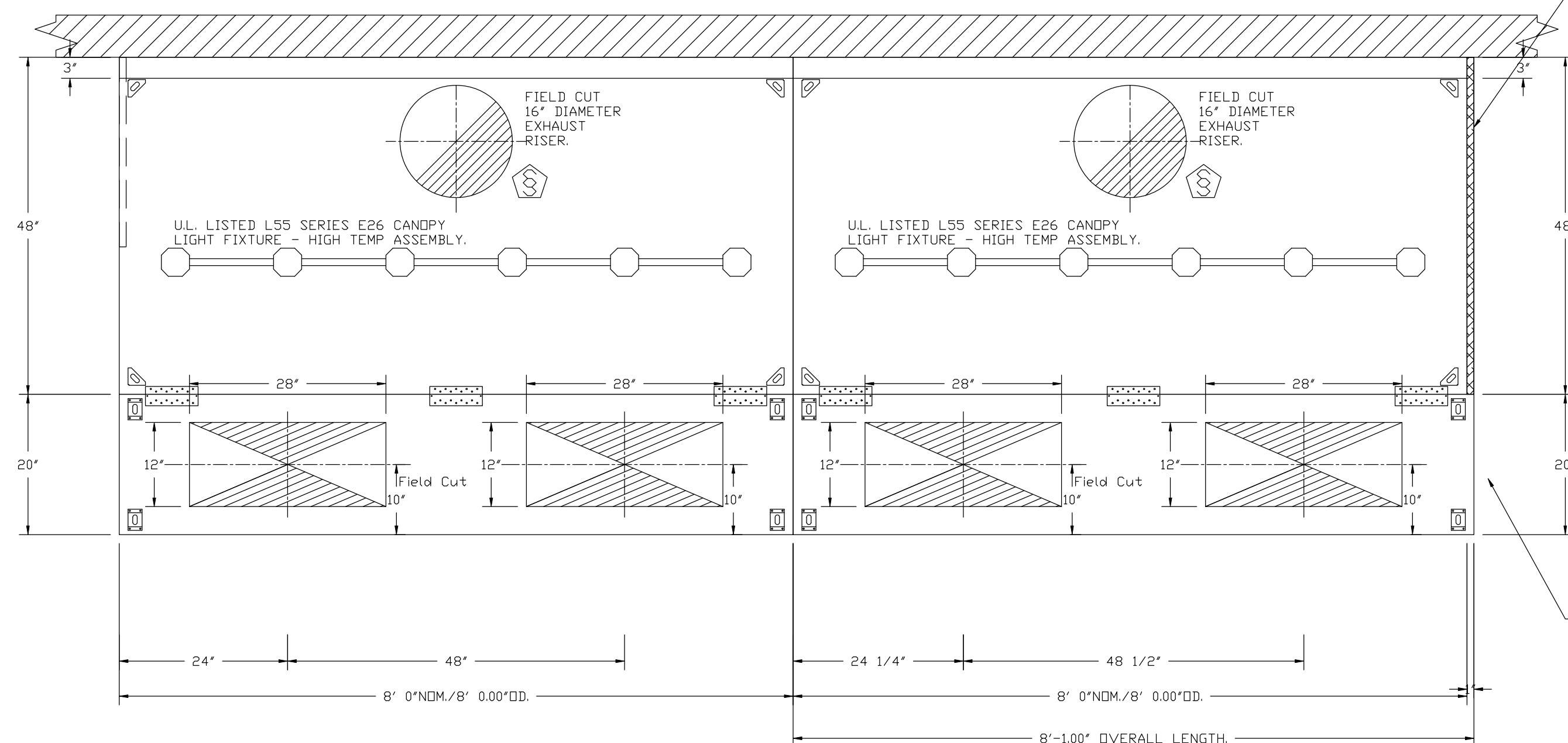
CAPTIVE-AIRE HOODS ARE BUILT IN COMPLIANCE WITH

NFPA #96
 NSF
 UL 710 & ULC710 STANDARDS
 E.T.L. LISTED 3054804-001

FOR QUESTIONS
 CONTACT: JOE WYLIE
 NORTH CAROLINA REGIONAL OFFICE
 PHONE: (919) 825-3566
 EMAIL: REG36@CAPTIVEAIRE.COM FAX: (919) 227-5917



SECTION VIEW - MODEL 4812ESX-2-PSP-F
 HOOD - #1



PLAN VIEW - HOOD #1
 8' 0.00" LONG 4812ESX-2-PSP-F

PLAN VIEW - HOOD #2
 8' 0.00" LONG 4812ESX-2-PSP-F

INSTALLER MUST CONFIRM HOOD IS INSTALLED SUCH THAT THE SPECIFIED WALL, ACTING AS AN END PANEL, IS MATED TIGHT TO THE CORRECT END OF HOOD TO ACHIEVE A REDUCED MINIMUM EXHAUST CFM LISTING. NON-COMPLIANCE WILL NULLIFY THE ETL LISTING, VOID THE MANUFACTURER'S WARRANTY, AND HOLD THE CONTRACTOR LIABLE FOR ANY AND ALL LOSSES, COSTS, AND EXPENSES RELATED TO THE NON-COMFORMANCE OF THE MANUFACTURER'S SPECIFIED INSTRUCTION. THE WALL ACTING AS AN END PANEL MUST EXTEND NO LESS THAN 20" FROM THE INTERSECTING WALL ON WHICH HOOD IS MOUNTED AND MUST EXTEND NO LESS THAN 20" UNDER BOTTOM OF HOOD TO BE ELIGIBLE FOR REDUCED MINIMUM EXHAUST CFM LISTING.

REVISIONS

DESCRIPTION	DATE:

CAPTIVE-AIRE

MI CANCUN-ANGIER 112420

DATE: 11/24/2020

DWG.#: 4628527

DRAWN BY: reg36

SCALE: 3/4" = 1'-0"

MASTER DRAWING

SHEET NO. 1

Eastern North Carolina
 4641 Paragon Park Rd., Raleigh, NC. 27616 PHONE: (919) 825-3566 FAX: (919) 227-5917 EMAIL: reg36@captivaire.com

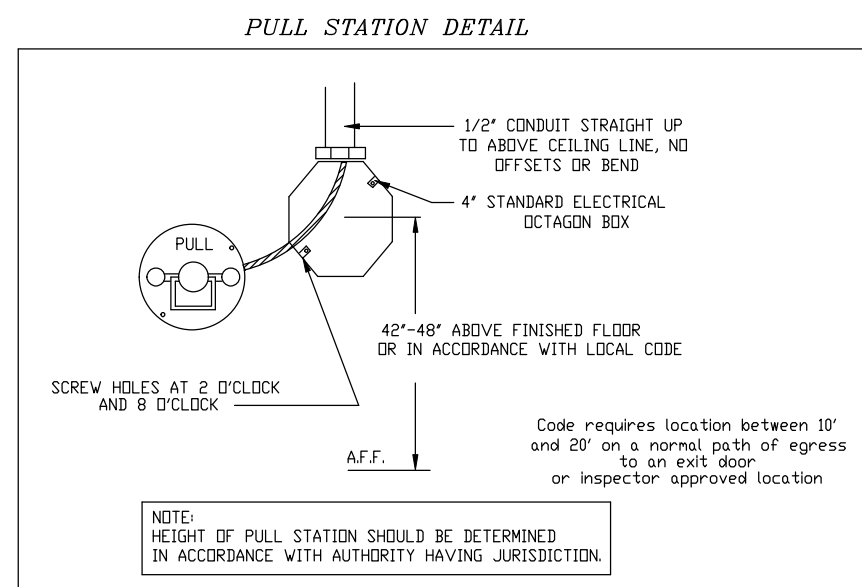
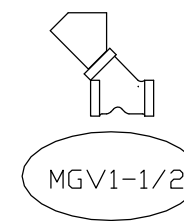
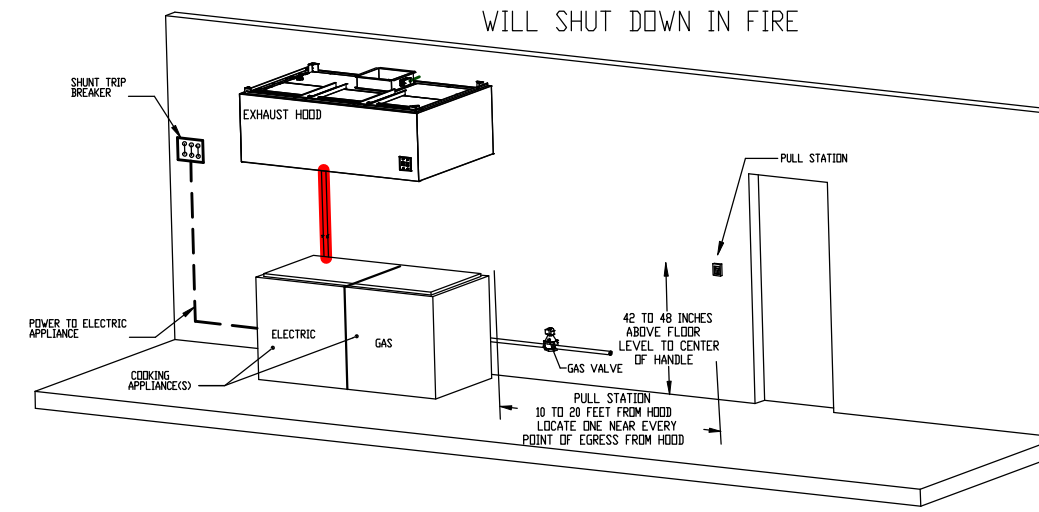
UL 300 HOOD FIRE SUPPRESSION SYSTEM

All Fire System Piping will be 3/8" schedule 40 black iron.

NC FIRE CODE 904.112

System Interconnection:
The Actuation of the fire extinguishing system shall automatically shut down the fuel or electrical power supply to the cooking equipment. The Fuel and electrical supply reset shall be manual.

FUEL SHUTOFF IN FIRE CONDITION
GAS AND ELECTRICAL TO COOKING APPLIANCES
WILL SHUT DOWN IN FIRE



FIRE SYSTEM OPERATION

- Kitchen hood shall be constructed and installed per NFPA 96.
- Hood Electrical Control Panel and Fire Control System shall shut down kitchen hood make up air fan upon activation of fire extinguishing system. Kitchen hood exhaust fan shall continue to operate or power on upon activation. The hood electrical panel and fire system will provide interlock for automatic operation of fire suppression system with:
 - Mechanical gas valve (installed by mechanical/plumbing contractor, if gas used)
 - Hood supply and exhaust fan (wiring by elec)
 - Remote manual pull station (by hood fire system distr)
 - Fire alarm system notification (if Bldg Fire Alarm present, by Fire alarm Contractor)
- See Hood details for drawings
- All exposed piping with fire suppression system shall be covered with a chrome sleeve.
- Mechanical contractor shall install conduit in wall for manual pull station. Pull Station shall be located at or near a means of egress from the cooking area.
- Fire suppression system shall be in accordance with UL 300.

Reviewed For Code Compliance By:
D. Banks Wallace
Chief Deputy Fire Marshal
03/11/2021 9:18:26 AM

NOTES

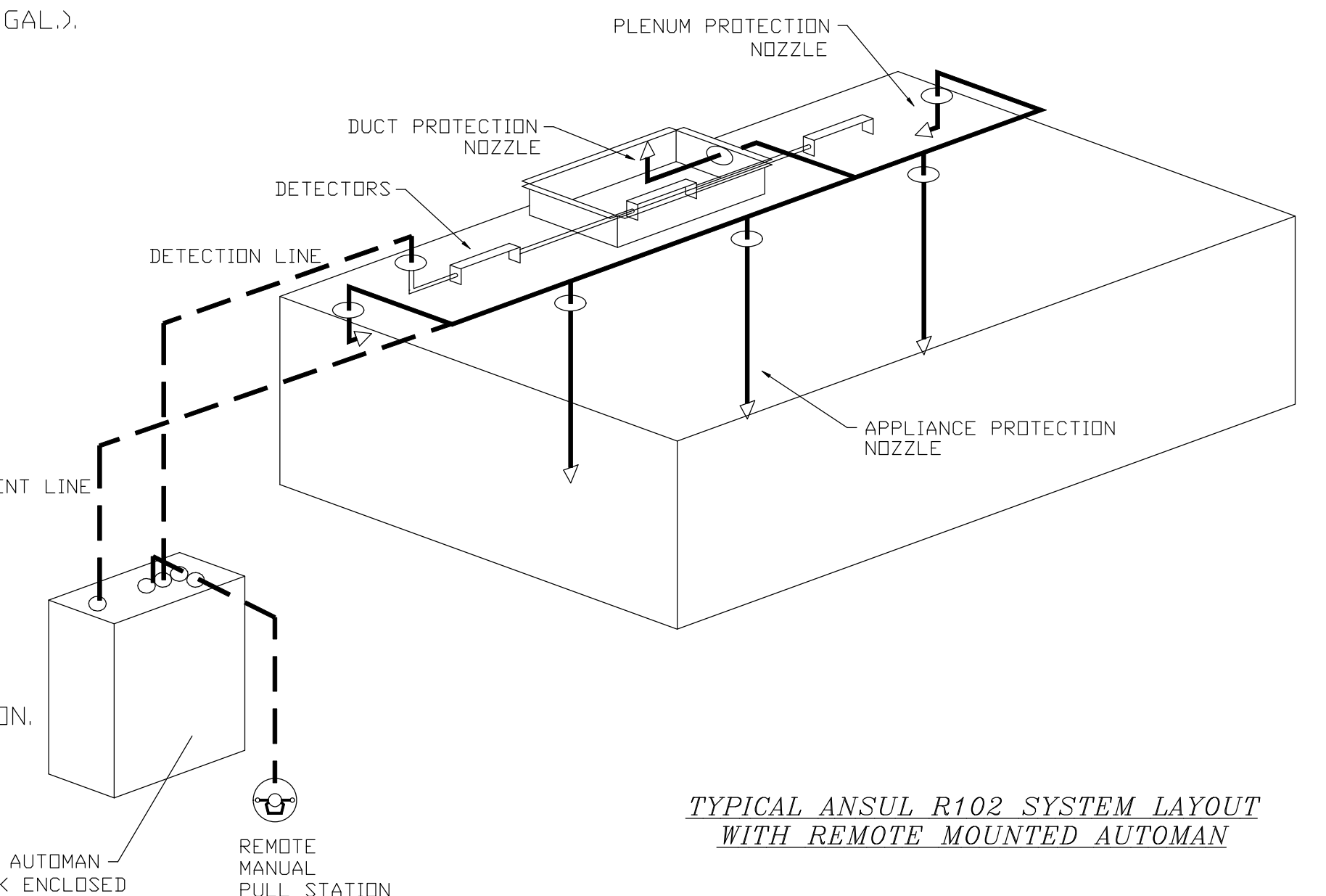
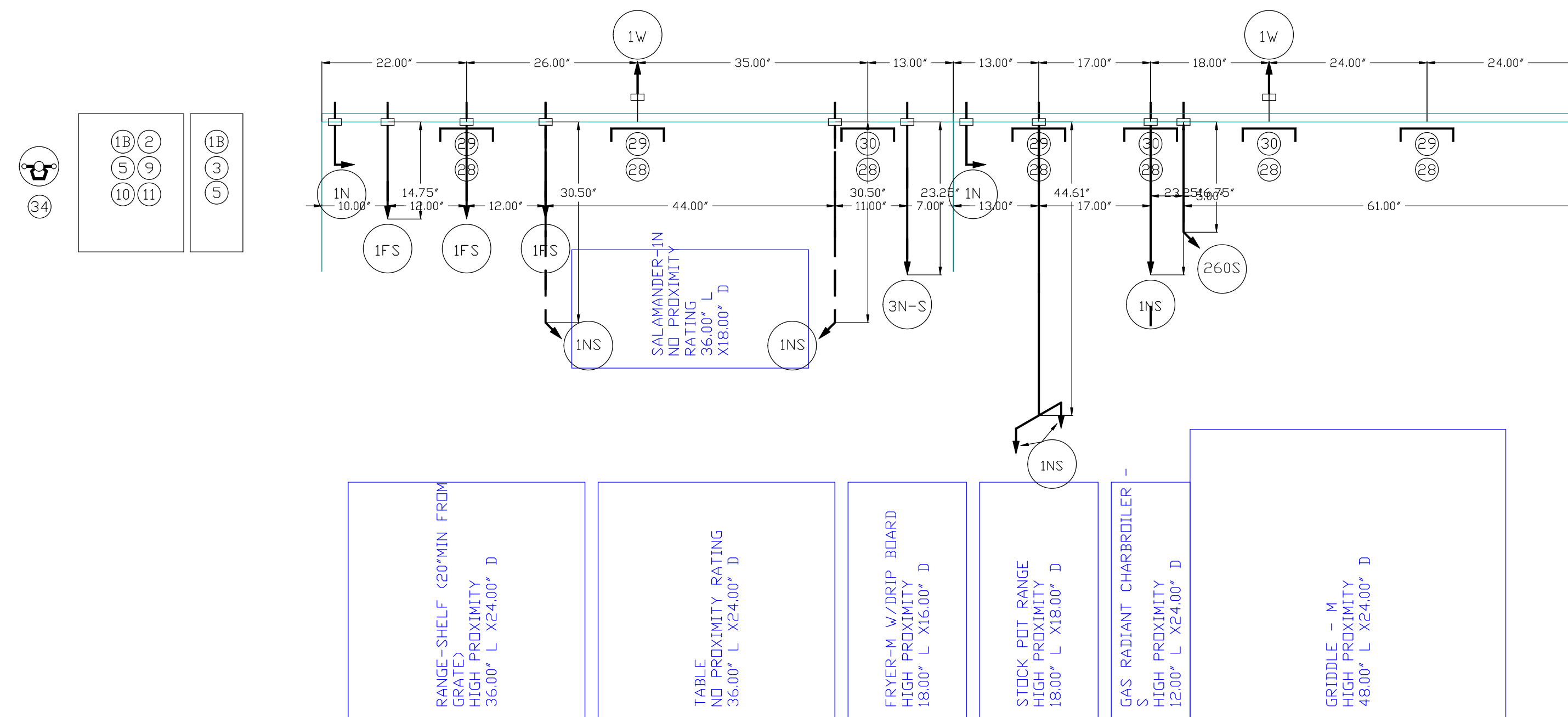
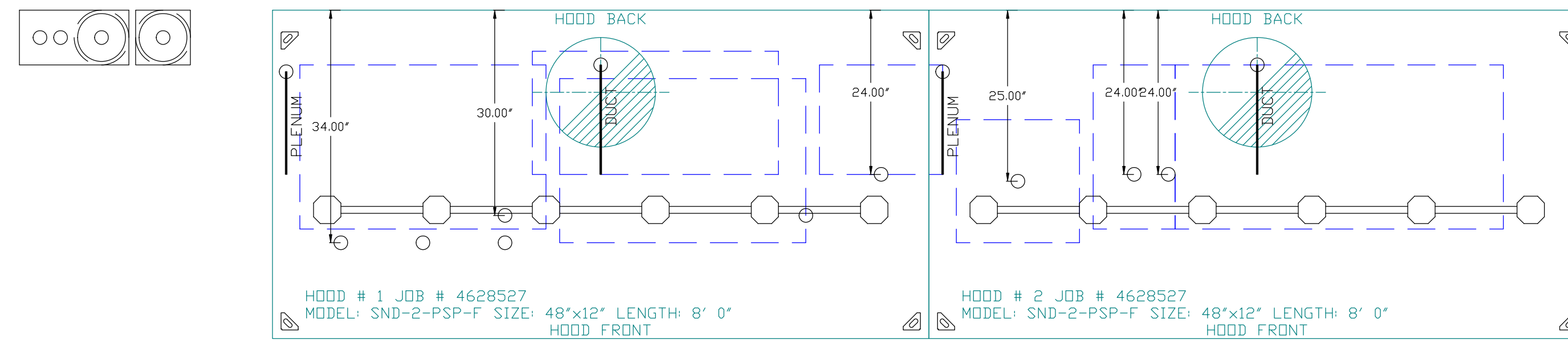
- FIELD PIPE DROPS AS SHOWN
- SLEEVING, ELBOWS, TEES, AND NOZZLES SUPPLIED BY CAS.
- RELOCATE NOZZLES IF FLOW PATTERN IS BLOCKED BY SHELIVING, SALAMANDERS, ETC.
- MAXIMUM 9 ELBOWS IN SUPPLY LINE.
- MINIMUM 72 INCHES OF AGENT LINE FROM TANK TO FIRST NOZZLE COVERING A RANGE, FRYER, OR WOK TO REFLECT GENERAL PIPING REQUIREMENTS.
- IF APPLICABLE, PRE-PIPED CHARBROILER DROPS ARE SHIPPED LOOSE.
- FACTORY PIPING EXTENDS A MAXIMUM OF 6" ABOVE THE TOP OF THE HOOD.
- APPLIANCE DIMENSIONS LISTED REPRESENT THE COOKING SURFACE SIZE, NOT THE OVERALL APPLIANCE SIZE.
- THIS FIRE SYSTEM COMPLIES WITH UL 300 REQUIREMENTS.

JOB #: 4628527.
JOB NAME: MI CANCUN-ANGIER 112420.

SYSTEM SIZE: ANSUL-3.0/3.0 TOTAL FP REQUIRED: 17.
HOOD # 1 8' 0.00" LONG x 48" WIDE x 12" HIGH.
RISER # 1 SIZE: 16" DIA.
HOOD # 1 METAL BLOW-OFF CAPS INCLUDED.
HOOD # 2 8' 0.00" LONG x 48" WIDE x 12" HIGH.
RISER # 1 SIZE: 16" DIA.
HOOD # 2 METAL BLOW-OFF CAPS INCLUDED.

LEGEND - WALL MOUNTED ANSUL SYSTEM

- 1A 1.5 GALLON TANK.
- 1B 3.0 GALLON TANK.
- 2 AUTOMAN RELEASE.
- 3 3 GALLON TANK ENCLOSURE.
- 3A 6 GALLON TANK ENCLOSURE.
- 4 REGULATED ACTUATOR.
- 5 ANSULEX LIQUID AGENT (3 GAL.).
- 6 ANSULEX LIQUID AGENT (1.5 GAL.).
- 7 CARTRIDGE (101-20).
- 8 CARTRIDGE (101-10).
- 9 CARTRIDGE (101-30).
- 9A CARTRIDGE (LT-A-101-30).
- 9B DOUBLE TANK CARTRIDGE.
- 10 TEST LINK.
- 11 DOUBLE MICROSWITCH.
- 2W DUCT NOZZLE (419337).
- 1W NOZZLE ASSEMBLY (419336).
- 1F NOZZLE ASSEMBLY (419333).
- 1N NOZZLE ASSEMBLY (419335).
- 1/2N NOZZLE ASSEMBLY (419334).
- 3N NOZZLE ASSEMBLY (419338).
- 245 NOZZLE ASSEMBLY (419340).
- 230 NOZZLE ASSEMBLY (419339).
- 2120 NOZZLE ASSEMBLY (419343).
- 290 NOZZLE ASSEMBLY (419342).
- 260 NOZZLE ASSEMBLY (419341).
- 28 DETECTOR BRACKET.
- 29 LOW TEMP FUSIBLE LINK.
- 30 HIGH TEMP FUSIBLE LINK.
- MGV MECHANICAL GAS VALVE.
- EGV ELECTRICAL GAS VALVE.
- 34 REMOTE MANUAL PULL STATION.
- S SWIVEL ADAPTOR.



TYPICAL ANSUL R102 SYSTEM LAYOUT WITH REMOTE MOUNTED AUTOMAN

EXHAUST FAN INFORMATION - JOB#4632367

FAN UNIT NO	TAG	QTY	FAN UNIT MODEL #	MANUFACTURER	CFM	ESP	RPM	MOTOR ENCL	HP	BHP	φ	VOLT	FLA	DISCHARGE VELOCITY	WEIGHT (LBS)	SONES
1	EXH1	1	DU85HFA	CAPTIVEAIRE	1824	0.800	1298	TEAD-ECM	1.000	0.3910	1	115	11.6	577 FPM	92	14.4
2	EXH2	1	DU85HFA	CAPTIVEAIRE	1824	0.800	1298	TEAD-ECM	1.000	0.3910	1	115	11.6	577 FPM	92	14.4

MUA FAN INFORMATION - JOB#4632367

FAN UNIT NO	TAG	QTY	FAN UNIT MODEL #	BLOWER	HOUSING	MIN CFM	DESIGN CFM	ESP	RPM	MOTOR ENCL	HP	BHP	φ	VOLT	FLA	MCA	MDCP	WEIGHT (LBS)	SONES
3	MUA-1	1	A2-G12	G12	A2	1500	2736	0.500	680	DDP	1.000	0.5980	1	115	8.1	10.2A	15A	324	16.4

FAN OPTIONS

FAN UNIT NO	TAG	QTY	DESCRIPTION
1	EXH1	1	GREASE BOX.
		1	ECM WIRING PACKAGE - MANUAL DR 0-10VDC REFERENCE SPEED CONTROL (TELCO MOTOR), CCW ROTATION.
2	EXH2	1	GREASE BOX.
		1	ECM WIRING PACKAGE - MANUAL DR 0-10VDC REFERENCE SPEED CONTROL (TELCO MOTOR), CCW ROTATION.
3	MUA-1	1	GRAVITY BACKDRAFT DAMPER FOR SIZE 2 HOUSING.

FAN ACCESSORIES

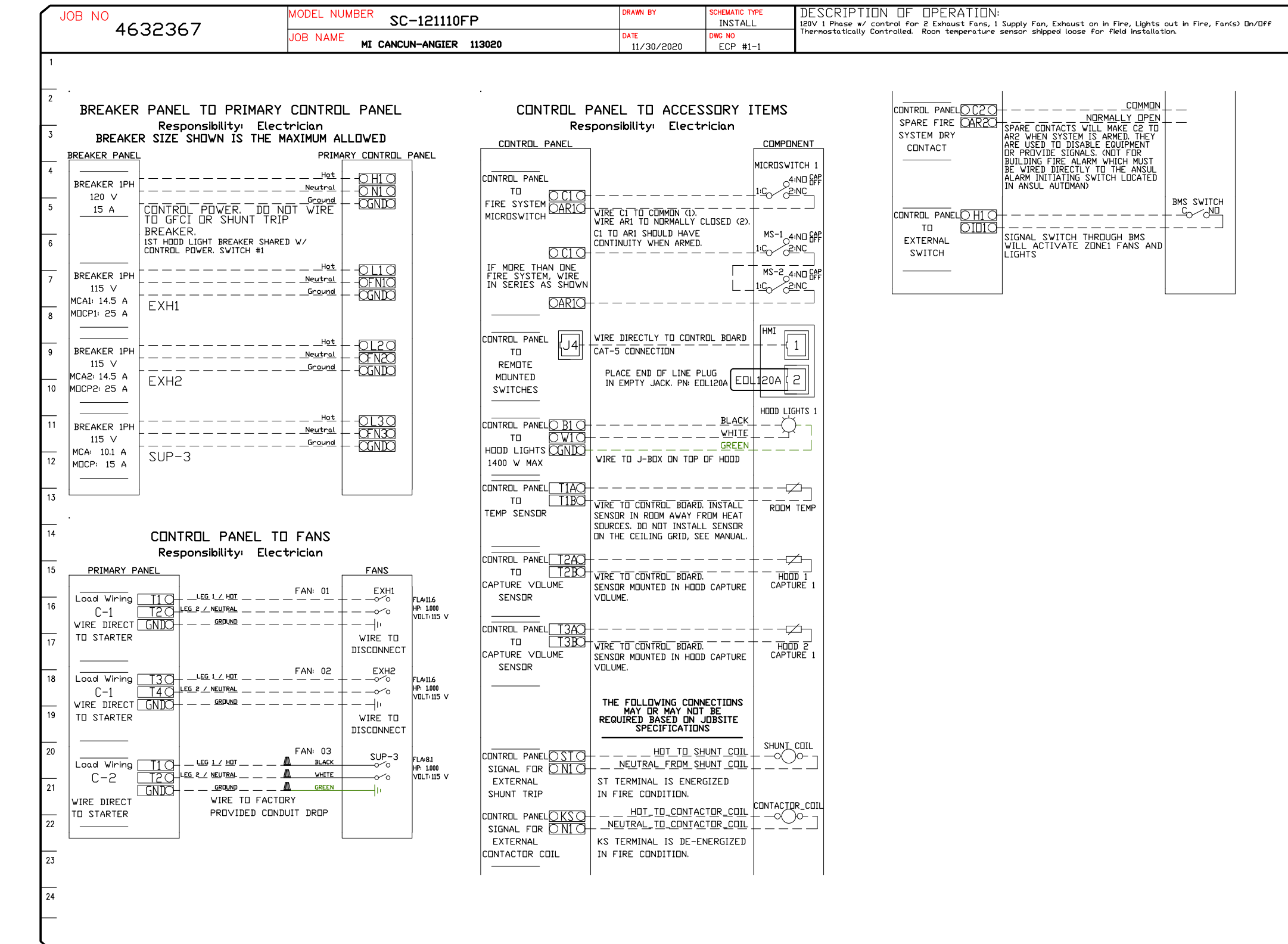
FAN UNIT NO	TAG	EXHAUST				SUPPLY			
		GREASE CUP	GRAVITY DAMPER	WALL MOUNT	SIDE DISCHARGE	GRAVITY DAMPER	MOTORIZED DAMPER	WALL MOUNT	
1	EXH1	YES							
2	EXH2	YES							
3	MUA-1				YES	YES			

CURB ASSEMBLIES

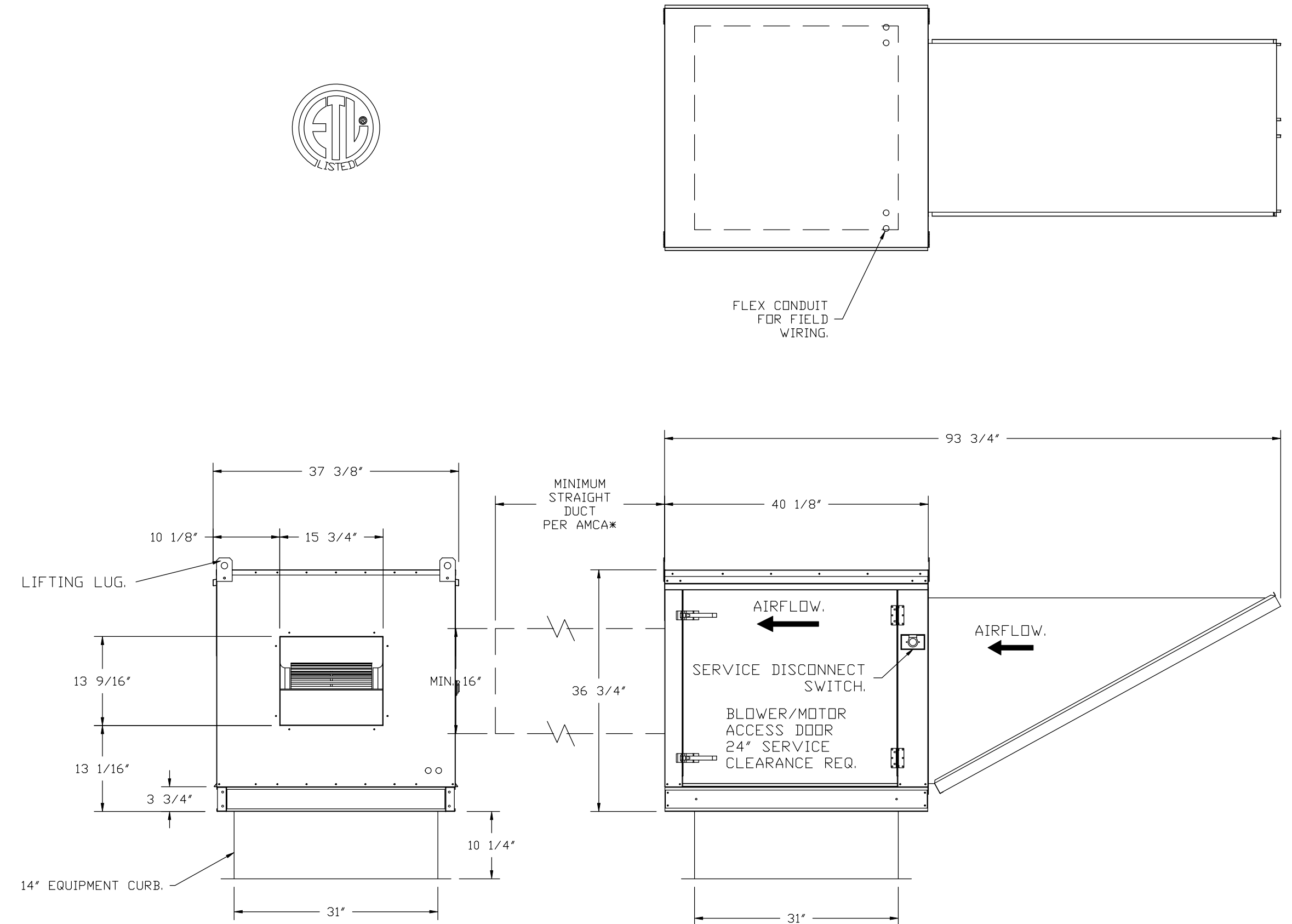
NO	ON FAN	TAG	WEIGHT	ITEM	SIZE
1	# 1	EXH1	41 LBS	CURB	23.000"W X 23.000"L X 22.000"H VENTED HINGED.
2	# 2	EXH2	41 LBS	CURB	23.000"W X 23.000"L X 22.000"H VENTED HINGED.
3	# 3	MUA-1	42 LBS	CURB	31.000"W X 31.000"L X 14.000"H

ELECTRICAL PACKAGE - JOB#4632367

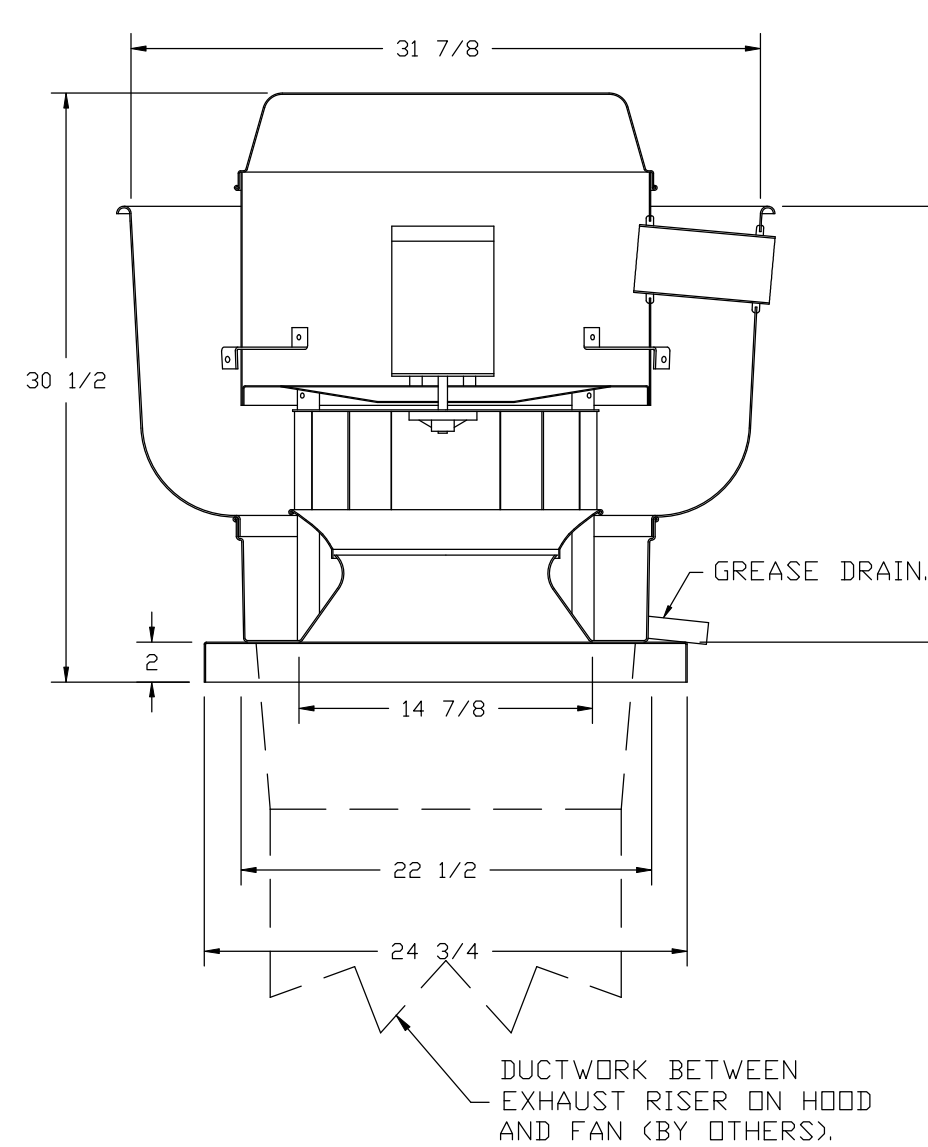
NO	TAG	PACKAGE #	LOCATION	SWITCHES		OPTION	FANS CONTROLLED																	
				LOCATION	QUANTITY		FAN TAG	TYPE	φ	HP	VOLT	FLA												
1		SC-121110FP	WALL MOUNT IN SS BOX	01 - FACE MOUNT LEFT SIDE OF HOOD	1 LIGHT	SMART CONTROLS THERMOSTATIC CONTROL	EXH1	EXHAUST	1	1.000	115	11.6	EXH2	EXHAUST	1	1.000	115	11.6	MUA-1	SUPPLY	1	1.000	115	8.1



- FAN #3 A2-G12 - SUPPLY FAN (MUA-1)
 1. UNTEMPERED SUPPLY UNIT WITH 12" BLOWER IN SIZE #2 HOUSING.
 2. INTAKE HOOD WITH EZ FILTERS.
 3. SIDE DISCHARGE - AIR FLOW RIGHT -> LEFT.
 4. GRAVITY BACK DRAFT DAMPER 22" X 24" , STANDARD GALVANIZED CONSTRUCTION, 1 1/4" REAR FLANGE, FOR SIZE 2 UNTEMPERED FAN HOUSING (S182).
- *NOTE: SUPPLY DUCT MUST BE INSTALLED TO MEET SMACNA STANDARDS. A MINIMUM STRAIGHT DUCT LENGTH MUST BE MAINTAINED DOWNSTREAM OF UNIT DISCHARGE AS OUTLINED IN AMCA PUBLICATION 201. WHEN USING RECTANGULAR DUCTWORK, ELBOWS MUST BE RADIUS THROAT, RADIUS BACK WITH TURNING VANES. FLEXIBLE DUCTWORK AND SQUARE THROAT/SQUARE BACK ELBOWS SHOULD NOT BE USED. ANY TRANSITION AND/OR TURNS IN THE DUCTWORK WILL CAUSE SYSTEM EFFECT. SYSTEM EFFECT WILL DRASTICALLY INCREASE STATIC PRESSURE AND REDUCE AIRFLOW. DO NOT RELY ON UNIT TO SUPPORT DUCT IN ANY WAY. FAILURE TO PROPERLY SIZE DUCTWORK MAY CAUSE SYSTEM EFFECTS AND REDUCE PERFORMANCE OF THE EQUIPMENT. SUGGESTED STRAIGHT DUCT SIZE IS 16" X 16".



FANS #1 (EXH1), #2 (EXH2) - DU85HFA EXHAUST FAN



FEATURES:

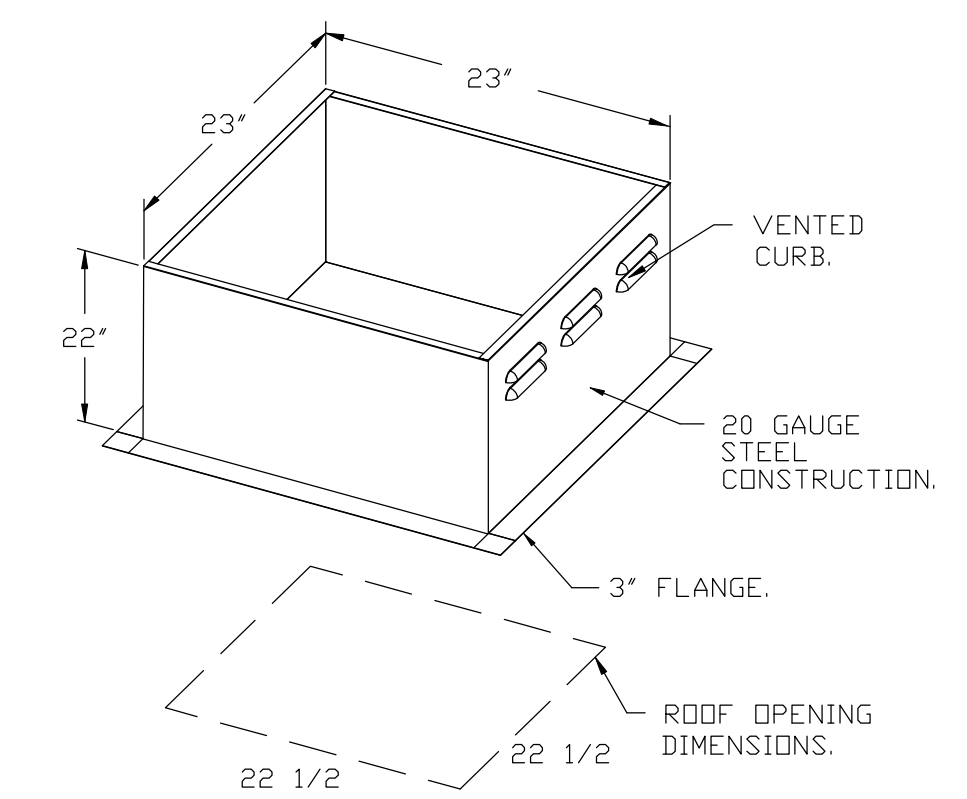
- DIRECT DRIVE CONSTRUCTION (NO BELTS/PULLEYS).
- ROOF MOUNTED FANS.
- RESTAURANT MODEL.
- UL705 AND UL762 AND ULC-S645
- VARIABLE SPEED CONTROL.
- INTERNAL WIRING.
- THERMAL OVERLOAD PROTECTION (SINGLE PHASE).
- HIGH HEAT OPERATION 300°F (149°C).
- GREASE CLASSIFICATION TESTING.
- NEMA 3R SAFETY DISCONNECT SWITCH.

NORMAL TEMPERATURE TEST
 EXHAUST FAN MUST OPERATE CONTINUOUSLY WHILE EXHAUSTING AIR AT 300°F (149°C) UNTIL ALL FAN PARTS HAVE REACHED THERMAL EQUILIBRIUM, AND WITHOUT ANY DETERIORATING EFFECTS TO THE FAN WHICH WOULD CAUSE UNSAFE OPERATION.

ABNORMAL FLARE-UP TEST
 EXHAUST FAN MUST OPERATE CONTINUOUSLY WHILE EXHAUSTING BURNING GREASE VAPORS AT 600°F (316°C) FOR A PERIOD OF 15 MINUTES WITHOUT THE FAN BECOMING DAMAGED TO ANY EXTENT THAT COULD CAUSE AN UNSAFE CONDITION.

OPTIONS

- GREASE BOX.
- ECM WIRING PACKAGE - PWM SIGNAL FROM ECPM03 PREWIRE (TELCO MOTOR), CCW ROTATION.



PITCHED CURBS ARE AVAILABLE FOR PITCHED ROOFS.

SPECIFY PITCH:
 EXAMPLE: 7/12 PITCH = 30° SLOPE.