

Important: In locations subject to freezing conditions, it is the owner's responsibility to provide adequate heat throughout wet pipe sprinkler system areas and enclosures for dry-pipe, deluge and other types of valves controlling water supplies to sprinkler systems

By Others	By CSCO	Item
X		City Water Connection Valve House or Pit
X		Connection to Plant Air
N/A		Air Compressor
N/A		Air Maintenance Device
X		Electric Alarm
X		Electric Wire
X		Hose Cabinet and Equipment
X		Painting
X		Sleeves
X		Cutting Hole and Patch
N/A		Trench and Backfill
N/A		Repaving
X		Underground Piping

This drawing and the information hereon is the property of Crawford Sprinkler Company of Raleigh, and may not be reproduced, altered or used in any form without consent from Crawford Sprinkler Company of Raleigh.

**Crawford**  
**SPRINKLER CO.**  
OF RALEIGH, INC.  
2725 S. SAUNDERS STREET - RALEIGH, NC 27603 • PO BOX 26207 - RALEIGH, NC 27611  
PHONE 919-828-8346 • FAX 919-839-8164

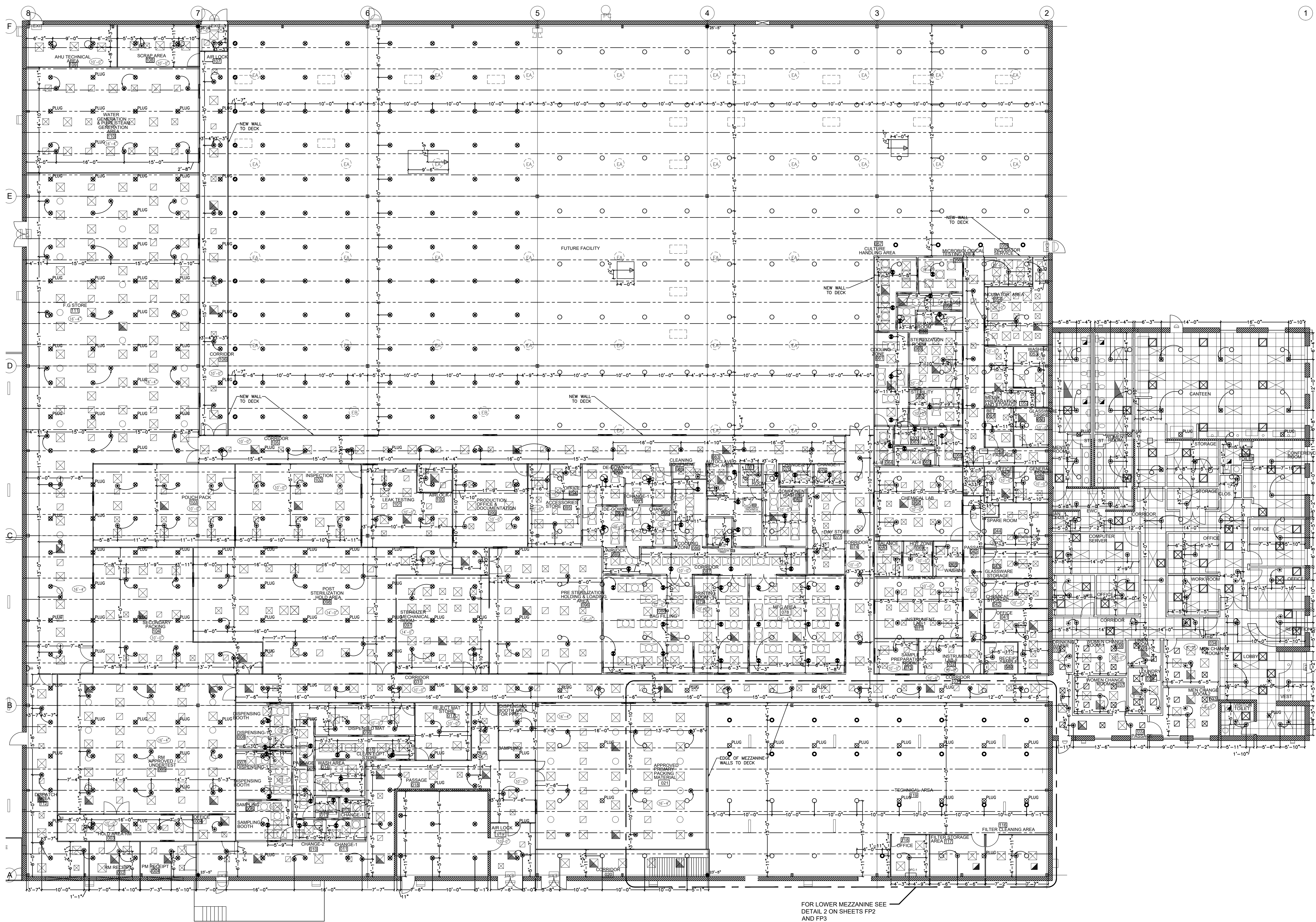
KRIGEN PHARMACEUTICALS  
CEILING PLAN  
800 EDWARDS BROTHERS DR.  
LILLINGTON, NORTH CAROLINA

UNDERWRITERS:  
INDEX NO.  
REVISIONS:

**DESIGN CRITERIA**

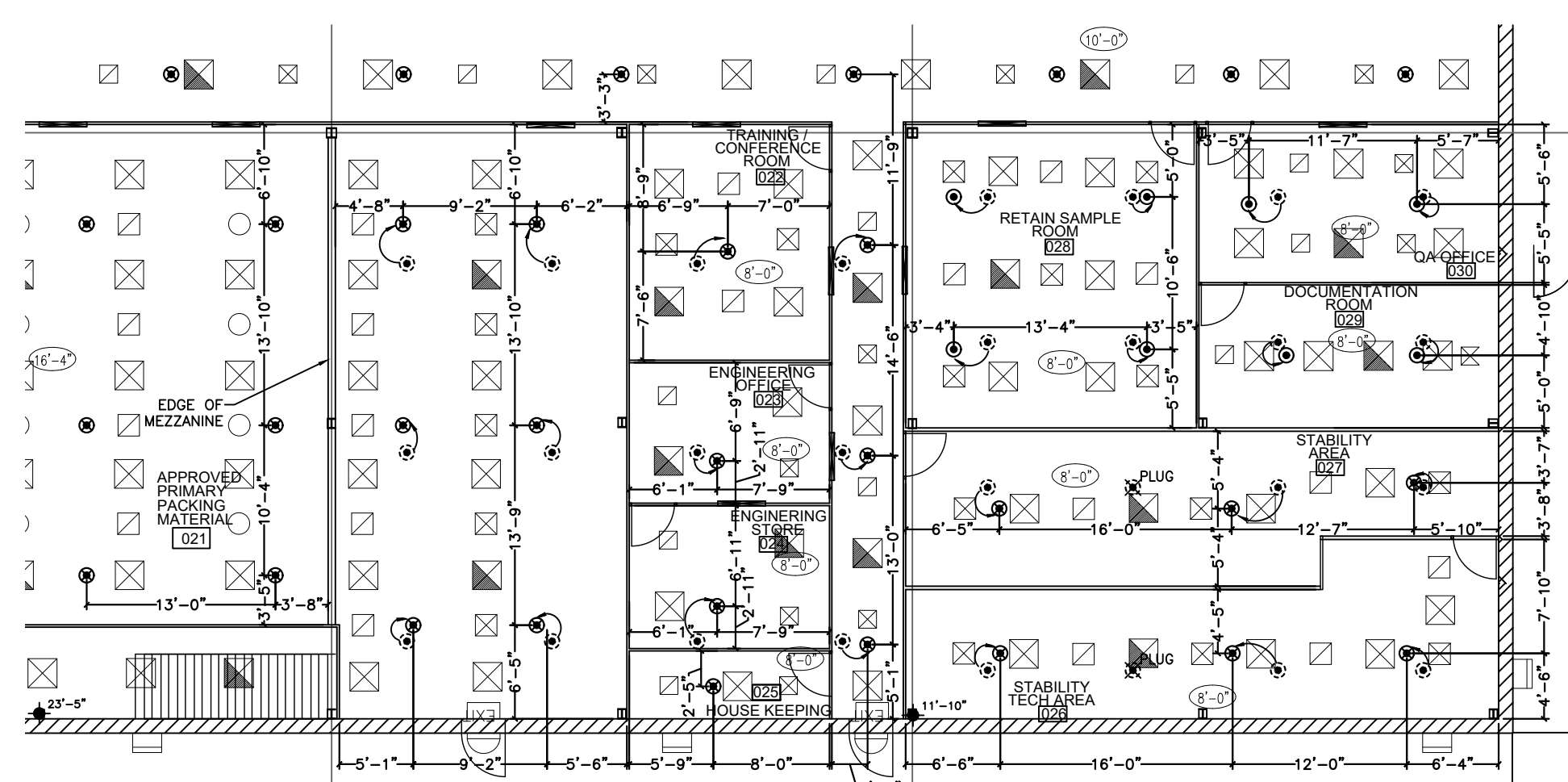
SYSTEM TYPE	WET
SYSTEM DESIGN	CALCULATED
DESIGN DENSITY	0.20 gpm/1500' d
MAX HEAD CVRG	276' w/l
HOSE ALLOWANCE	250' gpm
DRAWN BY: <i>EVJ</i>	DATE: 1/22/2021
CHECK BY:	DATE:
SCALE: AS NOTED	
CONTRACT NO: J213010	
FILE NO:	

DWG. NO: FP2 OF 3  
*R. Edwards*  
N.C. License No. 29772 FS Cls I



FOR LOWER MEZZANINE SEE  
DETAIL 2 ON SHEETS FP2  
AND FP3

1 CEILING PLAN  
3/32"=1'-0"



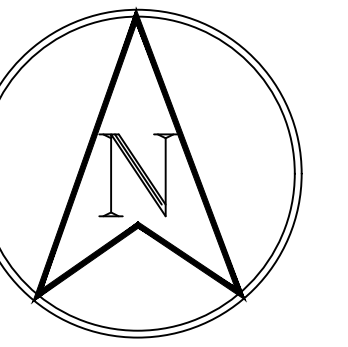
2 BELOW MEZZ. CEILING PLAN  
3/32"=1'-0"

**SYMBOLS:**

- (M) DENOTES A HYDRAULIC CALCULATION POINT OF REFERENCE
- DENOTES A HYDRAULIC REMOTE AREA
- DENOTES EXISTING SPRINKLER PIPE
- DENOTES NEW SPRINKLER PIPE
- DENOTES UNDERGROUND PIPE
- ▲ DENOTES THE RISER LOCATION
- DENOTES THE RUN-IN LOCATION

**HEAD LEGEND**

SYM	CNT	NAME	METAL	TEMP	K	NPT	MFG.	MODEL#	MIN SPACING	MAX SPACING	RESPONSE	ESCU
○	-	EXIST UPRIGHT	BRASS	200	5.60	1/2"	-	-	6'-0"	15'-0"	STANDARD RESP.	N/A
○	-	EXIST UPRIGHT	BRASS	286	5.60	3/4"	-	-	8'-0"	12'-0"	STANDARD RESP.	N/A
○	-	EXIST PEND	CHROME	165	5.60	1/2"	-	-	6'-0"	15'-0"	STANDARD RESP.	CHR REC
⊙	166	NEW EC PEND	CHROME	155	14.0	3/4"	VIKING	VK572	8'-0"	16'x16'	STANDARD RESP.	CHR REC
⊙	9	NEW EC PEND	CHROME	155	11.2	3/4"	VIKING	VK534	8'-0"	16'x16'	QUICK RESP.	CHR REC
⊙	111	NEW PEND	CHROME	155	5.60	1/2"	VIKING	VK3021	6'-0"	15'-0"	QUICK RESP.	CHR REC
⊙	63	NEW PEND	STN STL	155	5.60	1/2"	VIKING	VK339	6'-0"	15'-0"	QUICK RESP.	STAINLESS STL
⊙	16	NEW UPRIGHT	BRASS	200	5.60	1/2"	VIKING	VK100	6'-0"	15'-0"	STANDARD RESP.	N/A
⊙	12	NEW ELO UPRIGHT	BRASS	286	11.2	3/4"	VIKING	VK530	8'-0"	12'-0"	STANDARD RESP.	N/A
△	3	NEW HSW	BRASS	155	5.60	1/2"	VIKING	VK104	6'-0"	14'-0"	STANDARD RESP.	N/A



Important: In locations subject to freezing conditions, it is the owner's responsibility to provide adequate heat throughout wet pipe sprinkler system areas and enclosures for dry-pipe, deluge and other types of valves controlling water supplies to sprinkler systems

By Others	By CSCO	Item
X		City Water Connection
X		Valve House or Pit
N/A		Connection to Plant Air
N/A		Air Compressor
N/A		Air Maintenance Device
X		Electric Alarm
X		Electric Wire
X		Hose Cabinet and Equipment
X		Painting
X		Sleeves
X		Cutting Hole and Patch
N/A		Trench and Backfill
N/A		Re-paving
X		Underground Piping

This drawing and the information herein is the property of Crawford Sprinkler Company of Raleigh, and may not be reproduced, altered or used in any form without consent from Crawford Sprinkler Company of Raleigh.

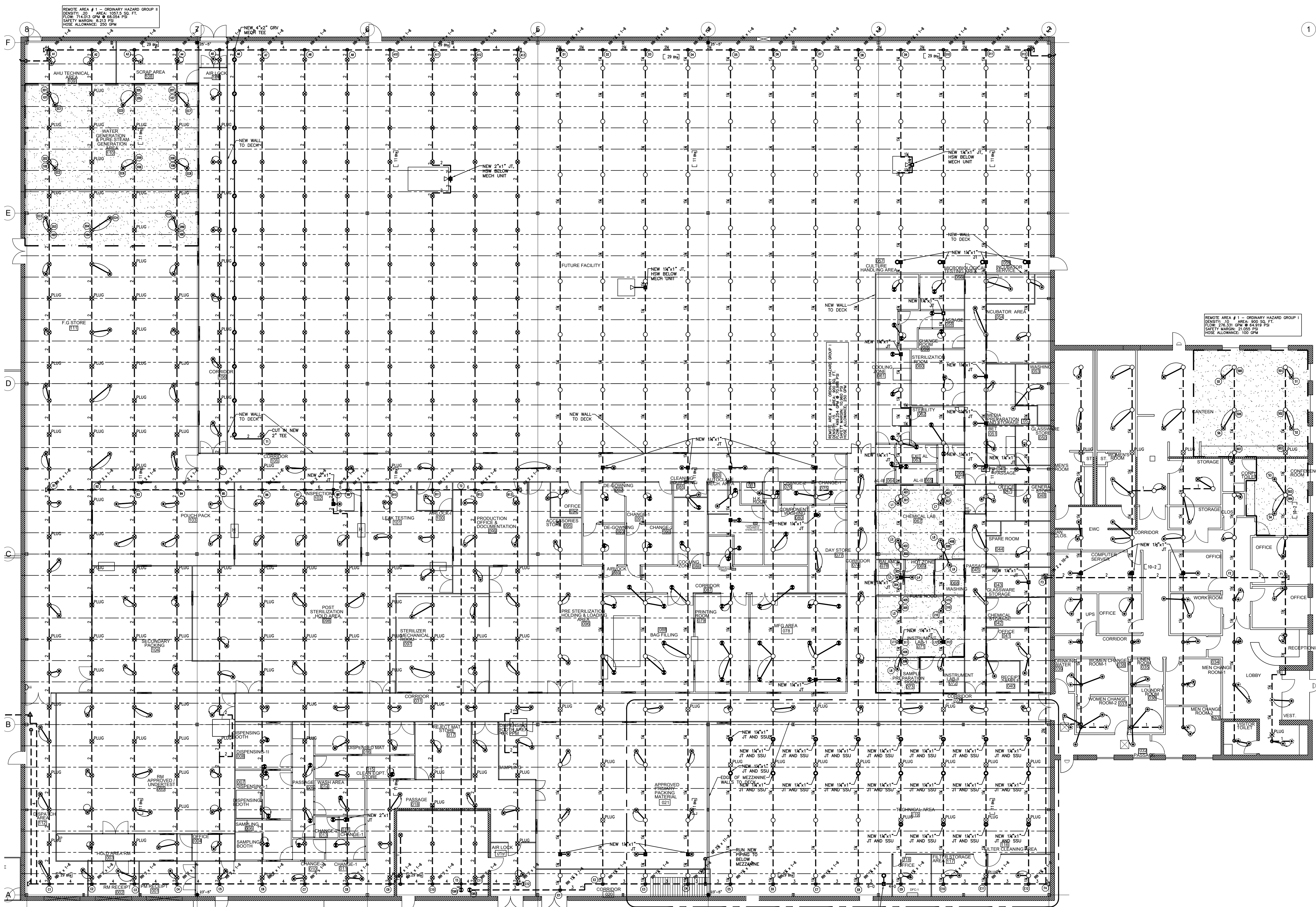
**Crawford**  
**SPRINKLER CO.**  
OF RALEIGH, INC.  
2725 S. SAUNDERS STREET - RALEIGH, NC 27603 • PO BOX 26207 - RALEIGH, NC 27611  
PHONE 919-828-8346 • FAX 919-839-8164

**KRIGEN PHARMACEUTICALS**  
**PIPING PLAN**  
**800 EDWARDS BROTHERS DR.**  
**LILLINGTON, NORTH CAROLINA**

UNDERWRITERS:  
INDEX NO.  
REVISIONS:

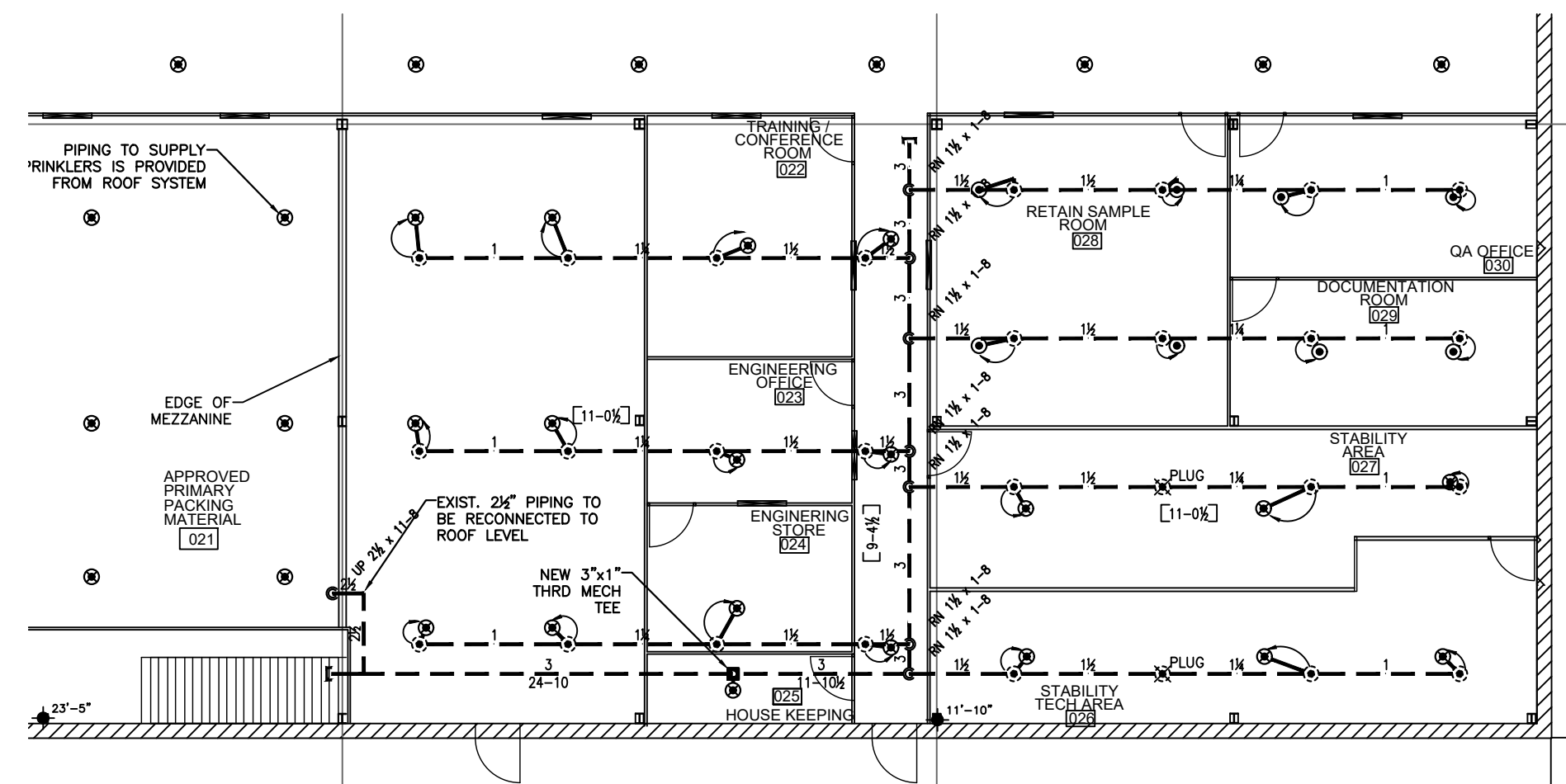
**DESIGN CRITERIA**

SYSTEM TYPE	WET
SYSTEM DESIGN	CALCULATED
DESIGN DENSITY	0.20 gpm/1500 sq ft
MAX HEAD CVRG	250 psi
HOSE ALLOWANCE	250 gpm
DRAWN BY:	EV3
CHECK BY:	DATE: 1/22/2021
SCALE:	AS NOTED
CONTRACT NO.:	21-3010
FILE NO.:	
DWG. NO.:	FP3 OF 3
	<i>Patricia Walker</i>
	N.C. License No. 29772 FS Cls I



FOR LOWER MEZZANINE SEE  
DETAIL 2 ON SHEETS FP2  
AND FP3

**1 PIPING PLAN**  
FP 3  
3/32"=1'-0"



**2 BELOW MEZZ. PIPING PLAN**  
FP 3  
3/32"=1'-0"

**SYMBOLS:**

- (M) DENOTES A HYDRAULIC CALCULATION POINT OF REFERENCE
- DENOTES A HYDRAULIC REMOTE AREA
- - - - DENOTES EXISTING SPRINKLER PIPE
- — — DENOTES NEW SPRINKLER PIPE
- — — DENOTES UNDERGROUND PIPE
- ▲ DENOTES THE RISER LOCATION
- DENOTES THE RUN-IN LOCATION

**HEAD LEGEND**

SYM	CNT	NAME	METAL	TEMP	K	NPT	MFG.	MODEL#	MIN SPACING	MAX SPACING	RESPONSE	ESCU
○	-	EXIST UPRIGHT	BRASS	200	5.60	1/2"	-	-	6'-0"	15'-0"	STANDARD RESP.	N/A
⊗	-	EXIST UPRIGHT	BRASS	286	5.60	3/4"	-	-	8'-0"	12'-0"	STANDARD RESP.	N/A
⊙	-	EXIST PEND	CHROME	165	5.60	1/2"	-	-	6'-0"	15'-0"	STANDARD RESP.	CHR REC
⊗	168	NEW EC PEND	CHROME	155	14.0	3/4"	VIKING	VK572	8'-0"	16'x16'	STANDARD RESP.	CHR REC
⊙	9	NEW EC PEND	CHROME	155	11.2	3/4"	VIKING	VK534	8'-0"	16'x16'	QUICK RESP.	CHR REC
⊙	111	NEW PEND	CHROME	155	5.60	1/2"	VIKING	VK3021	6'-0"	15'-0"	QUICK RESP.	CHR REC
●	63	NEW PEND	STN STL	155	5.60	1/2"	VIKING	VK339	6'-0"	15'-0"	QUICK RESP.	STAINLESS STL
○	16	NEW UPRIGHT	BRASS	200	5.60	1/2"	VIKING	VK100	6'-0"	15'-0"	STANDARD RESP.	N/A
○	12	NEW ELO UPRIGHT	BRASS	286	11.2	3/4"	VIKING	VK530	8'-0"	12'-0"	STANDARD RESP.	N/A
△	3	NEW HSW	BRASS	155	5.60	1/2"	VIKING	VK104	6'-0"	14'-0"	STANDARD RESP.	N/A