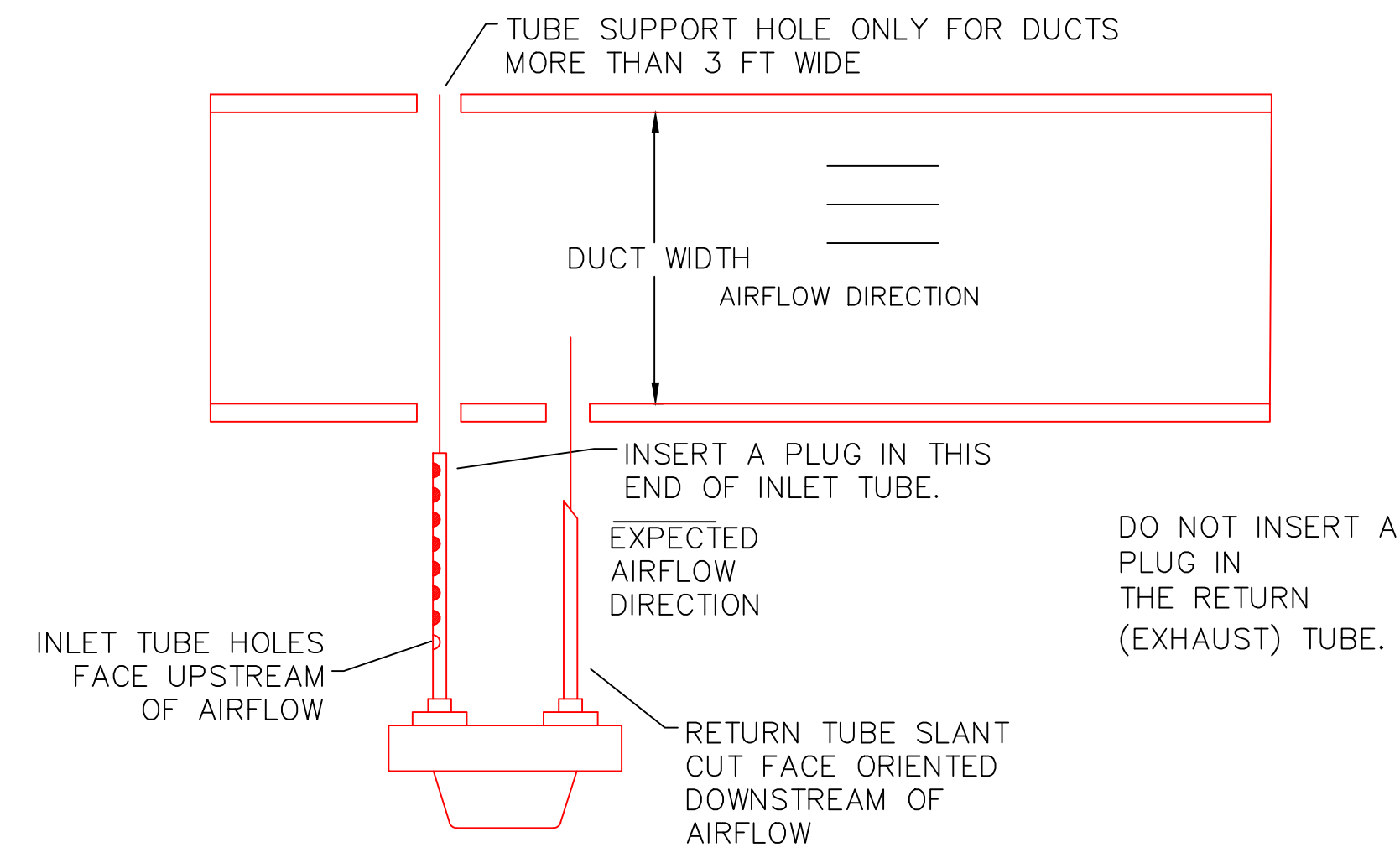
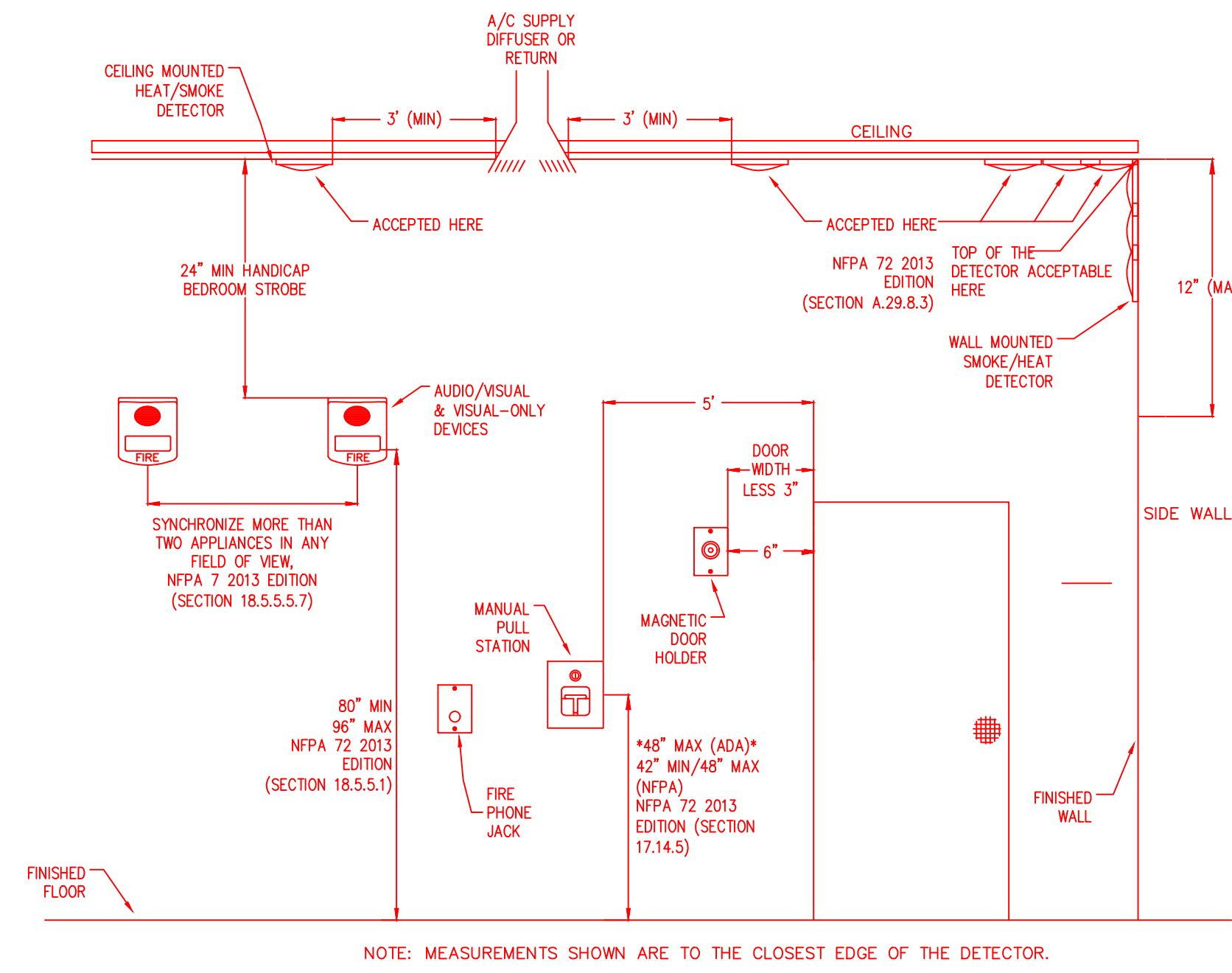


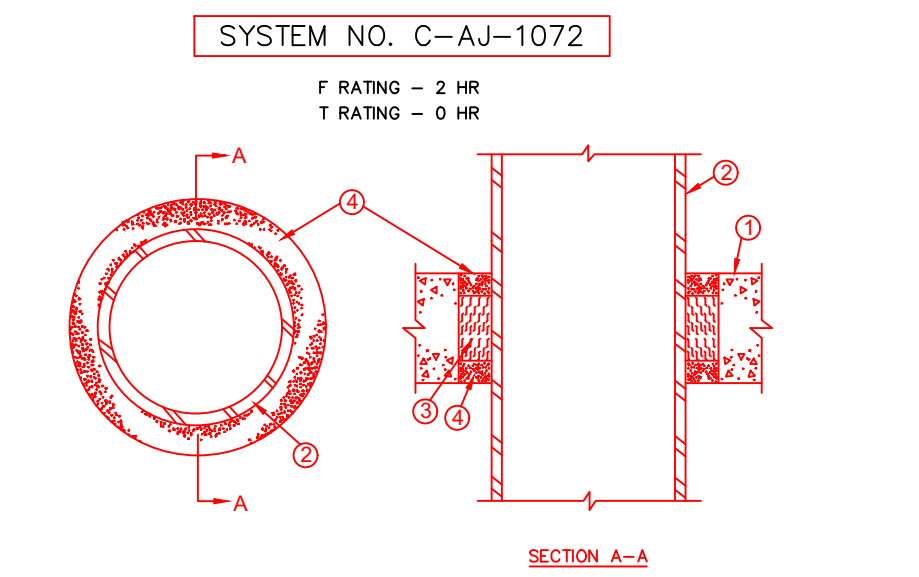
FIRE ALARM SYSTEM INPUT/OUTPUT MATRIX	SYSTEM OUTPUTS																									
	FACP ANNUNCIATION													NOTIFICATION												
SYSTEM INPUTS	REQUIRED FIRE SAFETY CONTROL																									
	A	B	C	D	E	F	G	H	I	J	K	L	M	N	O	P	Q	R	S	T	U	V	W	X	Y	
1 FIRE ALARM SYSTEM AC POWER FAILURE																										
2 FIRE ALARM SYSTEM LOW BATTERY																										
3 OPEN CIRCUIT																										
4 GROUND FAULT																										
5 NOTIFICATION APPLIANCE CIRCUIT SHORT																										
6 BUILDING MANUAL PULL STATIONS																										
7 SMOKE DETECTORS																										
8 AREA SMOKE DETECTORS																										
9 HVAC AIR DUCT SMOKE DETECTORS																										
10 HEAT DETECTORS																										



2 INLET TUBE ORIENTATION DIAGRAM
SCALE: 1/8" = 1'-0"

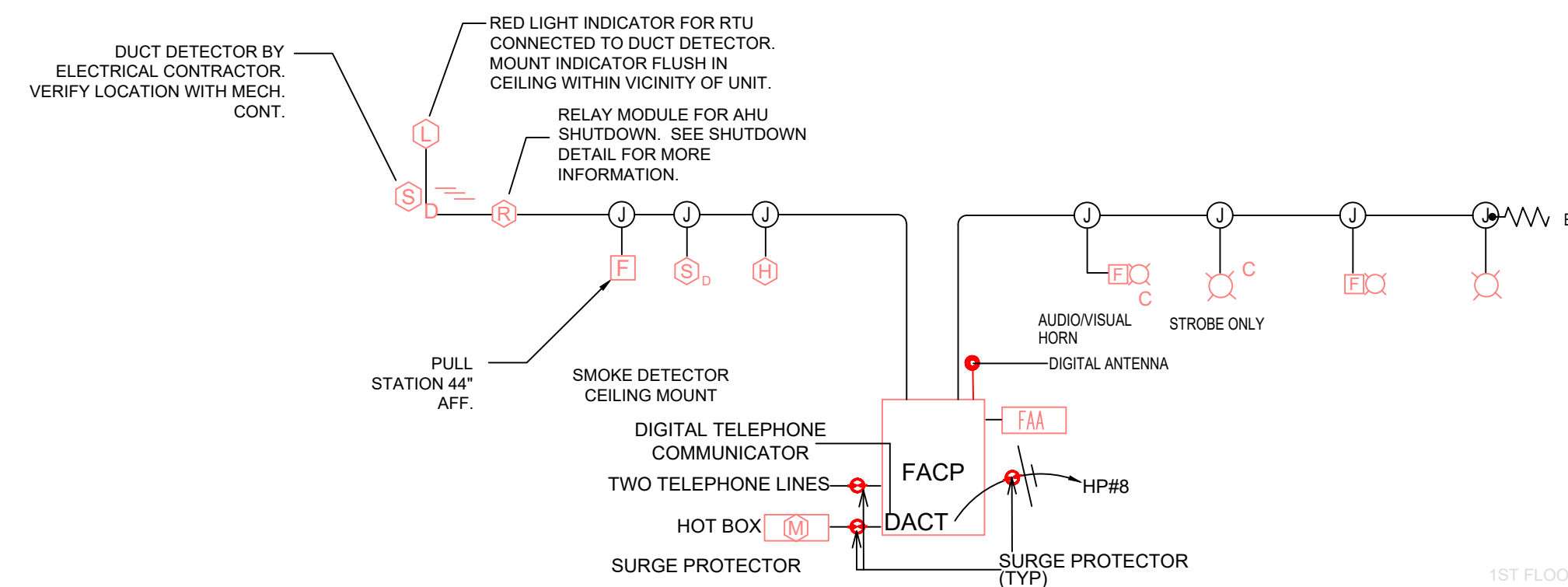


3 DEVICE MOUNTING HEIGHTS - FIRE ALARM
SCALE: NONE



- FLOOR OR WALL ASSEMBLY MIN 2-1/2 IN. THICK REINFORCED LIGHTWEIGHT OR NORMAL WEIGHT (100-150 PCF) CONCRETE. WALL MAY ALSO BE CONSTRUCTED OF ANY UL CLASSIFIED CONCRETE BLOCKS. MAX DIAM OF CIRCULAR OPENING IS 6 IN.
 - THROUGH PENETRANTS ONE METALLIC PIPE OR CONDUIT CENTERED WITHIN THE FIRESTOP SYSTEM. A NOM ANNUAL SPACE OF 3/4 IN. IS REQUIRED WITHIN THE FIRESTOP SYSTEM. PIPE OR CONDUIT TO BE SQUEELED SUPPORTED ON BOTH SIDES OF FLOOR OR WALL ASSEMBLY. THE FOLLOWING TYPES AND SIZES OF METALLIC PIPES OR CONDUITS MAY BE USED:
 - STEEL PIPE NOM 4 IN. DIAM SCHEDULE 5 (OR HEAVIER) STEEL PIPE.
 - CONDUIT NOM 4 IN. DIAM (OR SMALLER) STEEL ELECTRICAL METALLIC TUBING OR STEEL CONDUIT.
 - PACKING MATERIAL MIN 1-1/2 IN. THICKNESS OF MIN 4.4 PCF MINERAL WOOL BATT INSULATION FINELY PACKED TO OPENING AS A PERMANENT FORM. PACKING MATERIAL TO BE RECESSED FROM TOP SURFACE OF FLOOR OR WALL AS REQUIRED TO ACCOMMODATE THE REQUIRED THICKNESS OF FILL MATERIAL.
 - FILL VOID OR CAVITY MATERIALS --- SEALANT MIN 1/2 IN. THICKNESS OF FILL MATERIAL APPLIED AT BOTH SURFACES OF FLOOR OR WALL ASSEMBLY. PFC-DESIGTO INTERNATIONAL INC --- TYPE PFC-805 SEALANT
- *BEARING THE UL CLASSIFICATION MARK

4 2 HOUR PENETRATION FIRESTOP
SCALE: NTS



5 FIRE ALARM RISER
SCALE: NONE

NOTES

- FIRE ALARM SYSTEM SHALL BE ADDRESSABLE. 24V DC, POWER LIMITED FULLY SUPERVISED, WITH 24 HOUR STANDBY BATTERY, PANEL TO BE SEMI-FLUSH MOUNTED.
- FIRE ALARM DEVICES ARE TO BE INSTALLED IN ACCORDANCE WITH NFPA 72 AND "ADA"
- ALL FIRE ALARM WIRING SHALL BE RUN AS ALLOWED BY NEC OR LOCAL AHJ.
- DEVICE QUANTITIES SHALL BE AS INDICATED ON THE PLANS.
- DUCT MOUNTED SMOKE DETECTORS ARE TO BE PROVIDED BY M.C. AND INSTALLED/WIRED BY E.C.
- ELECTRICAL CONTRACTOR SHALL PROVIDE A FULLY FUNCTIONAL FIRE ALARM SYSTEM.
- TESTING OF THE FIRE ALARM SYSTEM SHALL BE THE RESPONSIBILITY OF THE ELECTRICAL CONTRACTOR.
- ALL VISUAL DEVICES IN A COMMON VIEWING AREA SHALL BE SYNCHRONIZED.

SEALS

DAVID BENZO
NICET LEVEL III
CERTN. # 129340

DRAWING TITLE

FIRE ALARM SHOP DRAWINGS

PROJECT

HARNETT
CENTRAL
CROSSING
FOOD MARKET

4585 NC HWY 210 N.
LILLINGTON, NC 27546

CLIENT

REVISIONS

NUMBER	DESCRIPTION	DATE

DRAWN BY

CHECKED BY

DATE ISSUED 05.29.20

2

2 OF 2