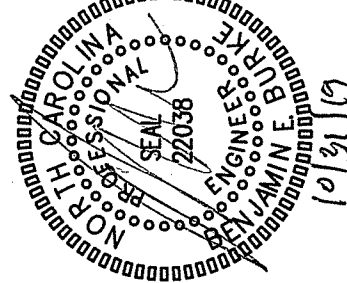


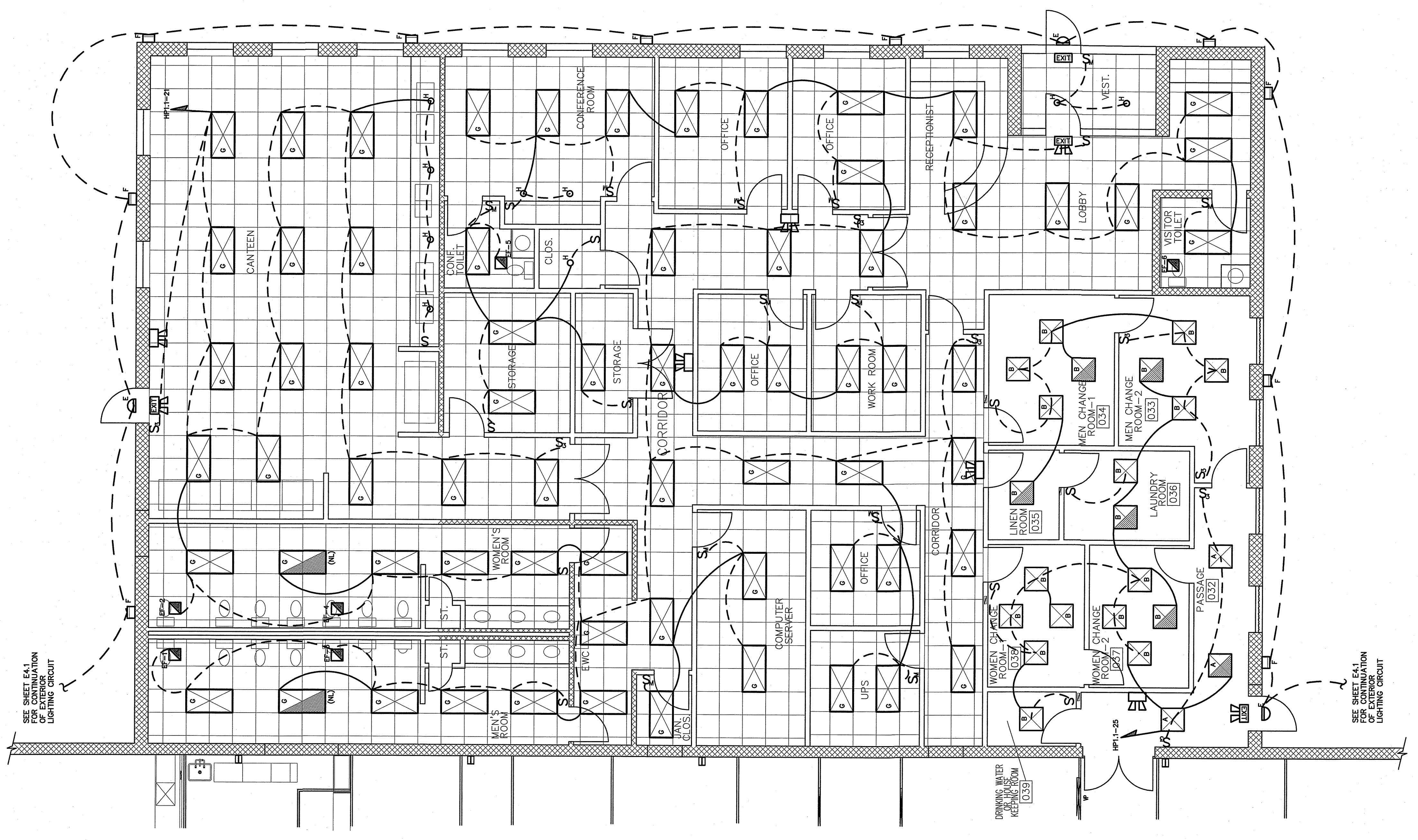
REVISIONS	BY

BDG
 BURKE DESIGN GROUP, PA
 3305-109 DURHAM DRIVE
 RALEIGH, NC 27603
 PHONE: (919) 771-1916
 FAX: (919) 779-0826
 email: ben@bdg-nc.com



KRIGEN PHARMACEUTICALS LLC
 800 EDWARDS DR
 LILLINGTON, NC 27546

14.2
 10/29/2018
 3/16
 10/29/2018
 10/29/2018
 10/29/2018



1 REVISED OFFICE LIGHTING PLAN
 SCALE: 3/16" = 1'-0"

NOTICE LABELING ON EACH SWITCH NOTING CIRCUIT SERVED.

NOTE: AUTOMATIC LIGHTING SHUTOFF IS NOT SHOWN IN THE EXCEPT AS SHOWN. AUTOMATIC SHUTOFF WORLD ENGINEER OCCUPANT SAFETY.

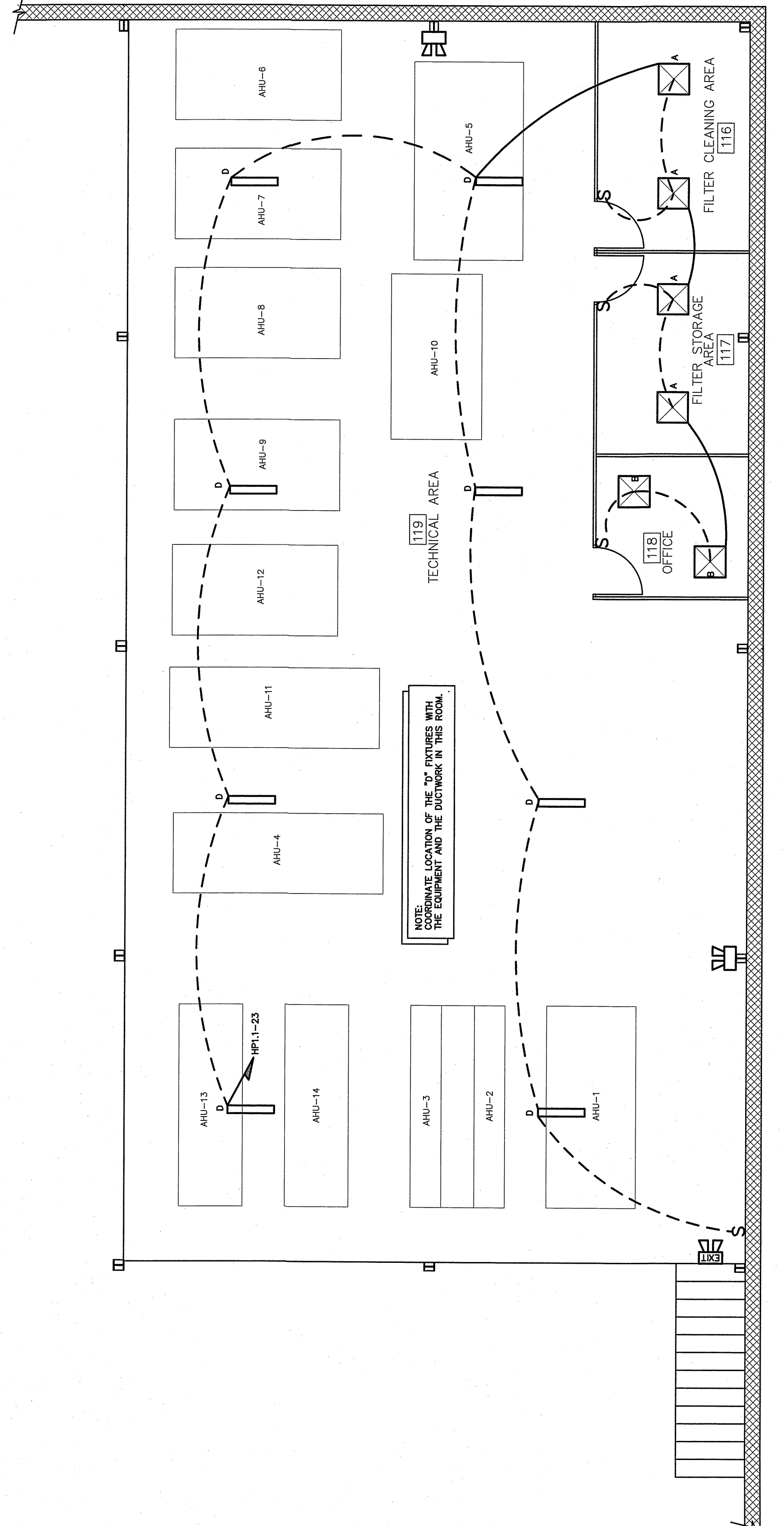
NOTE: ALL LED AND EMERGENCY LIGHTS AND DEVICES MUST BE INSTALLED AND DEVICES PROPER TO INSTALLATION. VERIFY HEIGHT/LOCATION OF ALL SWITCHES AND DEVICES PRIOR TO INSTALLATION. VERIFY HEIGHT/LOCATION OF ALL SWITCHES AND DEVICES PRIOR TO INSTALLATION. VERIFY HEIGHT/LOCATION OF ALL SWITCHES AND DEVICES PRIOR TO INSTALLATION. VERIFY HEIGHT/LOCATION OF ALL SWITCHES AND DEVICES PRIOR TO INSTALLATION.

NOTE: ALL LIGHT FIXTURES MUST BE UNBUNDLED FROM THE MAIN CABLE TRUNK FOR ALL TYPE "L" FIXTURES. (TYP)

NOTE: EXHAUST FANS PROVIDED BY HVAC CONTRACTOR. VERIFY UNITS HAVE DISCONNECTING MEANS PER NEC. PROVIDE DISCONNECTS IF NEEDED.

(FOR FULL LIGHTING SCHEDULE SEE SHEET E1.0)

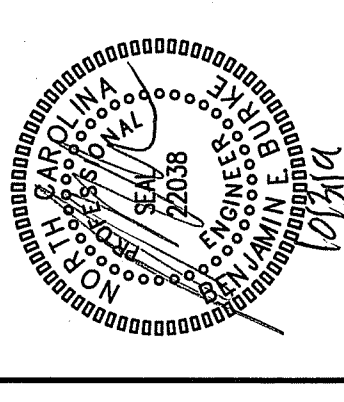
MARK	REMARKS
A	48W TOP ACCESSIBLE LED FIXTURE
B	48W TOP ACCESSIBLE LED FIXTURE
C	ACETIC LIGHT
D	2' WEATHERPROOF LED STRIP
E	EXTERIOR NORMAL/EMERGENCY LIGHT FIXTURE
F	EXTERIOR LED WALLPACK
G	2X4 LED LAY-IN FIXTURE
H	18" LED CAN LIGHT
EXIT	LED EXIT LIGHT
EMER	LED EMERGENCY EGRESS LIGHT
COMBO	COMBO LED EXT/EMERGENCY EGRESS LIGHT



2 REVISED MEZZANINE LIGHTING PLAN
 SCALE: 3/16" = 1'-0"

REVISIONS	BY

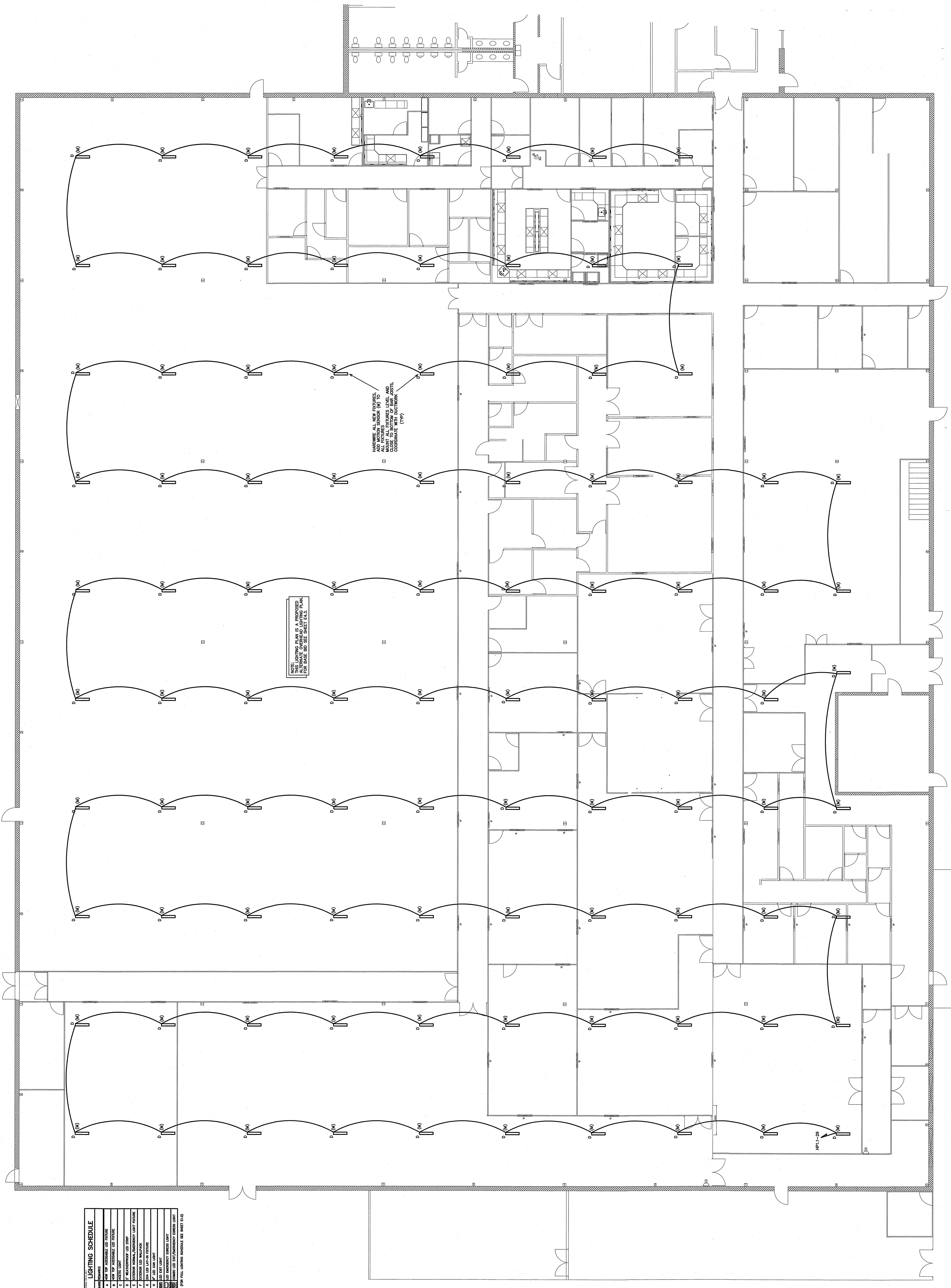
BURKE DESIGN GROUP, PA
 3305-109 DURHAM DRIVE
 RALEIGH, NC 27603
 PHONE: (919) 771-1916
 FAX: (919) 779-0826
 email: ben@bdg-nc.com



KRIGEN PHARMACEUTICALS LLC
 800 EDWARDS DR
 LILLINGTON, NC 27546

DATE	10/27/2019
ISSUED BY	BBB
SCALE	1/8" = 1'-0"
PROJECT NO.	
CLIENT	

E4.3
 (A1T)



NOTE:
 THIS LIGHTING PLAN IS A PROPOSED PLAN FOR BASE BID. SEE SHEET E4.3 FOR BASE BID.

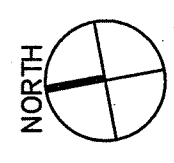
HARDWARE ALL NEW FIXTURES. ALL NEW HARDWARE TO ALL FIXTURES. COORDINATE ALL FIXTURES LEVEL AND COORDINATE WITH DUCTWORK (17)

PROJECT NO. 19-0000

LIGHTING SCHEDULE	
1	RECESSED LED DOWNLIGHT
2	RECESSED LED DOWNLIGHT
3	RECESSED LED DOWNLIGHT
4	RECESSED LED DOWNLIGHT
5	RECESSED LED DOWNLIGHT
6	RECESSED LED DOWNLIGHT
7	RECESSED LED DOWNLIGHT
8	RECESSED LED DOWNLIGHT
9	RECESSED LED DOWNLIGHT
10	RECESSED LED DOWNLIGHT
11	RECESSED LED DOWNLIGHT
12	RECESSED LED DOWNLIGHT
13	RECESSED LED DOWNLIGHT
14	RECESSED LED DOWNLIGHT
15	RECESSED LED DOWNLIGHT
16	RECESSED LED DOWNLIGHT
17	RECESSED LED DOWNLIGHT
18	RECESSED LED DOWNLIGHT
19	RECESSED LED DOWNLIGHT
20	RECESSED LED DOWNLIGHT
21	RECESSED LED DOWNLIGHT
22	RECESSED LED DOWNLIGHT
23	RECESSED LED DOWNLIGHT
24	RECESSED LED DOWNLIGHT
25	RECESSED LED DOWNLIGHT
26	RECESSED LED DOWNLIGHT
27	RECESSED LED DOWNLIGHT
28	RECESSED LED DOWNLIGHT
29	RECESSED LED DOWNLIGHT
30	RECESSED LED DOWNLIGHT
31	RECESSED LED DOWNLIGHT
32	RECESSED LED DOWNLIGHT
33	RECESSED LED DOWNLIGHT
34	RECESSED LED DOWNLIGHT
35	RECESSED LED DOWNLIGHT
36	RECESSED LED DOWNLIGHT
37	RECESSED LED DOWNLIGHT
38	RECESSED LED DOWNLIGHT
39	RECESSED LED DOWNLIGHT
40	RECESSED LED DOWNLIGHT
41	RECESSED LED DOWNLIGHT
42	RECESSED LED DOWNLIGHT
43	RECESSED LED DOWNLIGHT
44	RECESSED LED DOWNLIGHT
45	RECESSED LED DOWNLIGHT
46	RECESSED LED DOWNLIGHT
47	RECESSED LED DOWNLIGHT
48	RECESSED LED DOWNLIGHT
49	RECESSED LED DOWNLIGHT
50	RECESSED LED DOWNLIGHT
51	RECESSED LED DOWNLIGHT
52	RECESSED LED DOWNLIGHT
53	RECESSED LED DOWNLIGHT
54	RECESSED LED DOWNLIGHT
55	RECESSED LED DOWNLIGHT
56	RECESSED LED DOWNLIGHT
57	RECESSED LED DOWNLIGHT
58	RECESSED LED DOWNLIGHT
59	RECESSED LED DOWNLIGHT
60	RECESSED LED DOWNLIGHT
61	RECESSED LED DOWNLIGHT
62	RECESSED LED DOWNLIGHT
63	RECESSED LED DOWNLIGHT
64	RECESSED LED DOWNLIGHT
65	RECESSED LED DOWNLIGHT
66	RECESSED LED DOWNLIGHT
67	RECESSED LED DOWNLIGHT
68	RECESSED LED DOWNLIGHT
69	RECESSED LED DOWNLIGHT
70	RECESSED LED DOWNLIGHT
71	RECESSED LED DOWNLIGHT
72	RECESSED LED DOWNLIGHT
73	RECESSED LED DOWNLIGHT
74	RECESSED LED DOWNLIGHT
75	RECESSED LED DOWNLIGHT
76	RECESSED LED DOWNLIGHT
77	RECESSED LED DOWNLIGHT
78	RECESSED LED DOWNLIGHT
79	RECESSED LED DOWNLIGHT
80	RECESSED LED DOWNLIGHT
81	RECESSED LED DOWNLIGHT
82	RECESSED LED DOWNLIGHT
83	RECESSED LED DOWNLIGHT
84	RECESSED LED DOWNLIGHT
85	RECESSED LED DOWNLIGHT
86	RECESSED LED DOWNLIGHT
87	RECESSED LED DOWNLIGHT
88	RECESSED LED DOWNLIGHT
89	RECESSED LED DOWNLIGHT
90	RECESSED LED DOWNLIGHT
91	RECESSED LED DOWNLIGHT
92	RECESSED LED DOWNLIGHT
93	RECESSED LED DOWNLIGHT
94	RECESSED LED DOWNLIGHT
95	RECESSED LED DOWNLIGHT
96	RECESSED LED DOWNLIGHT
97	RECESSED LED DOWNLIGHT
98	RECESSED LED DOWNLIGHT
99	RECESSED LED DOWNLIGHT
100	RECESSED LED DOWNLIGHT

(SEE FULL LIGHTING SCHEDULE SEE SHEET E4.3)

1 REVISED OVERHEAD LIGHTING PLAN
 SCALE: 1/8" = 1'-0"



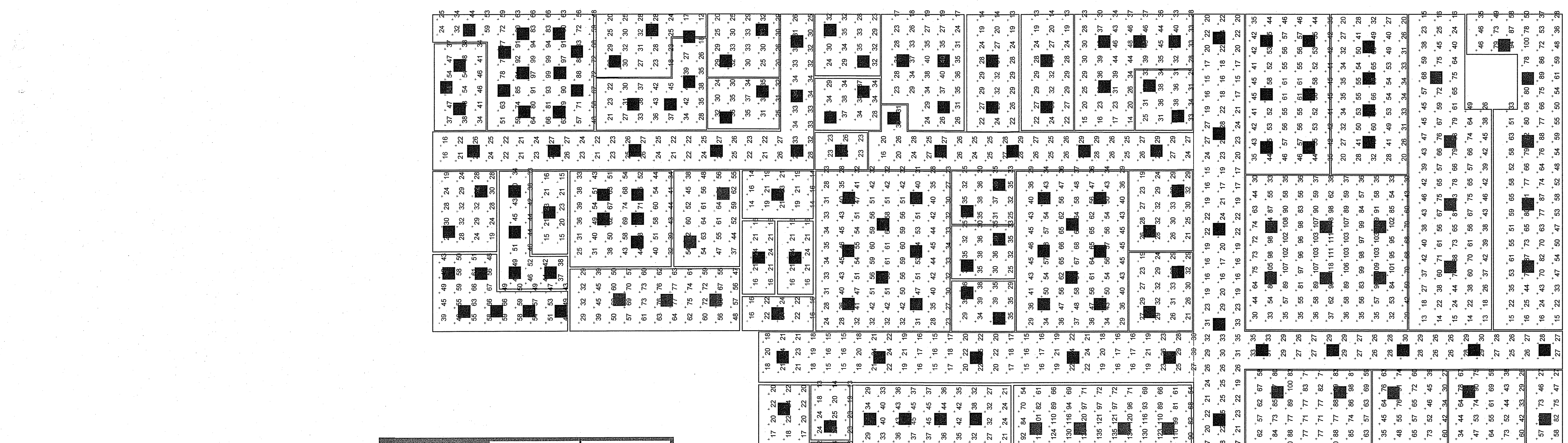
Krigen Pharmaceuticals

19-41945

10/18/2019

Schedule		Label		Quantity		Manufacturer		Catalog Number		Light Loss Factor		Wattage	
Symbol		A	B	274	235	Kenall Manufacturing	Kenall Manufacturing	CSEDO-22-45AD/45LD-40K8-DIM1-DV-2F-2H-SYM	CSEDO-22-45AD/45LD-40K8-DIM1-DV-2F-2H-SYM	0.95	0.45	49	49

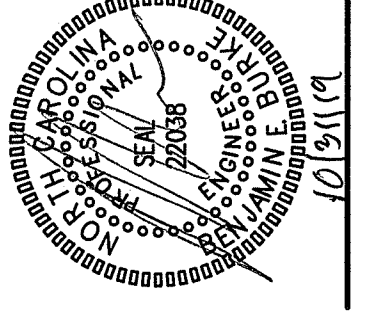
Statistics	Description	Symbol	Avg	Max	Min	Max/Min	Avg/Min
001	PM Receipt	+	36.6	47.6	23.6	2.01	1.61
002	PM Receipt	+	39.6	49.6	27.6	1.81	1.41
003	Hold Area Km	+	29.6	33.6	24.6	1.41	2.21
004	Office	+	79.6	115.6	19.6	6.11	4.21
005	PM Approved/Underest	+	41.6	100.6	33.6	3.01	2.41
006	Sampling	+	49.6	94.6	27.6	2.51	2.41
007	Dispensing-1	+	39.6	94.6	24.6	2.81	2.51
008	Dispensing-1	+	39.6	94.6	24.6	2.81	2.51
009	Passage	+	49.6	94.6	27.6	2.51	2.41
010	Change-2	+	49.6	94.6	27.6	2.51	2.41
011	Change-2	+	49.6	94.6	27.6	2.51	2.41
012	Change-2	+	49.6	94.6	27.6	2.51	2.41
013	Change-2	+	49.6	94.6	27.6	2.51	2.41
014	Water Area	+	35.6	39.6	18.6	1.81	1.61
015	Clean Equip. Store	+	35.6	39.6	18.6	1.81	1.61
016	Dispensed Mat	+	25.6	31.6	15.6	1.11	1.71
017	Elect Mat Store	+	39.6	53.6	19.6	2.81	2.11
018	Passage	+	36.6	44.6	16.6	1.0711	1.61
019	Airlock	+	33.6	35.6	12.6	2.11	1.41
020	Corridor	+	27.6	35.6	12.6	2.91	2.31
021	Approved Primary Packing Material	+	86.6	113.6	23.6	4.91	3.71
022	Training Sum Conference Room	+	78.6	100.6	23.6	4.81	1.41
023	Engineering Store	+	56.6	90.6	27.6	3.41	2.11
024	House Keeping	+	48.6	82.6	19.6	4.31	2.51
025	House Keeping	+	56.6	90.6	27.6	3.41	2.11
026	Stability Tech Area	+	59.6	100.6	15.6	6.71	3.91
027	Stability Area	+	73.6	93.6	13.6	7.21	3.81
028	Retain Sample Room	+	49.6	118.6	29.6	4.11	2.51
029	Documentation Room	+	49.6	66.6	20.6	3.31	2.11
030	QA Office	+	49.6	61.6	35.6	1.71	1.41
031	Corridor	+	31.6	35.6	15.6	1.41	1.41
032	Receipt Sample	+	31.6	38.6	25.6	1.51	1.31
033	Office	+	33.6	48.6	14.6	3.41	2.41
034	Chemical Storage	+	25.6	32.6	13.6	2.51	1.91
035	Gasware Storage	+	25.6	32.6	13.6	2.51	1.91
036	Gasware Storage	+	25.6	32.6	13.6	2.51	1.91
037	Gasware Storage	+	25.6	32.6	13.6	2.51	1.91
038	Passage	+	26.6	33.6	16.6	2.11	1.61
039	Airlock	+	24.6	26.6	23.6	1.11	1.01
040	Office	+	34.6	38.6	28.6	1.41	1.21
041	General Store	+	31.6	35.6	23.6	1.51	1.31
042	Passage	+	26.6	34.6	16.6	2.11	1.61
043	Gasware Storage	+	29.6	33.6	20.6	1.71	1.51
044	Gasware Storage	+	29.6	33.6	20.6	1.71	1.51
045	Gasware Storage	+	29.6	33.6	20.6	1.71	1.51
046	Gasware Storage	+	29.6	33.6	20.6	1.71	1.51
047	Media Preparation and Storage	+	33.6	45.6	18.6	2.51	1.81
048	Incubator	+	44.6	54.6	34.6	1.61	1.31
049	Washing	+	26.6	32.6	12.6	2.71	2.21
050	Microbiological Testing Area	+	72.6	99.6	24.6	4.11	3.01
051	Culture Handling Area	+	54.6	67.6	39.6	1.71	1.41
052	Change Room	+	19.6	23.6	15.6	1.51	1.31
053	SerIALIZATION ROOM	+	49.6	74.6	25.6	3.01	2.01
054	Cooling Zone	+	55.6	77.6	29.6	2.71	2.01
055	Stability	+	59.6	64.6	37.6	1.71	1.51
056	Stability	+	20.6	24.6	16.6	1.51	1.31
057	Stability	+	20.6	24.6	16.6	1.51	1.31
058	Stability	+	19.6	23.6	14.6	1.61	1.31
059	Stability	+	42.6	61.6	23.6	2.71	1.81
060	Stability	+	33.6	38.6	25.6	1.51	1.31
061	Stability	+	35.6	39.6	29.6	1.31	1.21
062	Stability	+	48.6	68.6	29.6	2.31	1.71
063	Stability	+	29.6	33.6	19.6	1.71	1.51
064	Stability	+	28.6	33.6	19.6	1.71	1.51
065	Stability	+	20.6	26.6	13.6	2.01	1.51
066	Stability	+	20.6	26.6	13.6	2.21	1.71
067	Stability	+	36.6	45.6	21.6	2.11	1.71
068	Stability	+	104.6	146.6	53.6	2.81	2.01
069	Stability	+	107.6	129.6	75.6	1.71	1.41
070	Stability	+	92.6	139.6	29.6	4.81	3.21
071	Stability	+	24.6	27.6	23.6	1.21	1.01
072	Stability	+	0.6	0.6	0.6	N/A	N/A
073	Stability	+	43.6	47.6	38.6	1.21	1.11
074	Stability	+	22.6	25.6	19.6	1.31	1.21
075	Stability	+	24.6	26.6	21.6	1.21	1.11
076	Stability	+	53.6	74.6	33.6	2.21	1.61
077	Stability	+	28.6	32.6	12.6	2.81	2.31
078	Stability	+	51.6	127.6	40.6	3.21	2.31
079	Stability	+	18.6	22.6	12.6	1.81	1.51
080	Stability	+	24.6	29.6	14.6	2.11	1.71
081	Stability	+	29.6	30.6	16.6	1.81	1.61
082	Stability	+	29.6	30.6	16.6	1.81	1.61
083	Stability	+	29.6	30.6	16.6	1.81	1.61
084	Stability	+	29.6	30.6	16.6	1.81	1.61
085	Stability	+	29.6	30.6	16.6	1.81	1.61
086	Stability	+	29.6	30.6	16.6	1.81	1.61
087	Stability	+	29.6	30.6	16.6	1.81	1.61
088	Stability	+	29.6	30.6	16.6	1.81	1.61
089	Stability	+	29.6	30.6	16.6	1.81	1.61
090	Stability	+	29.6	30.6	16.6	1.81	1.61
091	Stability	+	29.6	30.6	16.6	1.81	1.61
092	Stability	+	29.6	30.6	16.6	1.81	1.61
093	Stability	+	29.6	30.6	16.6	1.81	1.61
094	Stability	+	29.6	30.6	16.6	1.81	1.61
095	Stability	+	29.6	30.6	16.6	1.81	1.61
096	Stability	+	29.6	30.6	16.6	1.81	1.61
097	Stability	+	29.6	30.6	16.6	1.81	1.61
098	Stability	+	29.6	30.6	16.6	1.81	1.61
099	Stability	+	29.6	30.6	16.6	1.81	1.61
100	Stability	+	29.6	30.6	16.6	1.81	1.61
101	Stability	+	29.6	30.6	16.6	1.81	1.61
102	Stability	+	29.6	30.6	16.6	1.81	1.61
103	Stability	+	29.6	30.6	16.6	1.81	1.61
104	Stability	+	29.6	30.6	16.6	1.81	1.61
105	Stability	+	29.6	30.6	16.6	1.81	1.61
106	Stability	+	29.6	30.6	16.6	1.81	1.61
107	Stability	+	29.6	30.6	16.6	1.81	1.61
108	Stability	+	29.6	30.6	16.6	1.81	1.61
109	Stability	+	29.6	30.6	16.6	1.81	1.61
110	Stability	+	29.6	30.6	16.6	1.81	1.61
111	Stability	+	29.6	30.6	16.6	1.81	1.61
112	Stability	+	29.6	30.6	16.6	1.81	1.61
113	Stability	+	29.6	30.6	16.6	1.81	1.61
114	Stability	+	29.6	30.6	16.6	1.81	1.61
115	Stability	+	29.6	30.6	16.6	1.81	1.61
116	Stability	+	29.6	30.6	16.6	1.81	1.61
117	Stability	+	29.6	30.6	16.6	1.81	1.61
118	Stability	+	29.6	30.6	16.6	1.81	1.61
119	Stability	+	29.6	30.6	16.6	1.81	1.61
120	Stability	+	29.6	30.6	16.6	1.81	1.61



(FOR REFERENCE ONLY)

REVISIONS	BY

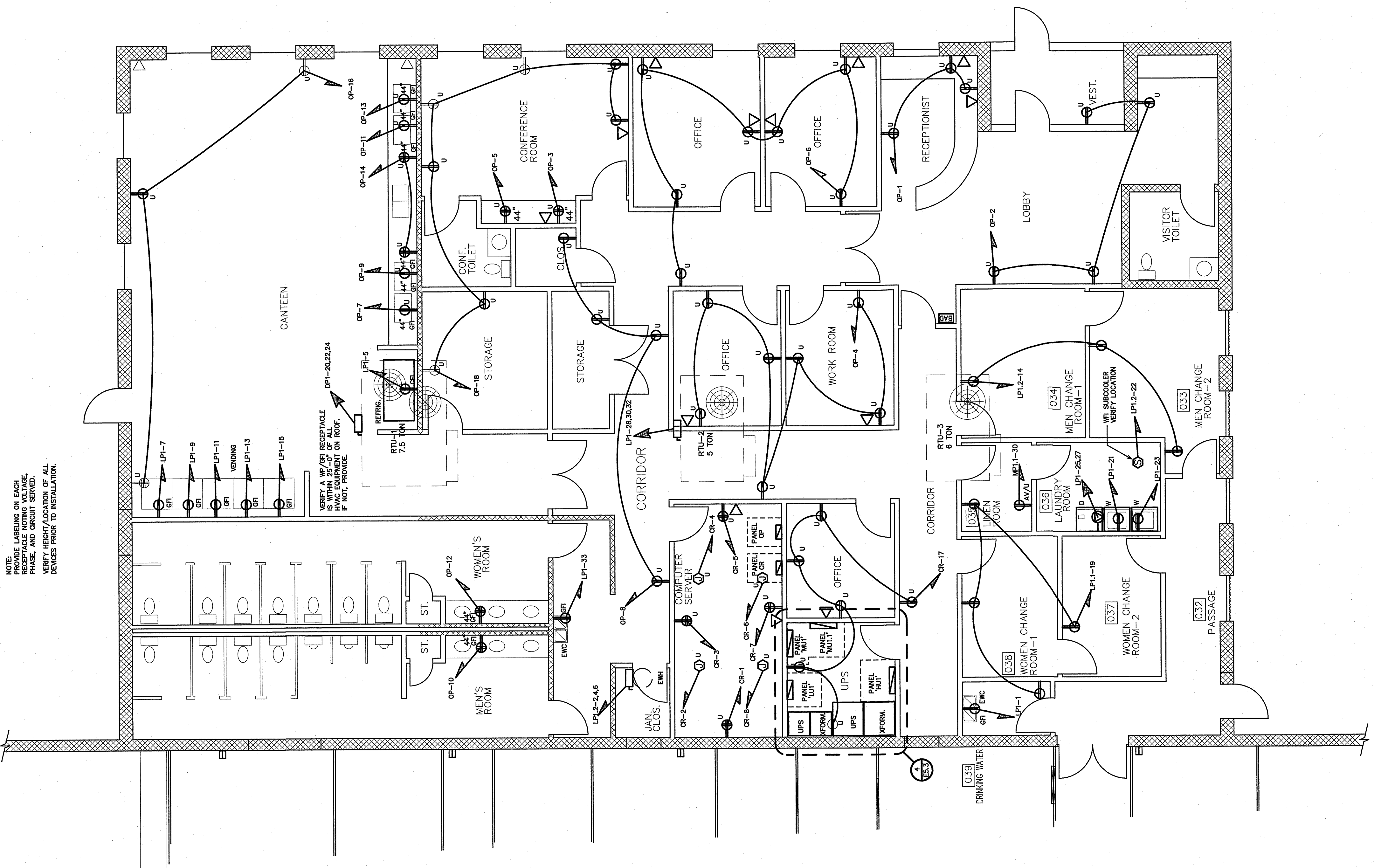
BURKE DESIGN GROUP, PA
 3305-109 DURHAM DRIVE
 RALEIGH, NC 27603
 PHONE: (919) 771-1916
 FAX: (919) 779-0826
 email: burk@bdcg.com



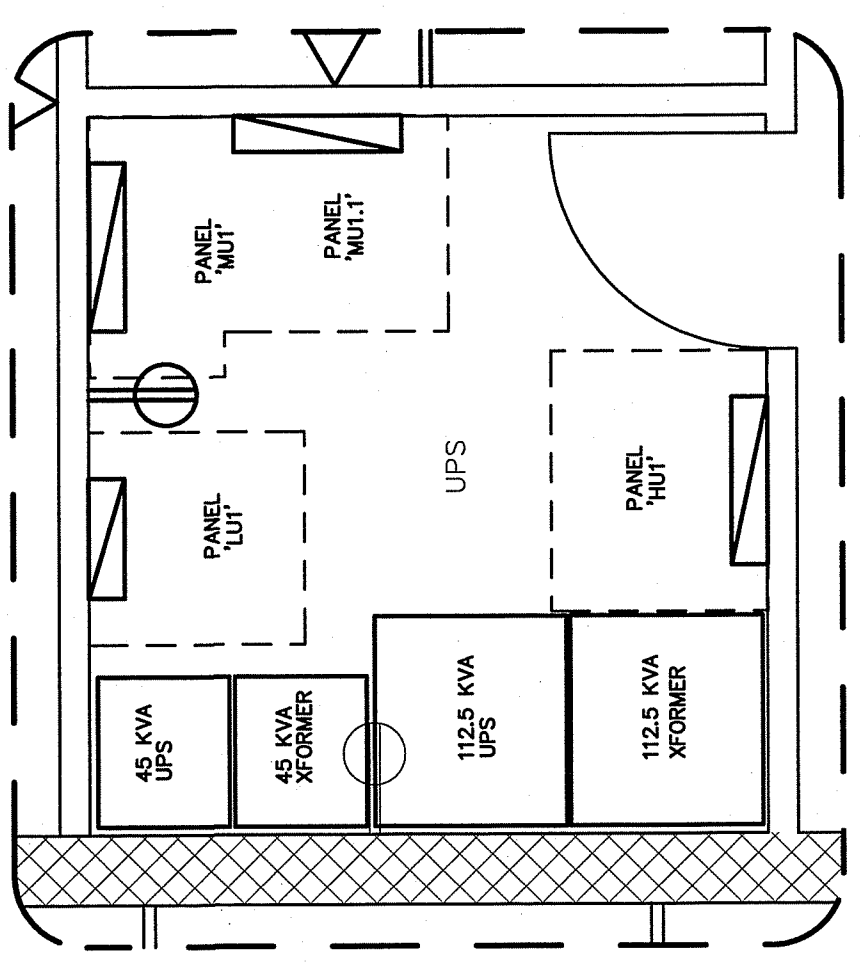
KRIGEN PHARMACEUTICALS LLC
 800 EDWARDS DR
 LILLINGTON, NC 27546

H5.3

DATE: 10/07/2010
 DRAWN BY: BEB
 CHECKED BY: JHB
 SCALE: 3/16" = 1'-0"

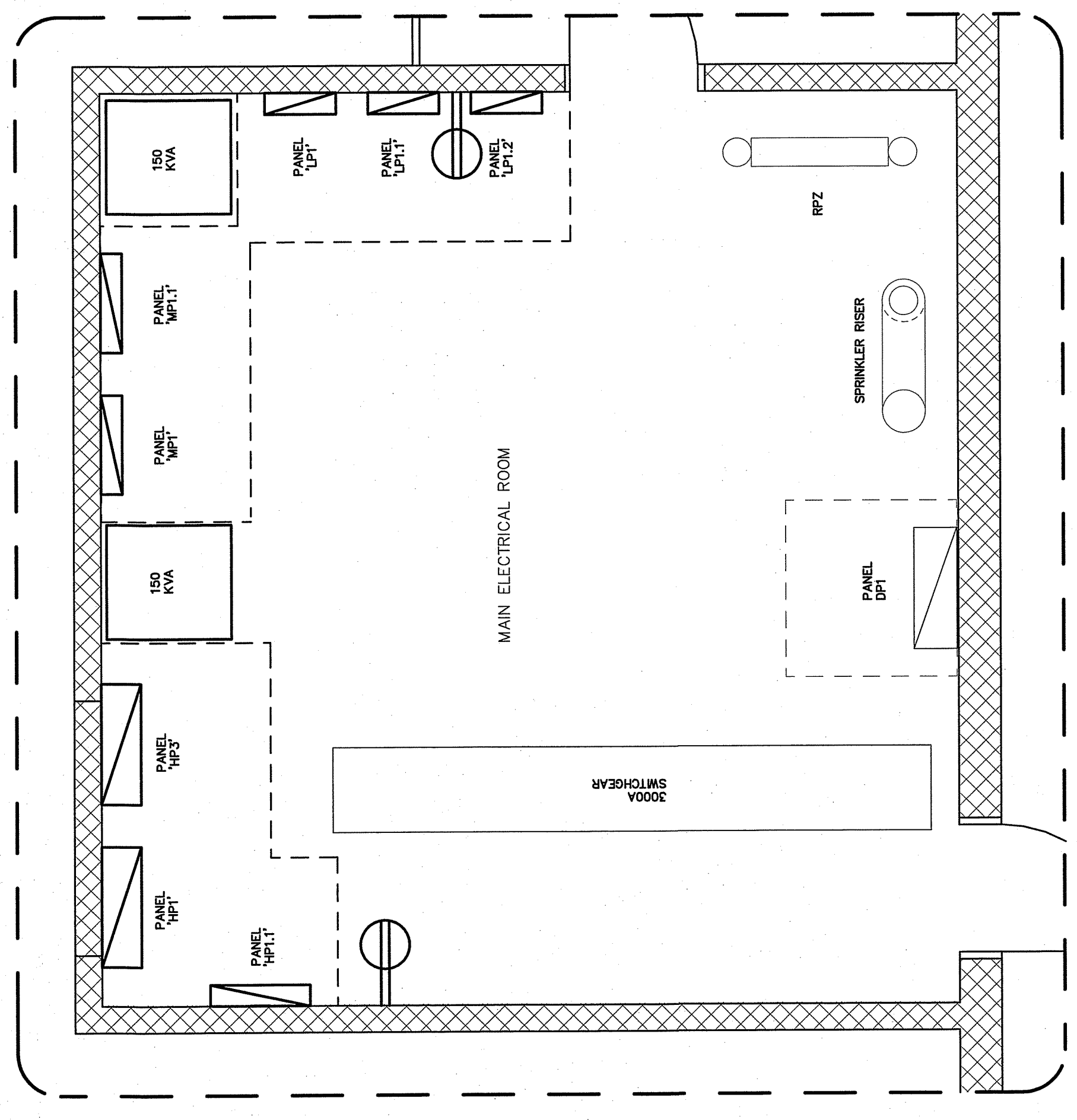


1 REVISED OFFICE POWER PLAN
 SCALE: 3/16" = 1'-0"

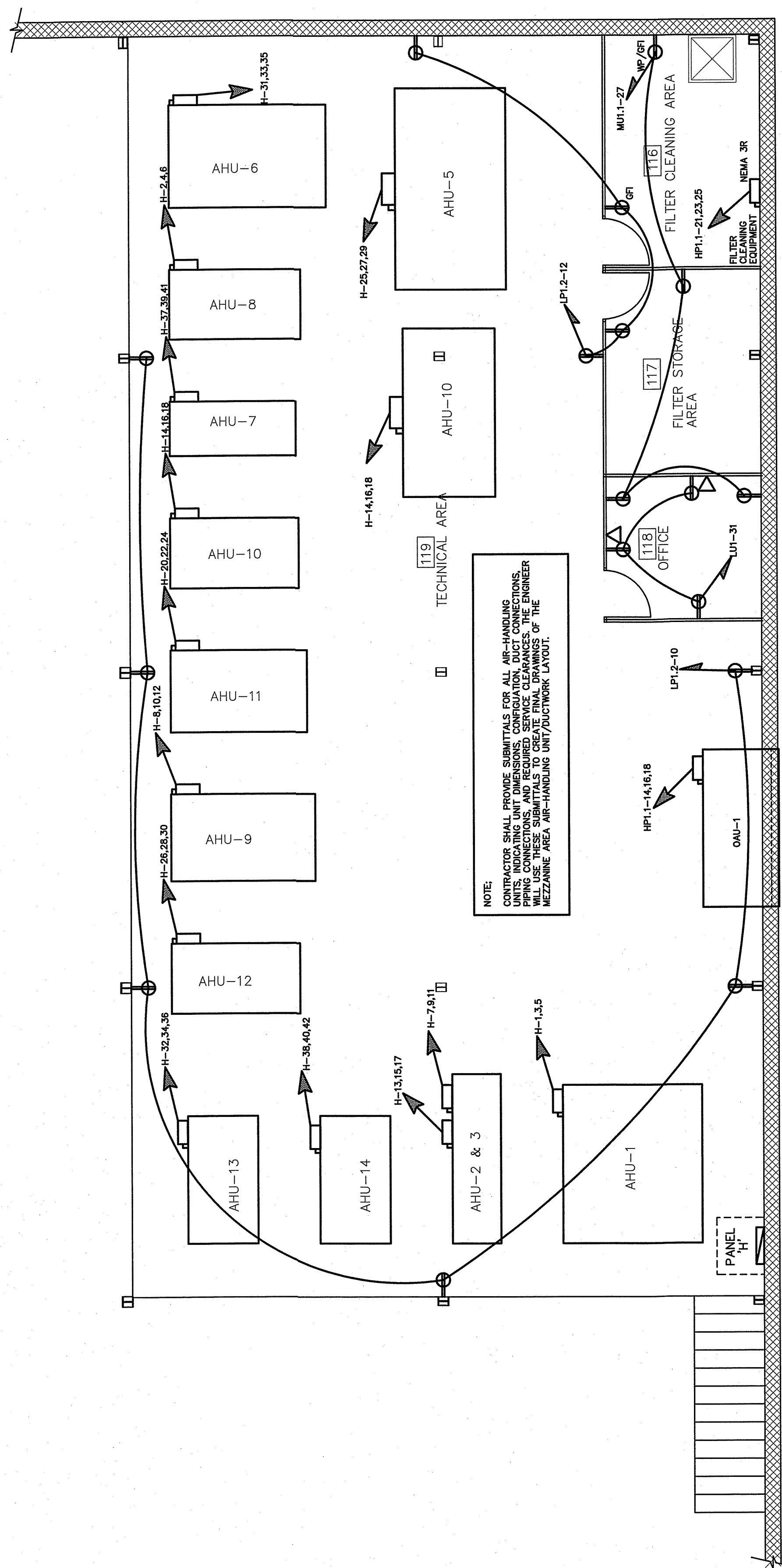


4 ENLARGED UPS ROOM POWER PLAN
 SCALE: 3/8" = 1'-0"

- RECEPTACLE LEGEND**
- ⊕ STANDARD VOLTAGE (120V)
 - ⊕ STANDARD UPS VOLTAGE (120V)
 - ⊕ ALTERNATE UPS VOLTAGE (200V)
 - ⊕ EXISTING SERVICE TO REMAIN
 - ⊕ NEW/RELOCATED SERVICE



3 ENLARGED ELECTRICAL ROOM POWER PLAN
 SCALE: 3/8" = 1'-0"



2 REVISED MEZZANINE POWER PLAN
 SCALE: 3/16" = 1'-0"

