

PHYSICALLY HANDICAPPED NOTES

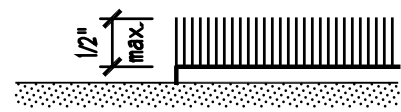
BUILDING BLOCKS

1. FLOOR & GROUND SURFACES:

FLOOR and GROUND SURFACES SHALL BE STABLE, FIRM, and SLIP RESISTANT and SHALL COMPLY WITH SECTION 11-302.

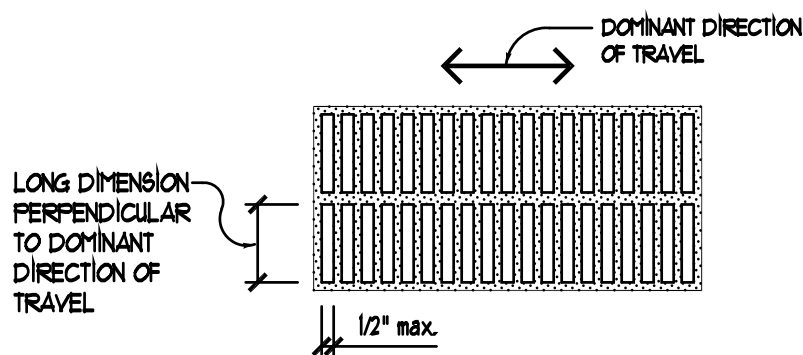
Carpet:

CARPET or CARPET TILE SHALL BE SECURELY ATTACHED and SHALL HAVE A FIRM CUSHION, PAD, or BACKING or NO CUSHION or PAD. CARPET or CARPET TILE SHALL HAVE A LEVEL LOOP, TEXTURED LOOP, LEVEL CUT PILE, LEVEL CUT/NO CUT PILE TEXTURE. PILE HEIGHT SHALL BE 1/2 INCH MAXIMUM. EXPOSED EDGES OF CARPET SHALL BE FASTENED TO FLOOR SURFACES and SHALL HAVE TRIM ON THE ENTIRE LENGTH OF THE EXPOSED EDGE. CARPET EDGE TRIM SHALL COMPLY WITH SECTION 11B-303.



Openings:

OPENINGS IN FLOOR or GROUND SURFACES SHALL NOT ALLOW PASSAGE OF A SPHERE MORE THAN 1/2 INCH DIAMETER EXCEPT AS ALLOWED IN SECTIONS 11B-401-43, 11B-403.3, 11B-410.4, 11B-810.5.3, and 11B-910.10. ELONGATED OPENINGS SHALL BE PLACED SO THAT THE LONG DIMENSION IS PERPENDICULAR TO THE DOMINANT DIRECTION OF TRAVEL.



2. CHANGES IN LEVEL:

WHERE CHANGES IN LEVEL ARE PERMITTED IN FLOOR or GROUND SURFACES, THEY SHALL COMPLY WITH SECTION 11B-303.

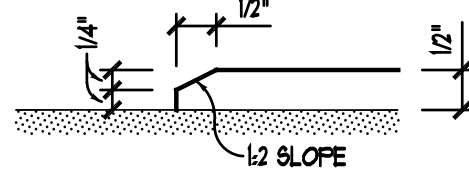
Vertical:

VERTICAL CHANGES IN LEVEL OF 1/4 INCH HIGH MAXIMUM SHALL BE PERMITTED TO BE VERTICAL and WITHOUT EDGE TREATMENT.



Beveled:

BEVEL CHANGES IN LEVEL BETWEEN 1/4 INCH HIGH MAXIMUM and 1/2 INCH HIGH MAXIMUM SHALL BE BEVELED WITH A SLOPE NOT STEEPER THAN 1:2.



Ramps:

CHANGES IN LEVEL GREATER THAN 1/2 INCH HIGH SHALL BE RAMPED, and SHALL COMPLY WITH SECTION 11B-405 or 11B-406.

Warning Curbs:

ABRUPT CHANGES IN LEVEL EXCEEDING 4 INCHES IN A VERTICAL DIMENSION BETWEEN WALKS, SIDEWALKS or OTHER PEDESTRIAN WAYS and ADJACENT SURFACES or FEATURES SHALL BE IDENTIFIED BY WARNING CURBS AT LEAST 6 INCHES IN HEIGHT ABOVE THE WALK or SIDEWALK SURFACE.

Exception:

A WARNING CURB IS NOT REQUIRED BETWEEN A WALK or SIDEWALK and AN ADJACENT STREET or DRIVEWAY.

A WARNING CURB IS NOT REQUIRED WHEN A GUARD or HANDRAIL IS PROVIDED WITH A GUIDE RAIL CENTERED 2 INCHES MINIMUM and 4 INCHES MAXIMUM ABOVE THE SURFACE OF THE WALK or SIDEWALK.

3. TURNING SPACES:

General:

TURNING SPACES SHALL COMPLY WITH SECTION 11B-304.

Floor or Ground Surfaces:

FLOOR or GROUND SURFACES OF A TURNING SPACE SHALL COMPLY WITH SECTION 11B-302. CHANGES IN LEVEL ARE NOT PERMITTED.

Exception:

SLOPES NOT STEEPER THAN 1:48 SHALL BE PERMITTED.

Size:

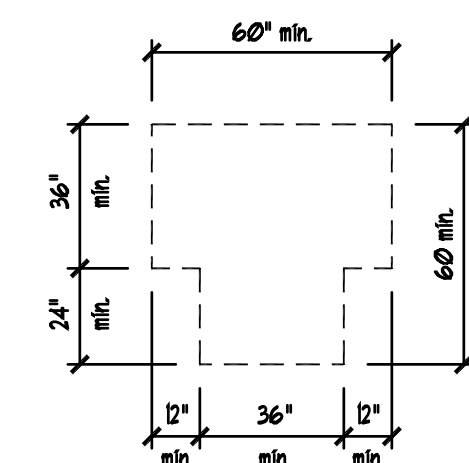
TURNING SPACE SHALL COMPLY WITH SECTION 11B-304.3.1 or 11B-304.3.2.

Circular Spaces:

THE TURNING SPACE SHALL BE A SPACE OF 60 INCHES DIAMETER MINIMUM. THE SPACE SHALL BE PERMITTED TO INCLUDE KNEE and TOE CLEARANCE COMPLYING WITH SECTION 11B-306.

T-shaped Spaces:

THE TURNING SPACE SHALL BE A T-SHAPED SPACE WITHIN A 60 INCH SQUARE MINIMUM WITH ARMS and BASE 36 INCHES WIDE MINIMUM. EACH ARM OF THE T SHALL BE CLEAR OF OBSTRUCTIONS 12 INCHES MINIMUM IN EACH DIRECTION and THE BASE SHALL BE CLEAR OF OBSTRUCTIONS 24 INCHES MINIMUM. THE SPACE SHALL BE PERMITTED TO INCLUDE KNEE and TOE CLEARANCE COMPLYING WITH SECTION 11B-306 ONLY AT THE END OF EITHER THE BASE or ONE ARM.



Door Swing:

DOOR SHALL BE PERMITTED TO SWING INTO TURNING SPACES.

4. CLEAR FLOOR or GROUND SPACE:

General:

CLEAR FLOOR or GROUND SPACE SHALL COMPLY WITH SECTION 11B-305.

Floor or Ground Surfaces:

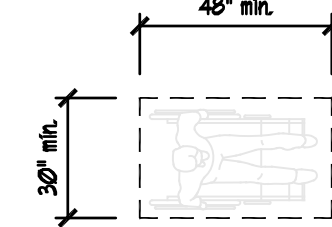
FLOOR or GROUND SURFACES OF A CLEAR FLOOR or GROUND SPACE SHALL COMPLY WITH SECTION 11B-302. CHANGES IN LEVEL ARE NOT PERMITTED.

Exception:

SLOPES NOT STEEPER THAN 1:48 SHALL BE PERMITTED.

Size:

THE CLEAR FLOOR or GROUND SPACE SHALL BE 30 INCHES MINIMUM BY 48 INCHES MINIMUM.

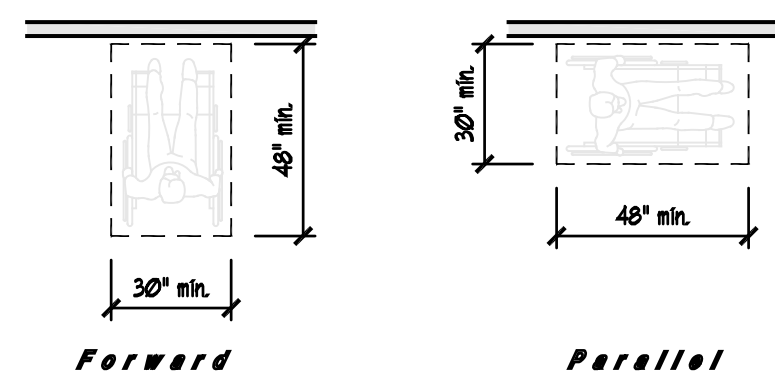


5. Knee & Toe Clearance:

UNLESS OTHERWISE SPECIFIED, CLEAR FLOOR or GROUND SPACE SHALL BE PERMITTED TO INCLUDE KNEE and TOE CLEARANCE COMPLYING WITH SECTION 11B-306.

Position:

UNLESS OTHERWISE SPECIFIED, CLEAR FLOOR or GROUND SPACE SHALL BE POSITIONED FOR EITHER FORWARD or PARALLEL APPROACH TO AN ELEMENT.



Approach:

ONE FULL UNOBSTRUCTED SIDE OF THE CLEAR FLOOR or GROUND SPACE SHALL ADJOIN AN ACCESSIBLE ROUTE or ADJOIN ANOTHER CLEAR FLOOR or GROUND SPACE.

Maneuvering Clearance:

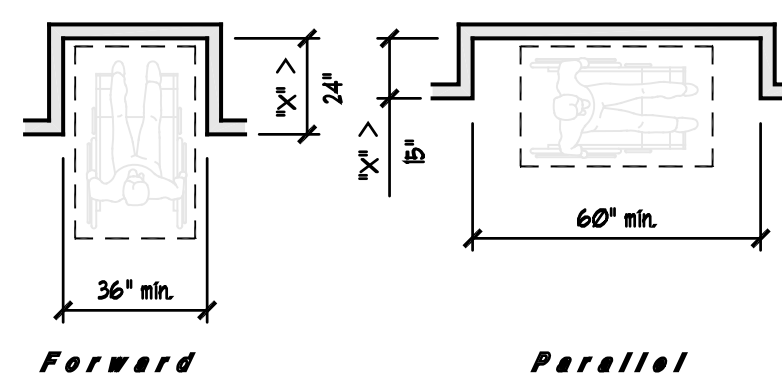
WHERE A CLEAR FLOOR or GROUND SPACE IS LOCATED IN AN ALCOVE or OTHERWISE CONFINED ON ALL or PART OF THREE SIDES, ADDITIONAL MANEUVERING CLEARANCE SHALL BE PROVIDED IN ACCORDANCE WITH SECTIONS 11B-305.1.1 and 11B-305.1.2.

Forward Approach:

ALCOVES SHALL BE 36 INCHES WIDE MINIMUM WHERE THE DEPTH EXCEEDS 24 INCHES.

Parallel Approach:

ALCOVES SHALL BE 60 INCHES WIDE MINIMUM WHERE THE DEPTH EXCEEDS 5 INCHES.

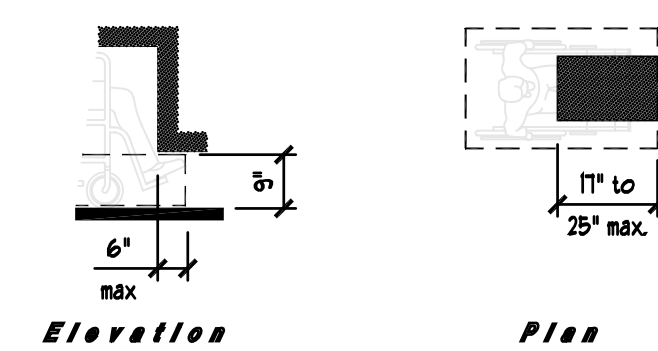


6. Knee & Toe Space:

WHERE SPACE BENEATH AN ELEMENT IS INCLUDED AS PART OF CLEAR FLOOR or GROUND SPACE or TURNING SPACE, THE SPACE SHALL COMPLY WITH SECTION 11B-306. ADDITIONAL SPACE SHALL NOT BE PROHIBITED BENEATH AN ELEMENT BUT SHALL NOT BE CONSIDERED AS PART OF THE CLEAR FLOOR or GROUND SPACE or TURNING SPACE.

Toe Clearance:

SPACE UNDER AN ELEMENT BETWEEN THE FINISH FLOOR or GROUND and 9 INCHES ABOVE THE FINISH FLOOR or GROUND SHALL BE CONSIDERED TOE CLEARANCE and SHALL COMPLY WITH SECTION 11B-306.2.



Maximum Depth

TOE CLEARANCE SHALL EXTEND 25 INCHES MAXIMUM UNDER AN ELEMENT.

Exception:

TOE CLEARANCE SHALL EXTEND 19 INCHES MAXIMUM UNDER LAVATORIES REQUIRED TO BE ACCESSIBLE BY SECTION 11B-213.4.

Minimum Required Depth:

WHERE TOE CLEARANCE IS REQUIRED AT AN ELEMENT AS PART OF A CLEAR FLOOR or GROUND SPACE, THE TOE CLEARANCE SHALL EXTEND 11 INCHES MINIMUM UNDER THE ELEMENT.

Exception:

THE TOE CLEARANCE SHALL EXTEND 19 INCHES MINIMUM UNDER SINKS REQUIRED TO BE ACCESSIBLE BY SECTION 11B-212.3.

THE TOE CLEARANCE SHALL EXTEND 19 INCHES MINIMUM UNDER BUILT-IN DINING and WORK SURFACES REQUIRED TO BE ACCESSIBLE BY SECTION 11B-216.1.

7. Additional Clearance:

SPACE EXTENDING GREATER THAN 6 INCHES BEYOND THE AVAILABLE KNEE CLEARANCE AT 9 INCHES ABOVE THE FINISH FLOOR or GROUND SHALL NOT BE CONSIDERED TOE CLEARANCE.

8. Width:

TOE CLEARANCE SHALL BE 30 INCHES WIDE MINIMUM.

9. Knee Clearance:

SPACE UNDER AN ELEMENT BETWEEN 9 INCHES and 21 INCHES ABOVE THE FINISH FLOOR or GROUND SHALL BE CONSIDERED KNEE CLEARANCE and SHALL COMPLY WITH SECTION 11B-306.3

Exception:

AT LAVATORIES REQUIRED TO BE ACCESSIBLE BY SECTION 11B-213.4, SPACE BETWEEN 9 INCHES and 29 INCHES ABOVE THE FINISH FLOOR or GROUND, SHALL BE CONSIDERED KNEE CLEARANCE.

10. Maximum Depth:

KNEE CLEARANCE SHALL EXTEND 25 INCHES MAXIMUM UNDER AN ELEMENT AT 9 INCHES ABOVE THE FINISH FLOOR or GROUND.

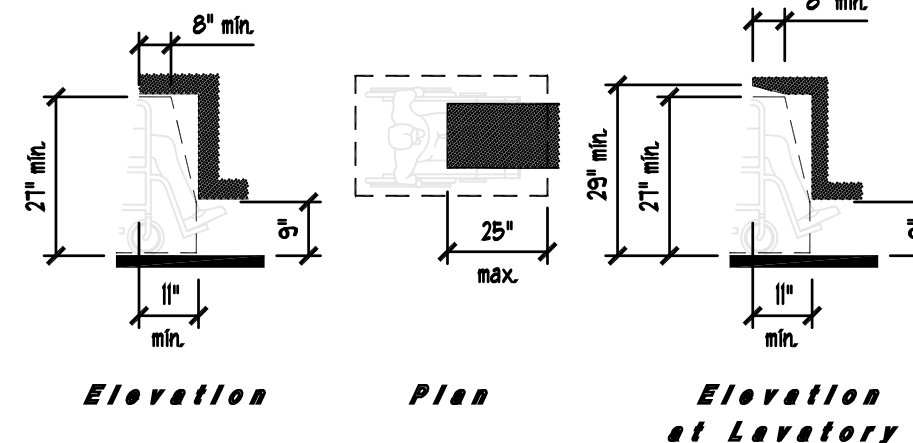
11. Minimum Required Depth:

WHERE KNEE CLEARANCE IS REQUIRED UNDER AN ELEMENT AS PART OF A CLEAR FLOOR or GROUND SPACE, THE KNEE CLEARANCE SHALL BE 11 INCHES DEEP MINIMUM AT 9 INCHES ABOVE THE FINISH FLOOR or GROUND, and 8 INCHES DEEP MINIMUM AT 21 INCHES ABOVE THE FINISH FLOOR or GROUND.

Exceptions:

AT LAVATORIES REQUIRED TO BE ACCESSIBLE BY SECTION 11B-213.4, THE KNEE CLEARANCE SHALL BE 21 INCHES HIGH MINIMUM ABOVE THE FINISH FLOOR or GROUND AT A DEPTH OF 8 INCHES MINIMUM INCREASING TO 29 INCHES HIGH MINIMUM ABOVE THE FINISH FLOOR or GROUND AT THE FRONT EDGE of a COUNTER WITH a BUILT-IN LAVATORY or at the FRONT EDGE of a WALL-MOUNTED LAVATORY FIXTURE.

AT DINING or WORK SURFACES REQUIRED TO BE ACCESSIBLE BY SECTION 11B-216.1, KNEE CLEARANCE SHALL EXTEND 19 INCHES DEEP MINIMUM 21 INCHES ABOVE THE FINISH FLOOR or GROUND.



12. Clearance Reduction:

BETWEEN 9 INCHES and 21 INCHES ABOVE THE FINISH FLOOR or GROUND, THE KNEE CLEARANCE SHALL BE PERMITTED TO REDUCE AT A RATE OF 1 INCH IN DEPTH FOR EACH 6 INCHES IN HEIGHT.

Exception:

THE KNEE CLEARANCE SHALL NOT BE REDUCED AT BUILT-IN DINING and WORK SURFACES REQUIRED TO BE ACCESSIBLE BY SECTION 11B-216.1.

13. Width:

KNEE CLEARANCE SHALL BE 30 INCHES WIDE MINIMUM.

14. Protruding Objects:

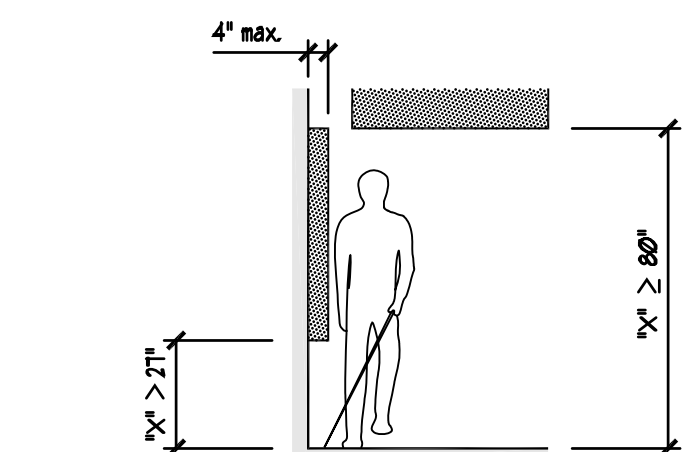
PROTRUDING OBJECTS SHALL COMPLY WITH SECTION 11B-307.

15. Protrusion Limits:

OBJECTS WITH LEADING EDGES MORE THAN 21 INCHES and NOT MORE THAN 80 INCHES ABOVE THE FINISH FLOOR or GROUND SHALL PROTRUDE 4 INCHES MAXIMUM HORIZONTALLY INTO THE CIRCULATION PATH.

Exception:

HANDRAILS SHALL BE PERMITTED TO PROTRUDE 4 INCHES MAXIMUM.



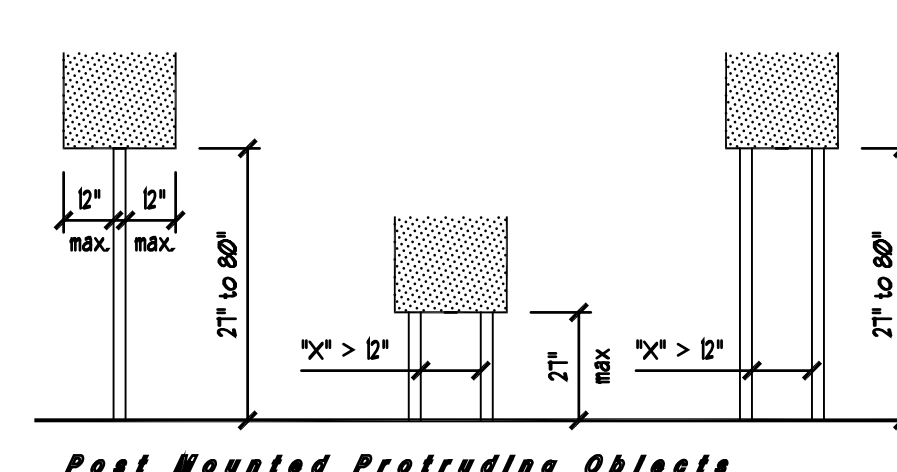
Limits of Protruding Objects

16. Post-Mounted Objects:

FREE STANDING OBJECTS MOUNTED ON POSTS or PYLONS SHALL OVERHANG CIRCULATION PATHS 12 INCHES MAXIMUM WHEN LOCATED 21 INCHES MINIMUM and 80 INCHES MAXIMUM ABOVE THE FINISH FLOOR or GROUND. WHERE A SIGN or OTHER OBSTRUCTION IS MOUNTED BETWEEN POSTS or PYLONS and the CLEAR DISTANCE BETWEEN THE POSTS or PYLONS IS GREATER THAN 12 INCHES, THE LOWER EDGE of SUCH SIGN or OBSTRUCTION SHALL BE 21 INCHES MAXIMUM or 80 INCHES MINIMUM ABOVE THE FINISH FLOOR or GROUND.

Exception:

THE SLOPING PORTION of HANDRAILS SERVING STAIRS and RAMPS SHALL NOT BE REQUIRED TO COMPLY WITH SECTION 11B-307.3.



Post Mounted Protruding Objects

17. Edges & Corners:

WHERE SIGNS or OTHER OBJECTS ARE MOUNTED ON POSTS or PYLONS, and THEIR BOTTOM EDGES ARE LESS THAN 80 INCHES ABOVE THE FLOOR or GROUND SURFACE, THE EDGES of SUCH SIGNS and OBJECTS SHALL BE ROUNDED or EASED and THE CORNERS SHALL HAVE A MINIMUM RADIUS of 1/8 INCH.

18. Vertical Clearances:

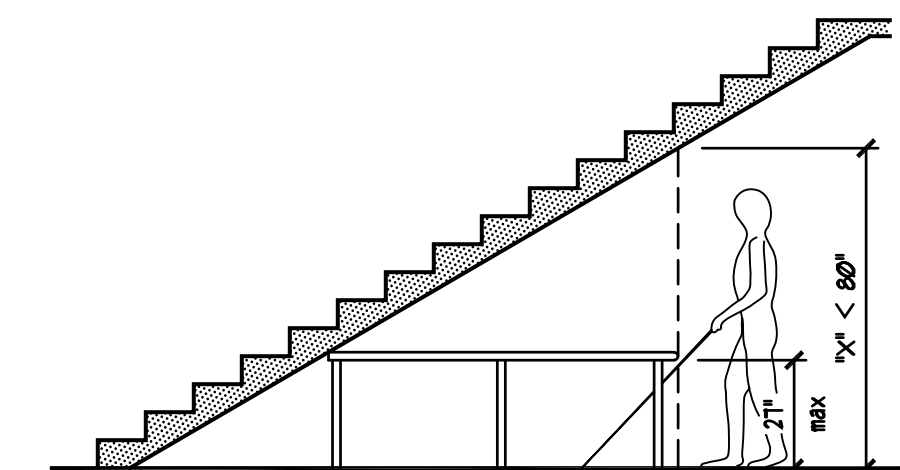
VERTICAL CLEARANCE SHALL BE 80 INCHES HIGH MINIMUM. GUARDRAILS or OTHER BARRIERS SHALL BE PROVIDED WHERE THE VERTICAL CLEARANCE IS LESS THAN 80 INCHES HIGH. THE LEADING EDGE of SUCH GUARDRAIL or BARRIER SHALL BE LOCATED 21 INCHES MAXIMUM ABOVE THE FINISH FLOOR or GROUND. WHERE A GUY SUPPORT IS USED PARALLEL TO A CIRCULATION PATH INCLUDING BUT NOT LIMITED TO SIDEWALKS, A GUY BRACE, SIDEWALK GUY or SIMILAR DEVICE SHALL BE USED TO PREVENT AN OVERHANGING OBSTRUCTION.

Exceptions:

DOOR CLOSERS and DOOR STOPS SHALL BE PERMITTED TO BE 18 INCHES MINIMUM ABOVE THE FINISH FLOOR or GROUND.

19. Required Clear Width:

PROTRUDING OBJECTS SHALL NOT REDUCE THE CLEAR WIDTH REQUIRED FOR ACCESSIBLE ROUTES.



Vertical Clearance

20. Reach Range:

REACH RANGES SHALL COMPLY WITH SECTION 11B-308.

Electrical Switches:

CONTROLS and SWITCHES INTENDED TO BE USED BY THE OCCUPANT of a ROOM or AREA TO CONTROL LIGHTING and RECEPTACLE OUTLETS, APPLIANCES or COOLING, HEATING and VENTILATION EQUIPMENT, SHALL COMPLY WITH SECTION 11B-308 EXCEPT THE LOW REACH SHALL BE MEASURED TO THE BOTTOM OF THE OUTLET BOX and THE HIGH REACH SHALL BE MEASURED TO THE TOP OF THE OUTLET BOX.

Electrical Receptacle Outlets:

ELECTRICAL RECEPTACLE OUTLETS ON BRANCH CIRCUITS of 30 AMPERES or LESS and COMMUNICATION SYSTEM RECEPTACLES SHALL COMPLY WITH SECTION 11B-308 EXCEPT THE LOW REACH SHALL BE MEASURED TO THE BOTTOM OF THE OUTLET BOX and the HIGH REACH SHALL BE MEASURED TO THE TOP OF THE OUTLET BOX.

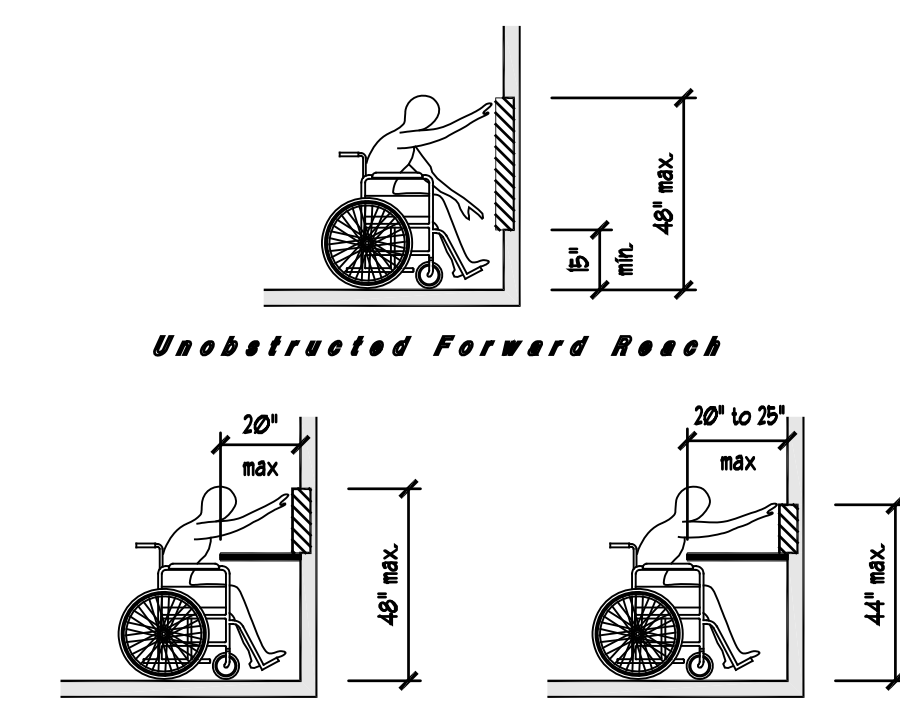
Forward Reach

UNOBSTRUCTED.

WHERE A FORWARD REACH IS UNOBSTRUCTED, THE HIGH FORWARD REACH SHALL BE 48 INCHES MAXIMUM and the LOW FORWARD REACH SHALL BE 15 INCHES MINIMUM ABOVE THE FINISH FLOOR or GROUND.

Obstructed - High Reach

WHERE A HIGH FORWARD REACH IS OVER AN OBSTRUCTION, THE CLEAR FLOOR SPACE SHALL EXTEND BENEATH THE ELEMENT FOR A DISTANCE NOT LESS THAN THE REQUIRED REACH DEPTH OVER THE OBSTRUCTION. THE HIGH FORWARD REACH SHALL BE 48 INCHES MAXIMUM WHEN THE REACH DEPTH IS 20 INCHES MAXIMUM. WHERE THE REACH DEPTH EXCEEDS 20 INCHES, THE HIGH FORWARD REACH SHALL BE 44 INCHES MAXIMUM and the REACH DEPTH SHALL BE 25 INCHES MAXIMUM.



Unobstructed High Forward Reach

Side Reach

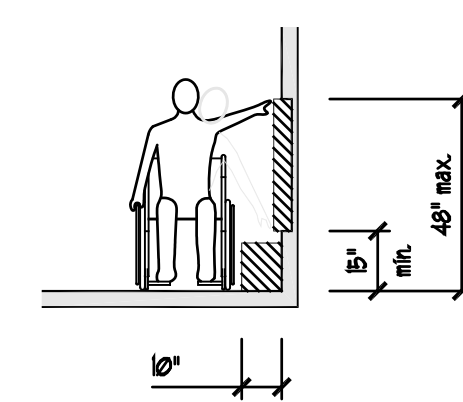
UNOBSTRUCTED.

WHERE A CLEAR FLOOR or GROUND SPACE ALLOWS A PARALLEL APPROACH TO AN ELEMENT and the SIDE REACH IS UNOBSTRUCTED, THE HIGH SIDE REACH SHALL BE 48 INCHES MAXIMUM and the LOW SIDE REACH SHALL BE 15 INCHES MINIMUM ABOVE THE FINISH FLOOR or GROUND.

Exception:

AN OBSTRUCTION SHALL BE PERMITTED BETWEEN THE CLEAR FLOOR or GROUND SPACE and the ELEMENT WHERE DEPTH of THE OBSTRUCTION IS 10 INCHES MAXIMUM.

OPERABLE PARTS of FUEL DISPENSERS SHALL BE PERMITTED TO BE 54 INCHES MAXIMUM MEASURED FROM THE SURFACE of the VEHICULAR WAY WHERE FUEL DISPENSERS ARE INSTALLED ON EXISTING CURBS.



Unobstructed Side Reach

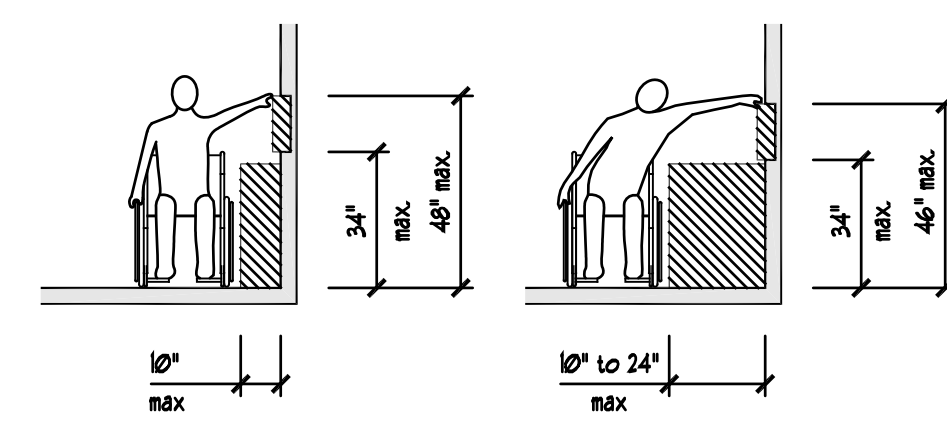
Obstructed High Reach

WHERE A CLEAR FLOOR or GROUND SPACE ALLOWS A PARALLEL APPROACH TO AN ELEMENT and the HIGH SIDE REACH IS OVER AN OBSTRUCTION, THE HEIGHT of the OBSTRUCTION SHALL BE 34 INCHES MAXIMUM and the DEPTH of the OBSTRUCTION SHALL BE 24 INCHES MAXIMUM. THE HIGH SIDE REACH SHALL BE 48 INCHES MAXIMUM FOR A REACH DEPTH of 10 INCHES MAXIMUM. WHERE THE REACH DEPTH EXCEEDS 10 INCHES, THE HIGH SIDE REACH SHALL BE 46 INCHES MAXIMUM FOR A REACH DEPTH of 24 INCHES MAXIMUM.

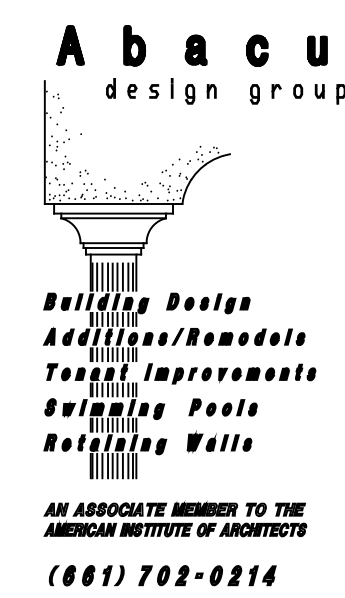
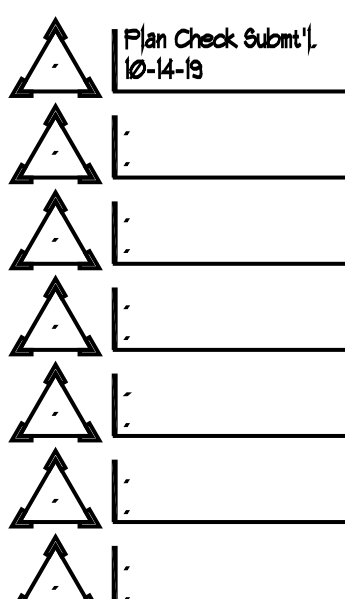
Exception:

THE TOP of WASHING MACHINES and CLOTHES DRYERS SHALL BE PERMITTED TO BE 36 INCHES MAXIMUM ABOVE THE FINISH FLOOR.

OPERABLE PARTS of FUEL DISPENSERS SHALL BE PERMITTED TO BE 54 INCHES MAXIMUM MEASURED FROM THE SURFACE of the VEHICULAR WAY WHERE FUEL DISPENSERS ARE INSTALLED ON EXISTING CURBS.



Obstructed High Reach



3614 E. Fernak Hill Road
Covington, AL 36046

TENANT IMPROVEMENT FOR:
Belleau Wood Brewery Company
6 West Ivey Street
Lumberton, NC 28046

DATE:	10-14-19
DESIGNER:	
DRAWN/CHECKED:	Jr.
JOB NUMBER:	19005

Permit No.:

HANDICAP GENERAL NOTES

10/09/2018 13:30 Handicap Notes 2.dwg