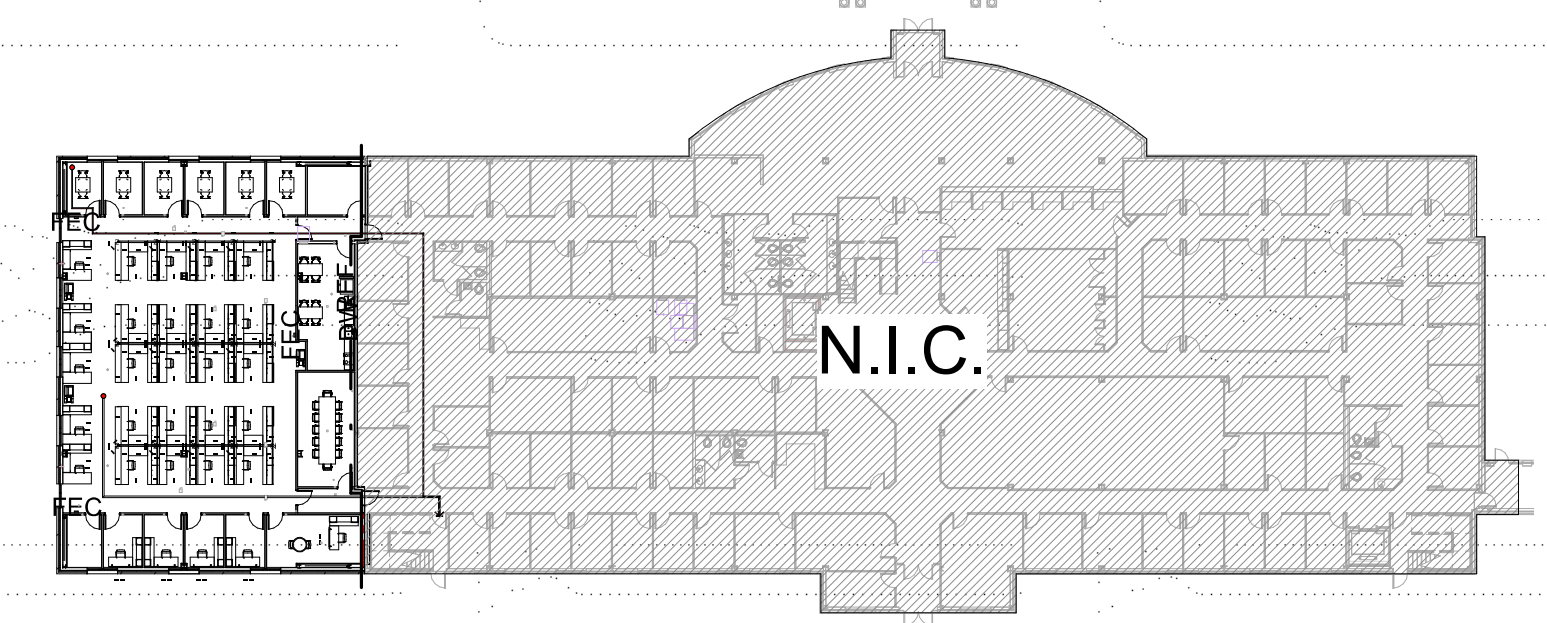


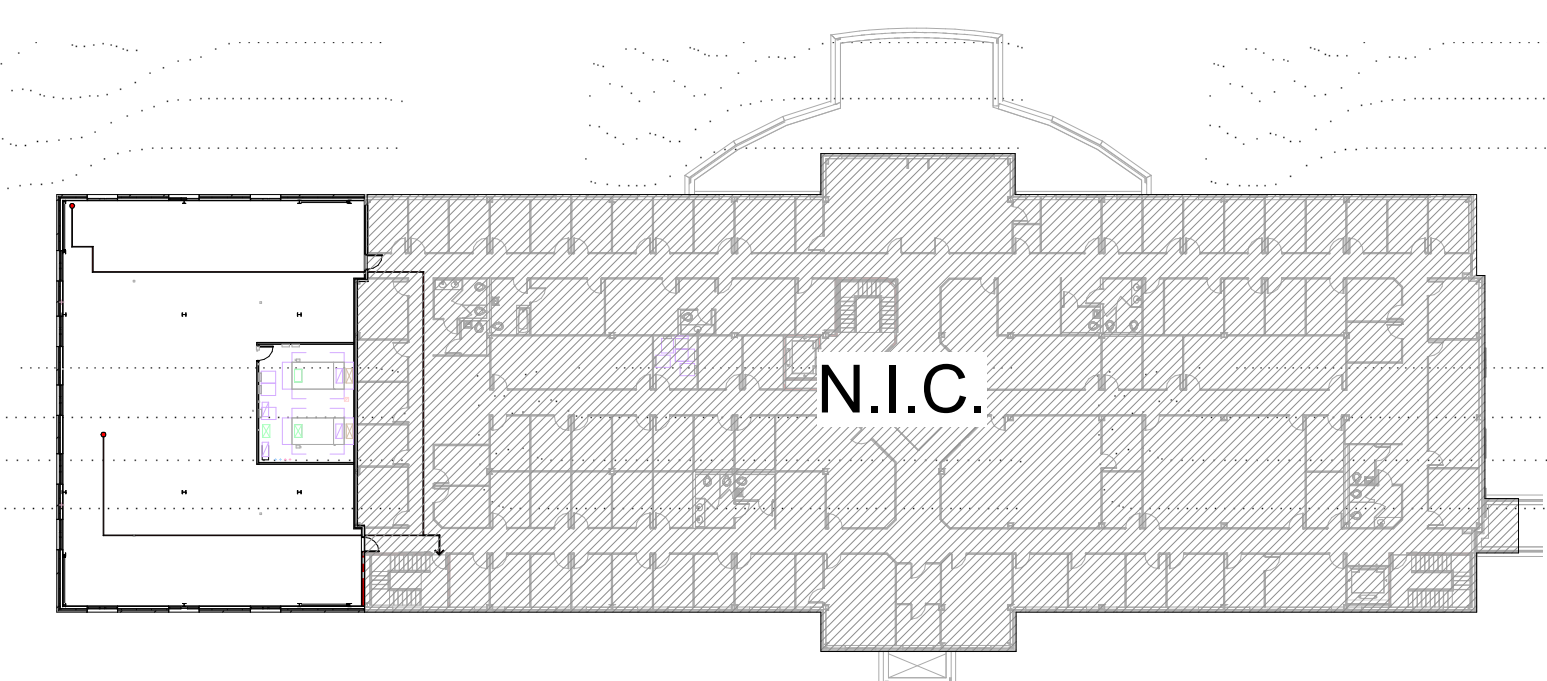
HARNETT COUNTY DSS ADDITION

307 W Cornelius Harnett Blvd, Lillington, NC

CONSTRUCTION DOCUMENTS - 06/28/19



01_FIRST FLOOR KEY PLAN
1" = 40'-0"



02_SECOND FLOOR KEY PLAN
1" = 40'-0"



VICINITY PLAN
NOT TO SCALE

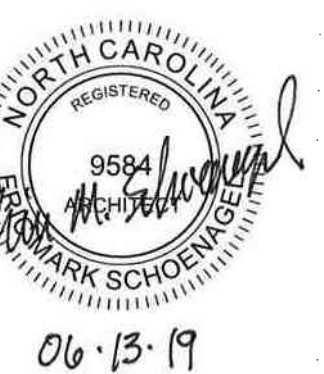
LITTLE
DIVERSIFIED ARCHITECTURAL CONSULTING

5815 Westpark Drive
Charlotte, NC 28217
T: 704.525.6350

www.littleonline.com

This drawing and the design shown are the property of Little Diversified Architectural Consulting. The reproduction, copying or other use of this drawing without their written consent is prohibited and any infringement will be subject to legal action.

© Little 2017



ISSUE FOR
CONSTRUCTION DOCUMENTS

ISSUE DATE
06/28/2019

REVISIONS NO.	REASON	DATE

PROJECT TEAM
PRINCIPAL IN CHARGE
Julie M. McLaurin, AIA
PROJECT MANAGER
Eric Schoenagel, AIA
DESIGN TEAM
LITTLE
PROGRAM NAME
HARNETT COUNTY DSS ADDITION

PROJECT NO.
514806600
SHEET TITLE
COVER SHEET

SHEET NUMBER
CS

OWNER

Harnett County
307 West Cornelius
Harnett Blvd
Lillington, NC
910-893-7555
STEVE WARD

ARCHITECT

LITTLE
410 Blackwell Street
Durham, NC 27701
919-474-2500
ERIC SCHOENAGEL, AIA

CIVIL

Dewberry
2610 Wycliff Road
Raleigh, NC 27607
919-424-3730
MATT WEST, PE

LANDSCAPE

Dewberry
2610 Wycliff Road
Raleigh, NC 27607
984-833-4833
BENTLEY RUGGLES, RLA

STRUCTURAL

LITTLE
410 Blackwell Street
Durham, NC 27701
919-474-2500
SARAH MUSSER, PE

PLUMBING

Dewberry
2610 Wycliff Road
Raleigh, NC 27607
919-424-3728
EMMETT WILLIS, PE

MECHANICAL

Dewberry
2610 Wycliff Road
Raleigh, NC 27607
984-232-6803
JOHN TEETER, PE

ELECTRICAL

Dewberry
2610 Wycliff Road
Raleigh, NC 27607
919-424-3724
WILLIAM KEMP, PE

ABBREVIATIONS

Abbr.	Abbreviated Phrase	Abbr.	Abbreviated Phrase	Abbr.	Abbreviated Phrase
ACT	ACOUSTIC CEILING TILE	FOS	FACE OF SHEATHING	PEB	PEDESTAL, PEDESTRIAN, PEDIATRIC
ADA	AMERICANS WITH DISABILITIES ACT	FR	FIRE RETARDANT TREATED	PER	PERFORATED
ADJ	ADJUSTABLE	FT	FOOT, FEET	PFB	PREFABRICATE(D)
AED	AUTOMATED EXTERNAL DEFIBRILLATOR	FURR	FURR(ED), (ING)	PFN	PREFINISH(ED)
AFB	ABOVE FINISH FLOOR	FUT	FUTURE	PL, PLAM	PLASTIC LAMINATE
AL	ALUMINUM	FWC	FABRIC WALL COVERING	PLAS	PLASTER, PLASTIC
ALT	ALTERNATE	FWP	FABRIC WRAPPED PANEL	PLYW	PLYWOOD
AMC	ACOUSTICAL METAL CEILING	GA	GAUGE	PNL	PANEL
APPROX	APPROXIMATE	GALV	GALVANIZED	PNT	PAINT(ED)
ARCH	ARCHITECTURAL	GB	GLASS BOARD	PR	PAIR
AWC	ACOUSTICAL WOOD CEILING	GC	GENERAL CONTRACTOR	PT	PRESSURE TREAT(ED)
		GL	GLASS, GLAZING	PTN	PARTITION
		GR	GROUT	QT	QUARRY TILE, QUART
BBD	BULLETIN BOARD	GRAN	GRANITE	RB	RUBBER BASE
BD	BOARD	GWB	GYPSPUM WALL BOARD	RBT	RUBBER TILE
BO	BOTTOM OF	GYP	GYPSPUM	REC	RECEPTACLE
BOT	BOTTOM			REF	REFERENCE, REFER
		HC	HOLLOW CORE	REFR	REFRIGERATOR
CL, CL	CENTERLINE	HDR	HEADER	REMO	REMOVE
CAB	CABINET	HDW	HARDWARE	REQD	REQUIRED
CC	CURB/CURLE CURTAIN	HGT	HEIGHT	RM	ROOM
CIR	CIRCLE	HORIZ	HORIZONTAL(LY)	RS	RESILIENT
CLG	CEILING	HR	HOUR	S&R	SHELF AND ROD
CLOS	CLOSET	HVAC	HEATING, VENTILATION, AND AIR CONDITIONING	SCW	SOLID CORE WOOD
CLR	CLEARANCE	HW	HARDWOOD	SECT	SECTION
COL	COLUMN	IBC	INTERNATIONAL BUILDING CODE	SF	SQUARE FEET
CON	CONCRETE	ID	INSIDE DIAMETER	SFRM	SPRAYED FIRE RESISTIVE MATERIAL
CONC	CONCRETE	INCL	INCLUDE(D), (ING)	SHR	SHOWER
CONST	CONSTRUCTION	INSUL	INSULATE(D), (ING)	SIM	SIMILAR
CONT	CONTINUOUS / CONTINUE	INT	INTERIOR	SPEC	SPECIFICATION(S)
CONTR	CONTRACTOR	JAN	JANITOR'S CLOSET	SS	STAINLESS STEEL
COORD	COORDINATE	JT	JOINT	SSM	SOLID SURFACE MATERIAL
CPT	CARPET	KIT	KITCHEN	ST	STONE
CRB	COVERED RUBBER BASE	KPL	KICK PLATE	STD	STANDARD
CT	CERAMIC OR PORCELAIN TILE	L	LENGTH	STOR	STORAGE
CTR	CENTER	LAM	LAMINATE(D)	SUSP	SUSPENDED
		LBL	LABEL	SUSP CLG	SUSPENDED CEILING
D	DRYER	LCKR	LOCKER	SV	SHEET VINYL
DBL	DOUBLE	LN	LINOLEUM	SYS	SYSTEM
DEG	DEGREE	LT	LIGHT	TEMP	TEMPERED, TEMPORARY
DEMO	DEMOLISH / DEMOLITION	LVL	LAMINATED VENEER LUMBER	TMT	TO MATCH EXISTING
DET, DTL	DETAIL	LVT	LUXURY VINYL TILE	TYP	TYPICAL
DIA	DIAMETER			UNO	UNLESS NOTED OTHERWISE
DIM	DIMENSION			VB	VINYL BASE
DR	DOOR			VCT	VINYL COMPOSITE TILE
DS	DOWNSPOUT			VERT	VERTICAL(LY)
DWG	DRAWING(S)			VIF	VERIFY IN FIELD
DWN	DOWN			VIN	VINYL
DWR	DRAWER			VT	VINYL TILE
				VWC	VINYL WALL COVERING
EA	EACH			W	WIDTH
EL	ELEVATION			W	WITH
ELEC	ELECTRICAL			WO	WITHOUT
ELEV	ELEVATOR			WB	WOOD BASE
EOS	EDGE OF SLAB			WC	WATER CLOSET
EP	EPOXY FLOORING			WD	WOOD
EQ	EQUAL(LY)			WGT	WEIGHT
EQPT	EQUIPMENT			WIN	WINDOW
EW	EACH WAY			WTW	WALL TO WALL
EWV	ELECTRIC WATER COOLER				
EXIST	EXISTING				
EXP	EXPANSION				
EXT	EXTERIOR				
FAAP	FIRE ALARM ANNUNCIATOR PANEL				
FBO	FURNISHED BY OTHERS				
FE	FIRE EXTINGUISHER				
FEC	FIRE EXTINGUISHER CABINET				
FF	FINISH FLOOR				
FIN	FINISH(ED)				
FLR	FLOOR(ING)				
FLUOR	FLUORESCENT				
FO	FACE OF				
FOB	FACE OF BRICK				
FOG	FACE OF GLASS				

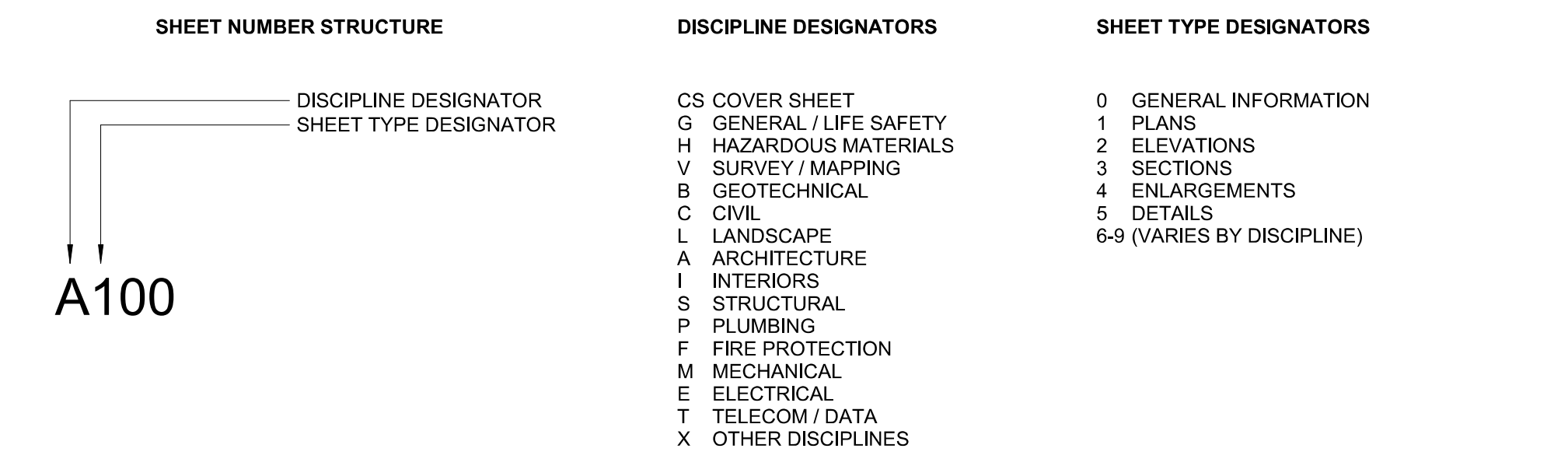
LIST OF DRAWING SHEETS

Sheet Number	Sheet Name	Current Revision	Sheet Number	Sheet Name	Current Revision
M-602	MECHANICAL CONTROLS				
00 - COVERSHEET					
CS	COVER SHEET				
01 - GENERAL / LIFE SAFETY					
G001	GENERAL INFORMATION AND SHEET INDEX				
G002	BUILDING CODE SUMMARY				
G111	LIFE SAFETY PLAN - LEVEL 01				
G112	LIFE SAFETY PLAN - LEVEL 02				
04 - ARCHITECTURE					
A010	WALL TYPES - INTERIOR PARTITIONS				
AD111	DEMOLITION FLOOR PLAN				
A111	FLOOR PLANS AND ELEVATION				
A112	ROOF PLAN				
A121	REFLECTED CEILING PLANS				
A210	EXTERIOR ELEVATIONS				
A310	BUILDING SECTIONS				
A320	WALL SECTIONS				
A511	PLAN DETAILS				
A521	SECTION DETAILS				
A811	FINISH PLANS AND SCHEDULE				
A900	DOOR SCHEDULE				
A910	DOOR AND FRAME TYPES				
06 - STRUCTURAL					
S001	GENERAL NOTES				
S101	STRUCTURAL PLANS				
S201	ELEVATIONS				
S301	FOUNDATION DETAILS				
S302	FOUNDATION DETAILS				
S311	FLOOR FRAMING DETAILS				
S312	FLOOR FRAMING DETAILS				
S321	ROOF FRAMING DETAILS				
08-PLUMBING					
P-001	PLUMBING SYMBOLS, ABBREVIATIONS & NOTES				
P-111	FIRST AND SECOND FLOOR PLUMBING PLAN				
P-131	ROOF PLUMBING PLAN				
P-601	SCHEDULES AND DIAGRAMS				
09-MECHANICAL					
M-001	MECHANICAL SYMBOLS, ABBREVIATIONS & NOTES				
M-111	FIRST AND SECOND FLOOR DUCTWORK PLAN				
M-201	FIRST AND SECOND FLOOR PIPING PLAN				
M-301	ROOF MECHANICAL PLAN				
M-401	MECHANICAL SECTION VIEWS				
M-501	MECHANICAL DETAILS				
M-502	MECHANICAL DETAILS				
M-601	MECHANICAL CONTROLS				
M-603	MECHANICAL CONTROLS				
M-701	MECHANICAL SCHEDULES				
10-ELECTRICAL					
E-001	ELECTRICAL SYMBOLS, ABBREVIATIONS & NOTES				
E-002	ELECTRICAL SYMBOLS, ABBREVIATIONS & NOTES				
E-111	FIRST AND SECOND FLOOR LIGHTING PLAN				
E-112	FIRST AND SECOND FLOOR EQUIPMENT PLAN				
E-113	FIRST AND SECOND FLOOR POWER & LOW VOLTAGE PLAN				
E-401	RISER DIAGRAMS				
E-501	DETAILS				
E-601	SCHEDULES AND DIAGRAMS				

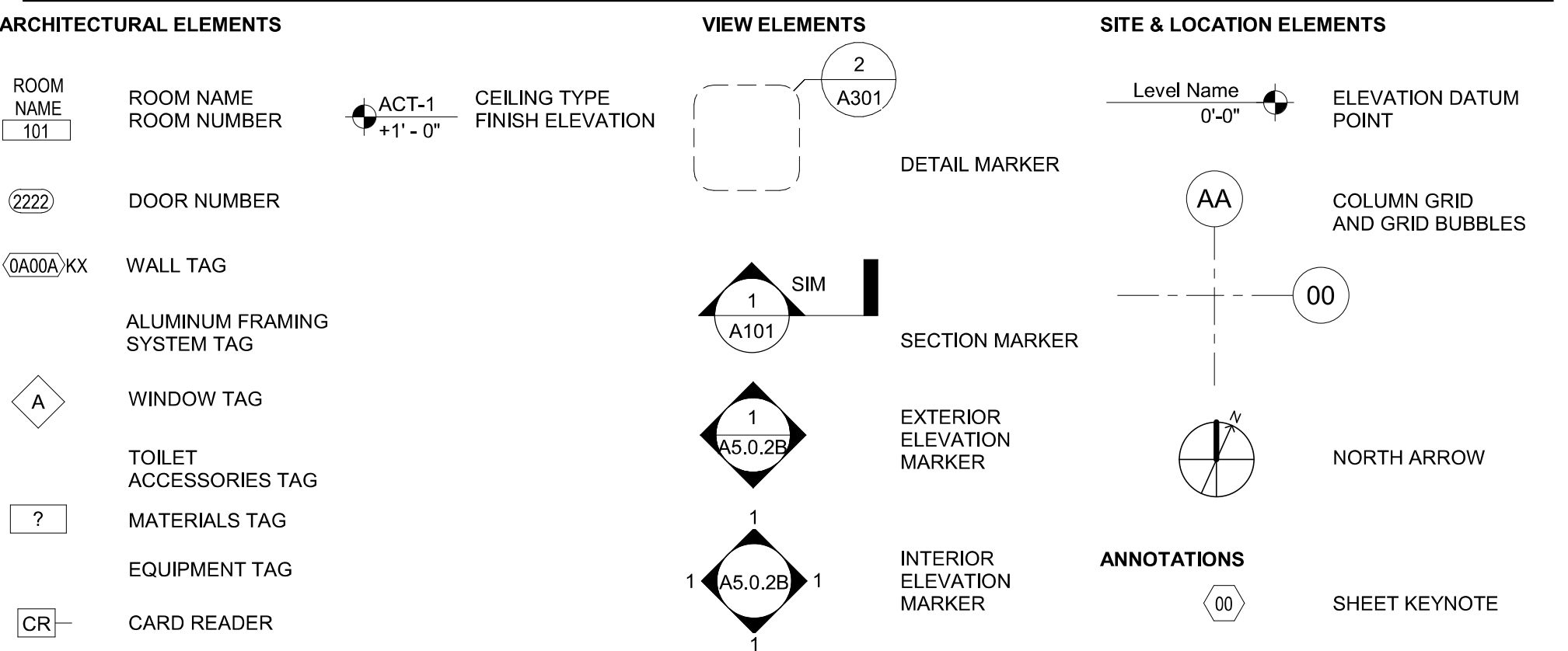
GENERAL NOTES

- WHERE NEW PARTITION ALIGNS WITH THE FACE OF AN EXISTING FURRED COLUMN OR PARTITION, REMOVE CORNER BEAD, TAPE AND SPACKLE NEW PARTITION TO EXISTING GYPSPUM BOARD.
- ALL EXISTING WALL SURFACES AND PARTITIONS TO REMAIN SHALL BE PATCHED, SPACKLED AND SANDED SMOOTH SO AS NOT TO LEAVE ANY EVIDENCE OF DEMOLITION OR REPAIR WORK. PREPARE SURFACES FOR NEW FINISHES AS REQUIRED.
- PROVIDE SEMI-RECESSED FIRE EXTINGUISHER CABINETS, SMOKE DETECTORS, AND ALL OTHER LIFE SAFETY DEVICES AS REQUIRED BY CODE. PROVIDE DRAWING SHOWING NUMBER, LOCATION, AND SPECIFICATION OF SUCH DEVICES FOR I&AA REVIEW PRIOR TO FRAMING OF WALLS. DO NOT PLACE IN FIRE RATED PARTITIONS.
- ALL WORK SHALL CONFORM TO THE CONTRACT DOCUMENTS WHICH INCLUDE THE OWNER/CONTRACTOR AGREEMENT, THE PROJECT MANUAL (WHICH CONTAINS THE GENERAL CONDITIONS, AND THE SPECIFICATIONS), THE DRAWINGS AND ALL ADDENDA AND MODIFICATIONS ISSUED BY THE ARCHITECT.
- THE CONTRACTOR SHALL REVIEW ALL DOCUMENTS AND VERIFY ALL DIMENSIONS AND FIELD CONDITIONS AND SHALL CONFIRM THAT WORK IS BUILDABLE AS SHOWN. ANY CONFLICTS OR OMISSIONS SHALL BE IMMEDIATELY REPORTED TO THE ARCHITECT FOR CLARIFICATION PRIOR TO THE PERFORMANCE OF ANY WORK IN QUESTION.
- CONTRACTOR SHALL COORDINATE WITH TENANT THE SCHEDULE FOR ALL TELEPHONE COMPANY AND DATA INSTALLATIONS.
- "ALIGN" SHALL MEAN TO ACCURATELY LOCATE FINISH FACES IN THE SAME PLANE.
- CONTRACTOR SHALL COORDINATE AND PROVIDE METAL BACKING PLATES OR SOLID WOOD BLOCKING (FIRE TREATED) IN PARTITIONS AND CEILINGS FOR ALL MILLWORK, WALL AND CEILING ATTACHED ITEMS AS REQUIRED BY EACH SPECIFIC ITEM.
- ALL WORK NOTED "BY OTHERS" OR "N/C" SHALL BE PROVIDED BY OWNER OR UNDER SEPARATE CONTRACT.
- DO NOT SCALE DRAWINGS. WRITTEN DIMENSIONS GOVERN. ALL PARTITION LOCATIONS, DIMENSIONS AND TYPES, ALL DOOR AND WINDOW LOCATIONS SHALL BE AS SHOWN ON PARTITION PLAN. IN CASE OF CONFLICT, NOTIFY ARCHITECT. PARTITION PLAN BY DESIGN INTENT ARCHITECT SUPERSEDES OTHER PLANS.
- ALL PARTITIONS ARE DIMENSIONED FROM FINISH FACE TO FINISH FACE, UNLESS OTHERWISE NOTED. ALL DIMENSIONS MARKED "CLEAR" SHALL BE MAINTAINED AND SHALL ALLOW FOR THICKNESS OF ALL FINISHES INCLUDING CARPET, CERAMIC TILE, VCT, ETC.
- PARTITIONS AT BUILDING PERIMETER SHALL BE CENTERED ON CENTER LINE OF COLUMN OR WINDOW MULLION, UNLESS OTHERWISE NOTED.
- COLUMN CENTER LINES (OR GRID LINES) ARE SHOWN FOR DIMENSIONING. VERIFY EXACT LOCATIONS IN FIELD.
- PARTITION TYPES ENCLOSING ROOMS AND SPACES SHALL BE CONTINUOUS THROUGHOUT ENTIRE ROOM OR SPACE.
- PROVIDE ACOUSTICAL CAULKING AROUND ALL PERIMETER EDGES AND/OR PENETRATIONS AT SOUND INSULATED WALLS. OFFSET ELECTRICAL AND TELEPHONE OUTLETS 16" MINIMUM IN SEPARATE STUD CAVITIES.

SHEET NUMBERING LEGEND



SYMBOLS



410 Blackwell Street, Suite 10
Durham, NC 27701
Tel: 919-474-2500

www.littleonline.com

This drawing and the design shown are the property of Little Diversified Architectural Consulting. The reproduction, copying or other use of this drawing without their written consent is prohibited and any infringement will be subject to legal action.

© Little 2018



ISSUE FOR
CONSTRUCTION DOCUMENTS

ISSUE DATE
06/28/2019

REVISIONS

NO.	REASON	DATE

PROJECT TEAM
PRINCIPAL IN CHARGE
Julie M. McLaurin, AIA
PROJECT MANAGER
Eric Schoenagel, AIA

DESIGN TEAM
LITTLE
PROJECT NAME
HARNETT COUNTY DSS ADDITION

PROJECT NO.
514806600

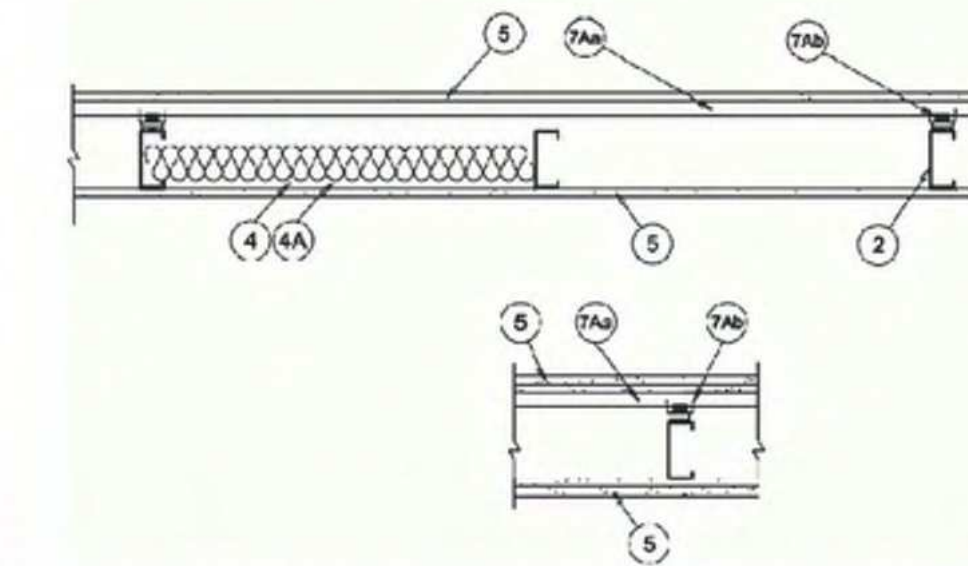
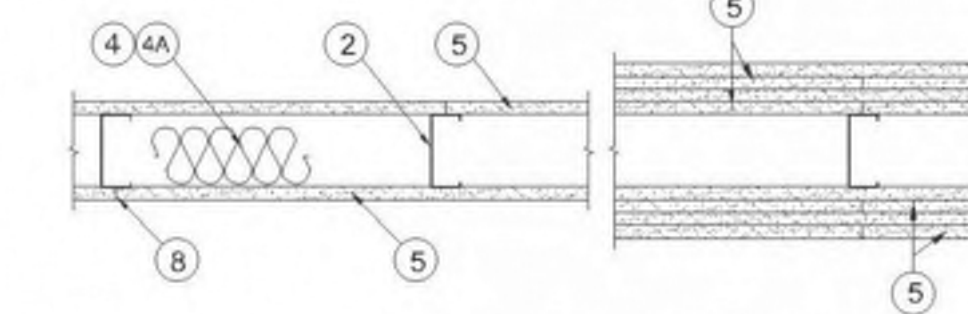
SHEET TITLE
GENERAL INFORMATION AND SHEET INDEX

SHEET NUMBER
G001

UL U419

Design No. U419
September 28, 2018

Nonbearing Wall Ratings — 1, 2, 3 or 4 Hr (See Items 4 & 5 through 5K)
* Indicates such products shall bear the UL or cUL Certification Mark for jurisdictions employing the UL or cUL Certification (such as Canada), respectively.



1. Floor and Ceiling Runners — (Not Shown) — For use with Item 2 — Channel shaped, fabricated from min 25 MSG corrosion-protected steel, min depth to accommodate stud size, with min 1-1/4 in. long legs, attached to floor and ceiling with fasteners 24 in. OC max.
1A. Framing Members — Floor and Ceiling Runner — (Not Shown) — In lieu of Item 1 — For use with Item 2B, proprietary channel shaped runners, 3-5/8 in. deep attached to floor and ceiling with fasteners 24 in. OC max. CALIFORNIA EXPANDED METAL PRODUCTS CO — Viper25™ Track

CRACO MFG INC — SmartTrack25™
MARINOWARE, DIV OF WARE INDUSTRIES INC — Viper25™ Track
FUSION BUILDING PRODUCTS — Viper25™ Track
IMPERIAL MANUFACTURING GROUP INC — Viper25™ Track

1B. Framing Members — Floor and Ceiling Runner — (Not Shown) — In lieu of Item 1 — For use with Item 2C, proprietary channel shaped runners, 3-1/4 in. wide by 3-5/8 in. deep fabricated from min D 0.18 in. thick galv steel, attached to floor and ceiling with fasteners spaced 24 in. OC max. CALIFORNIA EXPANDED METAL PRODUCTS CO — Viper20™ Track

MARINOWARE, DIV OF WARE INDUSTRIES INC — Viper20™ Track
FUSION BUILDING PRODUCTS — Viper20™ Track
IMPERIAL MANUFACTURING GROUP INC — Viper20™ Track

1C. Framing Members — Floor and Ceiling Runners — (Not Shown) — In lieu of Item 1 — Channel shaped, attached to floor and ceiling with fasteners 24 in. OC max. ALLSTEEL & GYPSUM PRODUCTS INC — Type SUPREME D24/30EQD and Type SUPREME D20

CONSOLIDATED FABRICATORS CORP. BUILDING PRODUCTS DIV — Type SUPREME D24/30EQD and Type SUPREME D20
QUAIL RUN BUILDING MATERIALS INC — Type SUPREME D24/30EQD and Type SUPREME D20

SCAFCO STEEL STUD MANUFACTURING CO — Type SUPREME D24/30EQD and Type SUPREME D20

STEEL CONSTRUCTION SYSTEMS INC — Type SUPREME D24/30EQD and Type SUPREME D20

UNITED METAL PRODUCTS INC — Type SUPREME D24/30EQD and Type SUPREME D20

1D. Floor and Ceiling Runners — (Not Shown) — For use with Item 2A — Channel shaped, fabricated from min 20 MSG corrosion-protected or galv steel, min depth to accommodate stud size, with min 1 in. long legs, attached to floor and ceiling with fasteners spaced max 24 in. OC.

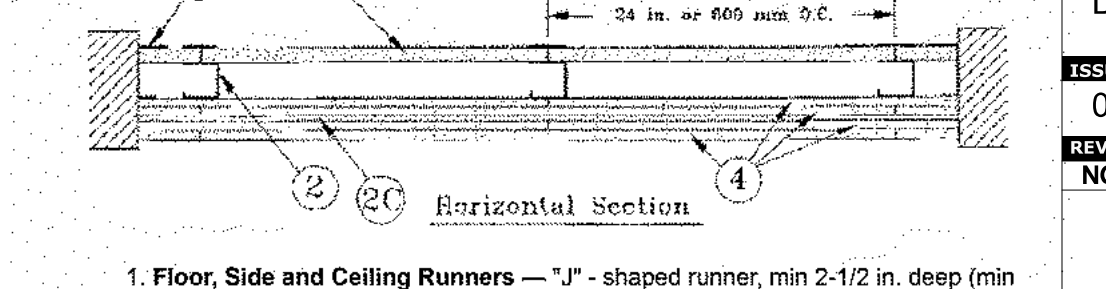
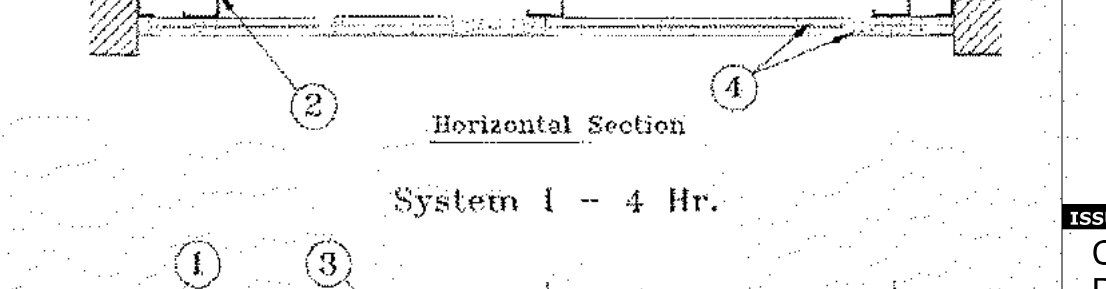
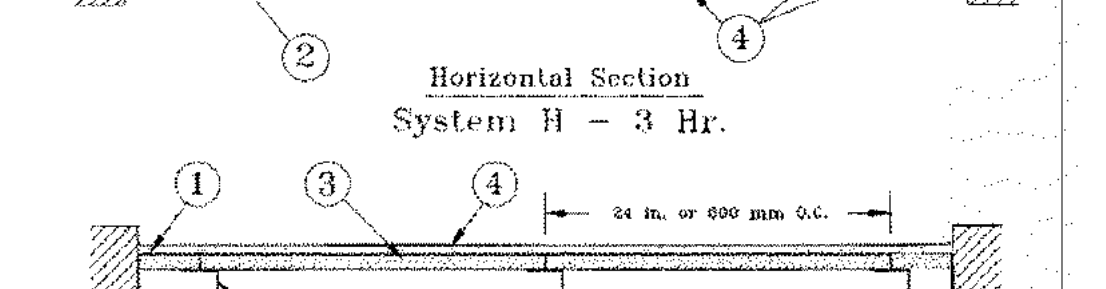
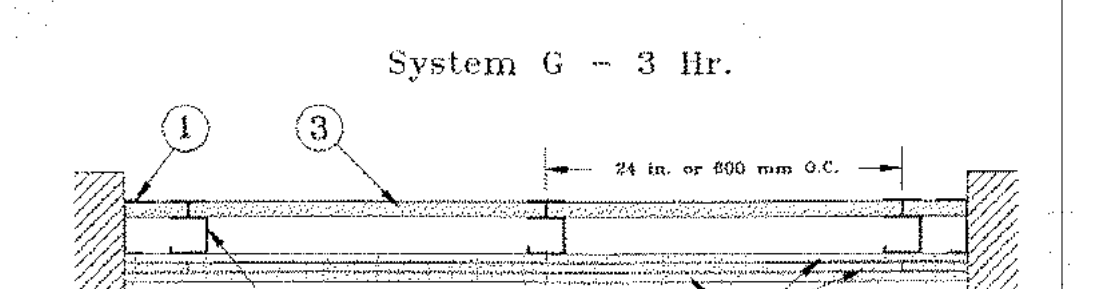
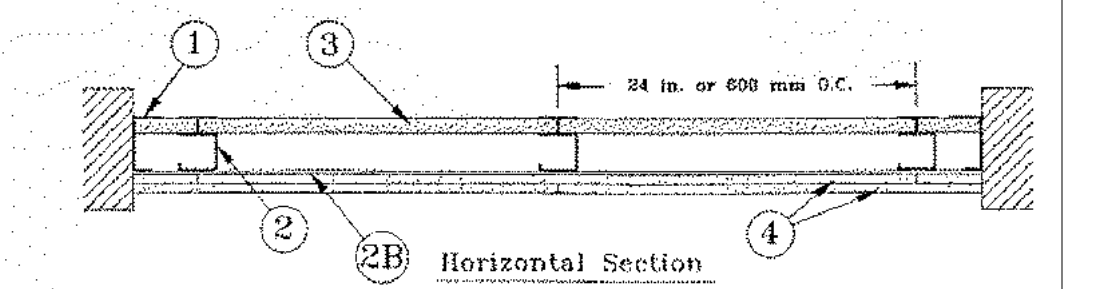
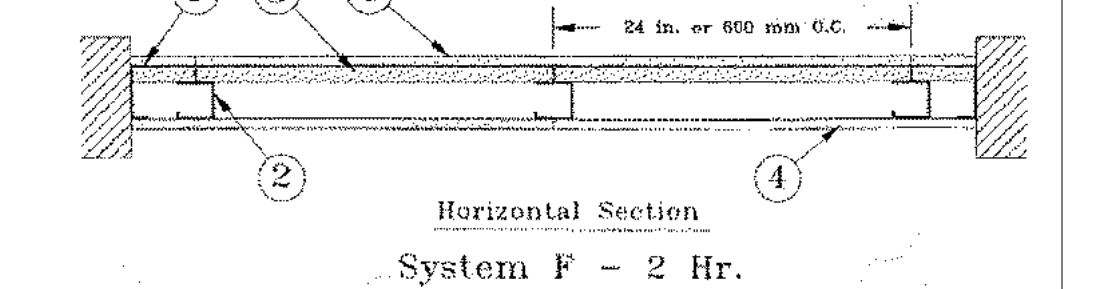
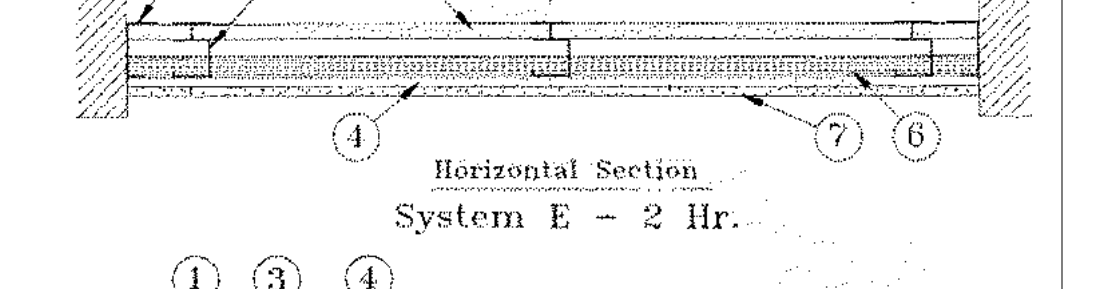
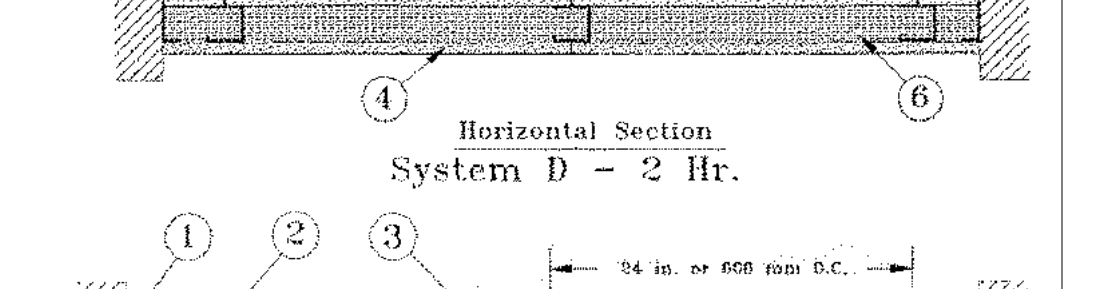
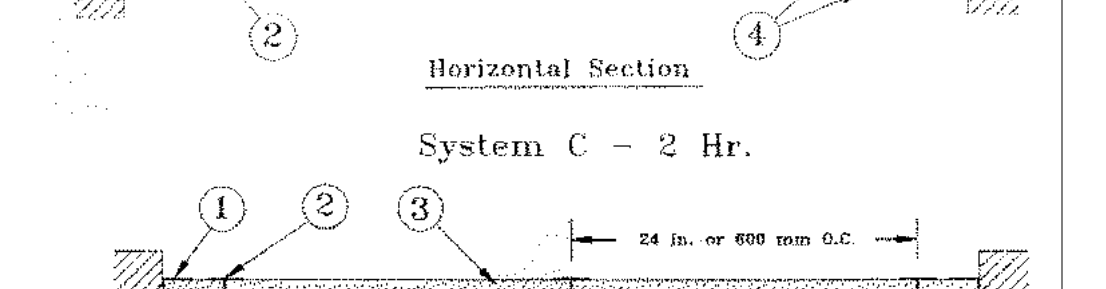
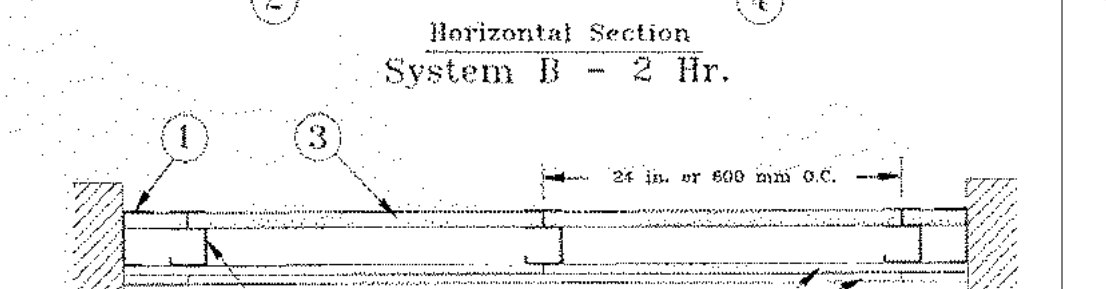
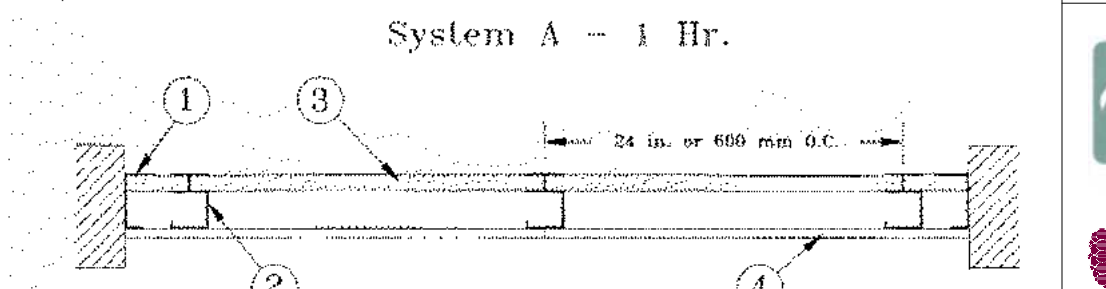
1E. Framing Members — Floor and Ceiling Runners — (Not Shown, As an alternate to Item 1) — For use with Items 2E, 5F or 5G or 5I only, channel shaped, fabricated from min. D.015 in. (min bare metal thickness) galvanized steel, attached to floor and ceiling with fasteners 24 in. OC max. CLARKDIETRICH BUILDING SYSTEMS — CD ProTRAK

DMFCWBS L L C — ProTRAK

UL U415

Design No. U415
September 27, 2018

Nonbearing Wall Ratings — 1, 2, 3 or 4 Hr
* Indicates such products shall bear the UL or cUL Certification Mark for jurisdictions employing the UL or cUL Certification (such as Canada), respectively.



1. Floor, Side and Ceiling Runners — "J" - shaped runner, min 2-1/2 in. deep (min 4 in. deep when System C is used), with unequal legs of 1 in. and 2 in., fabricated from min 24 MSG (min 20 MSG when Items 4A, 4B, 4C, 4D or 7 are used) galv steel. Runners positioned with short leg toward finished side of wall. Runners attached to structural supports with steel fasteners located not greater than 2 in. from ends and not greater than 24 in. OC. "E" - shaped studs (Item 2A) may be used as side runners in place of "J" - shaped runners.
2. Steel Studs — "C"-H" - shaped studs, min 2-1/2 in. deep (min 4 in. deep when System C is used), fabricated from min 25 MSG (min 20 MSG when Items 2D, 4A, 4B, 4C, 4D or 7 is used) galv steel. Cut to lengths 3/8 to 1/2 in. less than floor-to-ceiling height and spaced 24 in. or 600 mm OC (max 16 in. OC when Items 4A, 4B, 4C, or 4D are used).



06-13-19

ISSUE FOR CONSTRUCTION DOCUMENTS

ISSUE DATE 06/28/2019

REVISIONS NO.	REASON	DATE

PROJECT TEAM
PRINCIPAL IN CHARGE: Julie M. McLaurin, AIA
PROJECT MANAGER: Eric Schoenagel, AIA

DESIGN TEAM
LITTLE

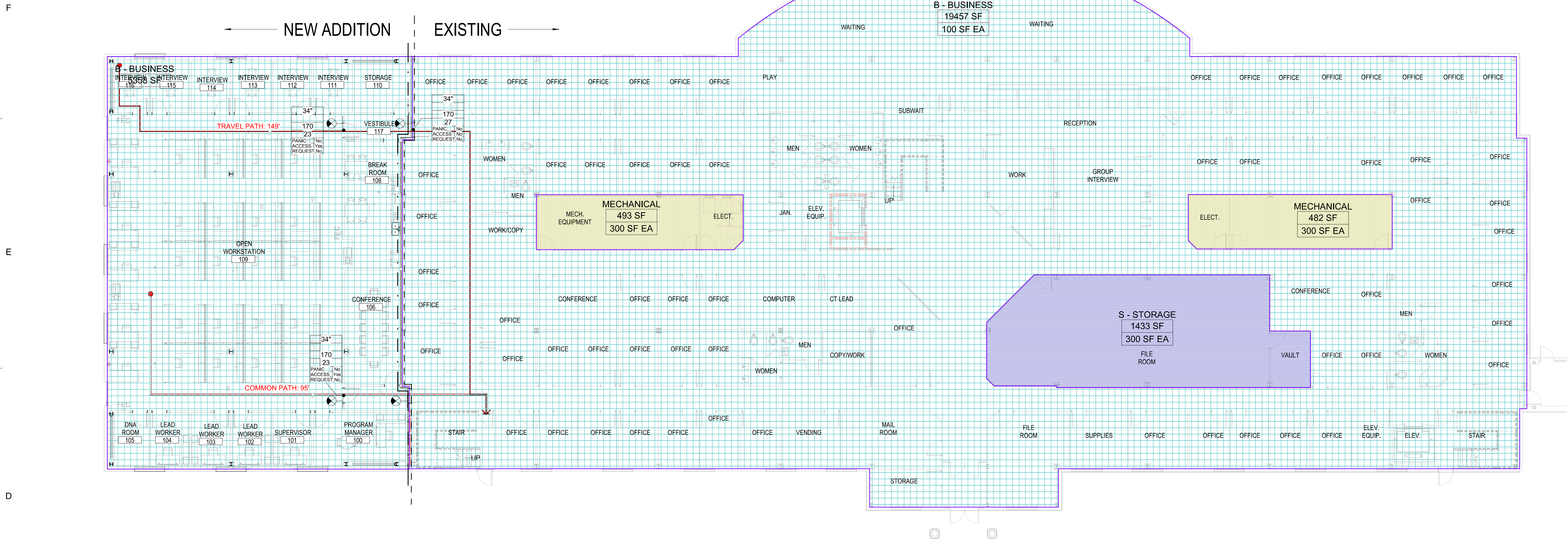
PROGRAM NAME
HARNETT COUNTY DSS ADDITION

PROJECT NO.
514806600

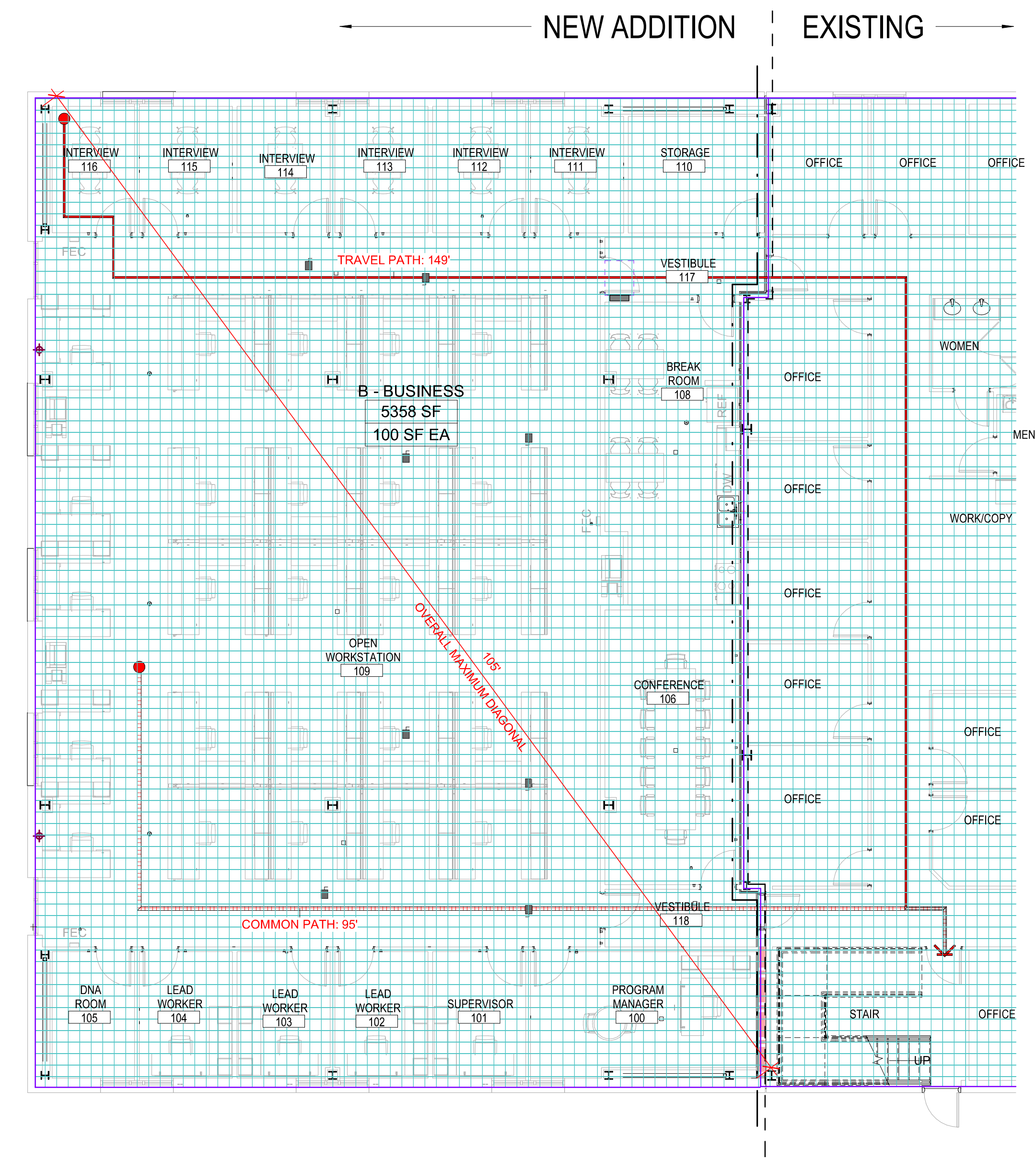
SHEET TITLE
FIRE RESISTANCE DESIGNS

SHEET NUMBER
G010

F
E
D
C
B
A



3 1ST FLOOR - LIFE SAFETY KEY PLAN
G111 3/32" = 1'-0"



4A 1ST FLOOR - LIFE SAFETY PLAN
G111 1/8" = 1'-0"

LIFE SAFETY AREA SCHEDULE - LEVELS 01 AND 02

LEVEL 01			
OCCUPANCY	AREA	LOAD FACTOR	OCCUPANT COUNT
BUSINESS	5358	100	54
LEVEL 02			
OCCUPANCY	AREA	LOAD FACTOR	OCCUPANT COUNT
BUSINESS	4841	100	48
MECHANICAL	510	300	2
BUILDING TOTAL			104

- 34" CLEAR OPENING WIDTH
- 0.2" CLEAR WIDTH PER OCCUPANT
- 170 OCCUPANT CAPACITY
- 75 ACTUAL OCCUPANT LOAD
- 75 PANIC HARDWARE
- ACCESS CONTROL DEVICE (E.G. CARD READER) REQUEST TO EXIT
- 34" CLEAR STAIR WIDTH
- 0.2" CLEAR WIDTH PER OCCUPANT
- 170 OCCUPANT CAPACITY
- 75 ACTUAL OCCUPANT LOAD
- TRAVEL DISTANCE SHOWN: 000' EXIT EGRESS DISTANCE
- TRAVEL DISTANCE SHOWN: 000' EXIT EGRESS COMMON PATH
- OVERALL DIAGONAL DIMENSION: 14' OVERALL DIAGONAL DISTANCE
- DISTANCE BETWEEN EXITS: 14' EXIT REMOTENESS DISTANCE
- CR CARD READER
- Area Name: 150 SF AREA, 100 SF EA LOAD FACTOR
- ILLUMINATED EXIT SIGN

SYMBOLS - LIFE SAFETY
NOT TO SCALE



ISSUE FOR: CONSTRUCTION DOCUMENTS

ISSUE DATE: 06/28/2019

REVISIONS: NO. REASON DATE

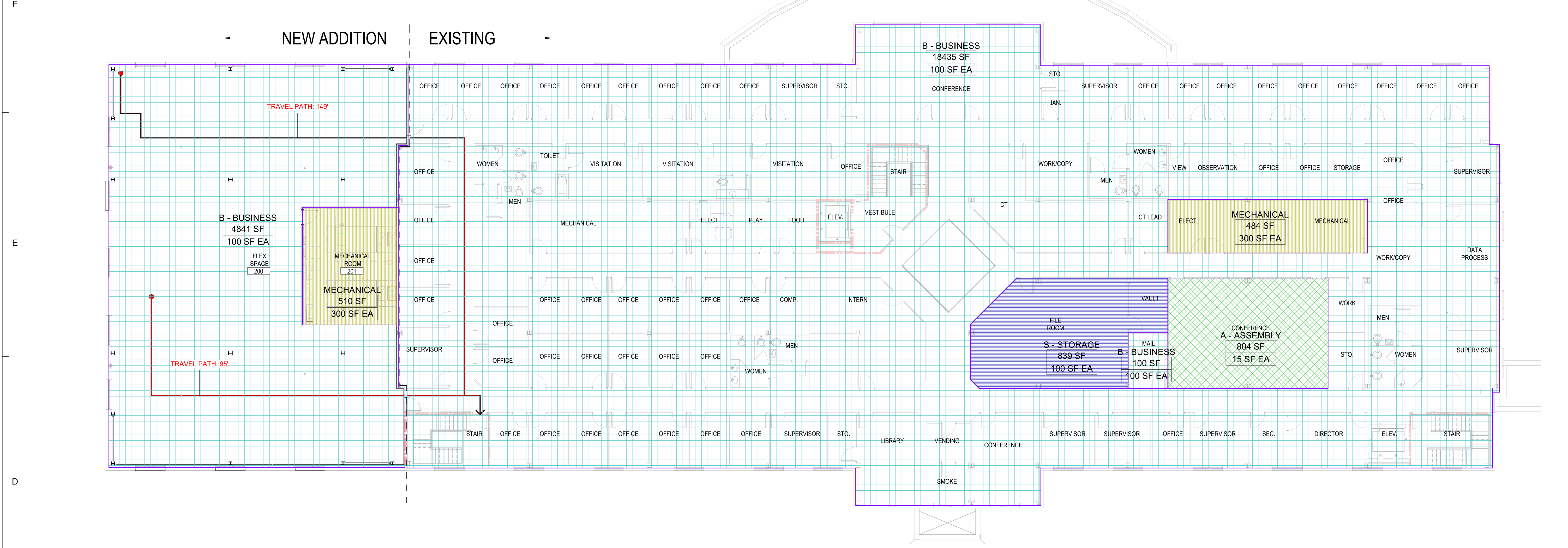
NO.	REASON	DATE

PROJECT TEAM:
PRINCIPAL IN CHARGE: Julie M. McLaurin, AIA
PROJECT MANAGER: Eric Schoenagel, AIA
DESIGN TEAM: LITTLE
PROGRAM NAME: HARNETT COUNTY DSS ADDITION

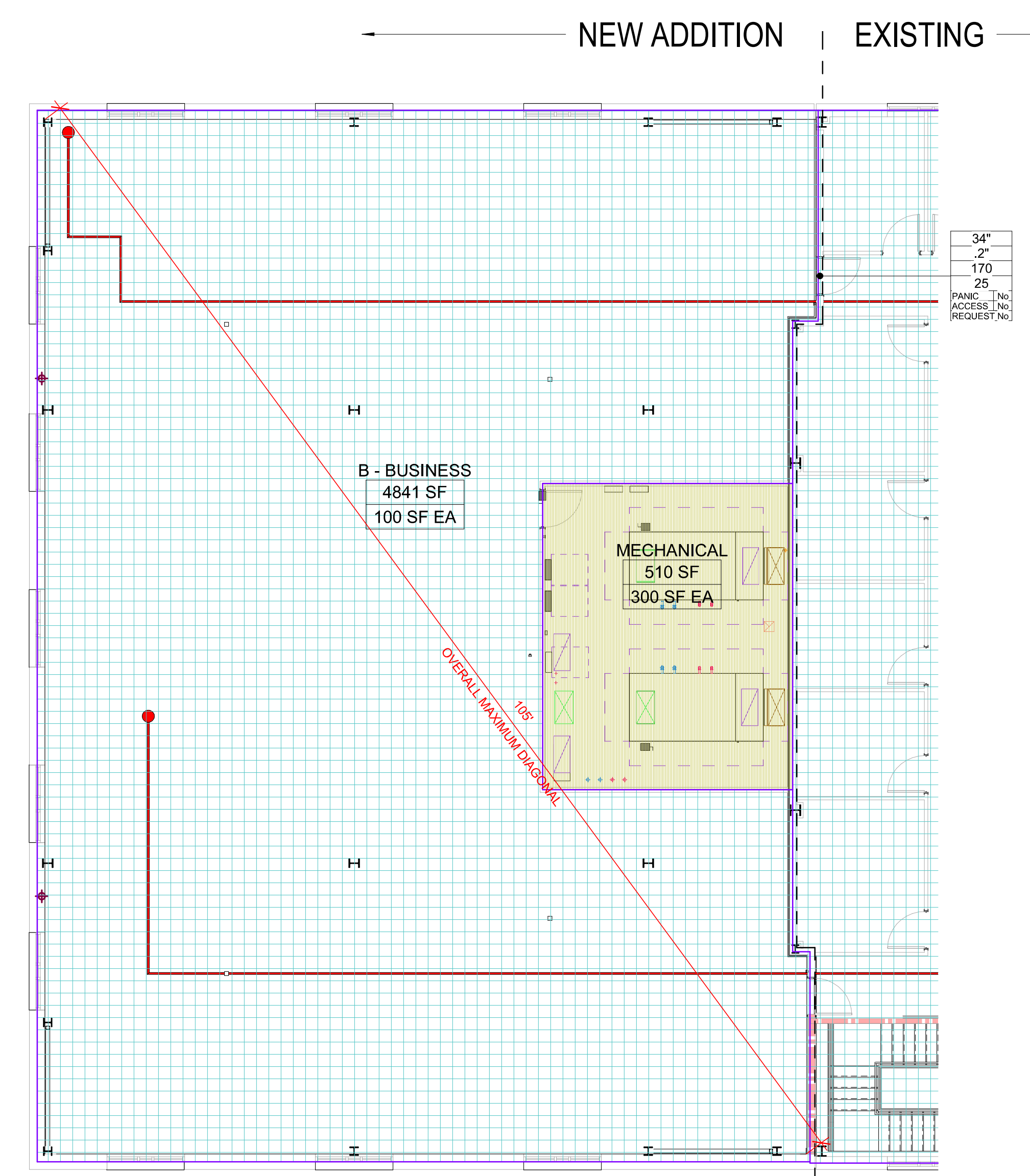
PROJECT NO.: 514806600

SHEET TITLE: LIFE SAFETY PLAN - LEVEL 01

SHEET NUMBER: G111



1 2ND FLOOR - LIFE SAFETY KEY PLAN
G112 3/32" = 1'-0"



2 2ND FLOOR - LIFE SAFETY PLAN
G112 1/8" = 1'-0"

LIFE SAFETY AREA SCHEDULE - LEVELS 01 AND 02

LEVEL 01			
OCCUPANCY	AREA	LOAD FACTOR	OCCUPANT COUNT
BUSINESS	5388	100	54
LEVEL 02			
OCCUPANCY	AREA	LOAD FACTOR	OCCUPANT COUNT
BUSINESS	4841	100	48
MECHANICAL	510	300	2
BUILDING TOTAL			104

- SYMBOLS - LIFE SAFETY**
NOT TO SCALE
- 34" CLEAR OPENING WIDTH
 - 0.2" CLEAR WIDTH PER OCCUPANT
 - 170 ACTUAL OCCUPANT LOAD
 - 75 PANIC HARDWARE
 - ACCESS CONTROL DEVICE (E.G. CARD READER) REQUEST TO EXIT
 - 34" CLEAR STAIR WIDTH
 - 0.2" CLEAR WIDTH PER OCCUPANT
 - 170 ACTUAL OCCUPANT LOAD
 - 75
 - TRAVEL DISTANCE SHOWN: 000' EXIT EGRESS DISTANCE
 - EXIT EGRESS COMMON PATH
 - TRAVEL DISTANCE SHOWN: 000' EXIT EGRESS DEAD END DISTANCE
 - OVERALL DIAGONAL DIMENSION - 14' OVERALL DIAGONAL DISTANCE
 - DISTANCE BETWEEN EXITS - 14' EXIT REMOTENESS DISTANCE
 - CR CARD READER
 - Area Name 150 SF AREA
 - 100 SF EA LOAD FACTOR
 - ILLUMINATED EXIT SIGN



06.13.19

ISSUE FOR CONSTRUCTION DOCUMENTS

ISSUE DATE: 06/28/2019

REVISIONS

NO.	REASON	DATE

PROJECT TEAM

PRINCIPAL IN CHARGE: Julie M. McLaurin, AIA
PROJECT MANAGER: Eric Schoenagel, AIA
DESIGN TEAM: LITTLE
PROGRAM NAME: HARNETT COUNTY DSS ADDITION

PROJECT NO.

514806600

SHEET TITLE

LIFE SAFETY PLAN - LEVEL 02

SHEET NUMBER

G112