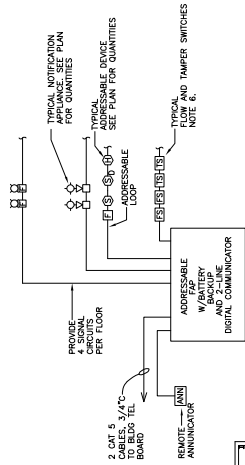
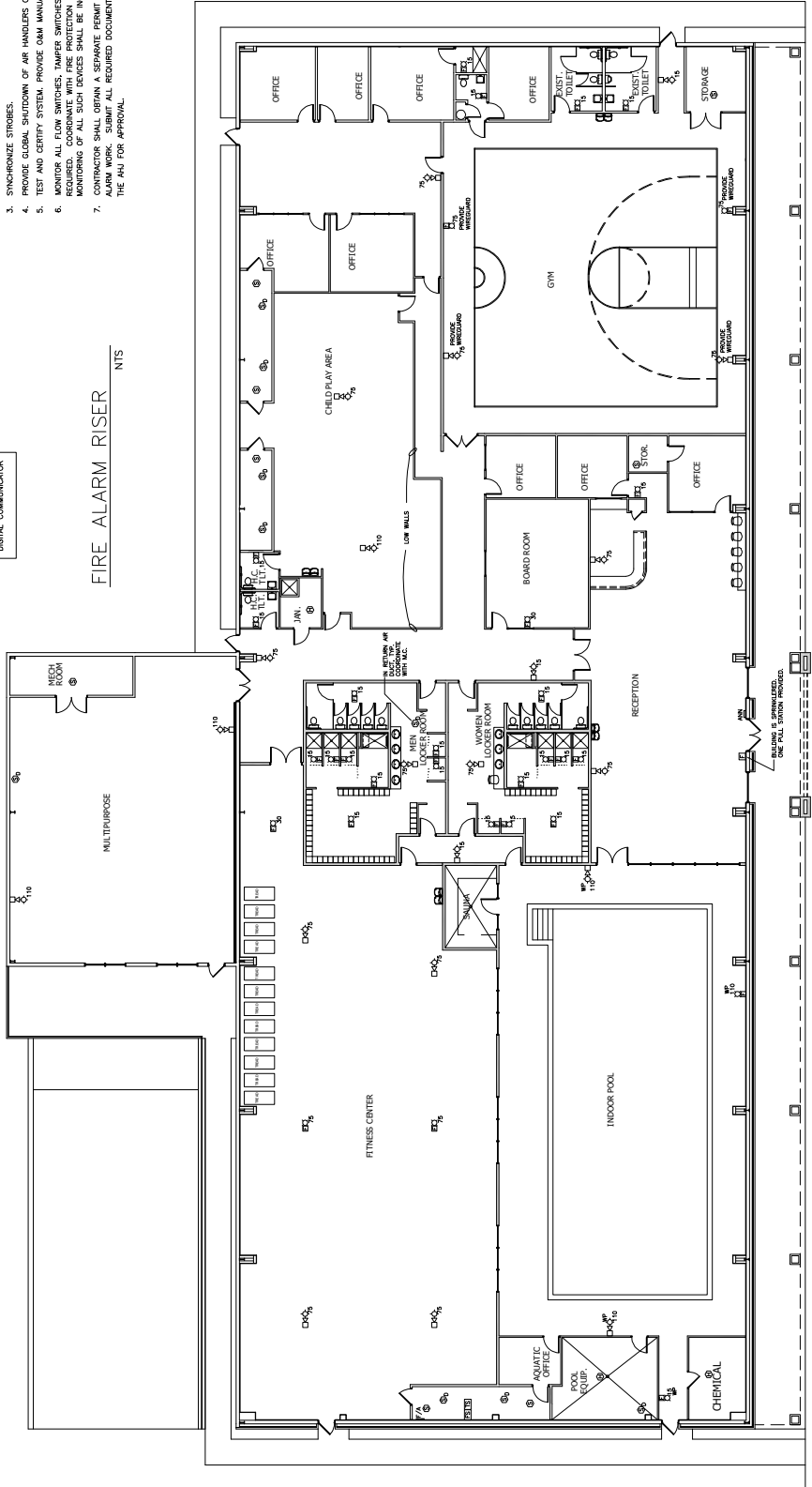


FIRE ALARM LEGEND	
SYMBOL	DESCRIPTION
(E)	PULL STATION
(DS)	F.A. HORN/STROBE, CANDELA INDICATED
(ST)	F.A. STROBE, CANDELA INDICATED
(S)	SMOKE DETECTOR
(SD)	DCPI MOUNTED SMOKE DETECTOR
(D)	DIFFUSIBLE SMOKE DETECTOR
(ZA)	FIRE ALARM PANEL
(ANN)	REMOTE ANNUNCIATOR
(FS)	FLOW SWITCH
(TS)	TAMPER SWITCH



- NOTES:**
1. FIRE ALARM WORK SHALL COMPLY WITH ALL APPLICABLE CODES AND ALL REQUIREMENTS OF THE LOCAL AUTHORITY HAVING JURISDICTION.
 2. CABLES SHALL BE AS RECOMMENDED BY SYSTEM MANUFACTURER.
 3. SYNCHRONIZE STROBES.
 4. PROVIDE GLOBAL SHUTDOWN OF AIR HANDLERS ON ALARM.
 5. TEST AND CERTIFY SYSTEM. PROVIDE O&M MANUALS.
 6. MONITOR ALL FLOW SWITCHES, TAMPER SWITCHES AND VALVES AS REQUIRED. COORDINATE WITH FIRE PROTECTION SYSTEM INSTALLER. MONITORING OF ALL SUCH DEVICES SHALL BE INCLUDED IN THIS CONTRACT.
 7. CONTRACTOR SHALL OBTAIN A SEPARATE PERMIT FOR FIRE ALARM WORK. SUBMIT ALL REQUIRED DOCUMENTATION TO THE AIA FOR APPROVAL.

FIRE ALARM RISER NTS



1 OVERALL PLAN - FIRE ALARM
FA1 SCALE: 3/32"=1'-0"

PROJECT NO. 18800
McNeill Consulting Engineers
 10100 W. 34th Street, Suite 200
 Overland Park, KS 66211
 TEL: 913-247-1400 FAX: 913-247-3779
 WWW.MCNEILL-ENGINEERS.COM

DATE: 29 MARCH, 2019
 REVISION:



YMCA OF HARNETT
 100 DARLETTA DABLE DRIVE
 HARNETT, NORTH CAROLINA
 PROJECT # 18123

3142 WRIGHTVILLE AVENUE
 WILMINGTON NC 28403
 OFFICE: 910.343.1065
 FAX: 910.343.1067
 EMAIL: BG00DARCH@AOL.COM

