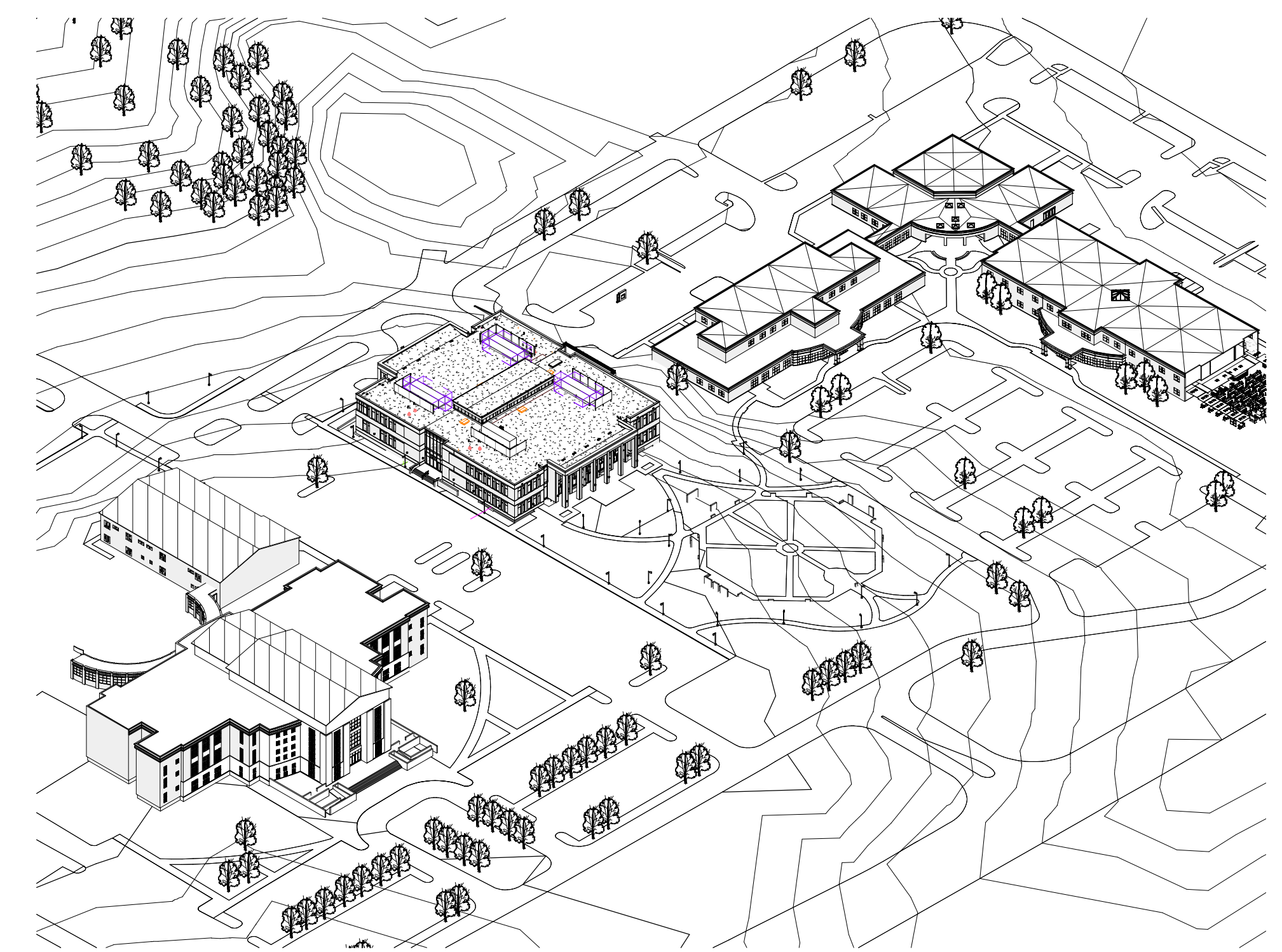


HARNETT COUNTY GOVERNMENT RESOURCE CENTER AND LIBRARY

307 W Cornelius Harnett Blvd, Lillington, NC

CONSTRUCTION DOCUMENTS - 06/28/19



CAMPUS AERIAL



VICINITY PLAN
1" = 400'-0"

LITTLE
DIVERSIFIED ARCHITECTURAL CONSULTING

410 Blackwell Street, Suite 10
Durham, NC 27701
Tel: 919-474-2500

www.littleonline.com

This drawing and the design shown are the property of Little Diversified Architectural Consulting. The reproduction, copying or other use of this drawing without their written consent is prohibited and any infringement will be subject to legal action.

© Little 2019



ISSUE FOR
CONSTRUCTION DOCUMENTS

ISSUE DATE
06.28.2019

REVISIONS

NO.	REASON	DATE

PROJECT TEAM
PRINCIPAL IN CHARGE
JULIE MCLAURIN, AIA
PROJECT MANAGER
ERIC SCHOENAGEL, AIA
DESIGN TEAM
LITTLE
PROGRAM NAME

HARNETT COUNTY
GOVERNMENT RESOURCE
CENTER AND LIBRARY

PROJECT NO.
514-8066-00

SHEET TITLE
COVER SHEET

SHEET NUMBER
CS

C:\Users\jeff.scott\Documents\ARCH-514806600-Harnett County GSC_jeff.scott@littleonline.com.rvt 6/28/2019 1:46:10 PM

OWNER
Harnett County
307 West Cornelius
Harnett Blvd
Lillington, NC
910-893-7555
STEVE WARD

ARCHITECT
LITTLE
410 Blackwell Street
Durham, NC 27701
919-474-2500
ERIC SCHOENAGEL,
AIA

CIVIL
Dewberry
2610 Wycliff Road
Raleigh, NC 27607
919-424-3730
MATT WEST, PE

LANDSCAPE
Dewberry
2610 Wycliff Road
Raleigh, NC 27607
984-833-4833
BENTLEY RUGGLES,
RLA

STRUCTURAL
LITTLE
410 Blackwell Street
Durham, NC 27701
919-474-2500
SARAH MUSSER, PE

PLUMBING
Dewberry
2610 Wycliff Road
Raleigh, NC 27607
919-424-3728
EMMETT WILLIS, PE

MECHANICAL
Dewberry
2610 Wycliff Road
Raleigh, NC 27607
984-232-6803
JOHN TEETER, PE

ELECTRICAL
Dewberry
2610 Wycliff Road
Raleigh, NC 27607
919-424-3724
WILLIAM KEMP, PE



ISSUE FOR
CONSTRUCTION DOCUMENTS

ISSUE DATE
06.28.2019

REVISIONS

NO.	REASON	DATE

PROJECT TEAM

PRINCIPAL IN CHARGE
JULIE MCLAURIN, AIA

PROJECT MANAGER
ERIC SCHOENAGEL, AIA

DESIGN TEAM
LITTLE

PROGRAM NAME
HARNETT COUNTY GOVERNMENT RESOURCE CENTER AND LIBRARY

PROJECT NO.
514-8066-00

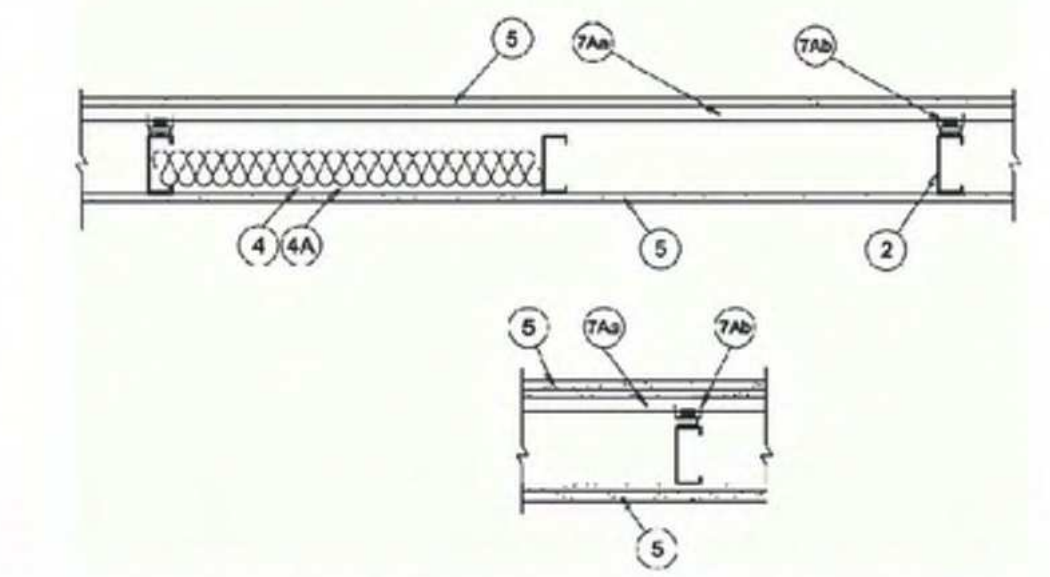
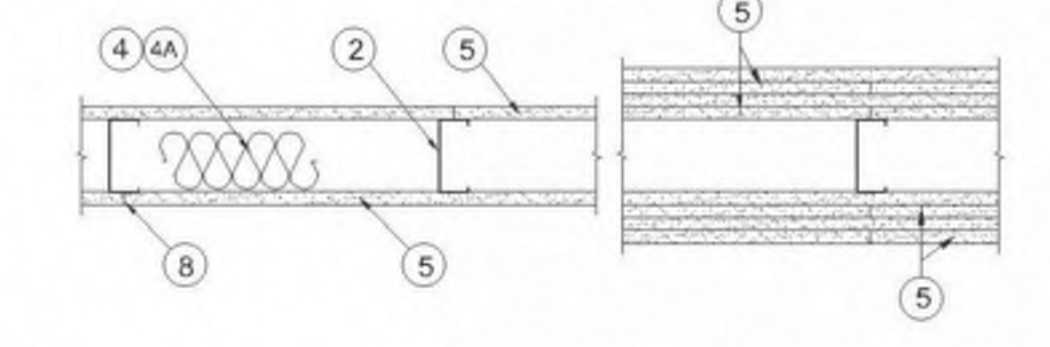
SHEET TITLE
FIRE RESISTANCE DESIGNS

SHEET NUMBER
G010

UL U419

Design No. U419
September 28, 2018

Nonbearing Wall Ratings — 1, 2, 3 or 4 Hr (See Items 4 & 5 through 5K)
* Indicates such products shall bear the UL or cUL Certification Mark for jurisdictions employing the UL or cUL Certification (such as Canada), respectively.



1. Floor and Ceiling Runners — (Not Shown) — For use with Item 2 — Channel shaped, fabricated from min 25 MSG corrosion-protected steel, min depth to accommodate stud size, with min 1-1/4 in. long legs, attached to floor and ceiling with fasteners 24 in. OC max.

1A. Framing Members — Floor and Ceiling Runner — (Not Shown) — In lieu of Item 1 — For use with Item 2B, proprietary channel shaped runners, 3-5/8 in. deep attached to floor and ceiling with fasteners 24 in. OC max. CALIFORNIA EXPANDED METAL PRODUCTS CO — Viper25™ Track

CRACO MFG INC — SmartTrack25™
MARINOWARE, DIV OF WARE INDUSTRIES INC — Viper25™ Track
FUSION BUILDING PRODUCTS — Viper25™ Track
IMPERIAL MANUFACTURING GROUP INC — Viper25™ Track

1B. Framing Members — Floor and Ceiling Runner — (Not Shown) — In lieu of Item 1 — For use with Item 2C, proprietary channel shaped runners, 1-1/4 in. wide by 3-5/8 in. deep fabricated from min D 0.18 in. thick galv steel, attached to floor and ceiling with fasteners spaced 24 in. OC max. CALIFORNIA EXPANDED METAL PRODUCTS CO — Viper20™ Track

MARINOWARE, DIV OF WARE INDUSTRIES INC — Viper20™ Track
FUSION BUILDING PRODUCTS — Viper20™ Track
IMPERIAL MANUFACTURING GROUP INC — Viper20™ Track

1C. Framing Members — Floor and Ceiling Runners — (Not Shown) — In lieu of Item 1 — Channel shaped, attached to floor and ceiling with fasteners 24 in. OC max. ALLSTEEL & GYPSUM PRODUCTS INC — Type SUPREME D24/30EQD and Type SUPREME D20

CONSOLIDATED FABRICATORS CORP. BUILDING PRODUCTS DIV — Type SUPREME D24/30EQD and Type SUPREME D20

QUAIL RUN BUILDING MATERIALS INC — Type SUPREME D24/30EQD and Type SUPREME D20

SCAFCO STEEL STUD MANUFACTURING CO — Type SUPREME D24/30EQD and Type SUPREME D20

STEEL CONSTRUCTION SYSTEMS INC — Type SUPREME D24/30EQD and Type SUPREME D20

UNITED METAL PRODUCTS INC — Type SUPREME D24/30EQD and Type SUPREME D20

1D. Floor and Ceiling Runners — (Not Shown) — For use with Item 2A — Channel shaped, fabricated from min 20 MSG corrosion-protected or galv steel, min depth to accommodate stud size, with min 1 in. long legs, attached to floor and ceiling with fasteners spaced max 24 in. OC.

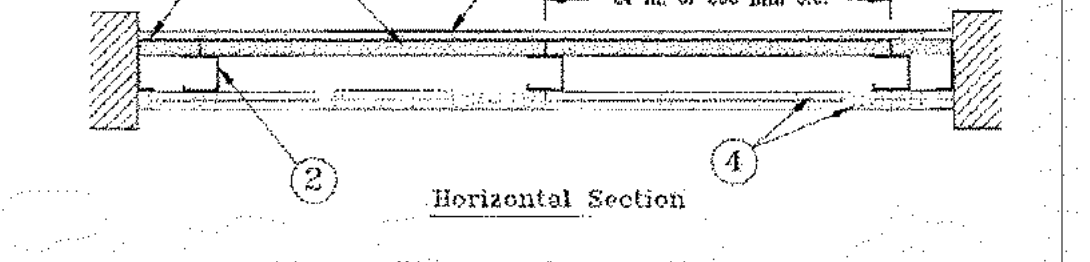
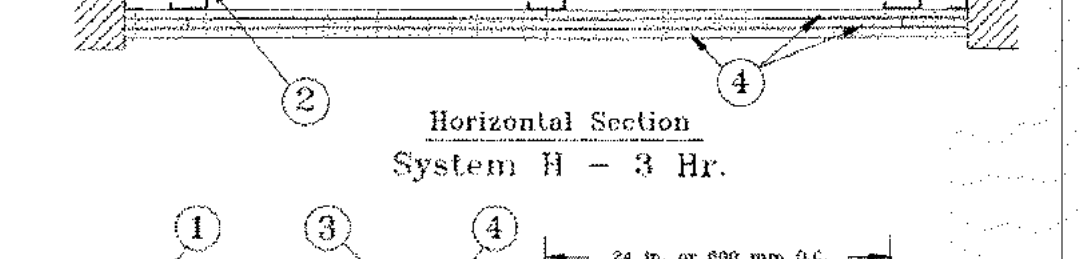
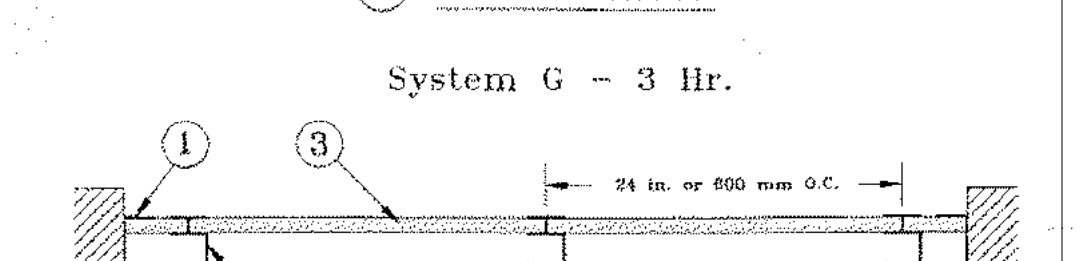
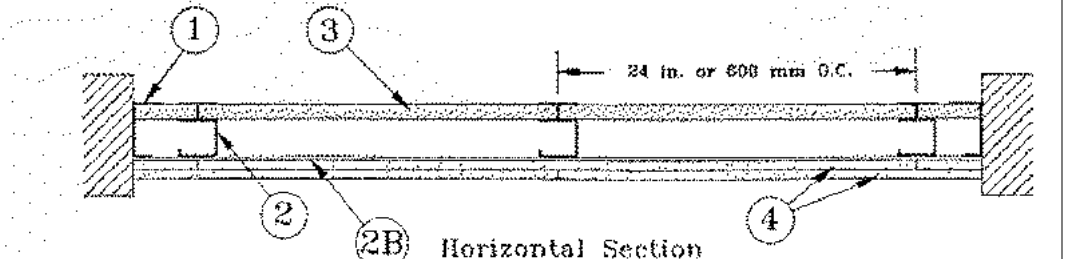
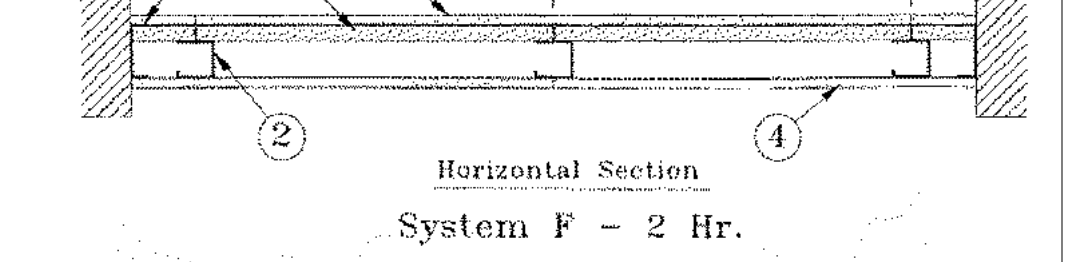
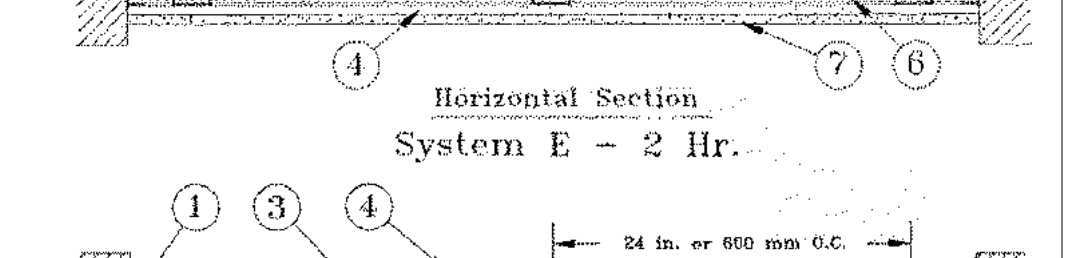
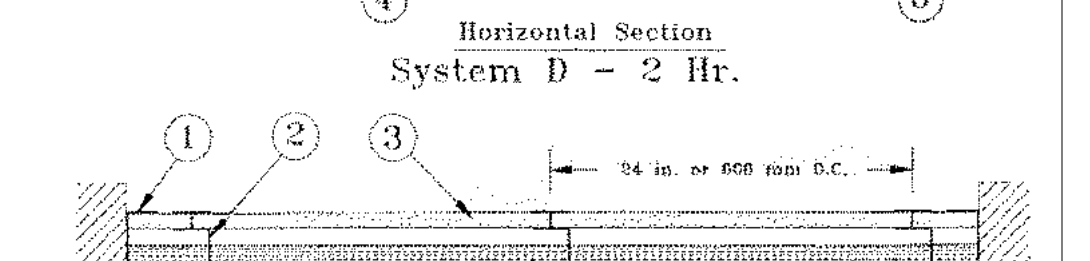
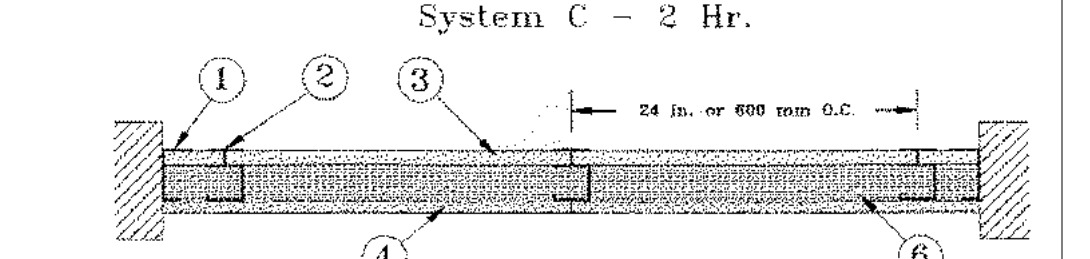
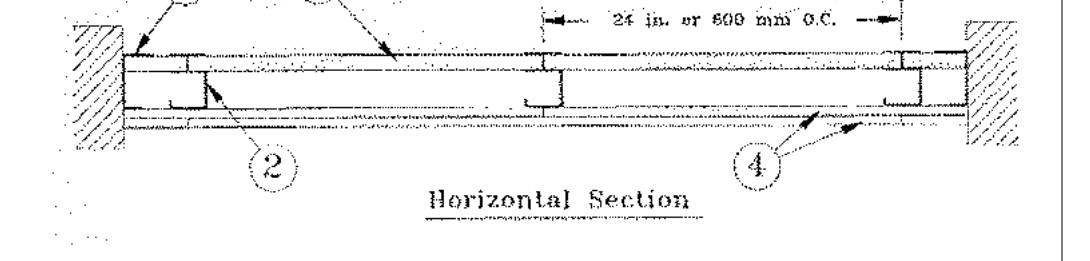
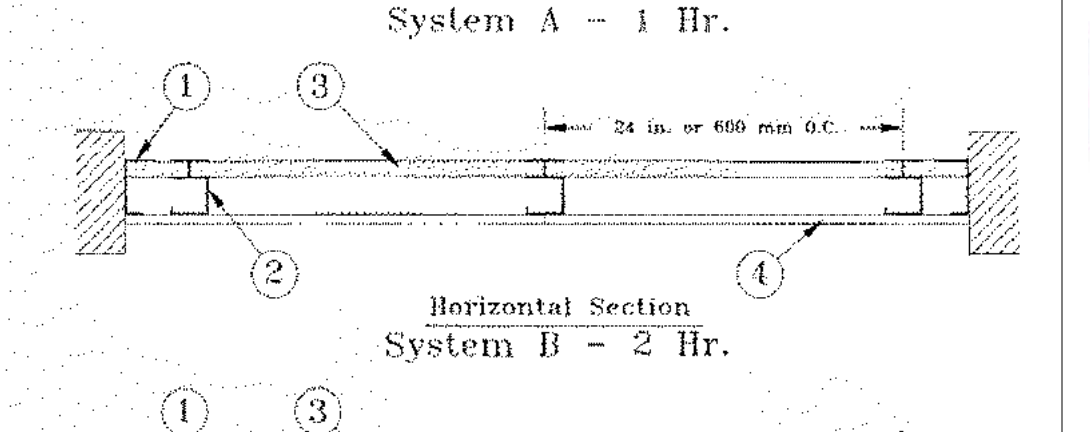
1E. Framing Members — Floor and Ceiling Runners — (Not Shown, As an alternate to Item 1) — For use with Items 2E, 5F or 5G or 5I only, channel shaped, fabricated from min. D.015 in. (min bare metal thickness) galvanized steel, attached to floor and ceiling with fasteners 24 in. OC max. CLARKDIETRICH BUILDING SYSTEMS — CD ProTRAK

DMFCWBS L L C — ProTRAK

UL U415

Design No. U415
September 27, 2018

Nonbearing Wall Ratings — 1, 2, 3 or 4 Hr
* Indicates such products shall bear the UL or cUL Certification Mark for jurisdictions employing the UL or cUL Certification (such as Canada), respectively.



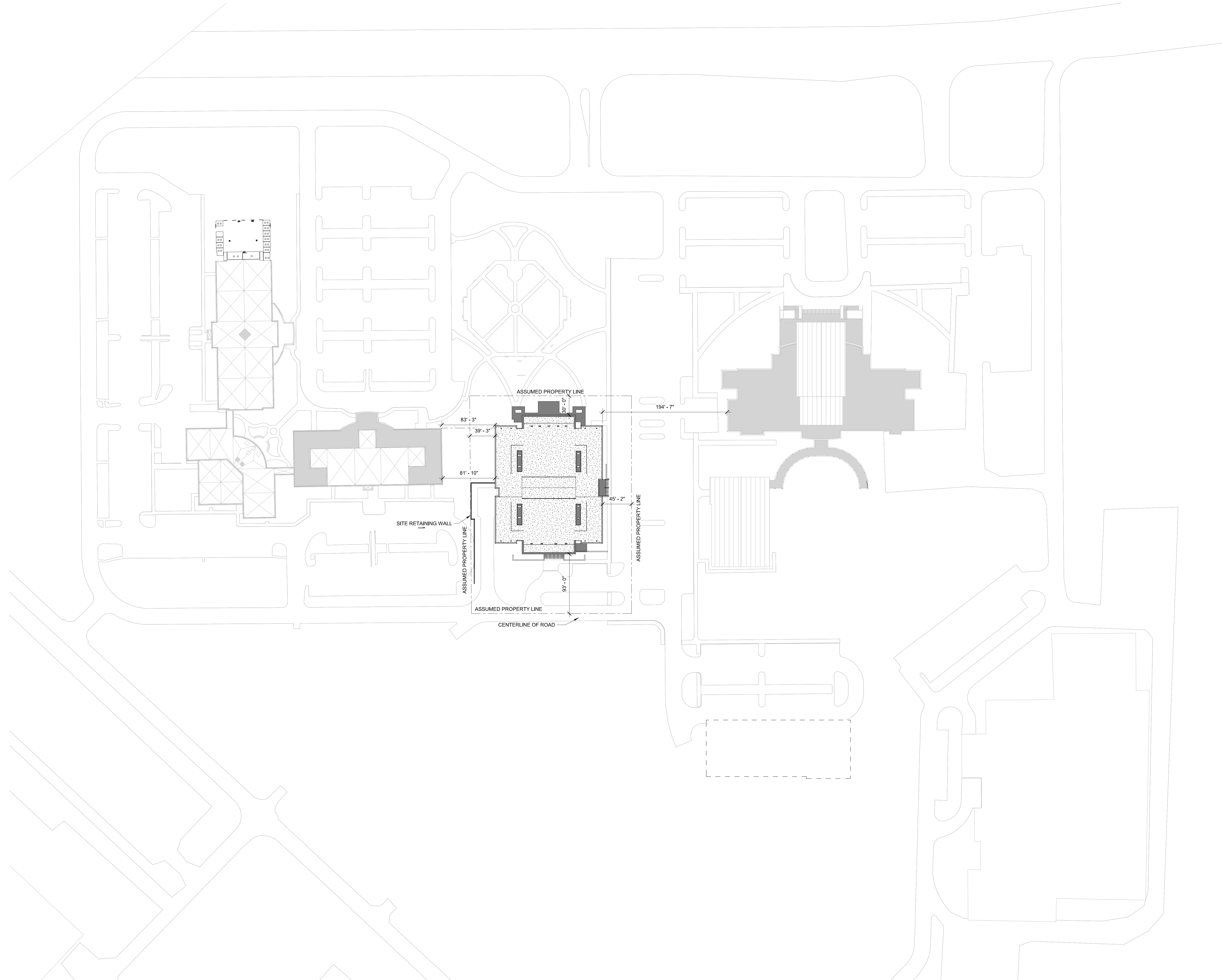
1. Floor, Side and Ceiling Runners — "J" - shaped runner, min 2-1/2 in. deep (min 4 in. deep when System C is used), with unequal legs of 1 in. and 2 in., fabricated from min 24 MSG (min 20 MSG when Items 4A, 4B, 4C, 4D or 7 are used) galv steel. Runners positioned with short leg toward finished side of wall. Runners attached to structural supports with steel fasteners located not greater than 2 in. from ends and not greater than 24 in. OC. "E" - shaped studs (Item 2A) may be used as side runners in place of "J" - shaped runners.

2. Steel Studs — "C"-H" - shaped studs, min 2-1/2 in. deep (min 4 in. deep when System C is used), fabricated from min 25 MSG (min 20 MSG when Items 2D, 4A, 4B, 4C, 4D or 7 is used) galv steel. Cut to lengths 3/8 to 1/2 in. less than floor-to-ceiling height and spaced 24 in. or 600 mm OC (max 16 in. OC when Items 4A, 4B, 4C, or 4D are used).

F
E
D
C
B
A

C:\Users\jeff.scott\Documents\ARCH-514806600-Harnett County GSC_jeff.scott@littleonline.com.rvt

6/28/2019 1:46:17 PM



ISSUE FOR
CONSTRUCTION DOCUMENTS

ISSUE DATE
06.28.2019

REVISIONS

NO.	REASON	DATE

PROJECT TEAM
PRINCIPAL IN CHARGE
JULIE MCLAURIN, AIA
PROJECT MANAGER
ERIC SCHOENAGEL, AIA
DESIGN TEAM
LITTLE
PROGRAM NAME

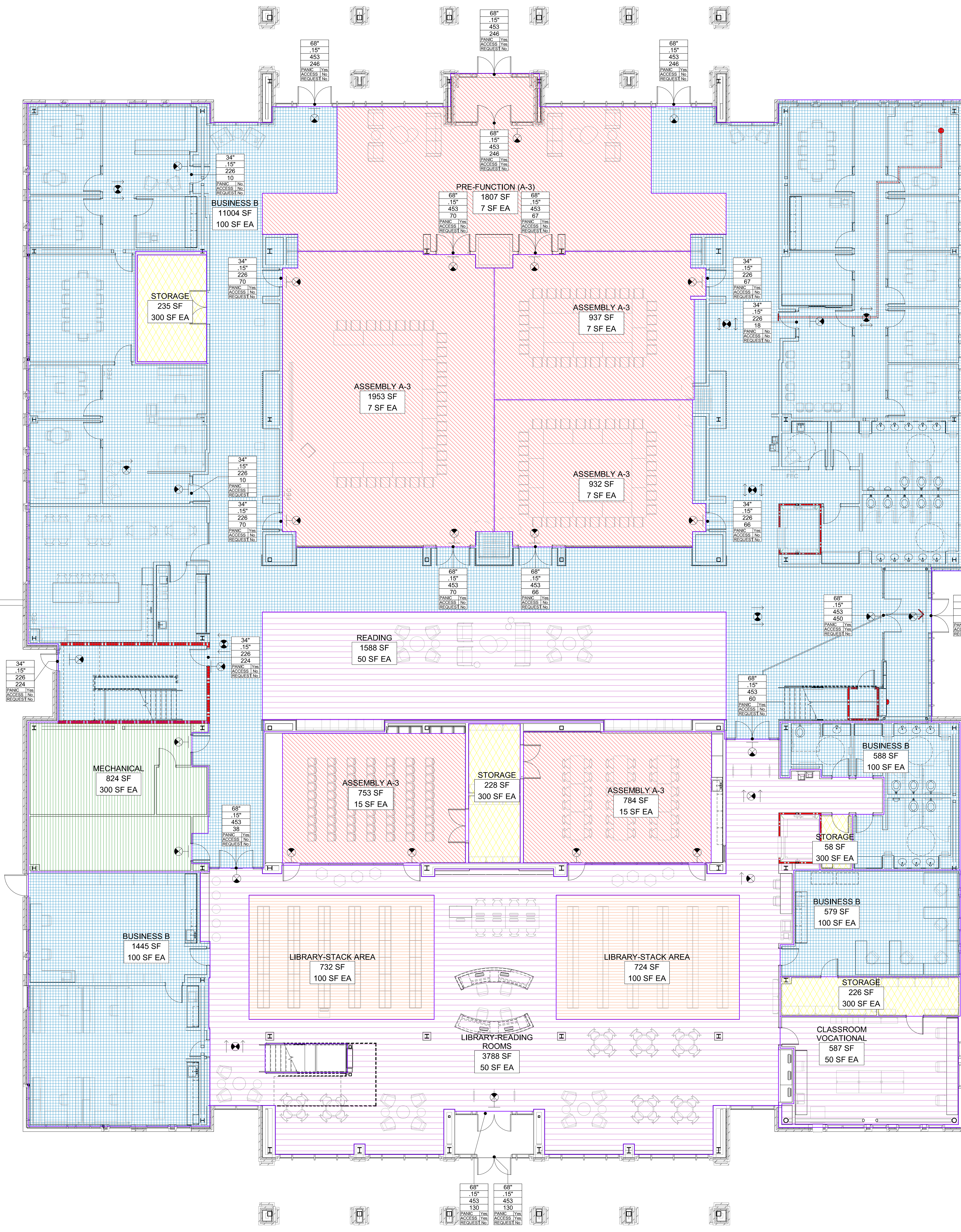
**HARNETT COUNTY
GOVERNMENT RESOURCE
CENTER AND LIBRARY**

PROJECT NO.
514-8066-00

SHEET TITLE
**ARCHITECTURAL SITE
PLAN**

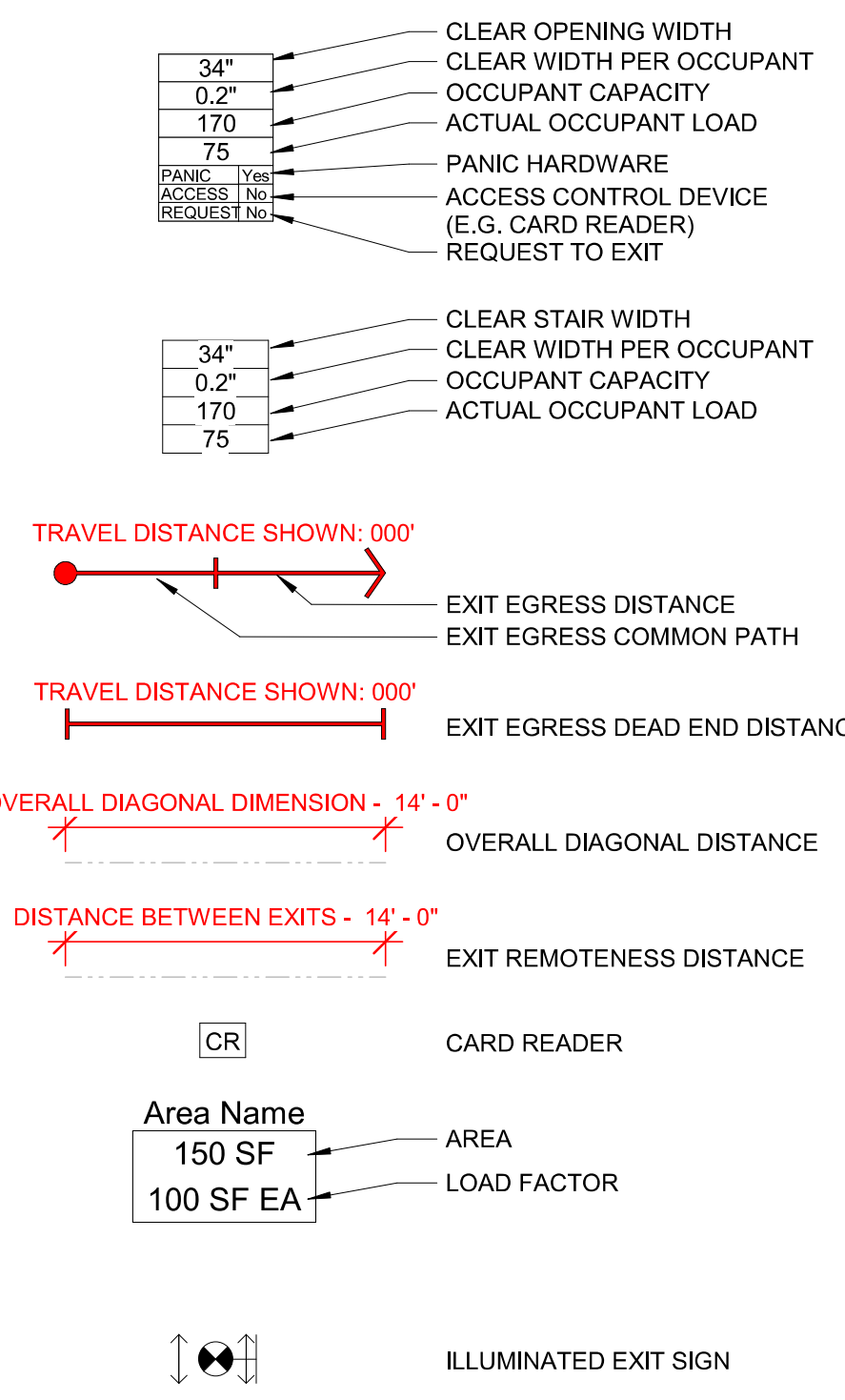
SHEET NUMBER
G100

1 ARCHITECTURAL SITE PLAN - LIFE SAFETY
G100 1" = 60'-0"



LIFE SAFETY - AREA SCHEDULE - LEVEL 01

OCCUPANCY	AREA	Load Factor	OCCUPANTS
BUSINESS B	11004 SF	100 SF	110
LIBRARY-READING ROOMS	3788 SF	50 SF	76
ASSEMBLY A-3	1953 SF	7 SF	279
PRE-FUNCTION (A-3)	1807 SF	7 SF	256
READING	1588 SF	50 SF	32
BUSINESS B	1445 SF	100 SF	14
ASSEMBLY A-3	937 SF	7 SF	134
ASSEMBLY A-3	932 SF	7 SF	133
MECHANICAL	824 SF	300 SF	3
ASSEMBLY A-3	784 SF	15 SF	52
ASSEMBLY A-3	753 SF	15 SF	50
LIBRARY-STACK AREA	724 SF	100 SF	7
LIBRARY-STACK AREA	724 SF	100 SF	7
BUSINESS B	588 SF	100 SF	6
CLASSROOM VOCATIONAL	587 SF	50 SF	12
BUSINESS B	579 SF	100 SF	6
STORAGE	235 SF	300 SF	1
STORAGE	226 SF	300 SF	1
STORAGE	226 SF	300 SF	1
STORAGE	58 SF	300 SF	0
	29770 SF		1,182



06.13.19

ISSUE FOR
CONSTRUCTION DOCUMENTS

ISSUE DATE
06.28.2019

NO.	REASON	DATE

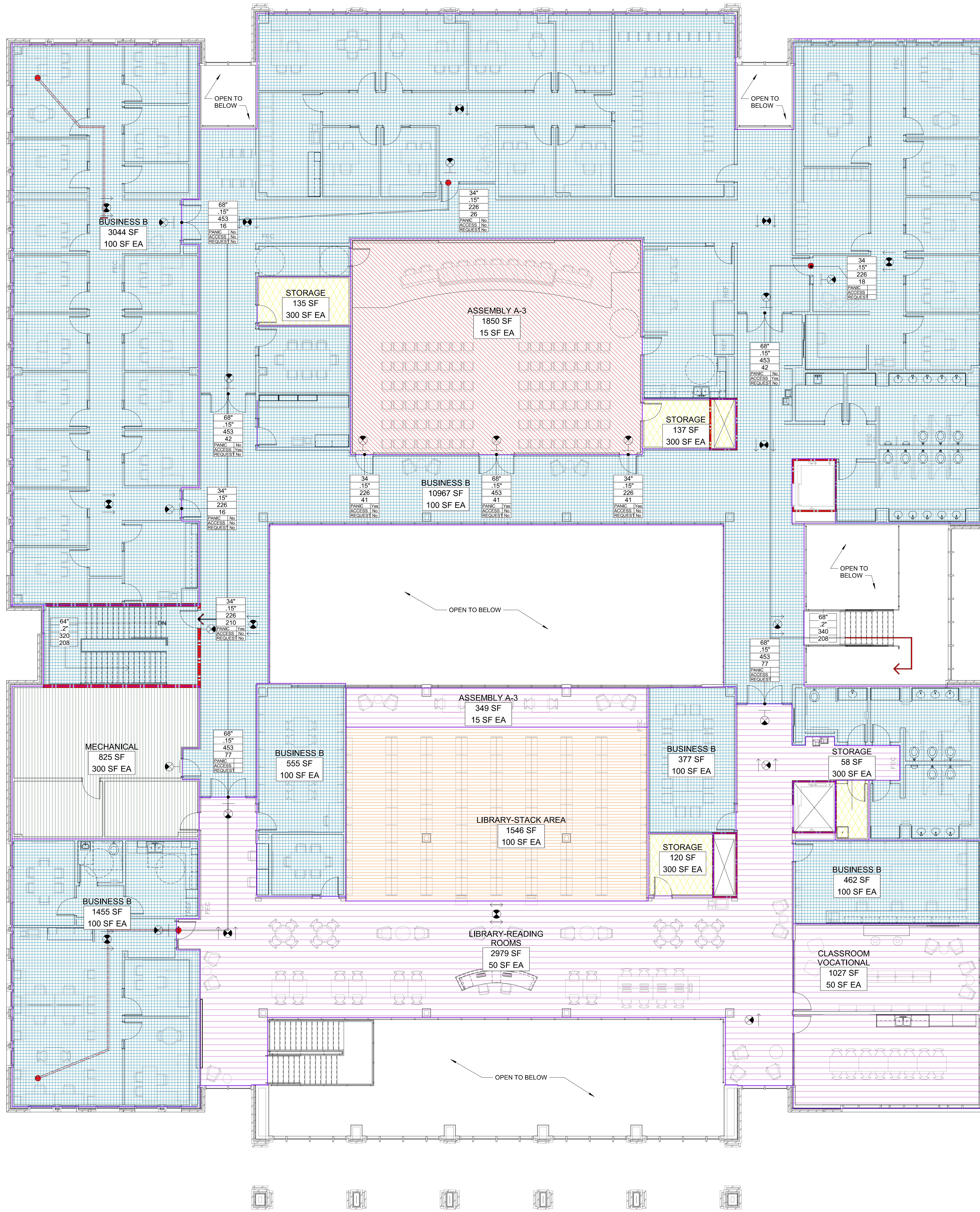
PROJECT TEAM
PRINCIPAL IN CHARGE
JULIE MCLAURIN, AIA
PROJECT MANAGER
ERIC SCHOENAGEL, AIA

DESIGN TEAM
LITTLE
PROJECT NAME
HARNETT COUNTY GOVERNMENT RESOURCE CENTER AND LIBRARY

PROJECT NO.
514-8066-00

SHEET TITLE
OCCUPANCY PLAN - FIRST FLOOR

SHEET NUMBER
G111



LIFE SAFETY - AREA SCHEDULE - LEVEL 02

OCCUPANCY	AREA	LOAD FACTOR	OCCUPANTS
BUSINESS B	10967 SF	100 SF	110
BUSINESS B	3044 SF	100 SF	30
LIBRARY-READING ROOMS	2979 SF	50 SF	60
ASSEMBLY A-3	1850 SF	15 SF	123
LIBRARY-STACK AREA	1546 SF	100 SF	15
BUSINESS B	1455 SF	100 SF	15
CLASSROOM VOCATIONAL	1027 SF	50 SF	21
MECHANICAL	825 SF	300 SF	3
BUSINESS B	555 SF	100 SF	6
BUSINESS B	462 SF	100 SF	5
BUSINESS B	377 SF	100 SF	4
ASSEMBLY A-3	349 SF	15 SF	23
STORAGE	137 SF	300 SF	0
STORAGE	135 SF	300 SF	0
STORAGE	120 SF	300 SF	0
STORAGE	58 SF	300 SF	0
	25887 SF		415



06.13.19

ISSUE FOR
CONSTRUCTION DOCUMENTS

ISSUE DATE
06.28.2019

REVISIONS

NO.	REASON	DATE

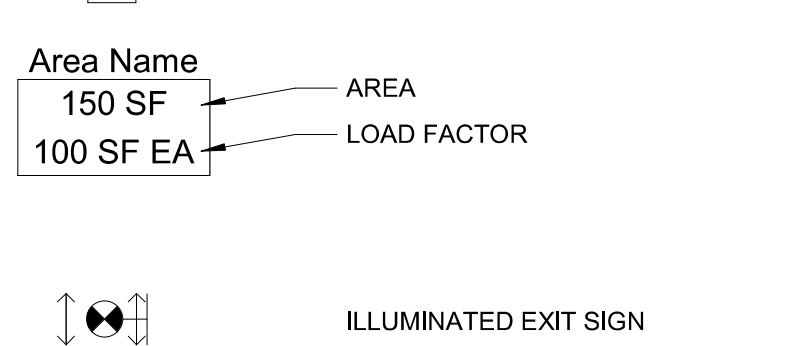
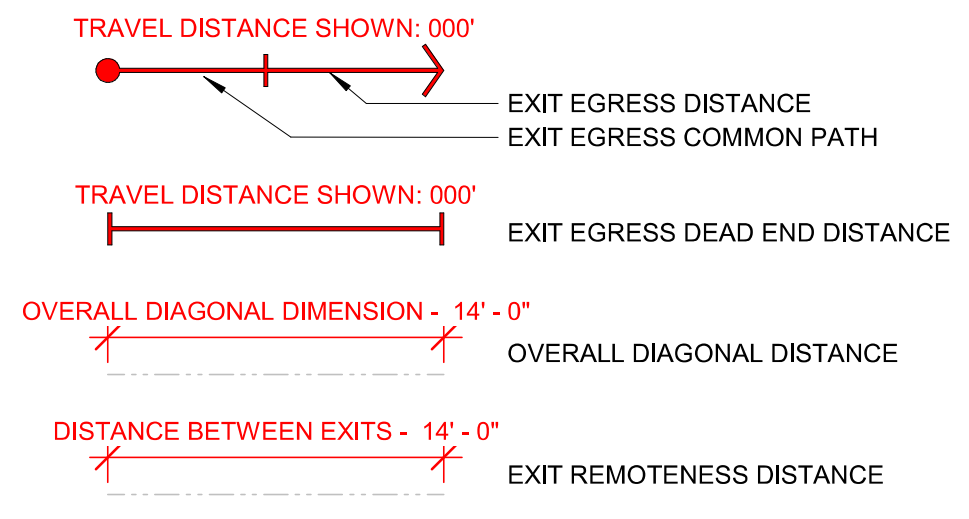
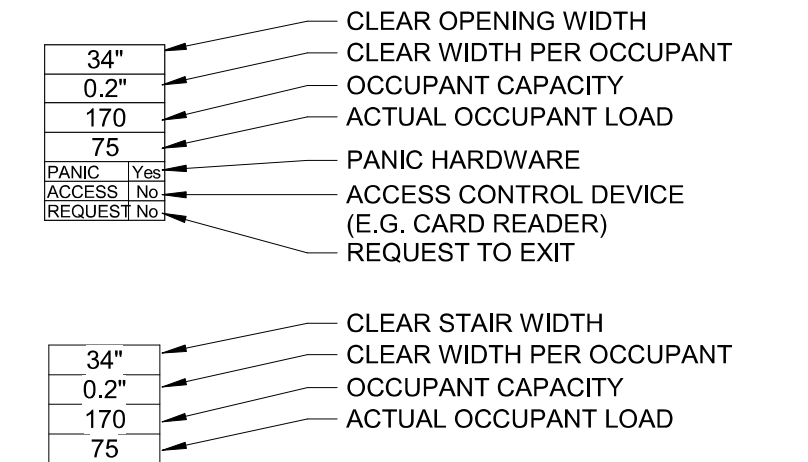
PROJECT TEAM
PRINCIPAL IN CHARGE
JULIE MCLAURIN, AIA
PROJECT MANAGER
ERIC SCHOENAGEL, AIA
DESIGN TEAM
LITTLE
PROGRAM NAME

HARNETT COUNTY GOVERNMENT RESOURCE CENTER AND LIBRARY

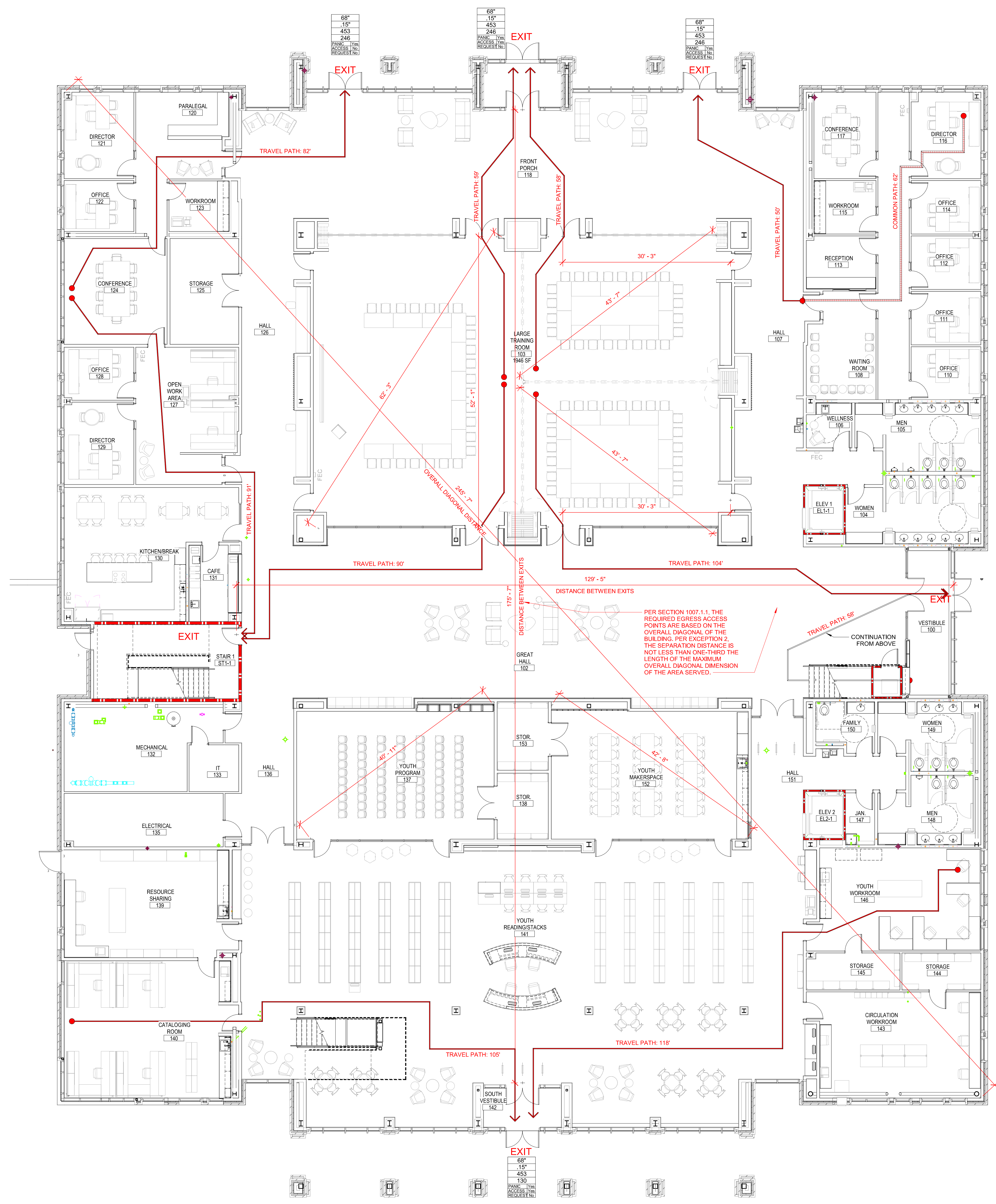
PROJECT NO.
514-8066-00

SHEET TITLE
OCCUPANCY PLAN - SECOND FLOOR

SHEET NUMBER
G112

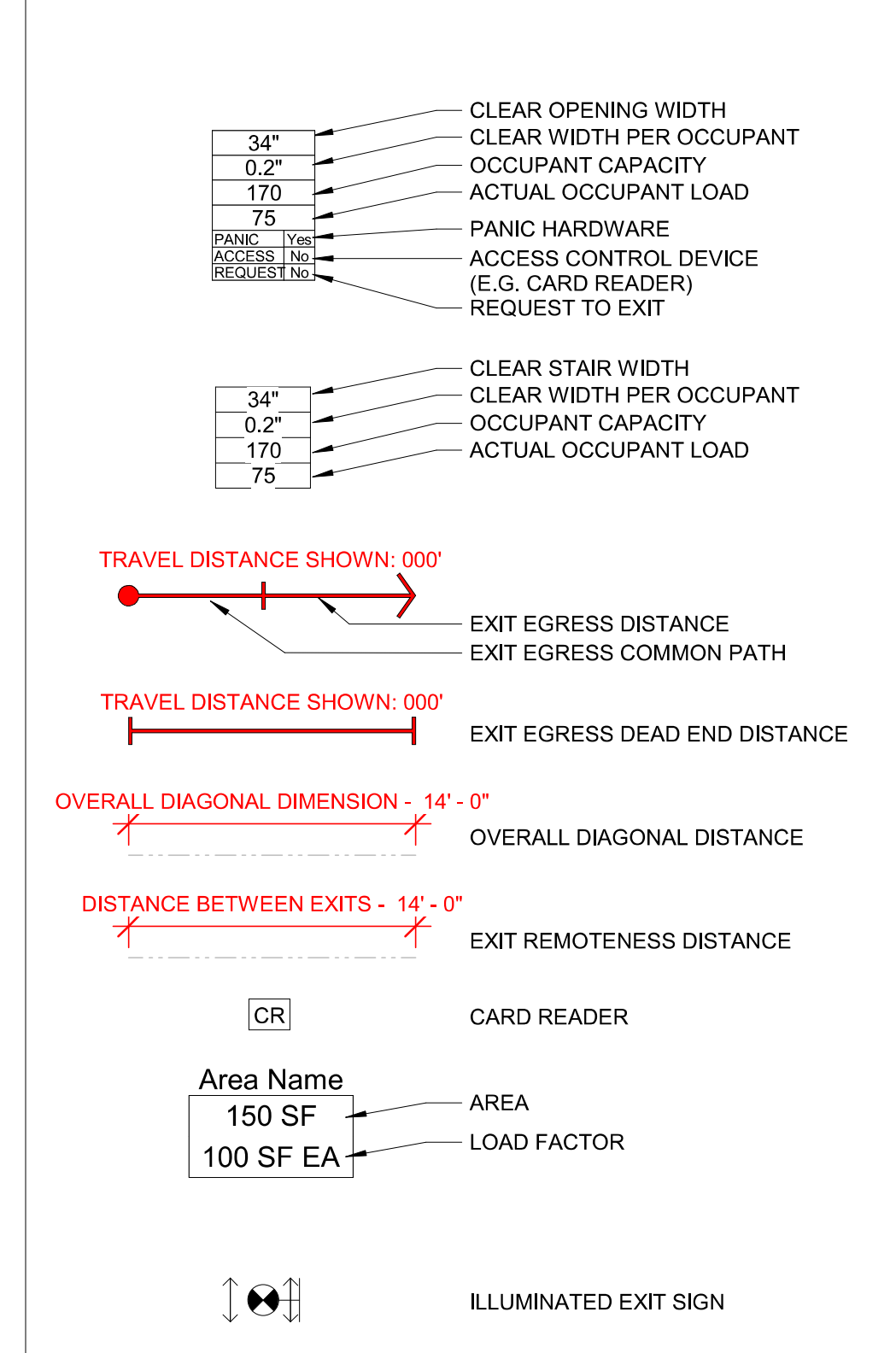


SYMBOLS - LIFE SAFETY
1/8" = 1'-0"



FIRE BARRIER		FIRE & SMOKE BARRIER	
1-HOUR	[Symbol]	1-HOUR	[Symbol]
2-HOUR	[Symbol]	2-HOUR	[Symbol]
3-HOUR	[Symbol]	3-HOUR	[Symbol]
FIRE WALL		FIRE PARTITION	
2-HOUR	[Symbol]	0.5-HOUR	[Symbol]
3-HOUR	[Symbol]	1-HOUR	[Symbol]
4-HOUR	[Symbol]		
SMOKE PARTITION		SMOKE BARRIER	
0-HOUR	[Symbol]	1-HOUR	[Symbol]

RATED WALL TYPES
1/8" = 1'-0"



ISSUE FOR CONSTRUCTION DOCUMENTS

ISSUE DATE: 06.28.2019

REVISIONS NO.	REASON	DATE

PROJECT TEAM
PRINCIPAL IN CHARGE: JULIE McLAURIN, AIA
PROJECT MANAGER: ERIC SCHOENAGEL, AIA
DESIGN TEAM: LITTLE
PROGRAM NAME: HARNETT COUNTY GOVERNMENT RESOURCE CENTER AND LIBRARY

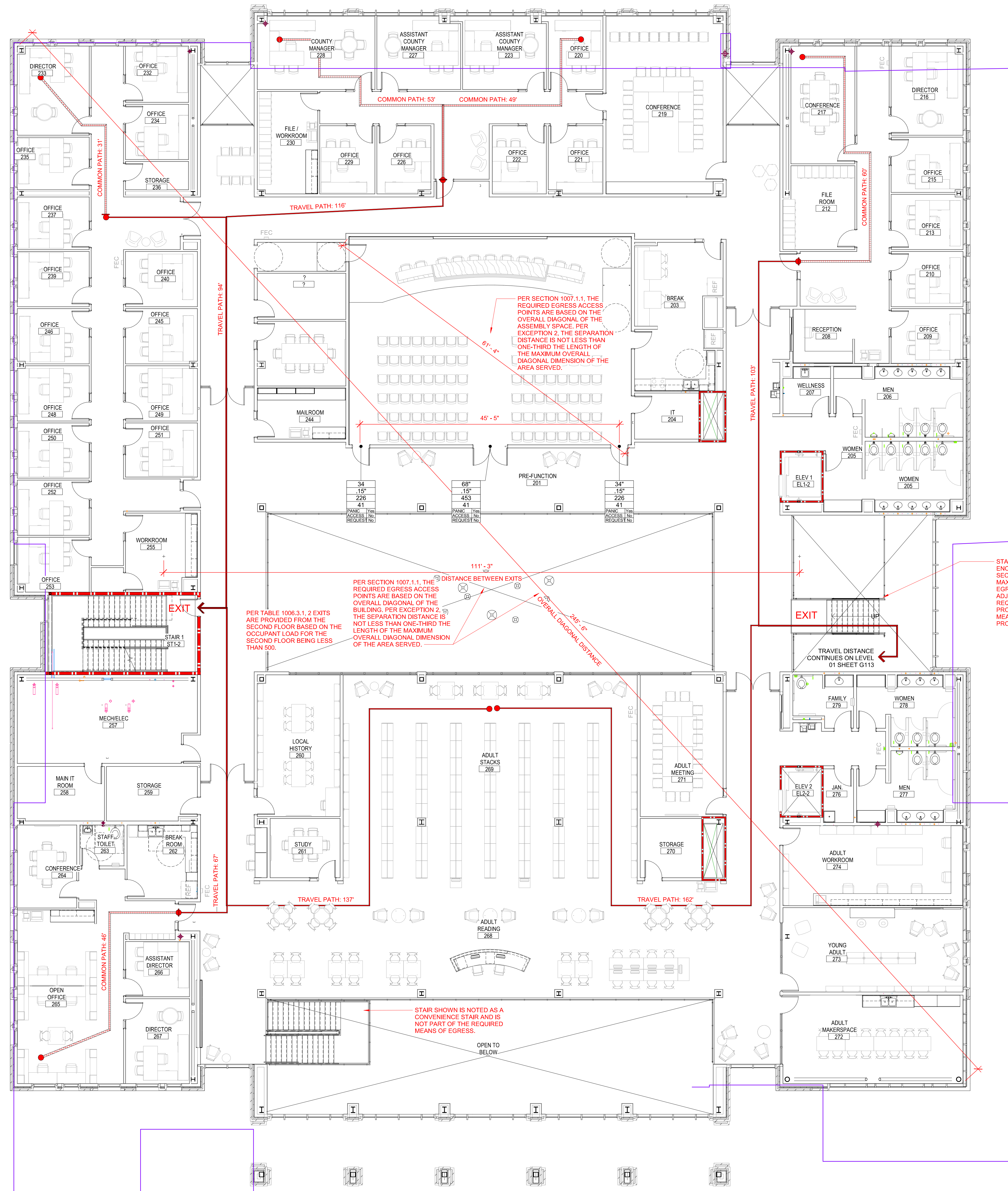
PROJECT NO.: 514-8066-00

SHEET TITLE: LIFE SAFETY PLAN - FIRST FLOOR

SHEET NUMBER: G113

2A LIFE SAFETY PLAN - LEVEL 01
G113 1/8" = 1'-0"

C:\Users\jeff.scott\Documents\ARCH-514806600-Harnett County GSC_jeff.scott@littleonline.com.rvt 6/28/2019 1:48:11 PM



PER SECTION 1007.1.1, THE REQUIRED EGRESS ACCESS POINTS ARE BASED ON THE OVERALL DIAGONAL OF THE ASSEMBLY SPACE. PER EXCEPTION 2, THE SEPARATION DISTANCE IS NOT LESS THAN ONE-THIRD THE LENGTH OF THE MAXIMUM OVERALL DIAGONAL DIMENSION OF THE AREA SERVED.

PER SECTION 1007.1.1, THE REQUIRED EGRESS ACCESS POINTS ARE BASED ON THE OVERALL DIAGONAL OF THE BUILDING. PER EXCEPTION 2, THE SEPARATION DISTANCE IS NOT LESS THAN ONE-THIRD THE LENGTH OF THE MAXIMUM OVERALL DIAGONAL DIMENSION OF THE AREA SERVED.

PER TABLE 1006.3.1.2 EXITS ARE PROVIDED FROM THE SECOND FLOOR BASED ON THE OCCUPANT LOAD FOR THE SECOND FLOOR BEING LESS THAN 500.

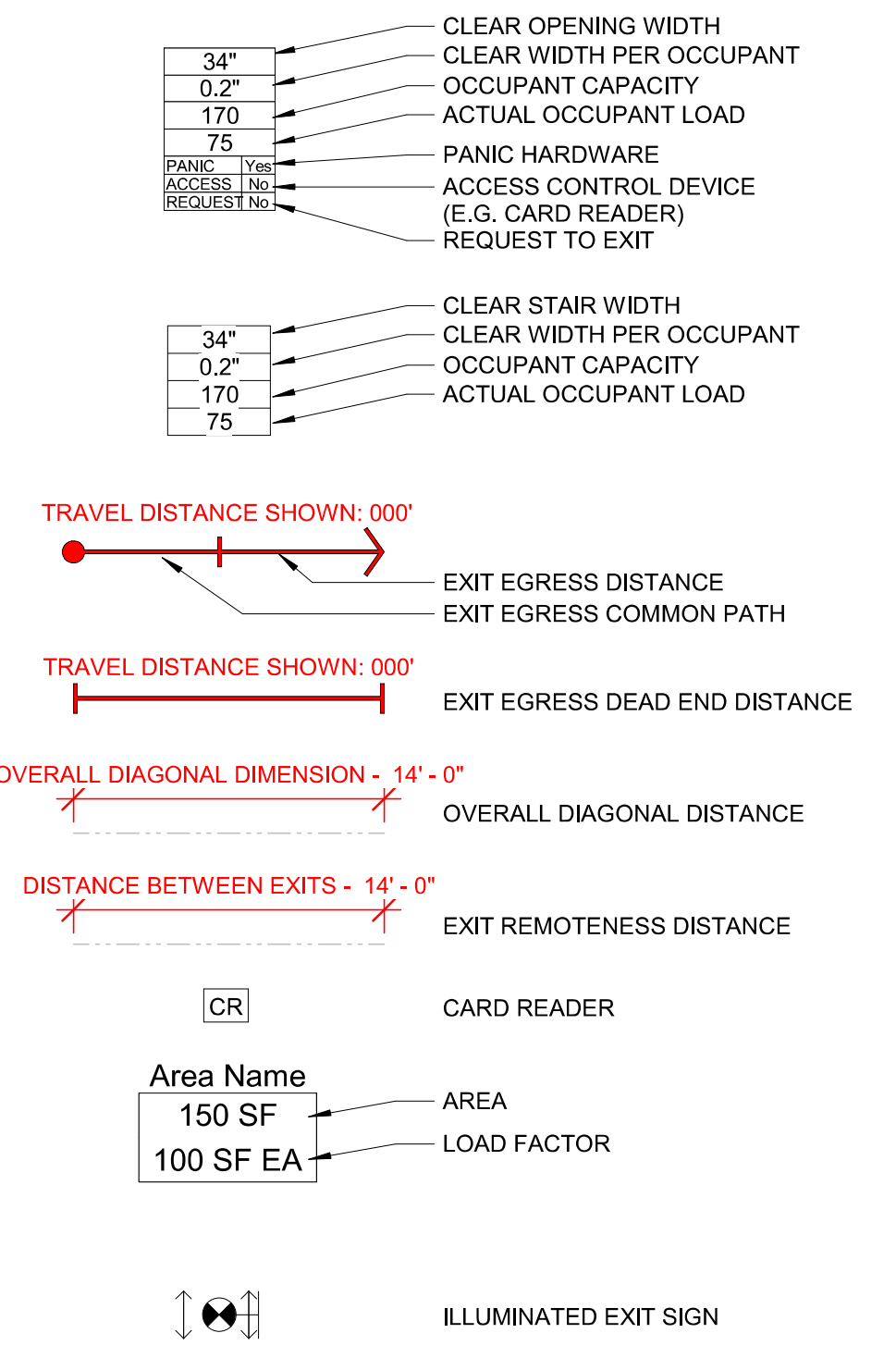
PER SECTION 1007.1.1, THE REQUIRED EGRESS ACCESS POINTS ARE BASED ON THE OVERALL DIAGONAL OF THE BUILDING. PER EXCEPTION 2, THE SEPARATION DISTANCE IS NOT LESS THAN ONE-THIRD THE LENGTH OF THE MAXIMUM OVERALL DIAGONAL DIMENSION OF THE AREA SERVED.

STAIR SHOWN IS NOT ENCLOSED PER EXCEPTION 3 IN SECTION 1023.2 NOTING THAT "A MAXIMUM OF 50 PERCENT OF EGRESS STAIRS SERVING ONE ADJACENT FLOOR ARE NOT REQUIRED TO BE ENCLOSED, PROVIDED AT LEAST TWO MEANS OF EGRESS ARE PROVIDED."

FIRE BARRIER		FIRE & SMOKE BARRIER	
1-HOUR		1-HOUR	
2-HOUR		2-HOUR	
3-HOUR		3-HOUR	
FIRE WALL		FIRE PARTITION	
2-HOUR		0.5-HOUR	
3-HOUR		1-HOUR	
4-HOUR			
SMOKE PARTITION		SMOKE BARRIER	
0-HOUR		1-HOUR	

RATED WALL TYPES

NOT TO SCALE



SYMBOLS - LIFE SAFETY

NOT TO SCALE

1 LIFE SAFETY PLAN - LEVEL 02
G114 1/8" = 1'-0"



ISSUE FOR
CONSTRUCTION DOCUMENTS

ISSUE DATE
06.28.2019

REVISIONS

NO.	REASON	DATE

PROJECT TEAM
PRINCIPAL IN CHARGE
JULIE MCLAURIN, AIA
PROJECT MANAGER
ERIC SCHOENAGEL, AIA
DESIGN TEAM
LITTLE
PROGRAM NAME

HARNETT COUNTY GOVERNMENT RESOURCE CENTER AND LIBRARY

PROJECT NO.
514-8066-00

SHEET TITLE
LIFE SAFETY PLAN - SECOND FLOOR

SHEET NUMBER
G114