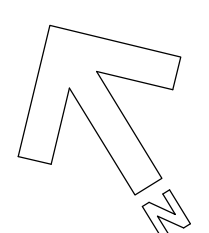
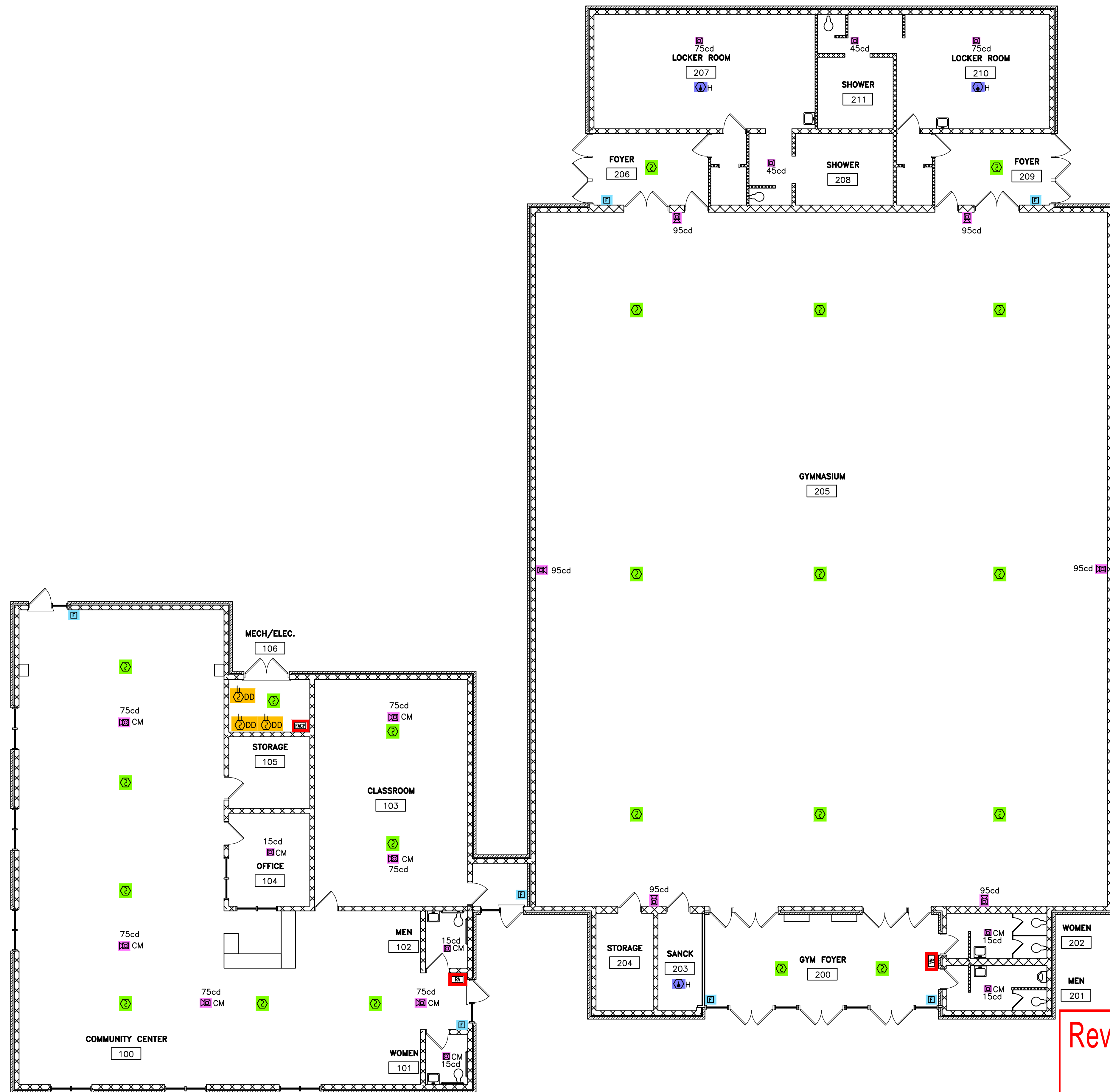
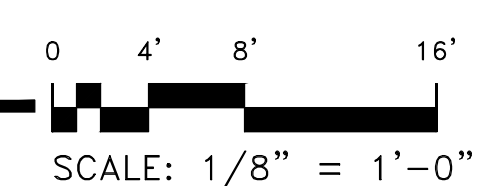


Plotted by: MarkW
Plotted Date: Feb 28, 2019 - 2:36pm



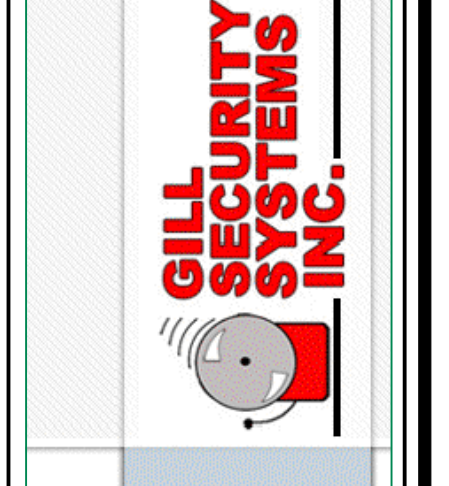
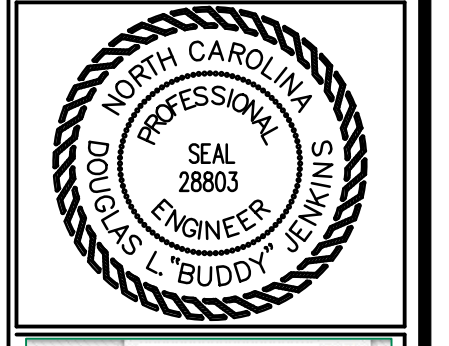
1
FA-1

FIRE ALARM PLAN
EXISTING FLOOR PLAN 15,115 GSF



Reviewed For Code Compliance By:
D. Banks Wallace
 Chief Deputy Fire Marshal
 04/10/2019 2:57:48 PM

JENKINS
 CONSULTING ENGINEERS, PA
 OFFICE IN EUREKA SPRINGS, NORTH CAROLINA
 1000 EUREKA SPRINGS ROAD, SUITE 200
 EUREKA SPRINGS, NC 28744
 CORPORATION NUMBER C-3070 Phone: 813-288-3300
 910-822-1724 FAX: 910-822-4646

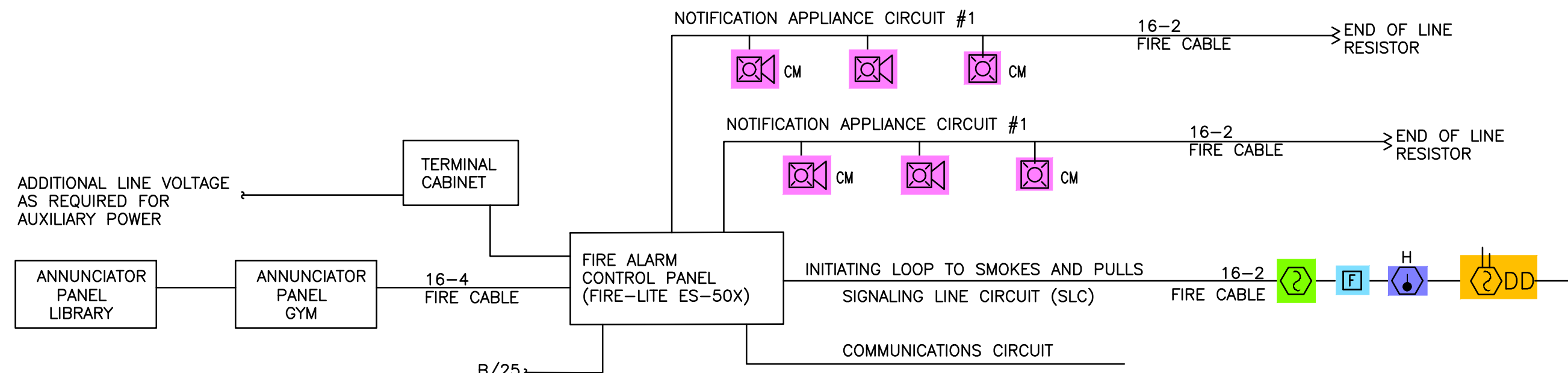


DESIGNED BY: B. JENKINS
 DRAWN BY: MAW
 CHECKED BY: B. JENKINS
 DATE: 26 FEB 2019

FINAL DRAWING FOR REVIEW PURPOSES ONLY
 PRELIMINARY FOR DESIGN DEVELOPMENT ONLY
 FINAL DRAWING FOR CONSTRUCTION

PROJECT: **BOONE TRAIL COMMUNITY CENTER**
 8500 OLD US HIGHWAY 421
 LILLINGTON, NC. 27546
 SHEET: **FLOOR PLAN - FIRE ALARM**

FA-1



NOTE: SEE SUBMITAL PACKAGE FOR DEVICE LITERATURE, BATTERY CALCULATIONS AND VOLTAGE DROP CALCULATIONS

GENERAL NOTES:

1. CONTRACTOR SHALL PROVIDE AND INSTALL NEW FIRE ALARM SYSTEM IN BUILDING AS REQUIRED BY NFPA 101, LIFE SAFETY CODE AND NFPA 72, THE FIRE ALARM CODE.
2. PROVIDE BACK BOXES FOR ALL WALL MOUNTED DEVICES.
3. ALL WIRING IS COPPER, WITH RED JACKET.
4. DEVICES SHALL BE RED IN COLOR.
5. VERIFY LOCATION OF ANNUNCIATOR PANEL WITH FIRE MARSHAL.

SYMBOL	DESCRIPTION
	FIRE ALARM CONTROL PANEL (FIRE-LITE ES-50X) W/ ANNUNCIATOR
	REMOTE ANNUNCIATOR (1 REQUIRED) (FIRE-LITE ANN-80)
	FIRE ALARM PULL STATION (HONEYWELL BG-12LX)
	CEILING MOUNT STROBE UNIT (SYSTEM SENSOR SRL) (cd) CANDELA RATING
	HORN/STROBE UNIT (SYSTEM SENSOR P2RL) (cd) CANDELA RATING
	CEILING MOUNT HORN/STROBE UNIT (SYSTEM SENSOR P2RL) (cd) CANDELA RATING
	SMOKE DETECTOR (SD 365)
	DUCT DETECTOR (D 355 PL OR EQUAL)
	HEAT DETECTOR (FIRE-LITE H365(A))
	DUPLEX-120V, 20AMP, DEDICATED PANEL A CIRCUIT 27 (OR DIRECT WIRED TO BREAKER)
	END OF LINE RESISTOR (EOL)

NOTES	
ALL FIRE ALARM EQUIPMENT TO MEET NFPA 72	
INSTALL NEW FACP & REQUIRED COMPONENTS TO COMPLETE THE INSTALLATION	
THE FIRE ALARM SYSTEM SHOWN HERE DEPICTS A CLASS "B" SYSTEM	
NEW FACP WILL BE A HONEYWELL FIRE-LITE ES-50X ADDRESSABLE CONTROL	
PROVIDE ADDITIONAL ZONE MODULES AS REQ'D FOR THE ADDITIONAL DEVICES	

BUILDING SUMMARY AND SCOPE OF WORK:

THE BUILDING CONSTRUCTION TYPE IS TYPE III-B ACCORDING TO 2018 NORTH CAROLINA BUILD CODE

BUILDING AREA 15,115 GROSS SQUARE FEET

BUILDING IS NOT PROTECTED BY FIRE SPRINKLERS OR A CURRENT FIRE ALARM SYSTEM

BUILDING USE IS AN EXISTING ASSEMBLY (A-3), (COMMUNITY CENTER)

THIS DRAWING INCLUDES A BUILDING FLOOR PLAN THAT WAS PREPARED BY JENKINS CONSULTING ENGINEERS. THE ACCURACY OF THE FLOOR PLAN HAS BEEN FIELD VERIFIED. THIS DRAWING IS PROVIDED TO SHOW THE LOCATION OF THE FIRE ALARM EQUIPMENT AND DEVICES.

THE FACILITY IS PROTECTED AND MONITORED BY AN EXISTING SECURITY SYSTEM.

THE SCOPE OF WORK INCLUDES REPLACEMENT OF EXISTING FIRE ALARM EQUIPMENT AND DEVICES TO COMMUNICATE WITH A NEW FIRE ALARM SYSTEM BY OTHERS. THE FIRE ALARM WILL BE MONITORED BY A CENTRAL STATION.

AN ADDRESSABLE FIRE ALARM CONTROL PANEL SIMILAR OR EQUAL TO FIRE-LITE ES-50X WILL BE INSTALLED.

A NEW REMOTE ANNUNCIATOR PANEL WILL BE INSTALLED WITH A NEW ADDRESSABLE REMOTE KEYPAD SIMILAR OR EQUAL TO FIRE-LITE ANN-80.

NEW FIRE PULL HANDLES WILL BE INSTALLED AT ALL EXITS AND WILL BE SIMILAR OR EQUAL TO FIRE-LITE BG-12LX.

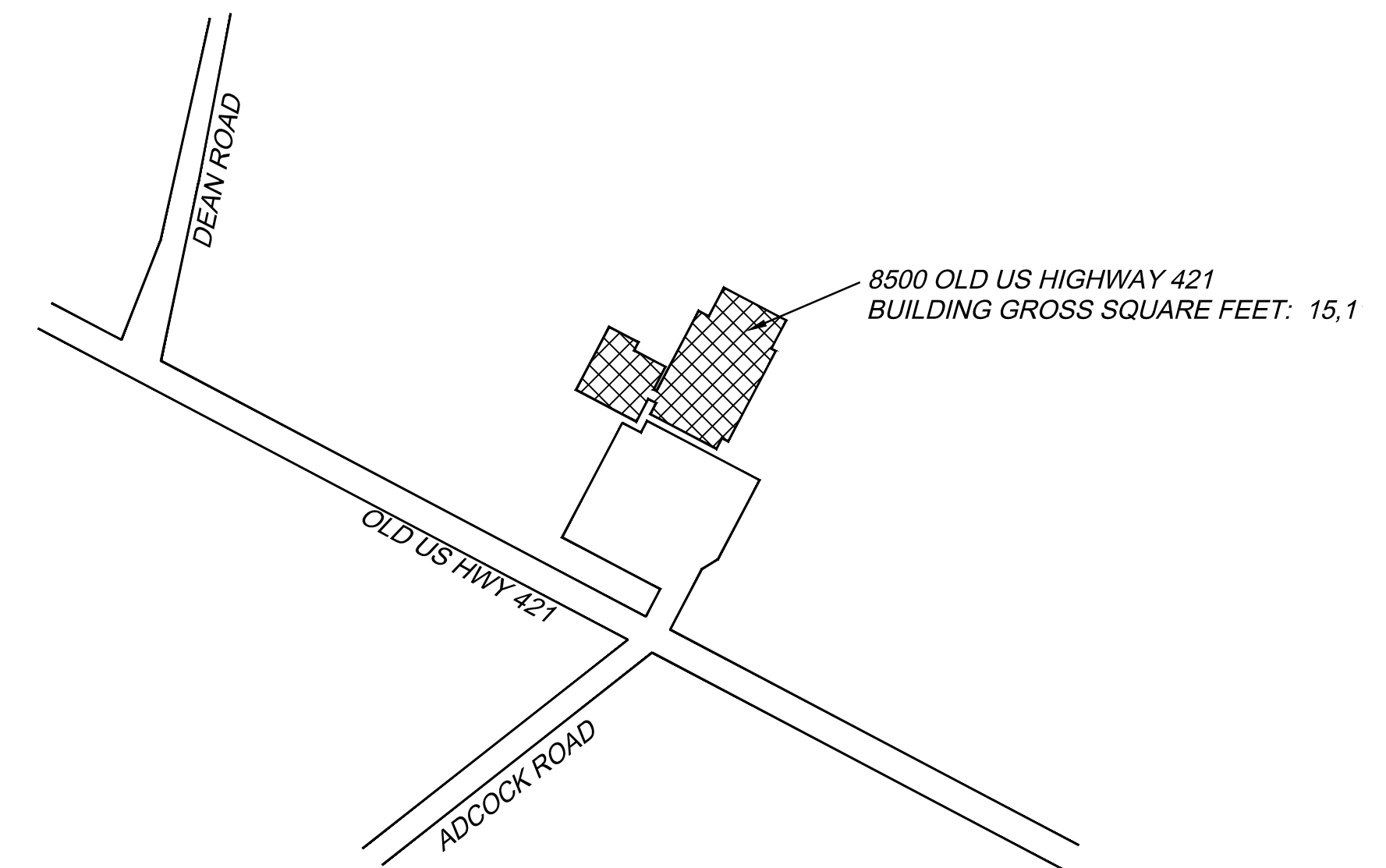
NEW SMOKE DETECTORS WILL BE INSTALLED IN REQUIRED AREAS AND WILL BE SIMILAR OR EQUAL TO FIRE-LITE SD-365.

NEW HORN STROBES/STROBE DEVICES WILL BE INSTALLED IN REQUIRED AREAS AND WILL BE SIMILAR OR EQUAL TO (HORN STROBE SYSTEM SENSOR P2RL, STROBE SYSTEM SENSOR SRL).

A NEW HEAT DETECTOR WILL BE INSTALLED IN THE KITCHEN AREA AND WILL BE SIMILAR OR EQUAL TO FIRE-LITE H365(A) SERIES.

FIRE ALARM CONTRACTOR WILL TEST AND INSPECT NEW SYSTEM WITH LOCAL AUTHORITIES.

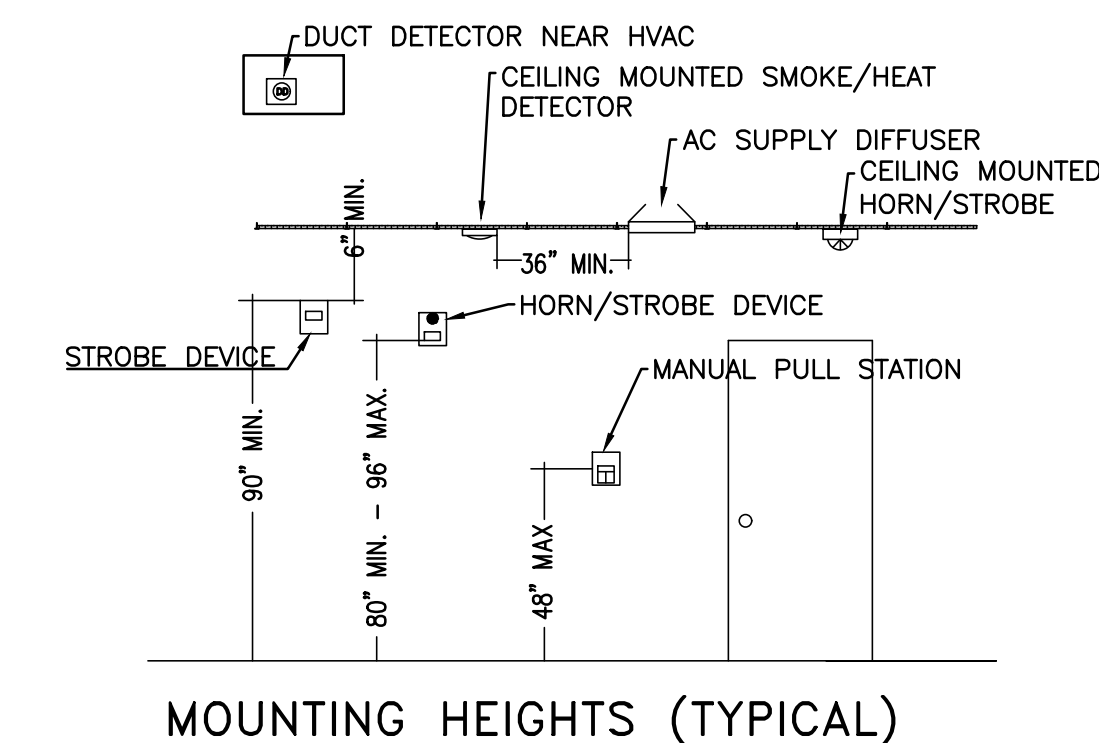
FIRE ALARM CONTRACTOR WILL ALSO PROVIDE TRAINING TO STAFF ON USE OF NEW FIRE ALARM SYSTEM.



1
FA-2
EXISTING SITE PLAN
N.T.S.

FIRE ALARM SYSTEM MATRIX	BUILDING SYSTEM OUTPUTS								CENTRAL STATION			
	ACTIVATE COMMON ALARM SIGNAL INDICATOR	ACTIVATE AUDIBLE ALARM SIGNAL	ACTIVATE COMMON SUPERVISORY SIGNAL INDICATOR	ACTIVATE AUDIBLE SUPERVISORY SIGNAL	ACTIVATE COMMON TROUBLE SIGNAL INDICATOR	ACTIVATE AUDIBLE TROUBLE SIGNAL	DISPLAY GENERAL EVACUATION	DISPLAY CHANGE OF STATUS ON FACP	TRANSMIT FIRE ALARM SIGNAL TO CENTRAL STATION	TRANSMIT SUPERVISORY SIGNAL TO CENTRAL STATION	TRANSMIT TROUBLE SIGNAL TO CENTRAL STATION	DISPLAY CHANGE OF STATUS TO CENTRAL STATION
BUILDING SYSTEM INPUTS												
MANUAL PULL STATION	X	X			X	X	X	X	X	X	X	X
BUILDING SMOKE DETECTOR	X	X			X	X	X	X	X	X	X	X
AC POWER FAILURE			X	X	X	X	X	X	X	X	X	X
SYSTEM LOW BATTERY			X	X	X	X	X	X	X	X	X	X
OPEN CIRCUIT			X	X	X	X	X	X	X	X	X	X
GROUND FAULT			X	X	X	X	X	X	X	X	X	X
NOTIFICATION APPLIANCE CIRCUIT SHORT			X	X	X	X	X	X	X	X	X	X

- PROGRAM AS SUPERVISORY UNLESS OTHERWISE REQUIRED BY LOCAL AHJ TO BE A GENERAL ALARM.



JENKINS CONSULTING ENGINEERS, PA
 OFFICE IN: EUREKA SPRINGS, NORTH CAROLINA
 1000 EUREKA SPRINGS ROAD, SUITE 200
 EUREKA SPRINGS, NC 28744
 CORPORATION NUMBER C-3070 | REG. NO. 28803
 910.822.1724 | FAX 910.822.4646



DESIGNED BY: B. JENKINS
 DRAWN BY: MAW
 CHECKED BY: B. JENKINS
 DATE: 26 FEB 2019

FINAL DRAWING FOR REVIEW PURPOSES ONLY
 PRELIMINARY FOR DESIGN DEVELOPMENT ONLY
 FINAL DRAWING FOR CONSTRUCTION

PROJECT: **BOONE TRAIL COMMUNITY CENTER**
 8500 OLD US HIGHWAY 421
 LILLINGTON, NC. 27546
 SHEET: **FLOOR PLAN - FIRE ALARM**

FA-2